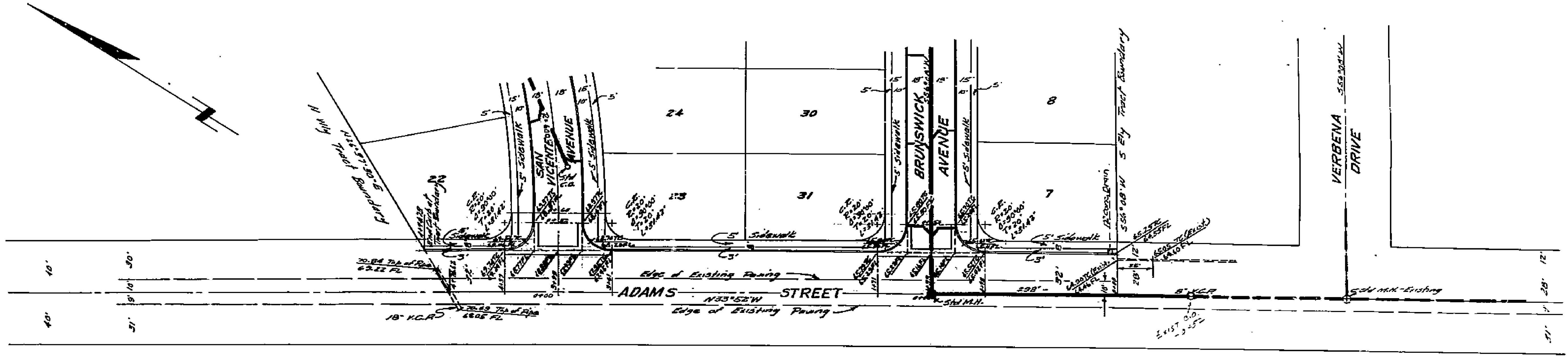
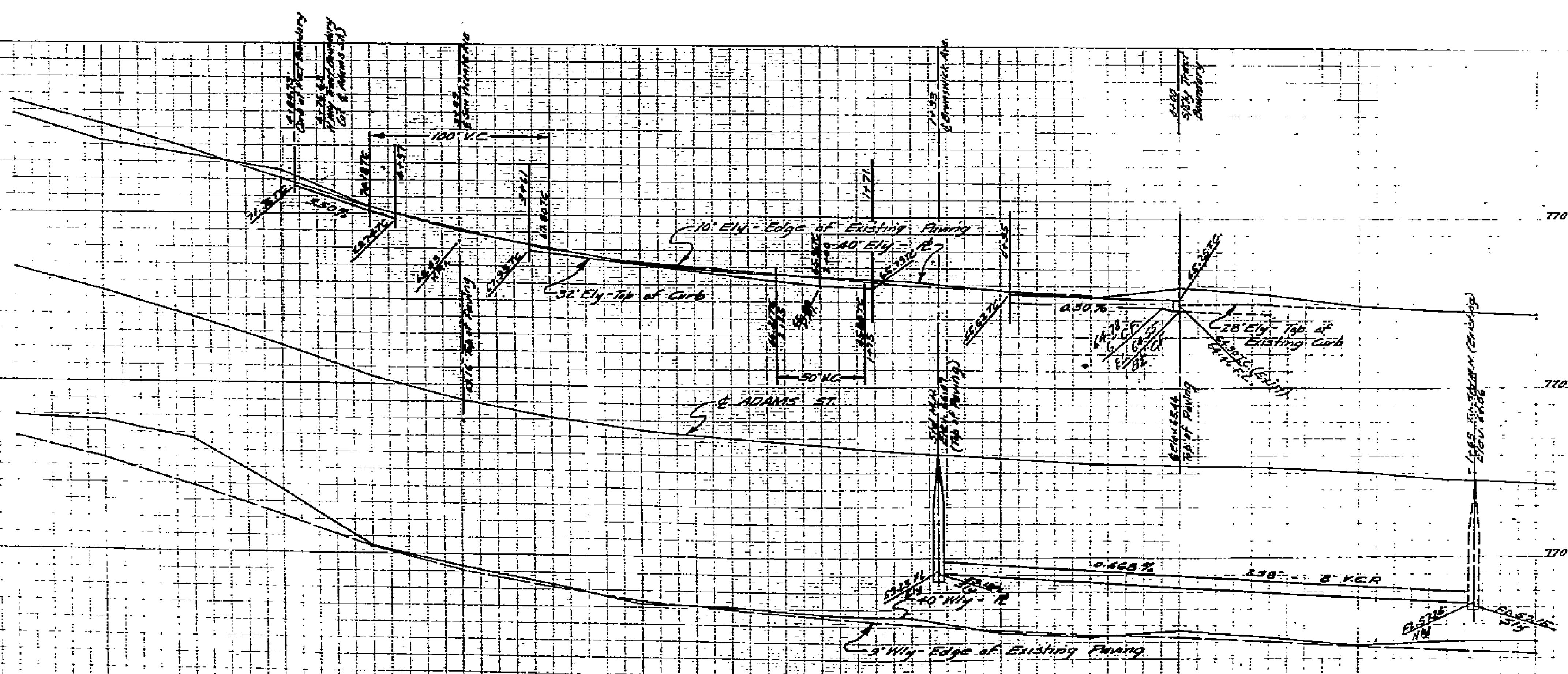


PROPERTY OF
CITY OF RIVERSIDE
CITY ENGINEERING DEPT.

PROPERTY OF
CITY OF RIVERSIDE
CITY ENGINEERING DEPT.



SHEET 2 OF 4 SHEETS



Bench Mark
N & L in NEly. Curb
Return Arlington Ave. and Arbor Dr.
Elev. 78.06

Approved *M. H. Davis*
City Engineer

PROPERTY OF
CITY OF RIVERSIDE
CITY ENGINEERING DEPT.

PLAN & PROFILE
ADAMS STREET
ST. PAUL PARK - UNIT NO. 2
October 1954 J.F. DAVIDSON, C.E.

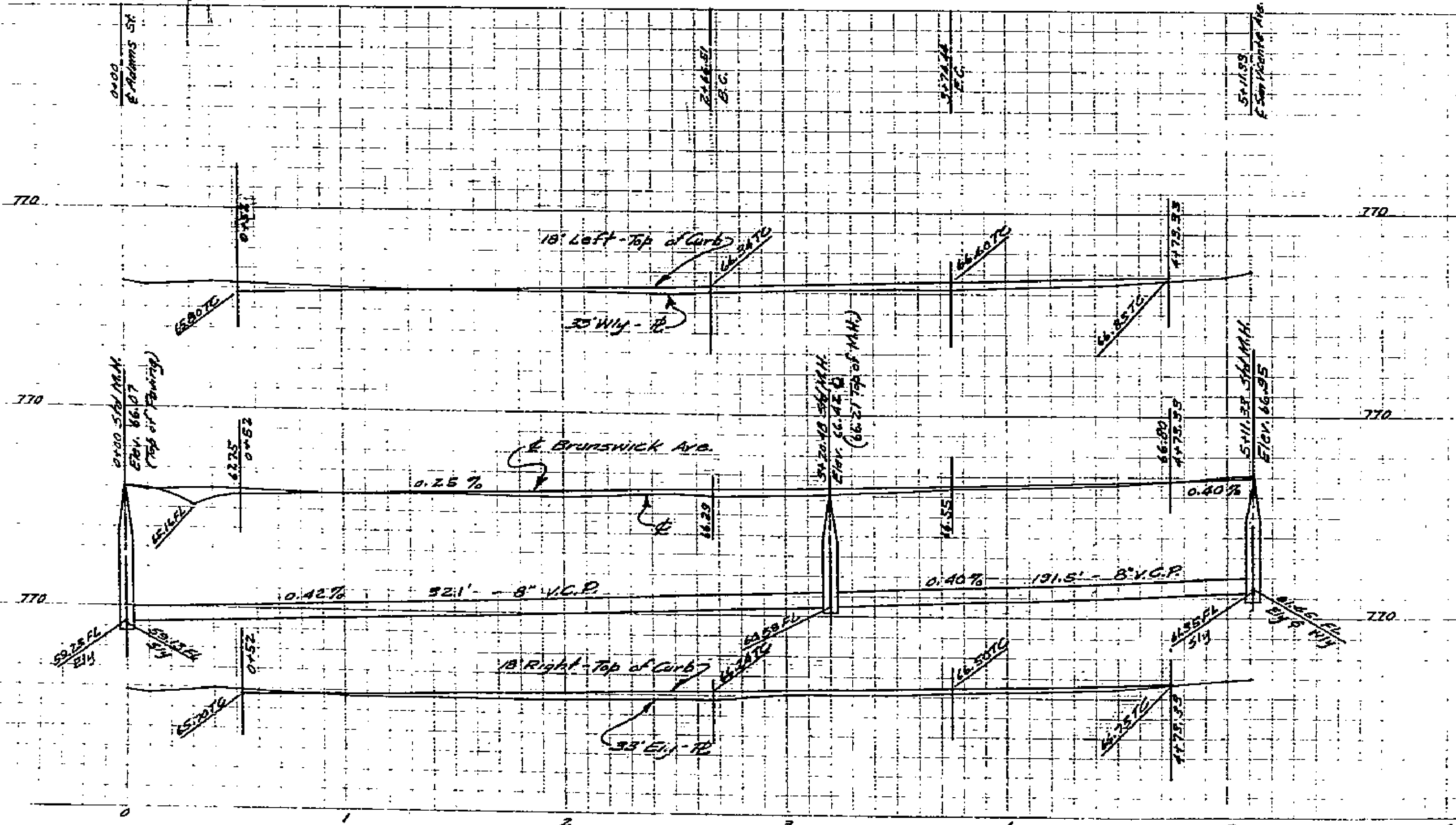
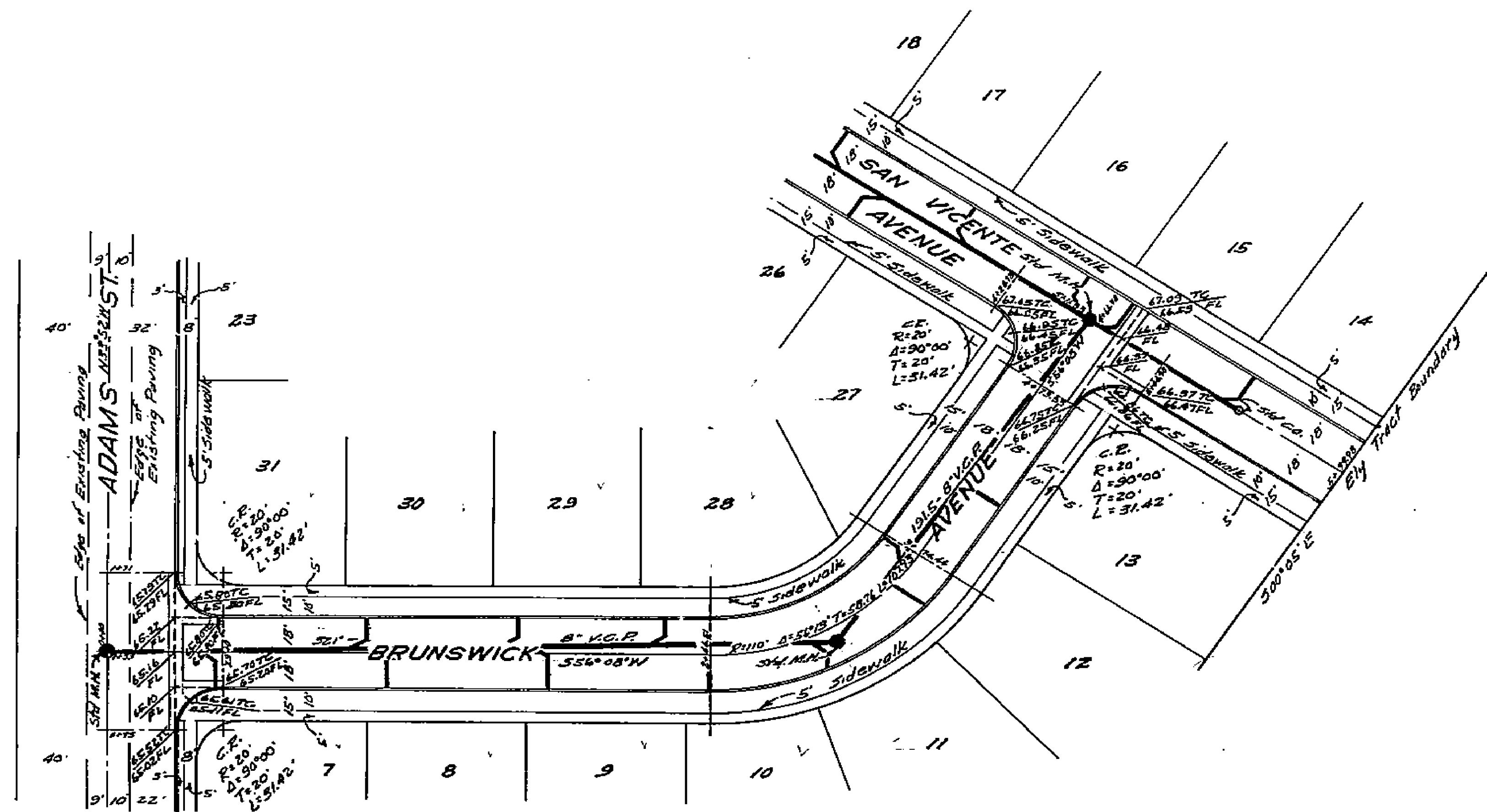
Scale: Hor. 1" = 40'
Vert. 1" = 4'

PROPERTY OF
CITY OF RIVERSIDE
CITY ENGINEERING DEPT.

MADE IN U.S.A.
CELEBRATION PAPER CO.
CLEVELAND, OHIO

MADE IN U.S.A.
CELEBRATION PAPER CO.
CLEVELAND, OHIO

1458A



SHEET 3 OF 4 SHEETS

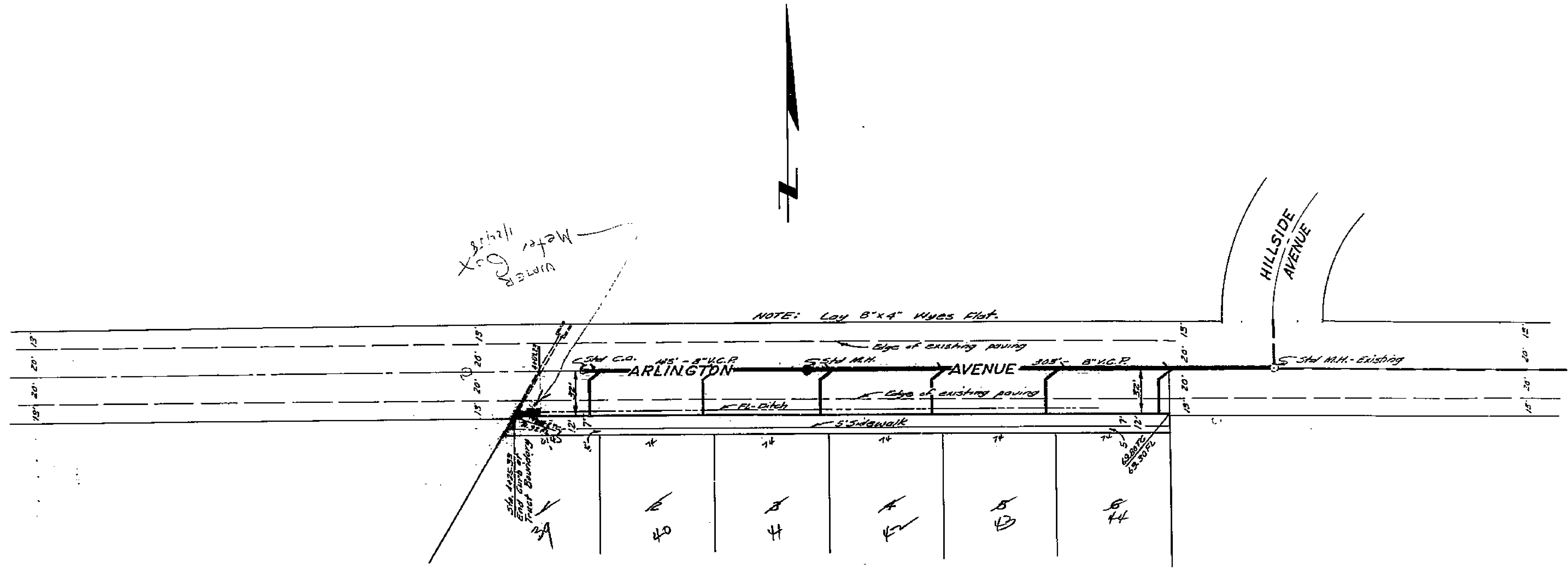
Branch Marks
N.E.L. in N.Ely Curb
Return Arlington Ave. Elev. 768.06
and Arbor Dr.
T.B.M. - 5 & T at existing
Curb Eridi. Sta.
0+00, 28' N & of Elev. 764.90
Adams St.

Approved M. H. Dwyer
City Engineer

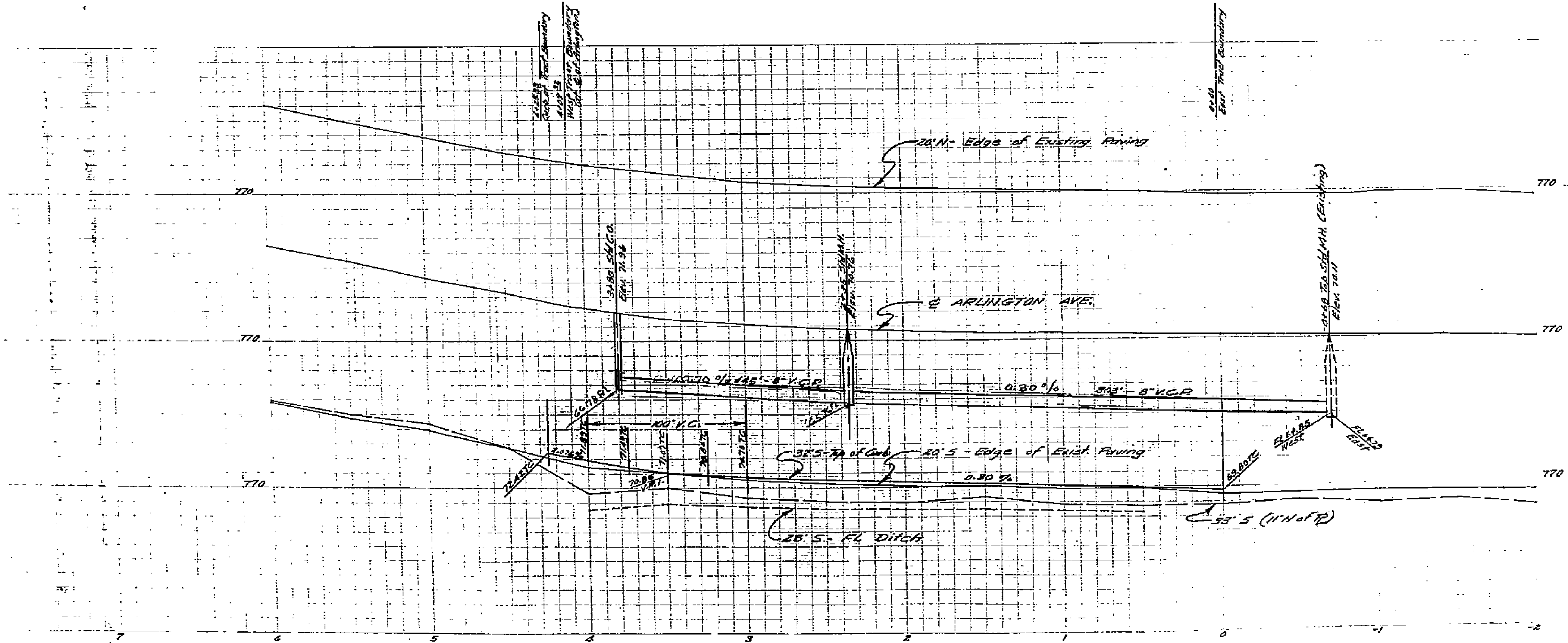
PLAN & PROFILE
BRUNSWICK AVENUE
ST PAUL PARK - UNIT NO 2
October 1954 J.F. DAVIDSON, C.E.

Scale: Hor. 1"=40'
Vert. 1"=4'

1458A



SHEET 1 OF 2 SHEETS



Bench Mark
N.B.L. in N.E. of Cor.
Return Arlington Ave. Elev 768.86
and Arbor Dr. Elev 768.11

Approved *M.H. Zavin*
City Engineer

PROPERTY OF
CITY OF RIVERSIDE
CITY ENGINEERING DEPT.

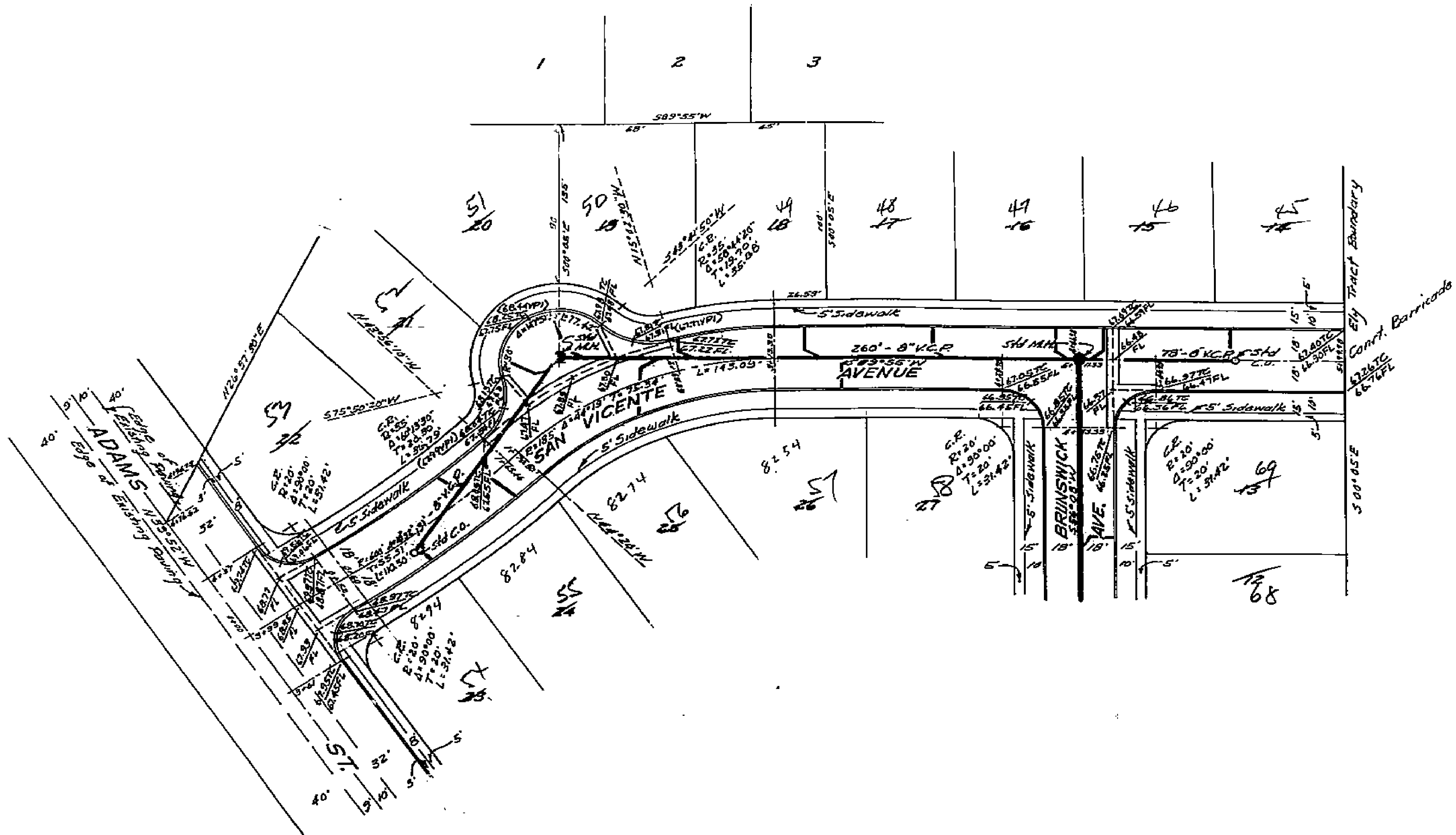
PLAN & PROFILE
ARLINGTON AVENUE
ST. PAUL PARK - UNIT NO. 2
October 1954 J.F. DAVIDSON, C.E.

Scale: Hor. 1" = 40'
Vert. 1" = 4'

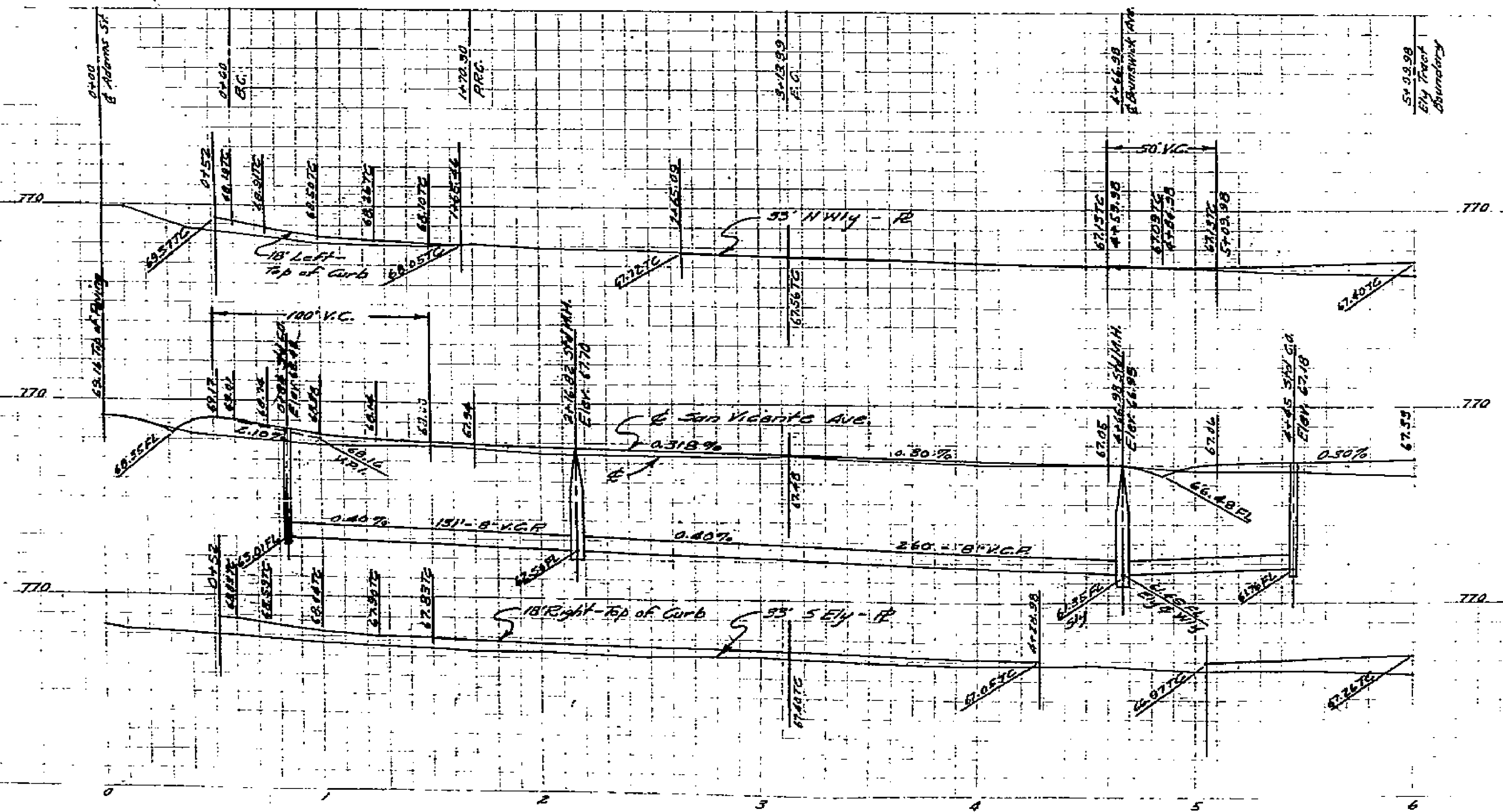
FILE 469-32436

1458H

PROPERTY OF
CITY OF RIVERSIDE
CITY ENGINEERING DEPT



SHEET 4 OF 4 SHEETS



Bench Marks
N & L in NEly Curb
Return Arlington Ave. Elev. 768.06
and Arbor Dr.
T.B.M. - S & T of existing
Curb End, Sta. 0+00, 23' N of Adams St. Elev. 764.90

Approved *M. H. Durine*
City Engineer

PLAN & PROFILE
SAN VICENTE AVENUE
ST. PAUL PARK - UNIT 10, 2
October 1958 J.F. DAVIDSON, C.E.

Scale: Hor. 1" = 40'
Vert. 1" = 4'

1458A

FB. 489-71 to 72

PROPERTY OF
CITY OF RIVERSIDE
CITY ENGINEERING DEPT

PROPERTY OF
CITY OF RIVERSIDE
CITY ENGINEERING