

WENTZ TRACT
PLAN & PROFILE
May, 1954
Scale: Horiz. 1" = 40'
Vert. 1" = 4'
Donald J. McKee, Lic. Surveyor

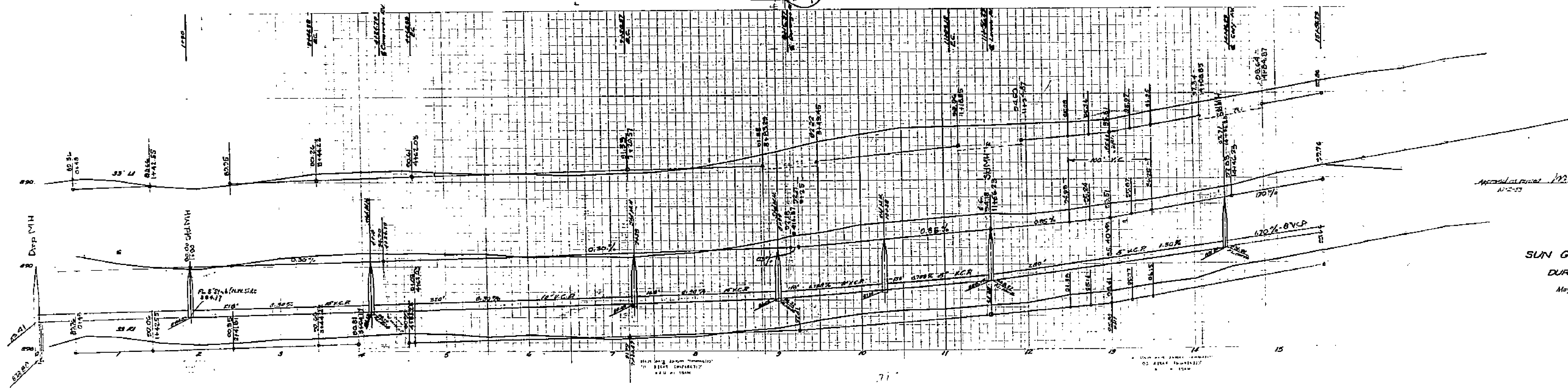
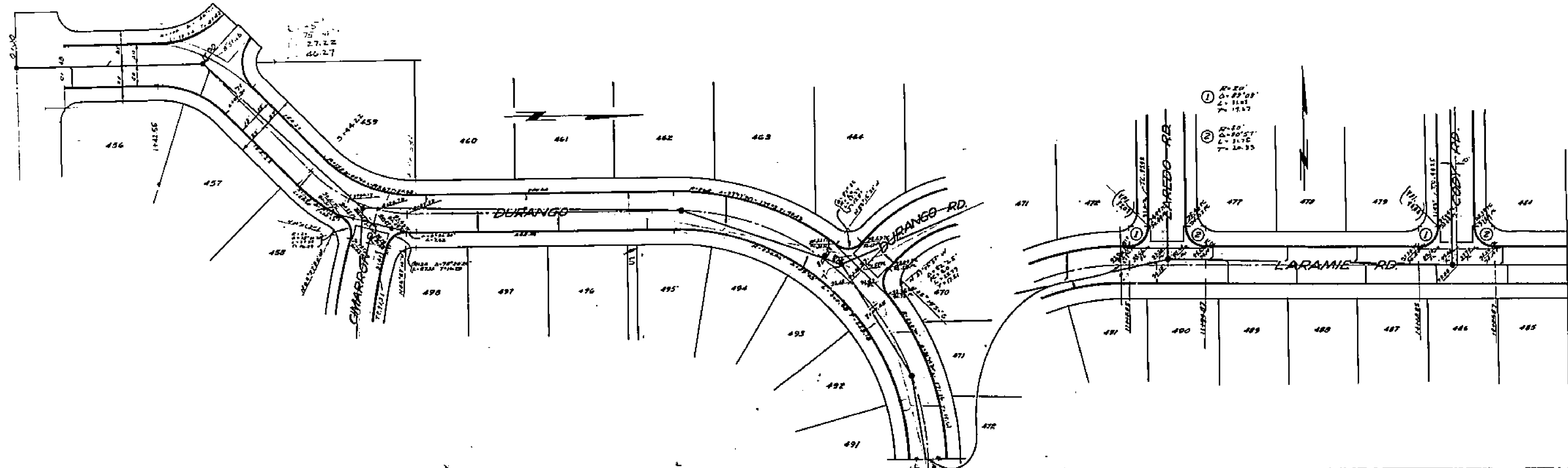
B.M.
RR Spk. in Pole No. 101407, S. side
101' West, 80' N. of U.P.R.R.
Elev. 773.81

Approved July 2, 1954
M.H. Irvine
M.H. Irvine, City Eng., Riverside, Calif.

1462
PROPERTY OF
CITY OF RIVERSIDE
CITY ENGINEERING DEPT.

CITY OF PIERCE
ENGINEERING

CITY OF PIERCE
ENGINEERING



CITY OF PIERCE
ENGINEERING

Approved *J.F. Davidson*
C.E. ENGINEER

Approved *J.F. Davidson*
10-2-53

CITY OF PIERCE
ENGINEERING

PLAN & PROFILE
 SUN GOLD TERRACE UNIT NO 7
 DURANGO RD. - LARAMIE RD.
 May 1953 J. F. Davidson C.E.
 Scale
 Hor. 1"=40'
 Vert. 1"=4'
 P.B. 157

1462