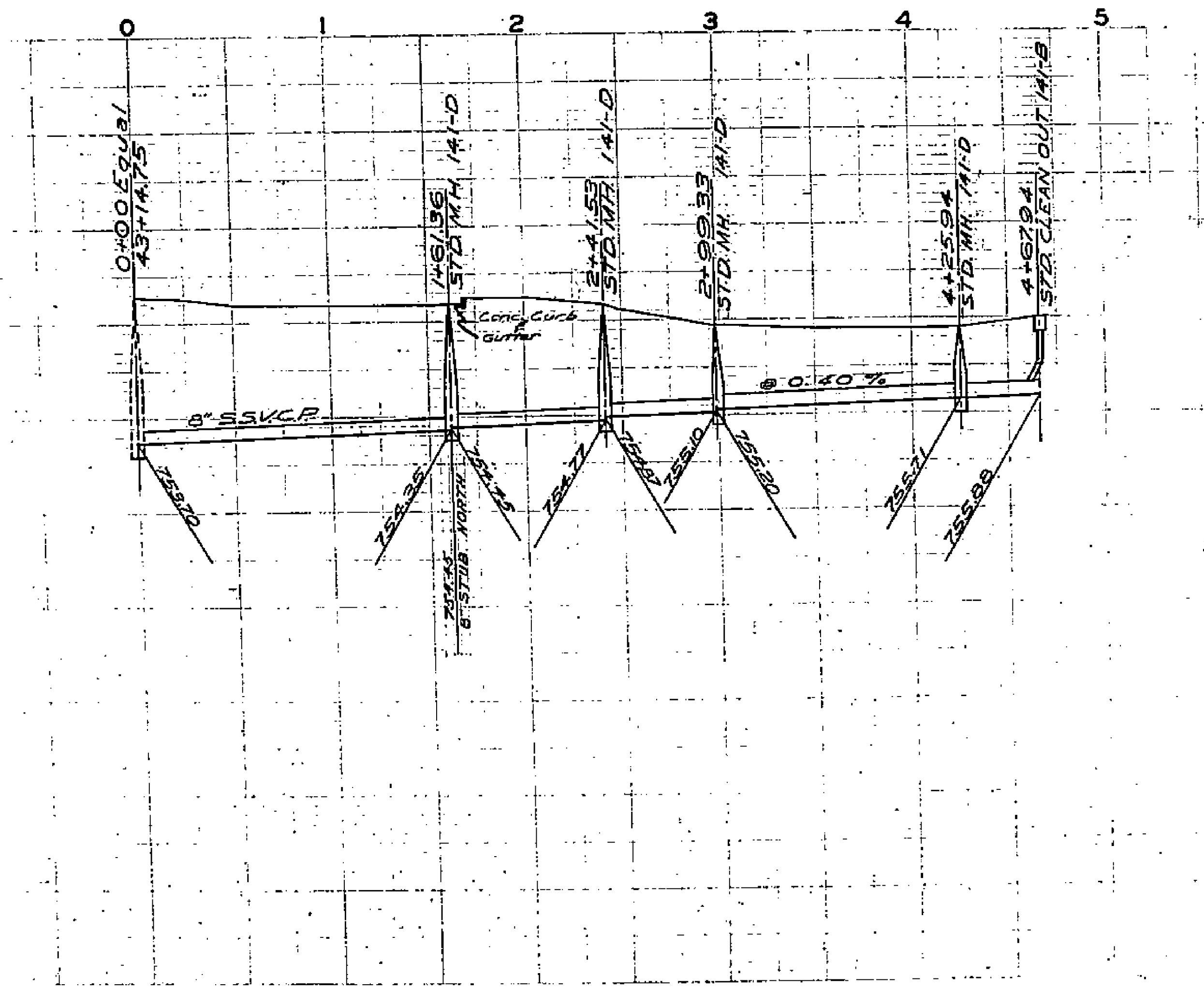
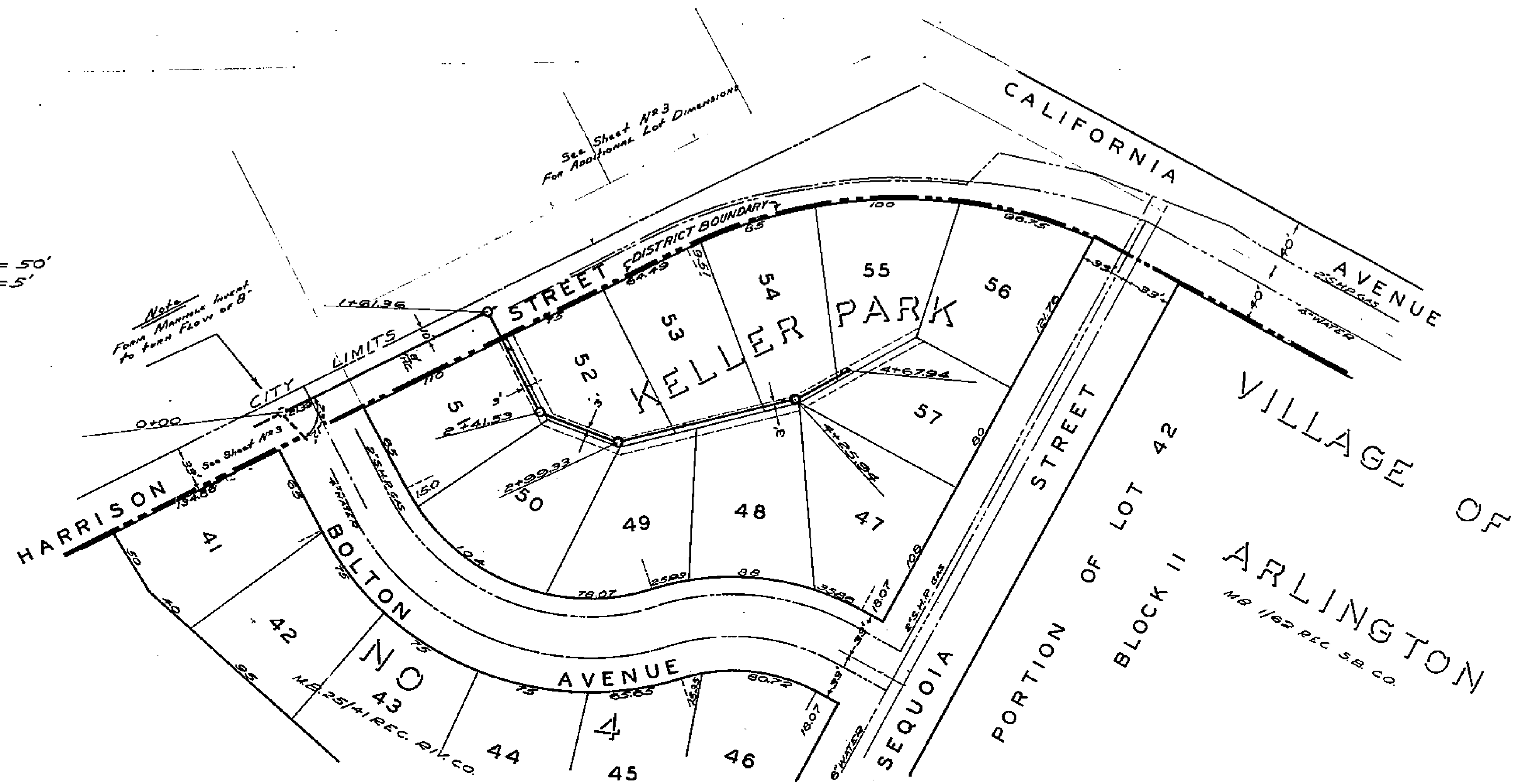


SCALES:

Horizontal 1" = 50'
Vertical 1" = 5'



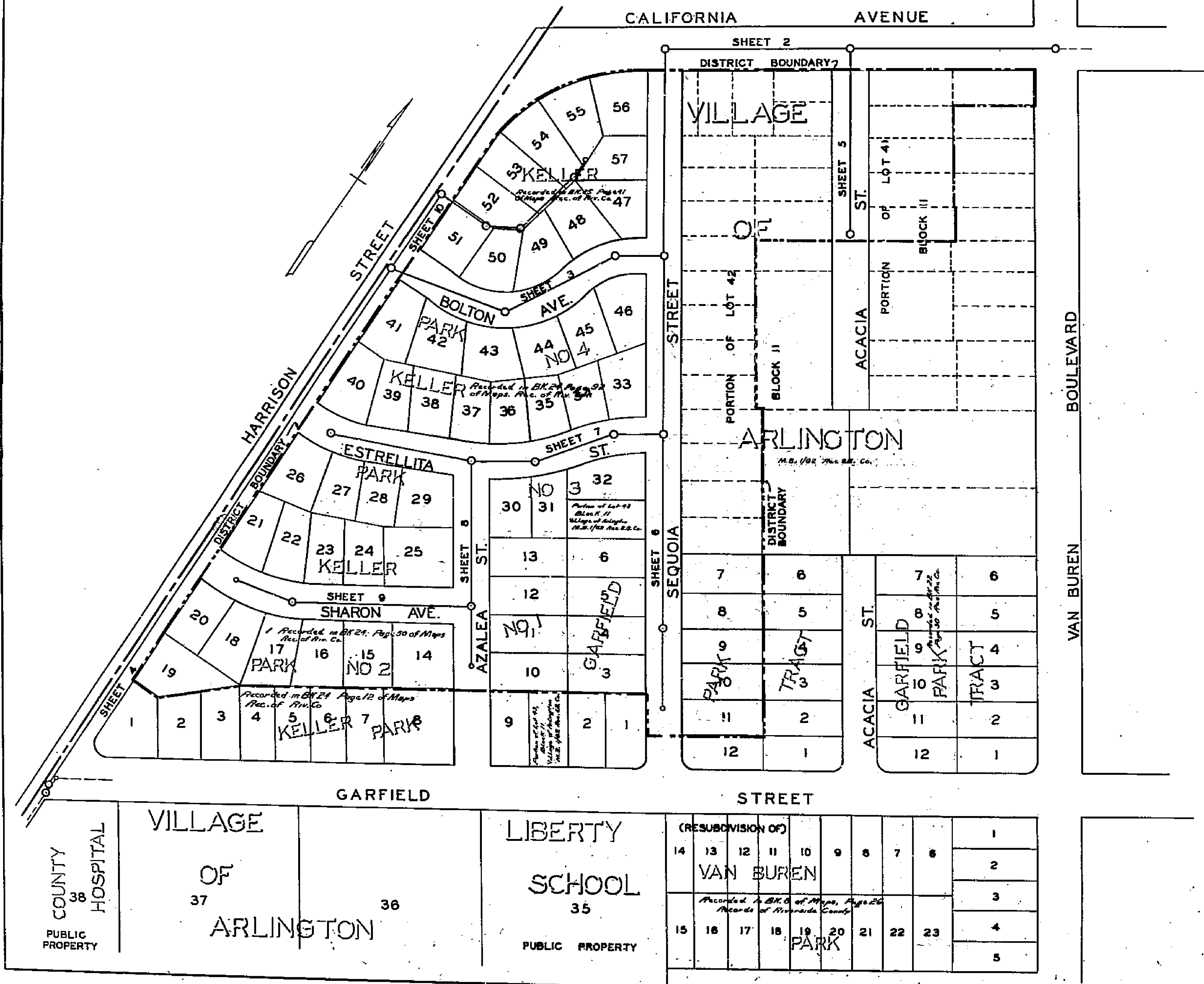
760
755
750
745
740

760
755
750
745
740

1465

INDEX SHEET TO
 PLAN NO. 1465
 FOR THE CONSTRUCTION OF SANITARY SEWERS
 IN THE
**KELLER PARK
 SANITARY SEWER DISTRICT**

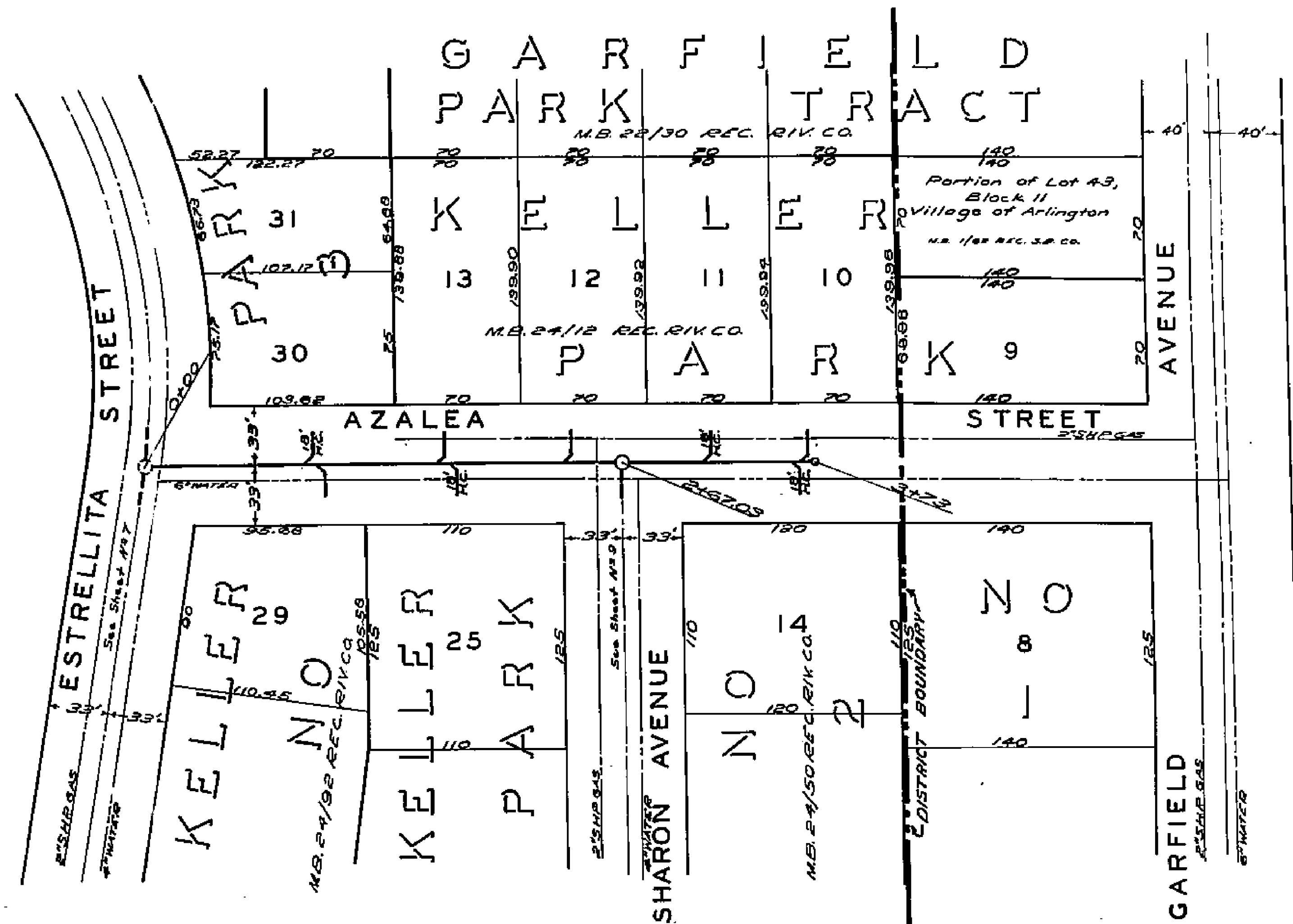
RIVERSIDE, CALIFORNIA
 SCALE 1 IN. = 100 FT.
 JULY 1954
 APPROVED: *M. H. Irvine*
 M.H. IRVINE-REG. C.E. NO. 3011



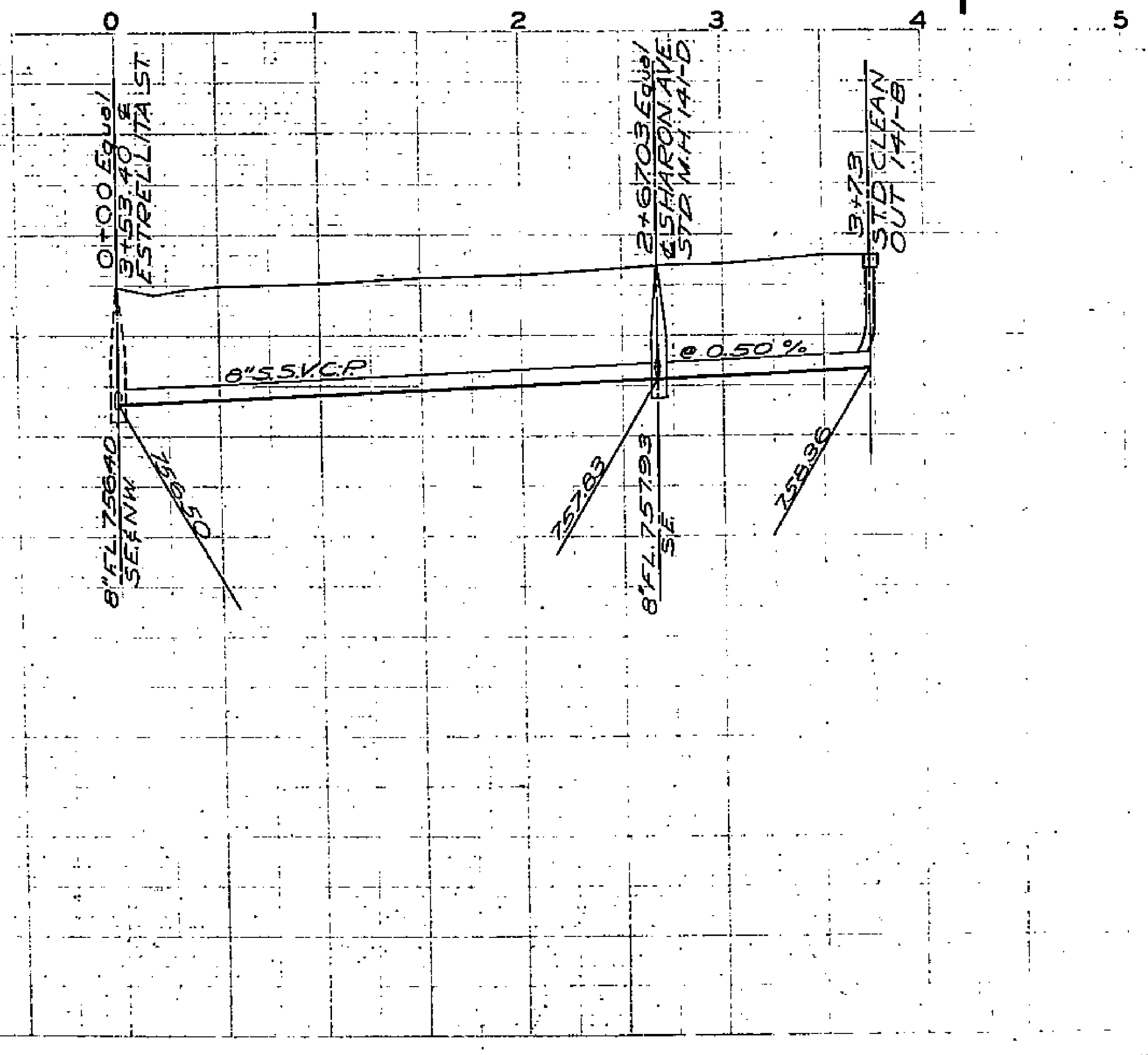
(RESUBDIVISION OF)													
14	13	12	11	10	9	8	7	6	5	4	3	2	1
VAN BUREN													
Recorded in B.C. of Maps, Page 26 Records of Riverside County													
15	16	17	18	19	20	21	22	23	24	25	26	27	28
PARK													

1465

SCALES: Horizontal 1"=50'
Vertical 1"=5'



765
760
755
750



765
760
755
750

1465





ASSESSMENT NO. 397
DIAGRAM

EXHIBITING KELLER PARK SANITARY SEWER DISTRICT

IN THE CITY OF RIVERSIDE ON WHICH WORK HAS BEEN DONE UNDER THE OFFICIAL CONTRACT OF THE SUPERINTENDENT OF STREETS OF SAID CITY WITH DATED NOV. 1, 1954
C.O. BRAND
 FOR THE CONSTRUCTION OF SANITARY SEWERS AND APPURTENANCES IN HARRISON STREET AND OTHER STREETS IN THE KELLER PARK SANITARY SEWER DISTRICT AS IS MORE PARTICULARLY DESCRIBED IN SAID CONTRACT TO WHICH REFERENCE IS HEREBY MADE FOR FURTHER PARTICULARS; SAID DIAGRAM ALSO SHOWS THE RELATIVE LOCATION OF EACH LOT PORTION OF LOT PIECE OR PARCEL OF LAND ASSESSED FOR THE WORK DONE NUMBERED IN CIRCLES TO CORRESPOND TO THE RED INK NUMBERS IN THE ASSESSMENT
 HEREIN FIGURES NEXT TO PROPERTY LINES SHOW LENGTH OF SAID LINES IN FEET. THE MARK (1) MEANS FEET. PROPERTY LINES THAT DIFFER FROM THE RECORDED SUBDIVISIONS ARE SHOWN BY BROKEN LINES. THE DISTRICT BENEFITED IS BOUNDED BY A HEAVY DASHED LINE
 PROPERTY COVERED BY THIS ASSESSMENT IS SHOWN ON THE FOLLOWING RECORDED MAPS:

KELLER PARK NO. 1 M.B. 24-12 REC. RIV. CO.
 " " " 24-50 " " "
 " " " 24-92 " " "
 " " " 25-41 " " "
 GARFIELD PARK TRACT " 22-30 " " "
 VILLAGE OF ARLINGTON " 1-82 " S.B. CO.

HEREIN THE LEGEND OF THE DIFFERENT KINDS OF WORK PERFORMED IS SHOWN AS FOLLOWS:

VITRIFIED PIPE SEWER AND MANHOLE 
 " HO. CON. LATERALS 
 " WYE BRANCHES 
 " SEWER AND CLEANOUT 

CITY ENGINEER OF THE CITY OF RIVERSIDE
 THE FOLLOWING IS A STATEMENT OF AMOUNTS OF DIFFERENT KINDS OF WORK DONE BY
C.O. BRAND UNDER
 CONTRACT DATED NOVEMBER 1, 1954 PURSUANT TO
 RESOLUTION OF INTENTION NO. 6238 ADOPTED BY THE
 CITY COUNCIL OF THE CITY OF RIVERSIDE ON THE
 10th DAY OF AUGUST 1954

176 LIN. FT. 18" E.S. VIT. CLAY PIPE SEWER
 522.5 " " 18" S.S. " " "
 2058.25 " " 15" S.S. " " "
 12.8 " " 10" S.S. " " "
 3038.44 " " 8" S.S. " " "
 22 STANDARD MANHOLES, 141-D
 1 " " " 141-E
 4 " " " CLEANOUTS 141-B
 4 18"x4" E.S. WYE BRANCHES
 8 18"x4" S.S. " " "
 31 15"x4" S.S. " " "
 62 8"x4" S.S. " " "
 1422.5 LIN. FT. 4" VIT. CLAY PIPE HOUSE CONNECTIONS

I HEREBY CERTIFY THAT THE ABOVE WORK WAS DONE IN ACCORDANCE WITH LINES AND GRADES FURNISHED BY ME AND THAT THE DIAGRAM OF THE ASSESSMENT DISTRICT FOR THE SAME IS CORRECT.

CITY ENGINEER
 OF THE CITY OF RIVERSIDE

AT SAID CITY OF RIVERSIDE THIS 15th DAY OF FEB. 1955

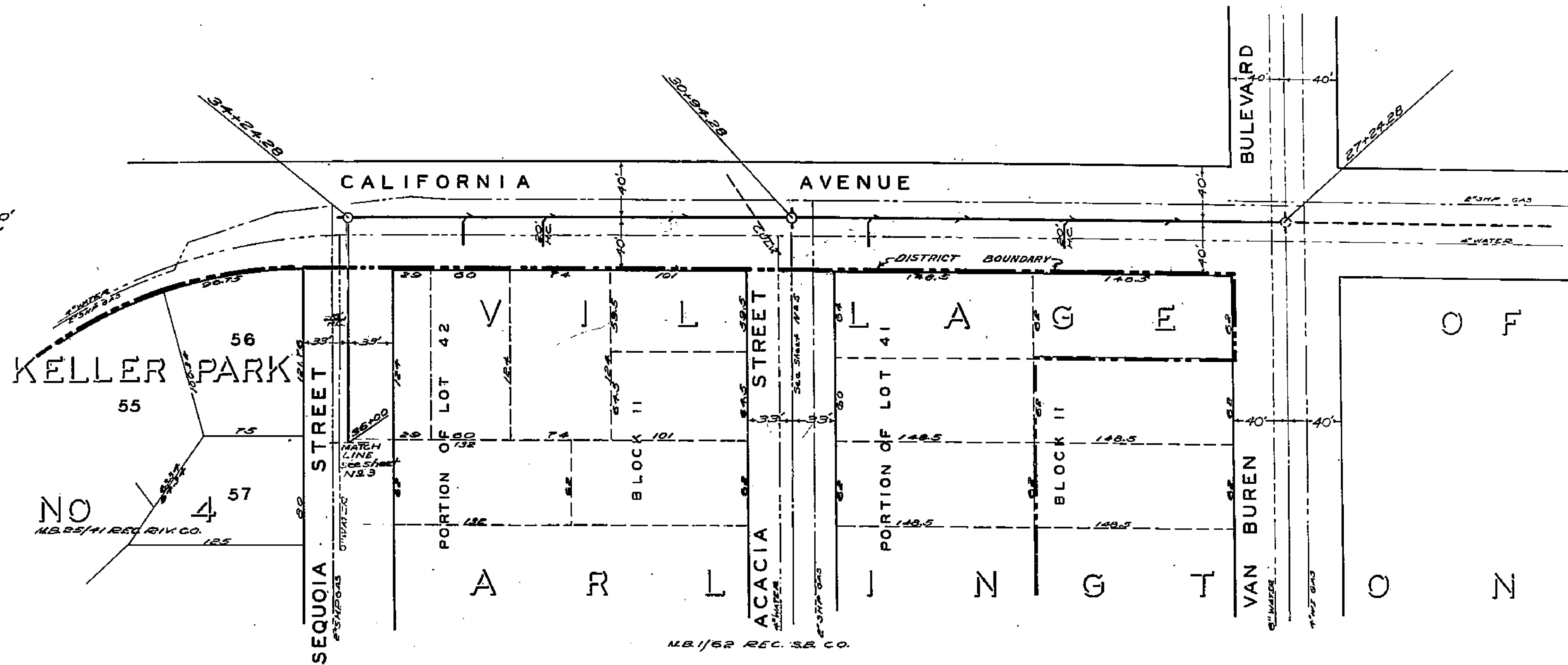
CITY ENGINEER
 OF THE CITY OF RIVERSIDE

RECORDED AT 11:40 O'CLOCK A.M.
 THIS 4th DAY OF MAY 1955

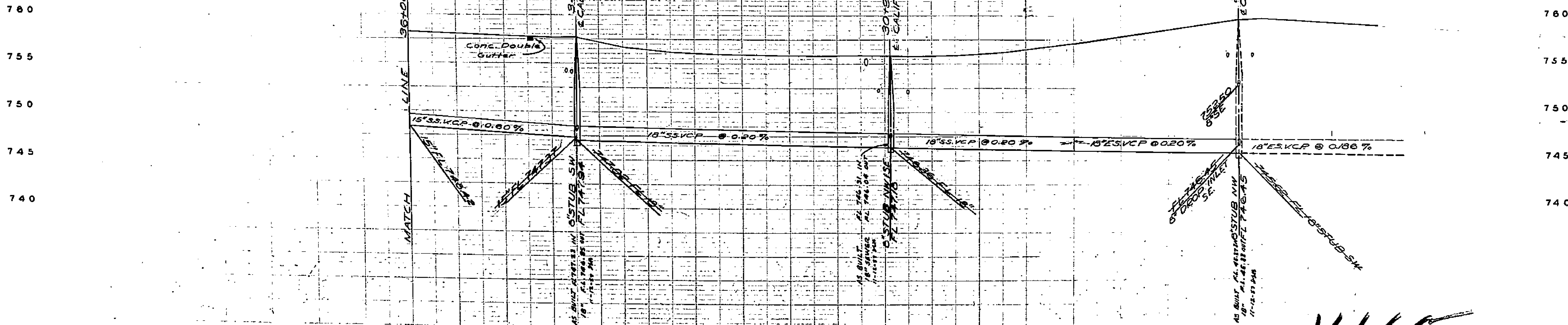
SUPERINTENDENT OF STREETS
 OF THE CITY OF RIVERSIDE

51

SCALES:
Horizontal 1"=50'
Vertical 1"=5'

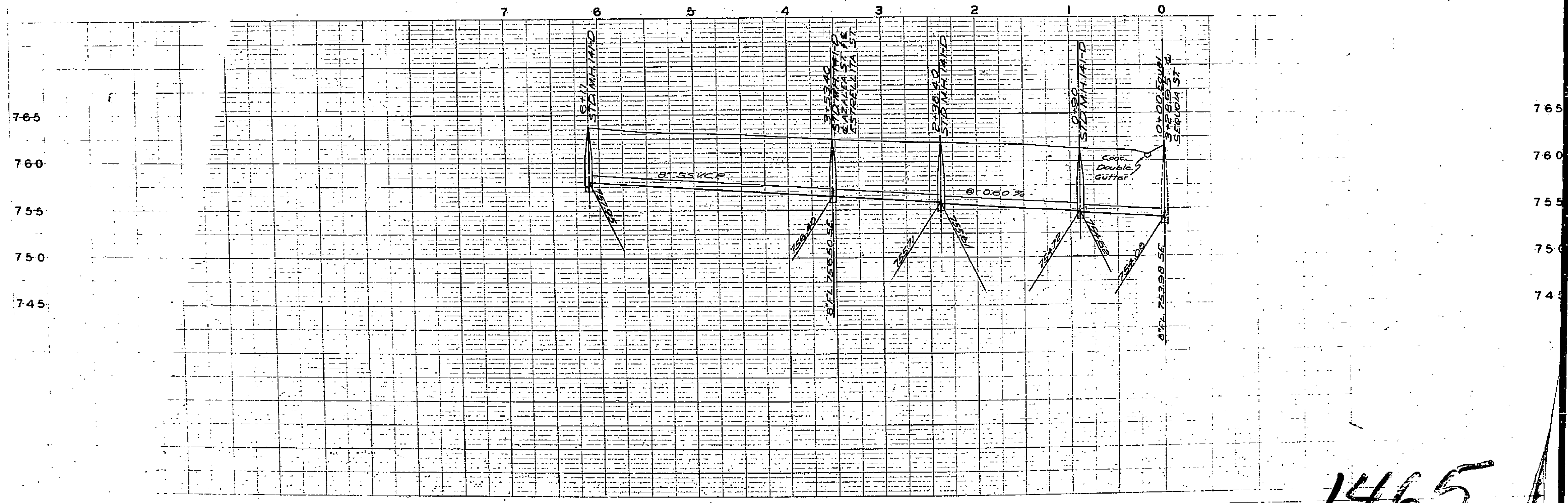
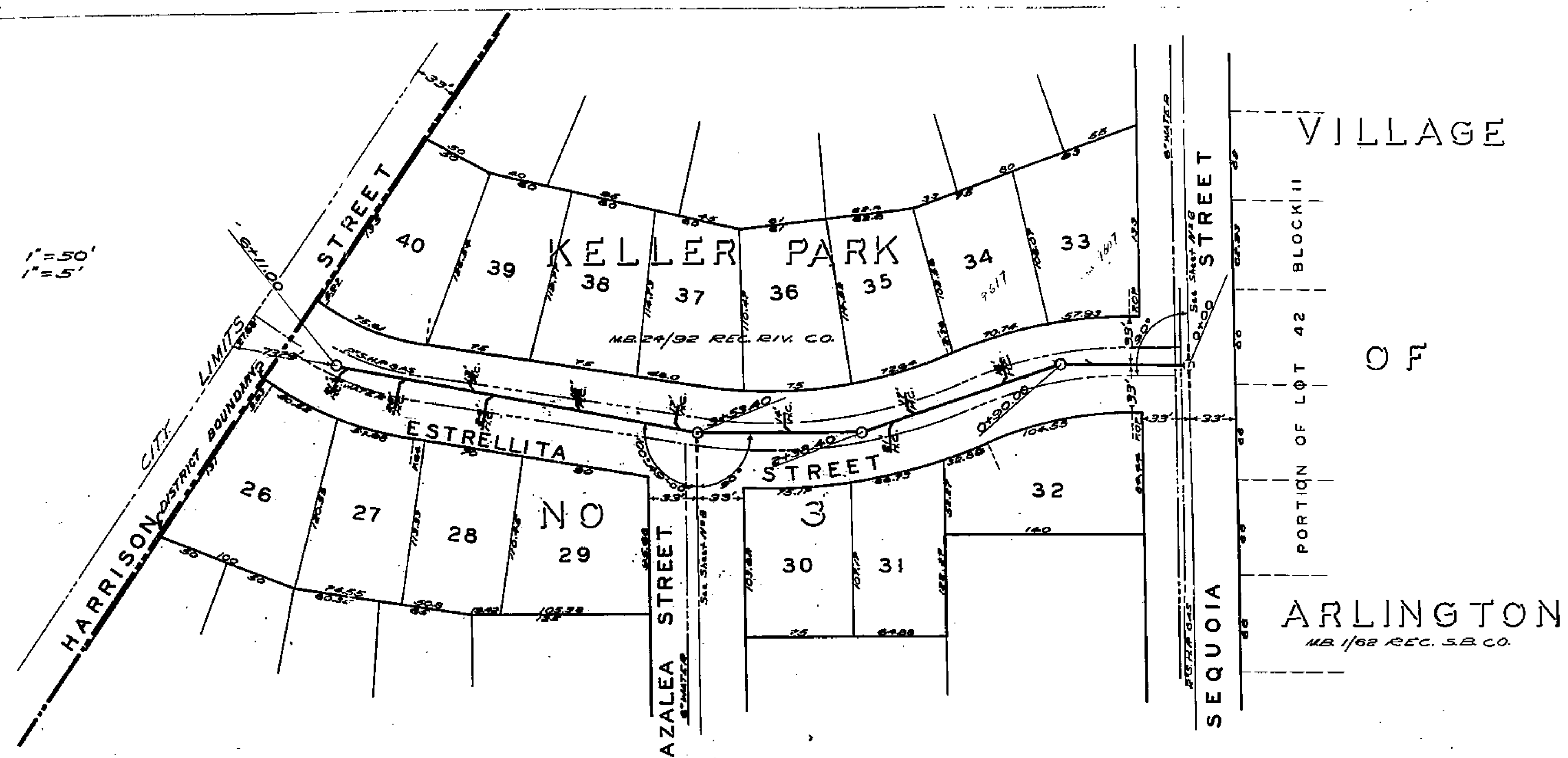
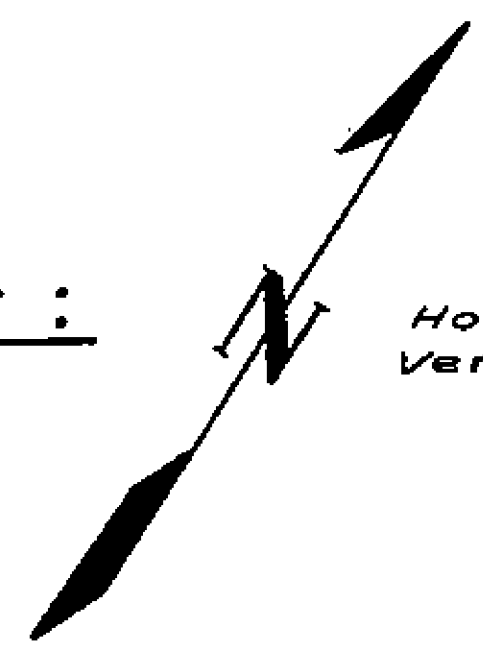


36 35 34 33 32 31 30 29 28 27 AS BUILT F.L. ELEVATIONS F.B. 599/67 11-12-57 R/A

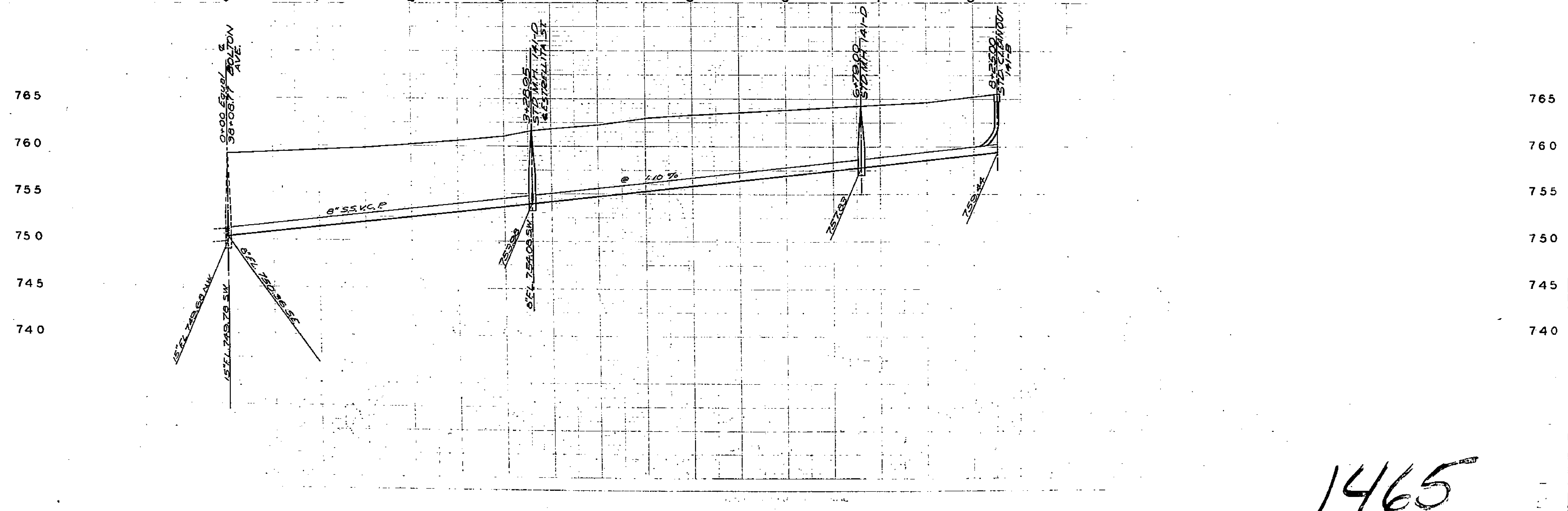
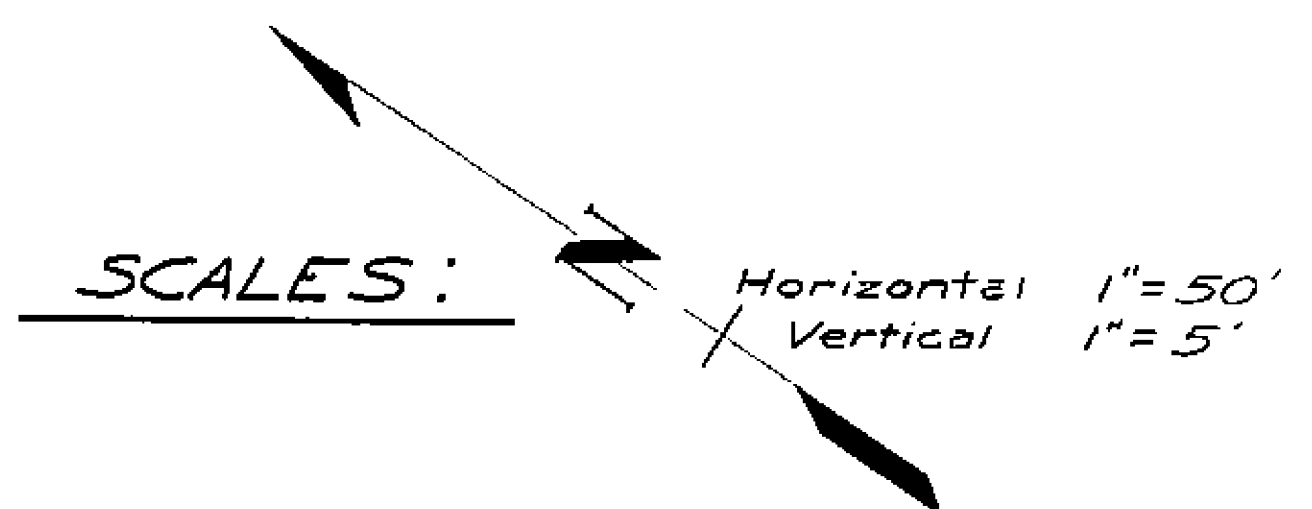
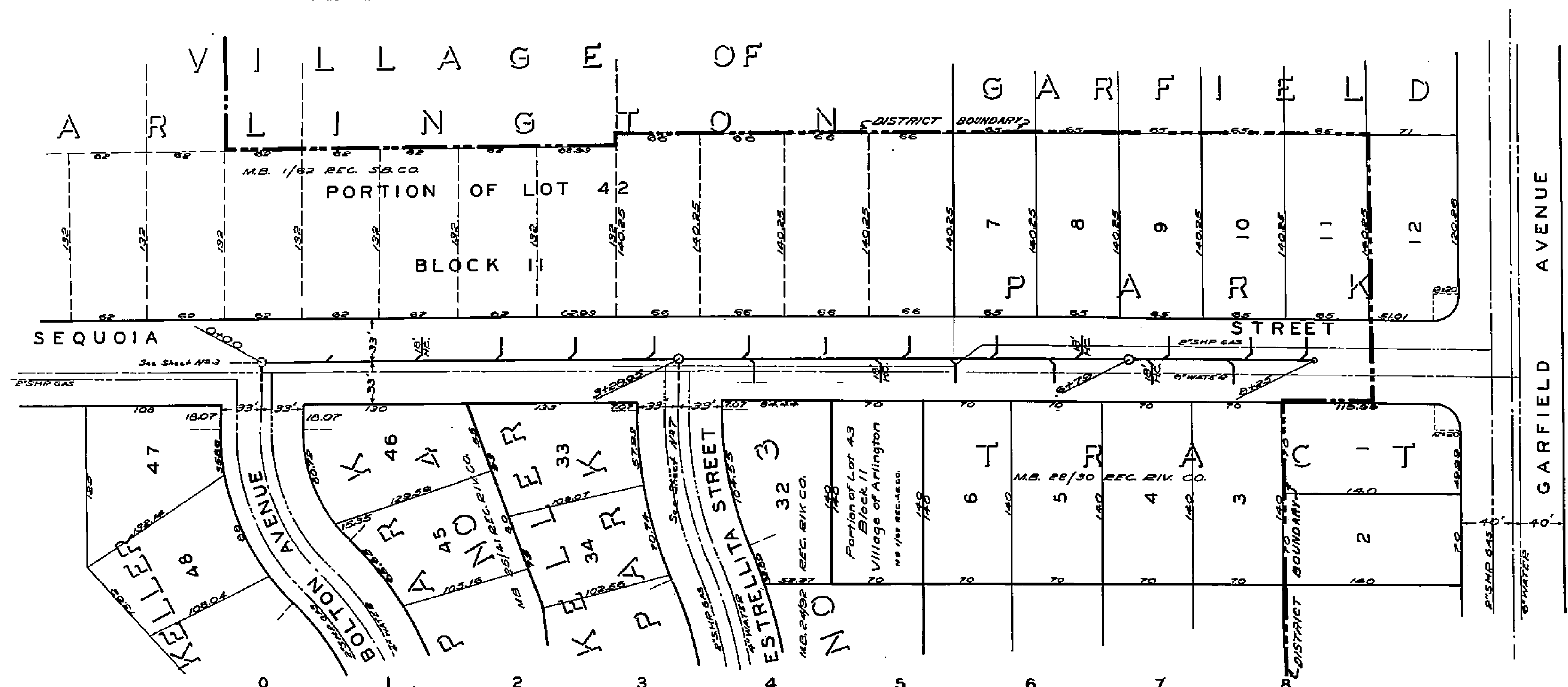


1465

SCALES :
Horizontal 1"=50'
Vertical 1"=5'

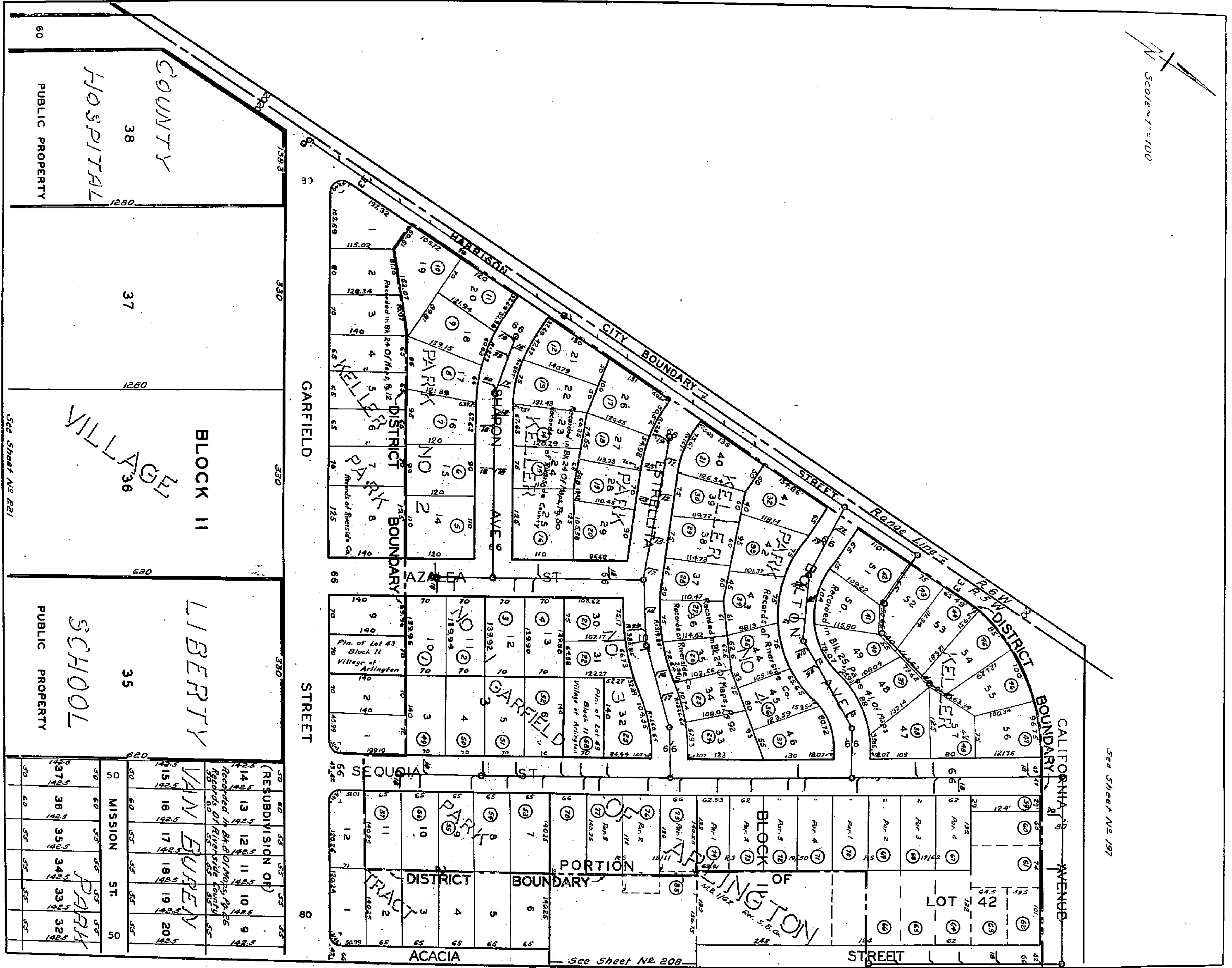
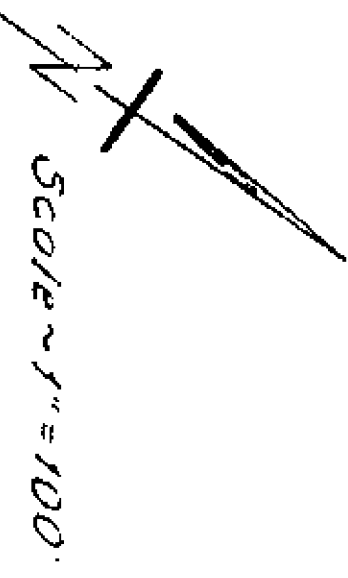


1465



1465

175



60
PUBLIC PROPERTY
COUNTY
HOSPITAL
38
1280

330
37
1280

BLOCK II
VILLAGE
36
620
See Sheet No 221

LIBERTY
SCHOOL
PUBLIC PROPERTY
35
620

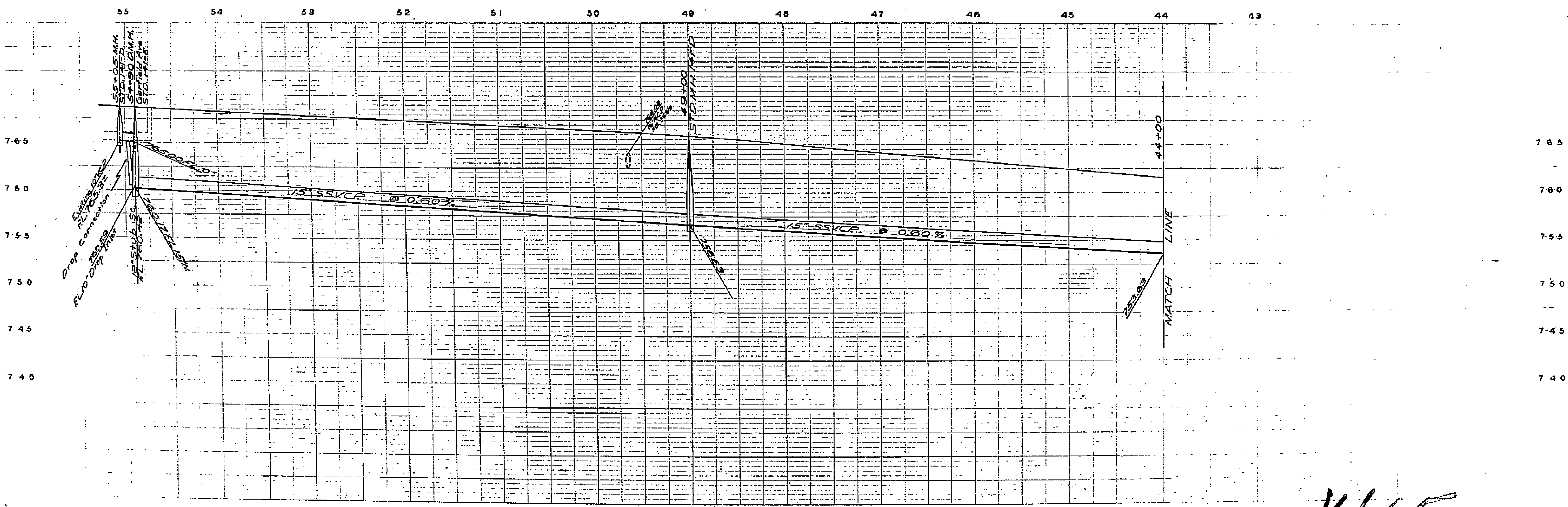
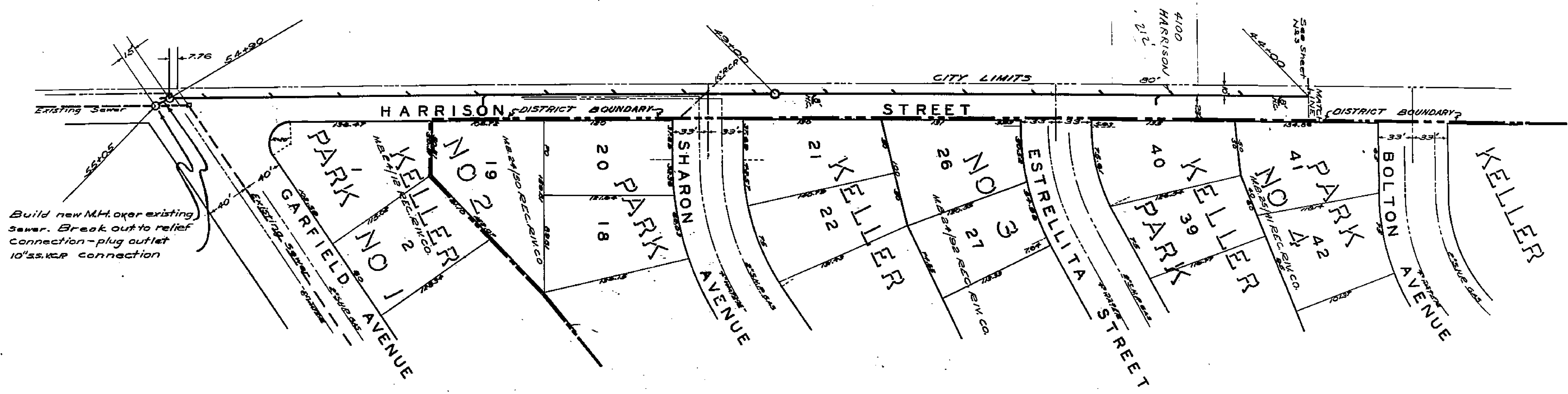
50	50	50	50	50	50
50	60	55	55	55	55
50	60	55	55	55	55
50	60	55	55	55	55
50	60	55	55	55	55

(RESUBDIVISION OF)
VAN BUREN
PARK
Recorded in Bk. of Maps, p. 55
Records of Riverside County

See Sheet No 197

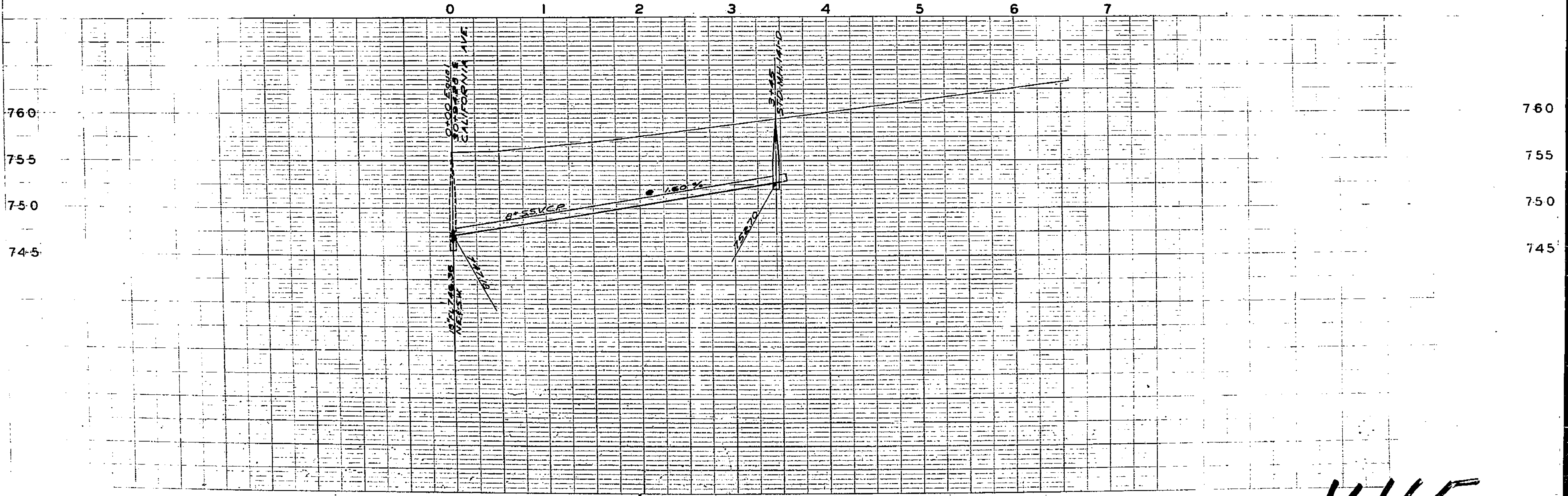
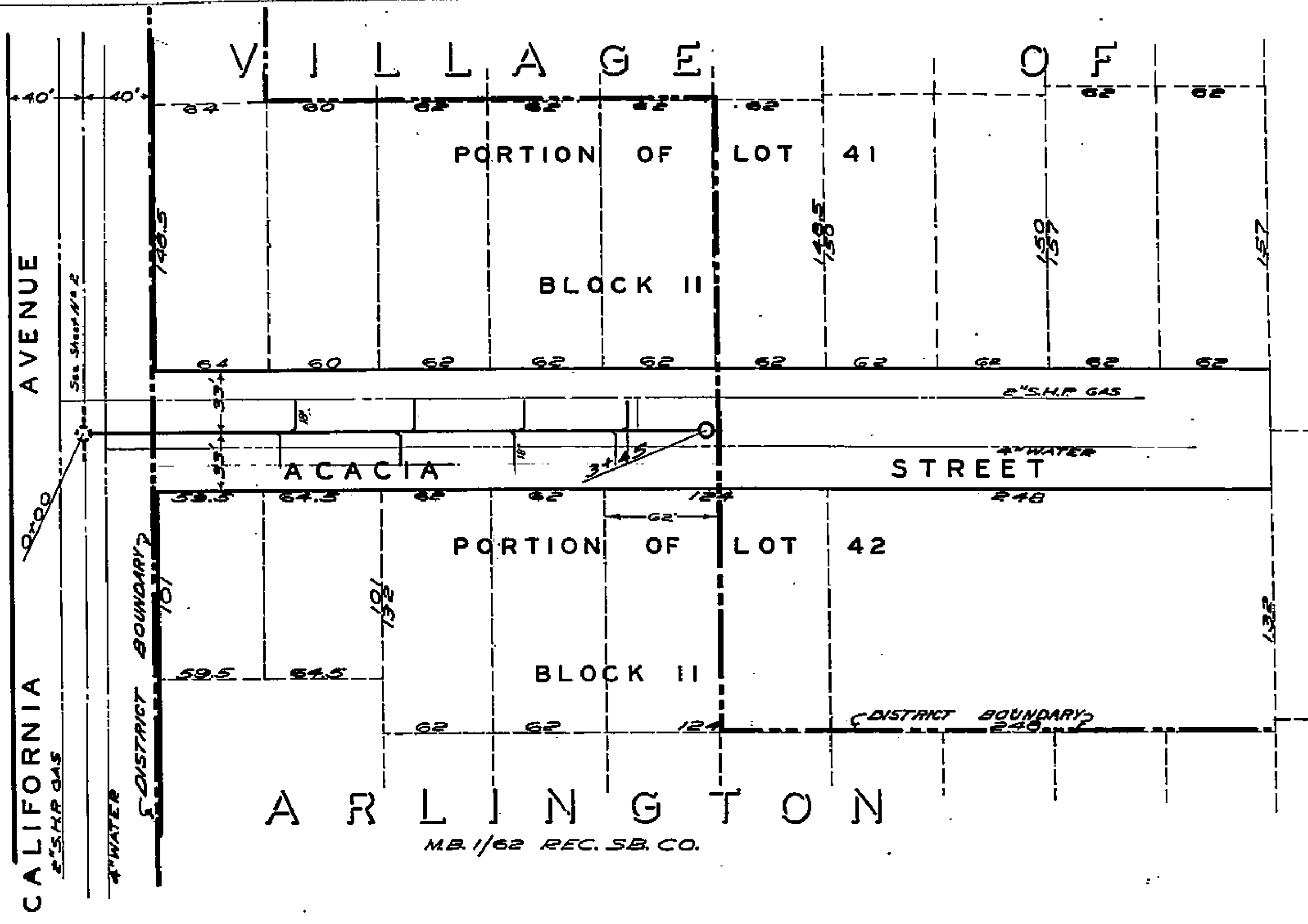
See Sheet No 208

SCALES:
Horizontal 1" = 50'
Vertical 1" = 5'



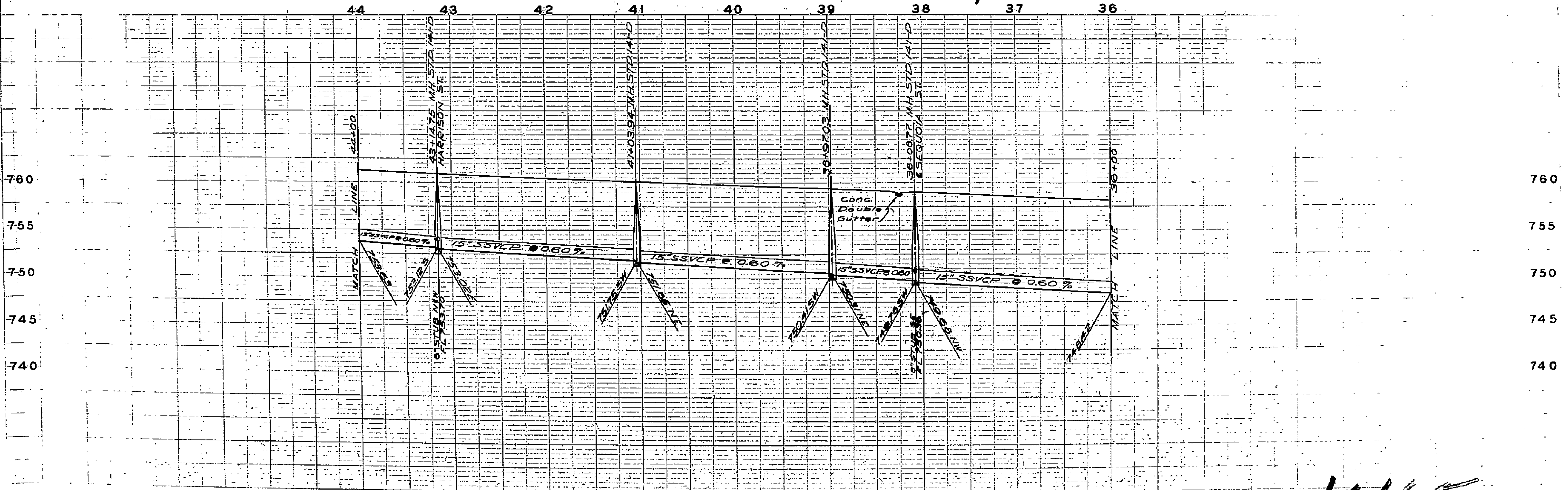
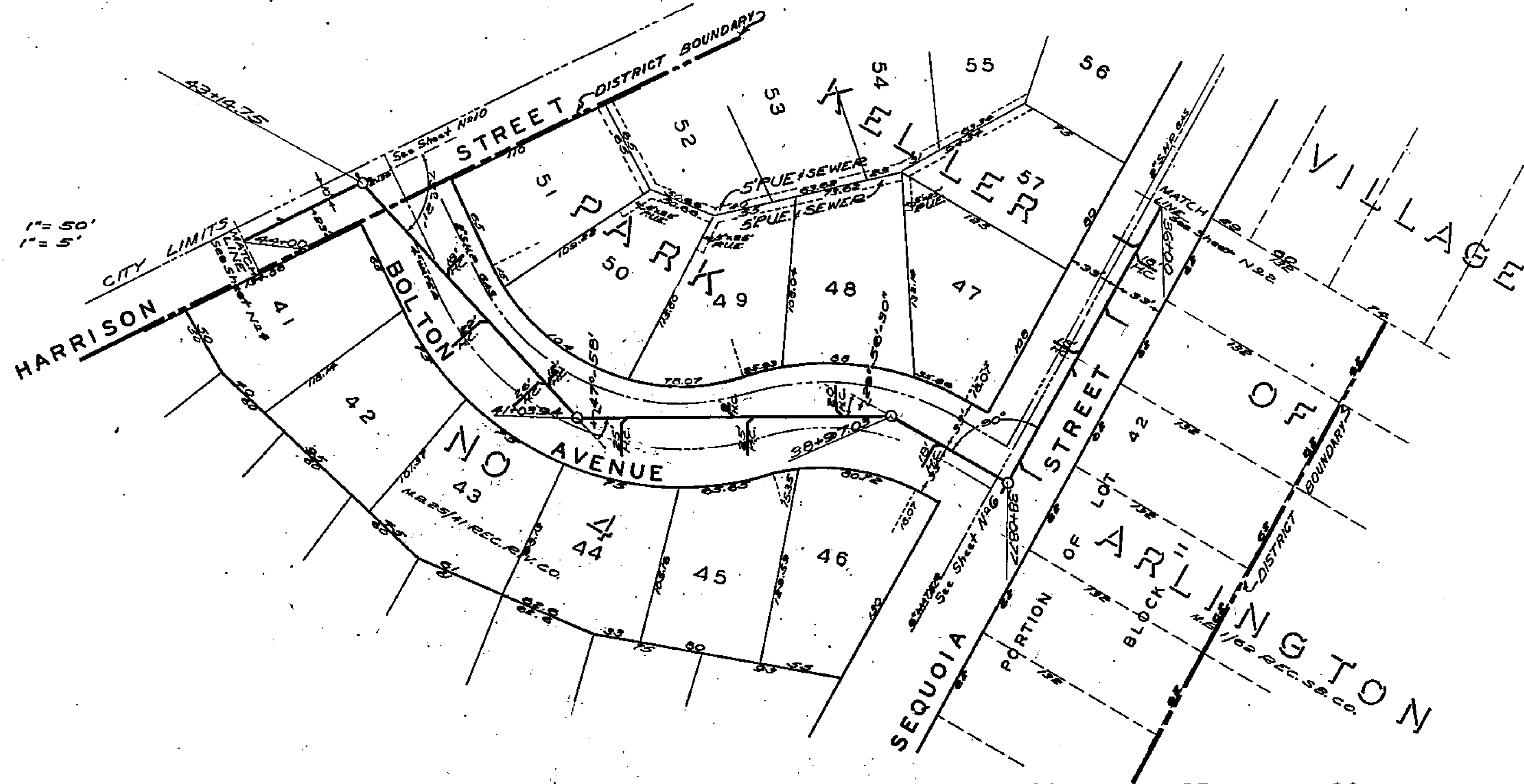
1465

SCALES: Horizontal 1"=50'
Vertical 1"=5'



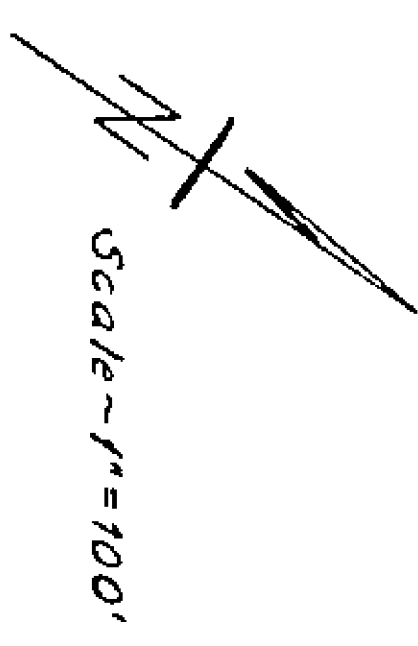
1465

SCALES:
Horizontal 1" = 50'
Vertical 1" = 5'

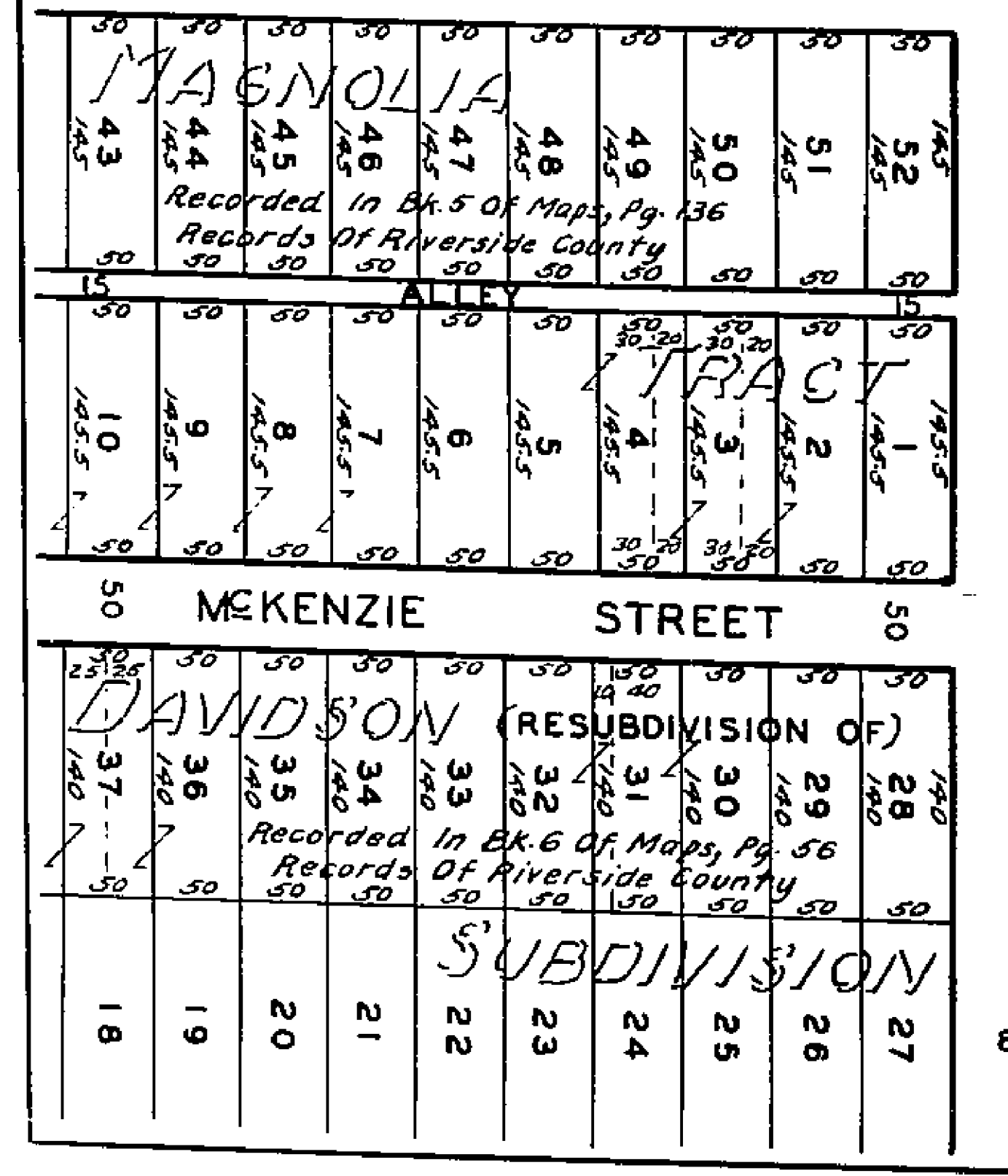
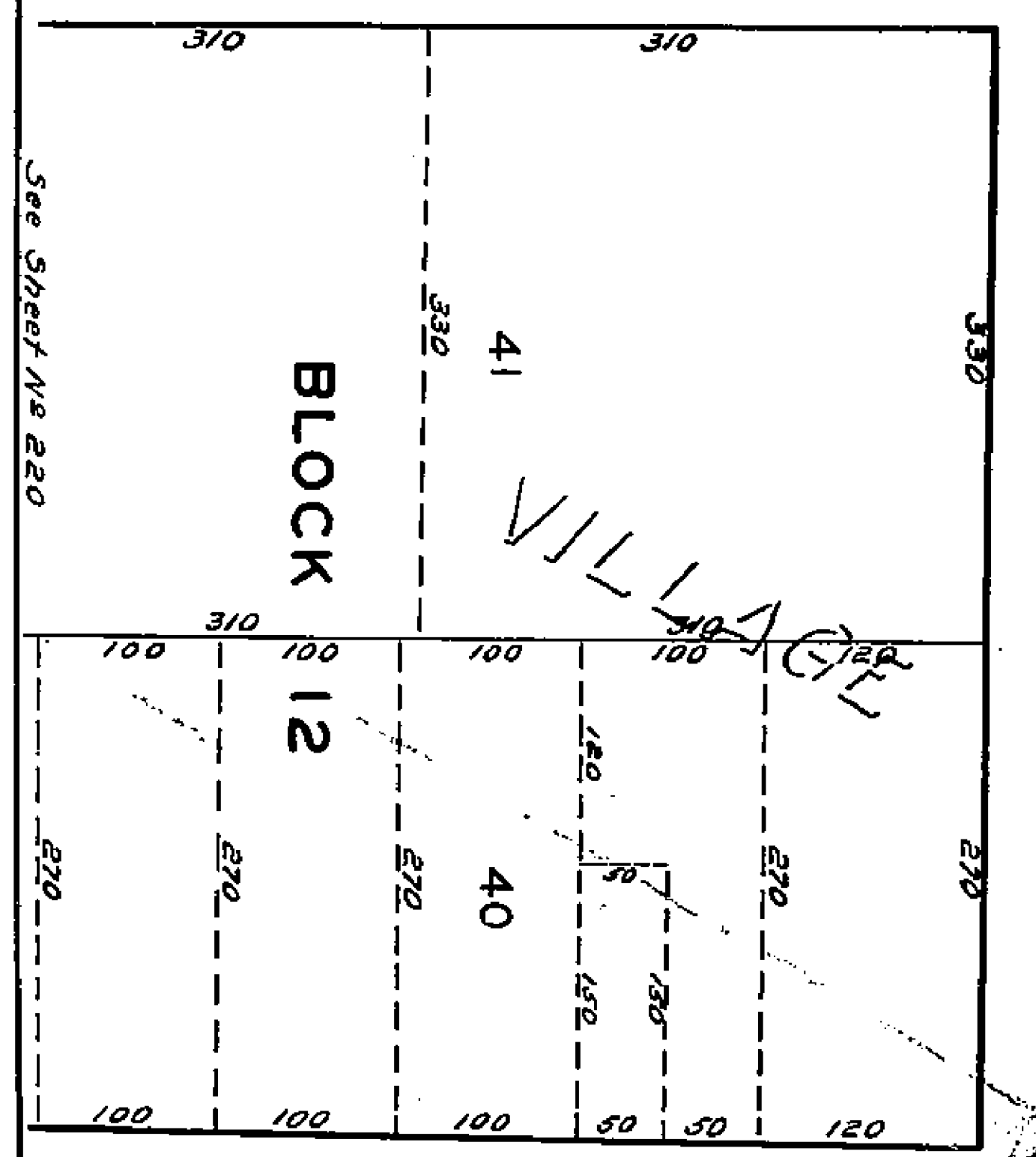
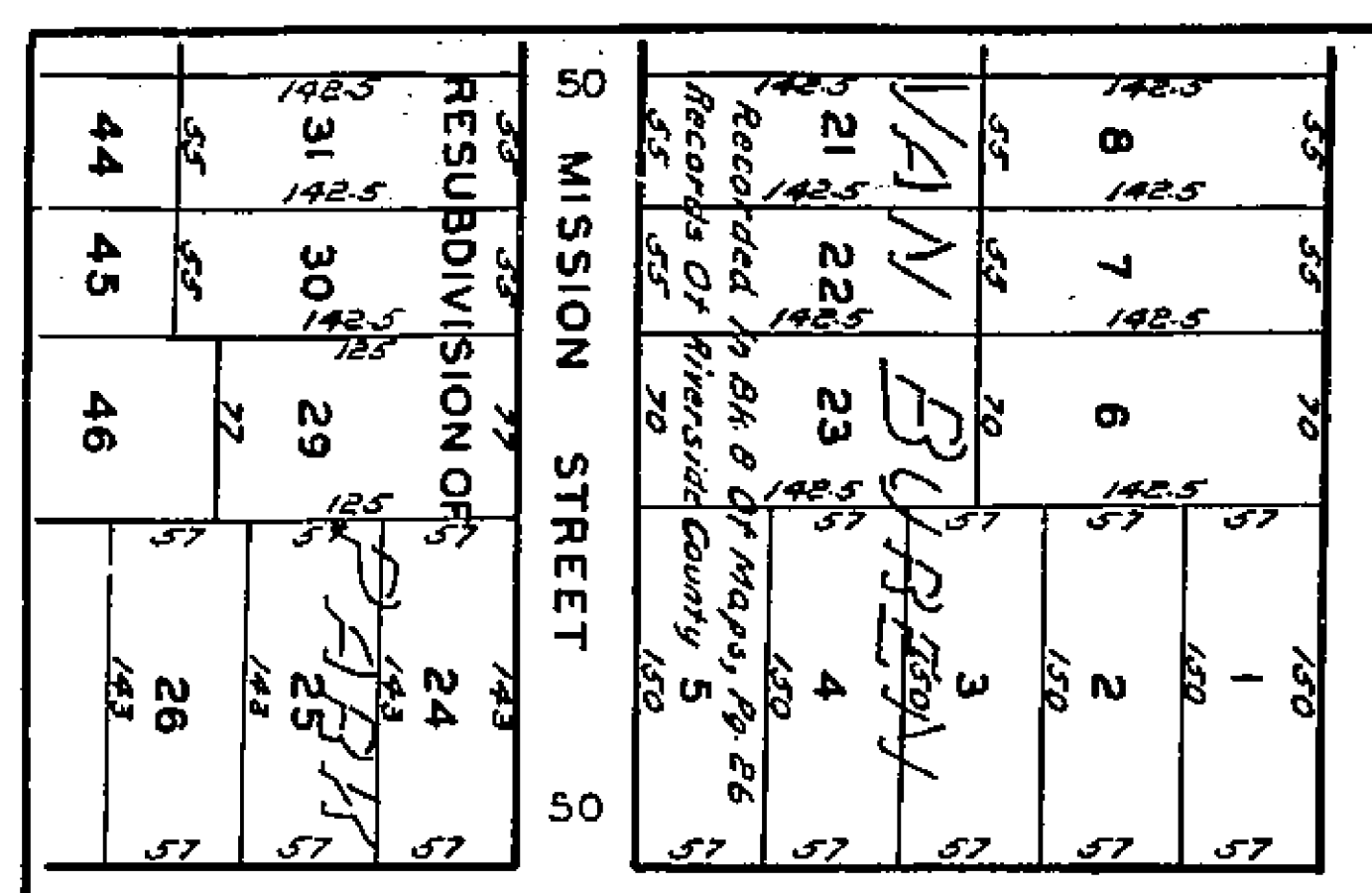
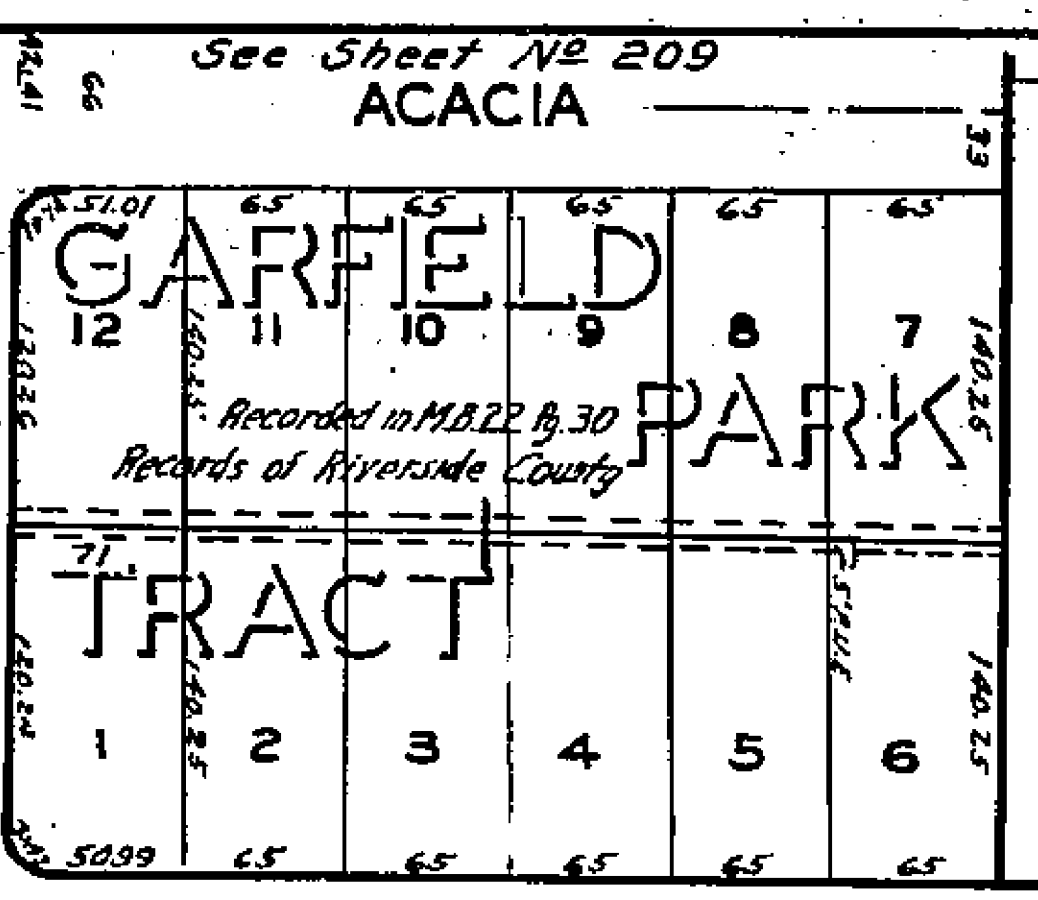
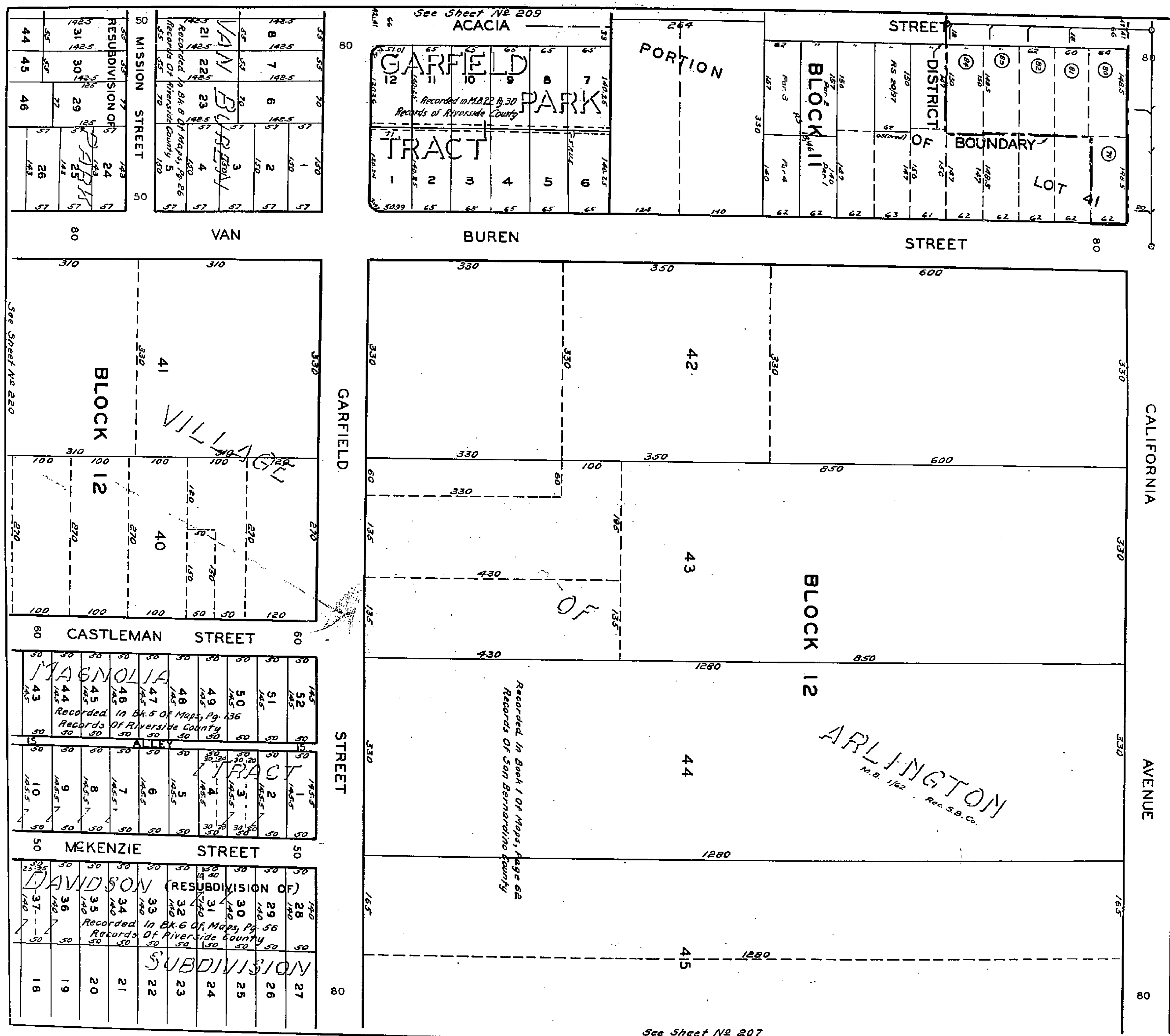


1465

97A

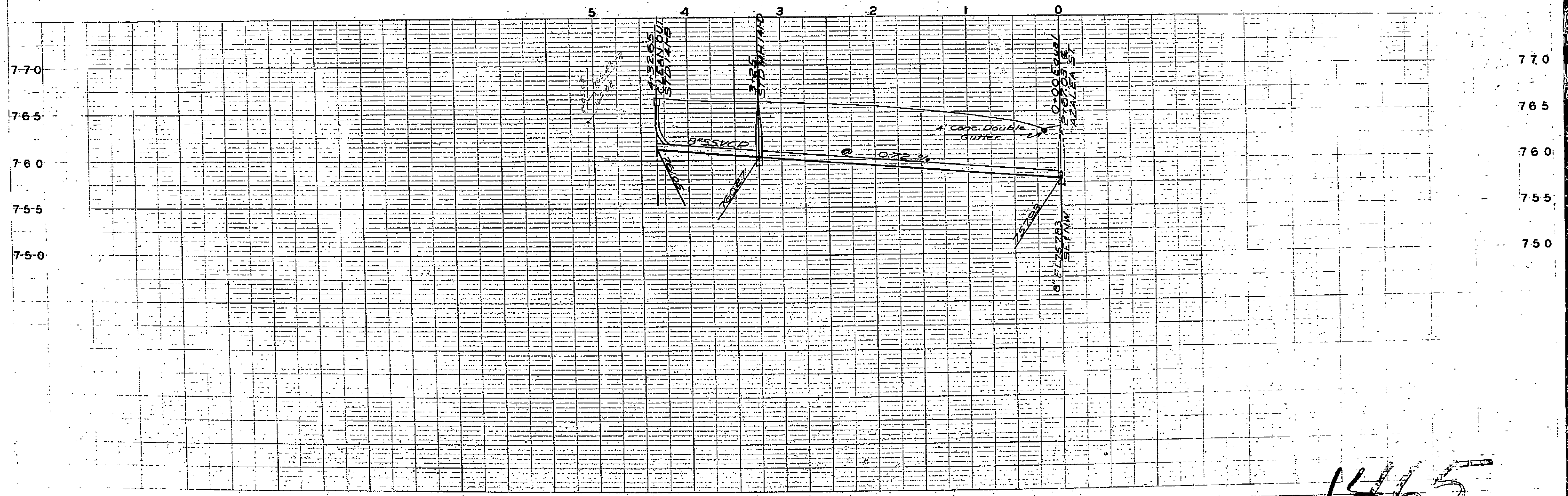
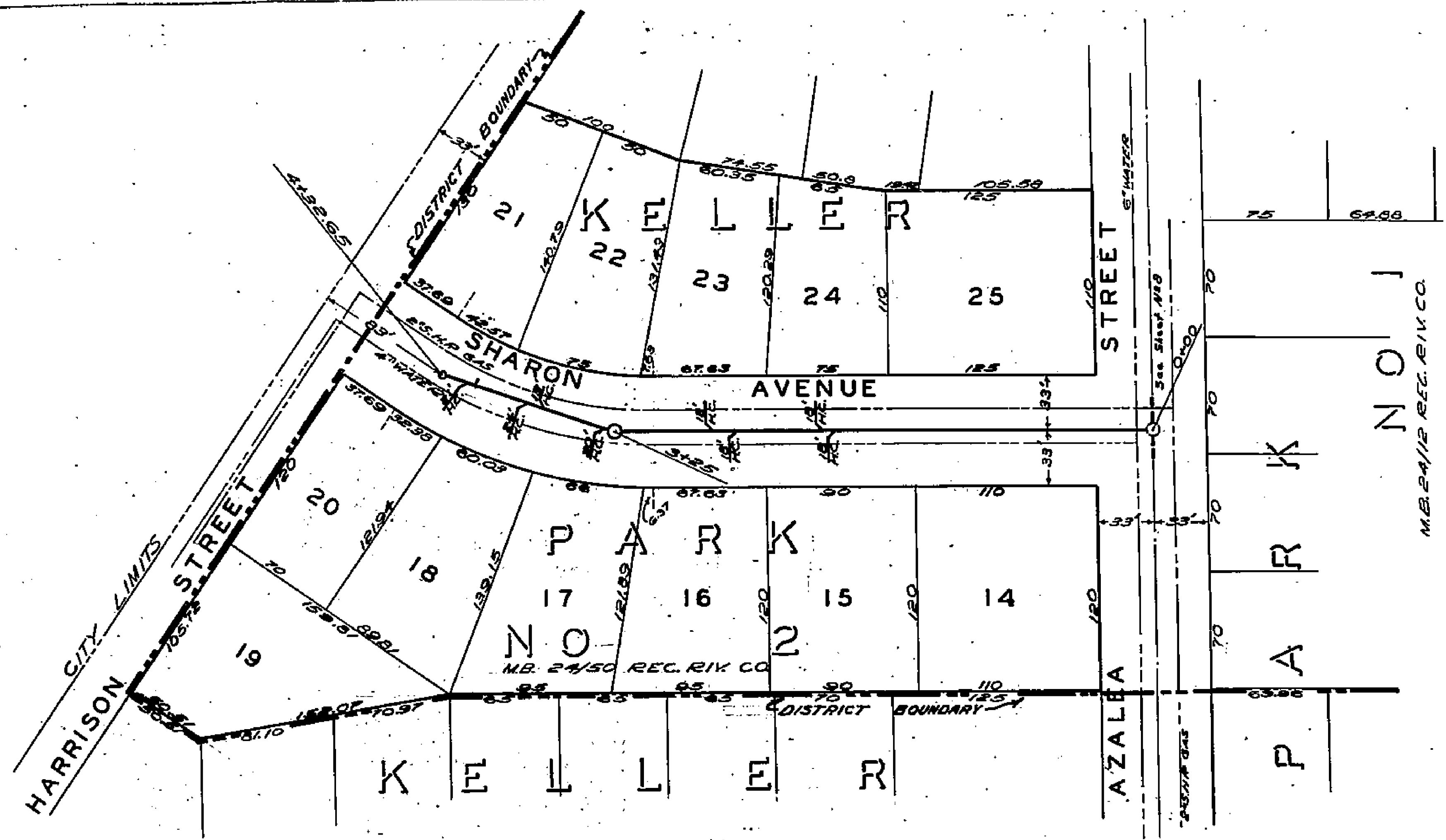
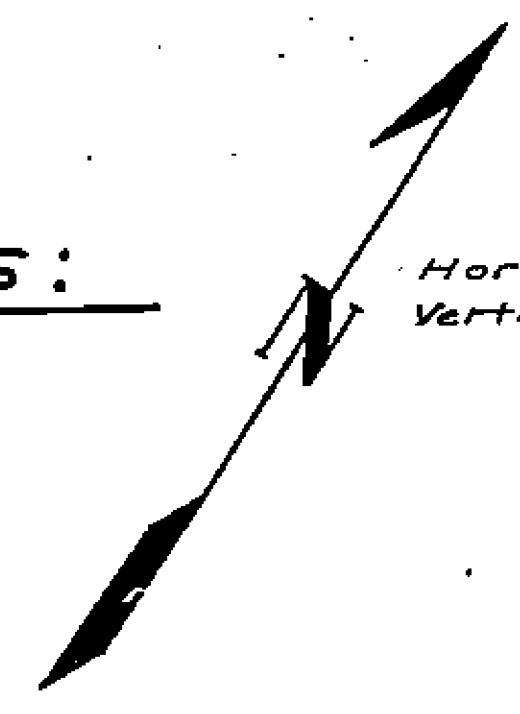


See Sheet No 197



See Sheet No 207

SCALES:
Horizontal 1" = 50'
Vertical 1" = 5'



1465