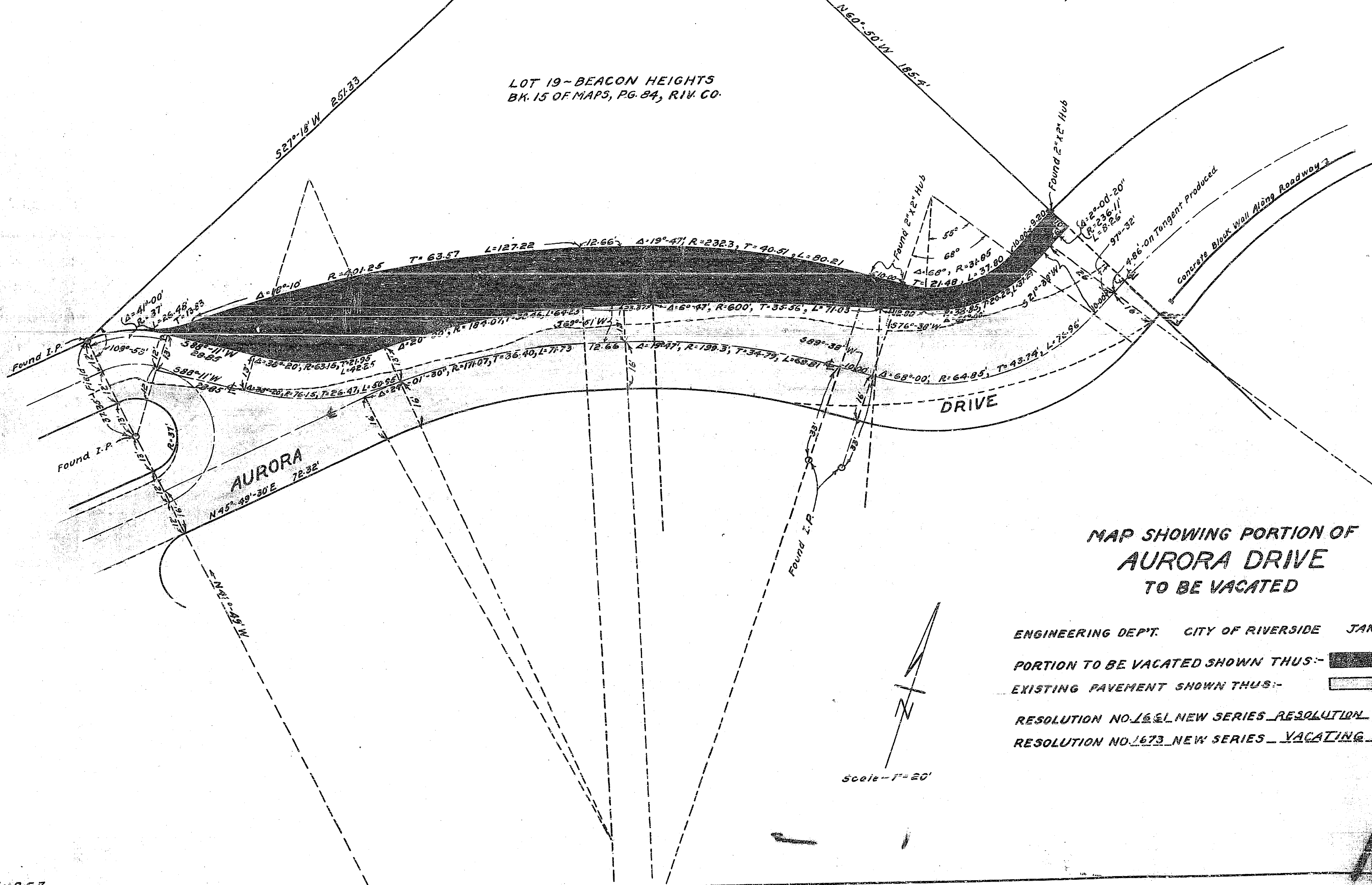


LOT 19 - BEACON HEIGHTS
BK. 15 OF MAPS, PG. 84, RIV. CO.



MAP SHOWING PORTION OF
AURORA DRIVE
TO BE VACATED

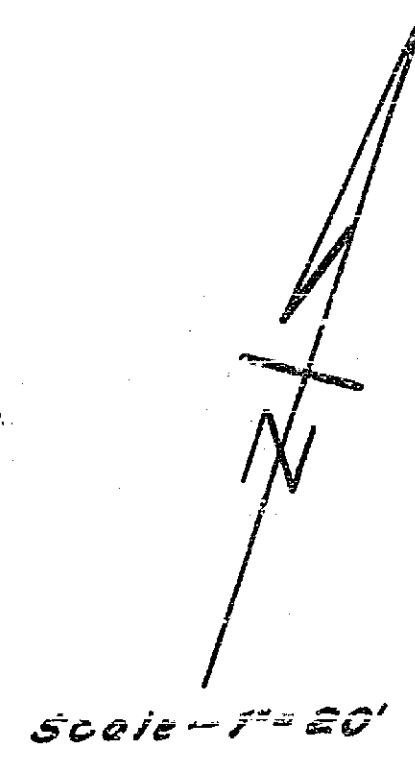
ENGINEERING DEPT. CITY OF RIVERSIDE JANUARY, 1930.

PORTION TO BE VACATED SHOWN THUS: 

EXISTING PAVEMENT SHOWN THUS: 

RESOLUTION NO. 1651 NEW SERIES RESOLUTION OF INTENTION

RESOLUTION NO. 1673 NEW SERIES VACATING



146-A