

PLAN NO 1470
 FOR THE CONSTRUCTION OF
 CONCRETE SIDEWALKS
 IN THE
SIDEWALK IMPROVEMENT
DISTRICT NO. 2
 RIVERSIDE, CALIFORNIA
 DISTRICT BOUNDARY SHOWN THUS -----
 SCALE 1 IN. = 50 FT.
 F.B. 540

NOTE: SIDEWALKS TO BE CONSTRUCTED
 SHOWN THUS
 SIDEWALK CONSTRUCTION AS
 PER STDS 107 & 108A AS
 LOCATION PERMITS

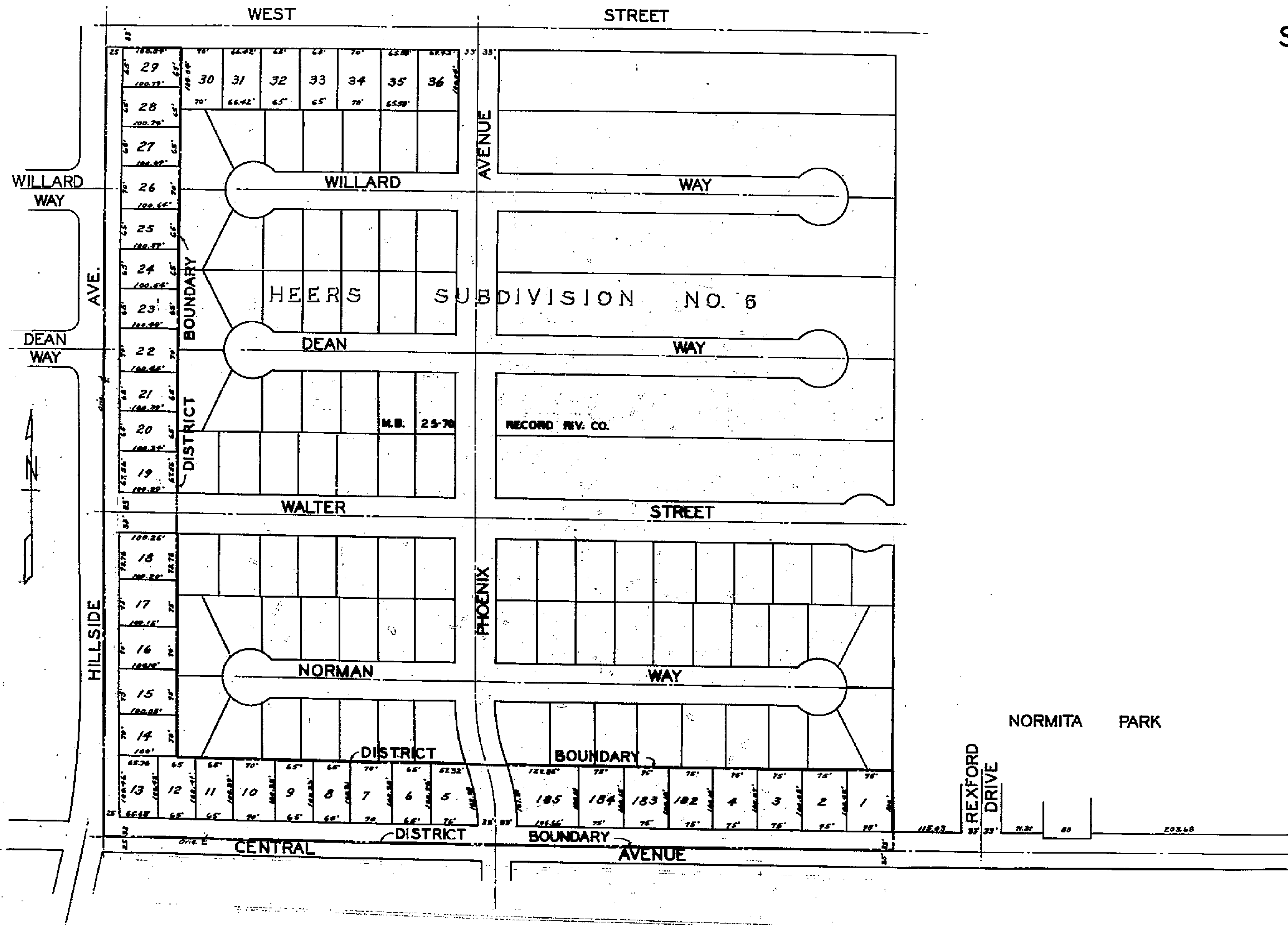
JULY 1954
 APPROVED: *M. H. Irvine*
 M.H. IRVINE - REG. C.E. NO. 301

14

MAP NO. 1470-A
 SHOWING THE LANDS INCLUDED WITHIN
 THE ASSESSMENT DISTRICT TO BE BENEFITED
 BY THE CONSTRUCTION OF CONCRETE SIDEWALKS
 IN THE MATTER OF

SIDEWALK IMPROVEMENT DISTRICT NO. 2

RIVERSIDE CALIFORNIA
 DISTRICT BOUNDARY SHOWN THUS -----
 SCALE 1 IN = 100 FT.
 APPROVED: *M. K. Irvine*
 M.H. IRVINE - REG. C.E. NO. 3011



1471