

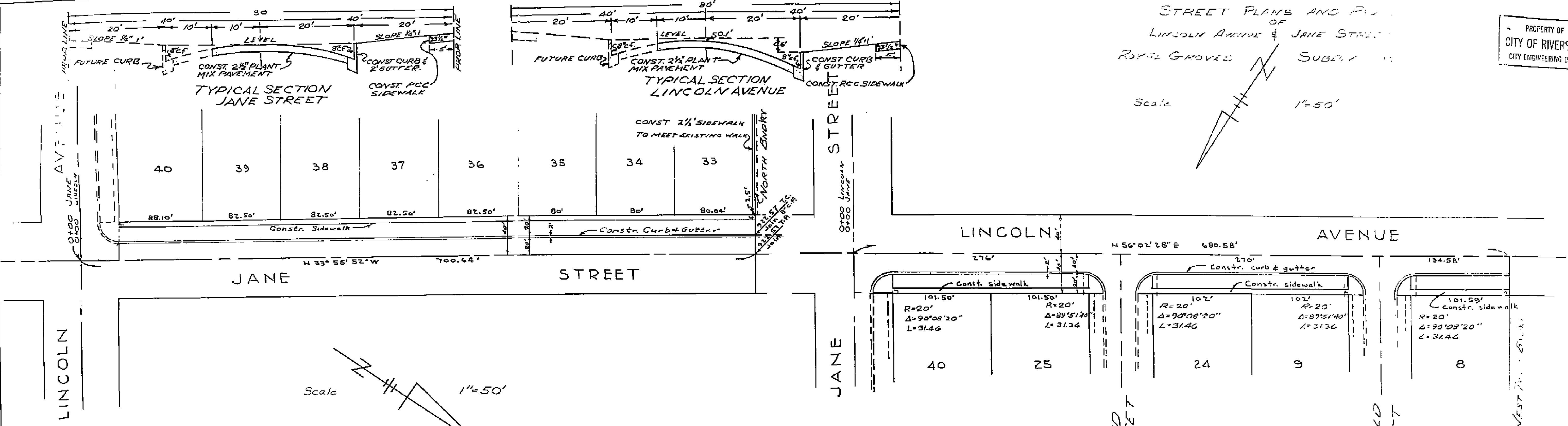
PROPERTY OF
CITY OF RIVERSIDE
CITY ENGINEERING DEPT.

PLAN
REVISED
NOTE BOOK
NO. 130

PROPERTY OF
CITY OF RIVERSIDE
CITY ENGINEERING DEPT.

STREET PLANS AND PROFILES
OF
LINCOLN AVENUE & JANE STREET
ROYAL GROVES SUBDIVISION

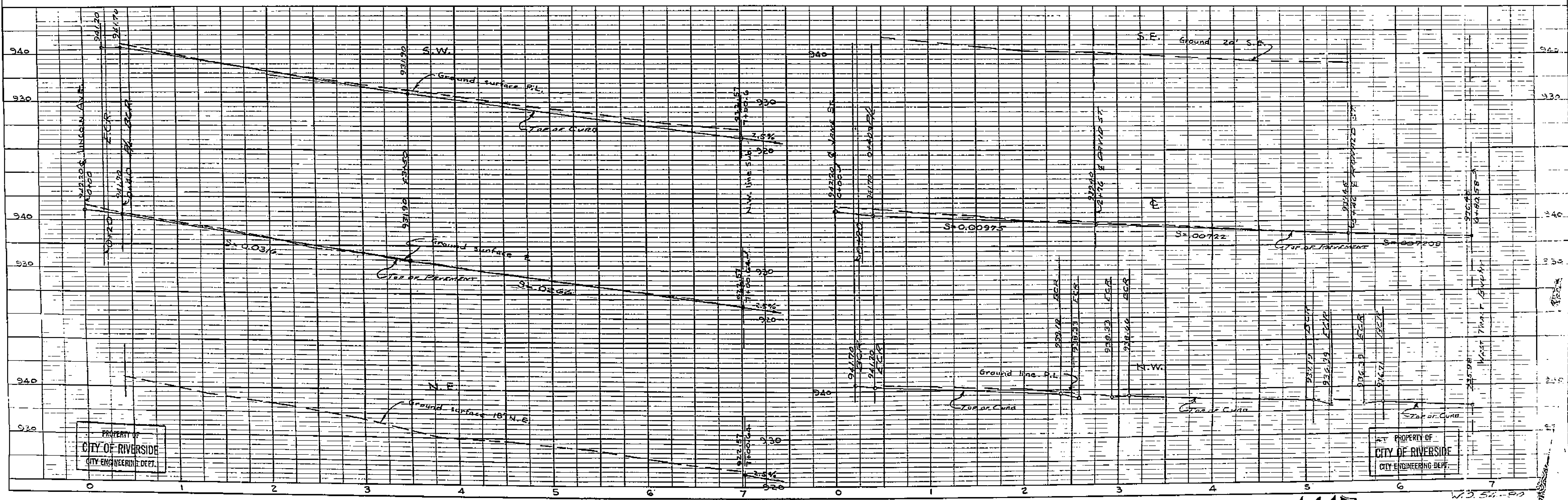
Scale 1"=50'



BENCH MARK - SPIKE IN TELEPHONE
 POLE # R-3860T -
 LOCATED 200' NE,
 FROM INT. OF JANE &
 LINCOLN ST.
 ELEV - 943.02

By
ALBERT A. WEBB A.S.C.E.
 CIVIL ENGINEERS - RIVERSIDE, CALIF.

APPROVED August 6, 1954
 By **M. H. Irvine**
 CITY ENGINEER



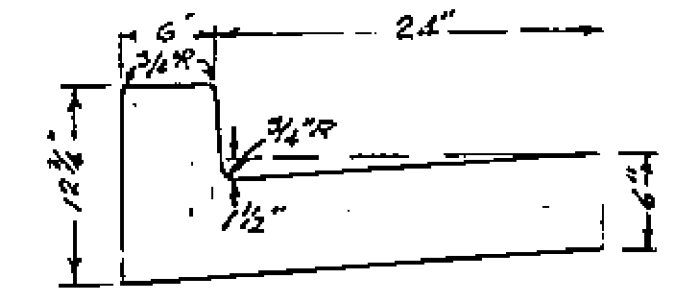
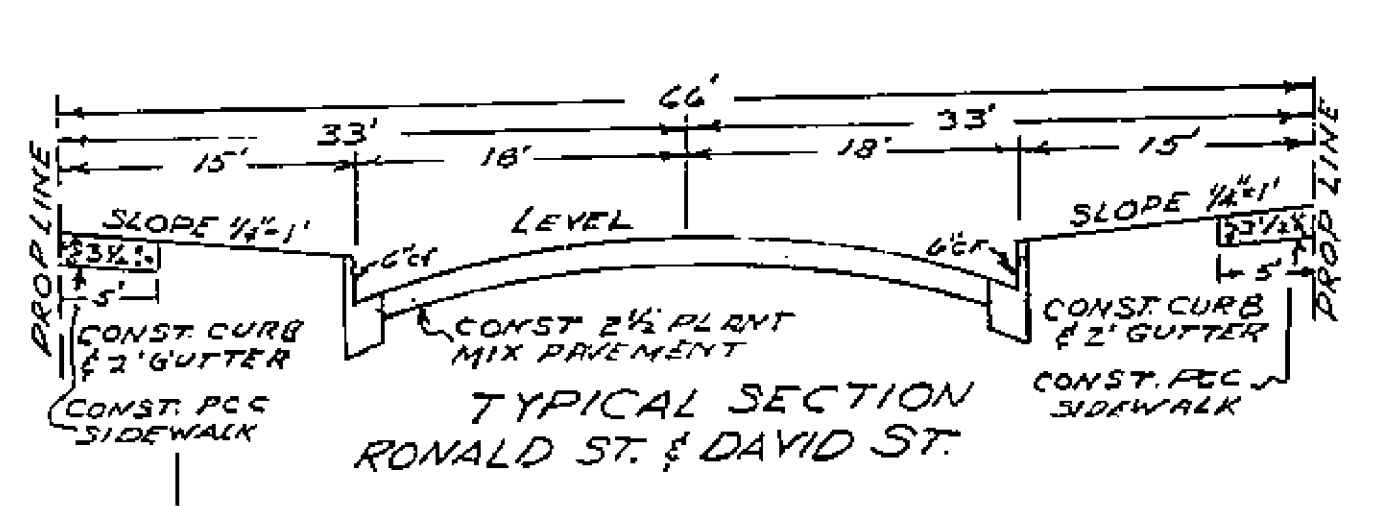
PROFILE
 PROPERTY OF
 CITY OF RIVERSIDE
 CITY ENGINEERING DEPT.

PROPERTY OF
 CITY OF RIVERSIDE
 CITY ENGINEERING DEPT.

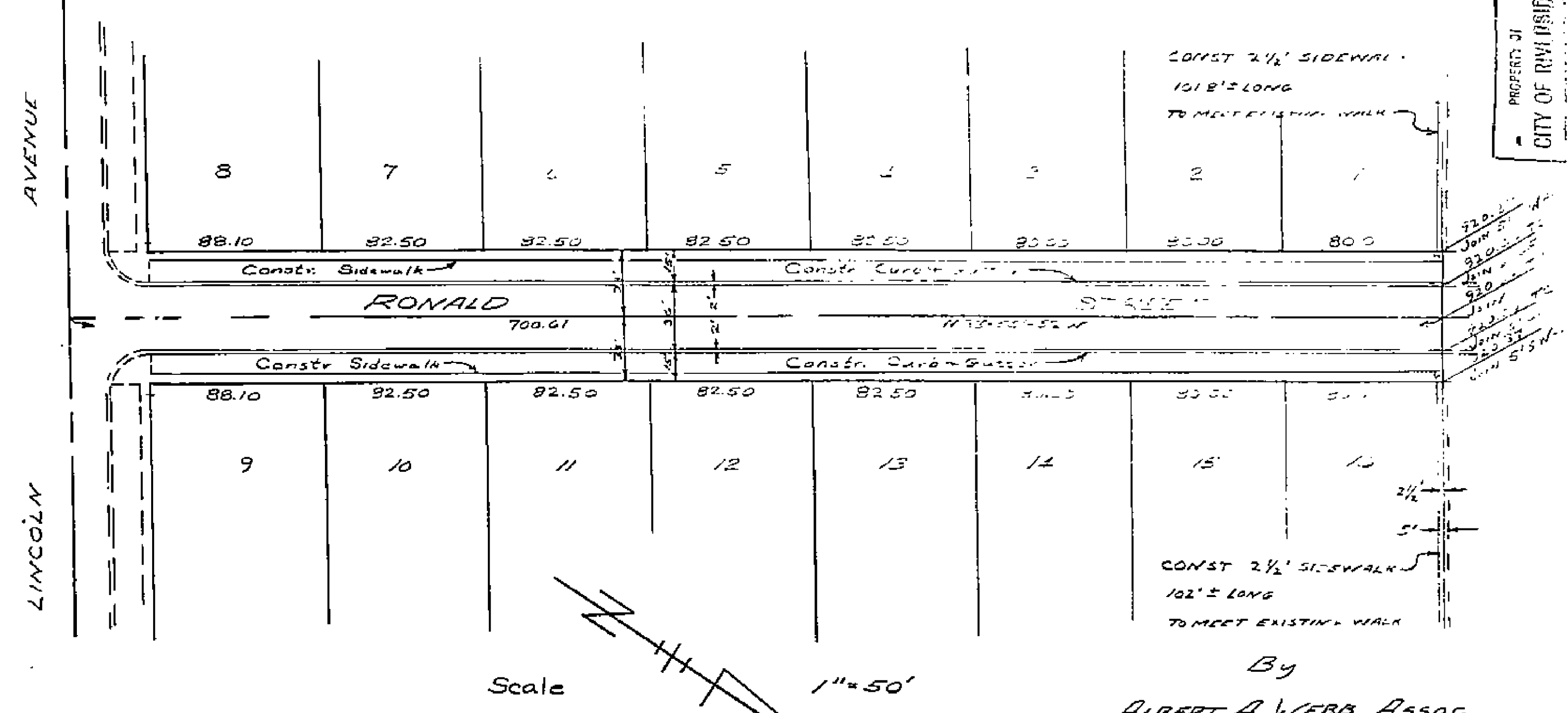
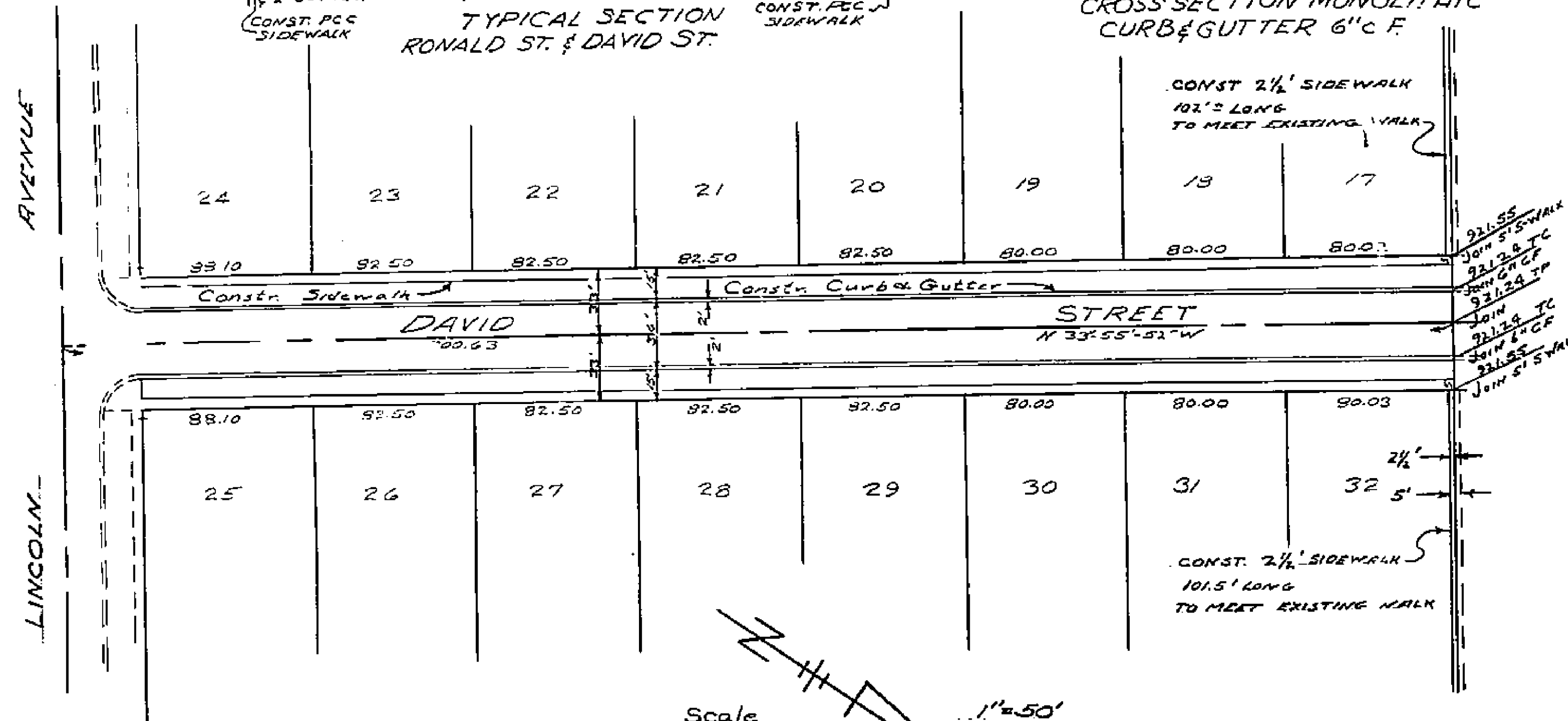
14771

W 35.51-815
 R 3 230

PROPERTY OF
CITY OF RIVERSIDE
CITY ENGINEERING DEPT.



STREET PLANS & P
OF
RONALD ST & DA
DAVID ST & DAVID ST

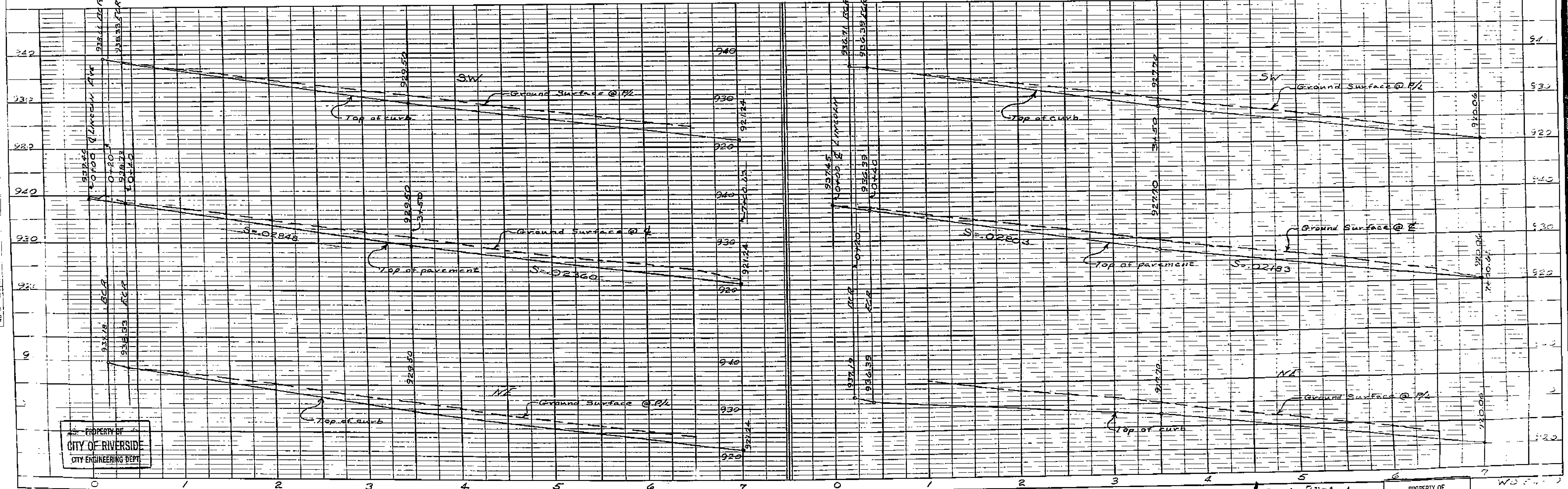


Scale 1" = 50'

BENCH MARK - SPIKE IN TELEPHONE POLE # R-3860T
LOCATED 200' N.E. FROM INT. OF
DAVID & LINCOLN
ELEV. - 943.02

APPROVED August 6, 1954
By M. H. Irvine
CITY ENGINEER

By
ALBERT A WEBB ASSOC
CIVIL ENGINEERS - RIVERSIDE, CALIF
AUGUST 1954



PROPERTY OF
CITY OF RIVERSIDE
CITY ENGINEERING DEPT.

PROPERTY OF
CITY OF RIVERSIDE
CITY ENGINEERING DEPT.

161 11

PROPERTY OF
CITY OF RIVERSIDE
CITY ENGINEERING DEPT.

SEWER PLANS & PROFILE
OF
RONALD ST & DAVID ST
IN
ROYAL GROVES SUBD
Reimb Contr. #12

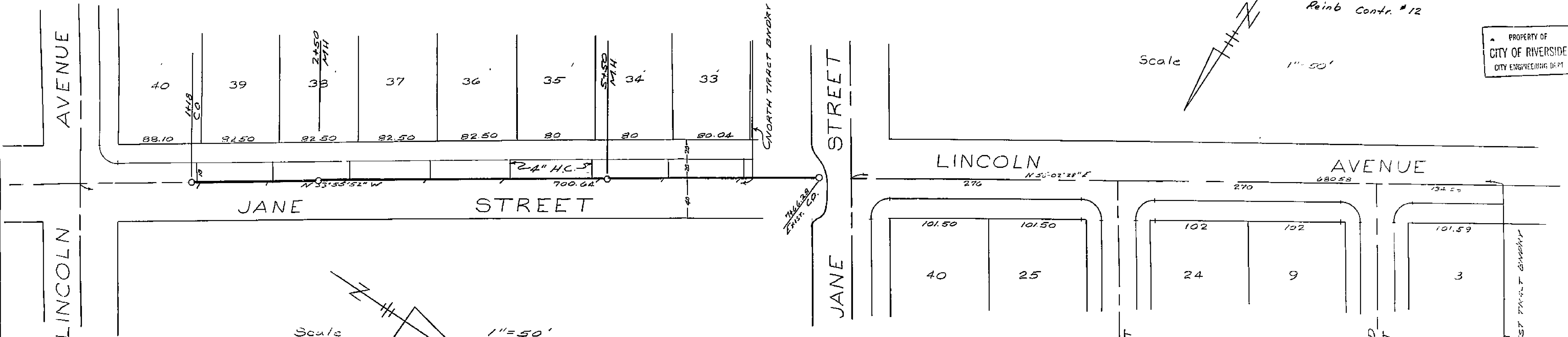
PROPERTY OF
CITY OF RIVERSIDE
CITY ENGINEERING DEPT.

Scale 1" = 50'

Scale 1" = 50'

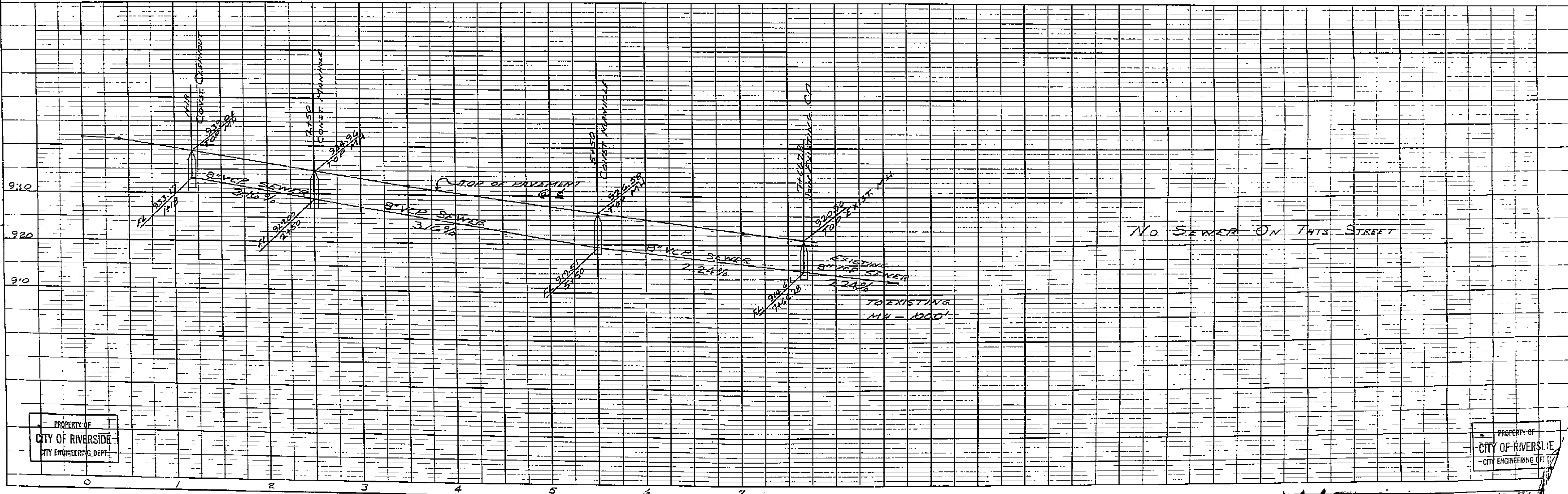
DATE
BY
PLAN
REVISED
NOTE BOOK
NO.

DATE
BY
PROFILE
REVISED
NOTE BOOK
NO.



By
ALBERT H. WEBB Assoc.
CIVIL ENGINEERS — RIVERSIDE, CALIF.
AUGUST 1954

APPROVED August 6, 1954
By M. H. Irvine
CITY ENGINEER



PROPERTY OF
CITY OF RIVERSIDE
CITY ENGINEERING DEPT.

PROPERTY OF
CITY OF RIVERSIDE
CITY ENGINEERING DEPT.

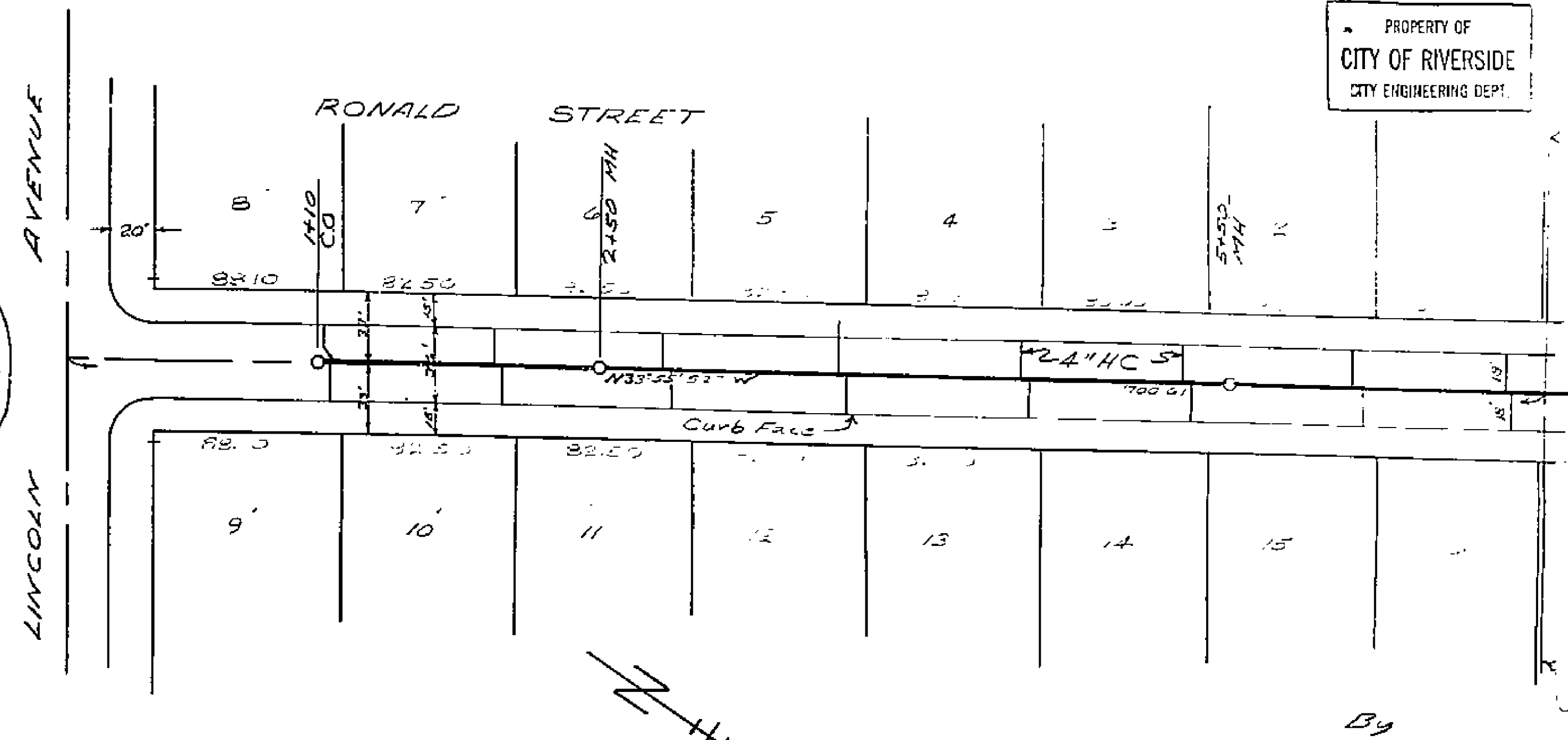
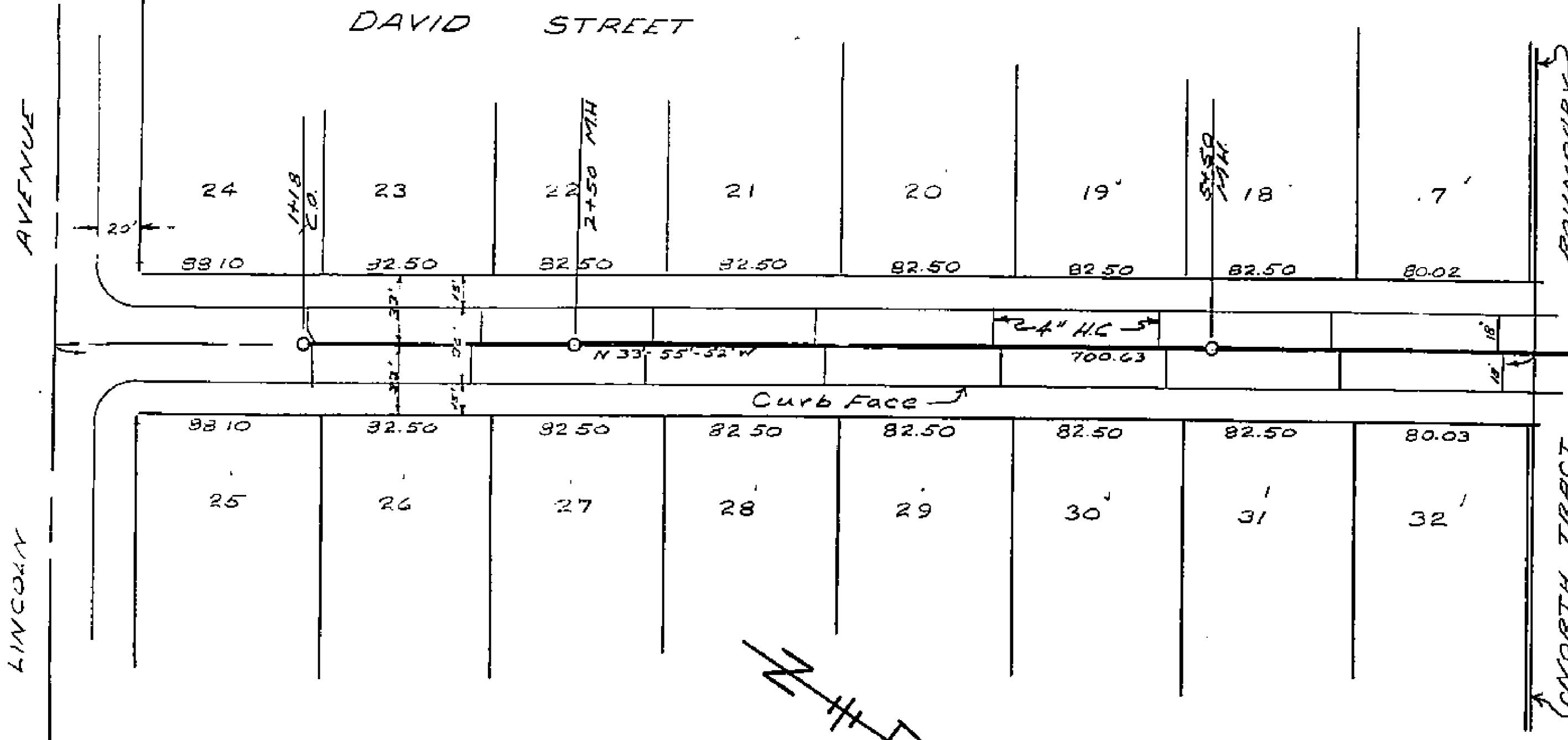
14771

WD 54
FB 23

PROPERTY OF
CITY OF RIVERSIDE
CITY ENGINEERING DEPT.

SEWER PLANS
RONALD & DAVID
ROYAL SEWER

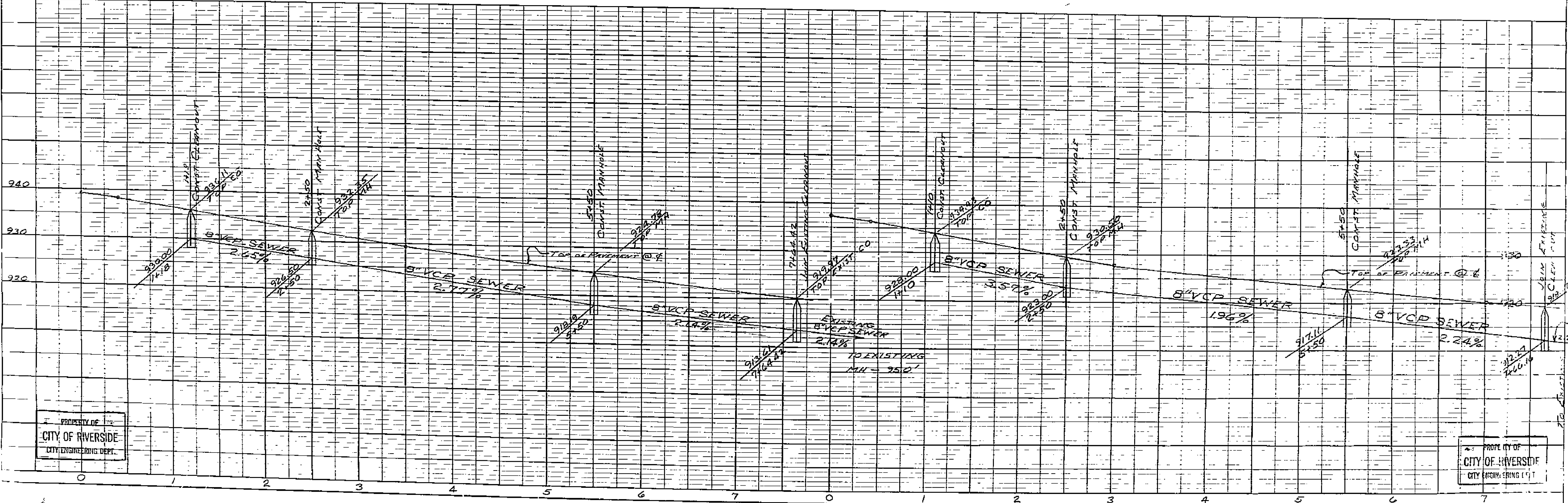
PROPERTY OF
CITY OF RIVERSIDE
CITY ENGINEERING DEPT.



APPROVED August 6, 1954

By M. H. Irvine
CITY ENGINEER

By Robert E. Williams
CIVIL ENGINEER - RIVERSIDE, CALIF.
August 1954



PROPERTY OF
CITY OF RIVERSIDE
CITY ENGINEERING DEPT.

PROPERTY OF
CITY OF RIVERSIDE
CITY ENGINEERING DEPT.

1471