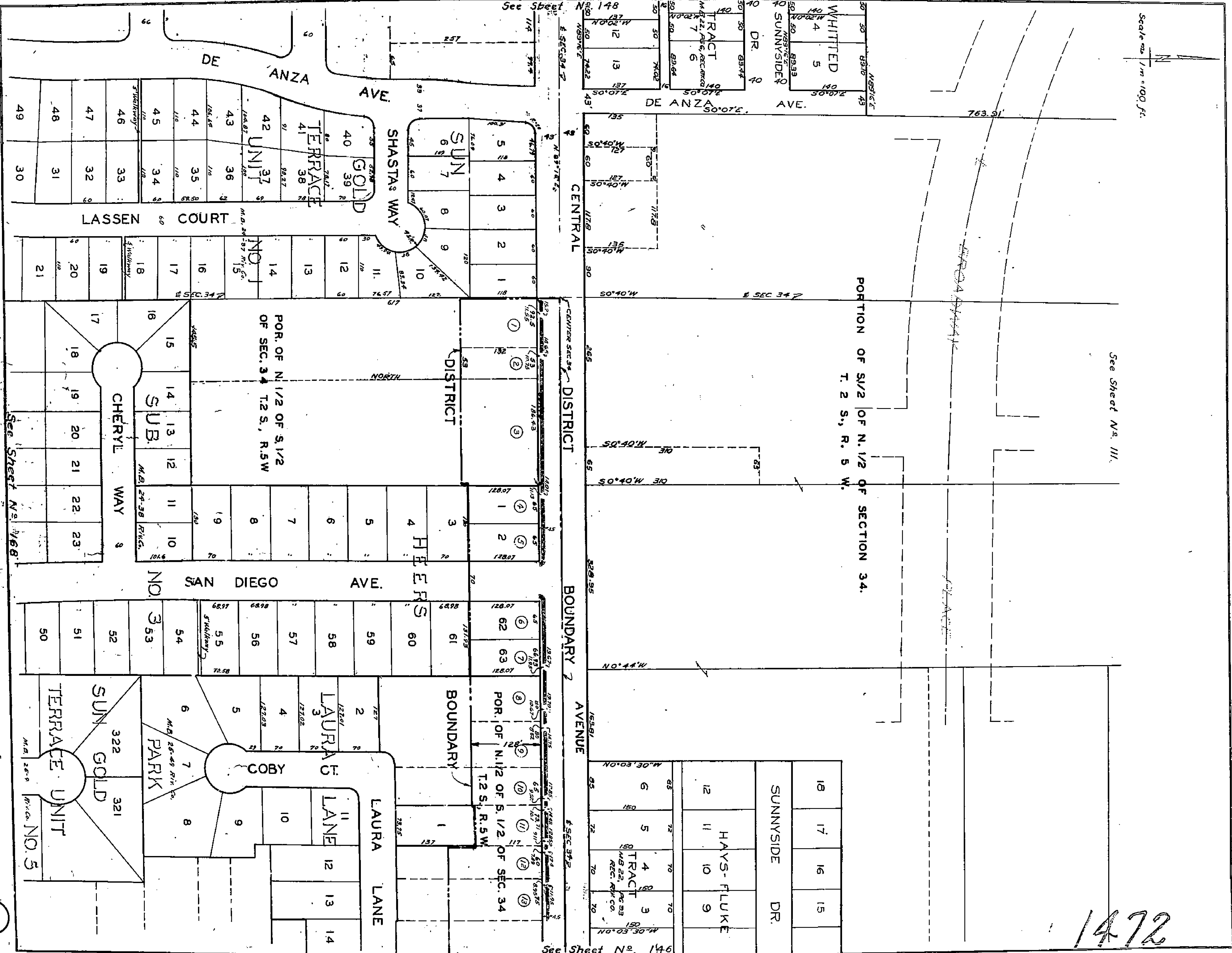


Scale 1" = 100' ft.

See Sheet No. III.

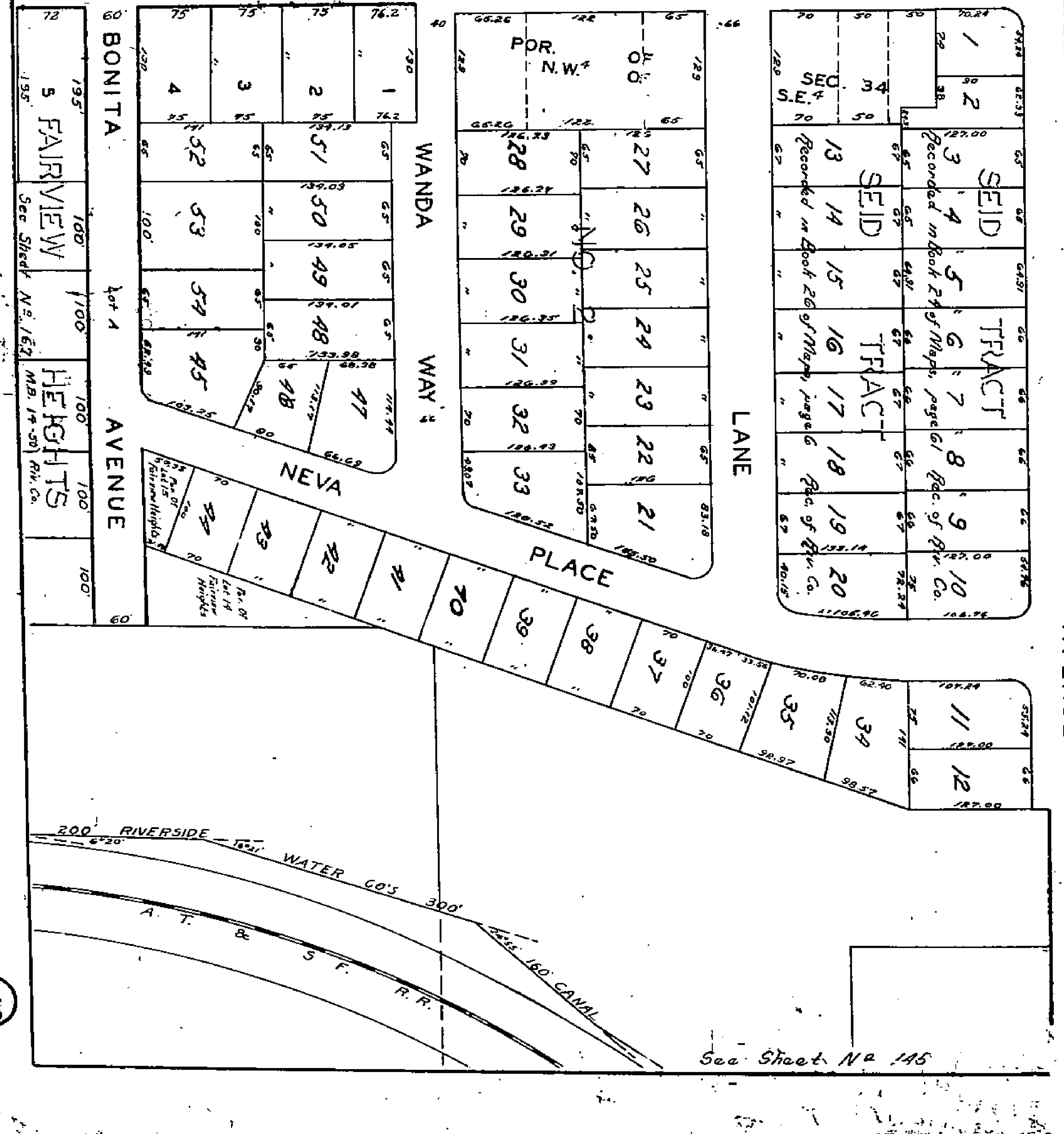
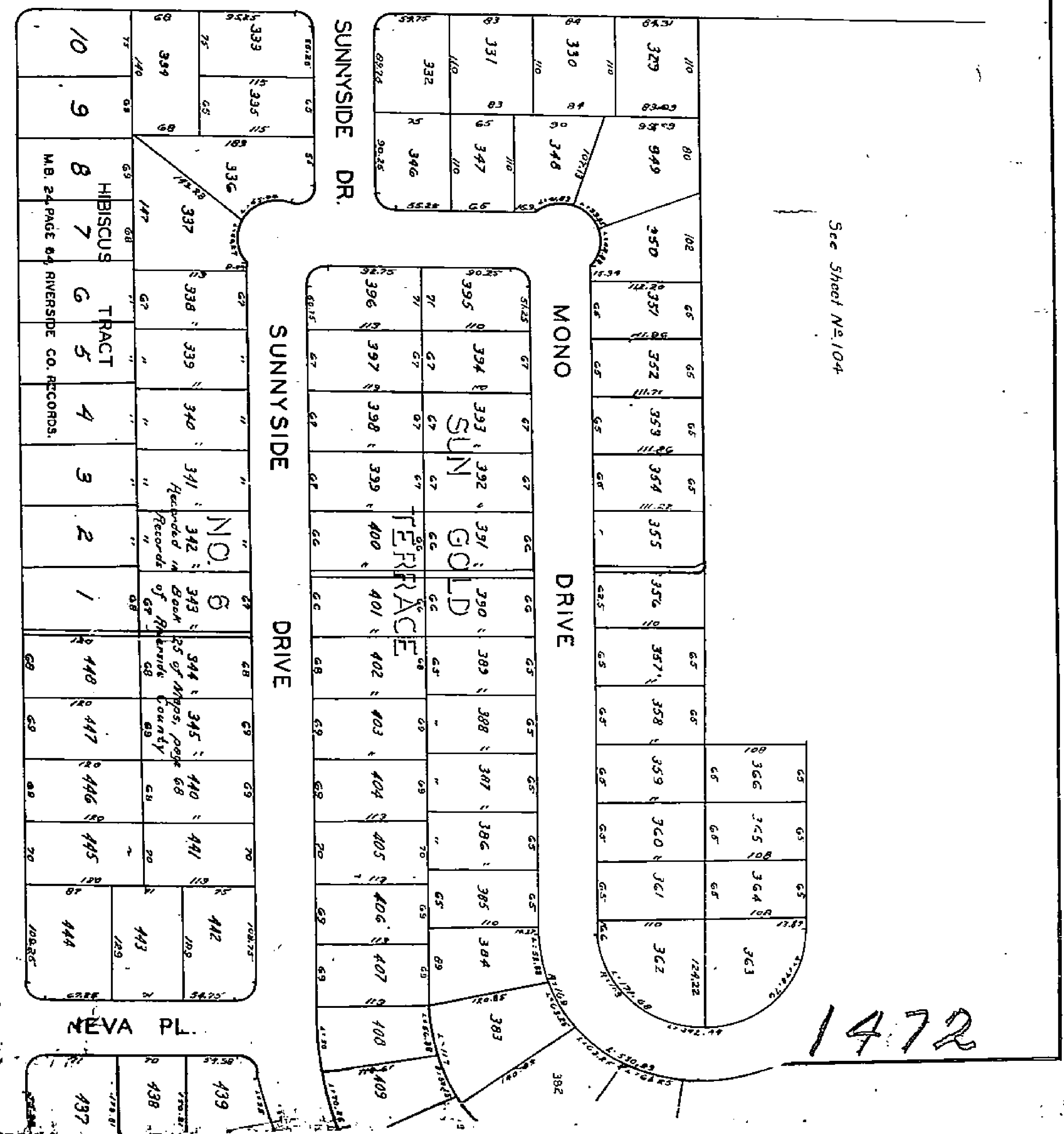
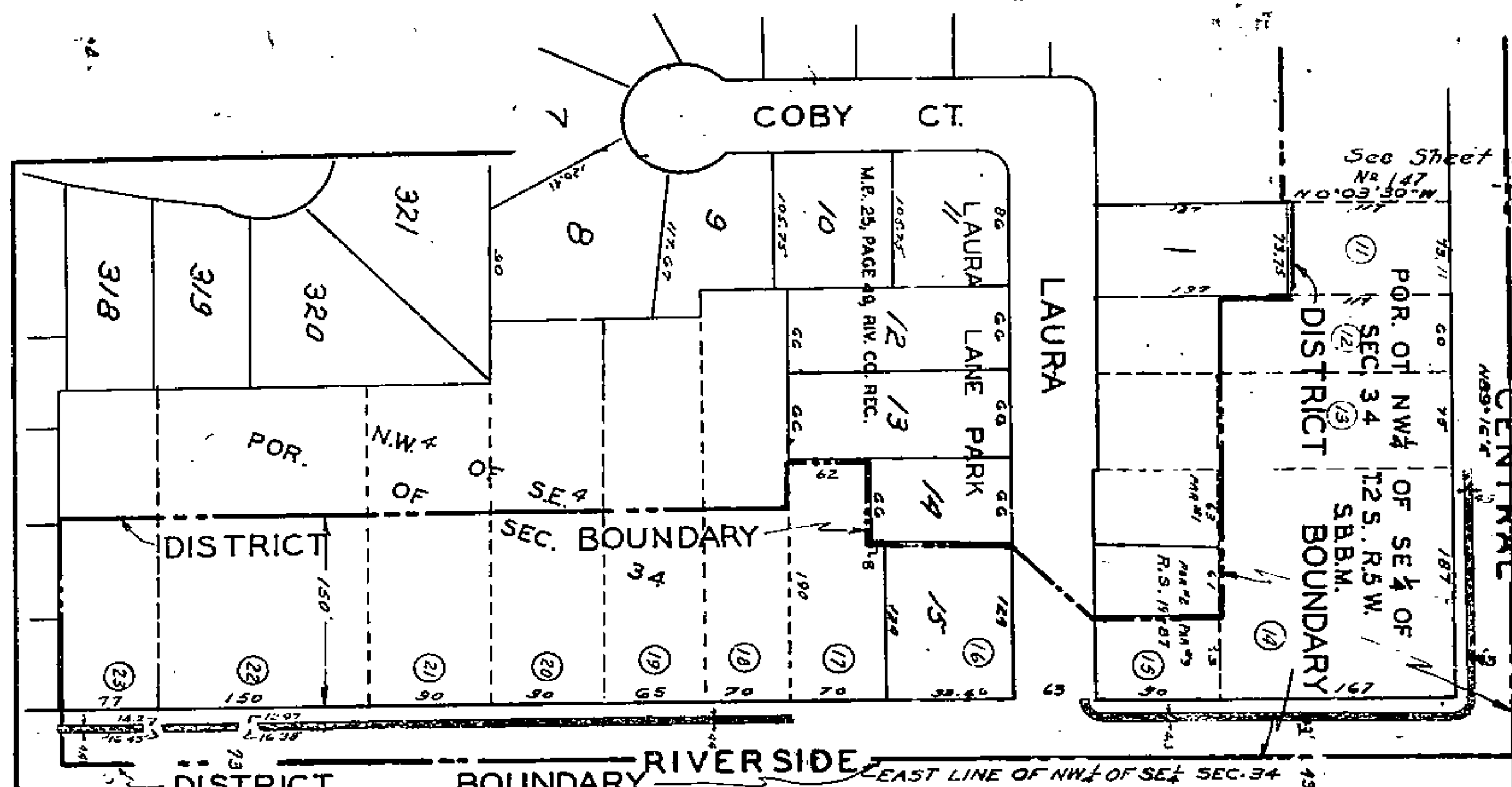
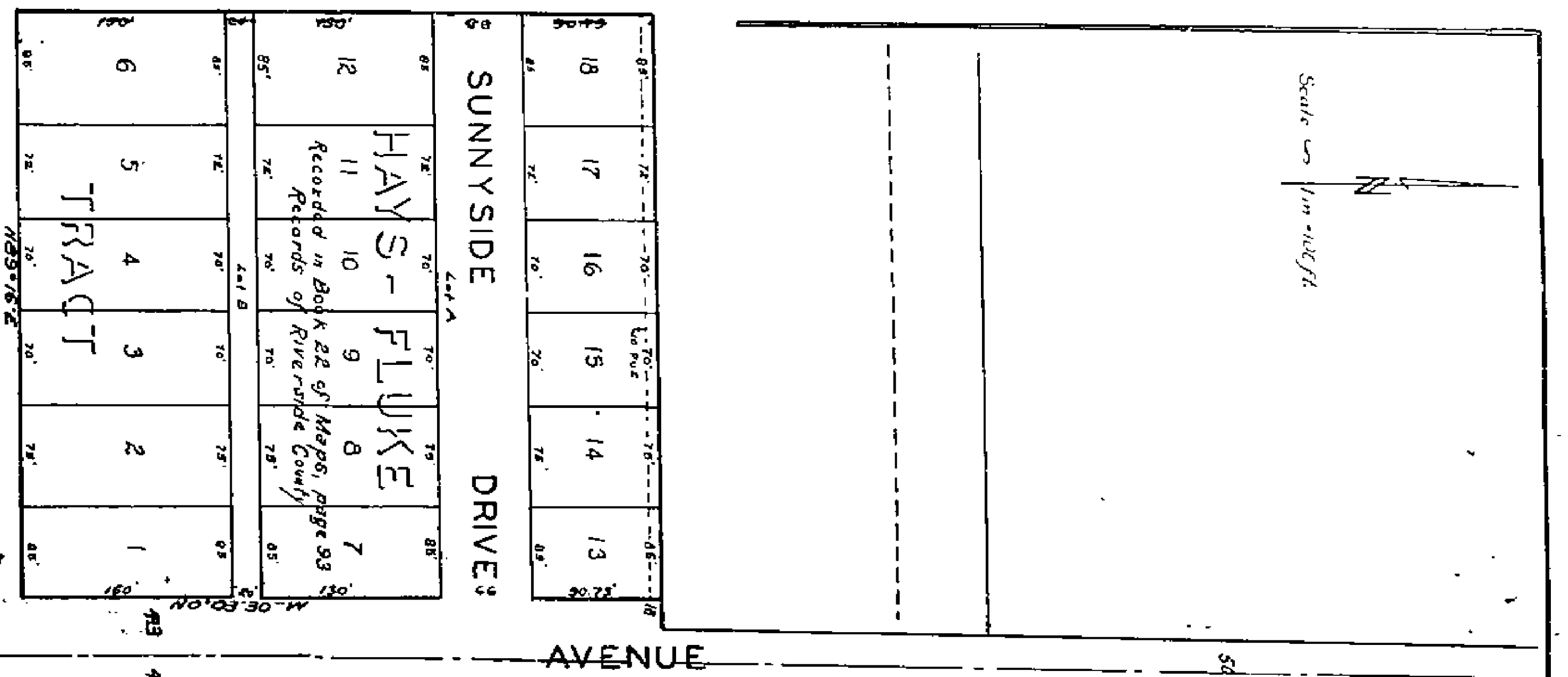
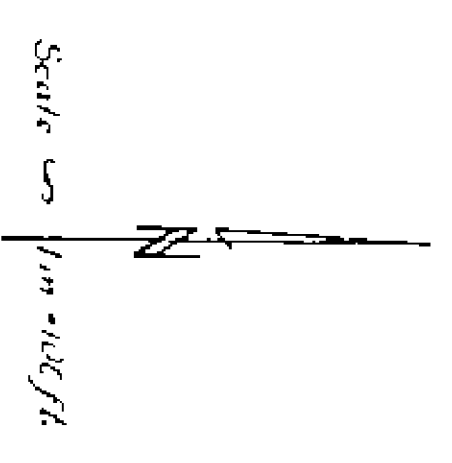
PORTION OF S1/2 OF N. 1/2 OF SECTION 34.
T. 2 S., R. 5 W.



See Sheet No. 146

(147)

1472



See Sheet No. 104

See Sheet No. 145

1472

ASSESSMENT NO. 394
DIAGRAM

EXHIBITING SIDEWALK IMPROVEMENT DISTRICT NO.4

IN THE CITY OF RIVERSIDE ON WHICH WORK HAS BEEN DONE UNDER THE OFFICIAL CONTRACT OF THE SUPERINTENDENT OF STREETS OF SAID CITY WITH CARL L. FREJD DATED JANUARY 14, 1955 FOR THE CONSTRUCTION OF CONCRETE SIDEWALKS IN PORTIONS OF RIVERSIDE AVENUE AND CENTRAL AVENUE AS IS MORE PARTICULARLY DESCRIBED IN SAID CONTRACT TO WHICH REFERENCE IS HEREBY MADE FOR FURTHER PARTICULARS; SAID DIAGRAM ALSO SHOWS THE RELATIVE LOCATION OF EACH LOT PORTION OF LOT PIECE OR PARCEL OF LAND ASSESSED FOR THE WORK DONE NUMBERED IN CIRCLES TO CORRESPOND TO THE RED INK NUMBERS IN THE ASSESSMENT HEREIN FIGURES NEXT TO PROPERTY LINES SHOW LENGTH OF SAID LINES IN FEET. THE MARK (?) MEANS FEET. PROPERTY LINES THAT DIFFER FROM THE RECORDED SUBDIVISIONS ARE SHOWN BY BROKEN LINES. THE DISTRICT BENEFITED IS BOUNDED BY A HEAVY DASHED LINE PROPERTY COVERED BY THIS ASSESSMENT IS SHOWN ON THE FOLLOWING RECORDED MAPS:

HEERS SUB. NO. 3 M.B. 24-38 REC. RIV. CO.
LAURA LANE PARK M.B. 25-49
PORTIONS OF SEC. 34 T 25 R S W S.B.B.A.M.

HEREIN THE LEGEND OF THE DIFFERENT KINDS OF WORK PERFORMED IS SHOWN AS FOLLOWS:

CONCRETE SIDEWALKS SHOWN THUS 

CITY ENGINEER OF THE CITY OF RIVERSIDE
THE FOLLOWING IS A STATEMENT OF AMOUNTS OF DIFFERENT KINDS OF WORK DONE BY CARL L. FREJD UNDER CONTRACT DATED JANUARY 14, 1955 PURSUANT TO RESOLUTION OF INTENTION NO. 6391 ADOPTED BY THE CITY COUNCIL OF THE CITY OF RIVERSIDE ON THE 13TH DAY OF OCTOBER, 1954

8641.56 SQUARE FEET CONCRETE SIDEWALK

AT SAID CITY OF RIVERSIDE THIS 27 DAY OF APRIL 1955

CITY ENGINEER
OF THE CITY OF RIVERSIDE

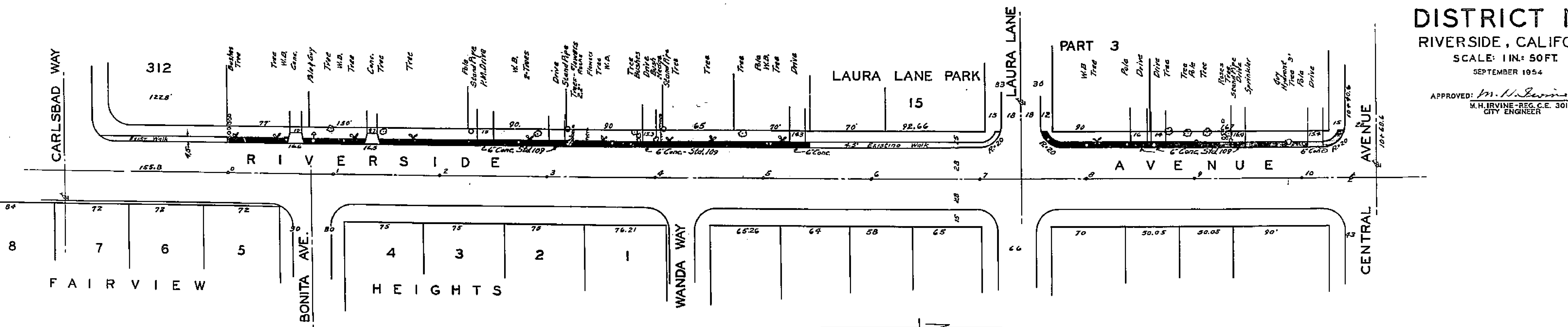
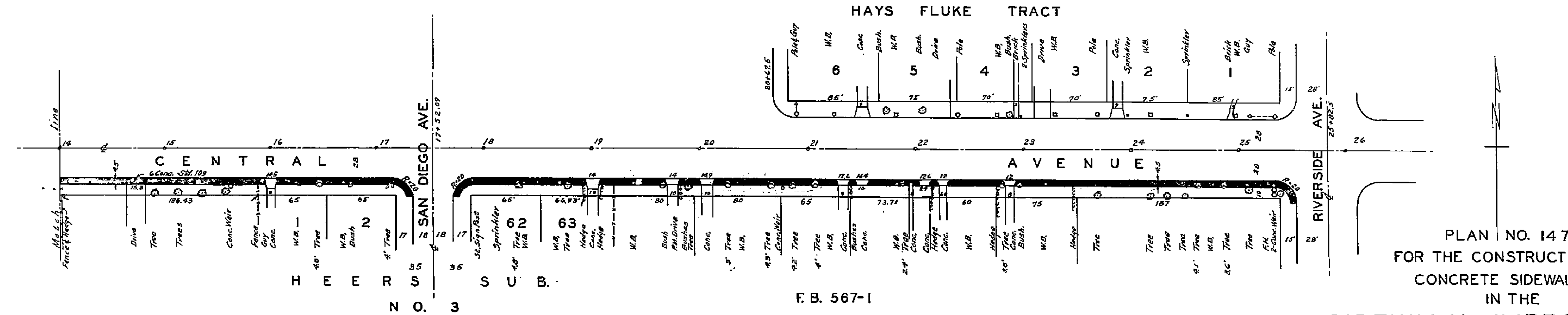
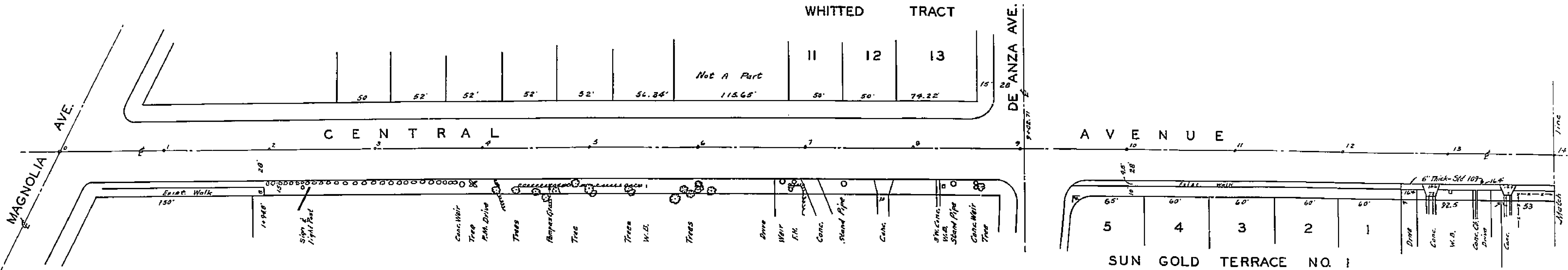
I HEREBY CERTIFY THAT THE ABOVE WORK WAS DONE IN ACCORDANCE WITH LINES AND GRADES FURNISHED BY ME AND THAT THE DIAGRAM OF THE ASSESSMENT DISTRICT FOR THE SAME IS CORRECT.

CITY ENGINEER
OF THE CITY OF RIVERSIDE

RECORDED AT 8:30 O'CLOCK A.M.
THIS 27 DAY OF APRIL 1955

SUPERINTENDENT OF STREETS
OF THE CITY OF RIVERSIDE

1472



PLAN NO. 1472.
 FOR THE CONSTRUCTION OF
 CONCRETE SIDEWALKS
 IN THE
SIDEWALK IMPROVEMENT
DISTRICT NO. 4
 RIVERSIDE, CALIFORNIA
 SCALE: 1 IN. = 50 FT.
 SEPTEMBER 1954

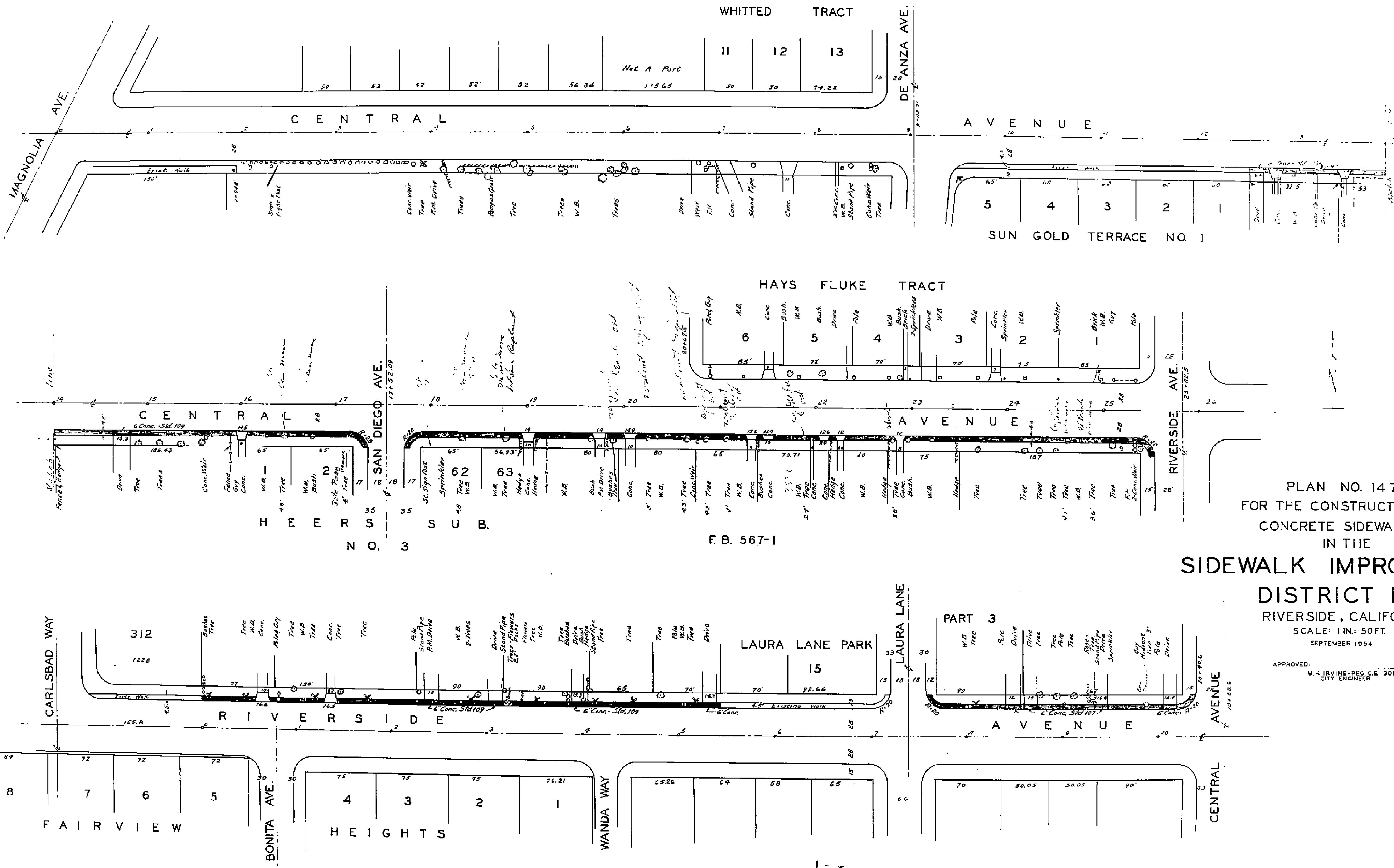
APPROVED: *M. H. Irvine*
 M. H. IRVINE - REG. C.E. 3011
 CITY ENGINEER

F. B. 567-19

NEW SIDEWALK SHOWN THUS

NOTE: POUR SIDEWALK AROUND POLES, NOTCH FOR TREES,
 REMOVE BUSHES IN WAY

1472



F. B. 567-19

NEW SIDEWALK SHOWN THUS

PLAN NO. 1472
 FOR THE CONSTRUCTION OF
 CONCRETE SIDEWALKS
 IN THE
SIDEWALK IMPROVEMENT
DISTRICT NO. 4
 RIVERSIDE, CALIFORNIA
 SCALE: 1 IN. = 50 FT.
 SEPTEMBER 1954

APPROVED:
 M. H. IRVINE - REG. C.E. 3011
 CITY ENGINEER

NOTE: FOUR SIDEWALK AROUND POLES, NOTCH FOR TREES.
 REMOVE BUSHES IN WAY

1472