

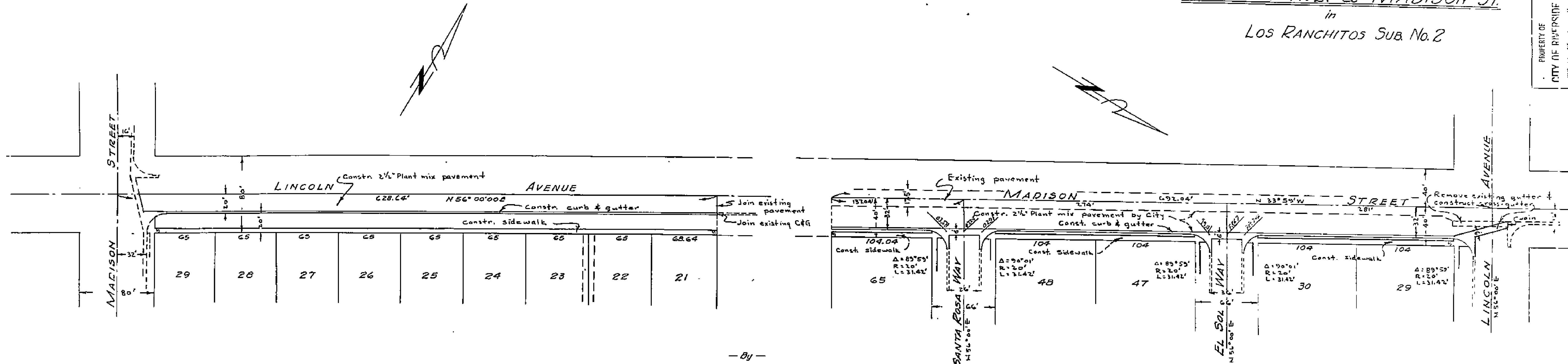
PROPERTY OF
CITY OF RIVERSIDE
CITY ENGINEERING DEPT.

SHEET 2 of 2 SHEETS

STREET PLANS & PROFILES
of
LINCOLN AVE. & MADISON ST.
in
LOS RANCHITOS SUB No. 2

PROPERTY OF
CITY OF RIVERSIDE
CITY ENGINEERING DEPT.

PLAN
H.L.L.N.

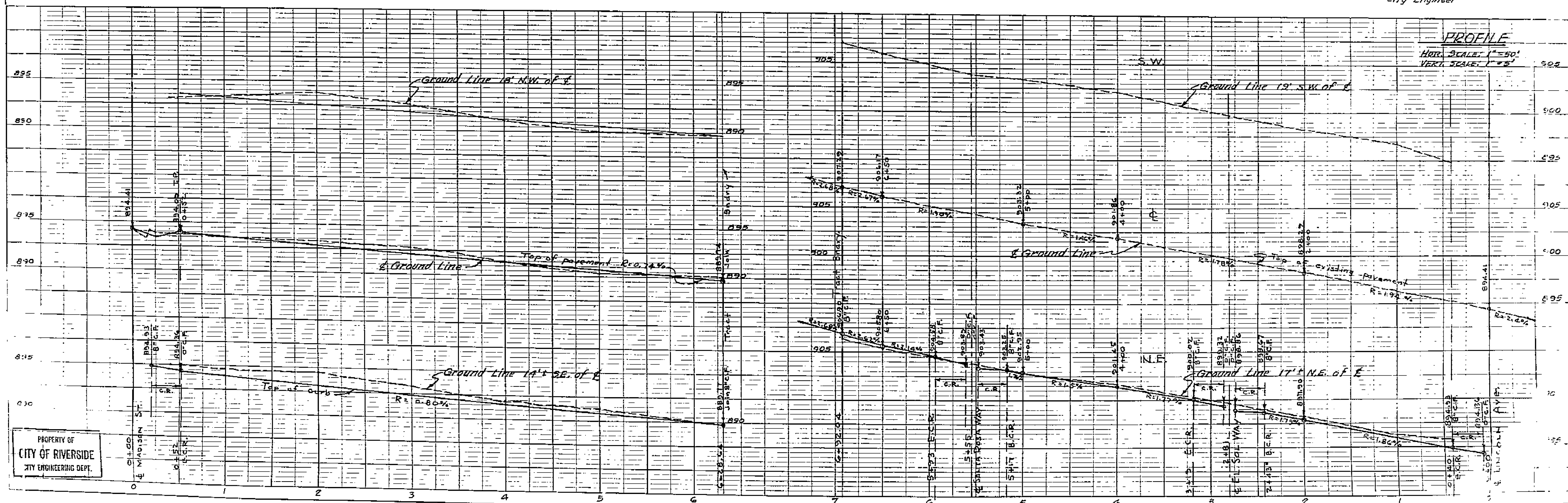


- By -

ALBERT A. WEBB ASSOCIATES
CIVIL ENGINEERS
RIVERSIDE, CALIFORNIA
JULY 1954 SCALE 1"=50'

Approved Aug 1954
M. H. Javina
City Engineer

PROFILE
H.L.L.N.



PROPERTY OF
CITY OF RIVERSIDE
CITY ENGINEERING DEPT.

PLATE I - PLAN PROFILE D.P.S. & P.C. STANDARD
KUEPER & ESSER CO. NEW YORK
C.O.C. NO. 245-1

1474
PROPERTY OF
CITY OF RIVERSIDE
CITY ENGINEERING DEPT.

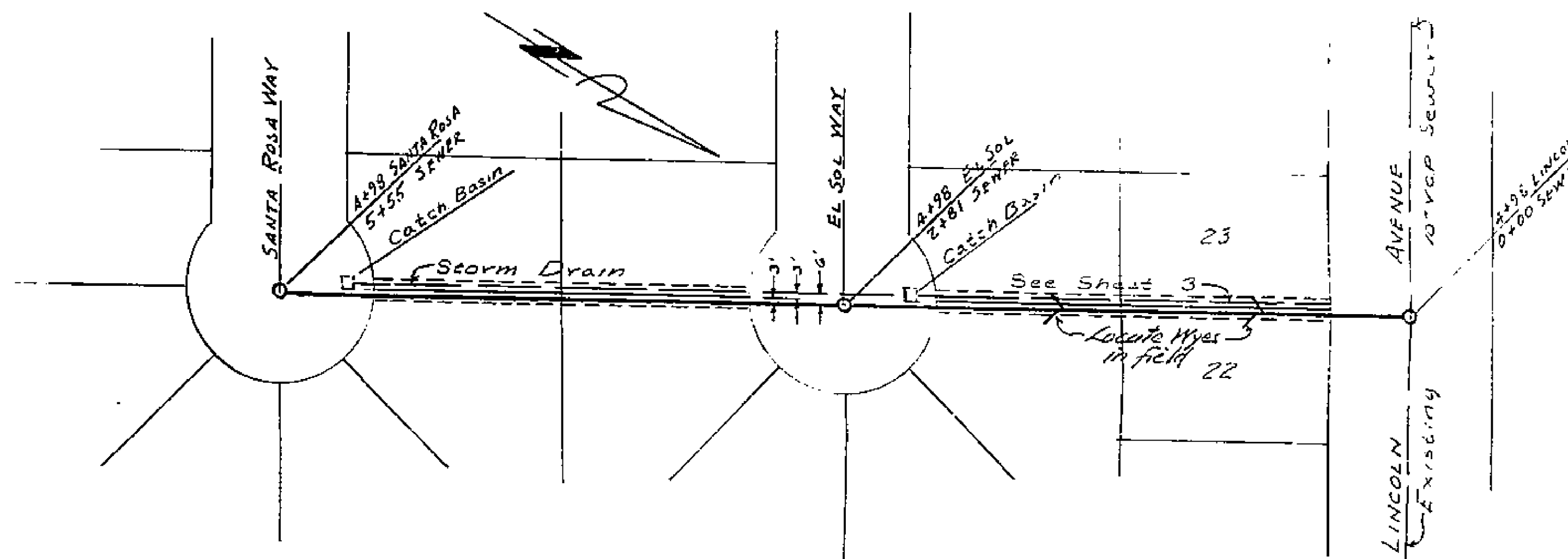
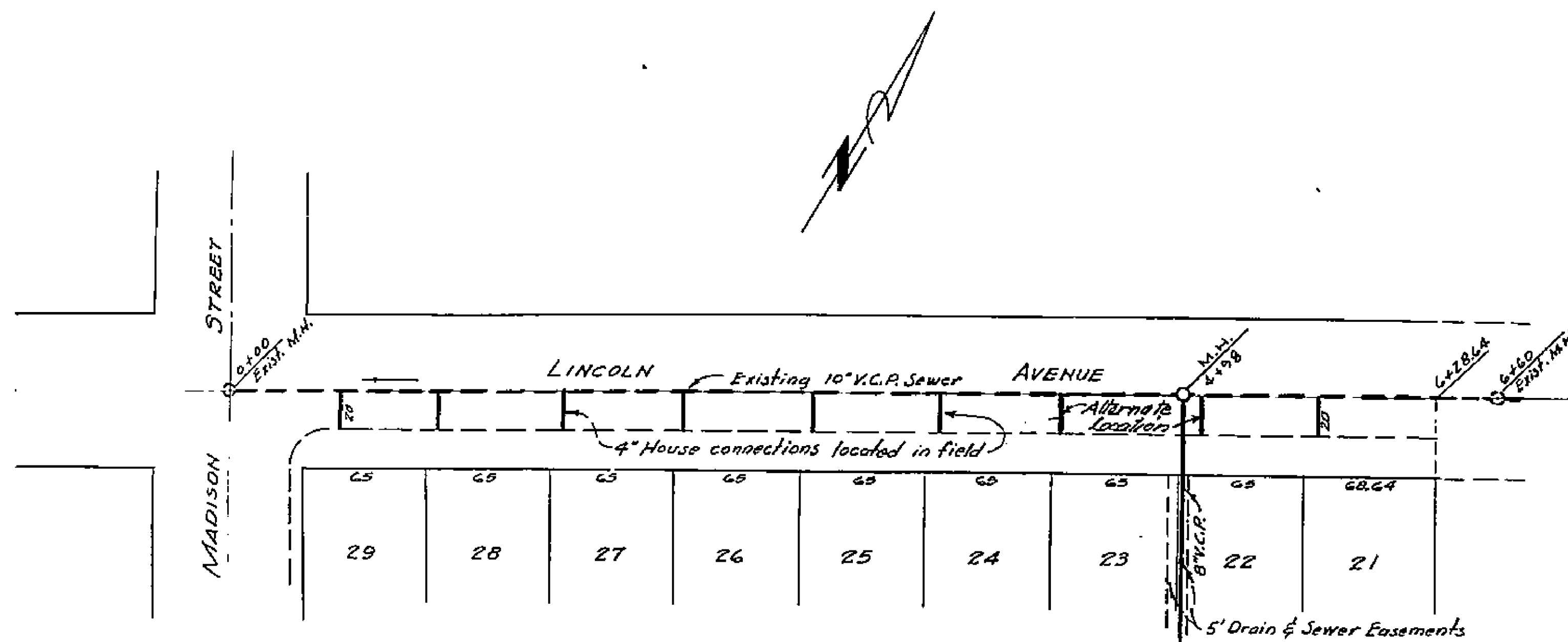
54-127
P.S. 289

PROPERTY OF
CITY OF RIVERSIDE
CITY ENGINEERING DEPT.

SHEET 2 of 3 SHEETS

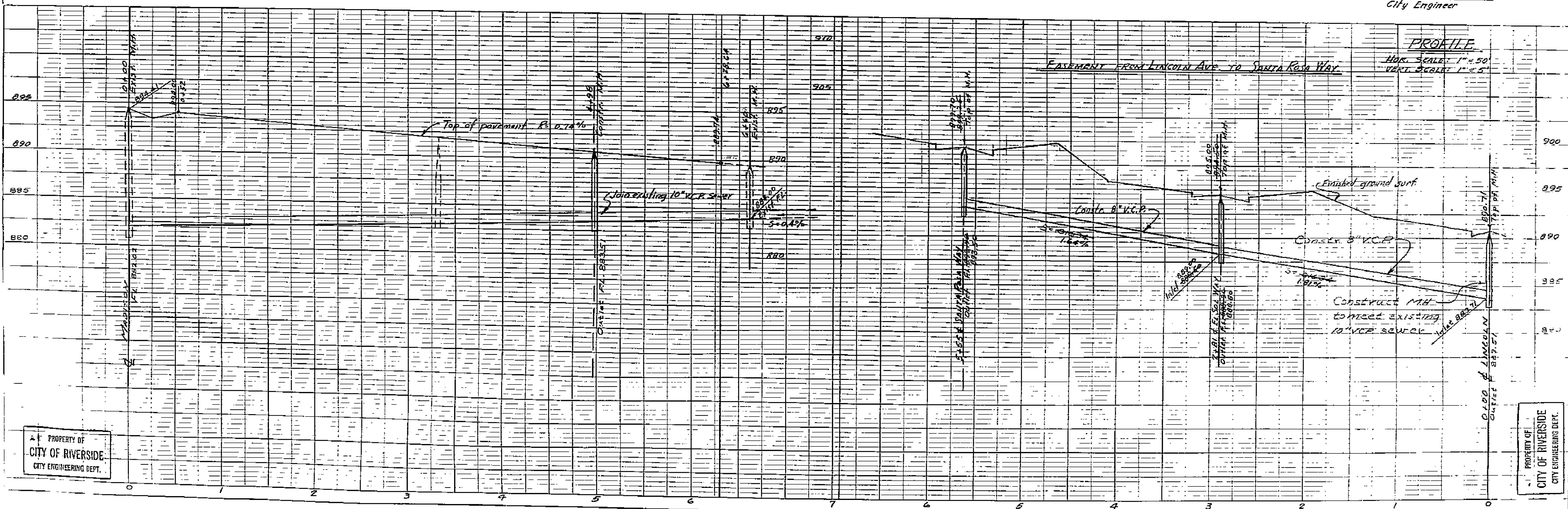
SEWER PLANS & PROFILES
of
LINCOLN AVE. & EASEMENT
in
LOS RANCHITOS SUB. NO. 2

PROPERTY OF
CITY OF RIVERSIDE
CITY ENGINEERING DEPT.



—By—
ALBERT A. WEBB ASSOCIATES
CIVIL ENGINEERS
RIVERSIDE, CALIFORNIA
JULY 1954 SCALE 1"=50'

Revised Grades Approved Aug. 27, 1954
M. H. Irvine
City Engineer
Approved August 5, 1954
M. H. Irvine
City Engineer



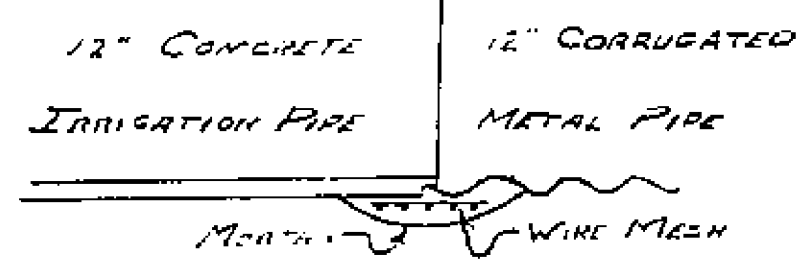
PROPERTY OF
CITY OF RIVERSIDE
CITY ENGINEERING DEPT.

PROPERTY OF
CITY OF RIVERSIDE
CITY ENGINEERING DEPT.

1474

DETAIL "C"

Scale 1"=1'

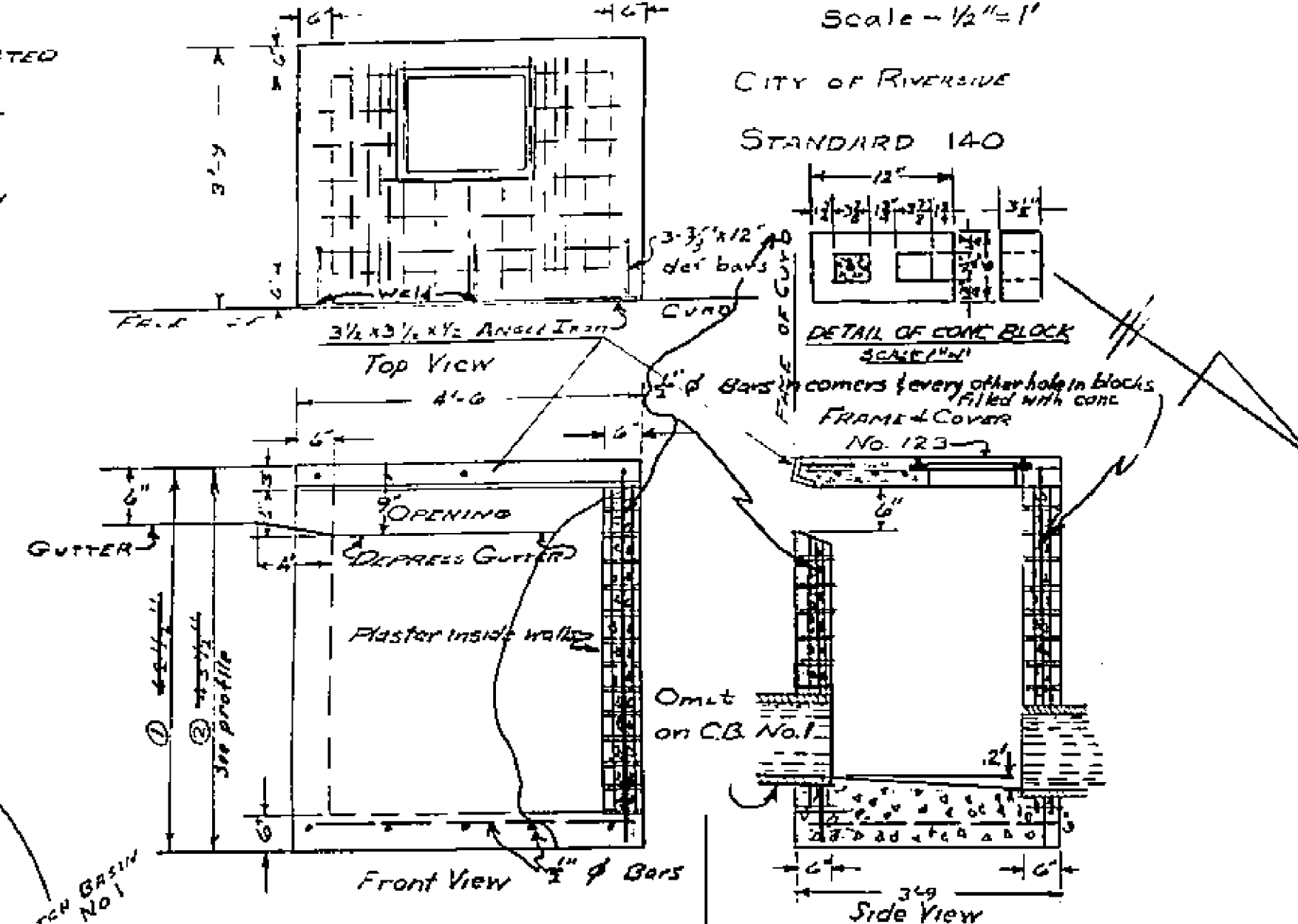


DETAIL "A"

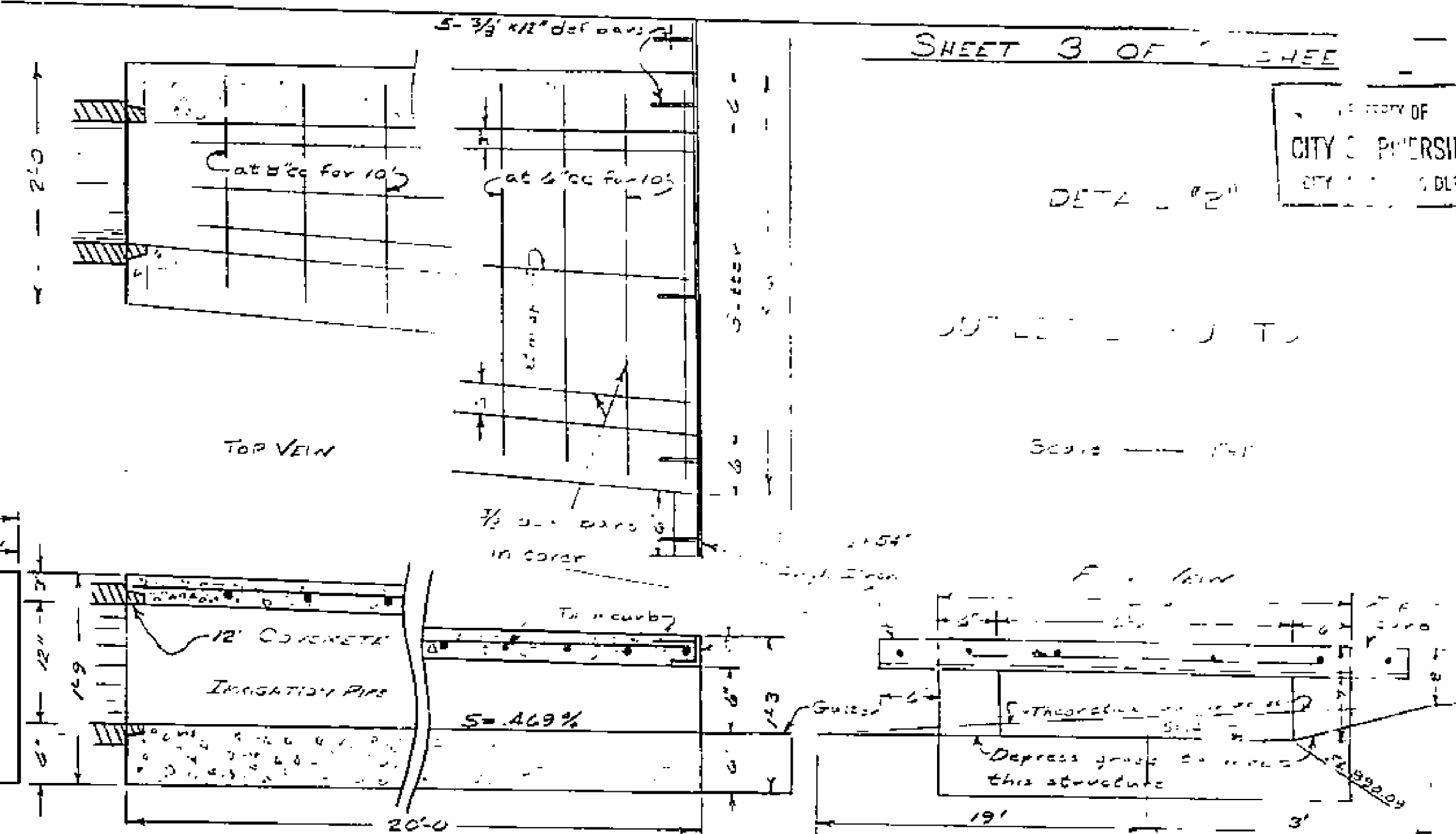
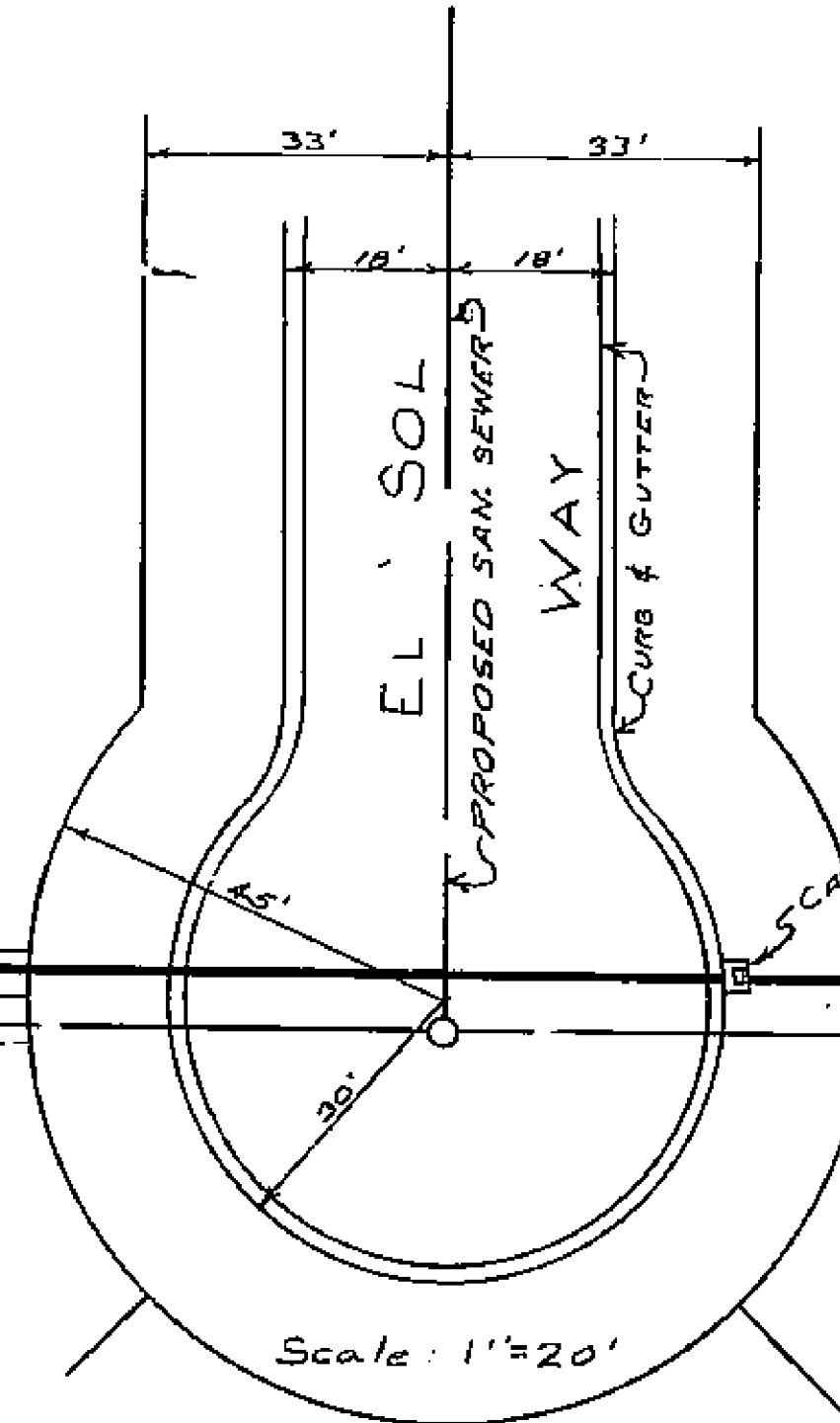
STORM WATER CATCH BASIN

Scale 1/2"=1'

CITY OF RIVERSIDE
STANDARD 140



PLAN AND PROFILE
OF
STORM SEWER
LOS RANCHITOS
SUBDIVISION No. 2



SHEET 3 OF 4 SHEETS

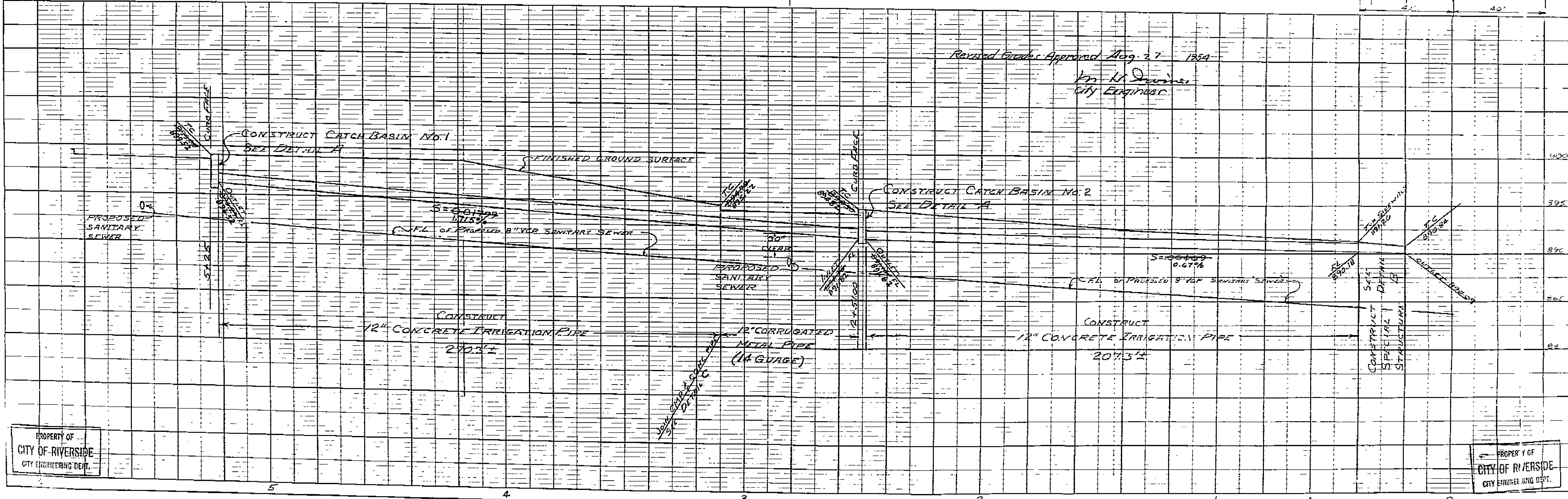
PROPERTY OF
CITY OF RIVERSIDE
CITY ENGINEERING DEPT.

ALBERT A WEISS ASSOC.
RIVERSIDE CALIF
JULY 1954

APPROVED August 5, 1954
By M. H. Swine
CITY ENGINEER

Revised Grades Approved Aug. 27, 1954

M. H. Swine
City Engineer



PROPERTY OF
CITY OF RIVERSIDE
CITY ENGINEERING DEPT.

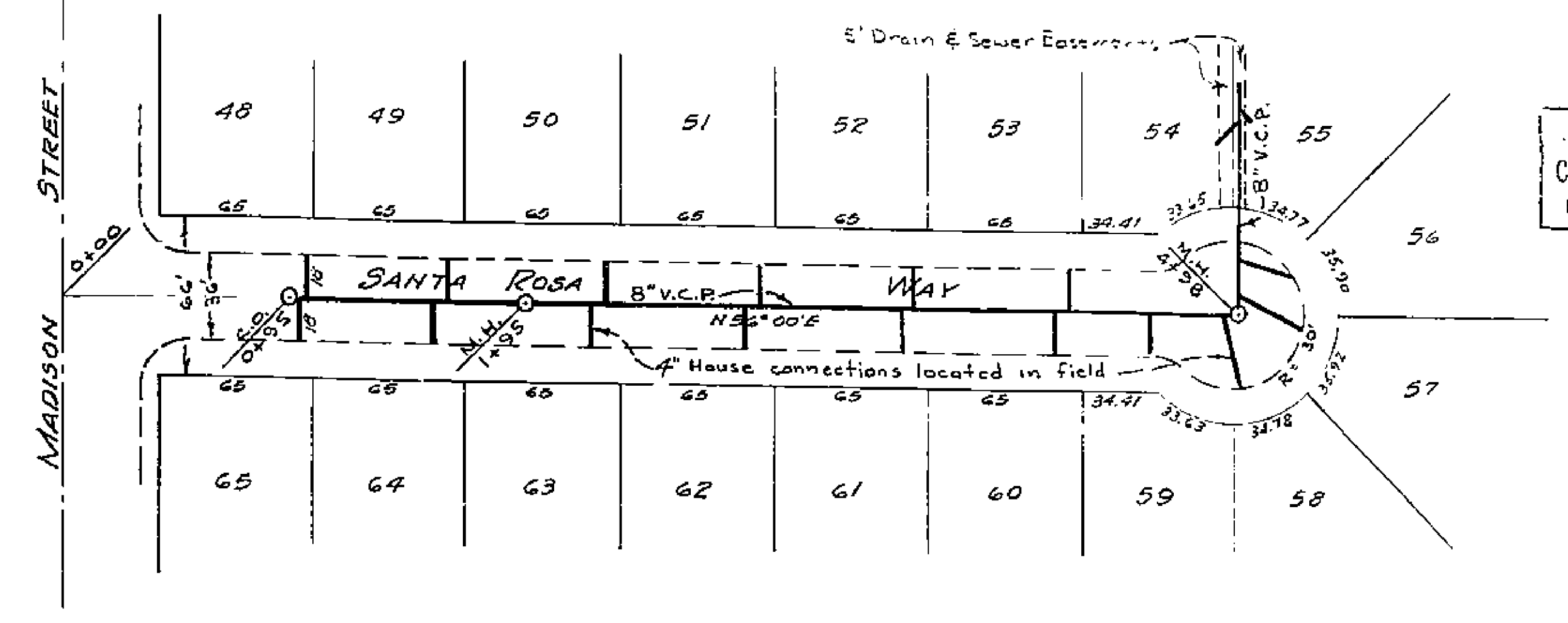
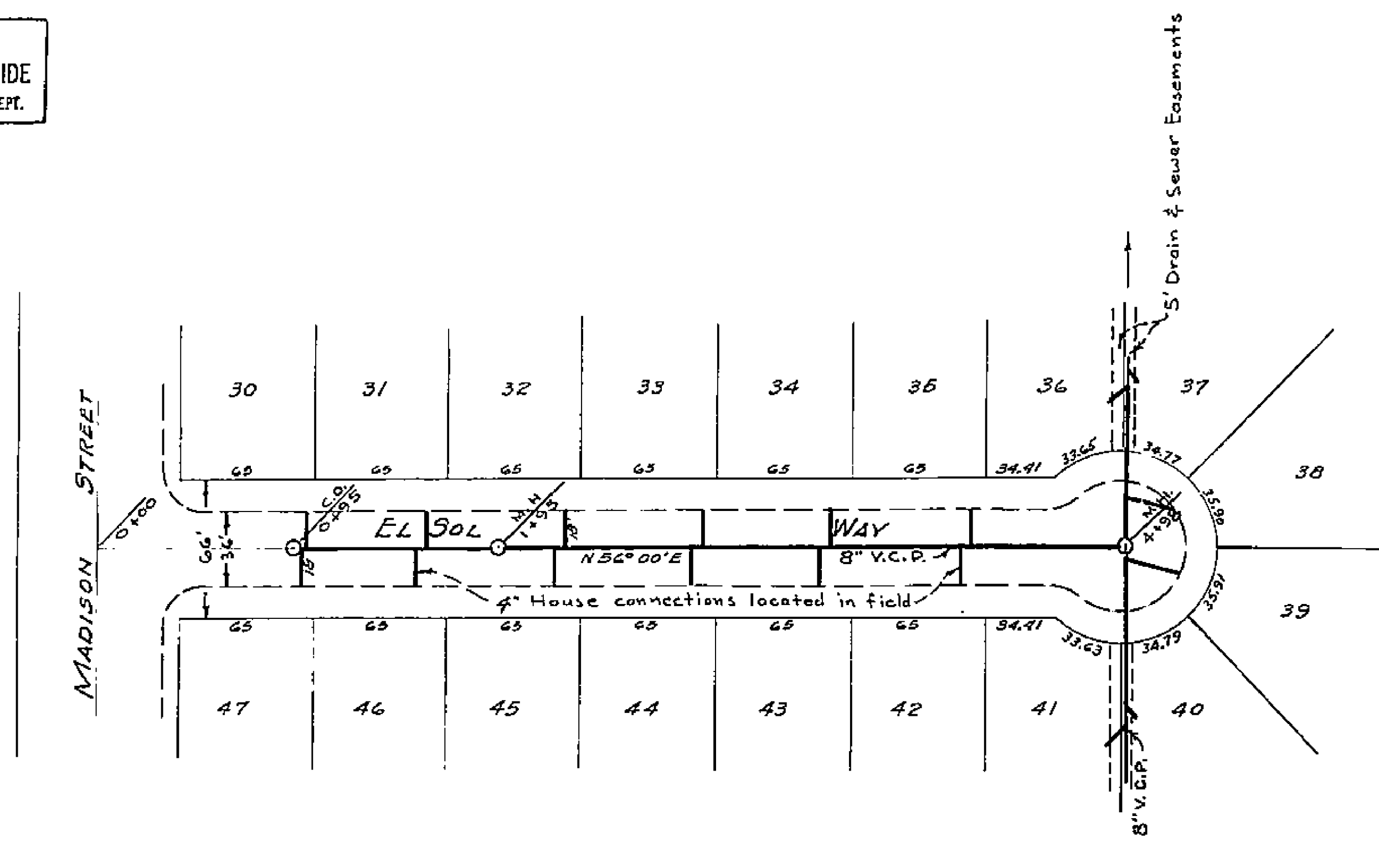
PROPERTY OF
CITY OF RIVERSIDE
CITY ENGINEERING DEPT.

1474

NO 52-27
FB 231

PROPERTY OF
CITY OF RIVERSIDE
CITY ENGINEERING DEPT.

SEWER PLANS & PROFILES
of
EL SOL WAY & SANTA ROSA WAY
in
LOS RANCHITOS SUB. No. 2

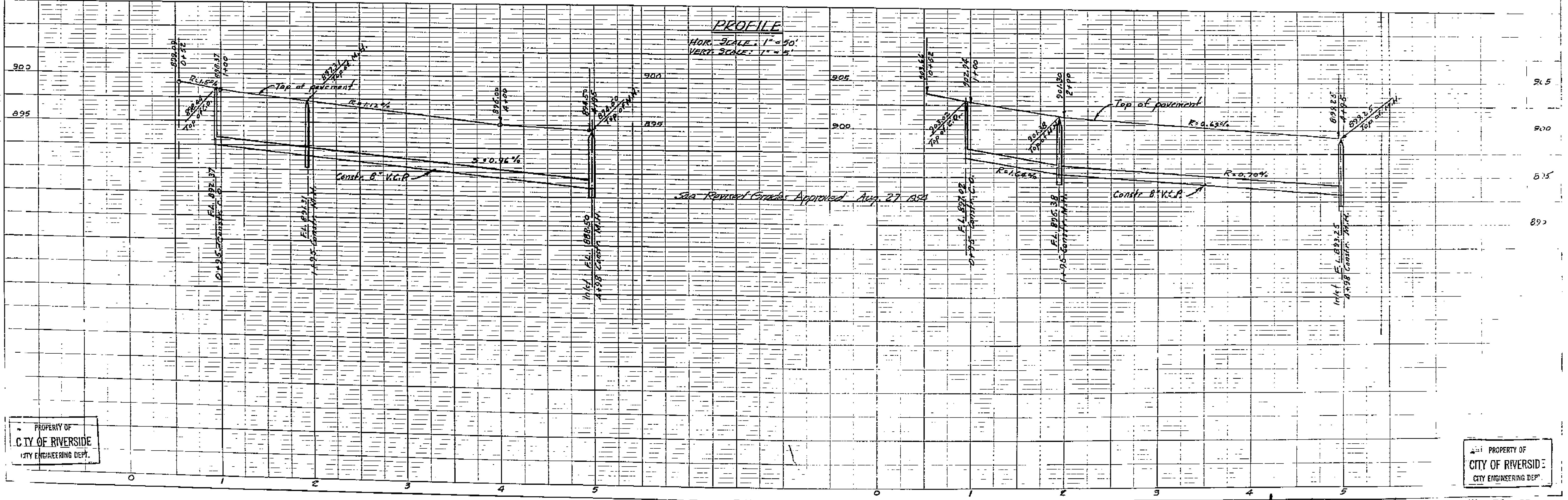


PROPERTY OF
CITY OF RIVERSIDE
CITY ENGINEERING DEPT.

— By —

ALBERT A. WEBB ASSOCIATES
CIVIL ENGINEERS
RIVERSIDE, CALIFORNIA
JULY 1954 SCALE 1"=50'

Approved August 5, 1954
M. H. Durbin
City Engineer

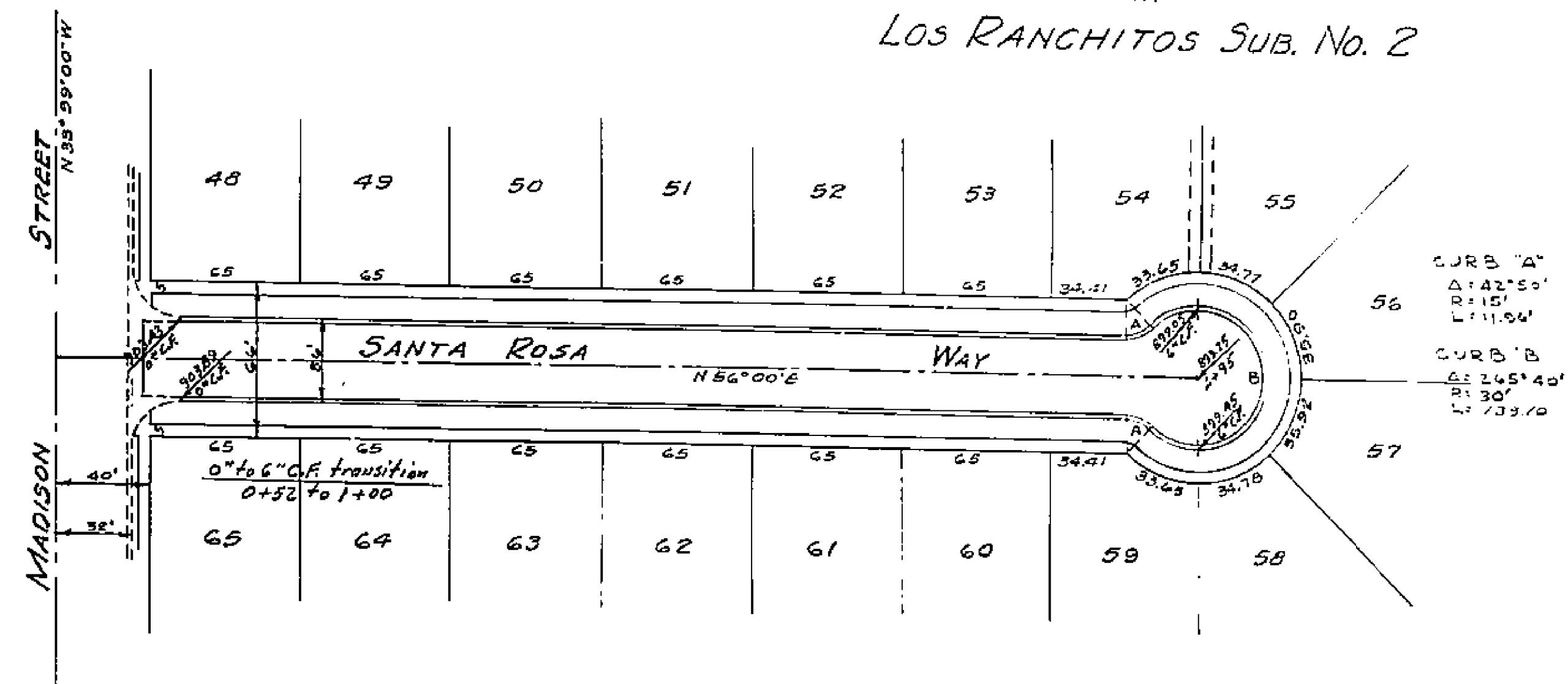
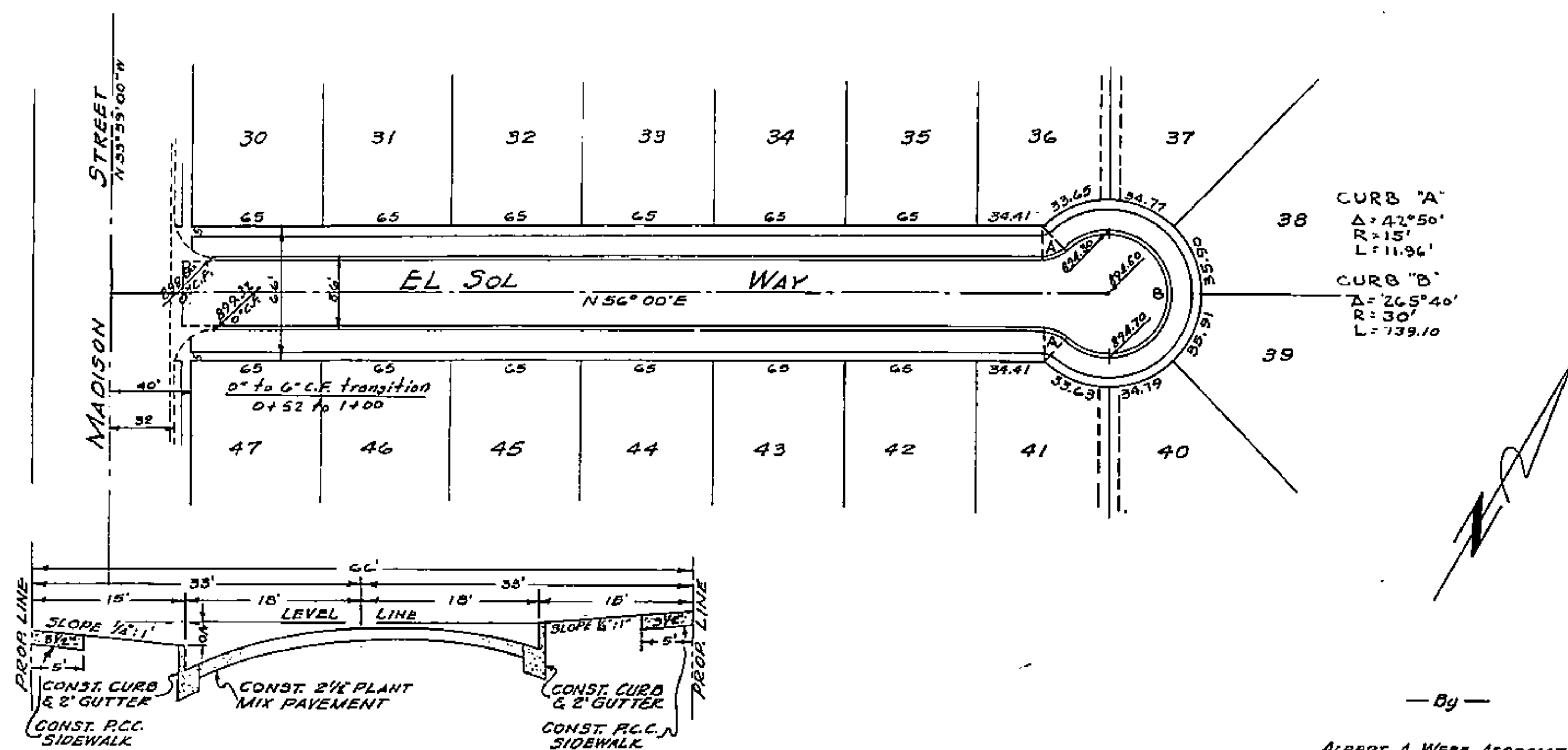


PROPERTY OF
CITY OF RIVERSIDE
CITY ENGINEERING DEPT.

PROPERTY OF
CITY OF RIVERSIDE
CITY ENGINEERING DEPT.

1474

STREET PLANS & PROFILES
of
EL SOL WAY & SANTA ROSA WAY
in
Los RANCHITOS SUB. No. 2

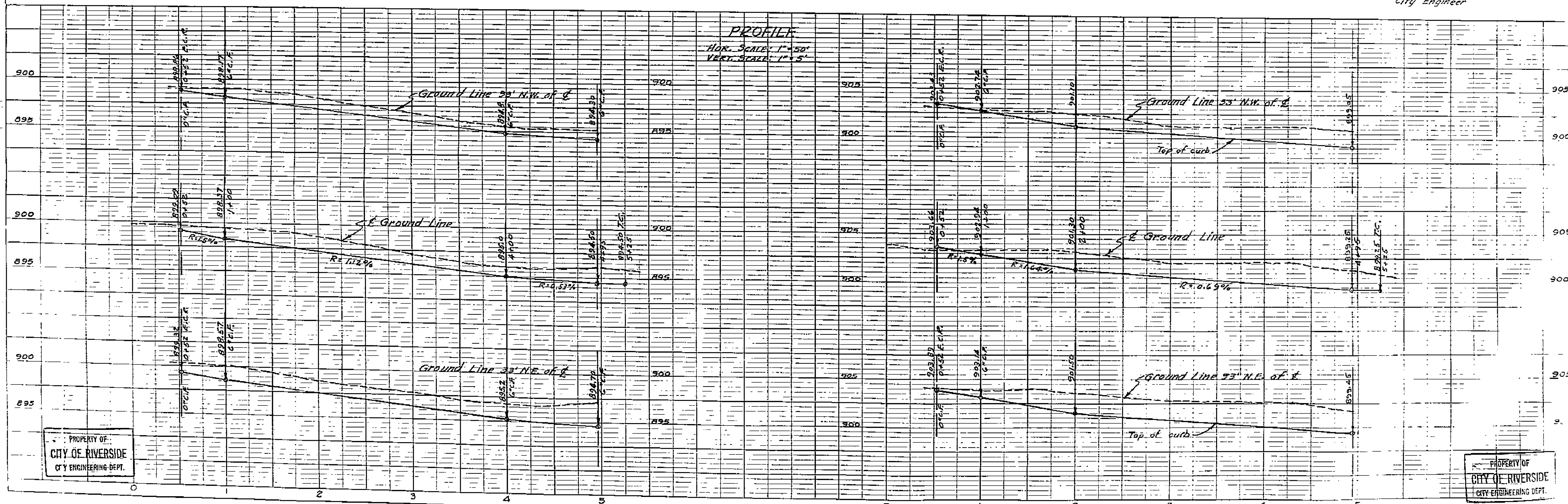


TYPICAL SECTION
EL SOL WAY & SANTA ROSA WAY

JULY 1954 ALBERT A. WEBB ASSOCIATES
CIVIL ENGINEERS RIVERSIDE, CALIFORNIA SCALE 1"=50'

See Revised Grades Approved Apr. 27, 1955

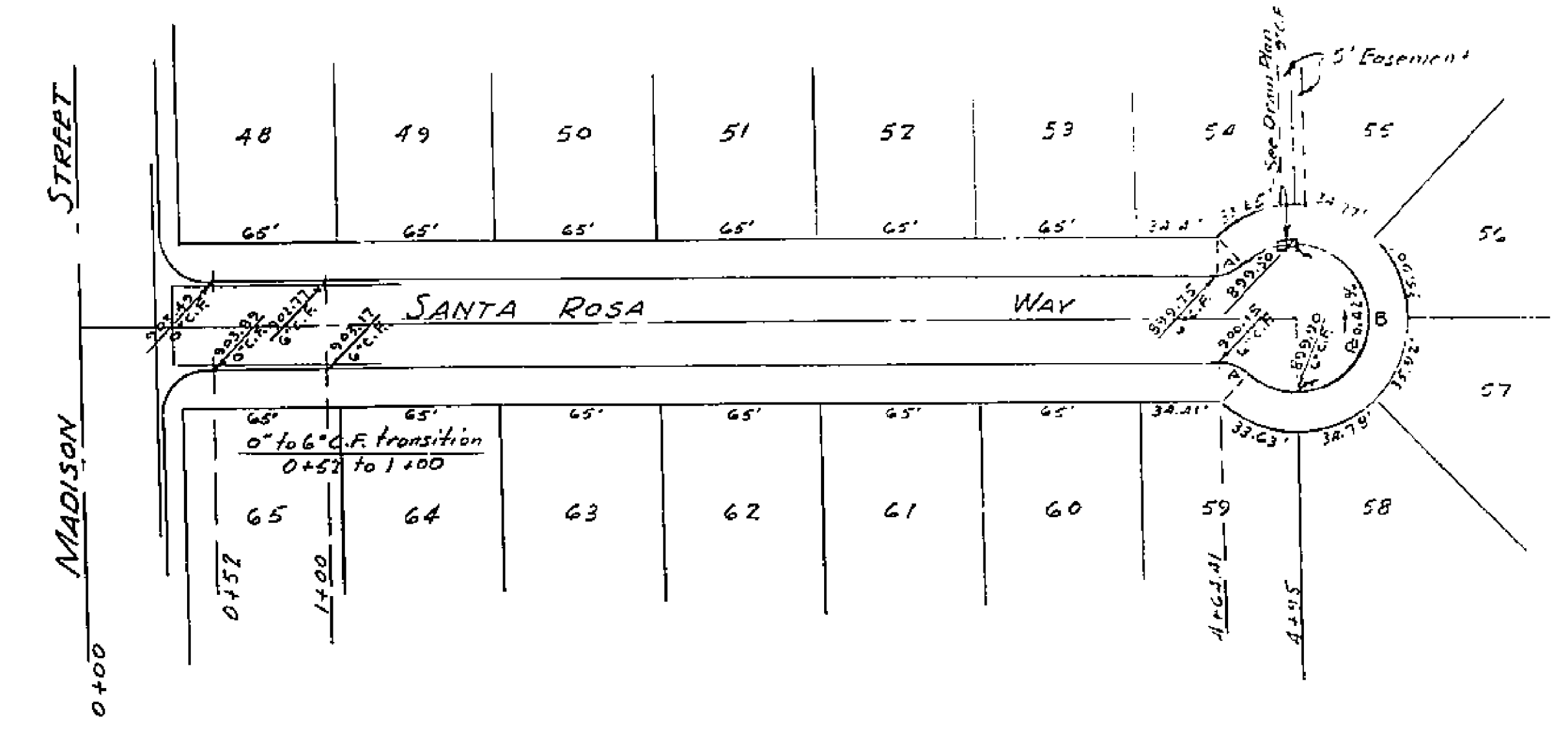
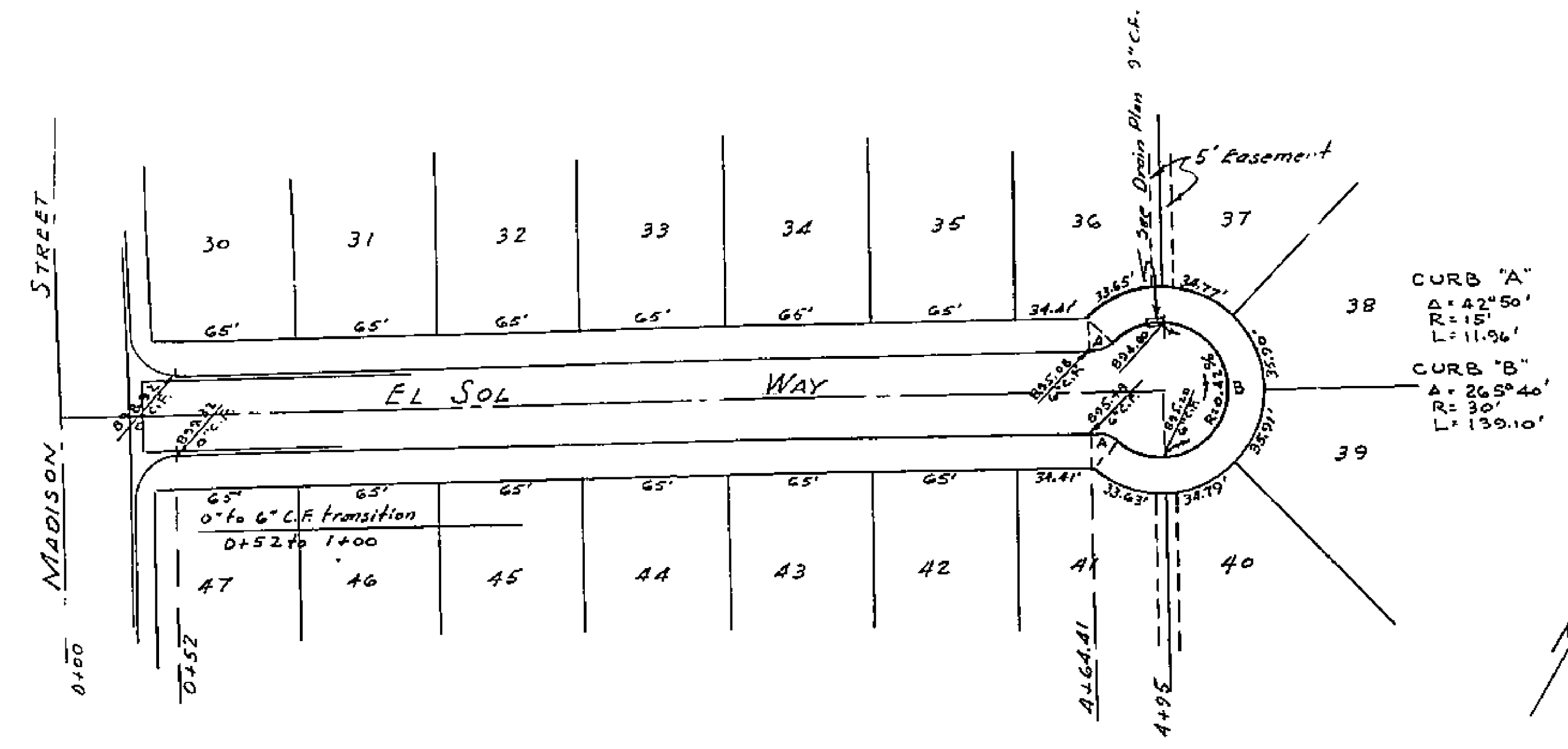
Approved August 5, 1954
M. H. Irvine
City Engineer



1474

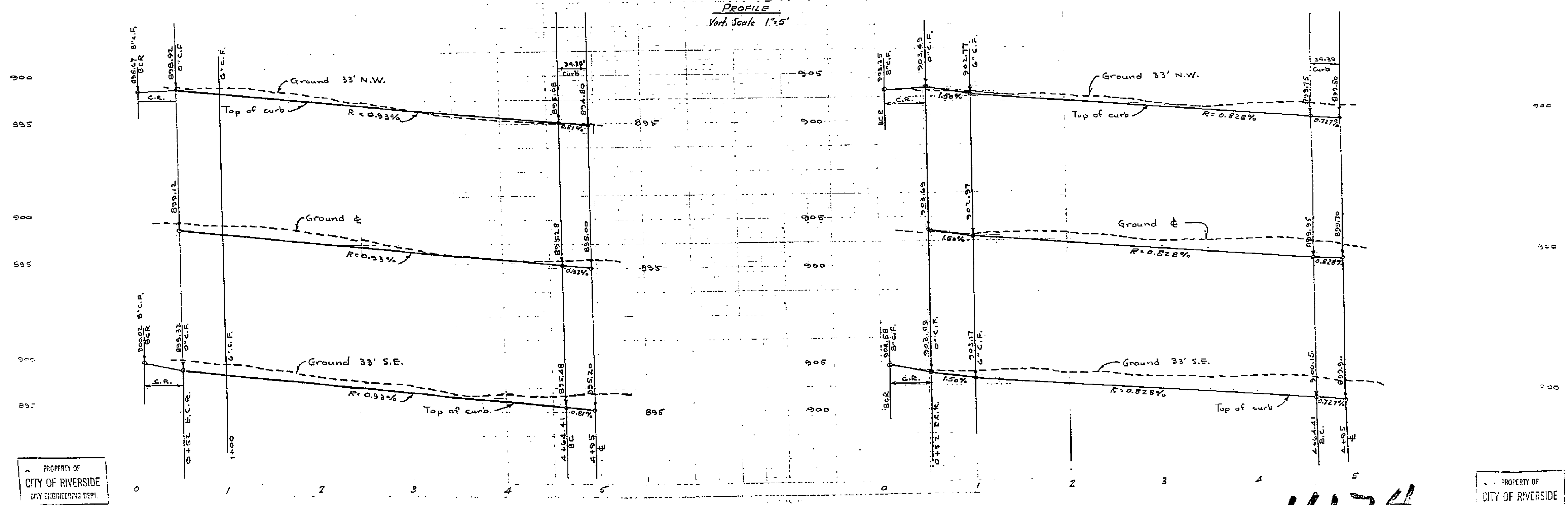
PROPERTY OF
CITY OF RIVERSIDE
CITY ENGINEERING DEPT.

REVISED
STREET PLANS AND PROFILES
EL SOL WAY AND SANTA ROSA WAY
LOS RANCHITOS SUB. NO 2



- By -
ALBERT A. WEBB ASSOCIATES
CIVIL ENGINEERS
RIVERSIDE, CALIFORNIA
AUG. 1954
SCALE 1" = 50'

GRADE REVISION
Approved AUG 27 1954
M. H. Irvine
City Engineer



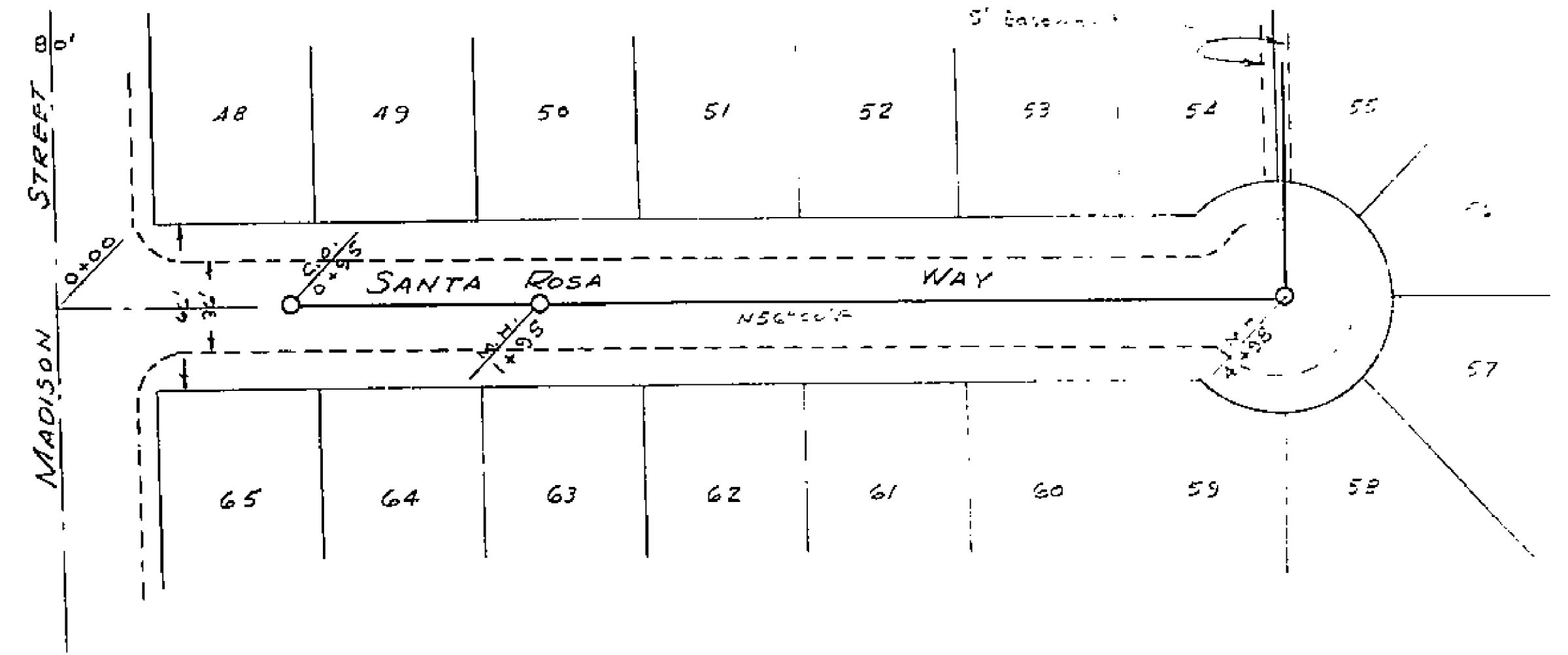
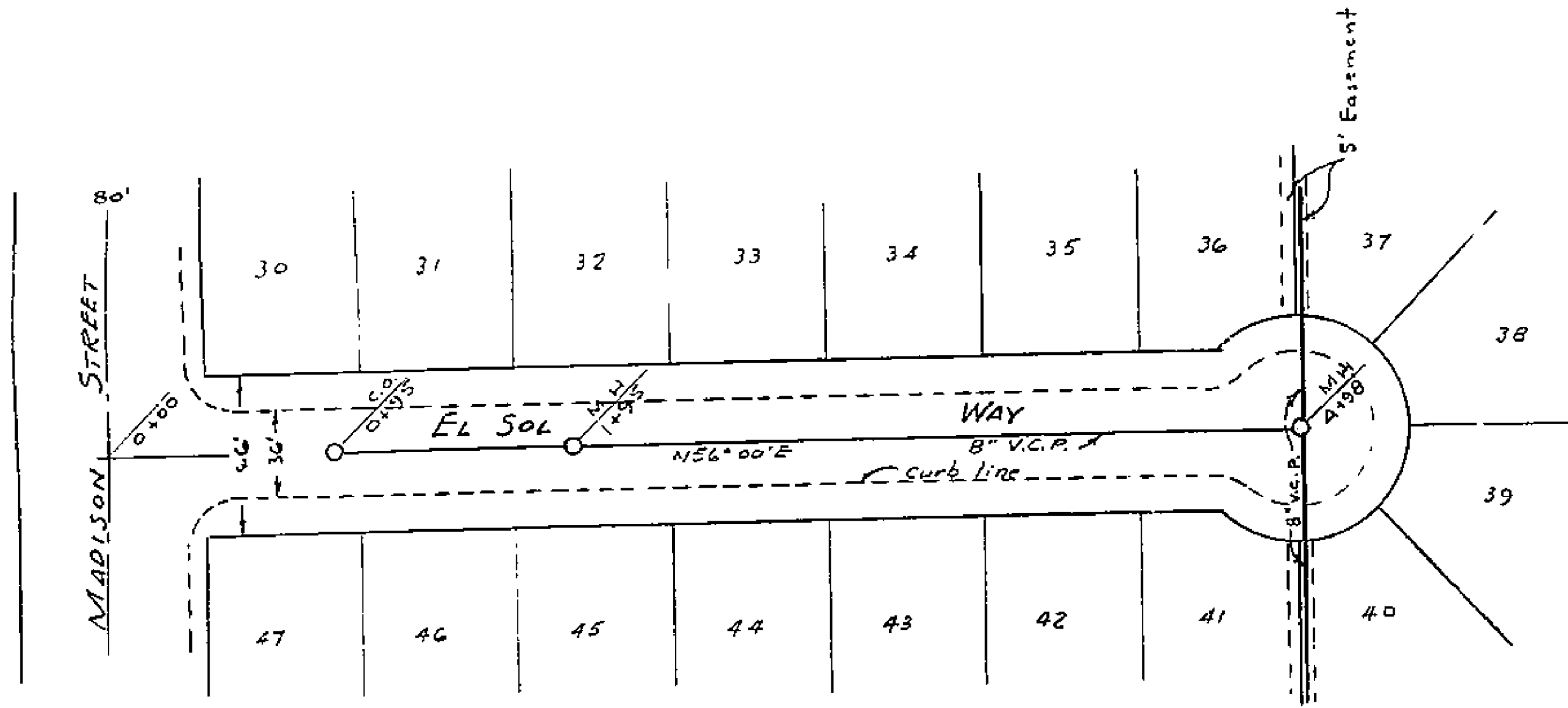
PROPERTY OF
CITY OF RIVERSIDE
CITY ENGINEERING DEPT.

PROPERTY OF
CITY OF RIVERSIDE
CITY ENGINEERING DEPT.

1474

PROPERTY OF
CITY OF RIVERSIDE
ENGINEERING DEPT.

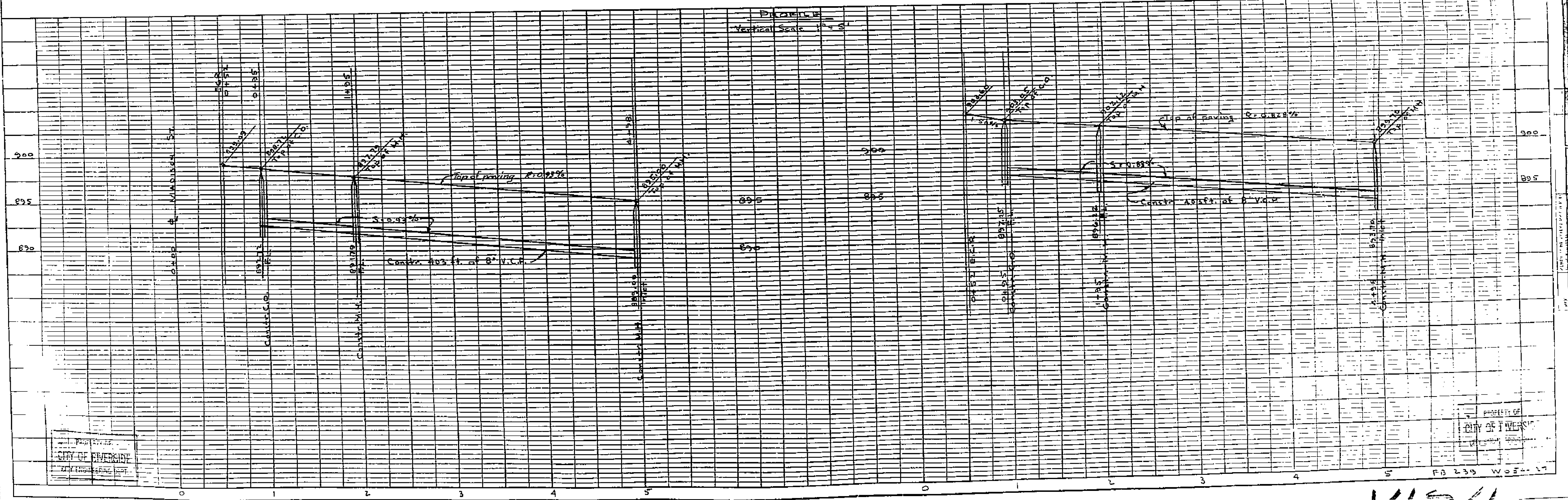
REVISED
SEWER PLAN AND PROFILE
EL SOL WAY & SANTA ROSA WAY
IN
LOS RANCHITOS SUB. NO 2



SCALE 1" = 50'

BY
ALBERT A. WEBB ASSOCIATES
CIVIL ENGINEERS RIVERSIDE, CALIFORNIA

SEE ALSO PLANS APPROVED AUG. 5, 1954
REVISED GRADES APPROVED Aug. 27 1954
M.H. Quinn
CITY ENGINEER



PROPERTY OF
CITY OF RIVERSIDE
ENGINEERING DEPT.

PROPERTY OF
CITY OF RIVERSIDE
ENGINEERING DEPT.

PLATE 1 - PLAN - PROFILE
DRAWING NUMBER 10-2-5-10
1-1954

1474