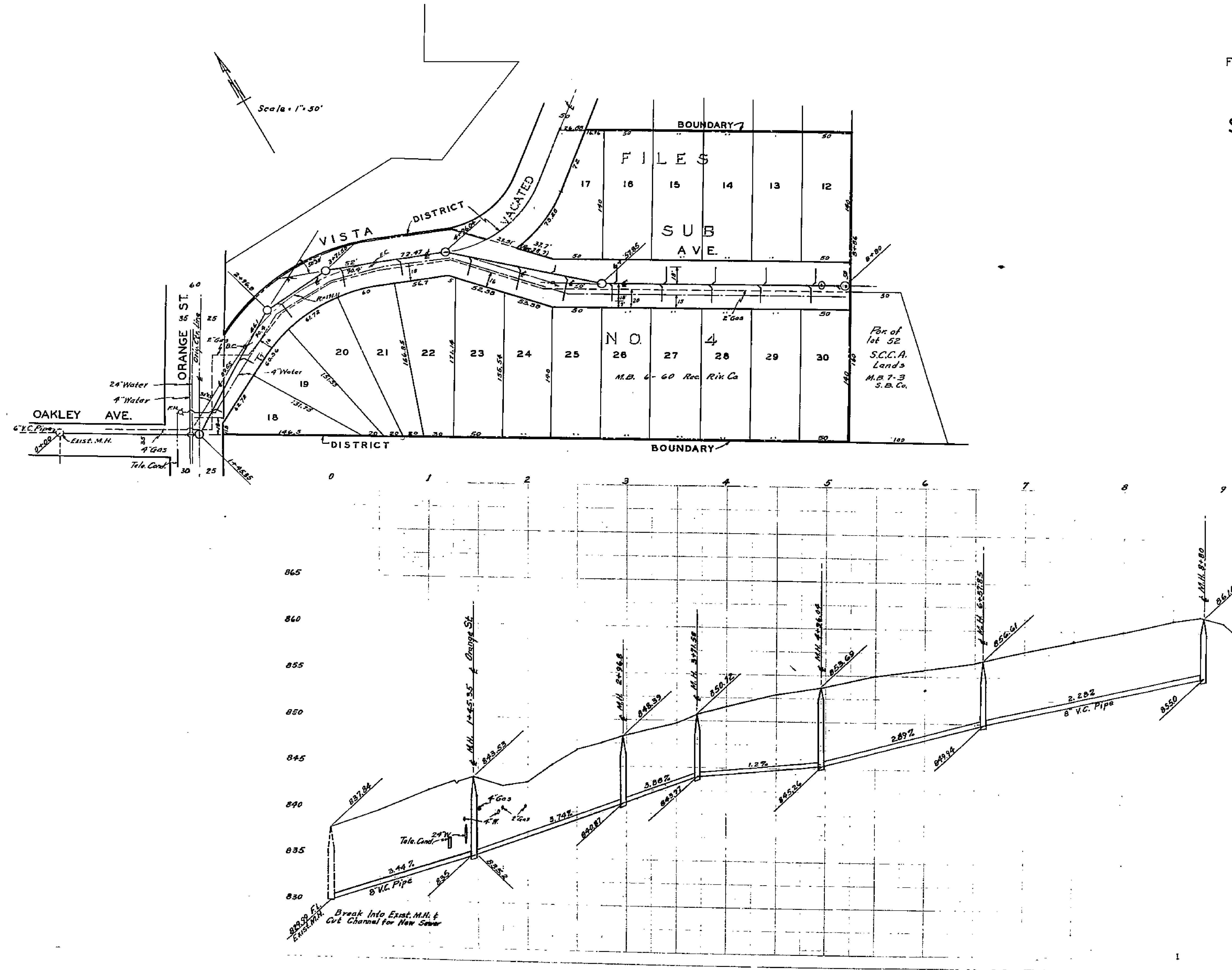


PLAN NO. 1477
 FOR THE CONSTRUCTION OF SANITARY SEWERS
 IN THE
**VISTA AVENUE
 SANITARY SEWER DISTRICT**

RIVERSIDE, CALIFORNIA
 SCALE - 1 IN. = 50 FT.

APPROVED: *M.H. Irvine*
 M.H. IRVINE-REG. C.E. NO. 3011



1477