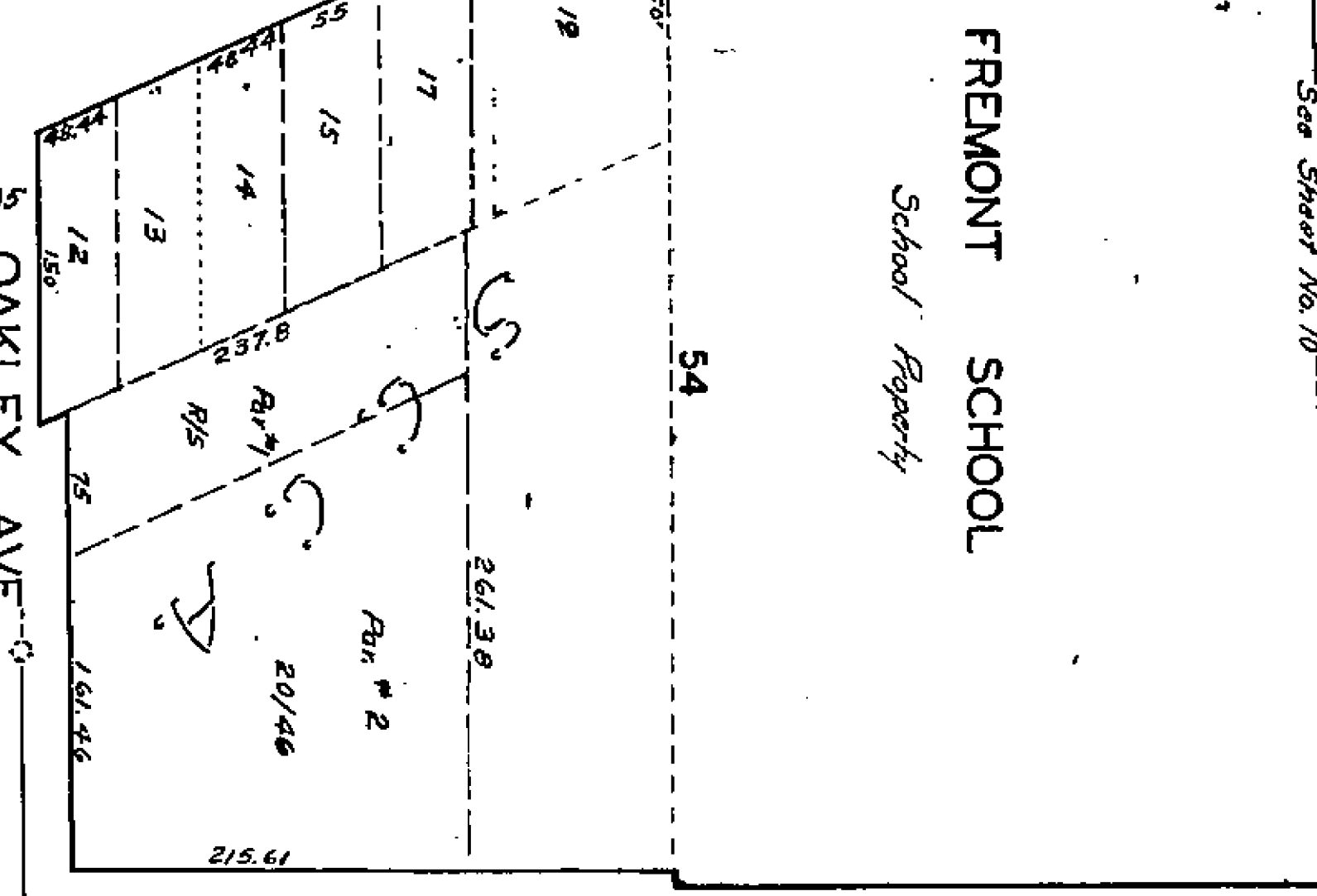
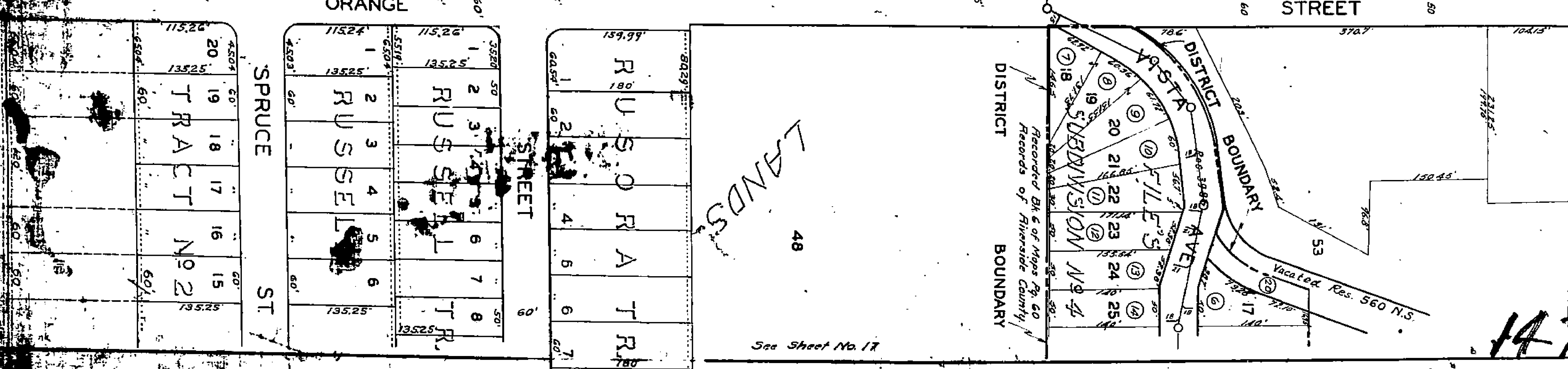
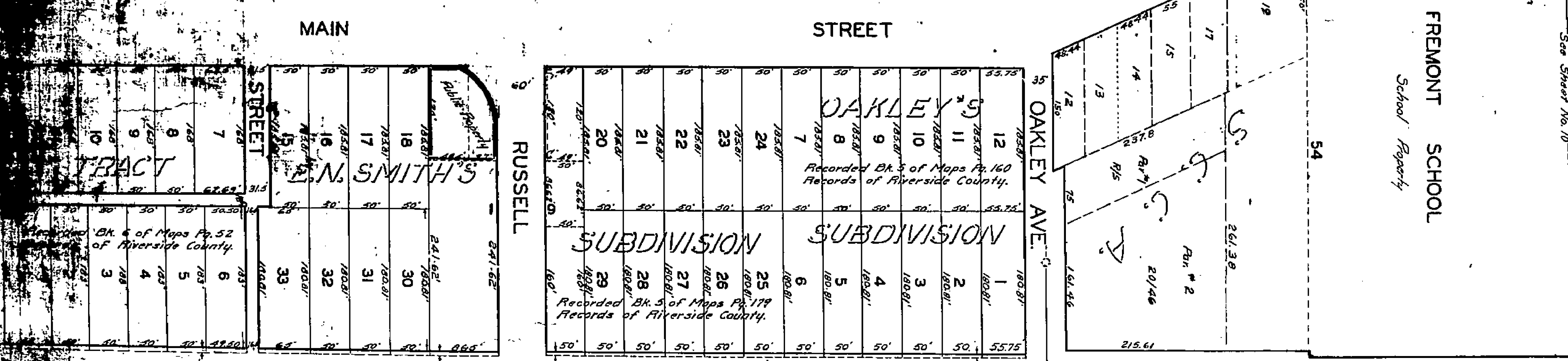
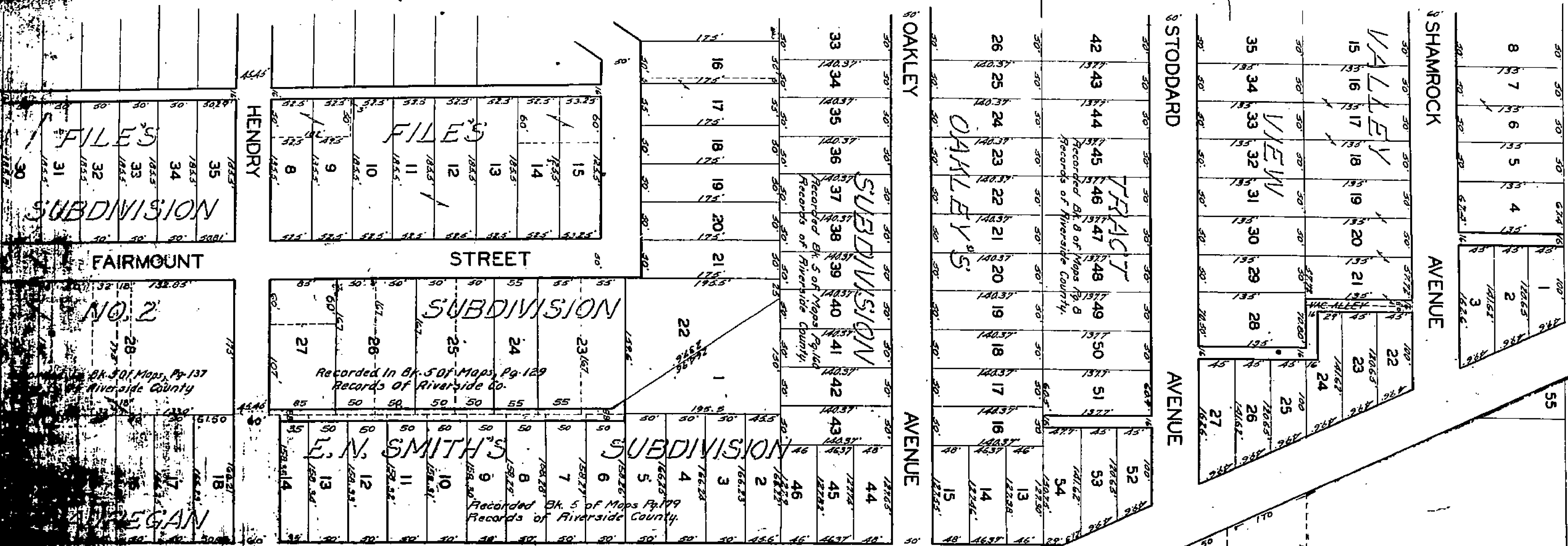


See Sheet No. 19

SCALE 1"=100'



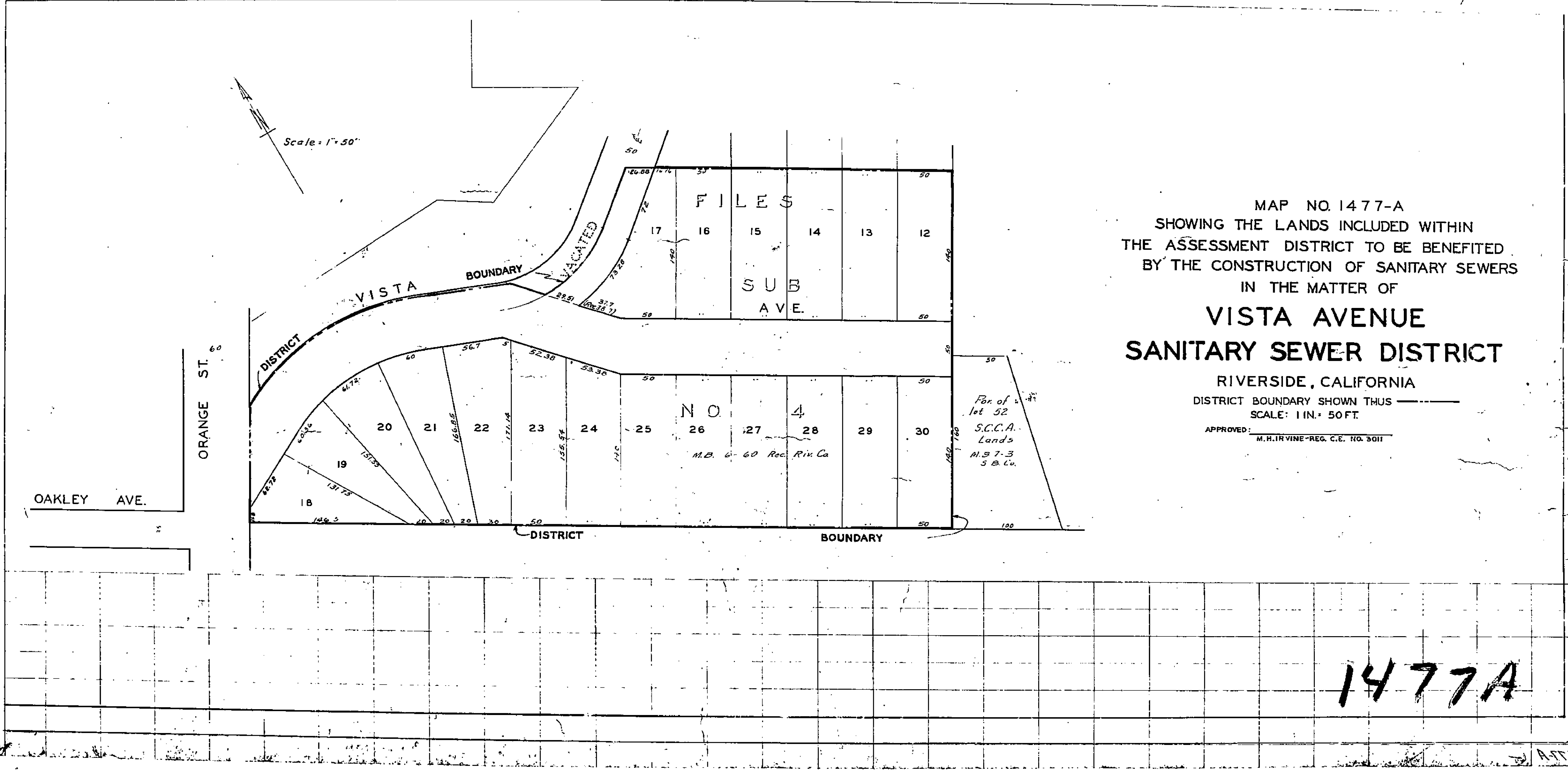
LANDS 48

See Sheet No. 17

1A77A

A-1581

1111



MAP NO. 1477-A  
 SHOWING THE LANDS INCLUDED WITHIN  
 THE ASSESSMENT DISTRICT TO BE BENEFITED  
 BY THE CONSTRUCTION OF SANITARY SEWERS  
 IN THE MATTER OF  
**VISTA AVENUE  
 SANITARY SEWER DISTRICT**

RIVERSIDE, CALIFORNIA  
 DISTRICT BOUNDARY SHOWN THUS   
 SCALE: 1 IN. = 50 FT.  
 APPROVED:   
 M. H. IRVINE - REG. C.E. NO. 3011

For of  
 lot 52  
 S.C.C.A.  
 Lands  
 M.S. 7-3  
 S.B. Co.

1477A

ATTN



ASSESSMENT NO. 396  
**DIAGRAM**

EXHIBITING VISTA AVENUE SANITARY SEWER DISTRICT

IN THE CITY OF RIVERSIDE ON WHICH WORK HAS BEEN DONE UNDER THE OFFICIAL CONTRACT OF THE SUPERINTENDENT OF STREETS OF SAID CITY WITH HENRY B. STEVENS DATED JANUARY 4, 1955 FOR THE CONSTRUCTION OF SANITARY SEWERS AND APPURTENANCES IN VISTA AVENUE AS IS MORE PARTICULARLY DESCRIBED IN SAID CONTRACT TO WHICH REFERENCE IS HEREBY MADE FOR FURTHER PARTICULARS; SAID DIAGRAM ALSO SHOWS THE RELATIVE LOCATION OF EACH LOT PORTION OF LOT PIECE OR PARCEL OF LAND ASSESSED FOR THE WORK DONE NUMBERED IN CIRCLES TO CORRESPOND TO THE RED INK NUMBERS IN THE ASSESSMENT HEREIN FIGURES NEXT TO PROPERTY LINES SHOW LENGTH OF SAID LINES IN FEET. THE MARK ( ) MEANS FEET. PROPERTY LINES THAT DIFFER FROM THE RECORDED SUBDIVISIONS ARE SHOWN BY BROKEN LINES. THE DISTRICT BENEFITED IS BOUNDED BY A HEAVY DASHED LINE PROPERTY COVERED BY THIS ASSESSMENT IS SHOWN ON THE FOLLOWING RECORDED MAPS:

FILES SUBDIVISION NO. 4 M.B. 6-60 REC. RIV. CO.

HEREIN THE LEGEND OF THE DIFFERENT KINDS OF WORK PERFORMED IS SHOWN AS FOLLOWS:  
 8 IN. VITRIFIED PIPE SEWER AND MANHOLES —○—  
 4 IN. . . . . LATERALS ———  
 8 IN. X 4 IN. . . . . WYES ———

CITY ENGINEER OF THE CITY OF RIVERSIDE  
 THE FOLLOWING IS A STATEMENT OF AMOUNTS OF DIFFERENT KINDS OF WORK DONE BY HENRY B. STEVENS UNDER CONTRACT DATED JANUARY 4, 1955 PURSUANT TO RESOLUTION OF INTENTION NO. 6381 ADOPTED BY THE CITY COUNCIL OF THE CITY OF RIVERSIDE ON THE 5<sup>TH</sup> DAY OF OCTOBER 1954

880.28	LIN. FT. 8IN. VIT. CLAY PIPE SEWER	
288	.. 4 ..	LATERALS
18	8 IN. X 4 IN. . . . .	WYE BRANCHES
6	STD MANHOLES	

AT SAID CITY OF RIVERSIDE THIS 19<sup>TH</sup> DAY OF FEBRUARY, 1955

\_\_\_\_\_  
 CITY ENGINEER  
 OF THE CITY OF RIVERSIDE

I HEREBY CERTIFY THAT THE ABOVE WORK WAS DONE IN ACCORDANCE WITH LINES AND GRADES FURNISHED BY ME AND THAT THE DIAGRAM OF THE ASSESSMENT DISTRICT FOR THE SAME IS CORRECT.

\_\_\_\_\_  
 CITY ENGINEER  
 OF THE CITY OF RIVERSIDE

RECORDED AT 8:10 O'CLOCK A.M.  
 THIS 11<sup>TH</sup> DAY OF MAY, 1955  
 \_\_\_\_\_  
 SUPERINTENDENT OF STREETS  
 OF THE CITY OF RIVERSIDE

1477A  
 1477-1