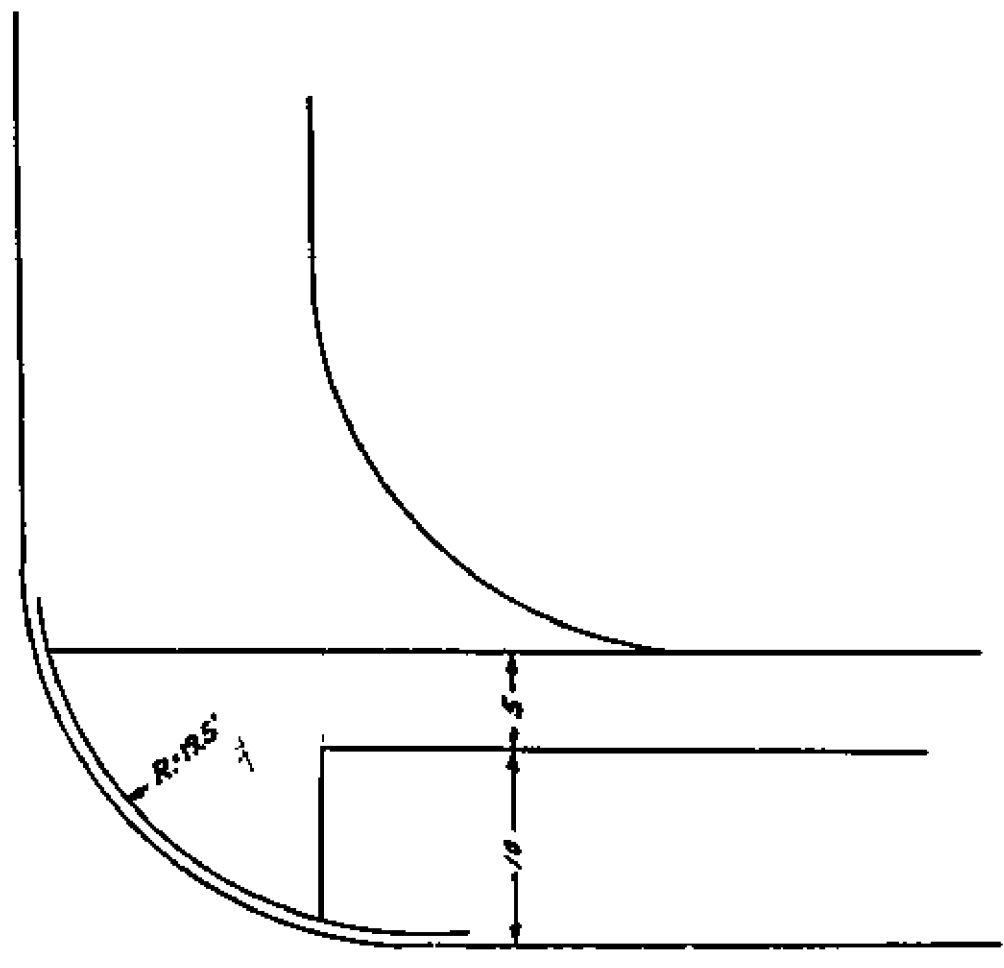
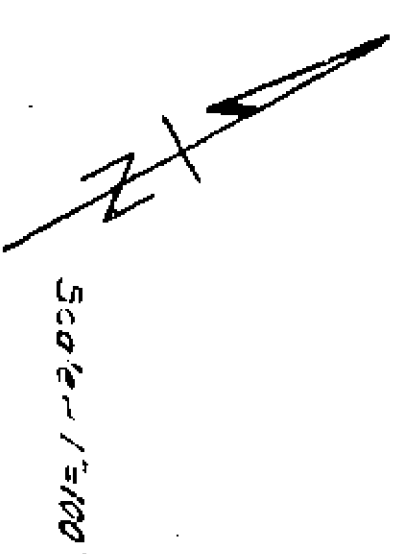


- Pole
- Conc
- Pole
- Tree
- Tree
- Conc
- Tree
- Sign Post
- 2" Water Main
- 4" Type
- 8" Conc. Pipe
- Drainage Ditch
- Driveway
- Tree
- Tree
- TR. Co. M.H.
- Pole
- W.B.
- Tree
- Conc
- Pole
- Tree
- W.B.
- Conc
- Conc
- W.B.
- Tree
- Pole
- Tree
- W.B.
- Conc
- Conc
- W.B.
- Pole
- Manhole
- F.H.
- W.B.
- Conc
- Bushes
- Header
- W.B.
- Tree
- Conc
- Pole
- Header
- Tree
- W.B.
- TR. Co. M.H.
- Driveway
- Tree
- Header
- Roofs
- W.B.
- W.B.
- Driveway

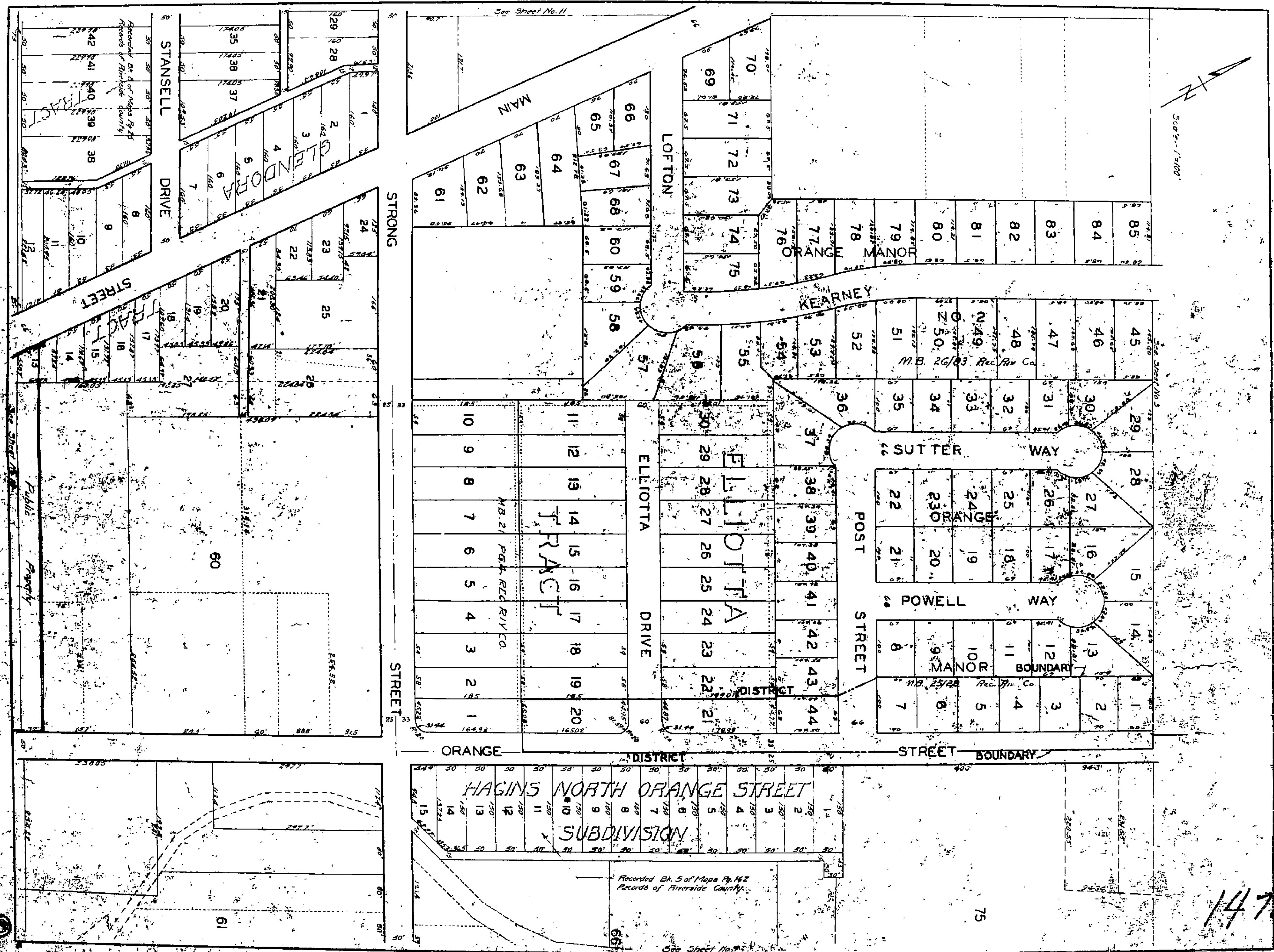


Typical Corner Detail  
Scale 1" = 10'

PLAN NO. 1478  
 FOR THE CONSTRUCTION OF  
 CONCRETE SIDEWALKS  
 IN THE  
**SIDEWALK IMPROVEMENT**  
**DISTRICT NO. 5**  
 RIVERSIDE, CALIFORNIA  
 DISTRICT BOUNDARY SHOWN THUS ———  
 SCALE 1 IN 50 FT.  
 FB 55-18  
 SEPTEMBER 1954  
 APPROVED: *[Signature]*  
 M.H. IRVINE - REG. C.E. NO. 3011



Scale 1/3100



Approved by the Board of Supervisors of Riverside County  
Records of Riverside County

Recorded Bk. 5 of Maps Pg. 142  
Records of Riverside County

1478

75

ORANGE

STREET BOUNDARY

HAGINS NORTH ORANGE STREET

SUBDIVISION

See Sheet No. 11

Public Property

MANOR BOUNDARY

MANOR

MANOR

MANOR

MANOR

MANOR

MANOR

MANOR

MANOR

MANOR

MANOR

ELLIOTTA DRIVE

LOFTON

KEARNEY

ORANGE

SUTTER WAY

POWELL WAY

POST STREET

STRONG STREET

STANSELL DRIVE

STREET

STREET

STREET

STREET