

MAP NO 1483A
 SHOWING THE LANDS INCLUDED WITHIN
 THE ASSESSMENT DISTRICT TO BE BENEFITED
 BY THE CONSTRUCTION OF SANITARY SEWERS
 IN THE MATTER OF
**WASHINGTON STREET
 SANITARY SEWER DISTRICT**
 RIVERSIDE, CALIFORNIA
 DISTRICT BOUNDARY SHOWN THUS ————
 SCALE : 1 IN. = 100 FT. SEPT. 1954
 APPROVED: *M. H. Irvine*
 M. H. IRVINE - REG. C.E. NO. 3011
 CITY ENGINEER

1483A

ASSESSMENT NO. 399
DIAGRAM

EXHIBITING WASHINGTON STREET SANITARY SEWER DISTRICT

IN THE CITY OF RIVERSIDE ON WHICH WORK HAS BEEN DONE UNDER THE OFFICIAL CONTRACT OF THE SUPERINTENDENT OF STREETS OF SAID CITY WITH C.O. BRAND DATED FEB. 2, 1955

FOR THE CONSTRUCTION OF A SANITARY SEWER & APPURTENANCES IN WASHINGTON STREET

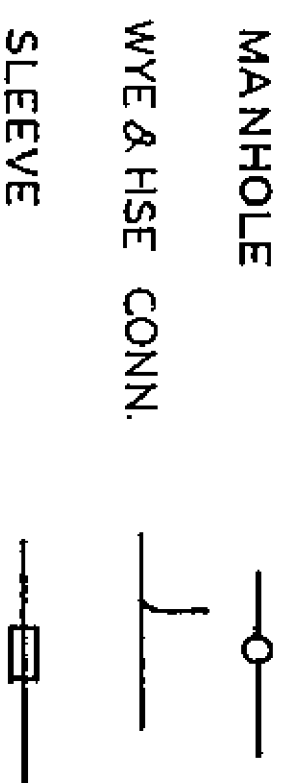
AS IS MORE PARTICULARLY DESCRIBED IN SAID CONTRACT TO WHICH REFERENCE IS HEREBY MADE FOR FURTHER PARTICULARS, SAID DIAGRAM ALSO SHOWS THE RELATIVE LOCATION OF EACH LOT PORTION OF LOT PIECE OR PARCEL OF LAND ASSESSED FOR THE WORK DONE NUMBERED IN CIRCLES TO CORRESPOND TO THE RED INK NUMBERS IN THE ASSESSMENT

HEREIN FIGURES NEXT TO PROPERTY LINES SHOW LENGTH OF SAID LINES IN FEET. THE MARK (') MEANS FEET. PROPERTY LINES THAT DIFFER FROM THE RECORDED SUBDIVISIONS ARE SHOWN BY BROKEN LINES. THE DISTRICT BENEFITED IS BOUNDED BY A HEAVY DASHED LINE
 PROPERTY COVERED BY THIS ASSESSMENT IS SHOWN ON THE FOLLOWING RECORDED MAPS:

ORANGE ACRES	BLK 1	M.B.	3-7	REC. RIV. CO.
PETERSON SUB.	LOT 36	..	23-50.51
MADISON PARK	LOTS 22, 23	..	14-82.83
R. L. & I ACO.	POR. LOT 12 BLK 19	..	1-70	.. S.B. ..
SAYWARD & EVANS	POR. BLK 20	..	3-2

1483A

HEREIN THE LEGEND OF THE DIFFERENT KINDS OF WORK PERFORMED IS SHOWN AS FOLLOWS:



CITY ENGINEER OF THE CITY OF RIVERSIDE
 THE FOLLOWING IS A STATEMENT OF AMOUNTS OF DIFFERENT KINDS OF WORK DONE BY C. O. BRAND UNDER CONTRACT DATED FEB. 2, 1955 PURSUANT TO RESOLUTION OF INTENTION NO. 64.51 ADOPTED BY THE CITY COUNCIL OF THE CITY OF RIVERSIDE ON THE 23RD DAY OF NOV. 1954

1006.73	FT	8" V.C.P
492.	..	4" .. HOUSE CONN.
24	..	24" 12 GA. C.M.P SLEEVE
3	STD MANHOLES	
25	WYE BRANCHES	8" X 4"

AT SAID CITY OF RIVERSIDE THIS 27TH DAY OF APRIL, 1955

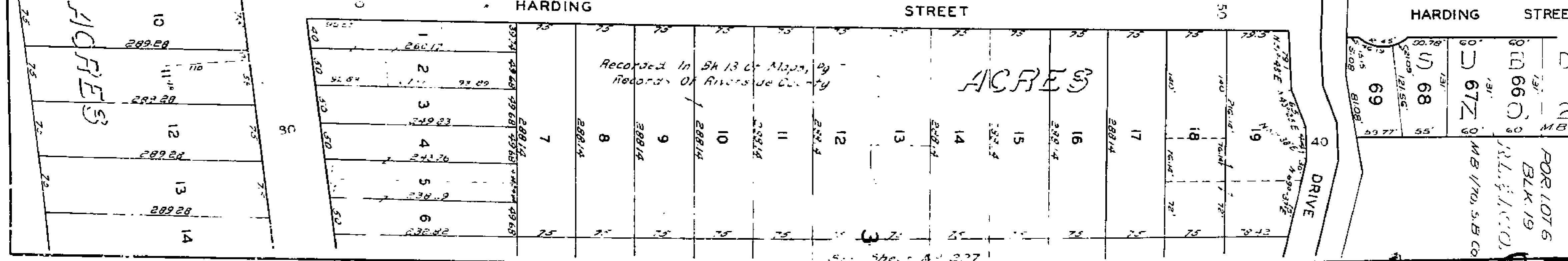
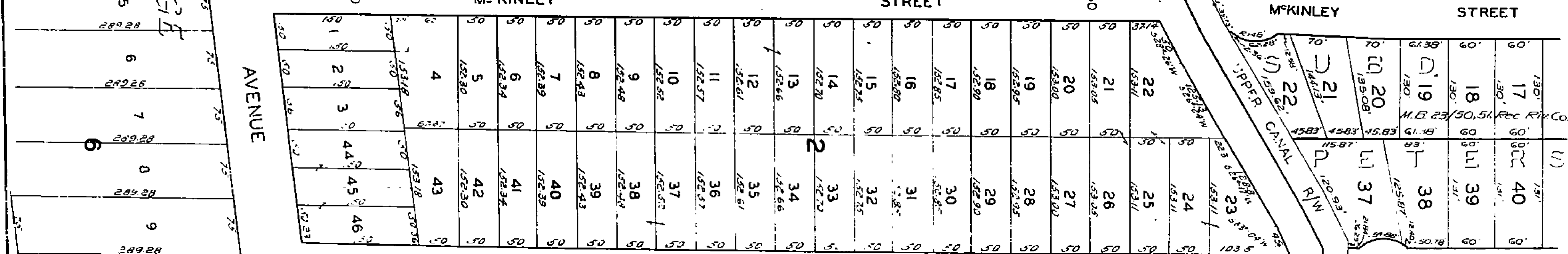
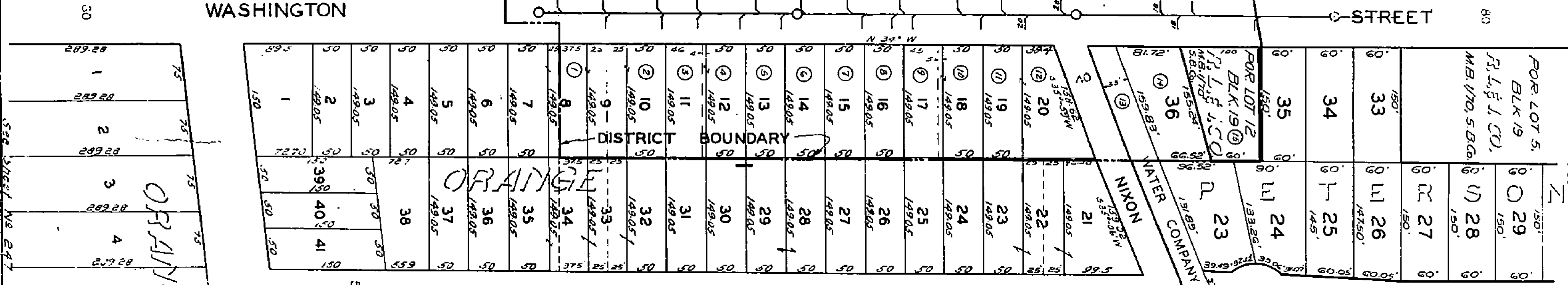
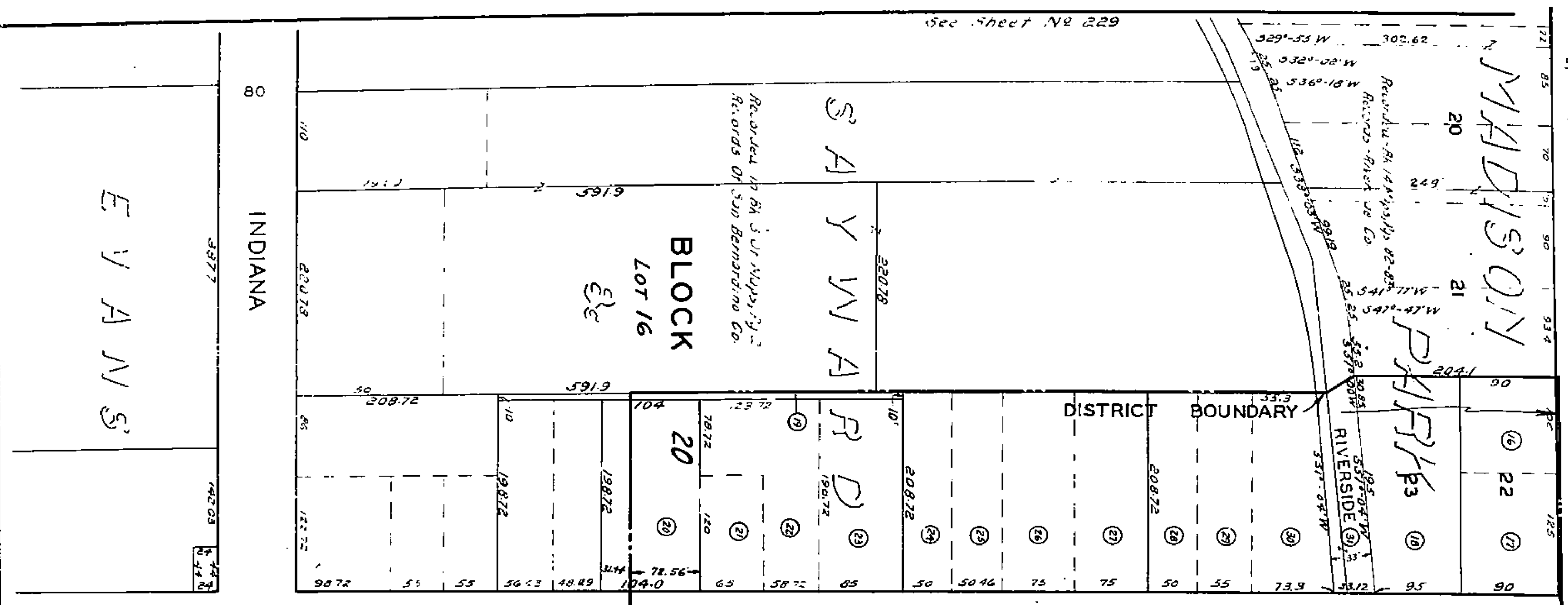
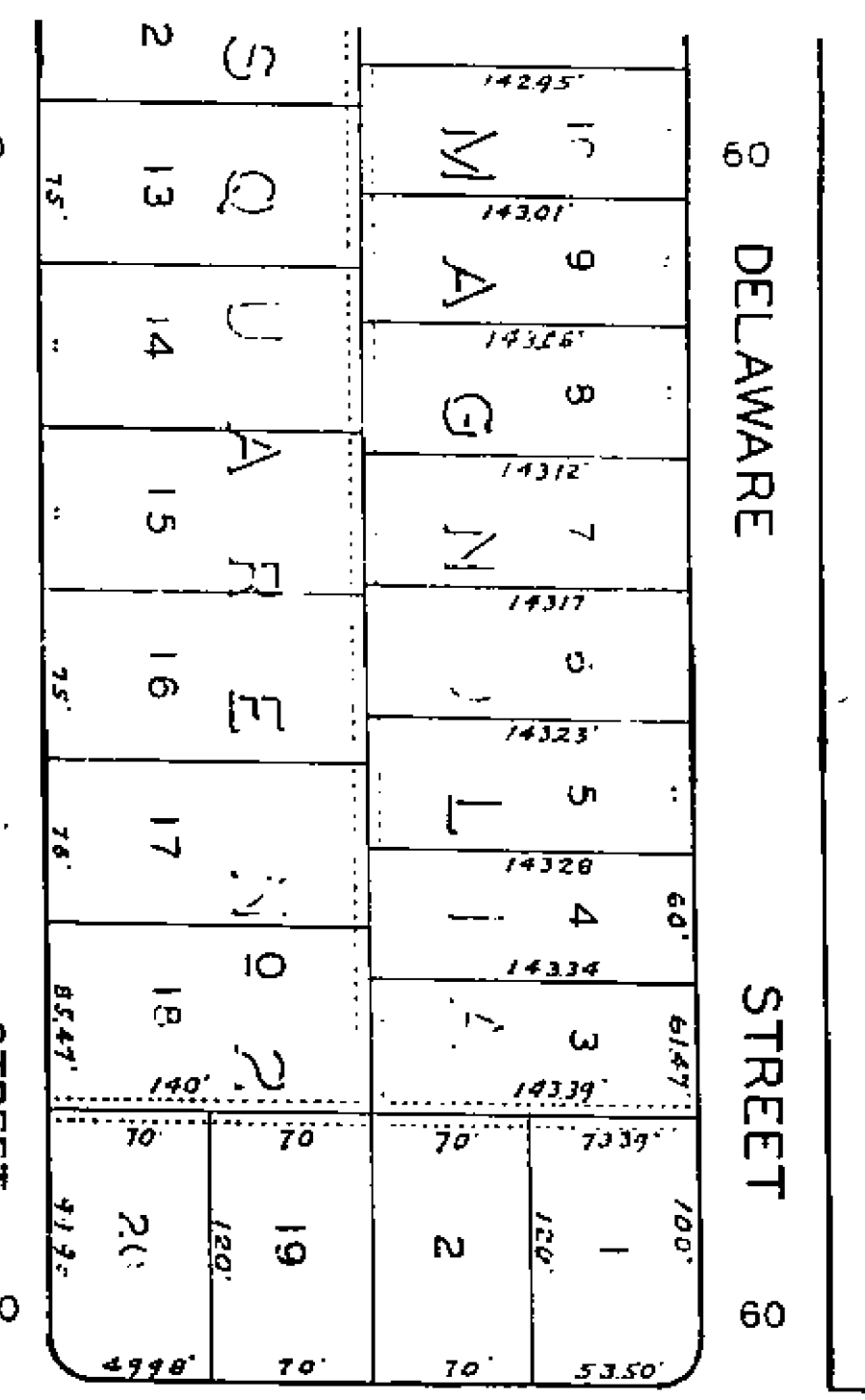
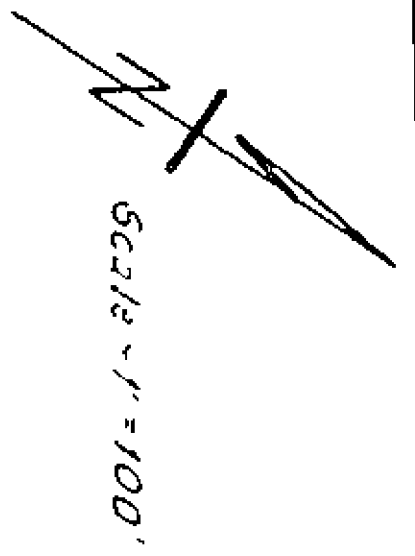
CITY ENGINEER
 OF THE CITY OF RIVERSIDE

I HEREBY CERTIFY THAT THE ABOVE WORK WAS DONE IN ACCORDANCE WITH LINES AND GRADES FURNISHED BY ME AND THAT THE DIAGRAM OF THE ASSESSMENT DISTRICT FOR THE SAME IS CORRECT.

CITY ENGINEER
 OF THE CITY OF RIVERSIDE

RECORDED AT 9:15 O'CLOCK A.M.
 THIS 15TH DAY OF JUNE 1955

SUPERINTENDENT OF STREETS
 OF THE CITY OF RIVERSIDE



228

1483A