

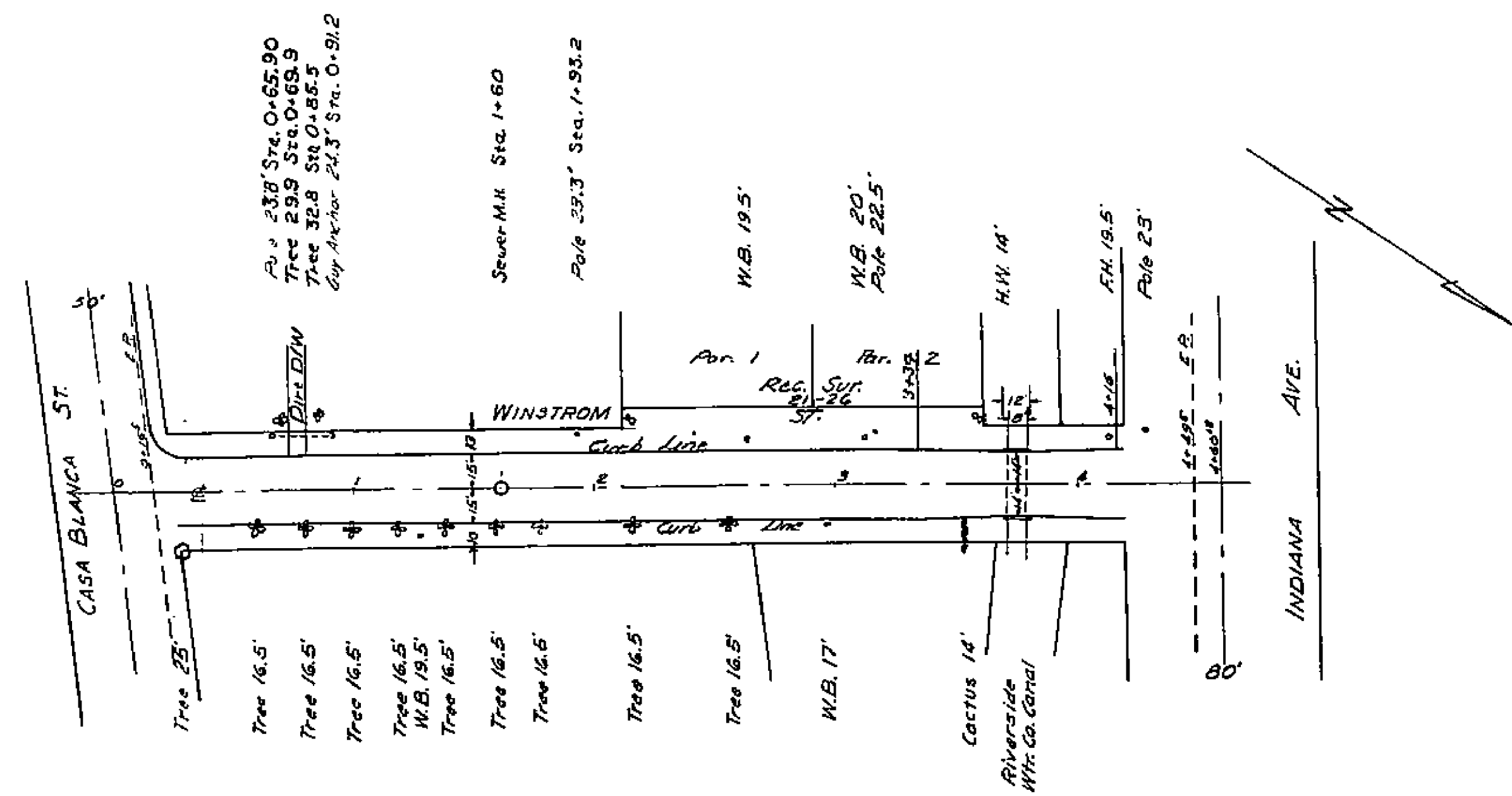
PLAN NO 1484
 FOR THE CONSTRUCTION OF
 CURBS & GUTTERS
 IN THE
WINSTROM STREET
IMPROVEMENT DISTRICT

RIVERSIDE, CALIFORNIA

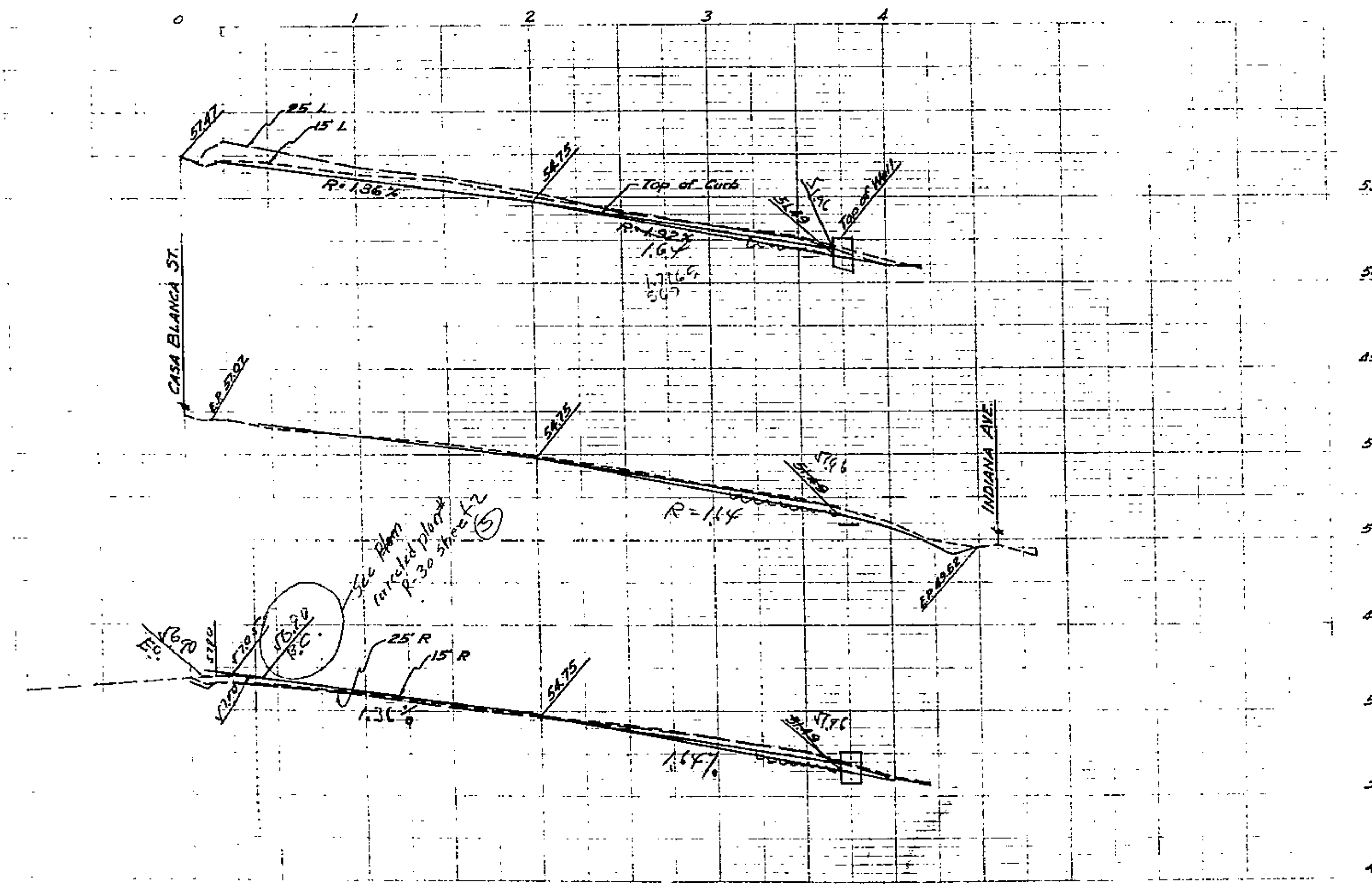
OCTOBER 1954

SCALES - HOR. 1 IN. = 50 FT.
 VER. 1 IN. = 5 FT.

F.B.
 APPROVED: *M.H. Irvine*
 M.H. IRVINE, REG. C.E. NO. 3011
 CITY ENGINEER



B.M. EL. 859.53 P.R. SPIKE IN POLE
 *1198J S.W. COR. WINSTROM &
 CASA BLANCA ST. F.D. 407-29



1484