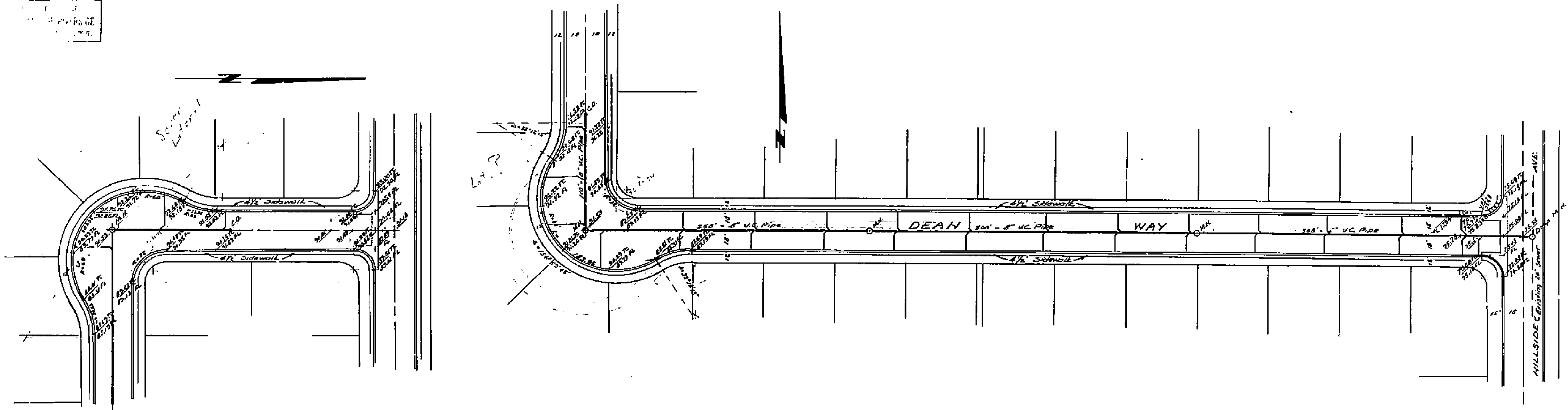
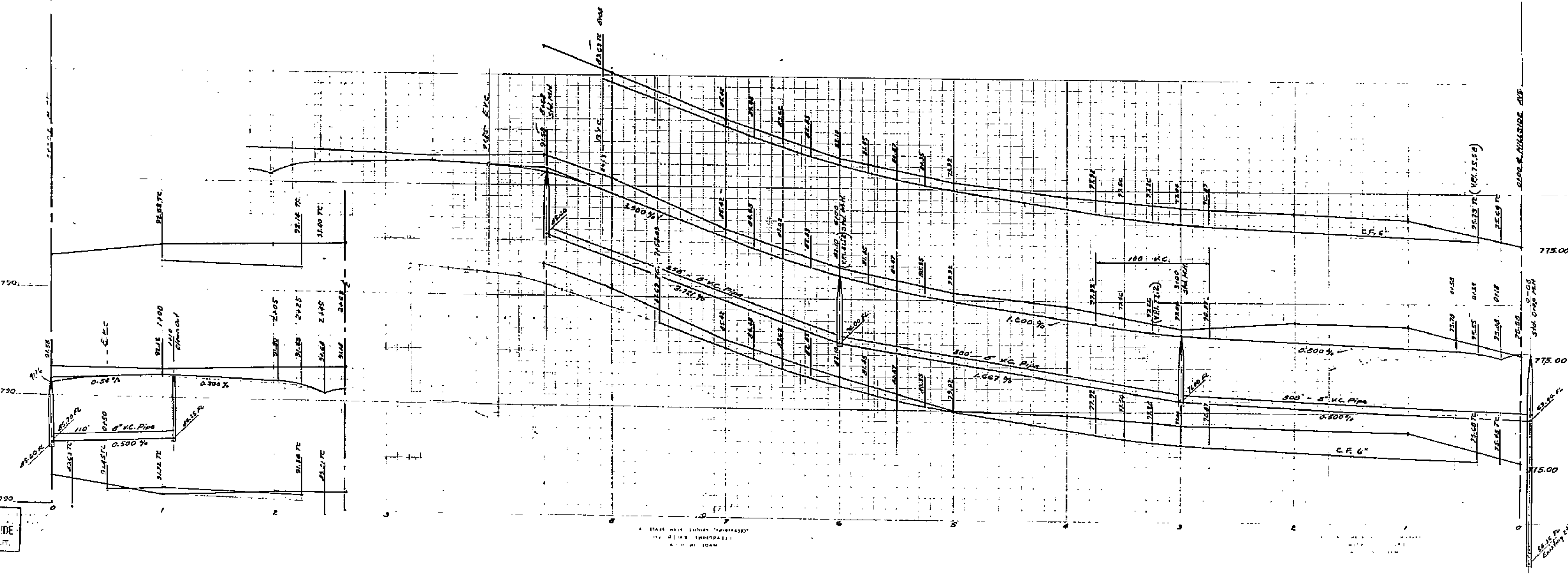


PROPERTY OF
CITY OF PARSIDE
...D.C.



Sheet 3 of 3 sheets



Approved Nov. 17, 1953
M. H. Duvine
City Engineer

PLAN & PROFILE
DEAN WAY
ARLINGTON KNOLLS
July 1953 J. F. Davidson, C.E.

Scale Hor 1"=40'
Vert 1"=4'
AS 460-42

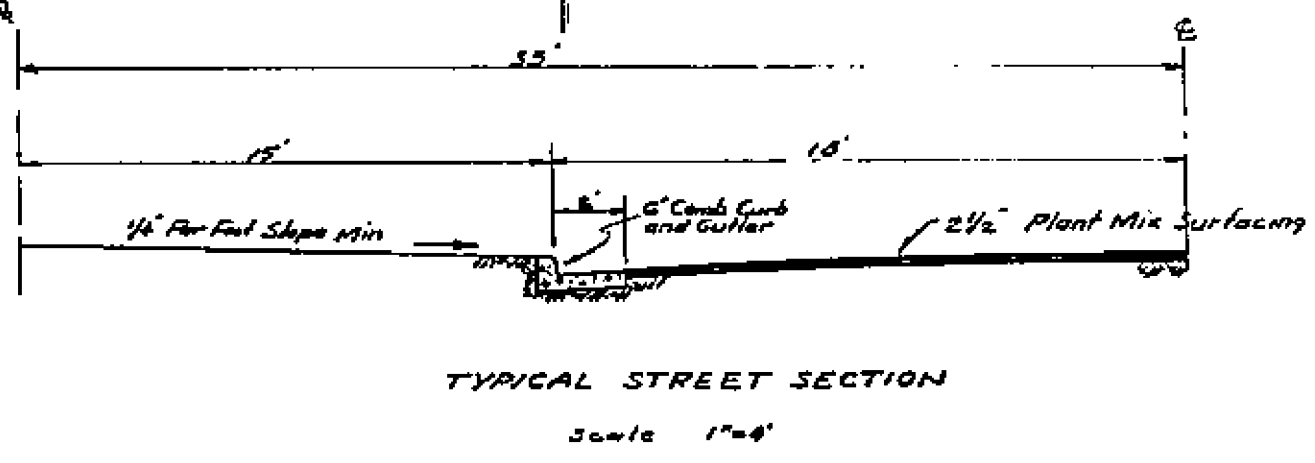
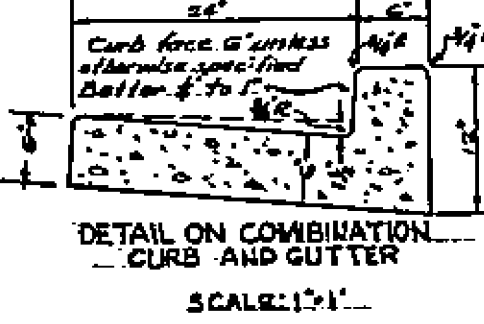
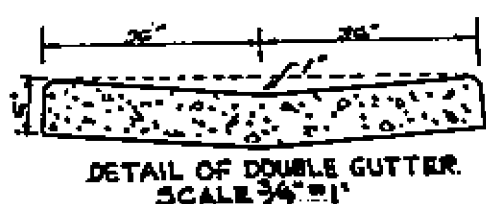
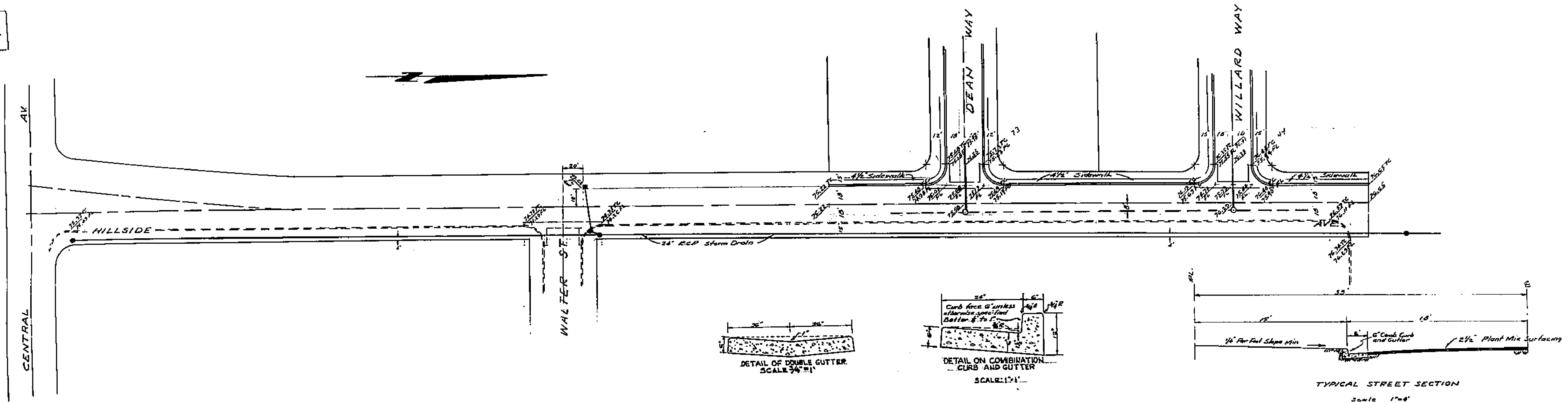
PROPERTY OF
CITY OF RIVERSIDE
...D.C.

1487

PROPERTY OF
CITY OF PARSIDE
...D.C.

CITY OF PLYMOUTH
ENGINEER

CITY OF RIVERSIDE
ENGINEER



Sheet 1 of 3 Sheets

City of Riverside
1237 J. East
Side of Hillside Ave. approx. 300' south of Mountain
View Elev. 777.81

Approved Nov 19 1953
M. H. ...
City Engineer

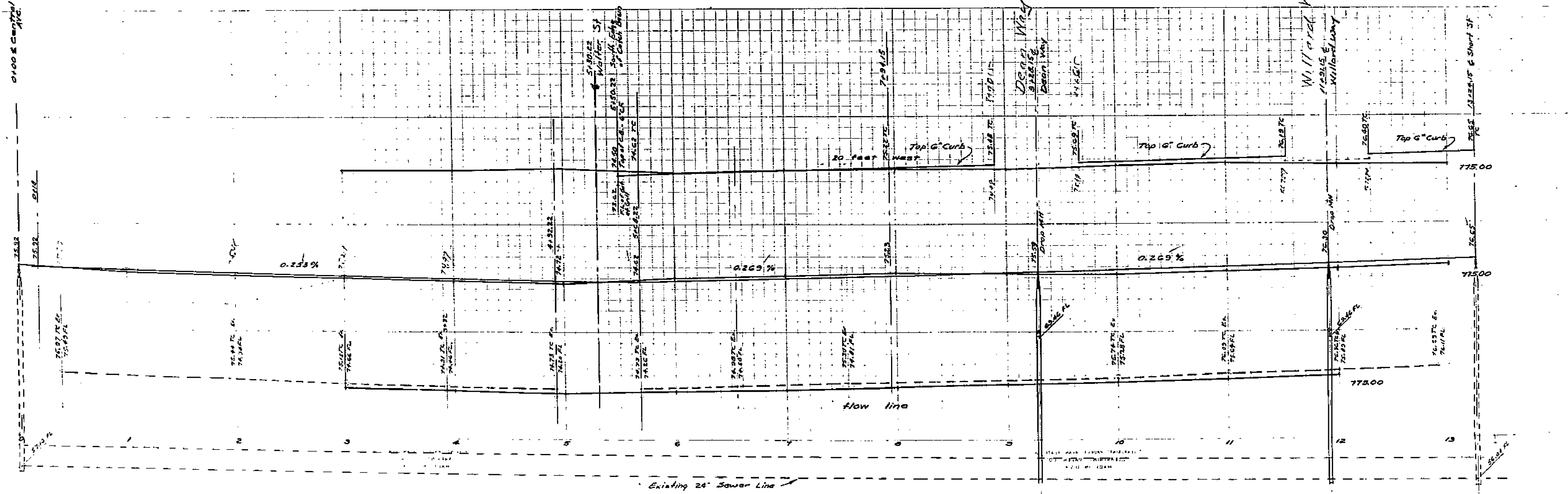
PLAN & PROFILE
HILLSIDE AVENUE
ARLINGTON KNOLLS
July 1953

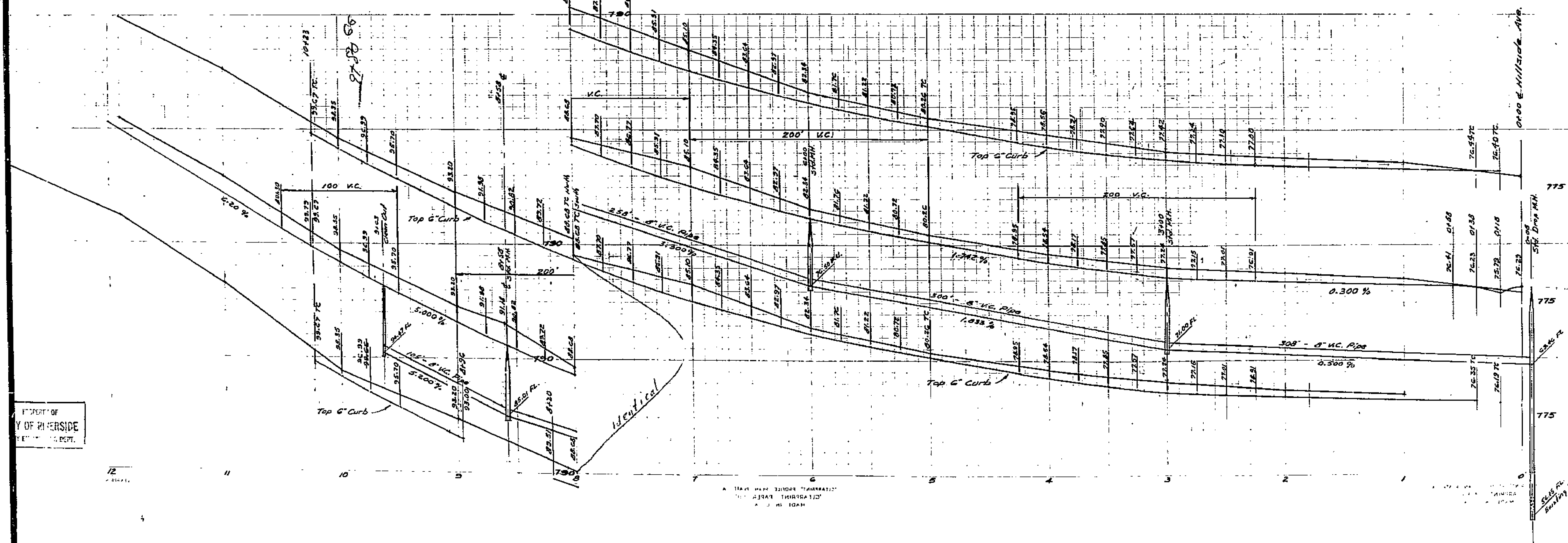
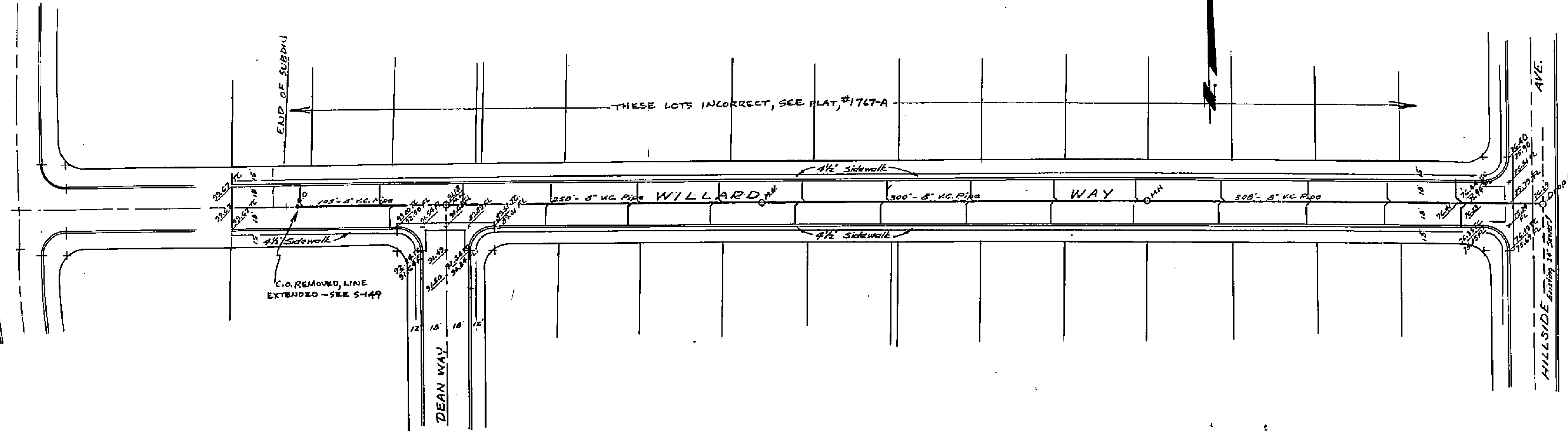
Scale 1" = 40'
1" = 100'

CITY OF PLYMOUTH
ENGINEER

1487

CITY OF PLYMOUTH
ENGINEER





Sheet 2 of 2 Sheets

Approved Nov 19 1953
M. J. Durva
City Engineer

PLAN & PROFILE
ARLINGTON KNOLLS
July 1953 J. F. D. W. J. C. E.
Scale Hor 1" = 40'
Vert 1" = 4'
PB 46-11-42

PROPERTY OF
CITY OF RIVERSIDE
REGISTERED BY #

1487