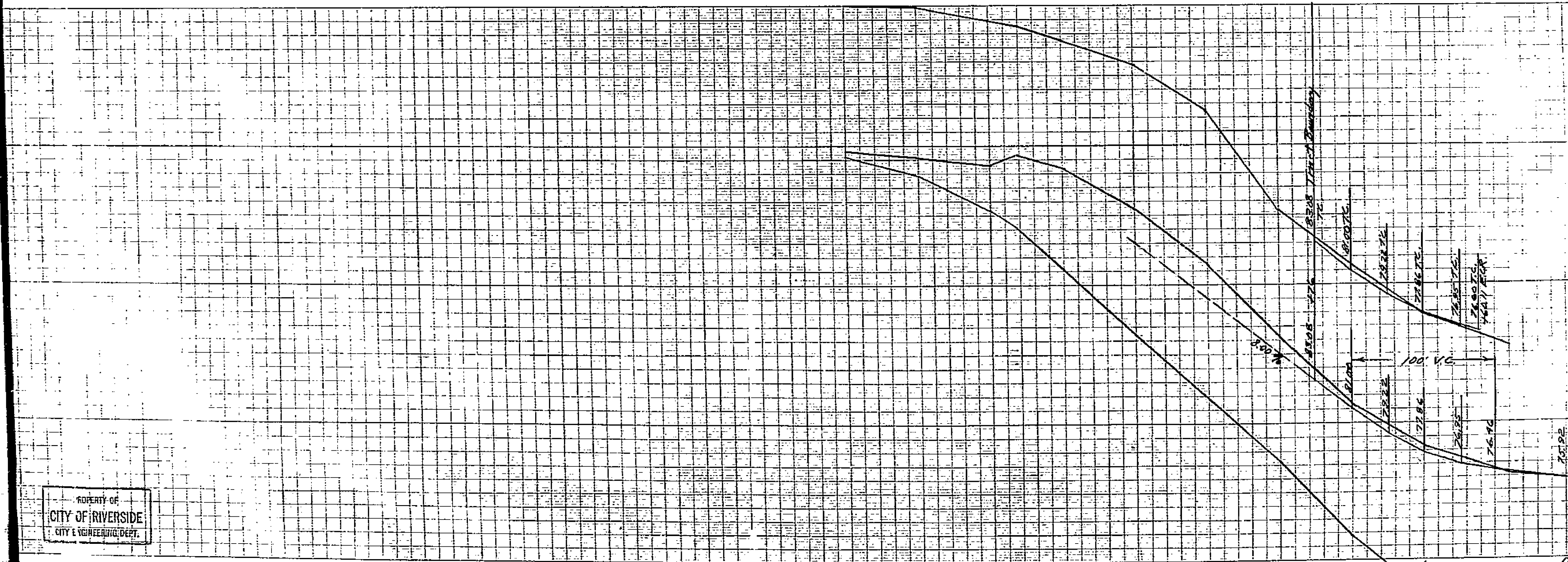
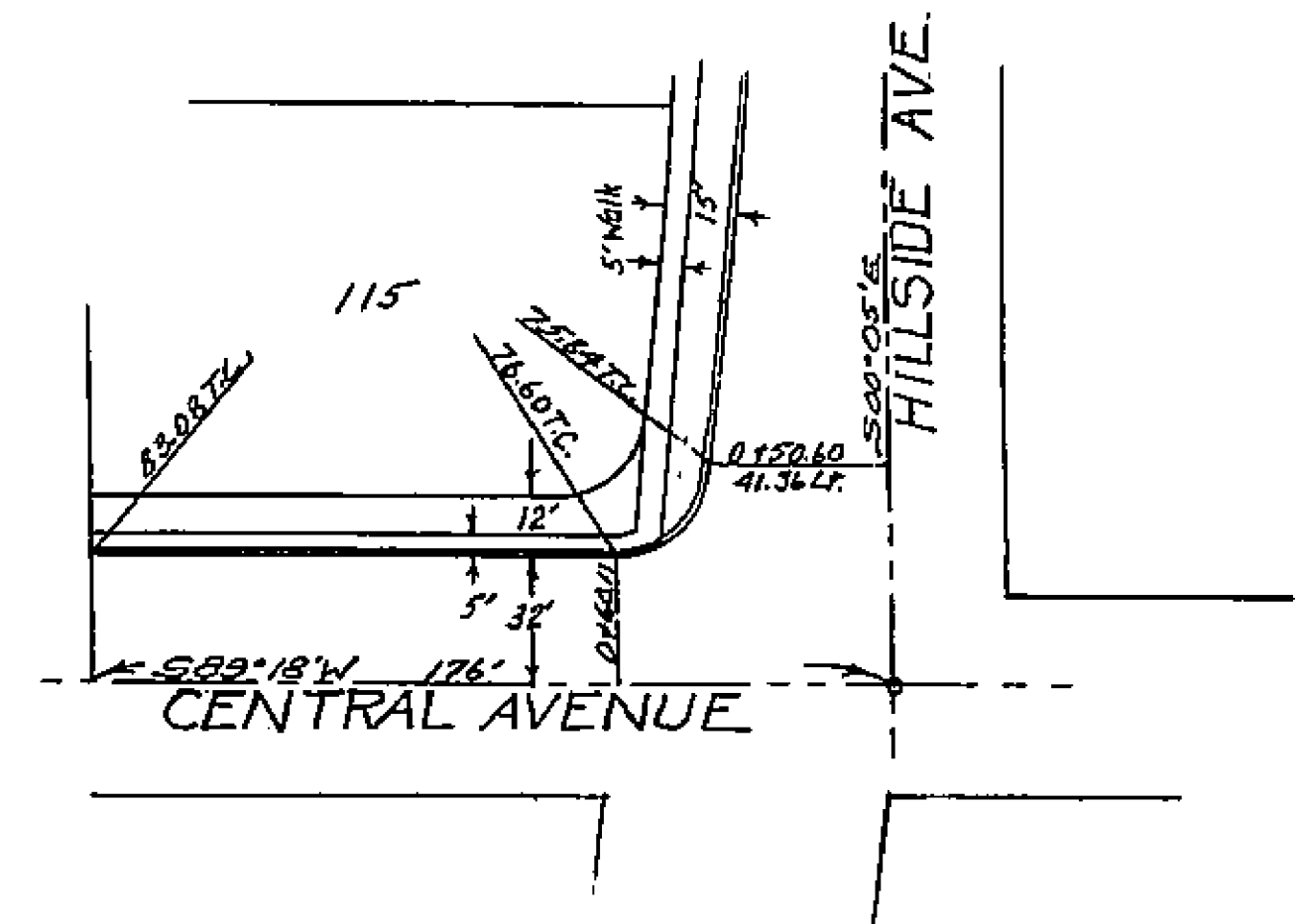


PROPERTY OF  
CITY OF RIVERSIDE  
CITY ENGINEERING DEPT.

PROPERTY OF  
CITY OF RIVERSIDE  
CITY ENGINEERING DEPT.



780-40.00 Approved *M.H. Irvine* 4-28-55  
City Engineer

Approved *M.H. Irvine* 3-24-55  
City Engineer

PROPERTY OF  
CITY OF RIVERSIDE  
CITY ENGINEERING DEPT.

PLAN AND PROFILE  
CENTRAL AVENUE  
ARLINGTON KNOLLS  
UNIT 2  
FEBRUARY, 1955 J. DAVIDSON, C.E.  
SCALE: HORIZ. 1"=40'  
VERT. 1"=4'

780-40.00 780-40.00 FB 509-18 SHEET 40E

PROPERTY OF  
CITY OF RIVERSIDE  
CITY ENGINEERING DEPT.

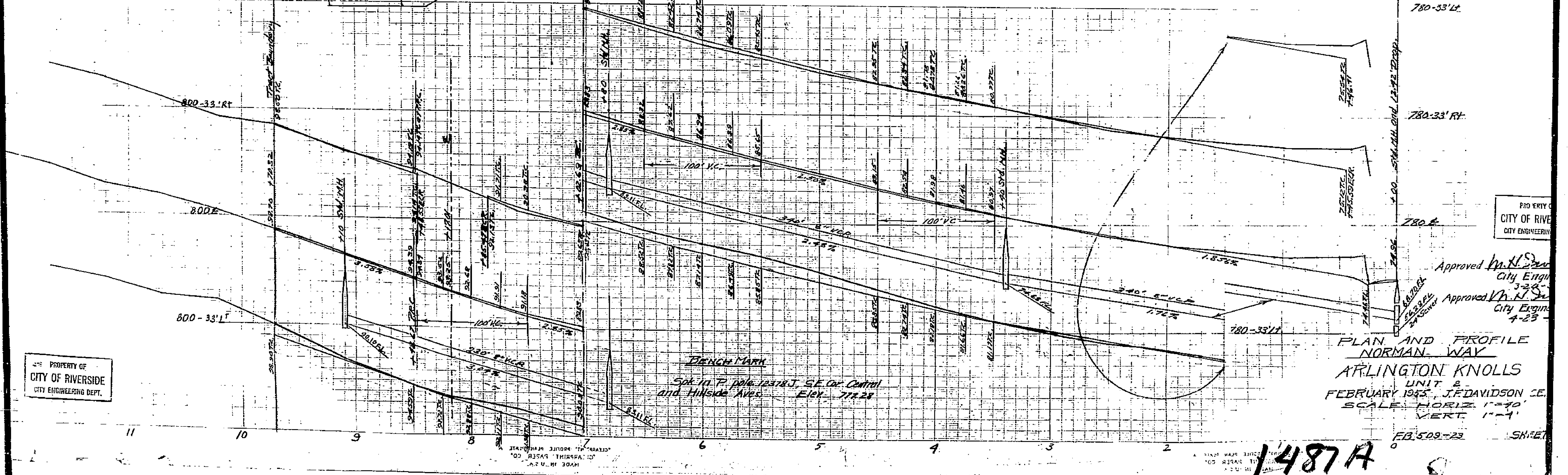
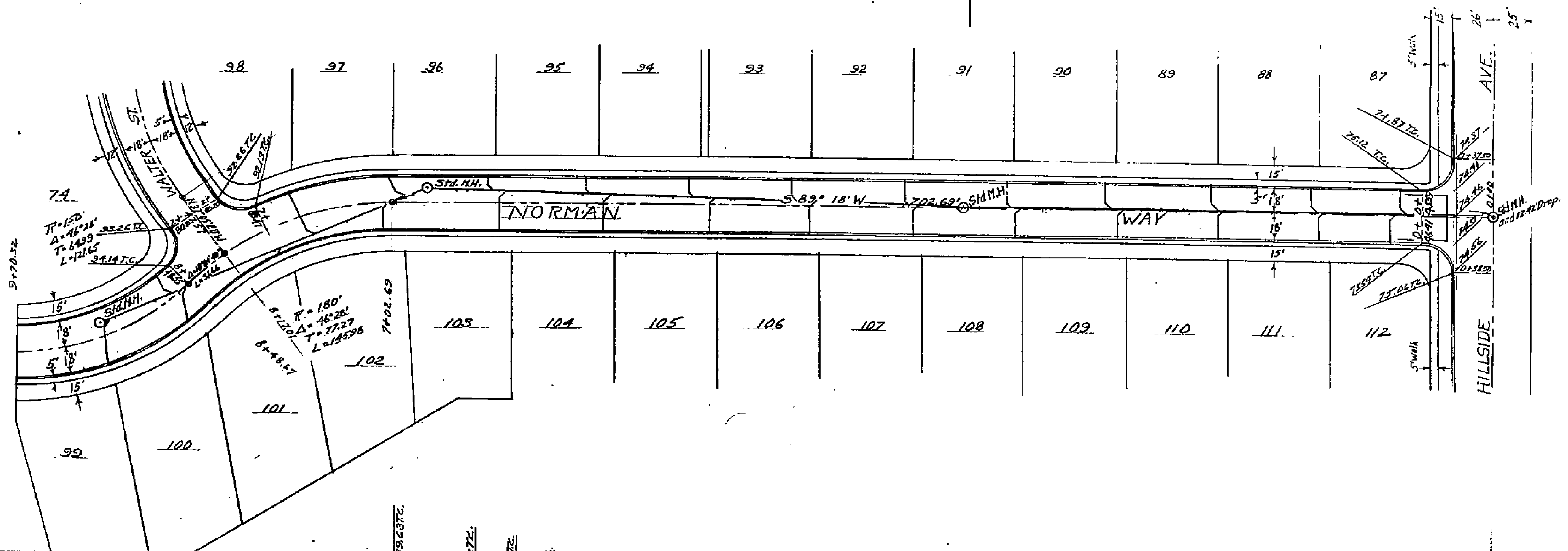
MADE IN U.S.A.  
CLEARBRIE PAPER CO.  
CLEARBRIE PAPER CO.

MADE IN U.S.A.  
CLEARBRIE PAPER CO.  
CLEARBRIE PAPER CO.

1487A

PROPERTY OF  
CITY OF RIVERSIDE  
CITY ENGINEERING DEPT.

PROPERTY OF  
CITY OF RIVERSIDE  
CITY ENGINEERING DEPT.



PROPERTY OF  
CITY OF RIVERSIDE  
CITY ENGINEERING DEPT.

PROPERTY OF  
CITY OF RIVERSIDE  
CITY ENGINEERING DEPT.

Approved *M.H. [Signature]*  
City Engineer  
3-23-53

Approved *V.H. [Signature]*  
City Engineer  
4-23-53

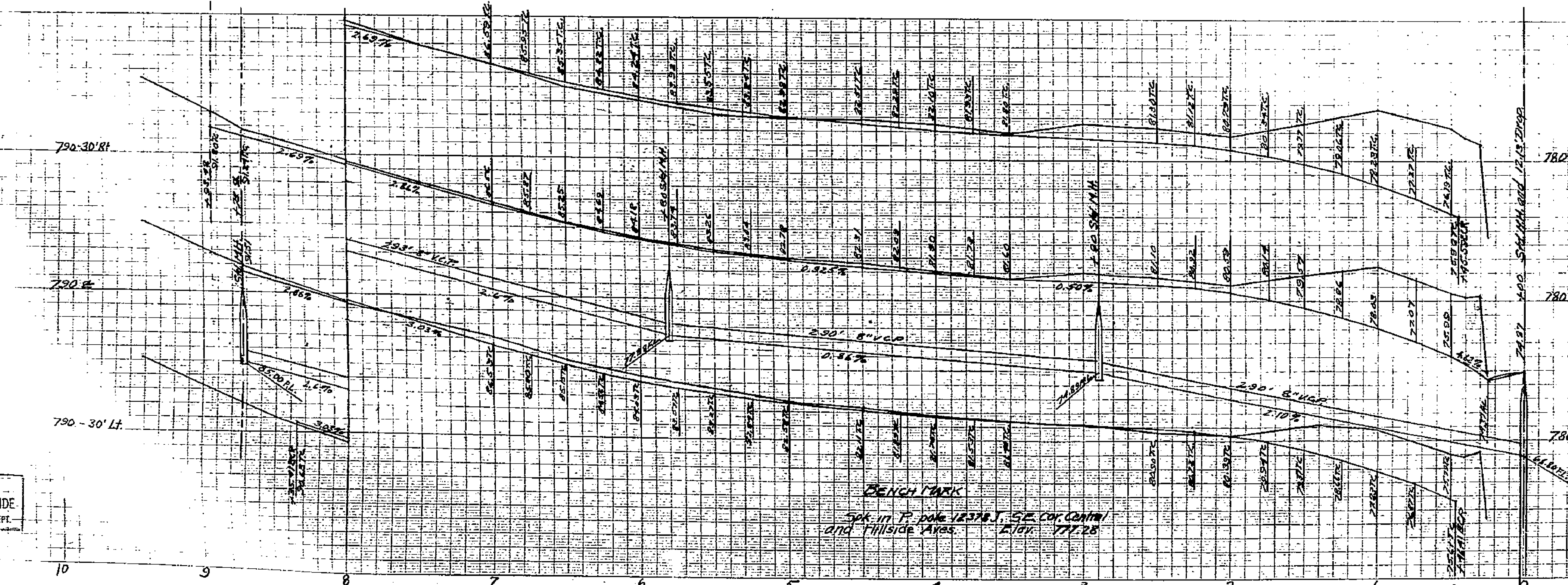
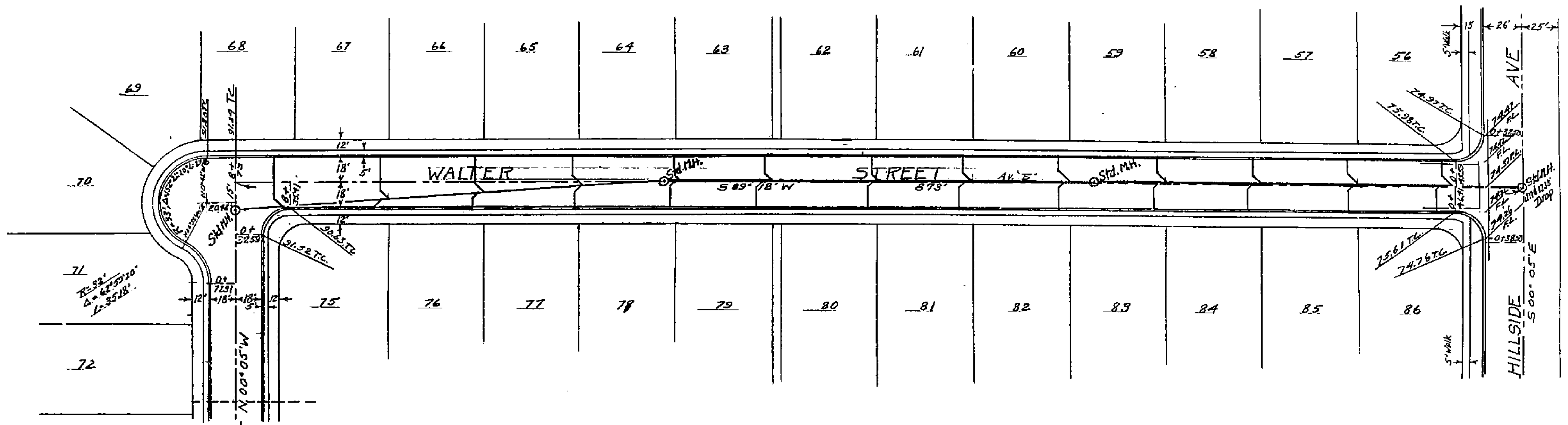
PLAN AND PROFILE  
NORMAN WAY  
ARLINGTON KNOLLS  
UNIT 2  
FEBRUARY 1953, J.F. DAVIDSON, C.E.  
SCALE: HORIZ. 1"=40'  
VERT. 1"=4'

FB 509-23 SH-ET

1487A

PROPERTY OF  
CITY OF RIVERSIDE  
CITY ENGINEERING DEPT.

PROPERTY OF  
CITY OF RIVERSIDE  
CITY ENGINEERING DEPT.



Approved *W. H. Durin* 4-28-55  
City Engineer

Approved *W. H. Durin* 3-24-55  
City Engineer

PROPERTY OF  
CITY OF RIVERSIDE  
CITY ENGINEERING DEPT.

PLAN AND PROFILE  
WALTER STREET  
ARLINGTON KNOLLS  
UNIT 2  
FEBRUARY 1955, J.F. DAVIDSON, C.E.  
SCALE: HORIZ. 1"=10'  
VERT. 1"=4'

FB 509-26 SHEET 2 OF 4

1487A

PROPERTY OF  
CITY OF RIVERSIDE  
CITY ENGINEERING DEPT.

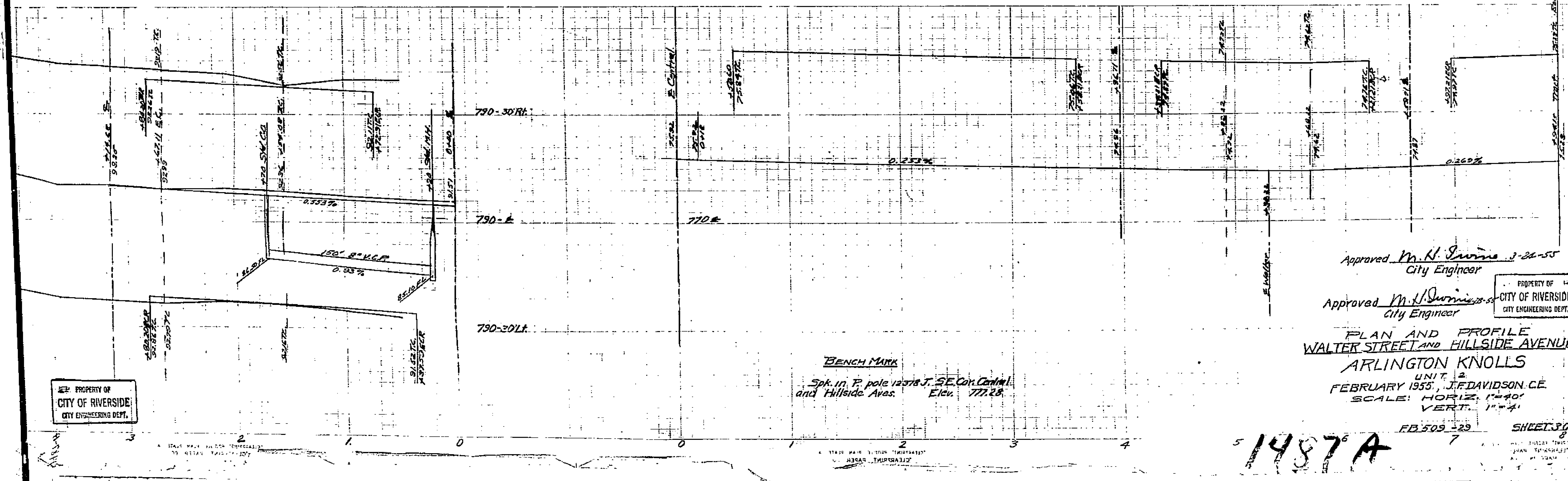
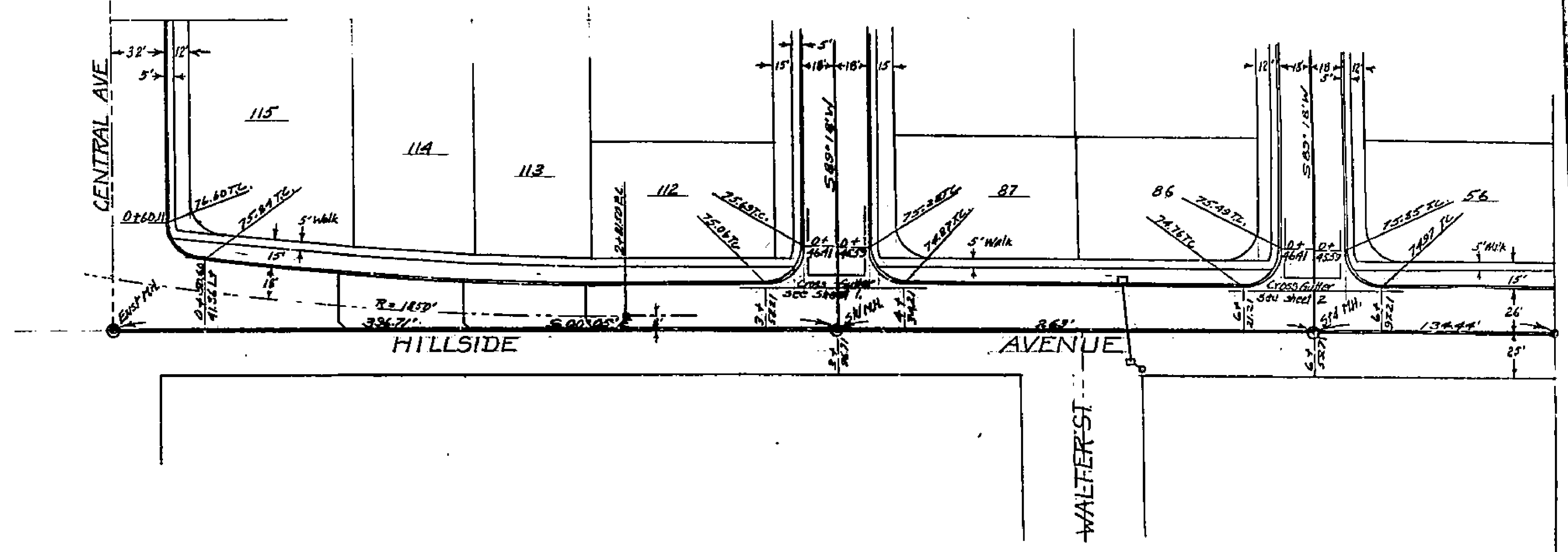
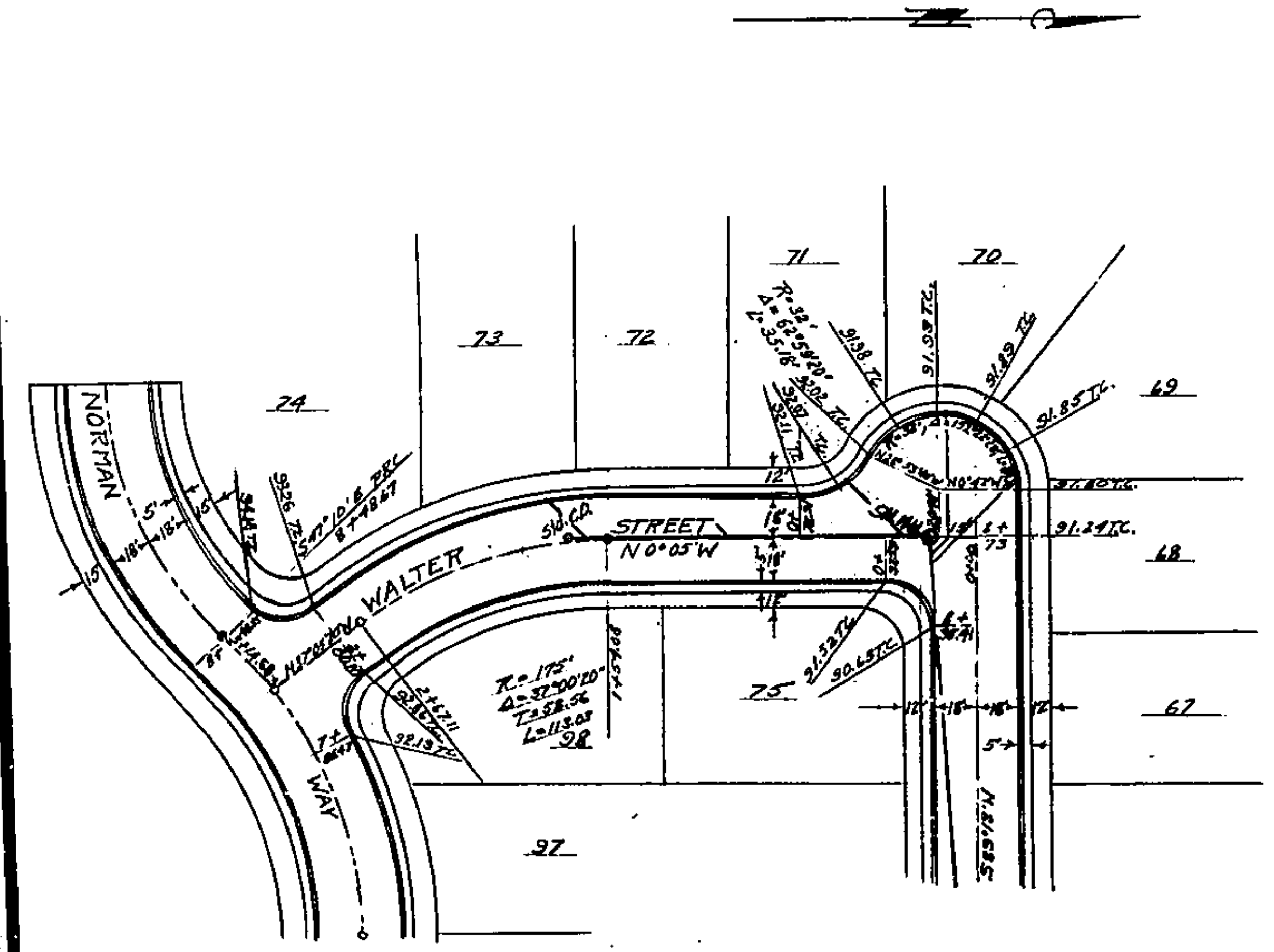
MADE IN U.S.A.  
CLEARPRINT PAPER CO.  
CLEARPRINT, PROFILE PAPER MADE

MADE IN U.S.A.  
CLEARPRINT PAPER CO.  
CLEARPRINT, PROFILE PAPER MADE



CITY OF RIVERSIDE  
CITY ENGINEERING DEPT.

PROPERTY OF  
CITY OF RIVERSIDE  
CITY ENGINEERING DEPT.



PROPERTY OF  
CITY OF RIVERSIDE  
CITY ENGINEERING DEPT.

PROPERTY OF  
CITY OF RIVERSIDE  
CITY ENGINEERING DEPT.

Approved *M. H. Swinnick* 3-22-55  
City Engineer

Approved *M. H. Swinnick* 3-22-55  
City Engineer

PLAN AND PROFILE  
WALTER STREET AND HILLSIDE AVENUE  
ARLINGTON KNOLLS

UNIT 2  
FEBRUARY 1955, J.F. DAVIDSON, C.E.  
SCALE: HORIZ. 1"=40'  
VERT. 1"=4'

FB 509-29 SHEET 3 OF 4

1487A