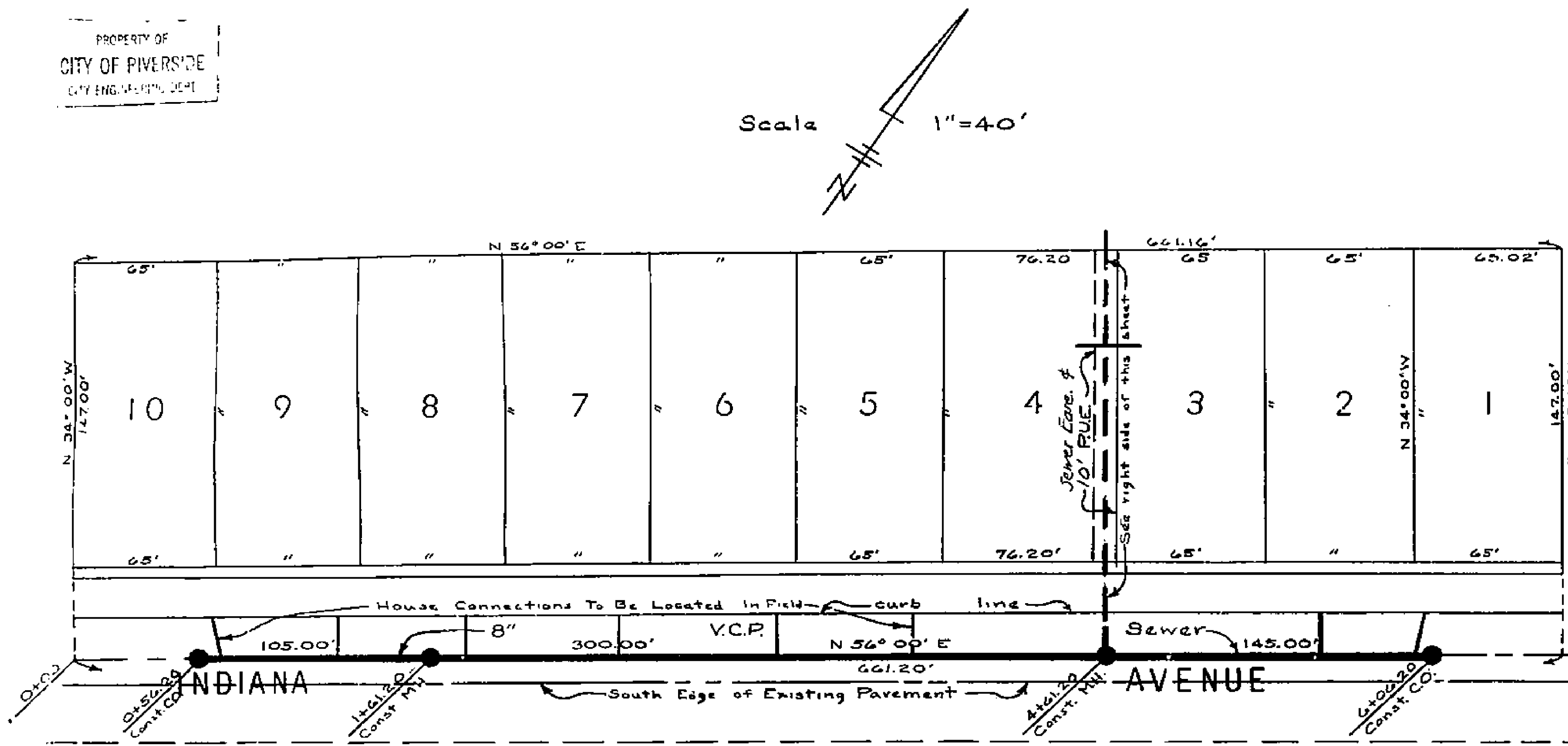


PROPERTY OF
CITY OF RIVERSIDE
CITY ENGINEERING DEPT.

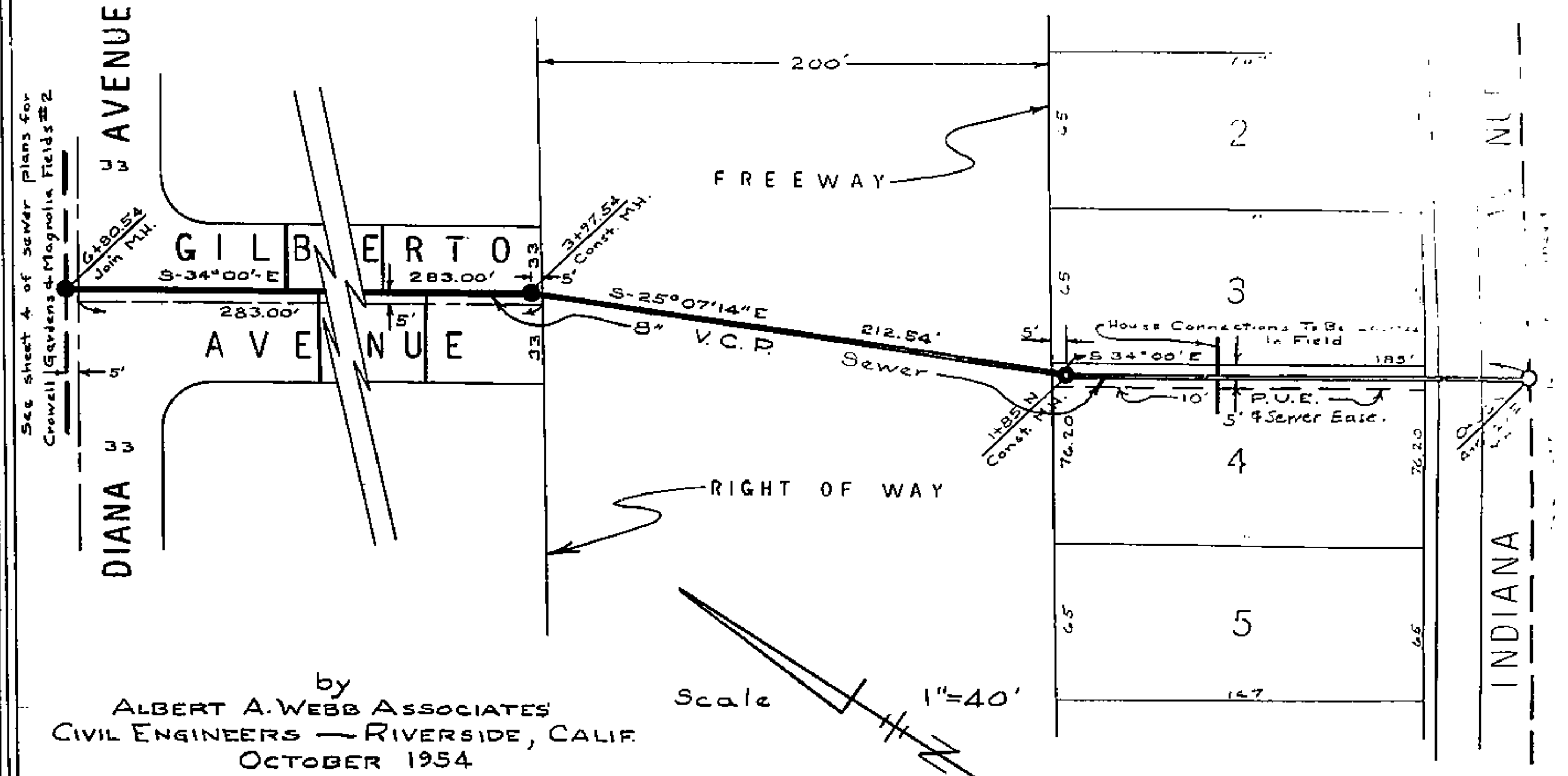
Scale 1"=40'



BENCH MARK - Top of concrete monument at intersection of Crowell (vacated) and Indiana Ave. (Opposite Lot 8) ELEVATION = 834.84'

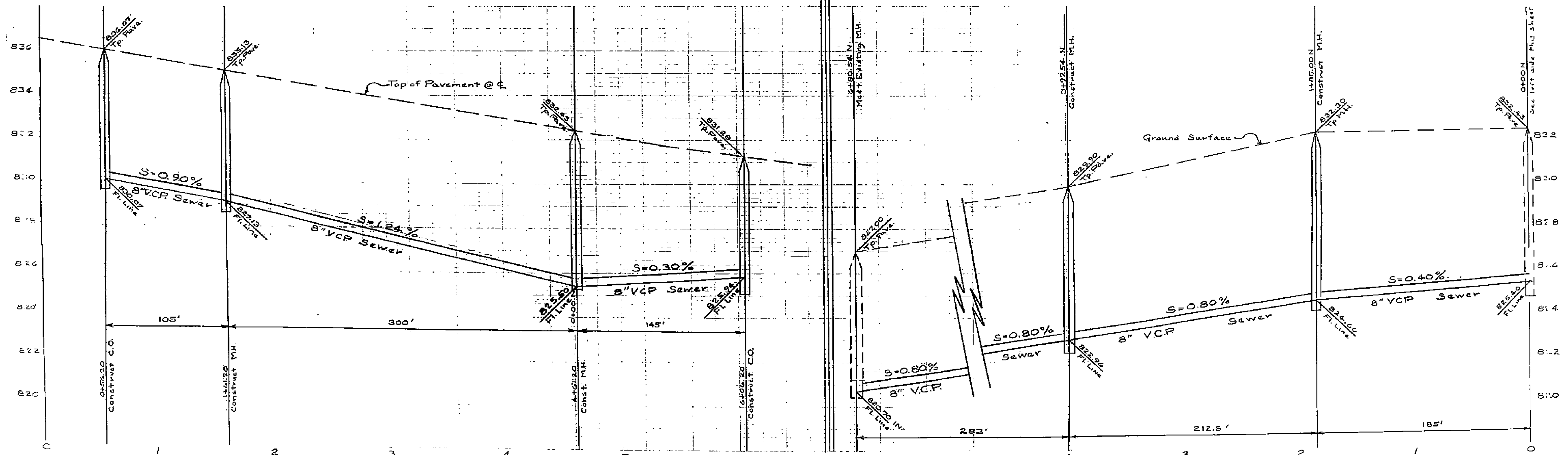
APPROVED _____ 1954
by _____
CITY ENGINEER

PLAN AND PROFILE
OF SEWER SYSTEM TO THE
INDIANA FIELDS



by
ALBERT A. WEBB ASSOCIATES
CIVIL ENGINEERS - RIVERSIDE, CALIF.
OCTOBER 1954

Scale 1"=40'

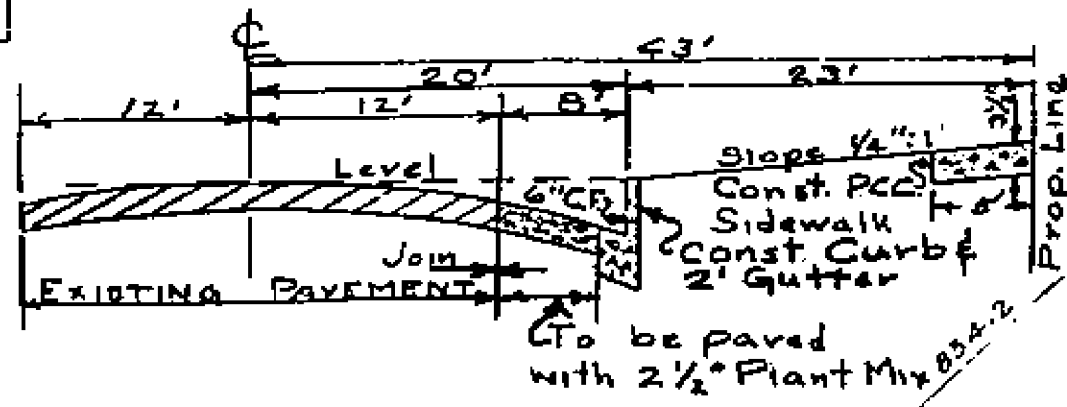


PROPERTY OF
CITY OF RIVERSIDE
CITY ENGINEERING DEPT.

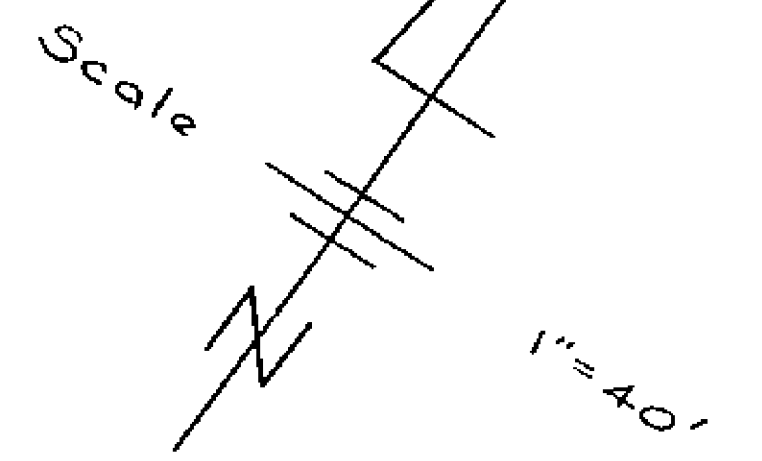
PROPERTY OF
CITY OF RIVERSIDE
CITY ENGINEERING DEPT.

1490

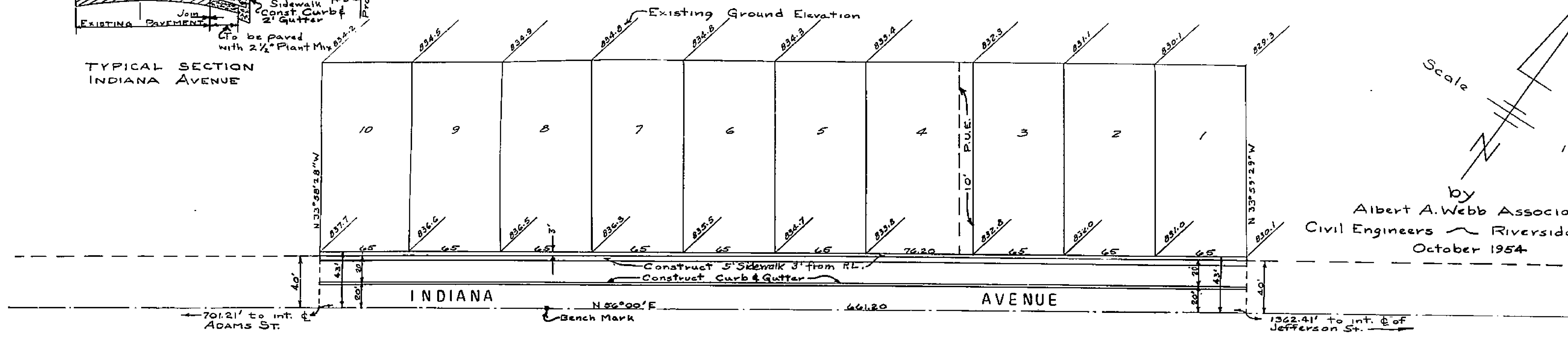
PROPERTY OF
CITY OF RIVERSIDE
CITY ENGINEERING DEPT.



Street of Indiana Fields
Plan Avenue Subdivision

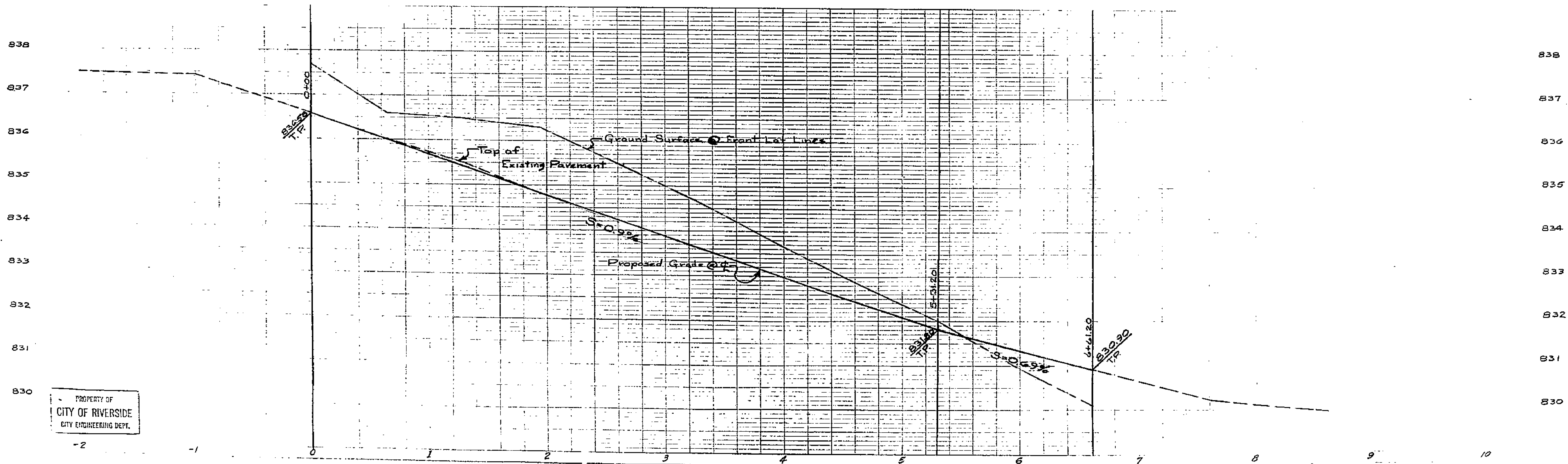


by
Albert A. Webb Associates
Civil Engineers - Riverside, California
October 1954



BENCH MARK - Top of conc. monument at intersection of Crowell (vacated) and Indiana Ave. (Opposite Lot 8) Elevation - 834.84'

Approved _____, 1954
by M.H. Irvine.
CITY ENGINEER.



PROPERTY OF
CITY OF RIVERSIDE
CITY ENGINEERING DEPT.

PLATE 1 - PLAN PROFILE - 1 A.S.
CLEARPRINT PAPER 20 x 31 DAL
NO. 1004-1

1490

PROPERTY OF
CITY OF RIVERSIDE
CITY ENGINEERING DEPT.