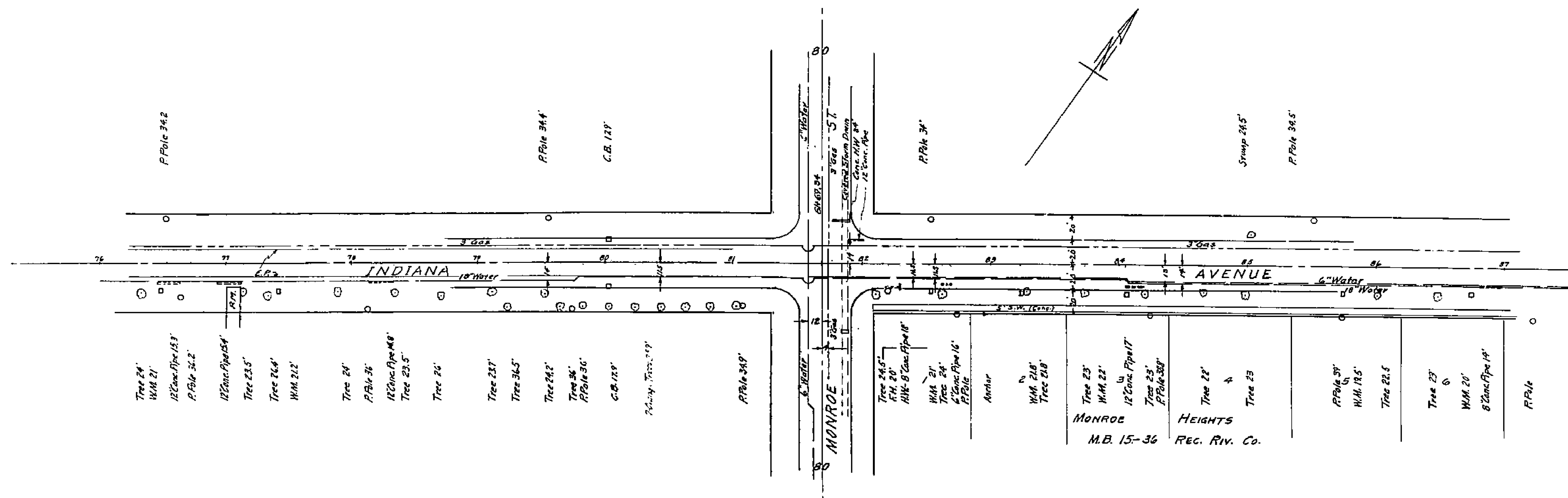


PLAN No. 1492
 GRADES FOR CURBS & GUTTERS
 500 FT EACH WAY FROM MONROE ST.
 ON
 INDIANA AVENUE

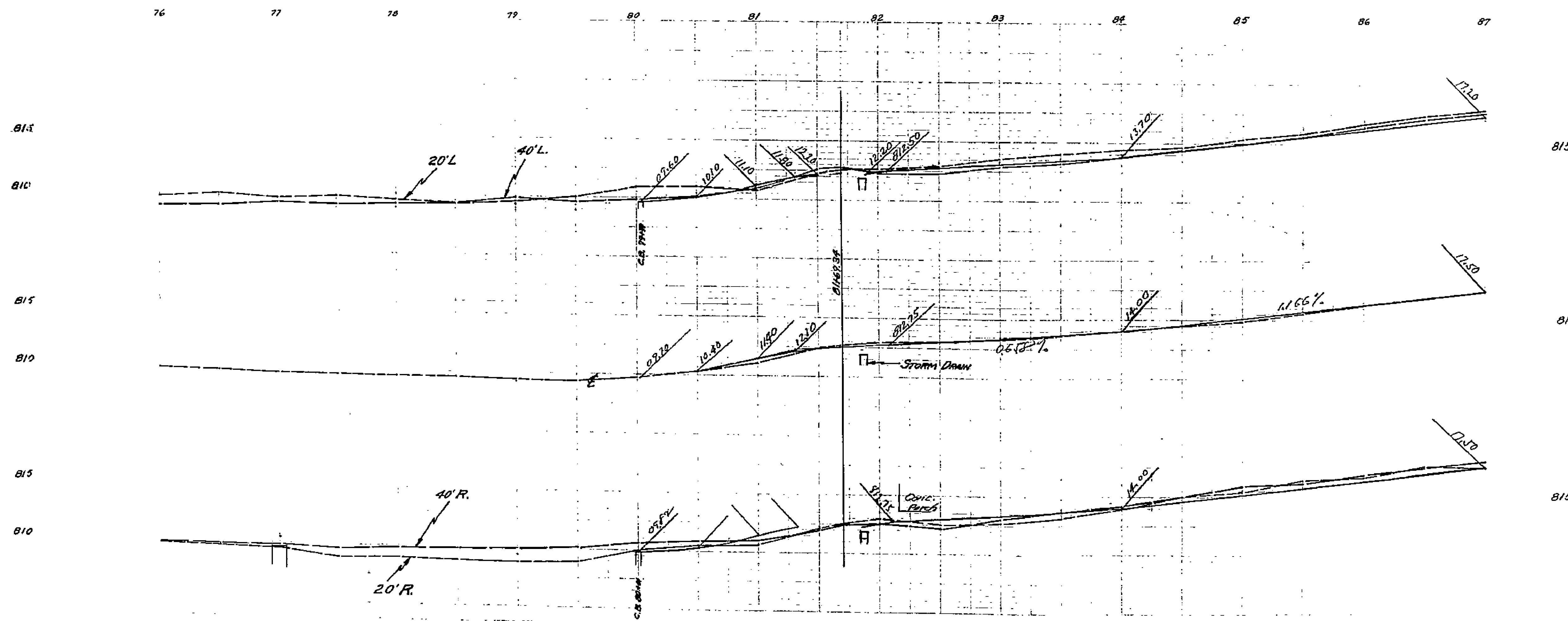
RIVERSIDE, CALIFORNIA
 SCALES H.R. 1" = 50'
 VERT 1" = 5'
 OCTOBER 1954

APPROVED: *M.H. Irvine*
 M.H. IRVINE - REG. C.E. No. 3011
 CITY ENGINEER



F.B. 555-56, 549-73

B.M. E.L. 812.35 1/4 LD IN S. COR. CONC. M.H.
 E. SIDE MONROE 170' N. OF INDIANA
 F.B. 555-61



1492