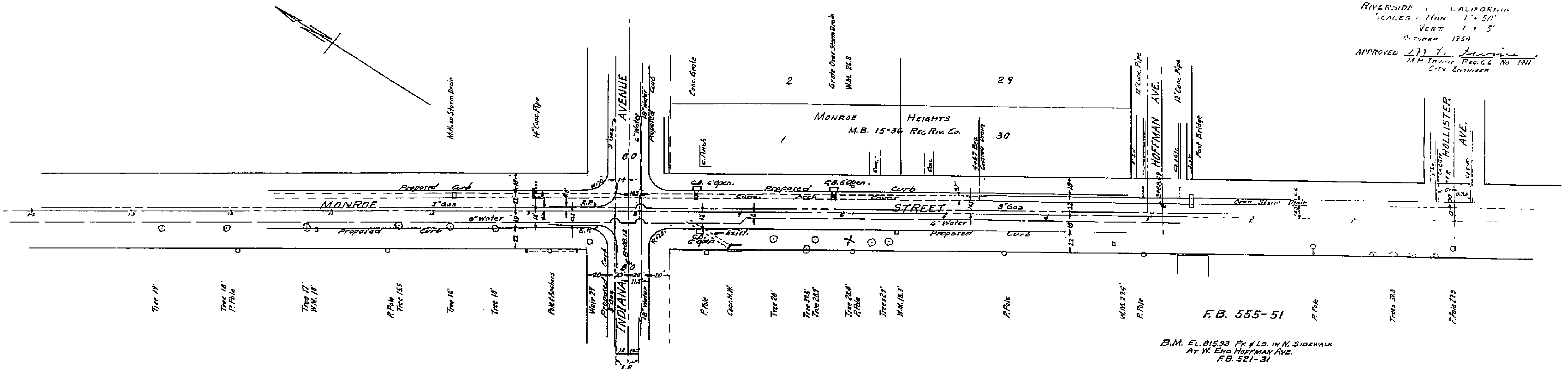


PLAN No. 1492-A
 GRADES FOR CURBS & GUTTERS
 500 FT. EACH WAY FROM INDIANA AVE.

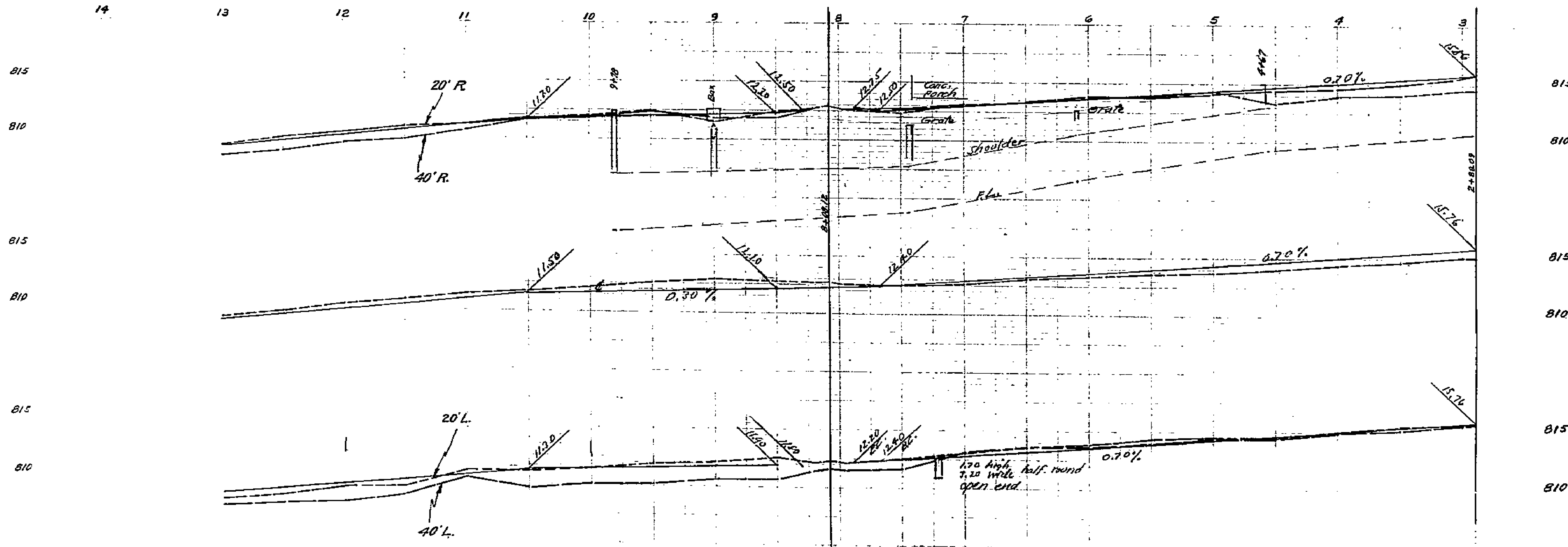
ON
MONROE STREET

RIVERSIDE, CALIFORNIA
 SCALES - HOR. 1" = 50'
 VERT. 1" = 5'
 OCTOBER 1954

APPROVED *L.H. Indiana*
 L.H. INDIANA - REG. CE. NO. 3011
 CITY ENGINEER



F.B. 555-51
 B.M. EL. 815.93 Pk & LD. IN N. SIDEWALK
 AT W. END HOFFMAN AVZ.
 F.B. 521-31



1492A