

Street and Curb Grades
 JURUPA GRANDE HOMES
 UNIT NO. 2
 PROFILES & PLAN
 Donald J. McKee, Lic. Surveyor.

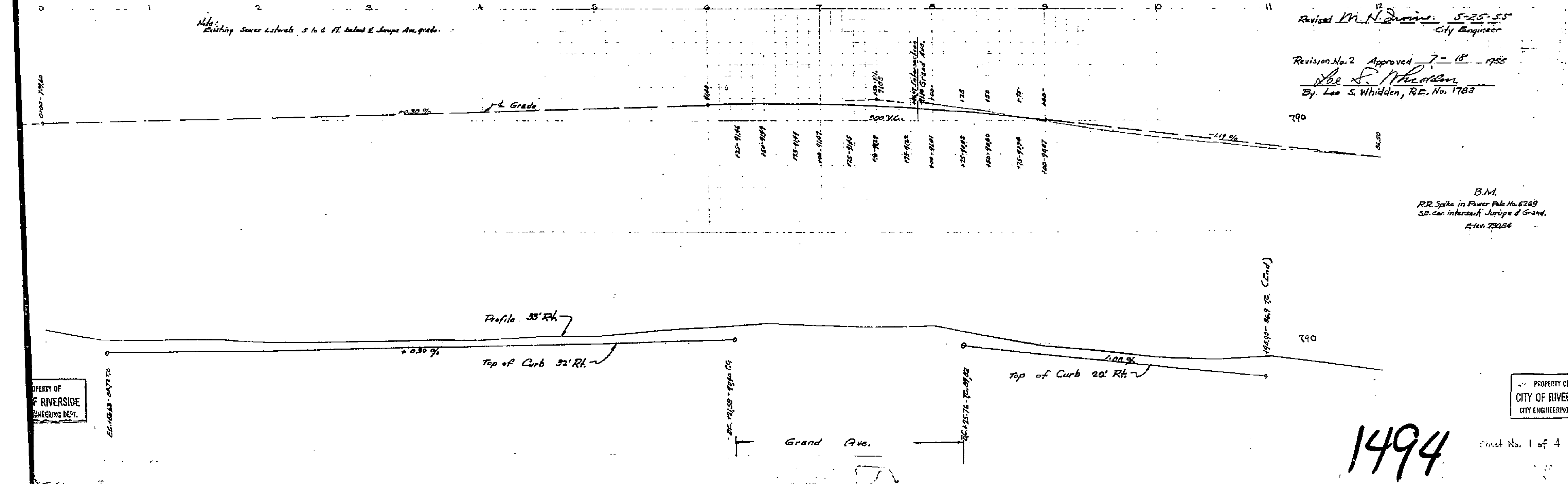
Approved Nov. 10 1954
M. H. Irvine
 M.H. Irvine, City Engineer

Revised M. H. Irvine 5-25-55
 City Engineer

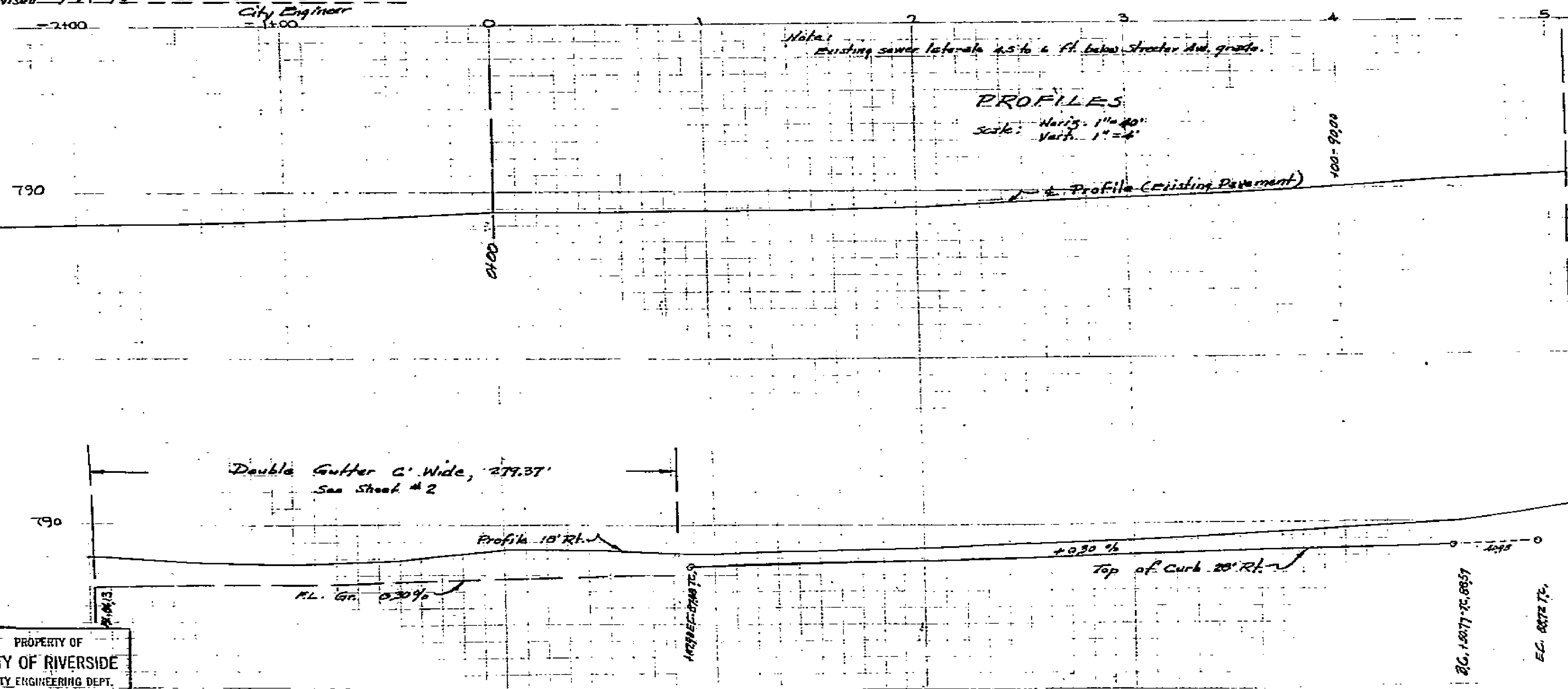
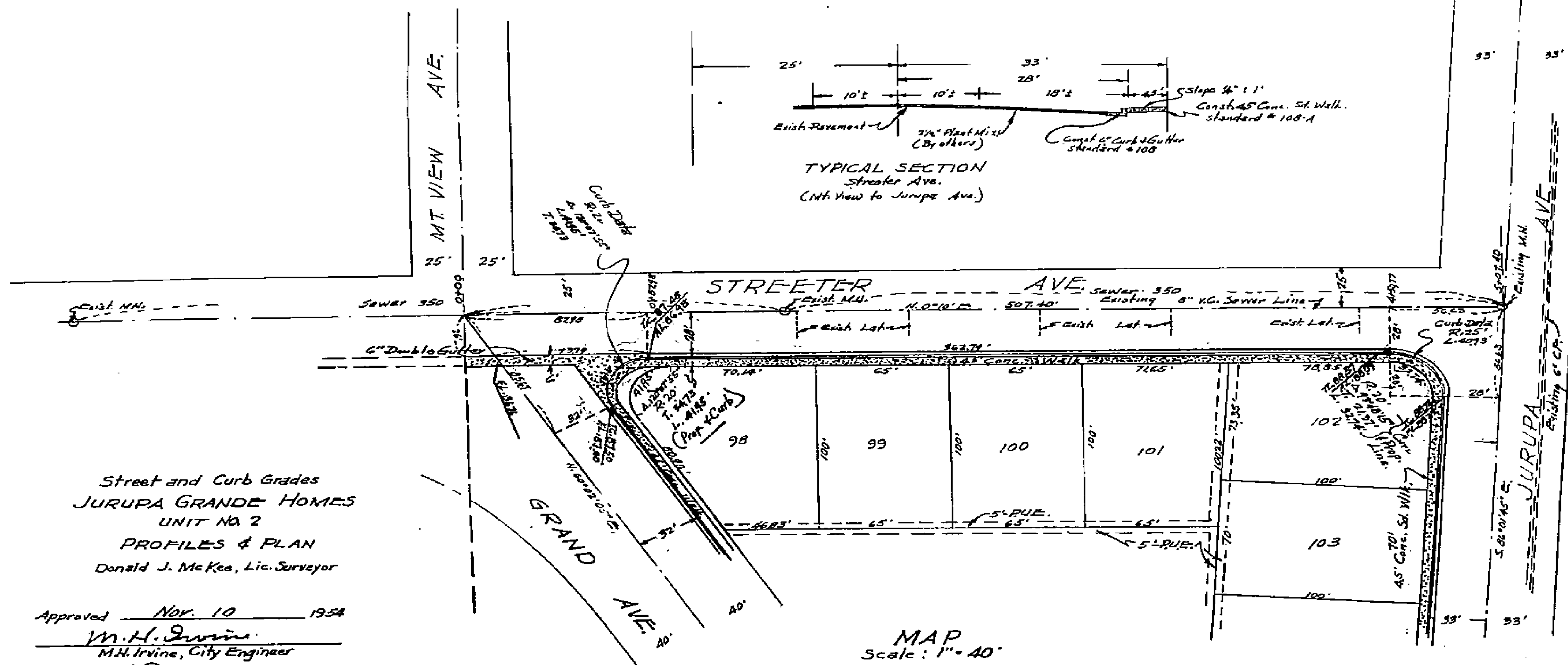
Revision No. 2 Approved 7-18 1955
Lee S. Whidden
 By Lee S. Whidden, R.E. No. 1783

Note:
 Existing Sewer Laterals 5 to 6 ft. below & slope as grade.

B.M.
 RR. Spike in Power Pole No. 6269
 SB. cor. intersect Jurupa & Grand.
 ELEV. 730.84

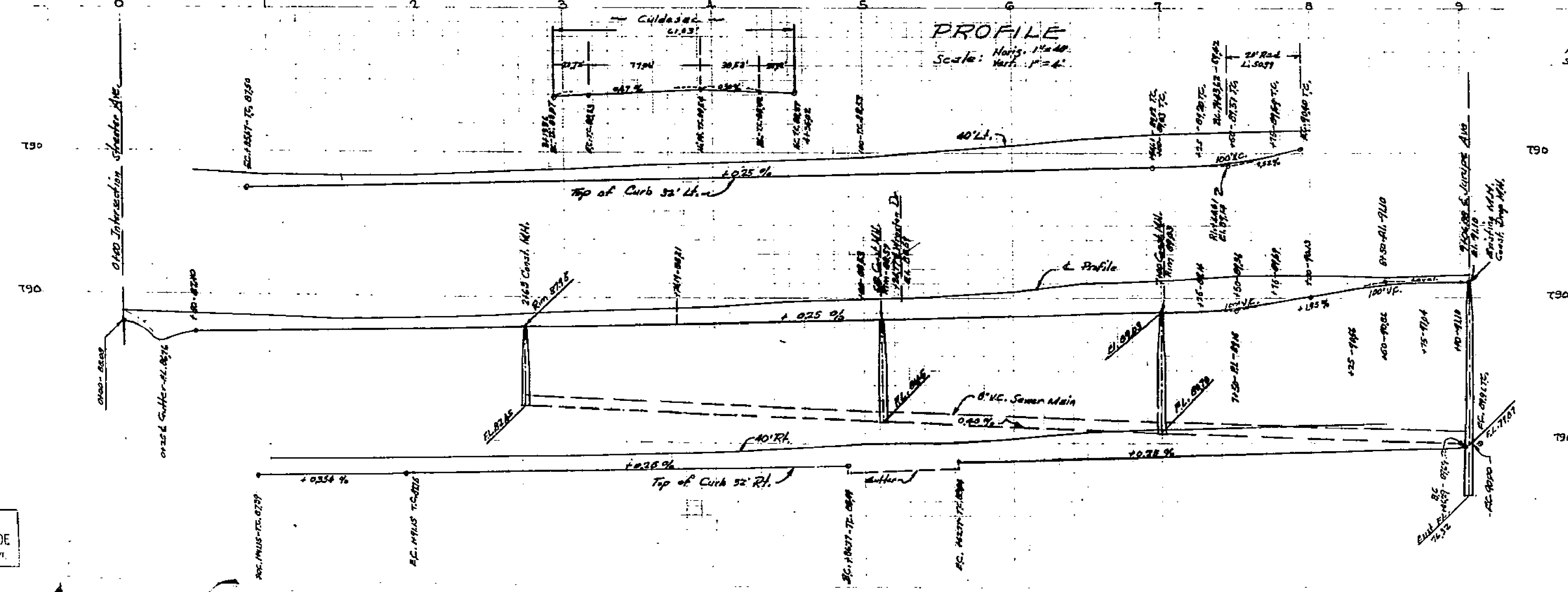
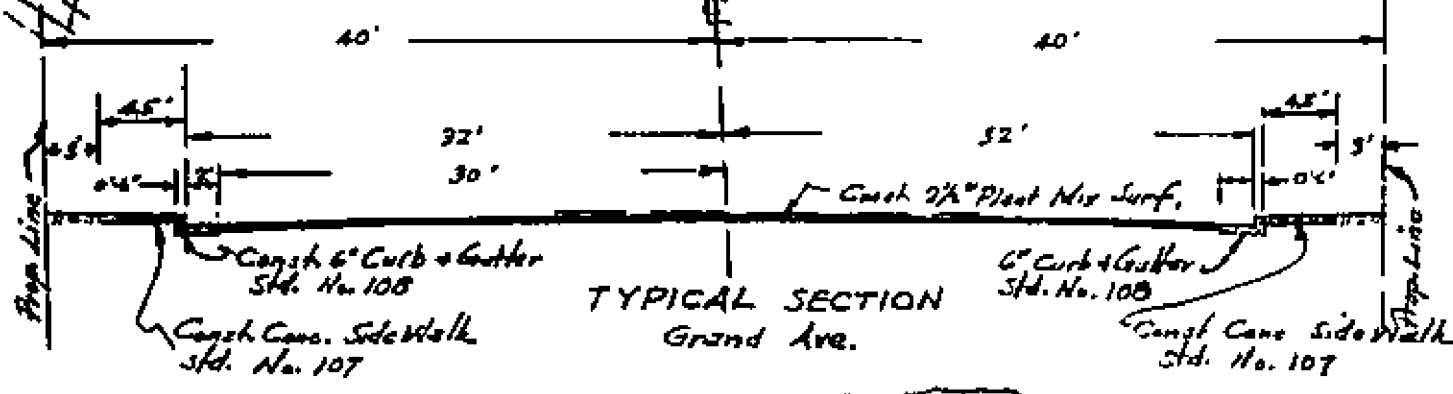
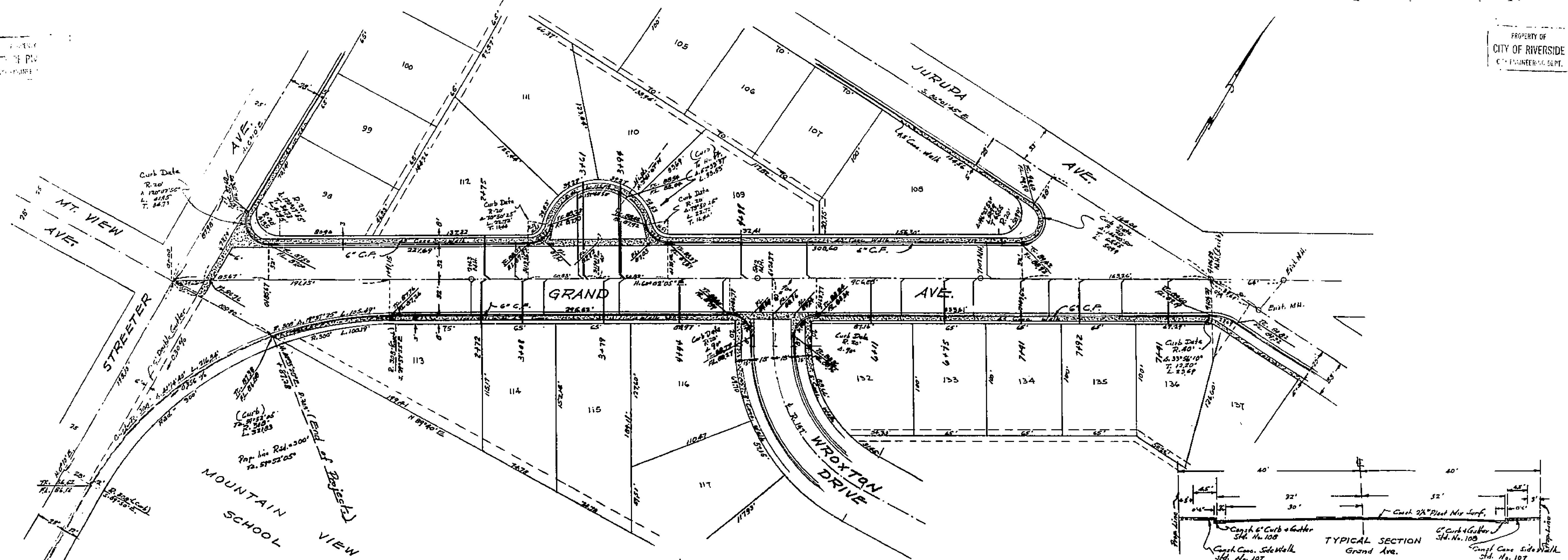


1494



1494

B.M.
RR. Spike in Power Pole No. 6269
S.E. Cor. Intersect. Jurupa & Grand
Elev. 790.84



B.M.
RR. Spike in Power Pole No. 2249
SE. Cor. Intersect. Jurupa & Grand
Elev. 790.84

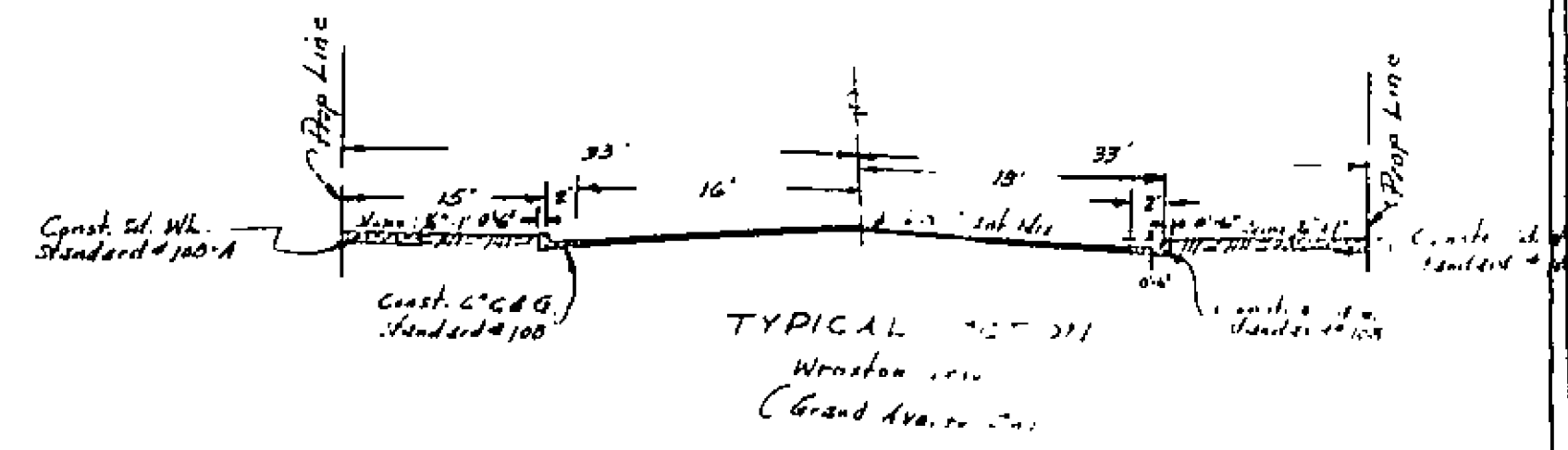
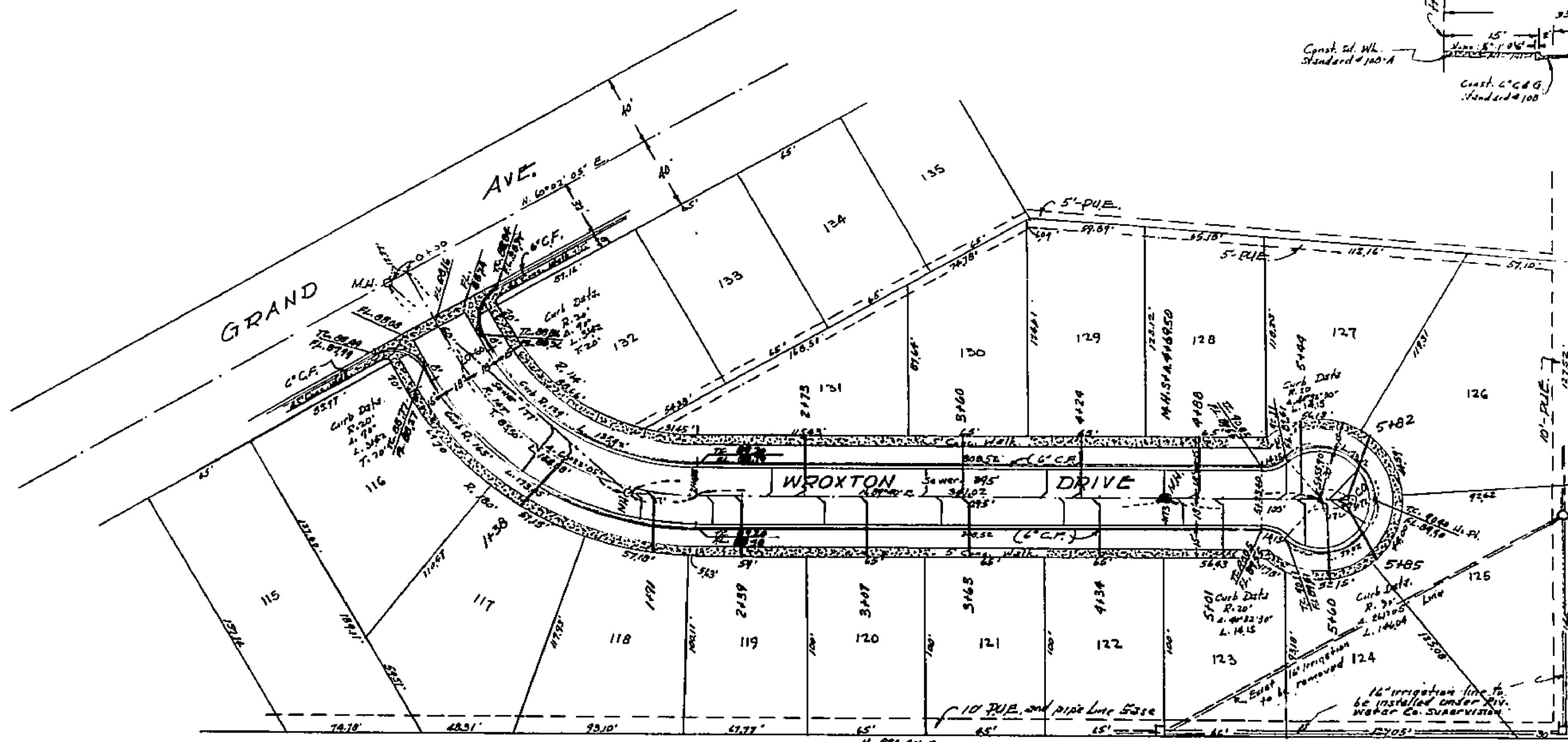
Street and Curb Grades
JURUPA GRANDE HOMES
Unit No. 2
PROFILES & PLAN
Donald J. McKea, Lic. Surveyor

Approved - Nov. 10 - 1934
M. H. Irvine, City Engineer
Revised M. H. Irvine 5-25-35
City Engineer

PROPERTY OF
CITY OF RIVERSIDE
CITY ENGINEERING DEPT.

Street and Curb Grades
JURUPA GRANDE HOMES
UNIT NO. 2
PROFILES & PLAN
Donald J. McKee, Lic., Surveyor

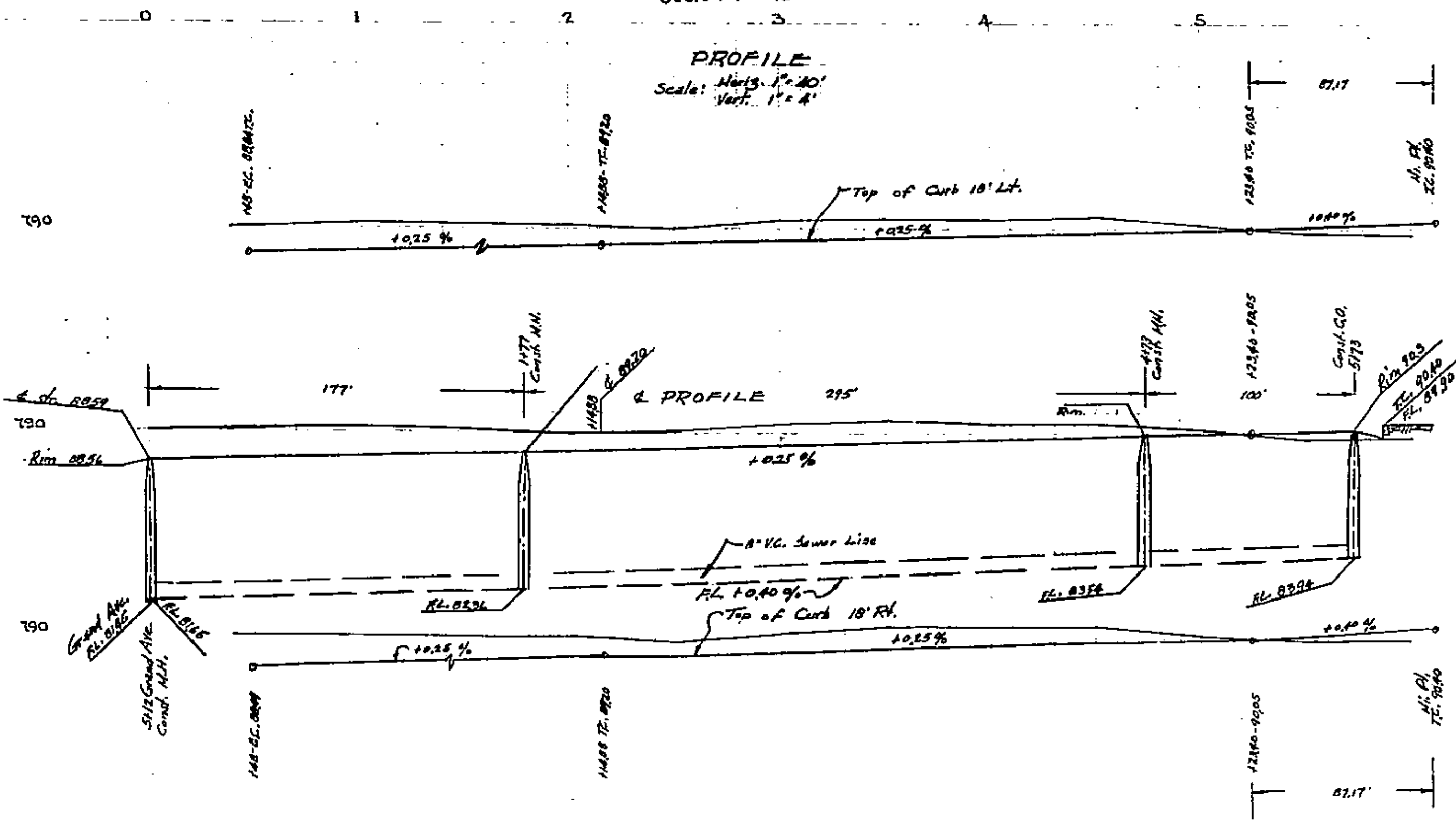
Approved Nov. 10 1954
M. H. Irvine
M. H. Irvine, City Engineer
Revised *M. H. Irvine* 5-25-55
City Engineer



PROPERTY OF
CITY OF RIVERSIDE
CITY ENGINEERING DEPT.

MAP
Scale: 1" = 40'

PROFILE
Scale: Horiz. 1" = 40'
Vert. 1" = 4'



R.R. Spike in Power Pole No. 6269
S.E. Cor. Intersect. Jurupa & Grand
Elev. 792.84

1494

PROPERTY OF
CITY OF RIVERSIDE
CITY ENGINEERING DEPT.

PROPERTY OF
CITY OF RIVERSIDE
CITY ENGINEERING DEPT.

Sheet No. 3 of 4