

PLAN No. 1497  
 SHOWING SEWER EXTENSION  
 IN ALLEY & EASEMENT SOUTH OF  
 STRONG ST. & E. OF MAIN ST.  
 RIVERSIDE, CALIFORNIA  
 SCALES: HOR. 1" = 50'  
 VER. 1" = 5'  
 DEC. 1954

APPROVED: *M.H. Irvine*  
 M.H. IRVINE - Reg. C.E. No. 3011  
 CITY ENGINEER

B.M. EL. 817.16 SPK & LD IN N. CURB  
 OF STRONG ST. HOR. 3675

F.B. 398-40 546-74

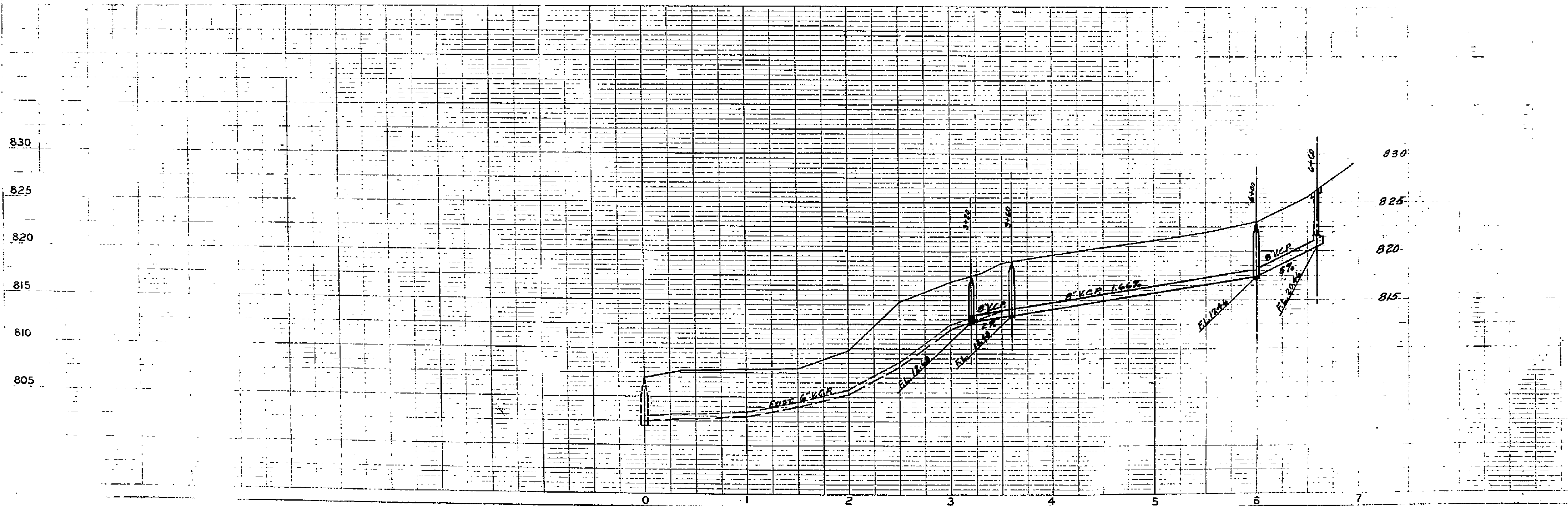
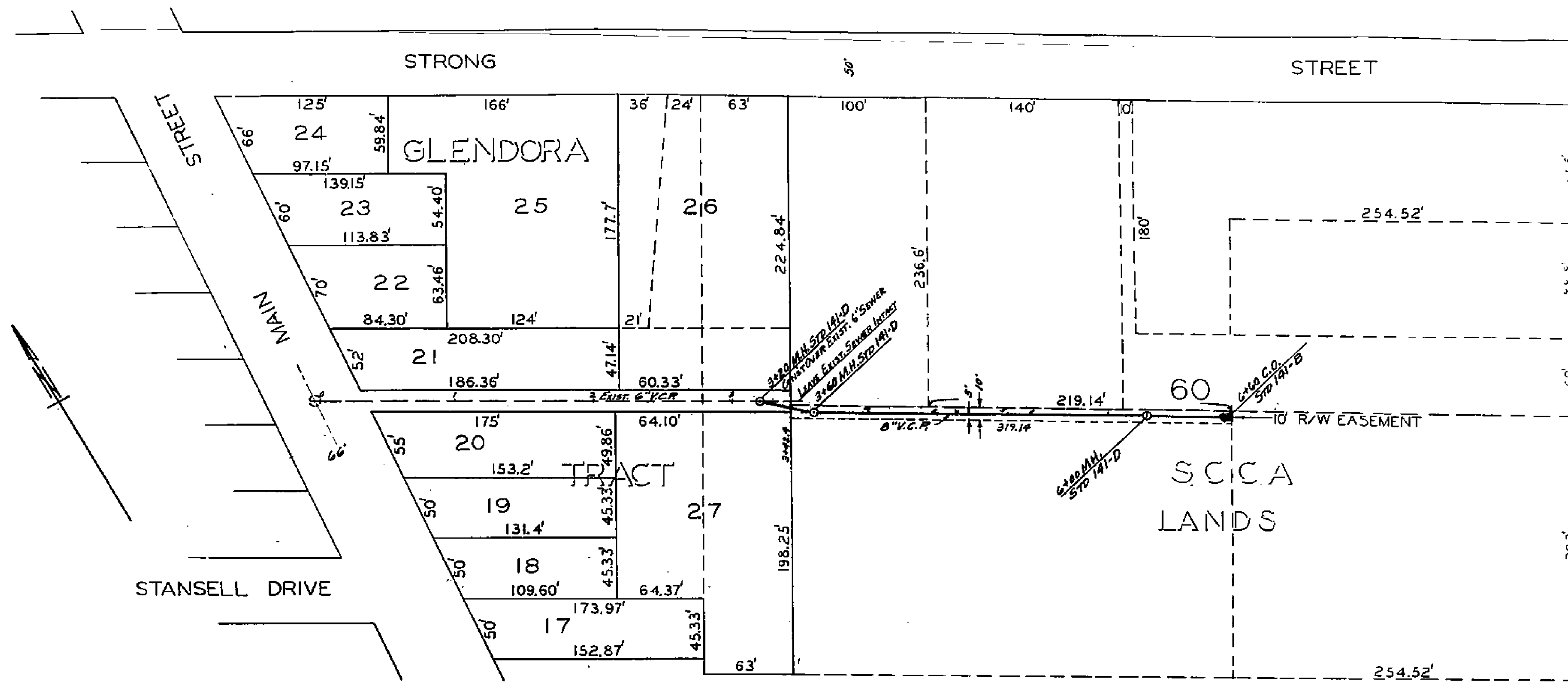


PLATE 1 - PLAN - PROFILE - P.L.S.  
 CLEARPRINT PAPER CO. S.F. CAL.  
 No. 100013

1497