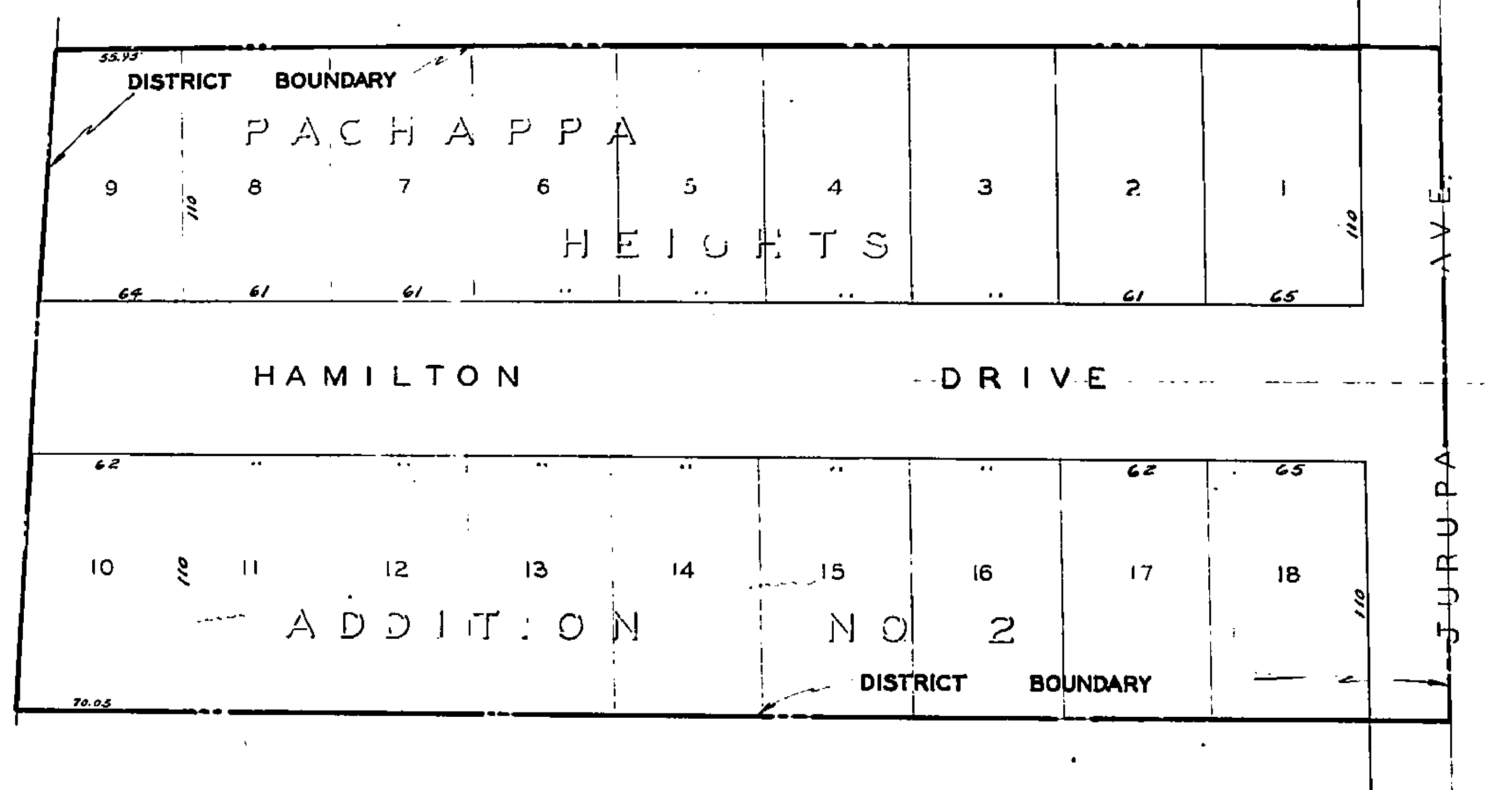


A-1521

1501-A



SCALE: 1" = 50'

MAP NO. 1501-A
 SHOWING THE LANDS INCLUDED WITHIN
 THE ASSESSMENT DISTRICT TO BE BENEFITED
 BY THE CONSTRUCTION OF CONCRETE SIDEWALKS
 IN THE MATTER OF

HAMILTON DRIVE IMPROVEMENT DISTRICT

RIVERSIDE CALIFORNIA
 DISTRICT BOUNDARY SHOWN THUS -----
 JAN. 1955

APPROVED: _____
 M. H. IRVINE - REG. C.E. NO. 3011
 CITY ENGINEER

A-1521

1501-A

1501A

ASSESSMENT NO. 403
DIAGRAM

EXHIBITING HAMILTON DRIVE IMPROVEMENT DISTRICT

IN THE CITY OF RIVERSIDE ON WHICH WORK HAS BEEN DONE UNDER THE OFFICIAL
CONTRACT OF THE SUPERINTENDENT OF STREETS OF SAID CITY WITH
CARL L. FREJD
MAY 27th DATED 1955
FOR THE CONSTRUCTION OF CONCRETE SIDEWALKS

AS IS MORE PARTICULARLY DESCRIBED IN SAID CONTRACT TO WHICH REFERENCE
IS HEREBY MADE FOR FURTHER PARTICULARS; SAID DIAGRAM ALSO SHOWS THE
RELATIVE LOCATION OF EACH LOT PORTION OF LOT PIECE OR PARCEL OF LAND
ASSESSED FOR THE WORK DONE NUMBERED IN CIRCLES TO CORRESPOND TO THE
RED INK NUMBERS IN THE ASSESSMENT
HEREIN FIGURES NEXT TO PROPERTY LINES SHOW LENGTH OF SAID LINES IN FEET.
THE MARK (1) MEANS FEET. PROPERTY LINES THAT DIFFER FROM THE RECORDED
SUBDIVISIONS ARE SHOWN BY BROKEN LINES. THE DISTRICT BENEFITED IS
BOUNDED BY A HEAVY DASHED LINE
PROPERTY COVERED BY THIS ASSESSMENT IS SHOWN ON THE FOLLOWING
RECORDED MAPS:

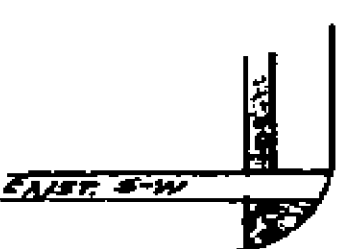
PACHAPPA HEIGHT ADDITION NO. 2 M.B. 24-19 REC. RIV. CO.

HEREIN THE LEGEND OF THE DIFFERENT KINDS OF WORK
PERFORMED IS SHOWN AS FOLLOWS:

SIDEWALK SHOWN THUS



COR. DETAIL



4907 SQ. FT.

CITY ENGINEER OF THE CITY OF RIVERSIDE
THE FOLLOWING IS A STATEMENT OF AMOUNTS
OF DIFFERENT KINDS OF WORK DONE BY
CARL L. FREJD UNDER
CONTRACT DATED MAY 27th 1955 PURSUANT TO
RESOLUTION OF INTENTION NO. 8559 ADOPTED BY THE
CITY COUNCIL OF THE CITY OF RIVERSIDE ON THE
15th DAY OF FEBRUARY 1955

AT SAID CITY OF RIVERSIDE THIS 21st DAY OF JUNE 1955

CITY ENGINEER
OF THE CITY OF RIVERSIDE

I HEREBY CERTIFY THAT THE ABOVE WORK WAS DONE
IN ACCORDANCE WITH LINES AND GRADES FURNISHED BY ME
AND THAT THE DIAGRAM OF THE ASSESSMENT DISTRICT
FOR THE SAME IS CORRECT.

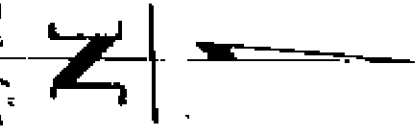
CITY ENGINEER
OF THE CITY OF RIVERSIDE

RECORDED AT 1 O'CLOCK P.M.
THIS 4 DAY OF AUGUST 1955

SUPERINTENDENT OF STREETS
OF THE CITY OF RIVERSIDE

1501 A

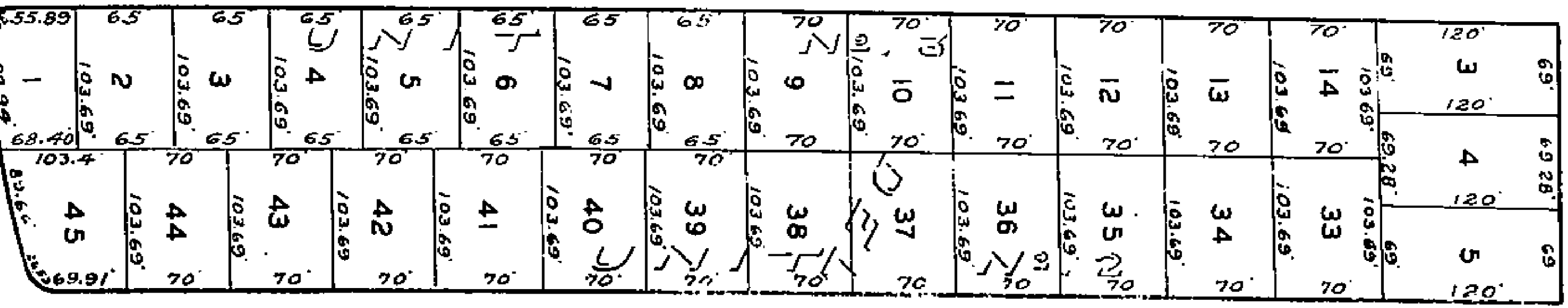
Scale 1"=100'



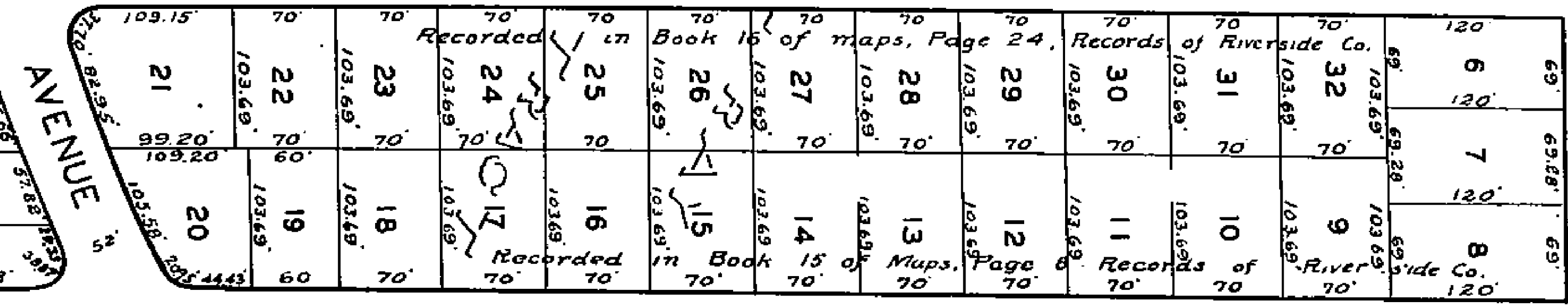
JURUPA AVENUE

See Sheet No. 105

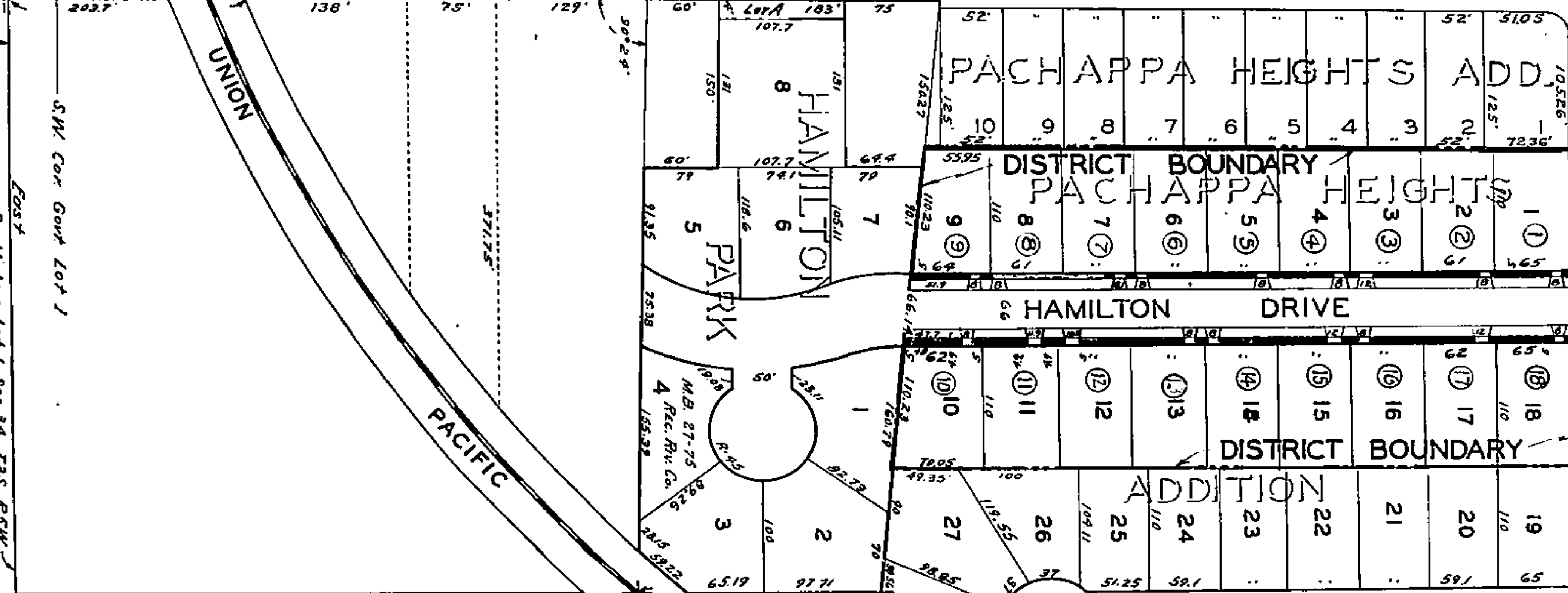
LAWSON WAY See Sheet No. 111



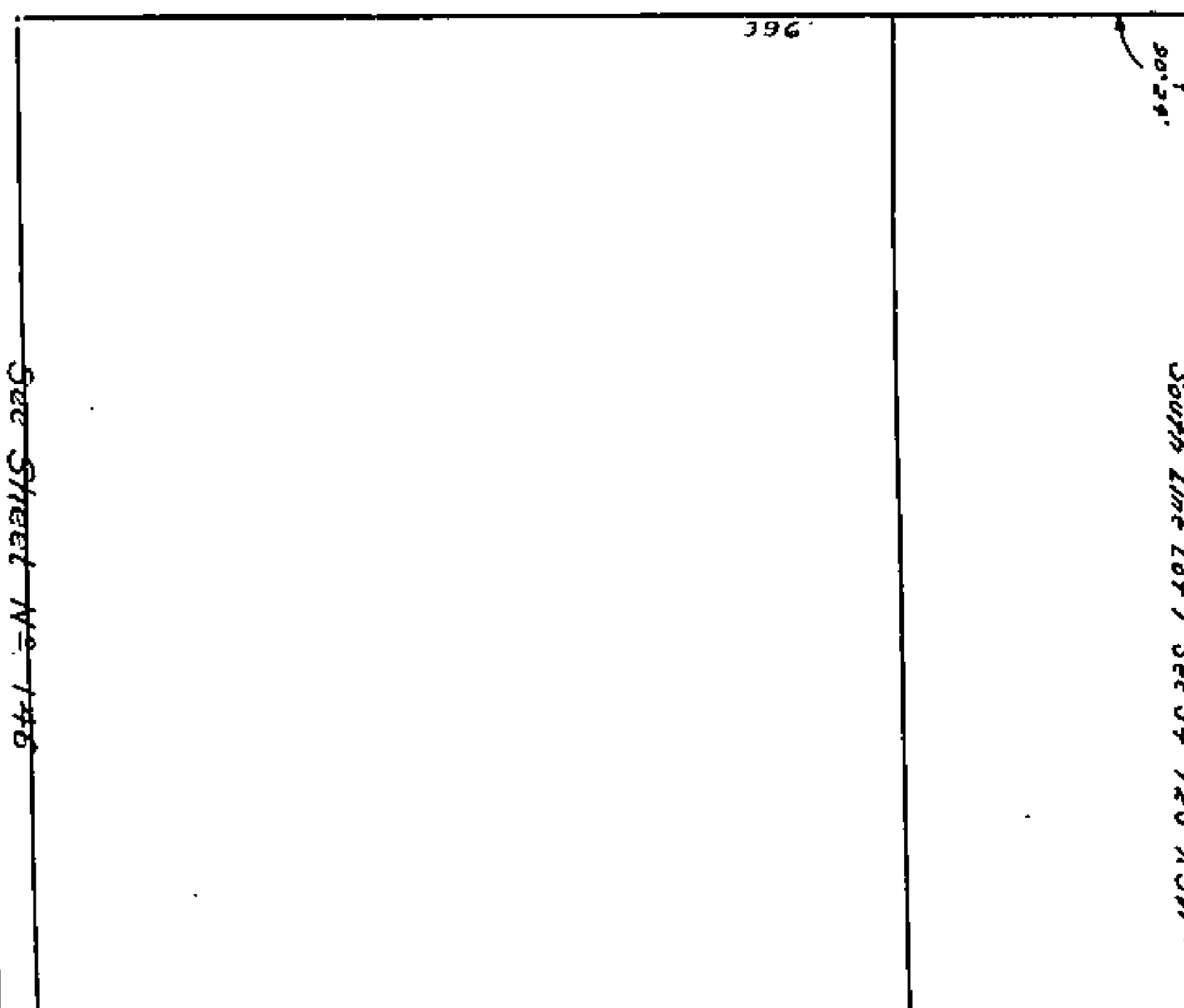
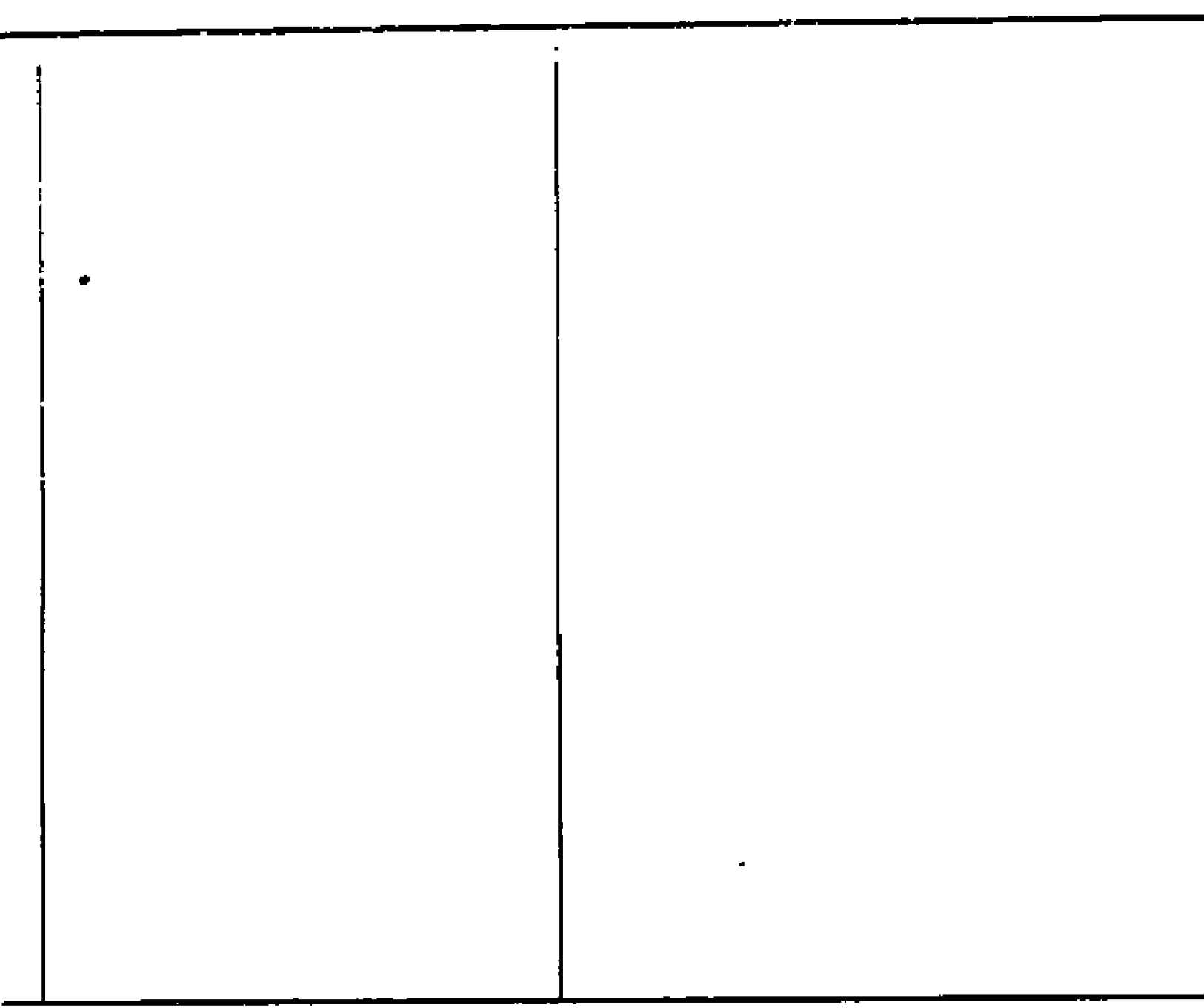
DEL-RAY COURT



RIVERSIDE AVENUE



See Sheet No. 103



1501A