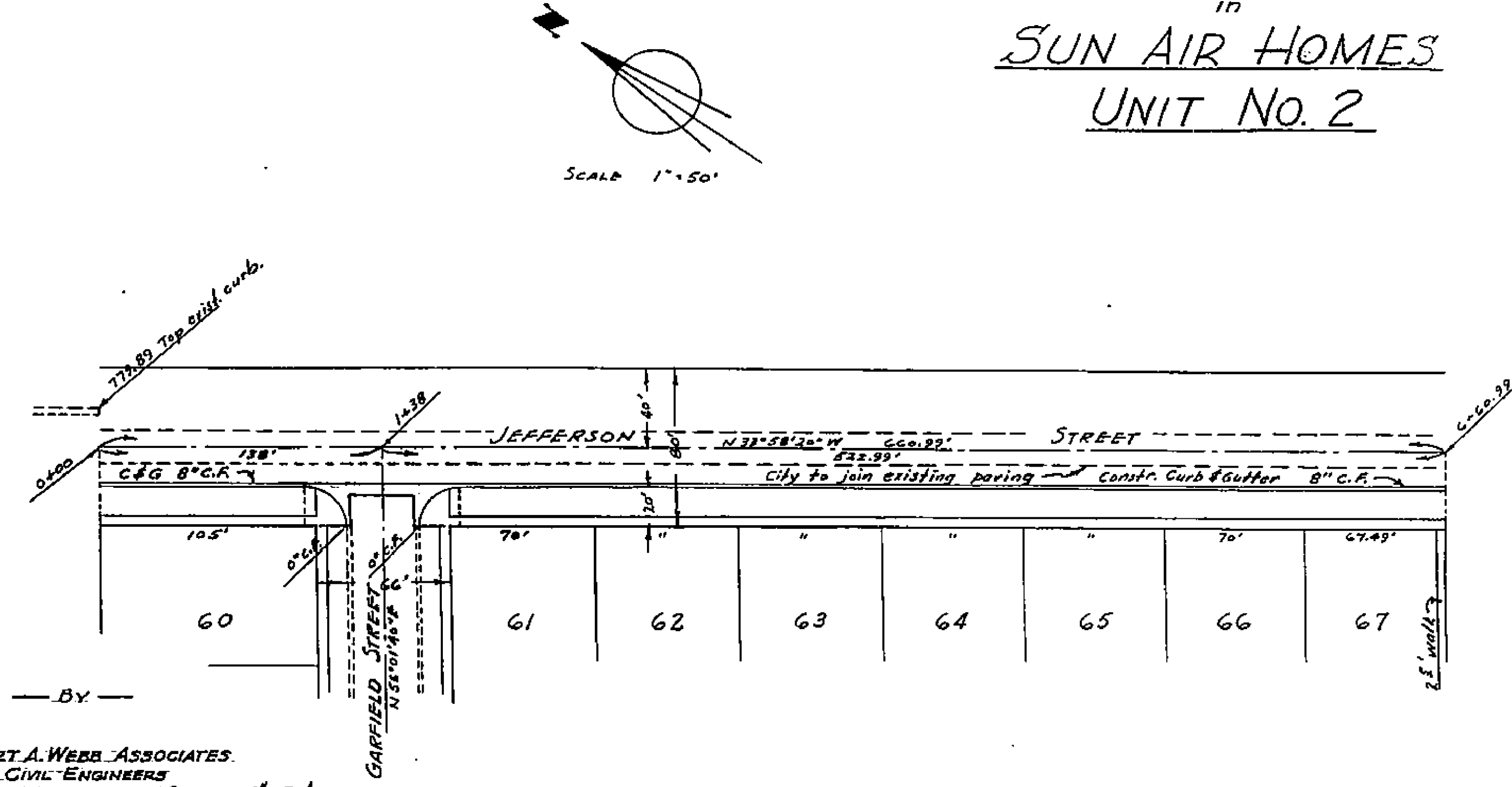
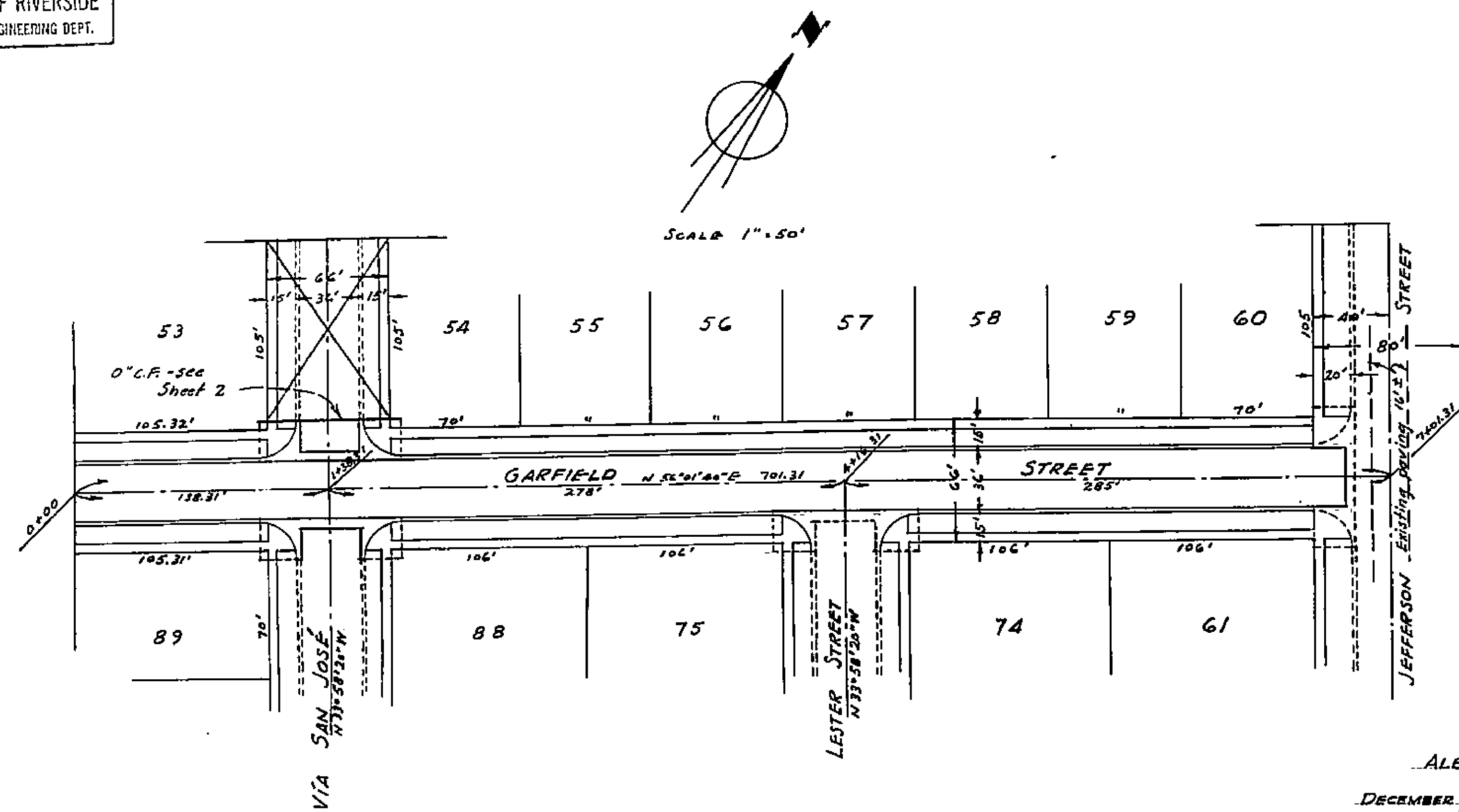


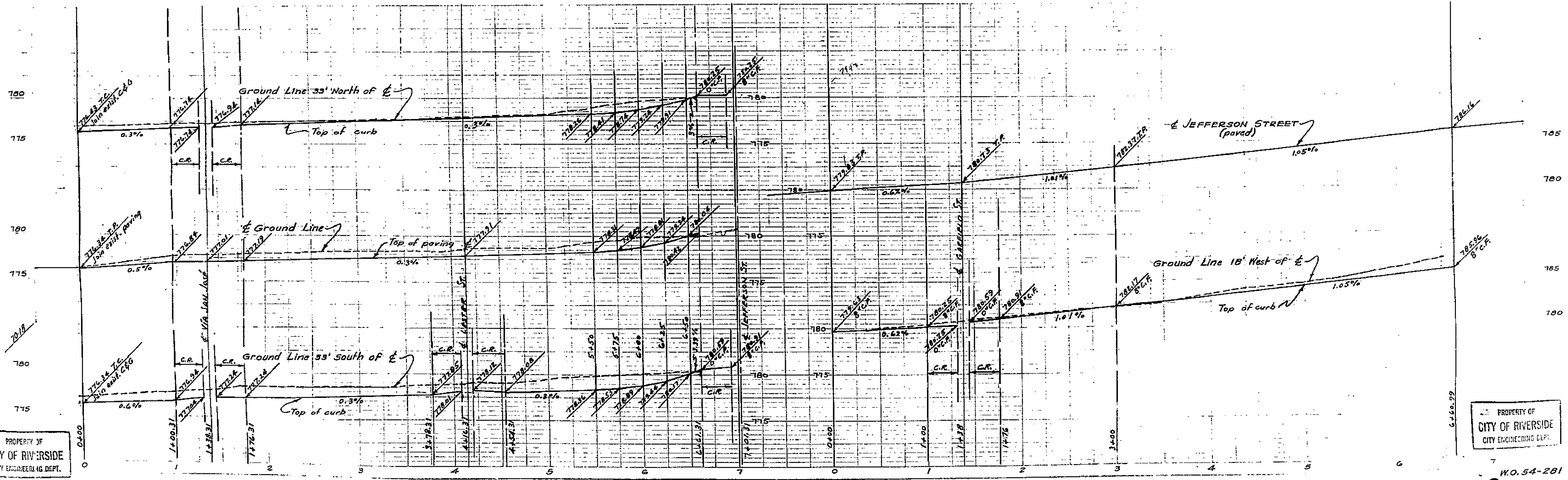
PROPERTY OF
CITY OF RIVERSIDE
CITY ENGINEERING DEPT.

SHEET 1 of 2 SHEETS
STREET PLANS & PROFILES
of
GARFIELD STREET AND JEFFERSON STREET
in
SUN AIR HOMES
UNIT No. 2



ALBERT A. WEBB ASSOCIATES
CIVIL ENGINEERS
DECEMBER, 1954
RIVERSIDE, CALIFORNIA.

Approved 2-21 1955
M. H. Swaine
City Engineer



PROPERTY OF
CITY OF RIVERSIDE
CITY ENGINEERING DEPT.

PROPERTY OF
CITY OF RIVERSIDE
CITY ENGINEERING DEPT.

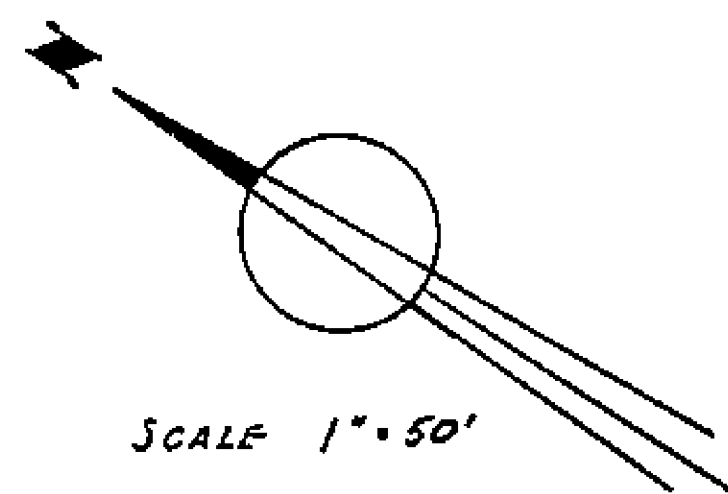
GARFIELD

JEFFERSON

1502A

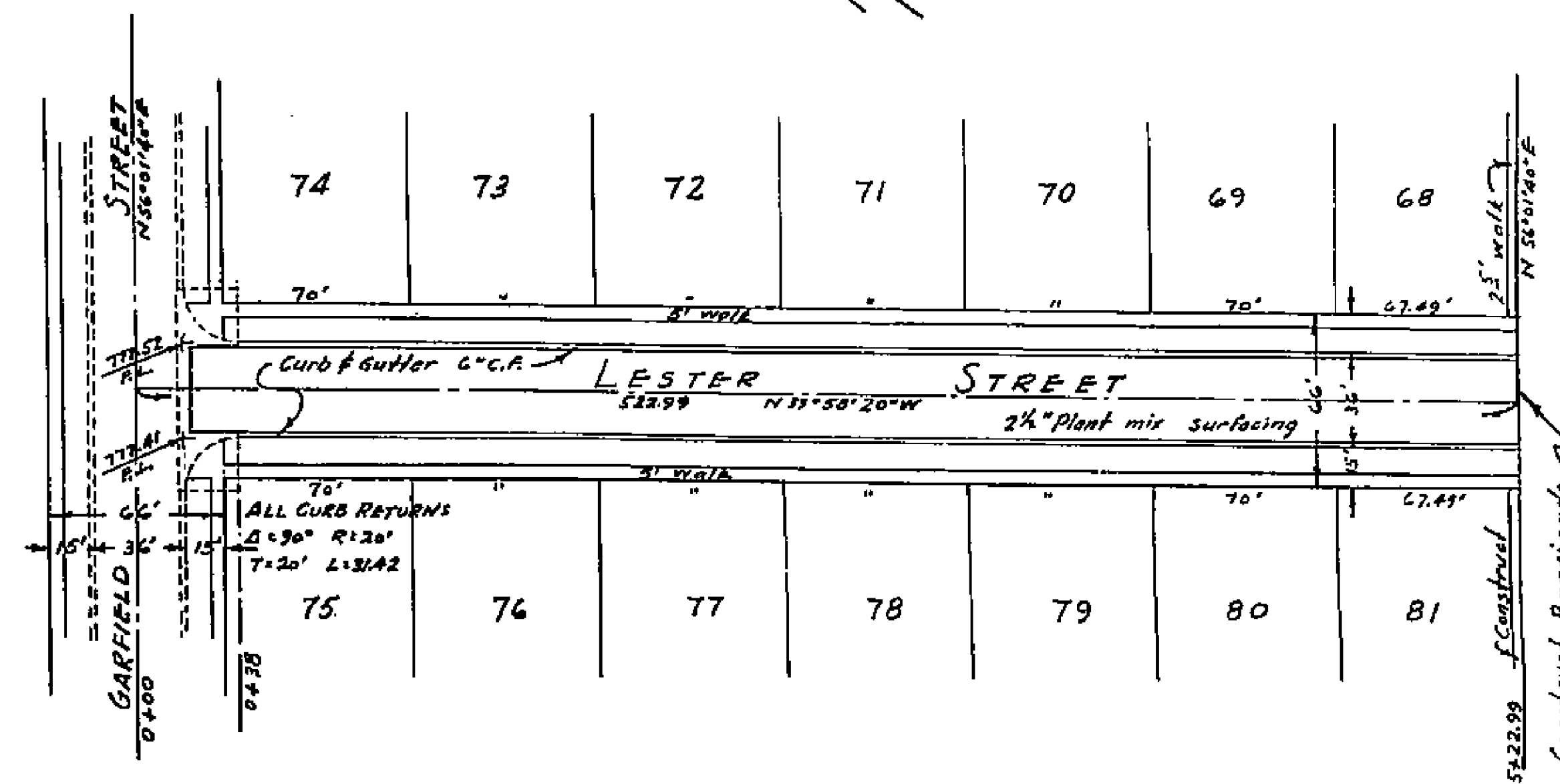
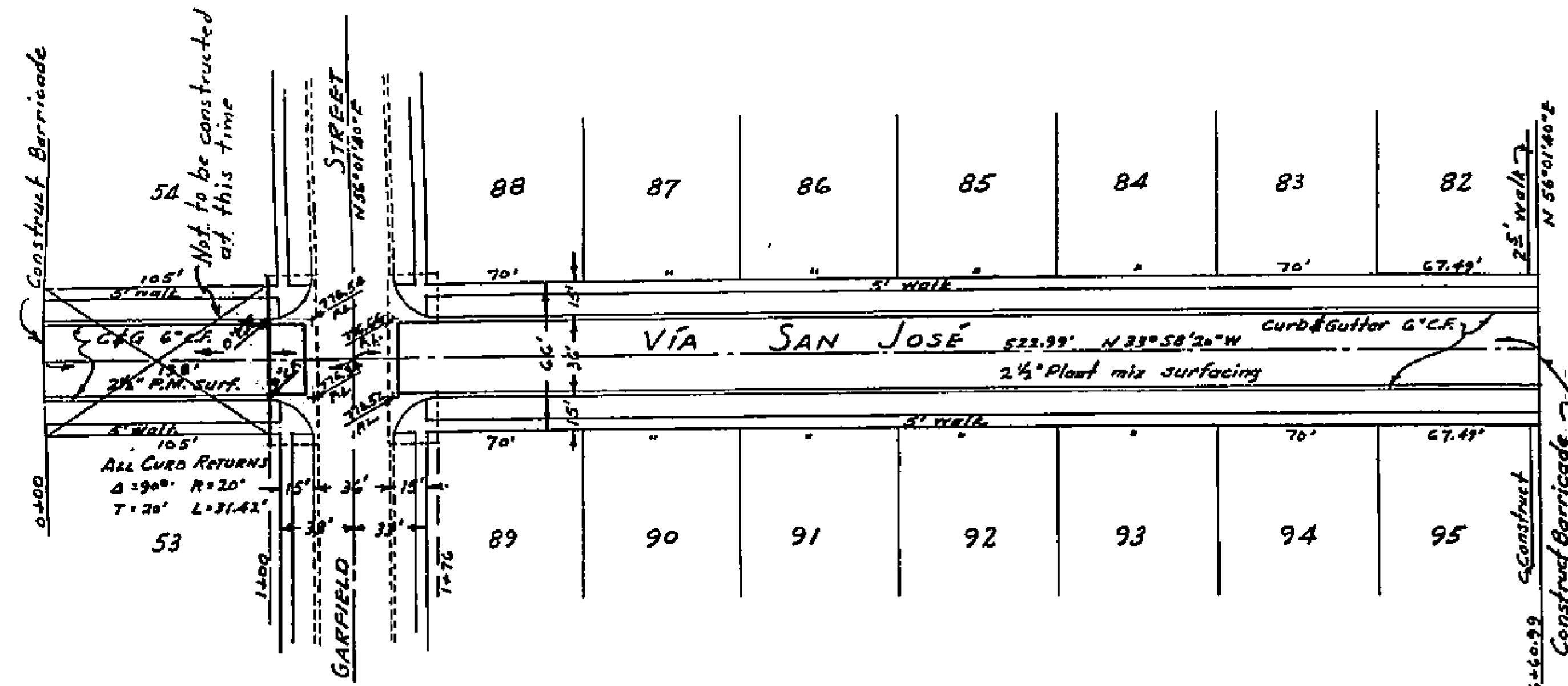
W.O. 54-281

PROPERTY OF
CITY OF RIVERSIDE
CITY ENGINEERING DEPT.



SHEET 2 of 2 SHEETS
STREET PLANS & PROFILES
of
VIA SAN JOSE AND LESTER STREET
in
SUN AIR HOMES
UNIT No. 2

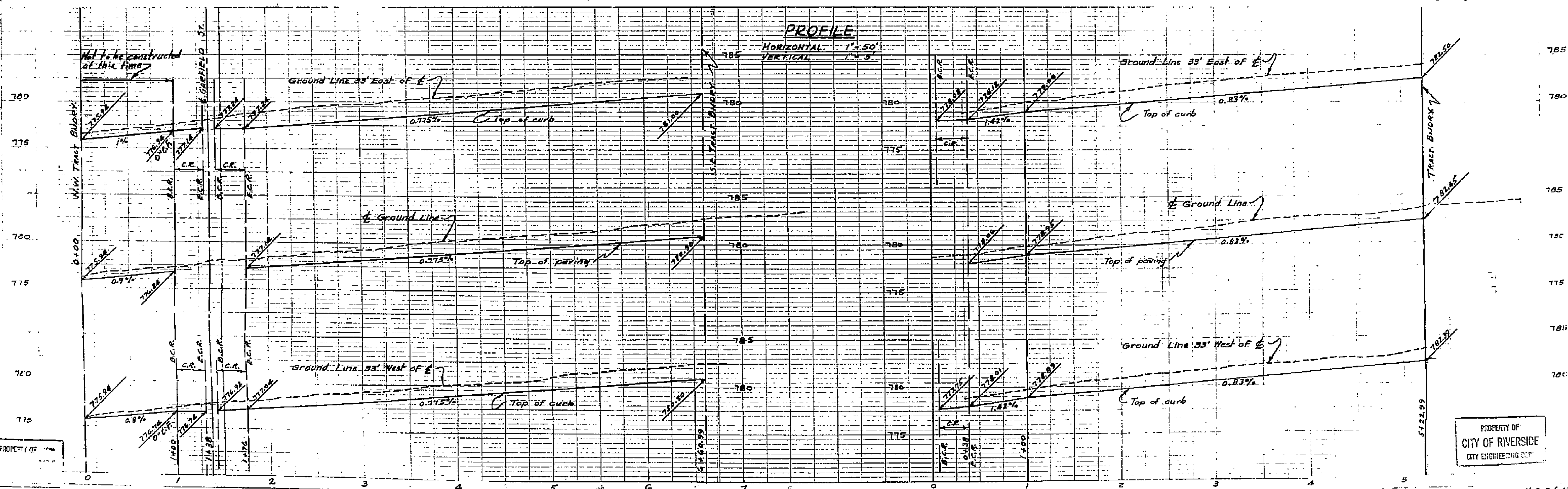
SCALE 1" = 50'



BY
ALBERT A. WEBB ASSOCIATES
CIVIL ENGINEERS
DECEMBER 1954 SCALE: 1" = 50'
RIVERSIDE, CALIFORNIA.

B.M. - L&T N.W. Curb Return Jefferson & Calif. Sts.
Elev. 771.47

Approved 2-21 1955
M. N. Swine
City Engineer



PROPERTY OF

PROPERTY OF
CITY OF RIVERSIDE
CITY ENGINEERING DEPT.

PLATE 1. PLAN, PROFILE, 1 A 5
CLEARPRINT PAPER CO. S. F. CAL.
No. 12606-1

PROPERTY OF
CITY OF RIVERSIDE
CITY ENGINEERING DEPT.

W.O. 54-281

1502A