

SCALE
VER. 1" = 50'
1" = 5'

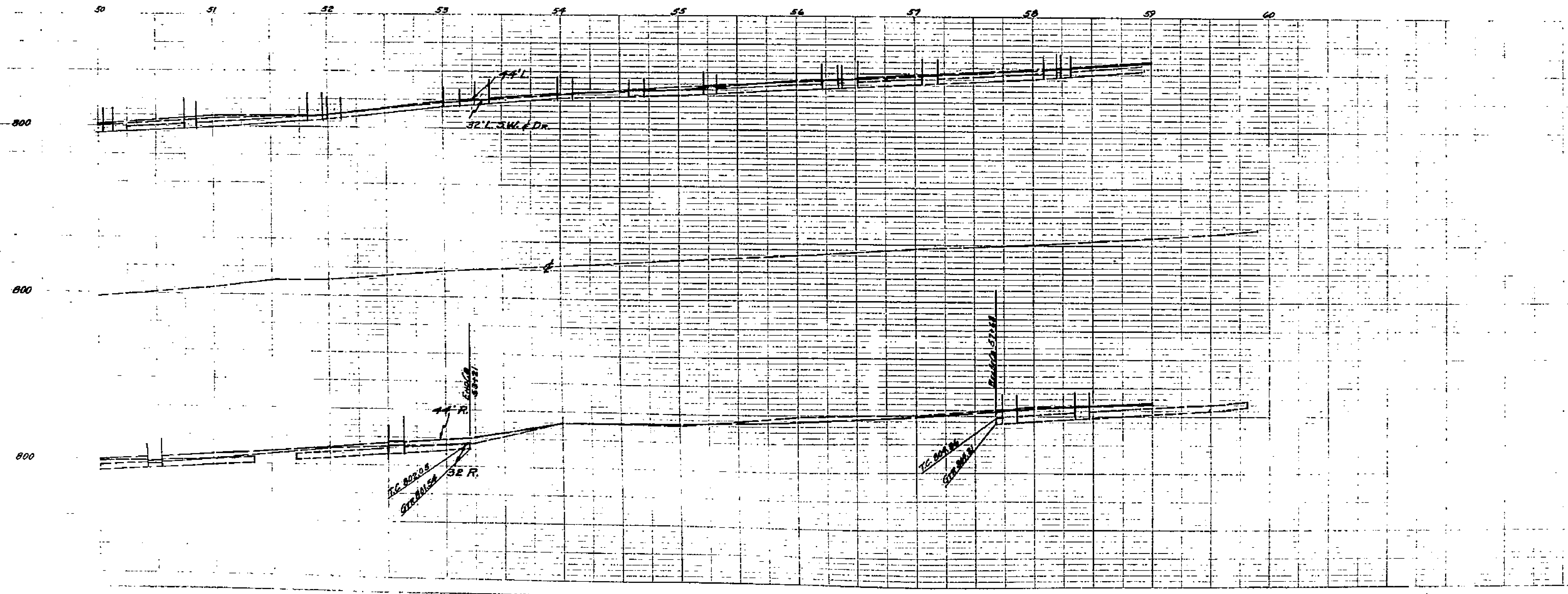
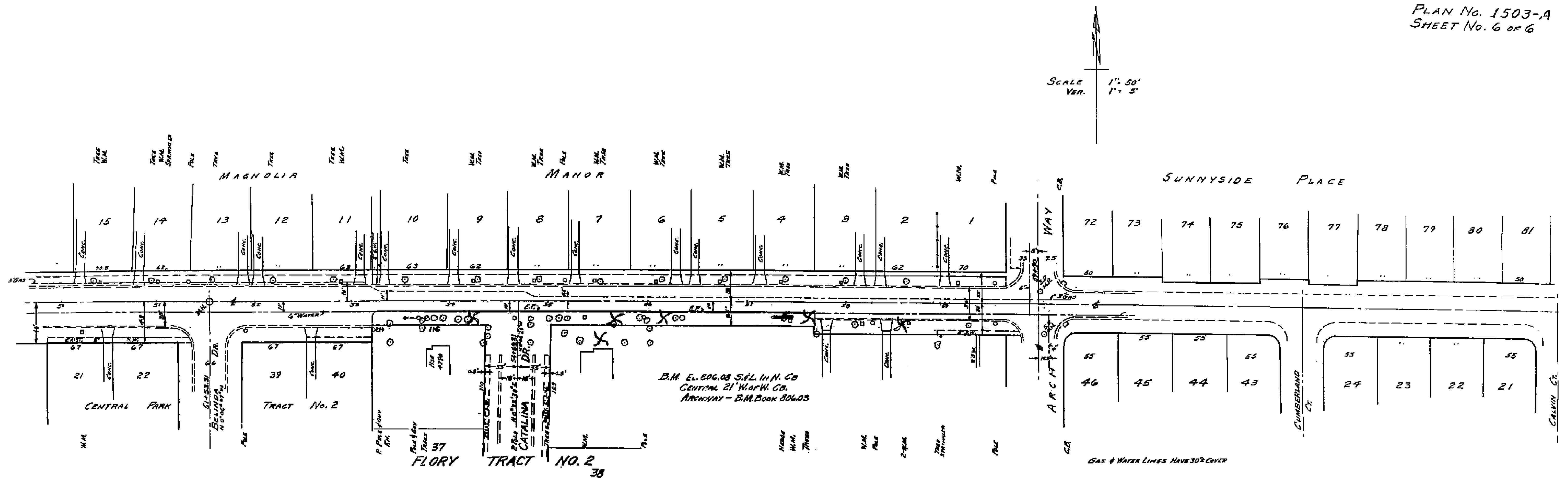


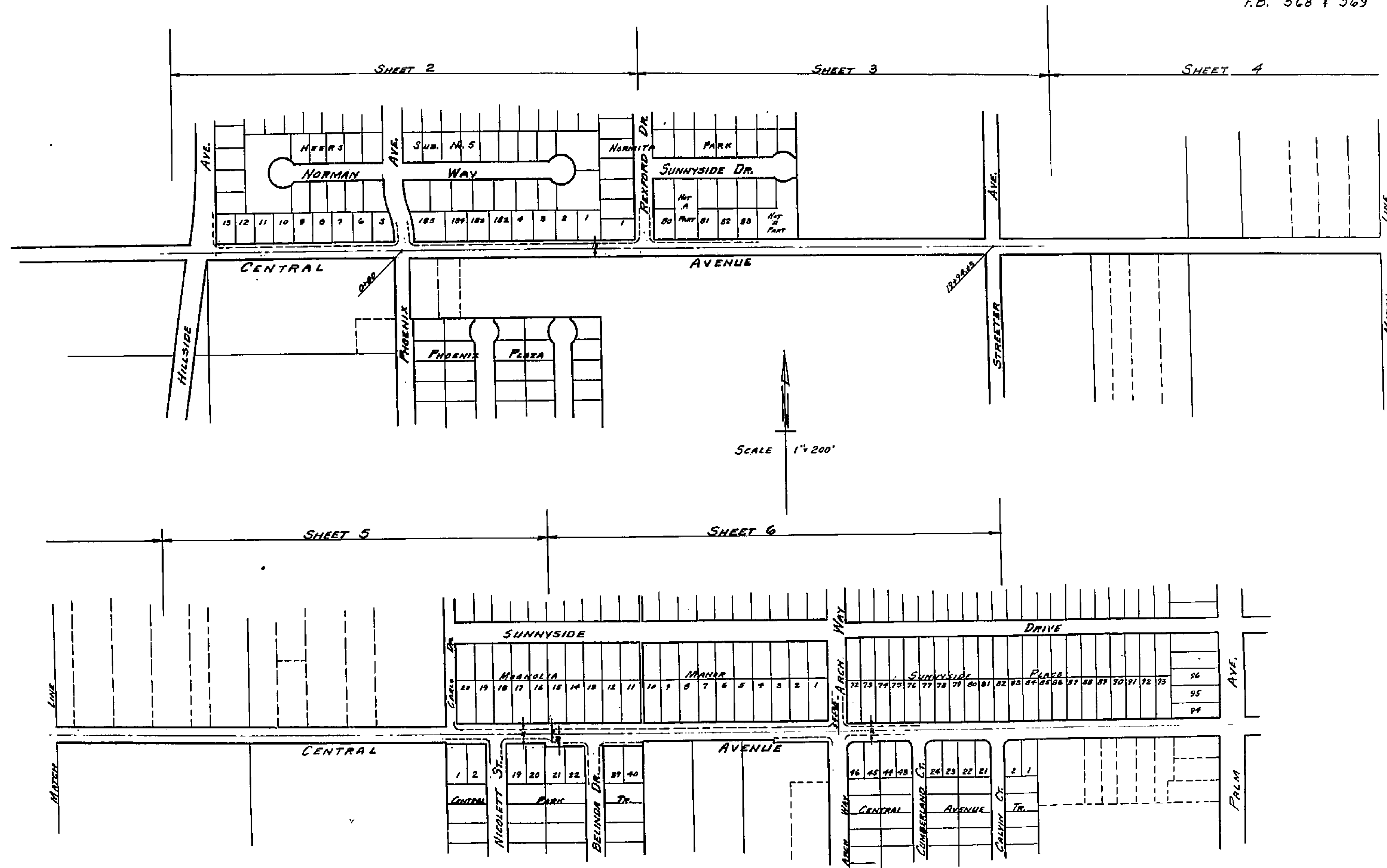
PLATE 1-PLAN, PROFILE OF A
CLEARPRINT PAPER CO., S.F. CAL.
NO. 100011

1503A

PLAN No. 1503-A SHEET No. 1 of 6
 FOR ESTABLISHING
 CURB GRADES ON
CENTRAL AVENUE
 BET. PHOENIX AVE. & ARCH WAY
 RIVERSIDE, CALIFORNIA
 JAN. 1955

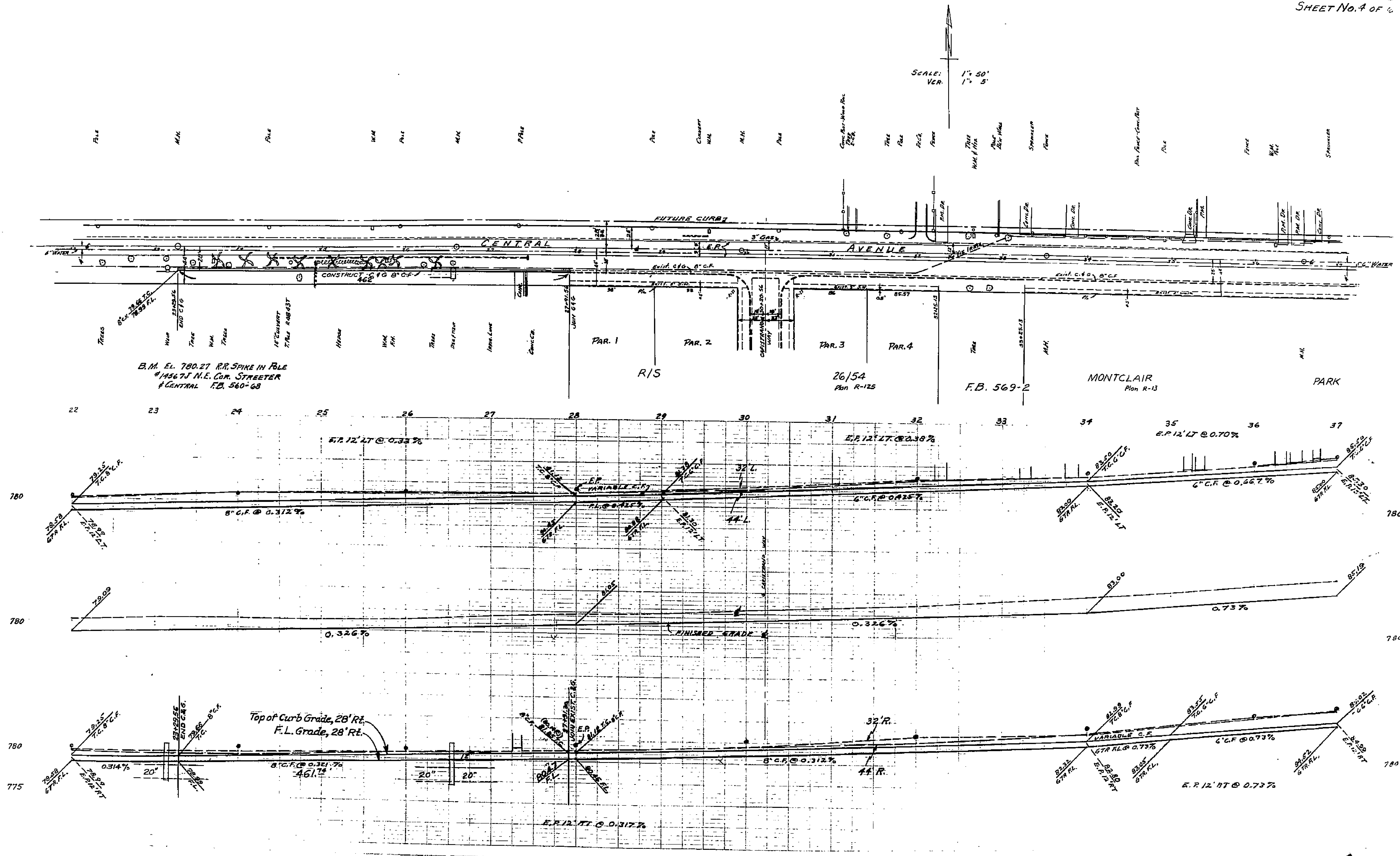
APPROVED: M.H. IRVING - REG. G.E. No. 3011
 CITY ENGINEER

F.B. 568 & 569



1503A

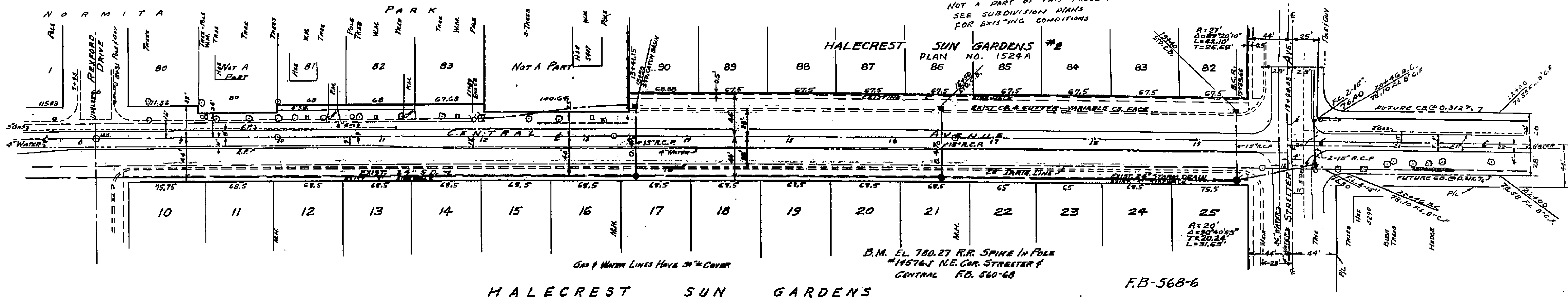
SCALE:
VER 1" = 5'
HOR 1" = 5'



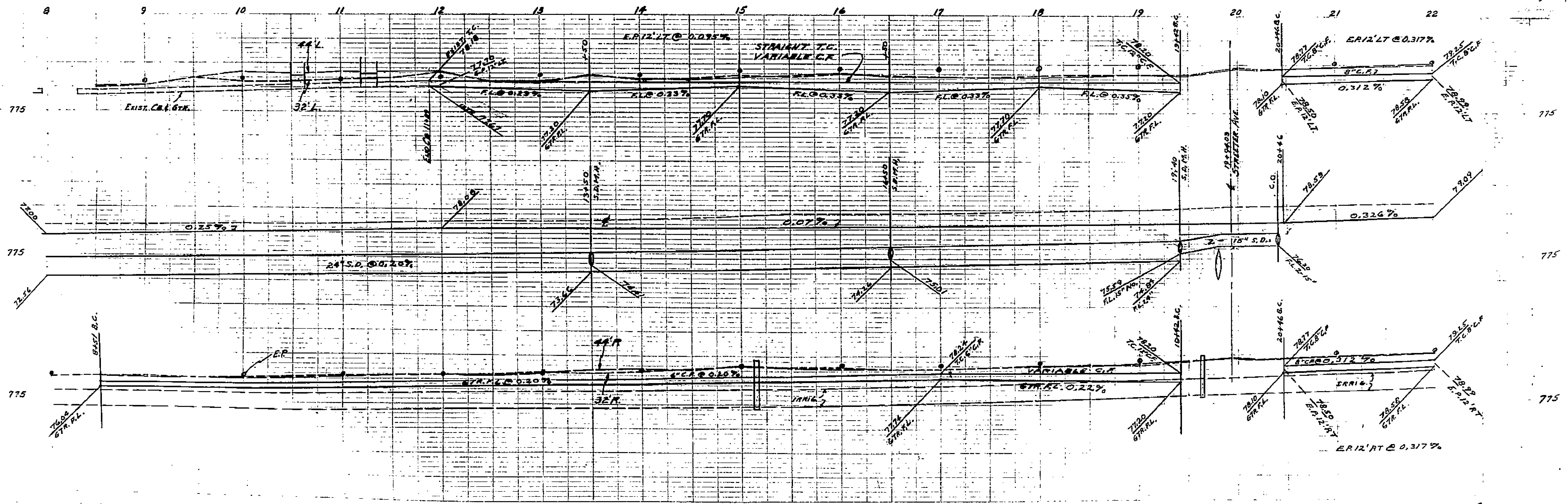
1503A

SCALE: HOR 1" = 50'
VER. 1" = 5'

NOTE:
FROM STREETER AVE W.P.
NOT A PART OF THIS PROJECT
SEE SUBDIVISION PLANS
FOR EXISTING CONDITIONS



HALECREST SUN GARDENS



1503A