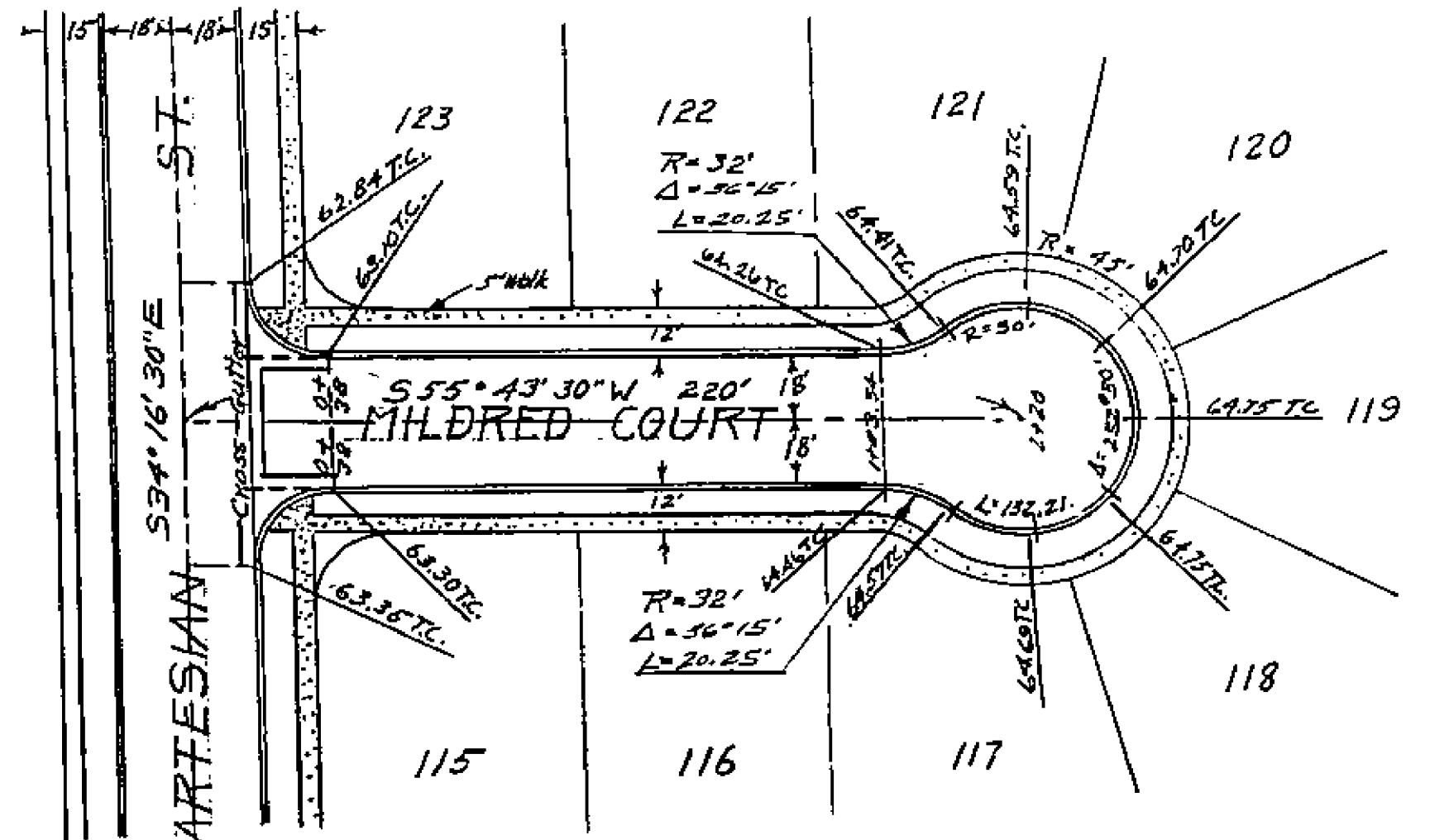
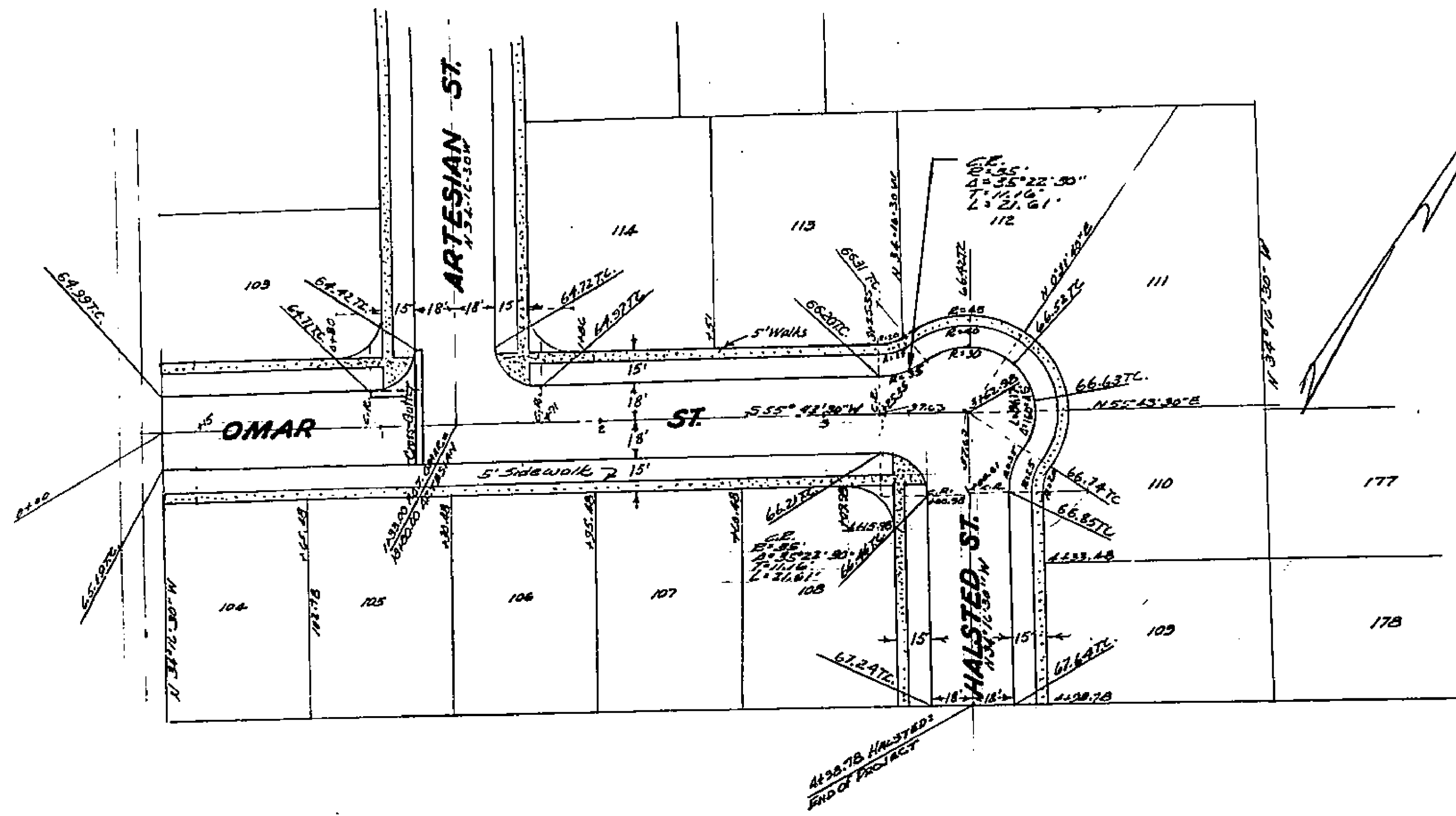
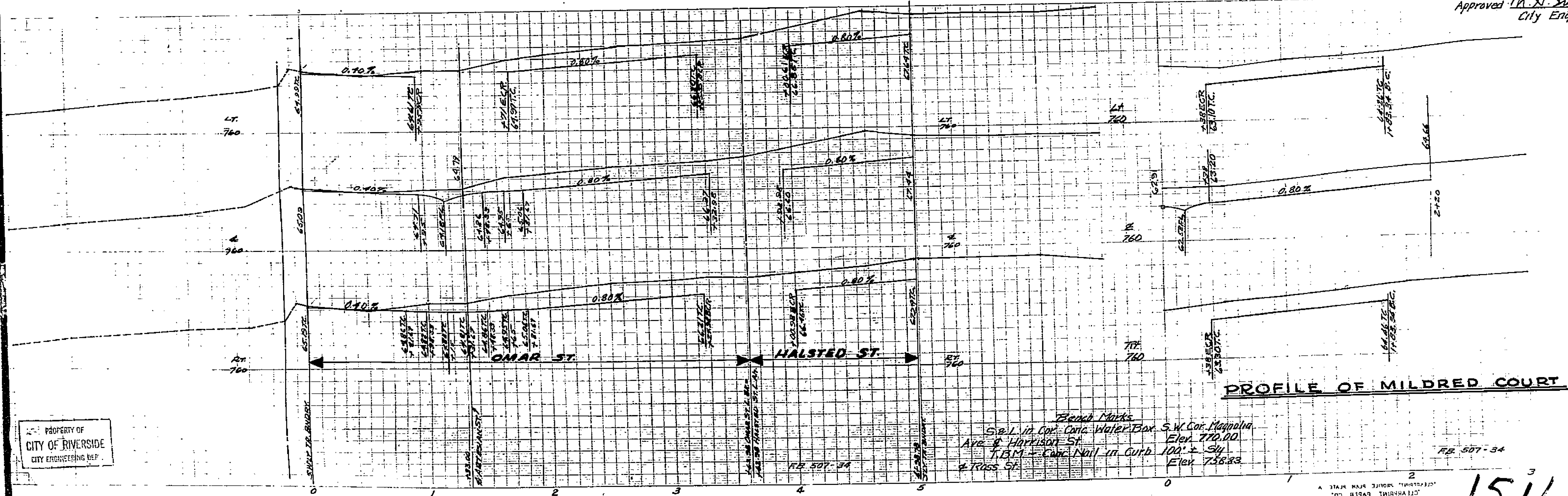


PROPERTY OF
CITY OF RIVERSIDE
CITY ENGINEERING DEPT.



PLAN & PROFILE
SHEET 5 OF 7 SHEETS
HARMONY DALE TRACT NO. 2
FEB. 1955 J. F. DAVIDSON, C.E.
HORIZ. 1"=40'
SCALE: - VERT. 1"=4'

Approved *M. H. Durbin*, Mar. 11, 1955
City Engineer



PROFILE OF MILDRED COURT

Bench Marks
S.W. Cor. Cona Water Box Elev. 770.00
Ave. & Harrison St. Elev. 770.00
T.B.M. - Curb Nail in Curb Elev. 768.83
2 Cross St. Elev. 758.83

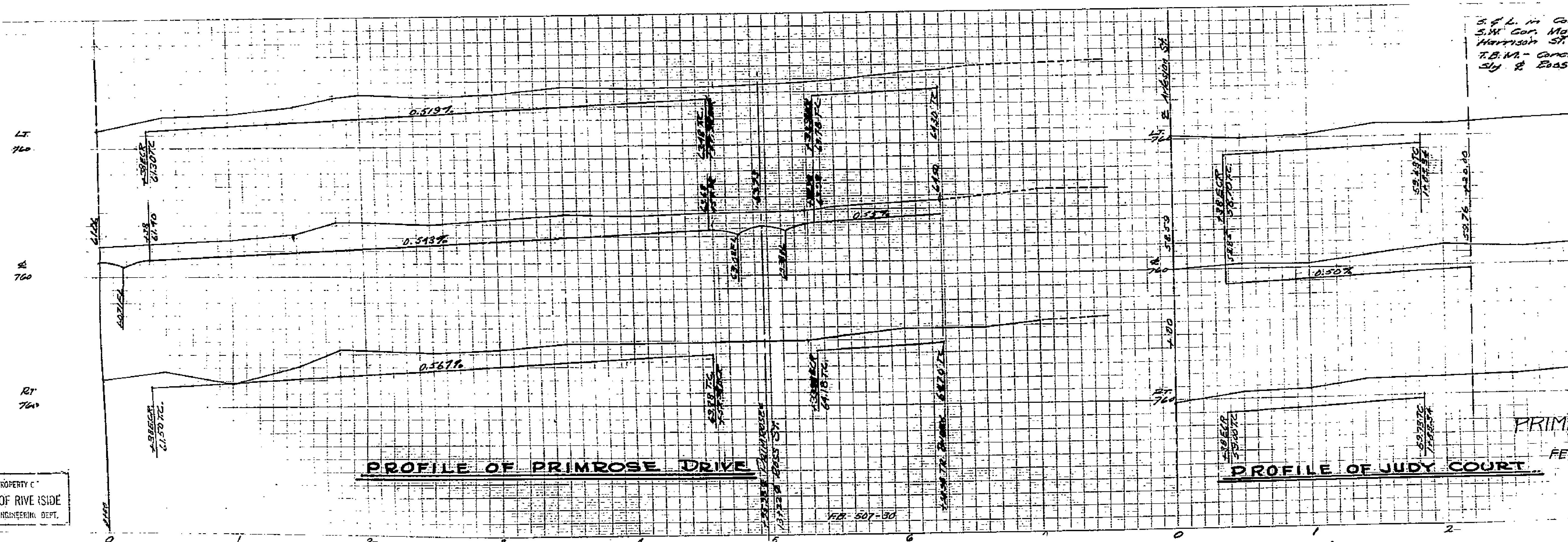
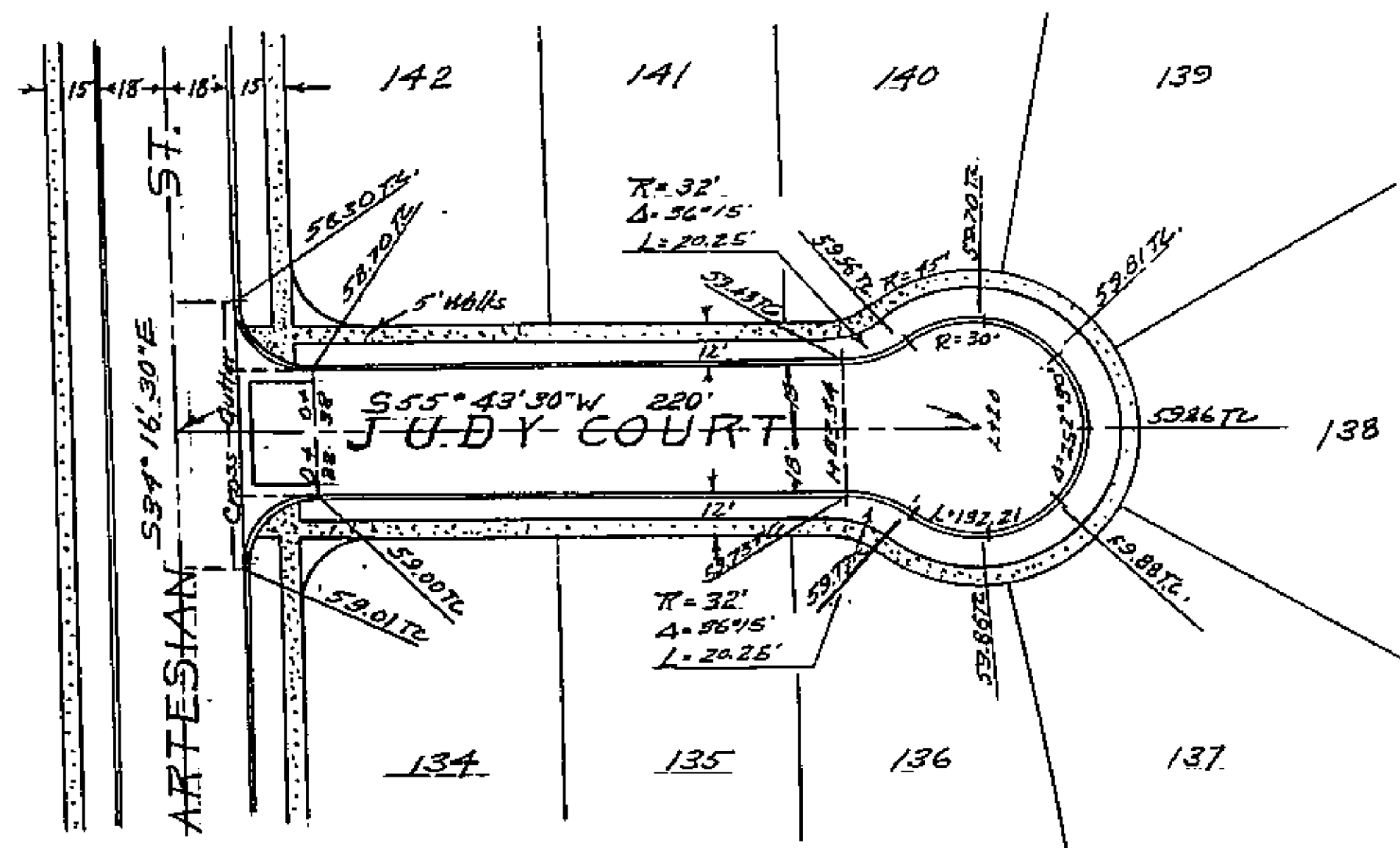
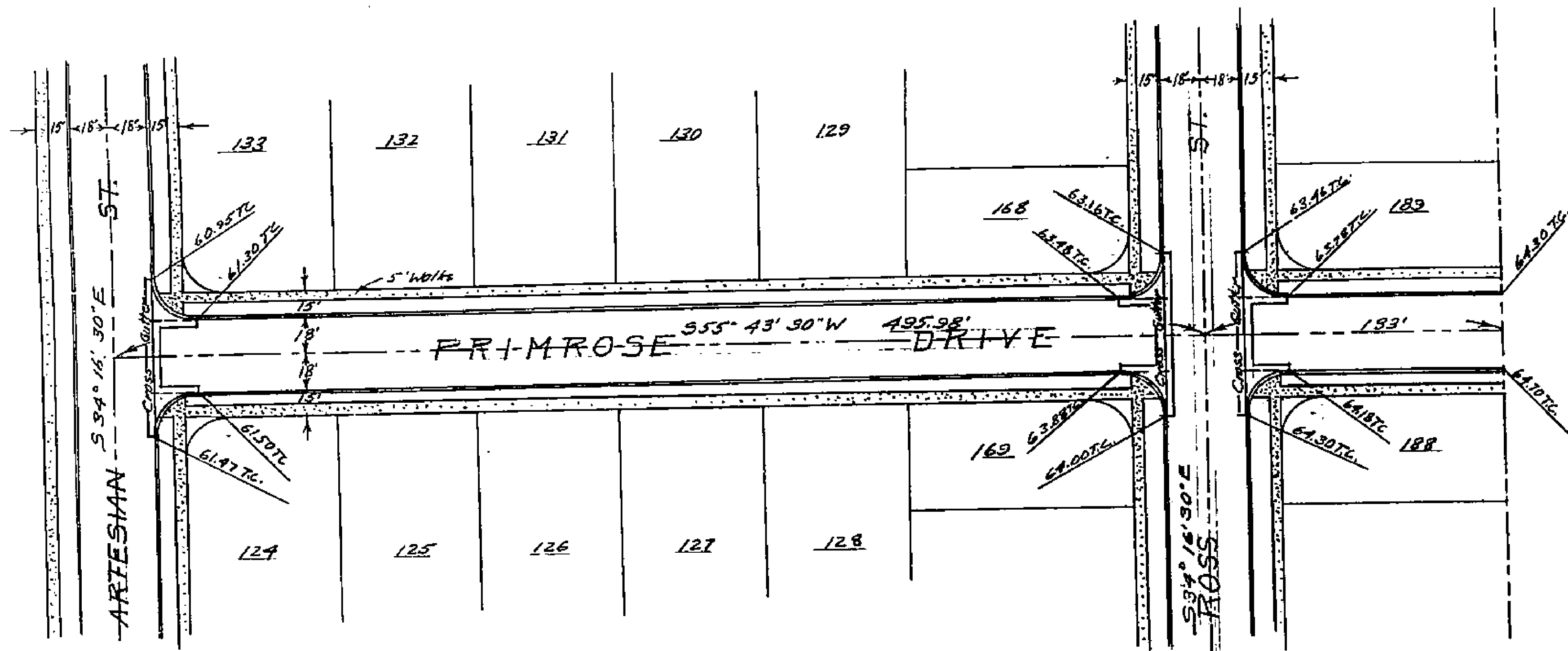
FB 507-34

PROPERTY OF
CITY OF RIVERSIDE
CITY ENGINEERING DEPT.

PROPERTY OF
CITY OF RIVERSIDE
CITY ENGINEERING DEPT.

1511

MADE IN U.S.A.
CELEBRATION PAPER CO.
CLEARANCE FROM PAPER A



Bench Marks
 S.W. Cor. Can. Conc. Water Box Elev. 770.00
 S.W. Cor. Magnolia Ave. & Harrison St.
 T.B. Nail - Conc. Nail in Curb 100' E Elev. 759.83
 Sly. & Ross St.

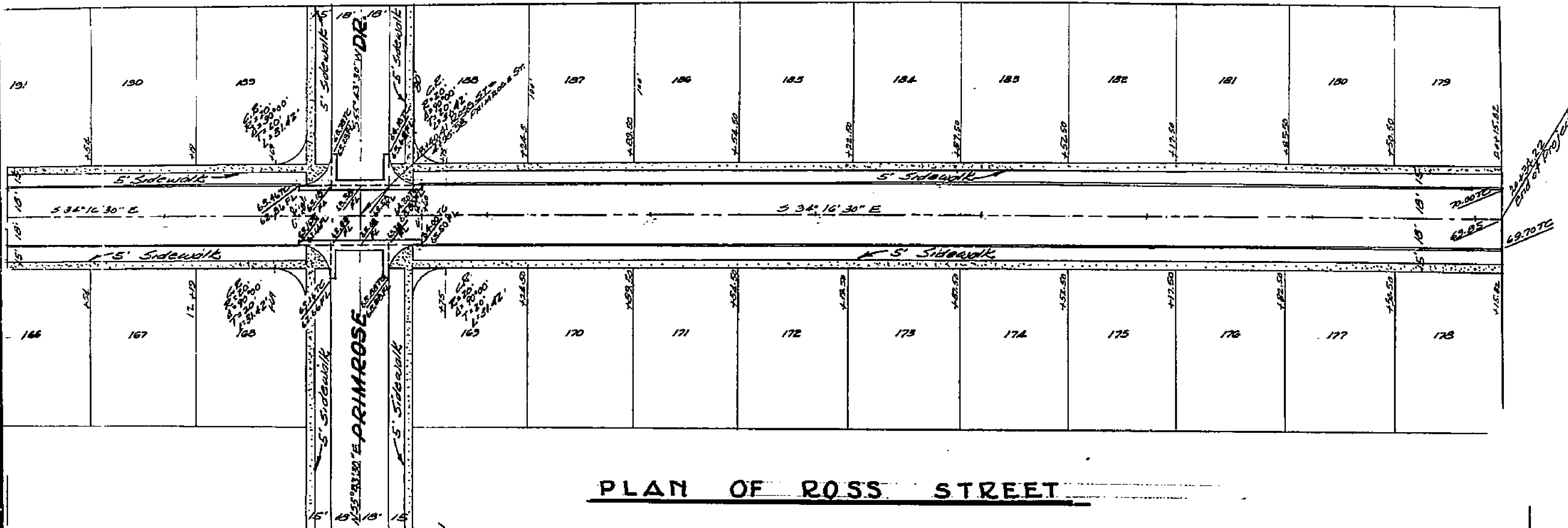
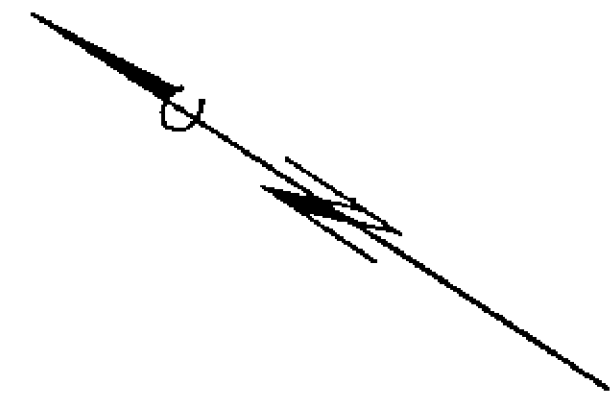
Approved *M. H. Durine* Mar. 11,
City Engineer

PROPERTY OF
CITY OF RIVERSIDE
CITY ENGINEERING DEPT.

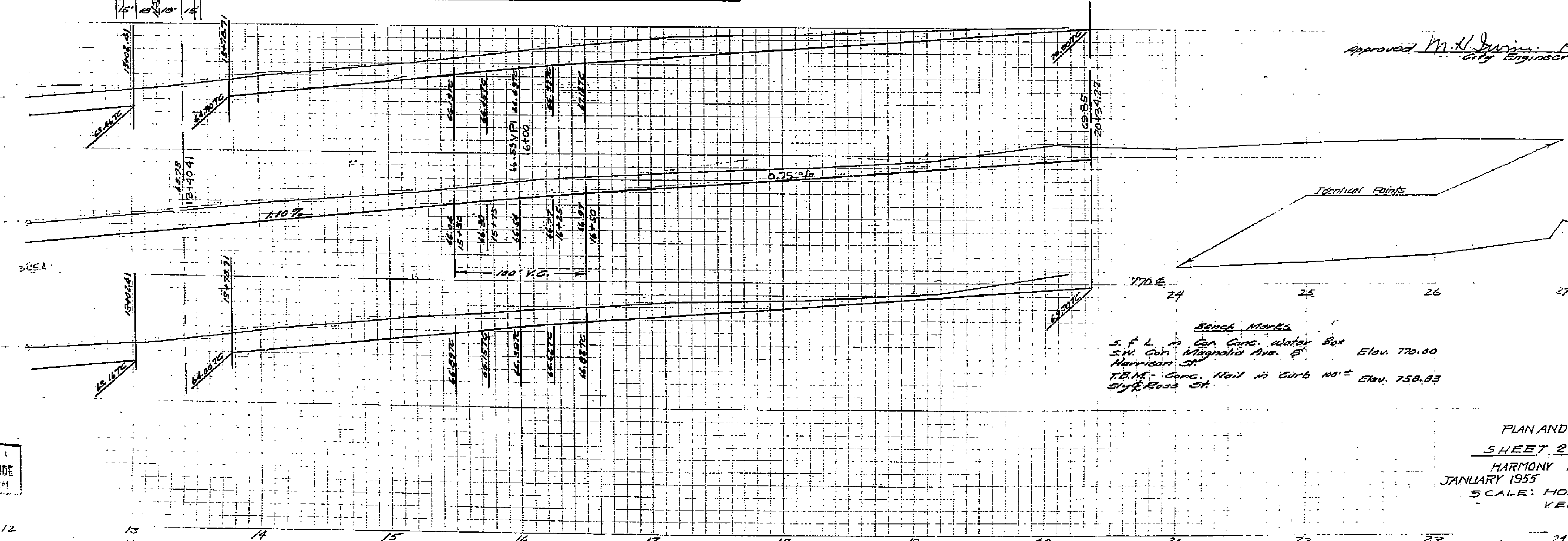
SHEET 6 OF 7 SHEETS

PLAN AND PROFILE
 PRIMROSE DRIVE AND JUDY COURT
 HARMONY DALE TRACT NO. 2
 FEBRUARY 1955 J.E. DAVIDSON (C.E.)
 SCALE: HORIZ. 1" = 40'
 VERT. 1" = 4'

1511



Approved *M.H. Davis* Mar. 11, 1955
City Engineer

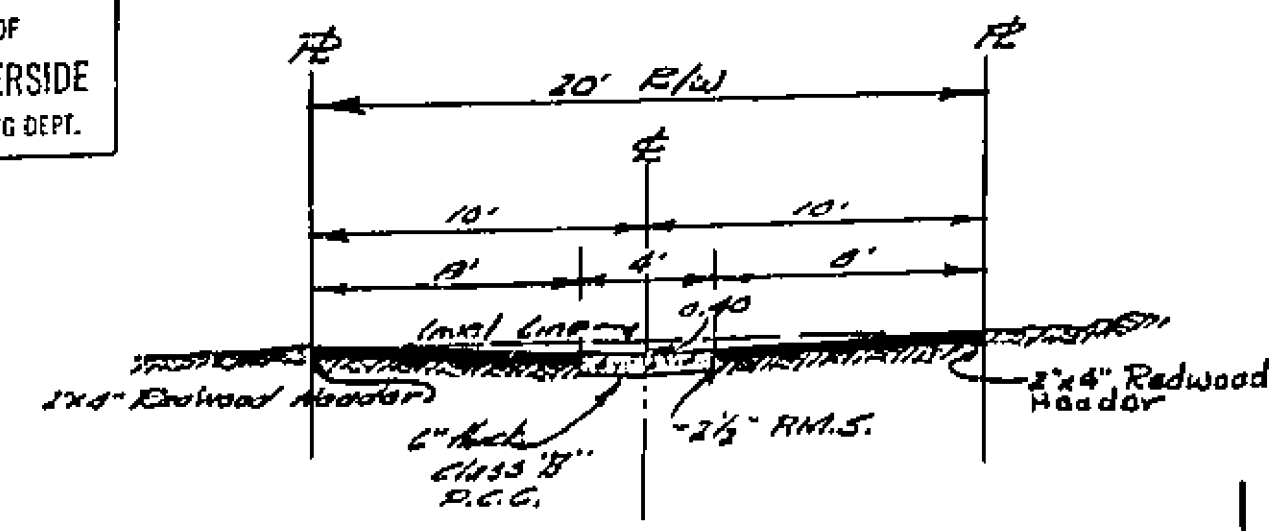


PLAN AND PROFILE
SHEET 2 OF 7 SHEETS
HARMONY DALE TRACT N° 2
JANUARY 1955 J.F. DAVIDSON C.E.
SCALE: HORIZ. 1" = 40'
VERT. 1" = 4'

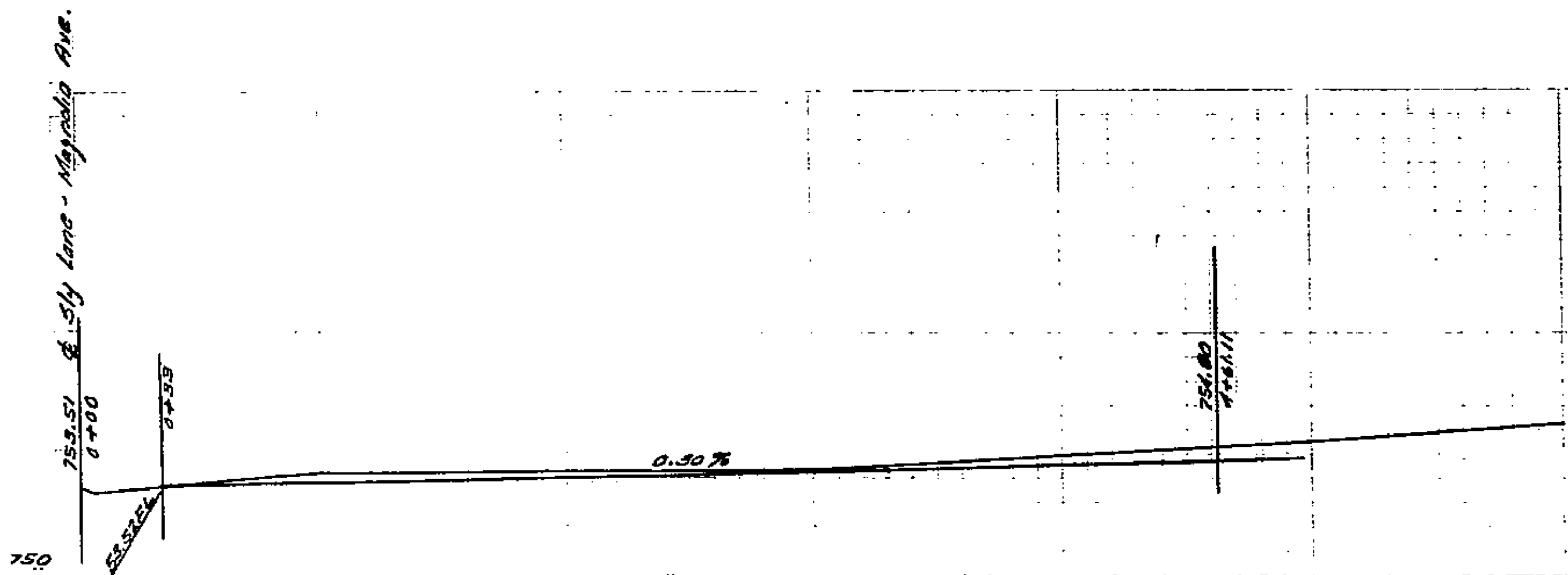
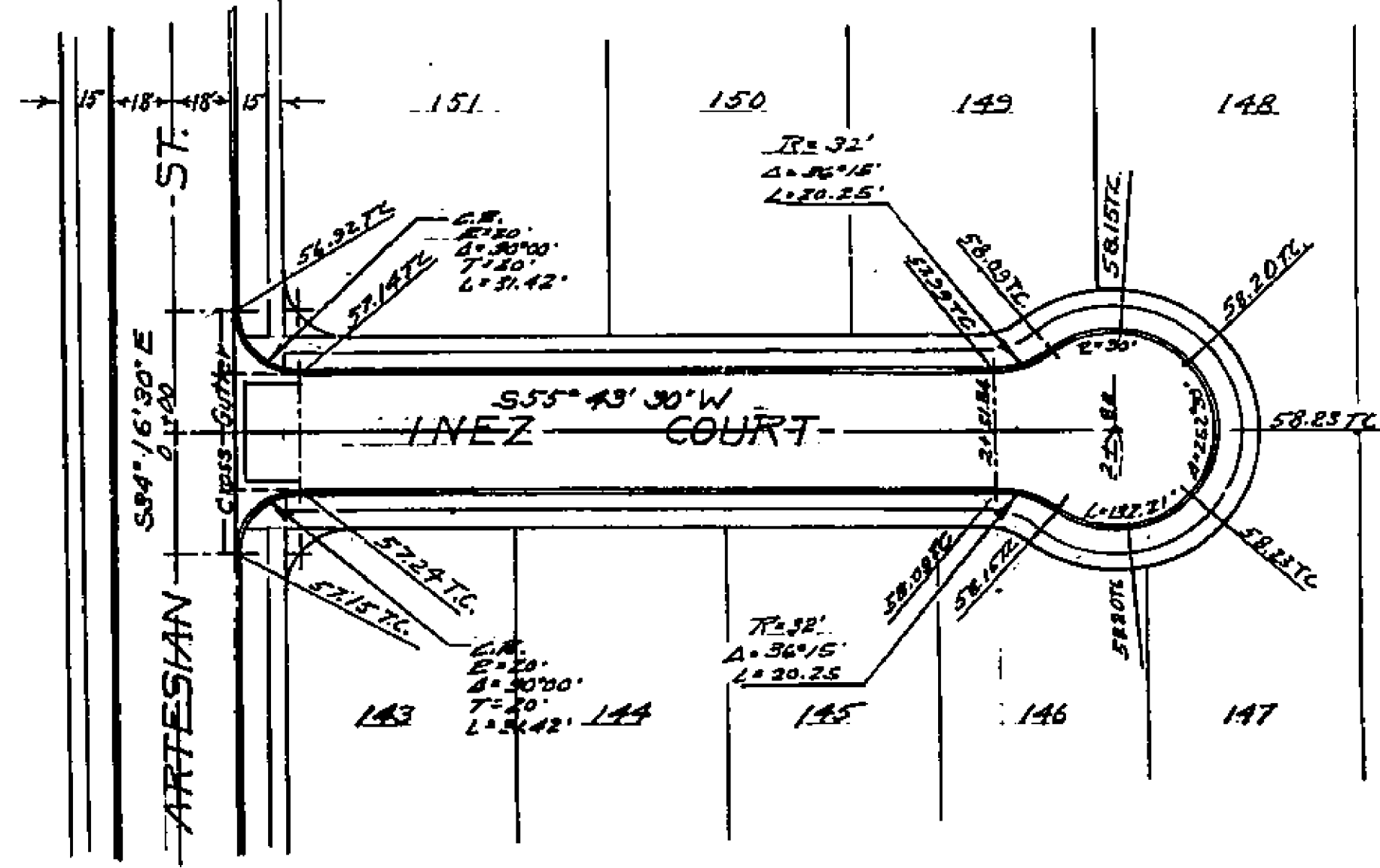
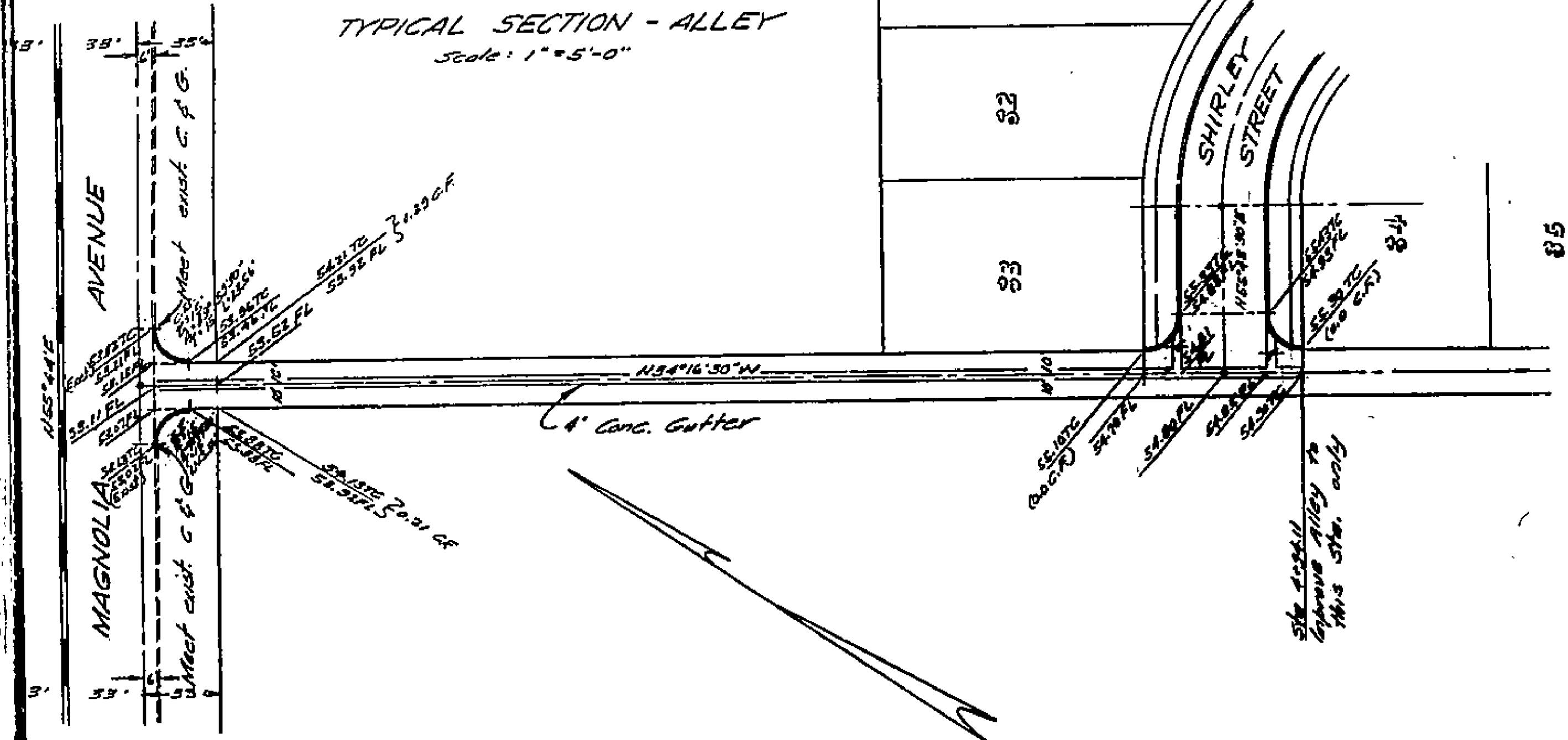
1511

PROPERTY OF
CITY OF RIVERSIDE
CITY ENGINEERING DEPT.

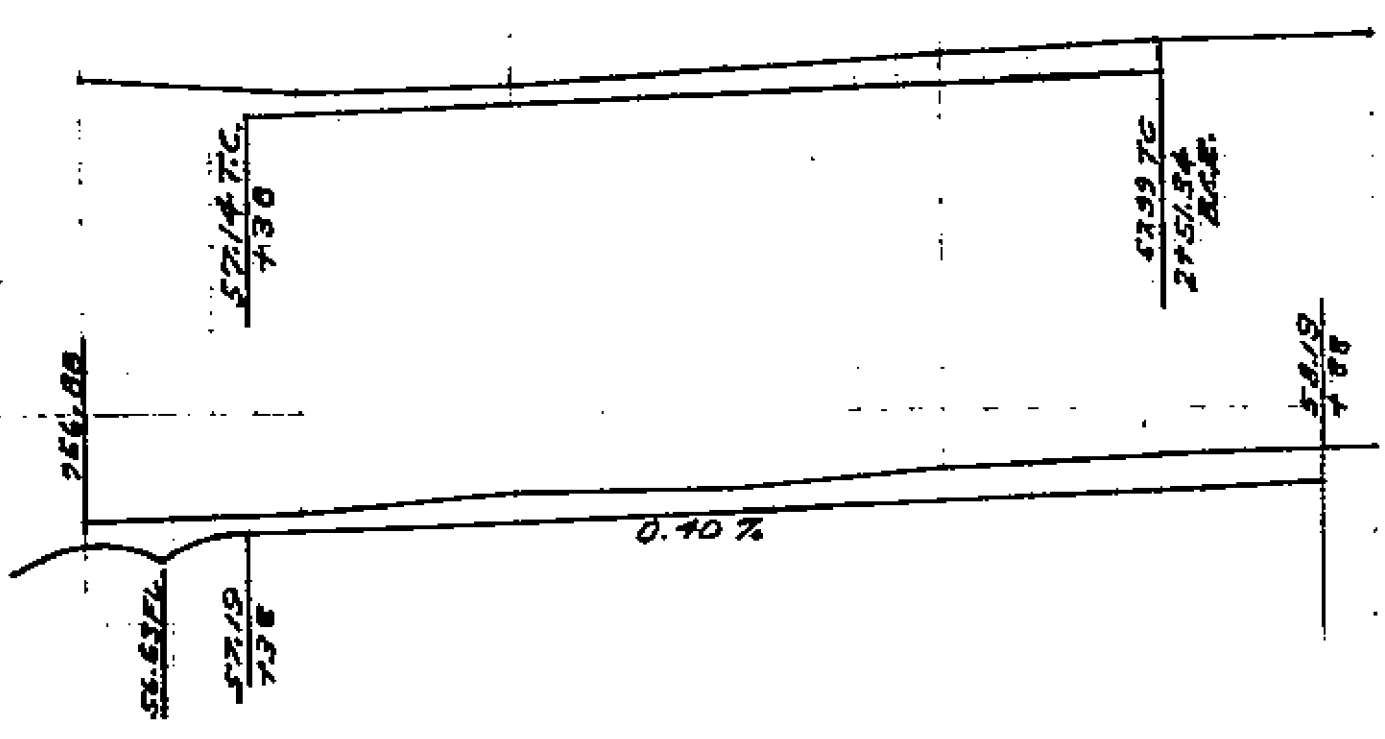
PROPERTY OF
CITY OF RIVERSIDE
CITY ENGINEERING DEPT.



TYPICAL SECTION - ALLEY
Scale: 1" = 5'-0"



PROFILE OF HUGHES ALLEY



PROFILE OF INEZ COURT

Approved M. H. Johnson March 11, 1955
City Engineer

Check Notes
S.A. 1. in On Conc. Water Box
S.W. Cor. Magnolia Ave. & Harmon St. Elev. 770.00
T.B. No. - Conc. Wall on curb 100' Elev. 750.83
Sly. & Ross St.

PROPERTY OF
CITY OF RIVERSIDE
CITY ENGINEERING DEPT.

PROPERTY OF
CITY OF RIVERSIDE
CITY ENGINEERING DEPT.

PLAN & PROFILE
SHEET 7 OF 7 SHEETS
HARMONY DALE TRACT NO 2
February 1955 J.F. DAVIDSON, C.E.

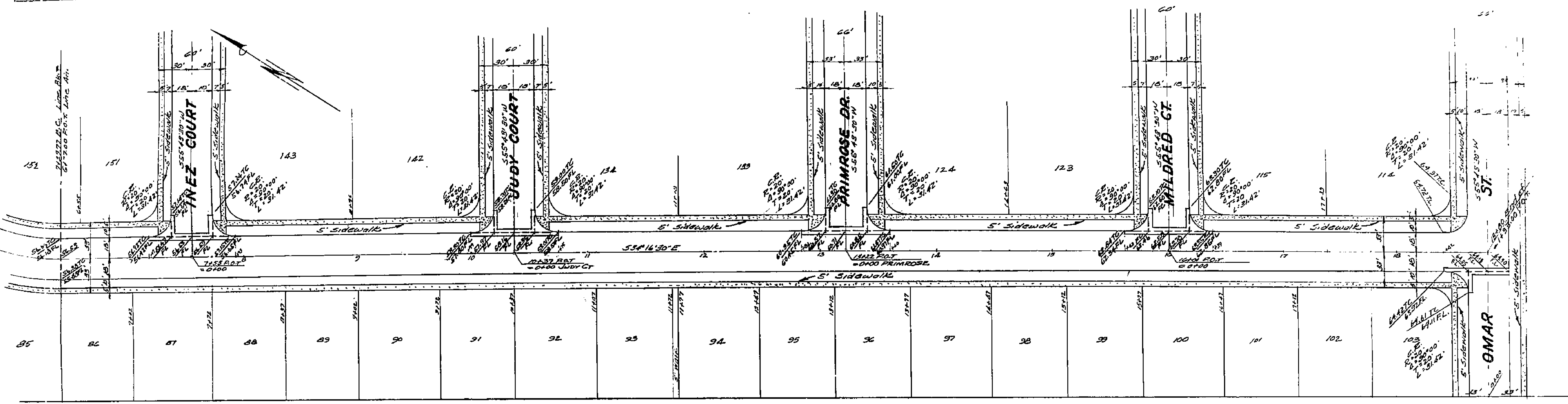
Scale: Horiz - 1" = 40'
Vert - 1" = 4'

1511

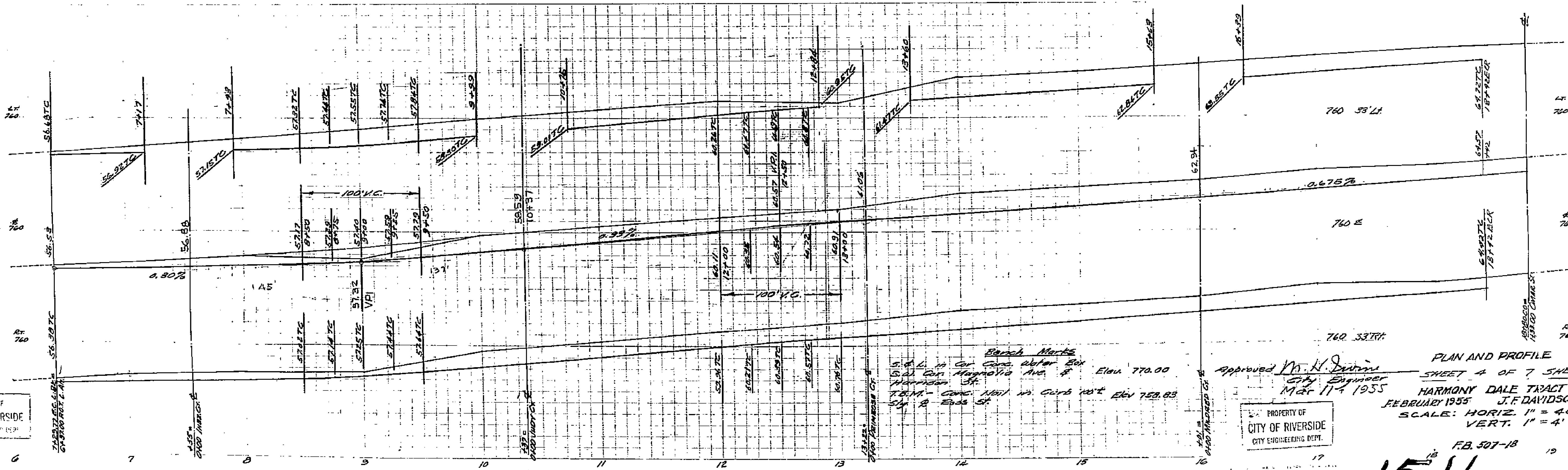
FB 507-21 & 40

FB 507-29

PROPERTY OF
CITY OF RIVERSIDE
CITY ENGINEERING DEPT.



PLAN OF ARTESIAN STREET



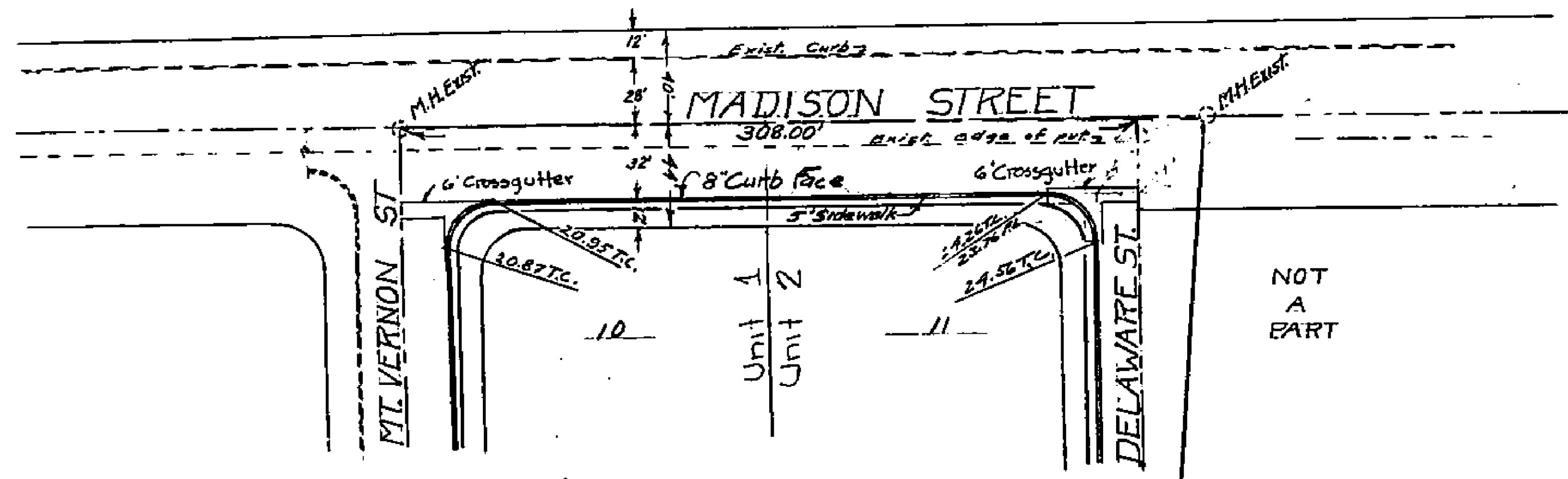
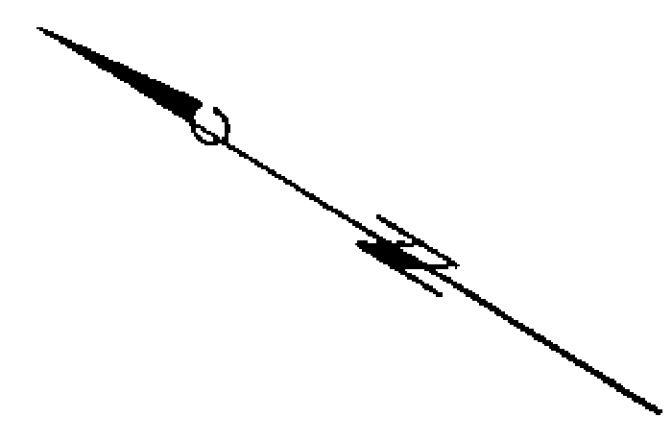
PROPERTY OF
CITY OF RIVERSIDE
CITY ENGINEERING DEPT.

PROPERTY OF
CITY OF RIVERSIDE
CITY ENGINEERING DEPT.

1511

PROPERTY OF
CITY OF RIVERSIDE
CITY ENGINEERING DEPT.

PROPERTY OF
CITY OF RIVERSIDE
CITY ENGINEERING DEPT.



Mt. Vernon St

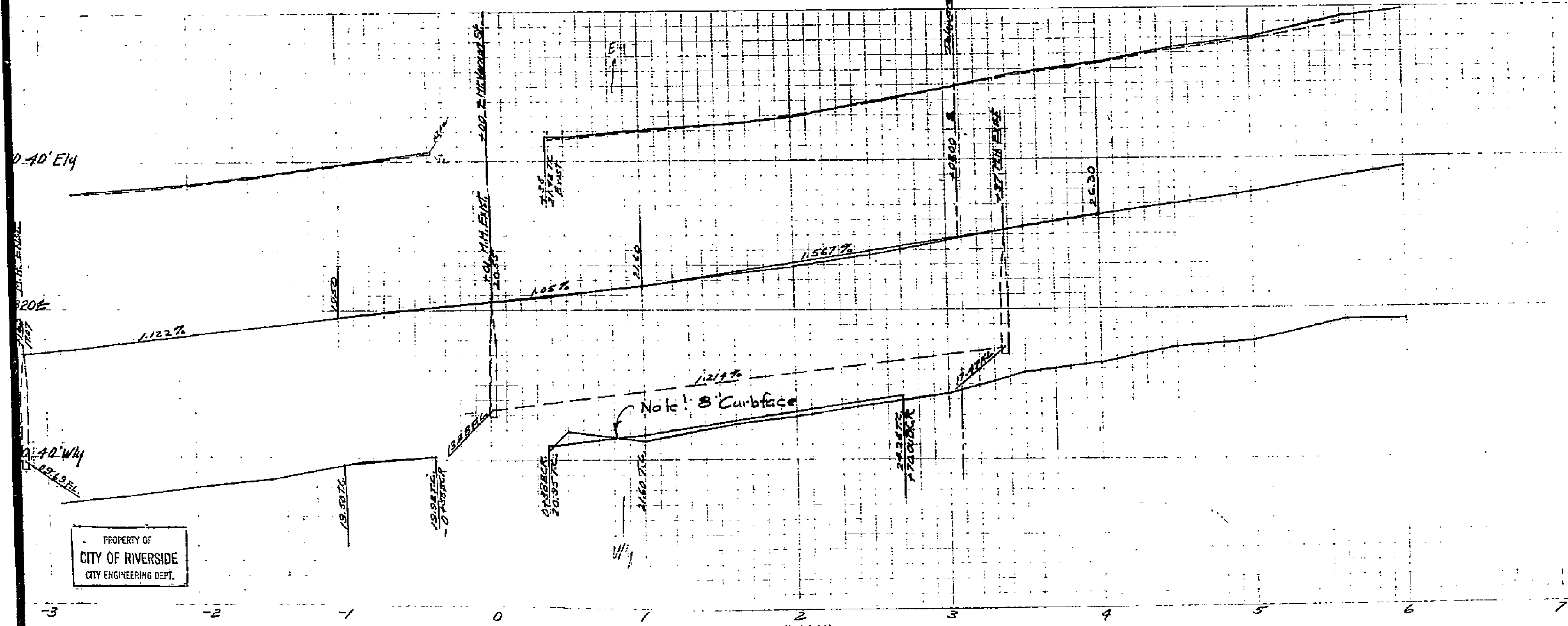
Mt. Vernon St

DELAWARE ST

NOT
A
PART

B.M. S. & L. in S. Co. of N. drive
Magnolia Ave. 10' W. of W. R. of
Madison St. Elev. 814.16

SHEET 1 OF 3



Approved *M. N. Durino* Mar. 11, 1955
City Engineer

PROPERTY OF
CITY OF RIVERSIDE
CITY ENGINEERING DEPT.

PLAN AND PROFILE
MADISON STREET
OAK MANOR NO 4
JANUARY 1955 J.F. DAVIDSON
SCALE: HOR. 1"=40'
VERT. 1"=4'

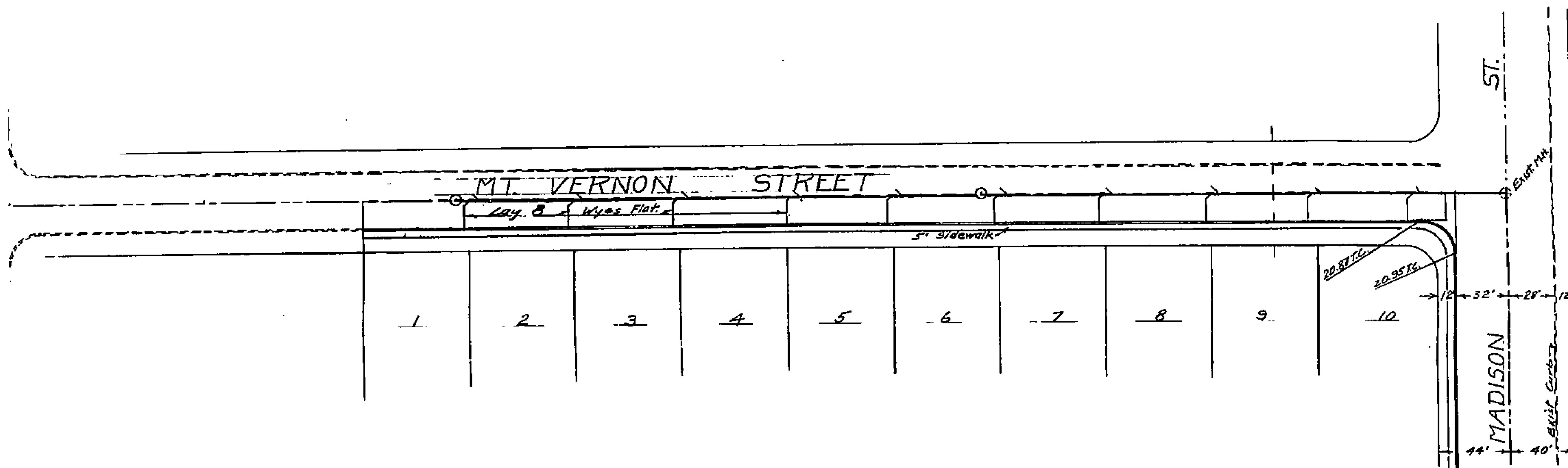
PROPERTY OF
CITY OF RIVERSIDE
CITY ENGINEERING DEPT.

1511

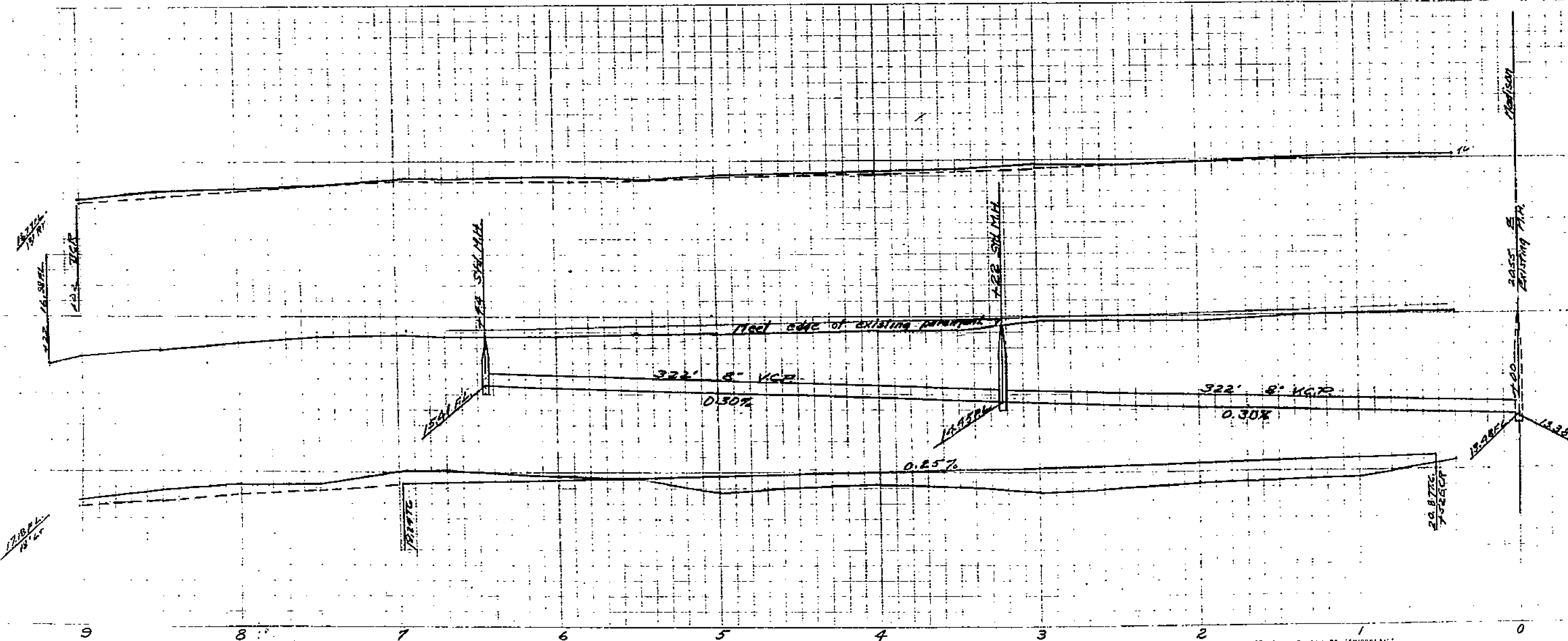
F.B. 499-10

PROPERTY OF
CITY OF RIVERSIDE
CITY ENGINEERING DEPT.

PROPERTY OF
CITY OF RIVERSIDE
CITY ENGINEERING DEPT.



SHEET 3 OF 3



Approved *M. H. Duvine* Mar. 11, 1955
City Engineer

PROPERTY OF
CITY OF RIVERSIDE
CITY ENGINEERING DEPT.

PLAN AND PROFILE
MT. VERNON STREET
OAK MANOR NO 4
JANUARY 1955 J. F. DAVIDSON C.E.
SCALE: HOR. 1"=40'
VERT. 1"=4'

1511

F.B. 499-40

PROPERTY OF
CITY OF RIVERSIDE
CITY ENGINEERING DEPT.