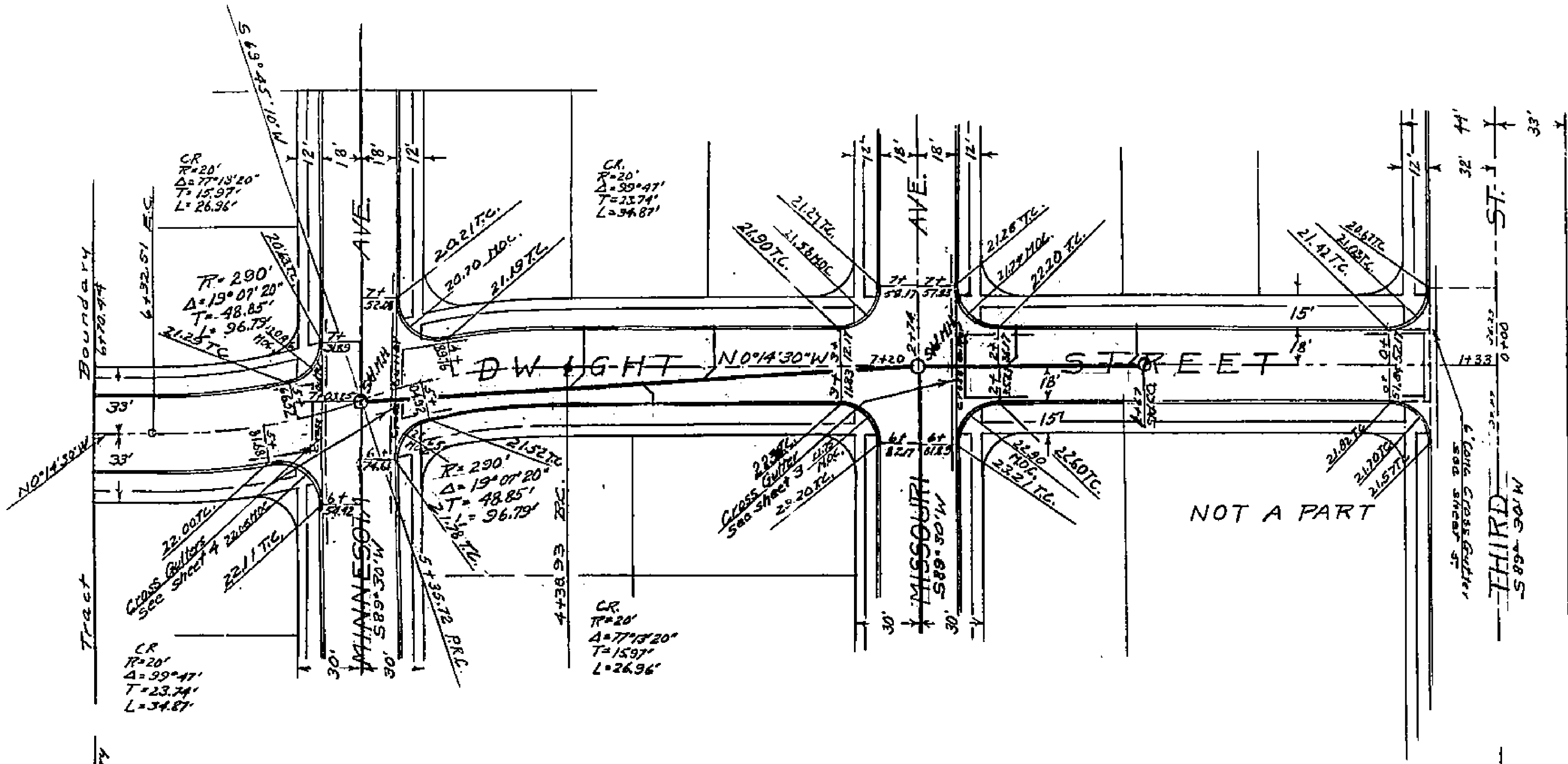


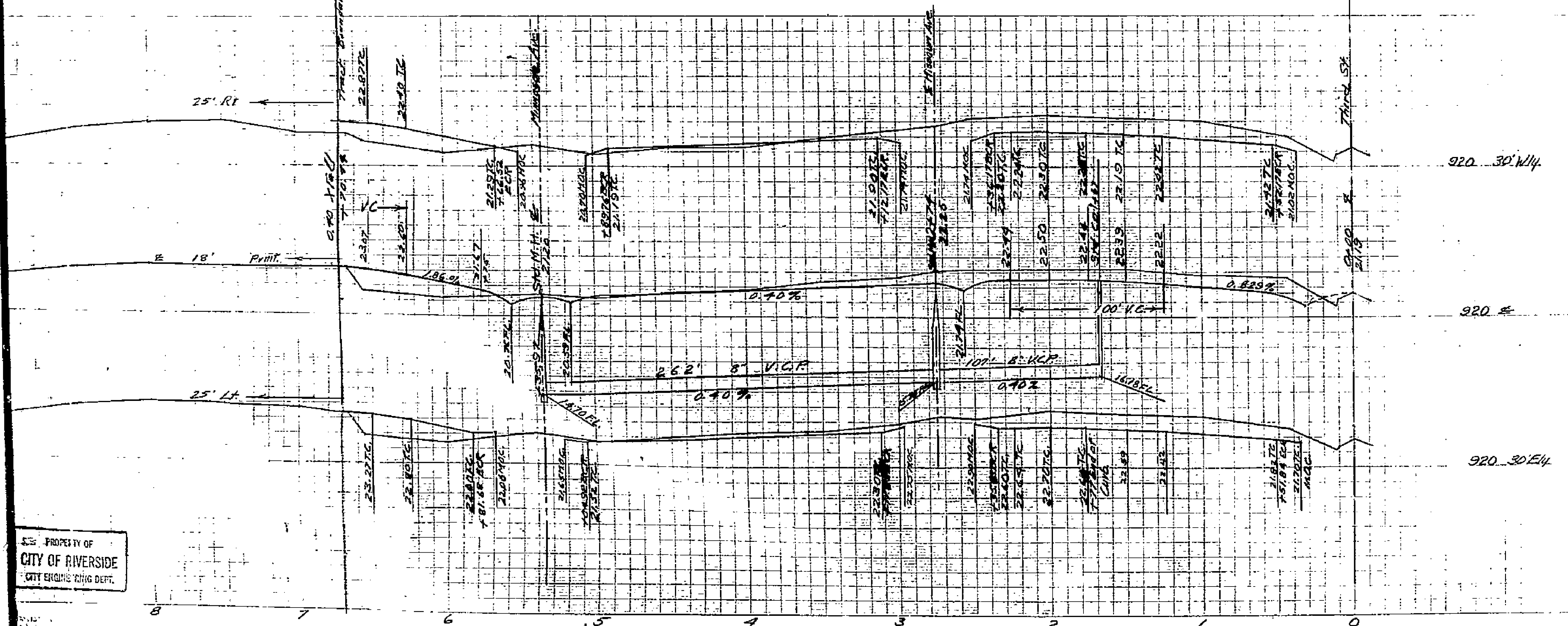
Approved *M. H. Irvine* 4, 4, 1955
City Engineer

PLAN AND PROFILE
ANDERSON AVENUE
ANDERSON PARK
JANUARY 1955 J. F. DAVIDSON C.E.
SCALE: HORIZ. 1" = 90'
VERT. 1" = 4'

1513



SHEET 1 OF 6

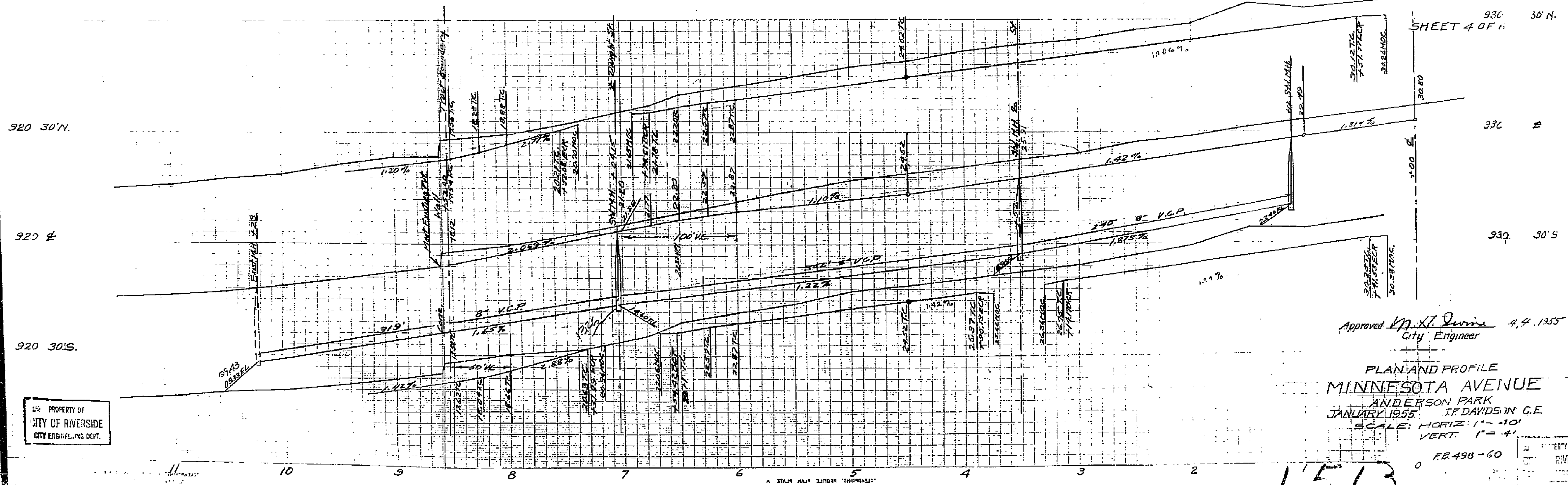
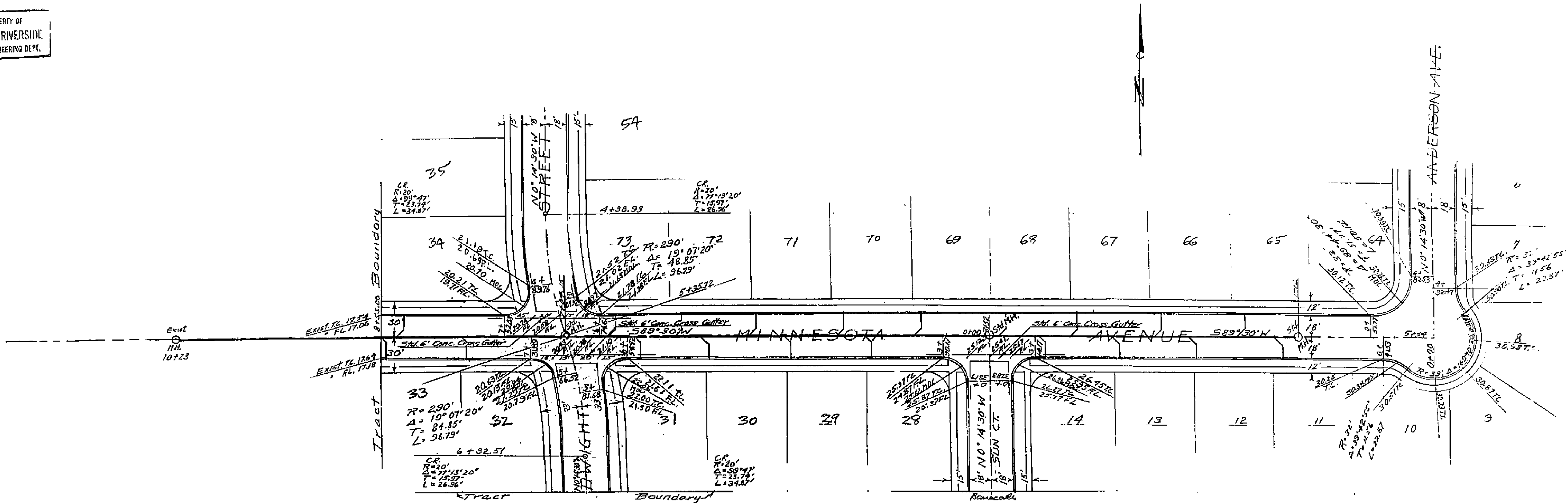


Revised April 11, 1956
Approved for Director of Public Works

Approved M. K. Swin 4/4/1955
City Engineer

PLAN AND PROFILE
DWIGHT STREET
ANDERSON PARK
JANUARY, 1955 J. F. DAVIDSON C.E.
SCALE: HORIZ. 1" = 40'
VERT. 1" = 4'

1513



Approved *M. H. Davis* 4.4.1955
City Engineer

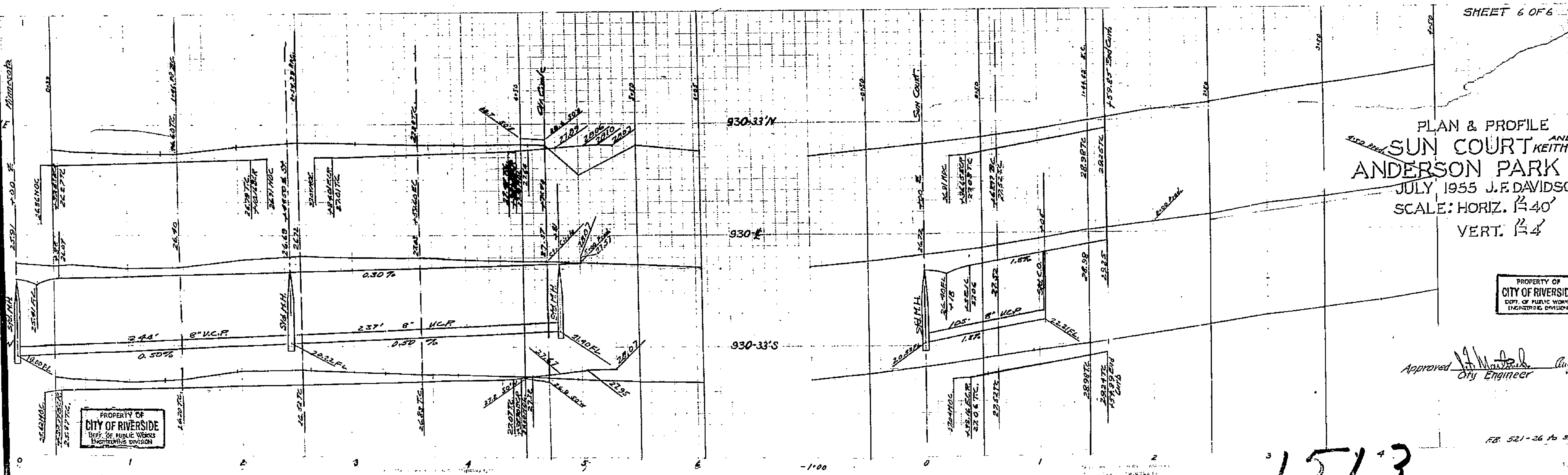
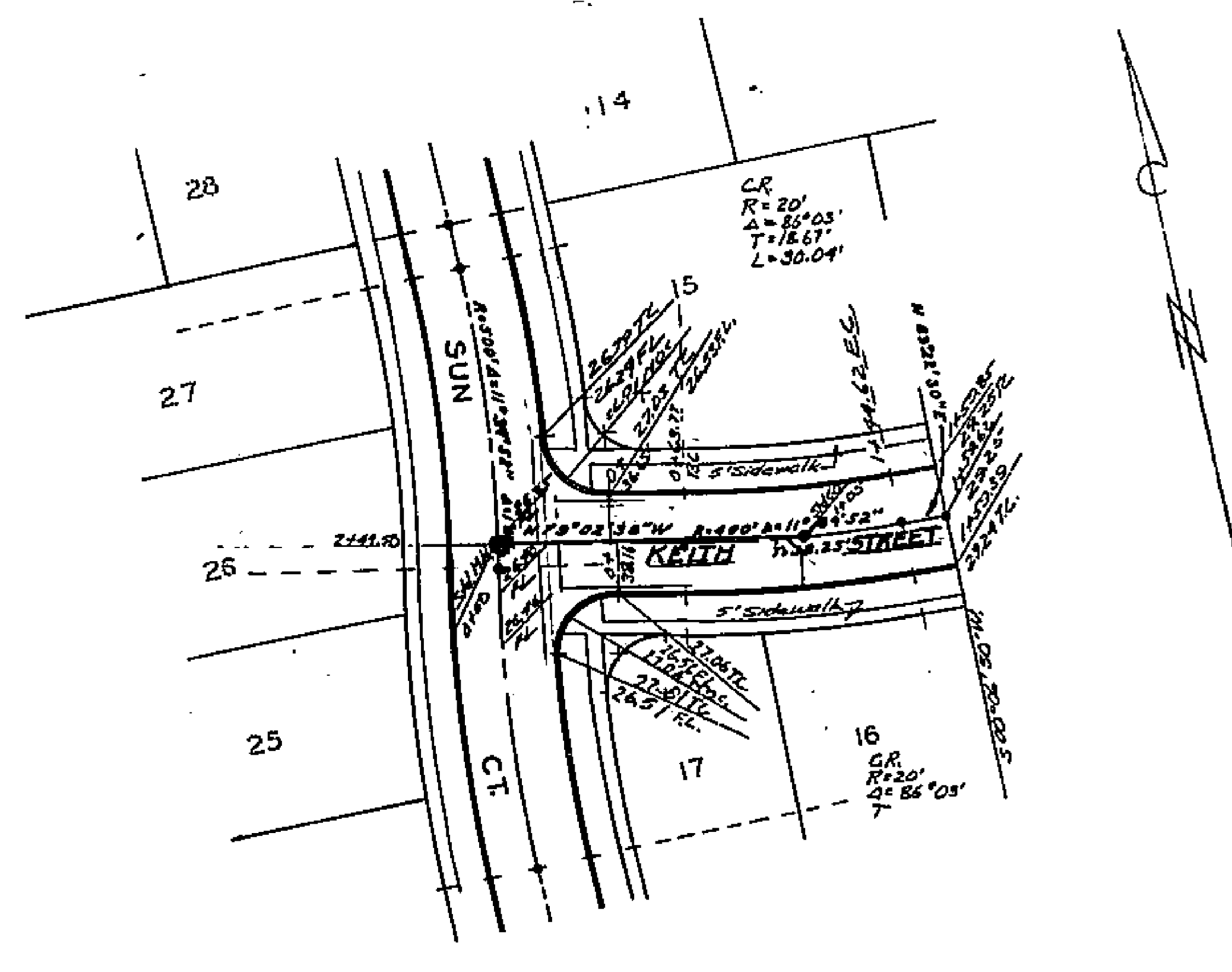
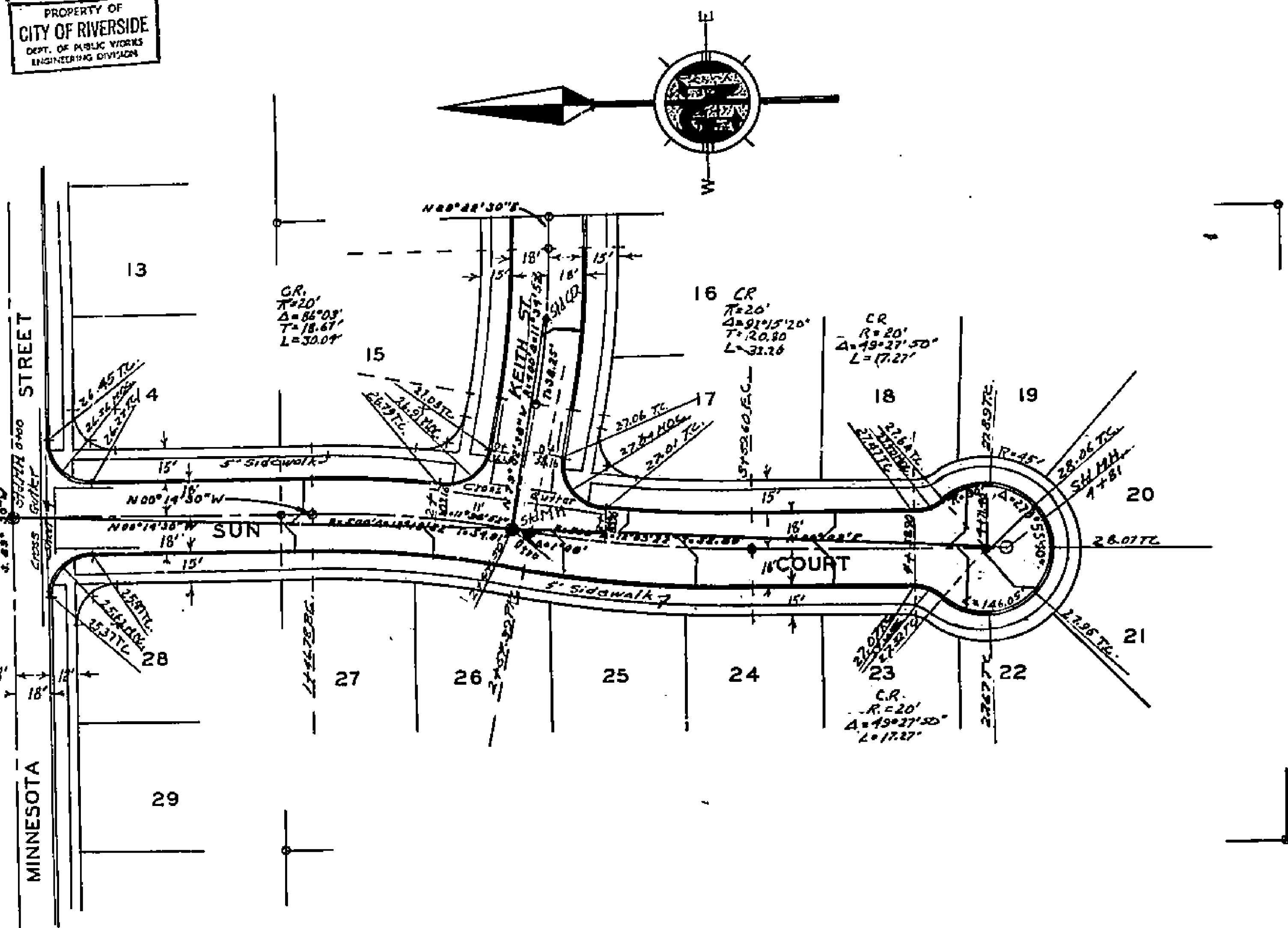
PLAN AND PROFILE
MINNESOTA AVENUE
ANDERSON PARK
JANUARY 1955 J.F. DAVIDSON G.E.
SCALE: HORIZ. 1" = 40'
VERT. 1" = 4'

FB. 498-60

1513

PROPERTY OF
CITY OF RIVERSIDE
DEPT. OF PUBLIC WORKS
ENGINEERING DIVISION

PROPERTY OF
CITY OF RIVERSIDE
DEPT. OF PUBLIC WORKS
ENGINEERING DIVISION



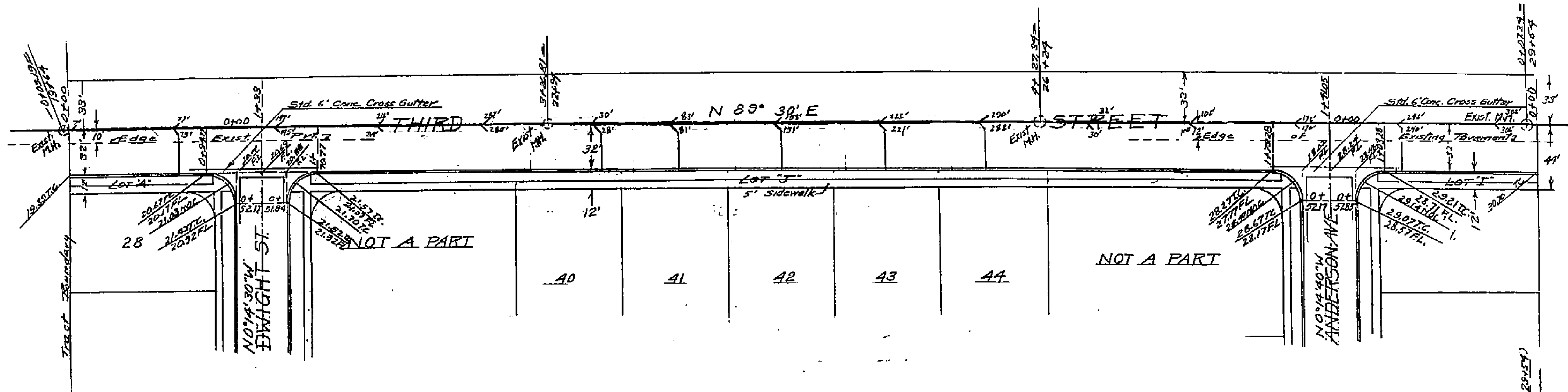
PLAN & PROFILE
SUN COURT AND KEITH STREET
ANDERSON PARK
JULY 1955 J.F. DAVIDSON
SCALE: HORIZ. 1/4" = 40'
VERT. 1/4" = 4'

PROPERTY OF
CITY OF RIVERSIDE
DEPT. OF PUBLIC WORKS
ENGINEERING DIVISION

Approved *J.F. Davidson*
City Engineer

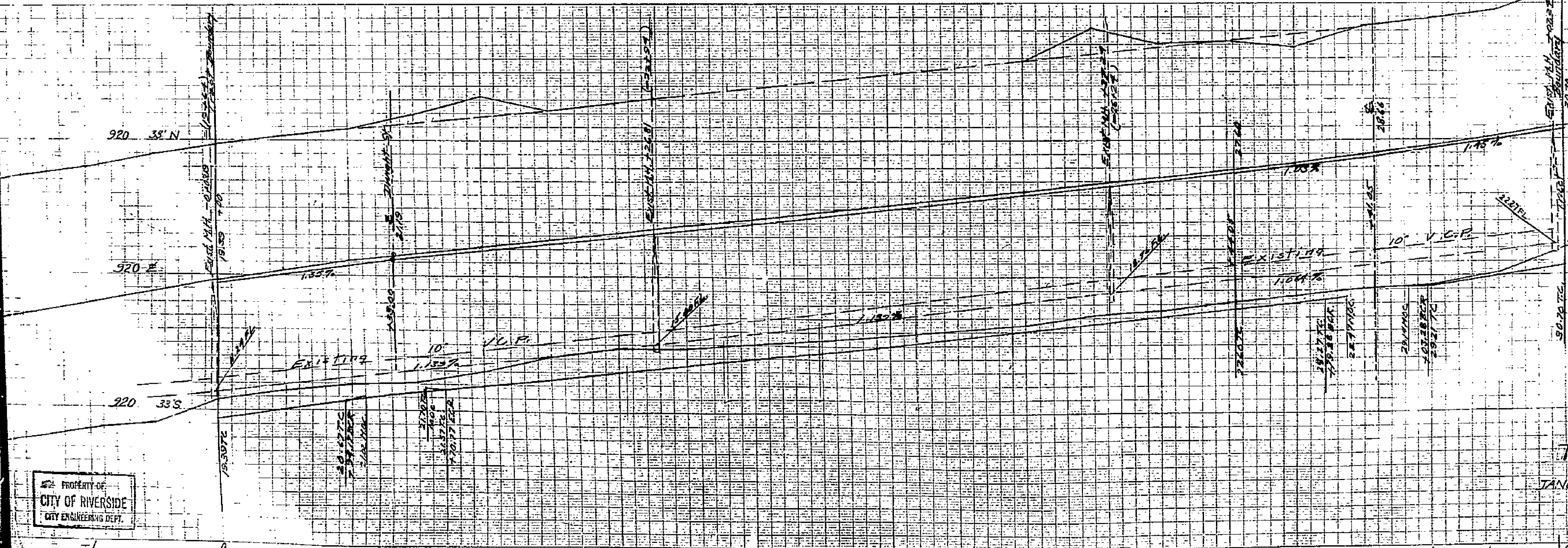
PROPERTY OF
CITY OF RIVERSIDE
DEPT. OF PUBLIC WORKS
ENGINEERING DIVISION

1513



Handwritten note:
 When starting to lay out
 these lots in 1854

SHEET 5 OF 6



Approved *W. L. Denton*, 4/14, 1955
 City Engineer
 Approved as revised *R. W. ...*
 RE 1783 For the City

PLAN AND PROFILE
 THIRD STREET
 ANDERSON PARK
 JANUARY 1955 JF DAVIDSON C.E.
 SCALE HORIZ. 1" = 40'
 VERT. 1" = 4'

1513