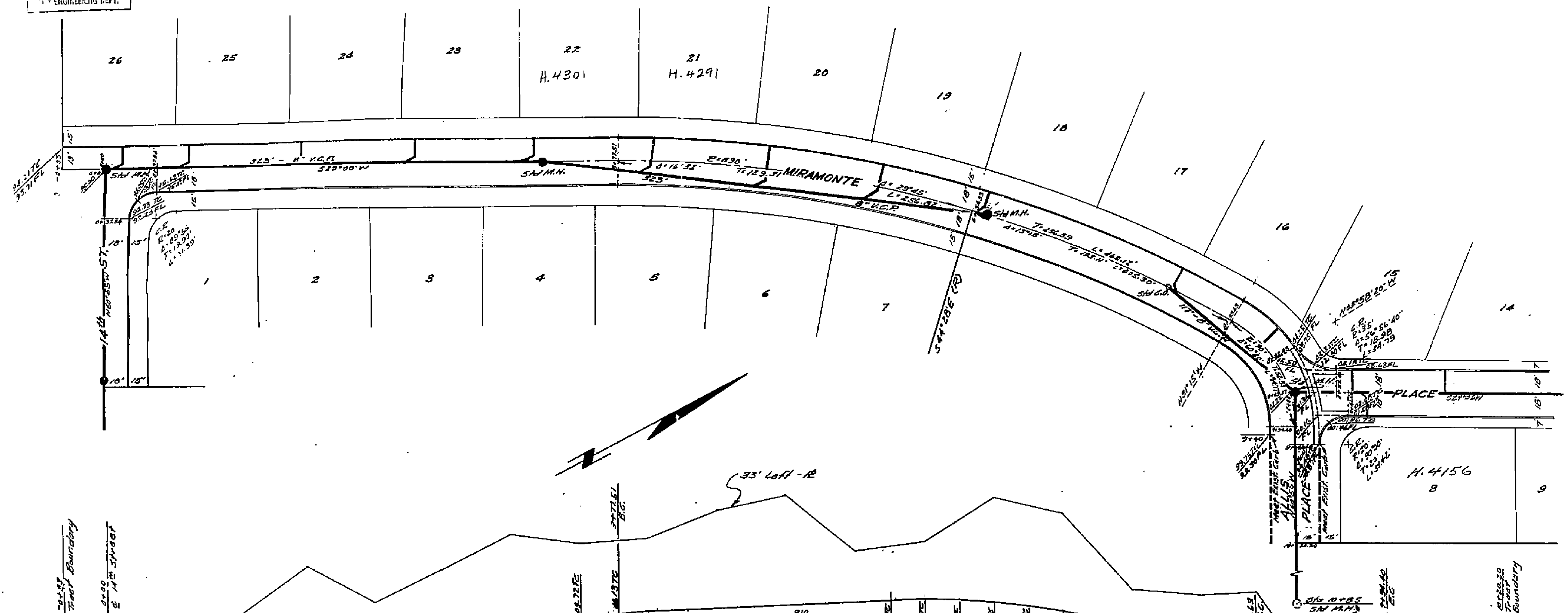
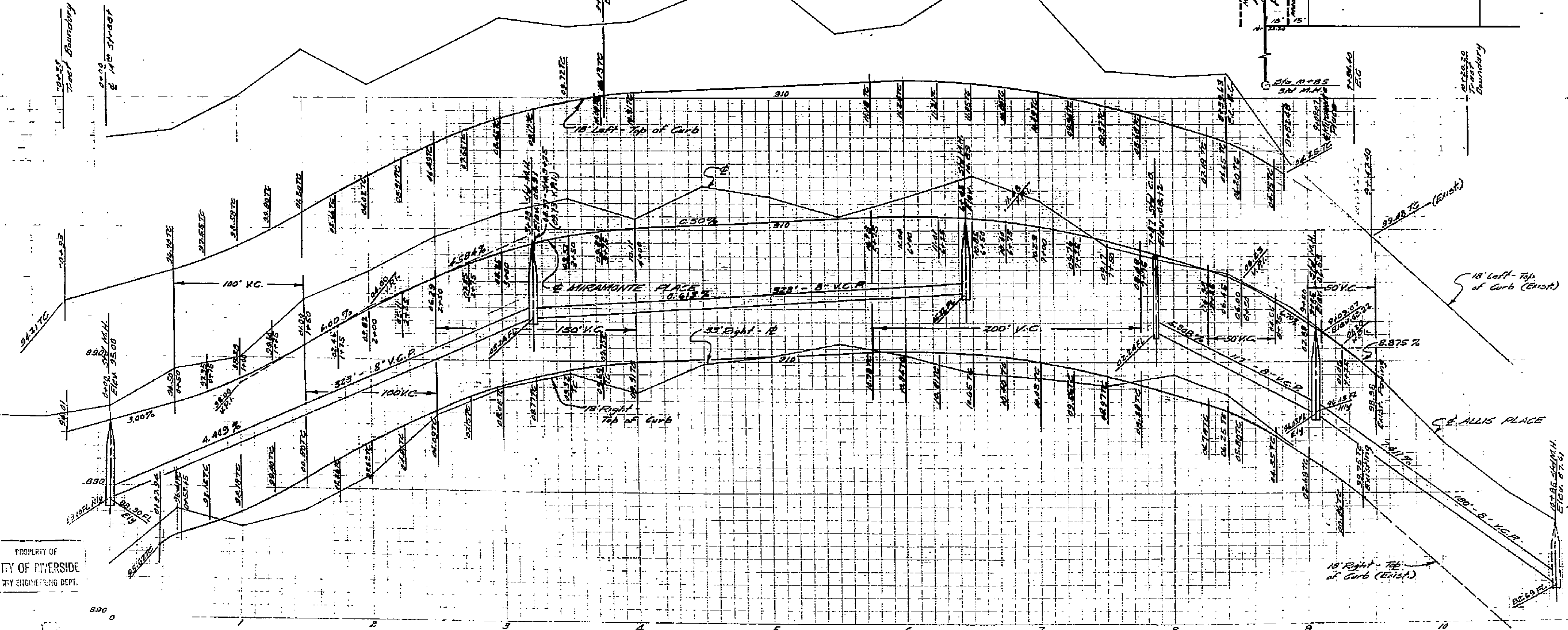


PROPERTY OF
CITY OF RIVERSIDE
CITY ENGINEERING DEPT.



02
27
21
19

SHEET 1 OF 3 SHEETS



Bench Mark
Brass cap in concrete
N.E. Cor. Almist & Pappert St.
Elev. 837.62

Approved M.H. Davison
City Engineer
890

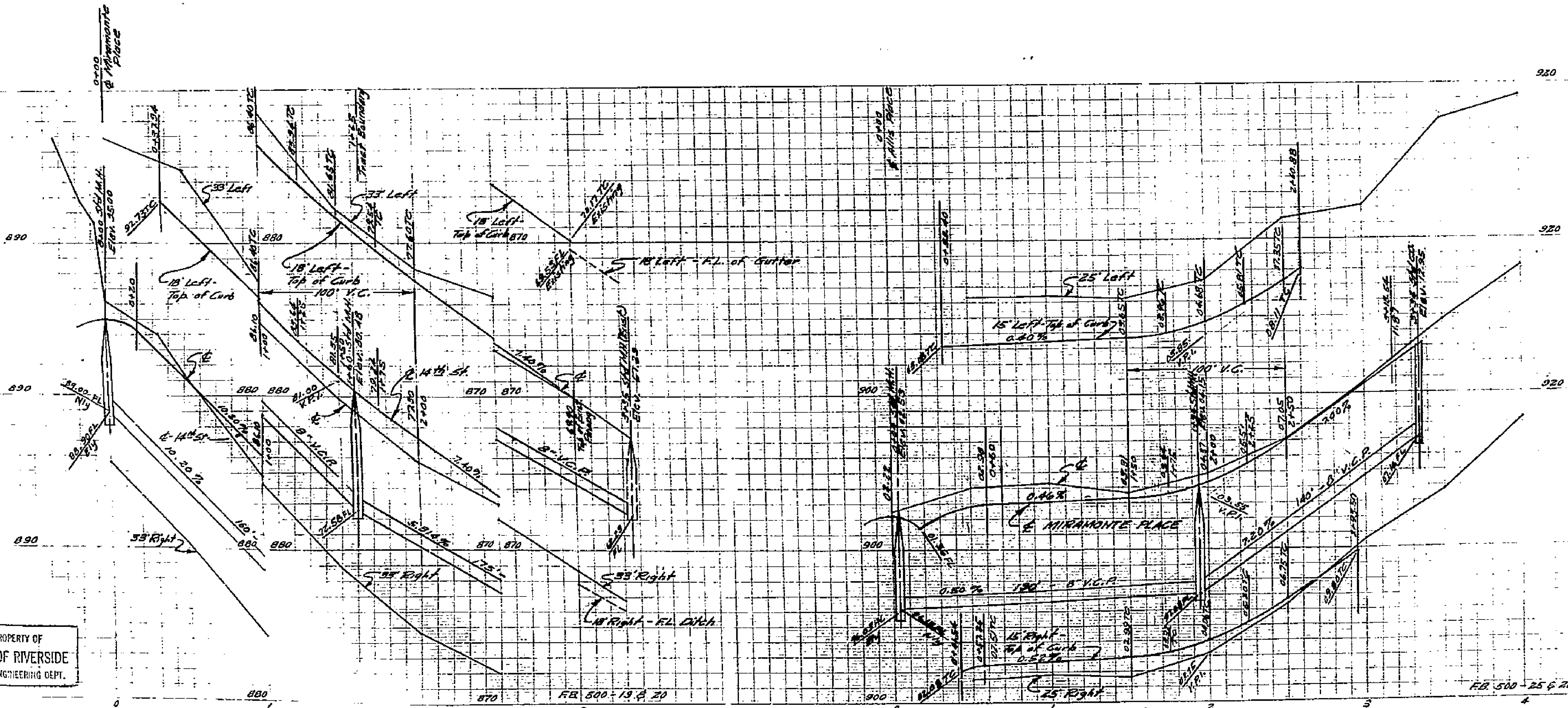
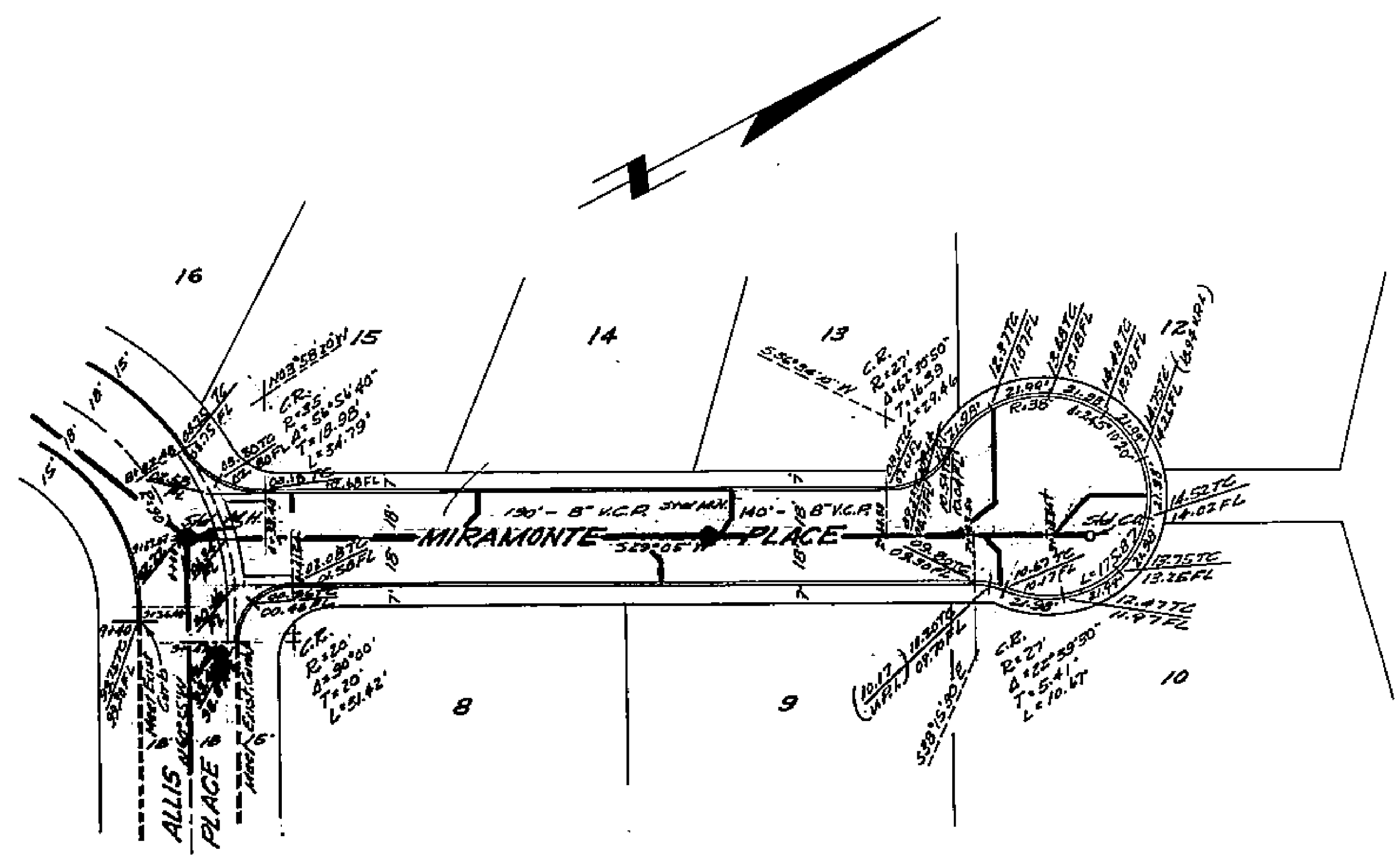
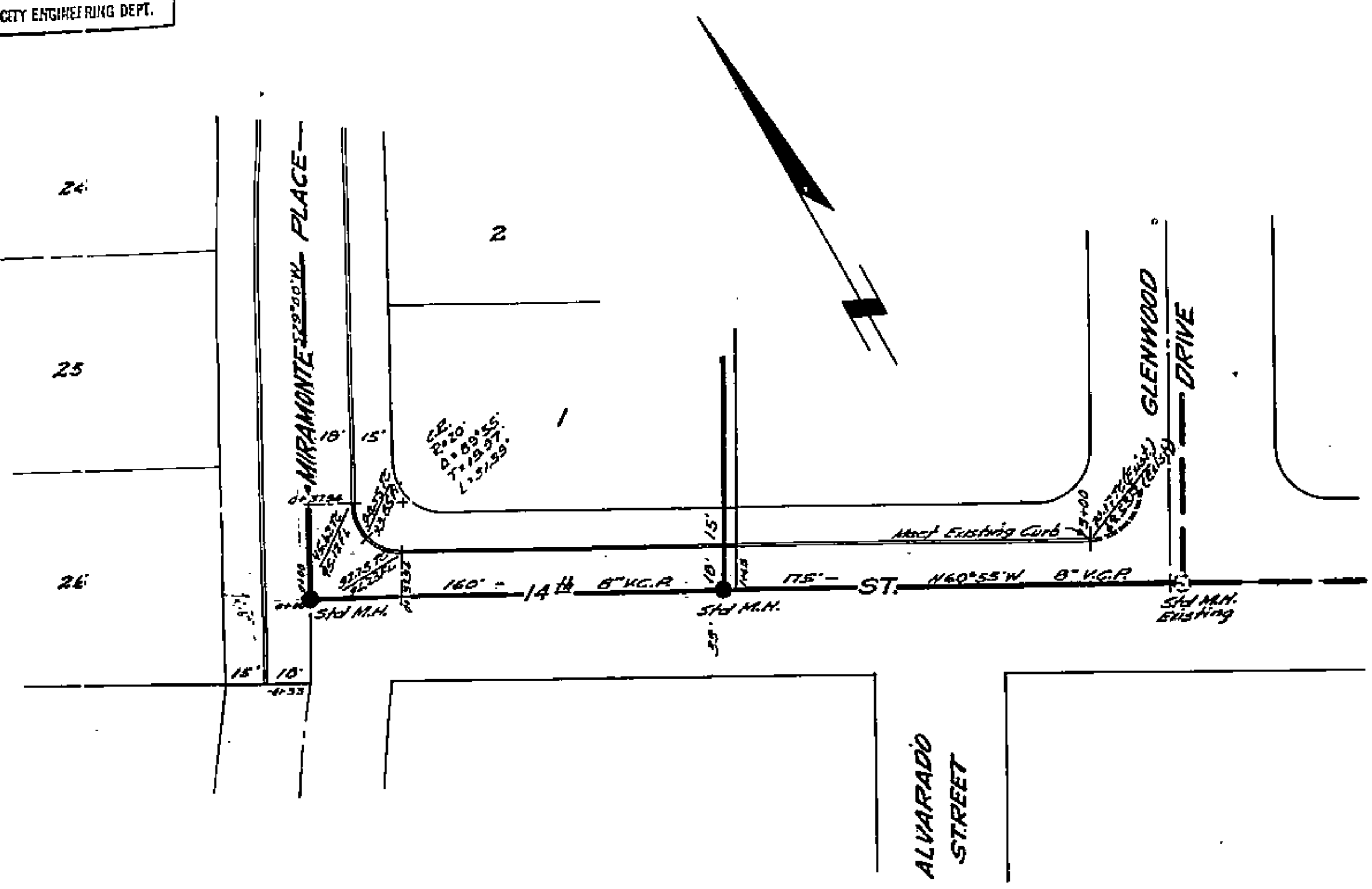
MIRAMONTE PLACE
ALLIS PLACE
MOUNT RUBIDOUX PARK - UNIT NO 4
October 1954 J.E. DAVIDSON, IN.C.E.
Scale: Hor. 1" = 40'
Vert. 1" = 4'

PROPERTY OF
CITY OF RIVERSIDE
CITY ENGINEERING DEPT.

PROPERTY OF
CITY OF RIVERSIDE
CITY ENGINEERING DEPT.

890
11
1514

MADE IN U.S.A.
CLEARPRINT PAPER CO.
CLEARPRINT, BROWN PLAN PLATE A
CLEARPRINT, PROFILE BROWN PLATE A
CLEARPRINT, PROFILE BROWN PLATE A



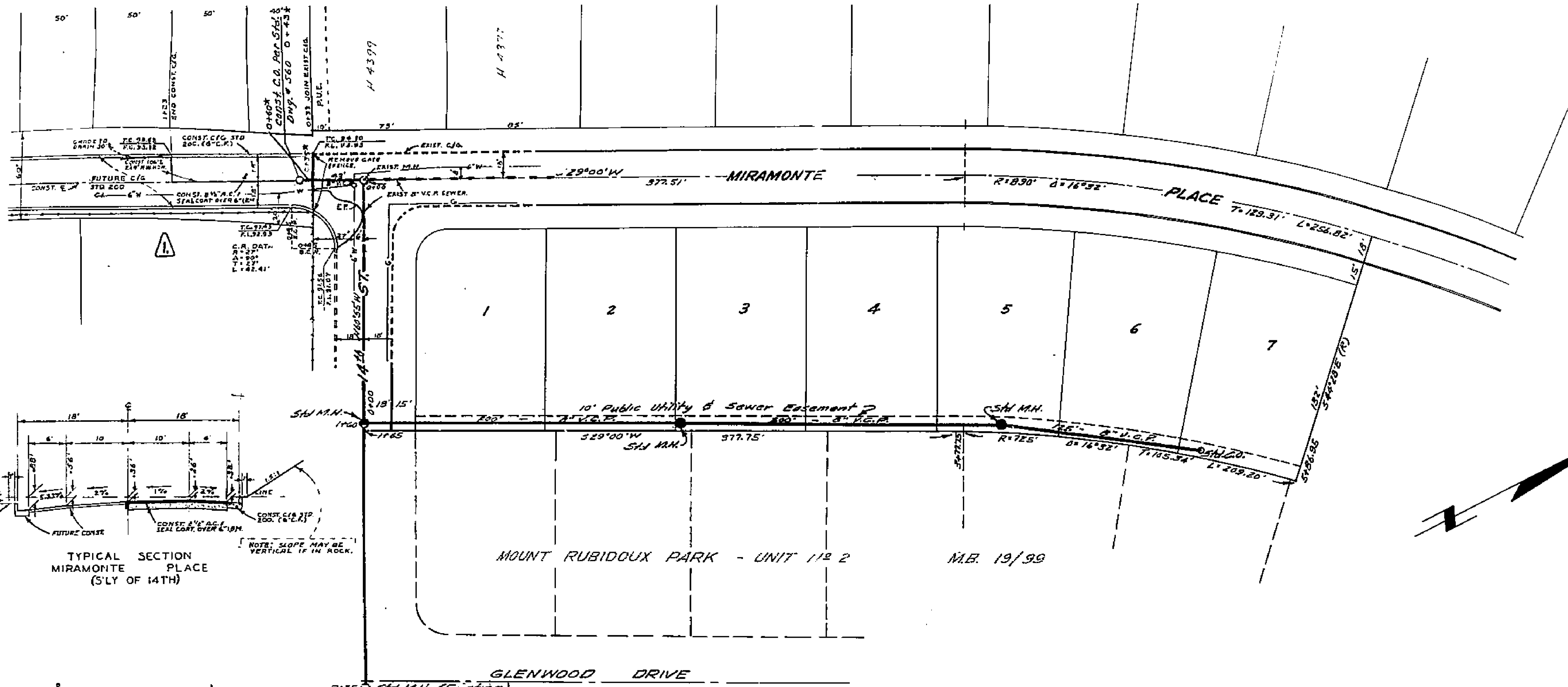
SHEET 2 OF 3 SHEETS

Bench Mark
Brass cap in concrete
N.E. Cor. 14th St & Popper St. Elev. 857.62

Approved M. H. Irvine
City Engineer

PLAN & PROFILE
14th STREET
MIRAMONTE PLACE
MOUNT RUBIDOUX PARK - UNIT NO 2
October 1954 JEDAHIDSON, C.E.
Scale: Hor. 1"=40'
Vert. 1"=4'

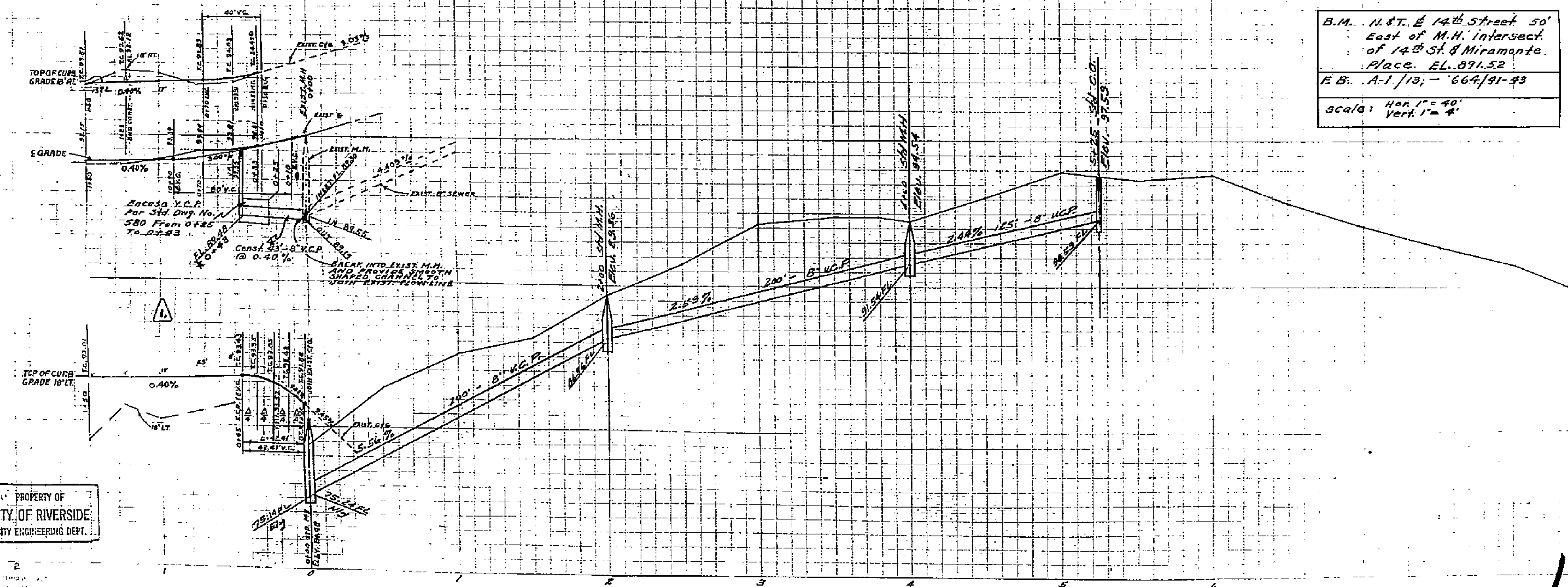
1514



- NOTES:
- 1 All construction shall be in accordance with Standards and Specifications No. 461 of the City of Riverside Dept. of Public Works.
 - 2 Length and Location of Lateral to be Determined in the Field.
 - 3 Cast Iron Pipe may be substituted for U.C.P. and Encasement.

REVISIONS		CITY OF RIVERSIDE, CALIFORNIA DEPARTMENT OF PUBLIC WORKS
MARK	DATE	
Δ	10-22-41	ADDED STREET SEWER CONDUIT MOUNT RUBIDOUX PARK - UNIT 112 2.
*	6-12-42	As Built Sewer, H. 848

DESIGNED BY	CHECKED BY	APPROVED BY
DRAWN BY		<i>M. J. Davis</i>
RECOMMENDED BY	<i>A. R. J. Dahl</i>	DIRECTOR OF PUBLIC WORKS
ASSISTANT CITY ENGINEER		DATE 1/2/62



B.M. N.T. E 14th Street 50'
East of M.H. Intersect.
of 14th St. & Miramonte
Place. EL. 891.52
F.B. A-1/13; - 664/91-43
Scale: Hor. 1" = 40'
Vert. 1" = 4'

Approved *M. J. Davis*
City Engineer

PLAN & PROFILE
SEWER LINE
(Rear of Lots 1 to 7)
MOUNT RUBIDOUX PARK - UNIT NO 2
October 1954 J.E. DAVIDSON, E.
Scale: Hor. 1" = 40'
Vert. 1" = 4'

1514