

NOTE
* CONTRACTOR MUST UNCOVER EXISTING SEWER (60") HAVE CITY CREWS TAKE ELEV. AT END OF PIPE BEFORE CUT SHEET CAN BE ISSUED

NOTE:
1. Lot areas to be laid flat.
2. F.L. elevation of existing C.O. on Bandini Ave. to be determined prior to laying sewer.

PLAN & PROFILE
BANDINI AVENUE
ELMWOOD COURT
KENDALL PARK
December 1954 J.F. DAVIDSON, C.E.
Scale: Hor. 1" = 40'
Vert. 1" = 4'

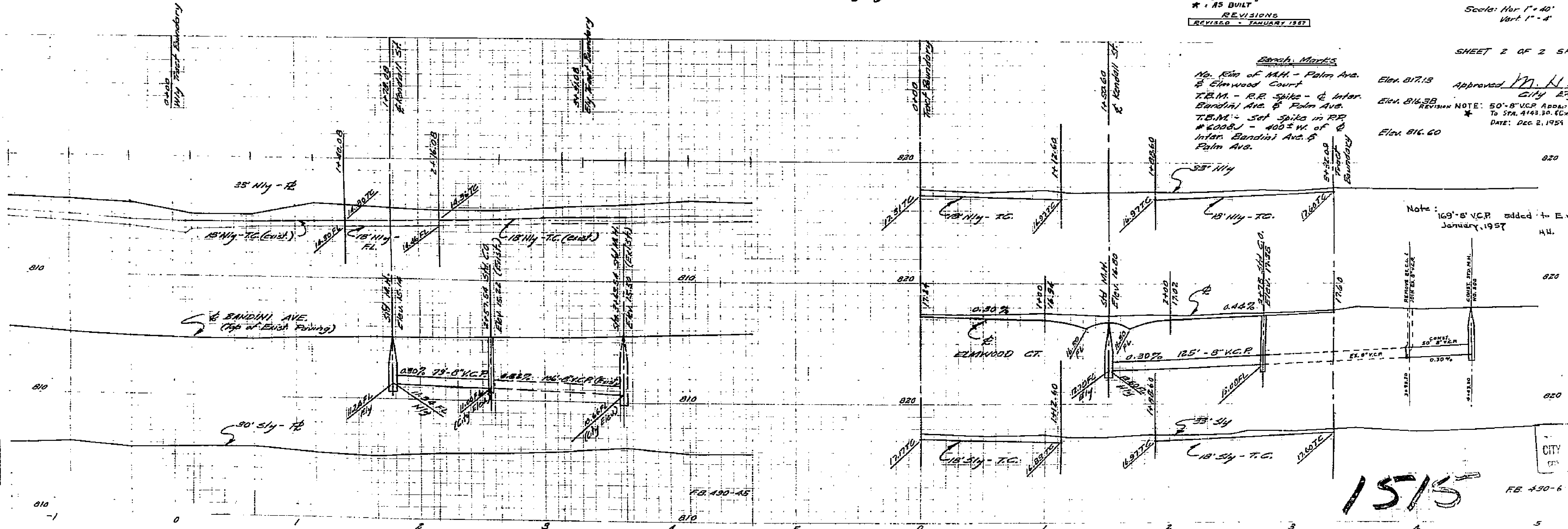
* AS BUILT
REVISIONS
REVISED - JANUARY 1957

SHEET 2 OF 2 SHEETS

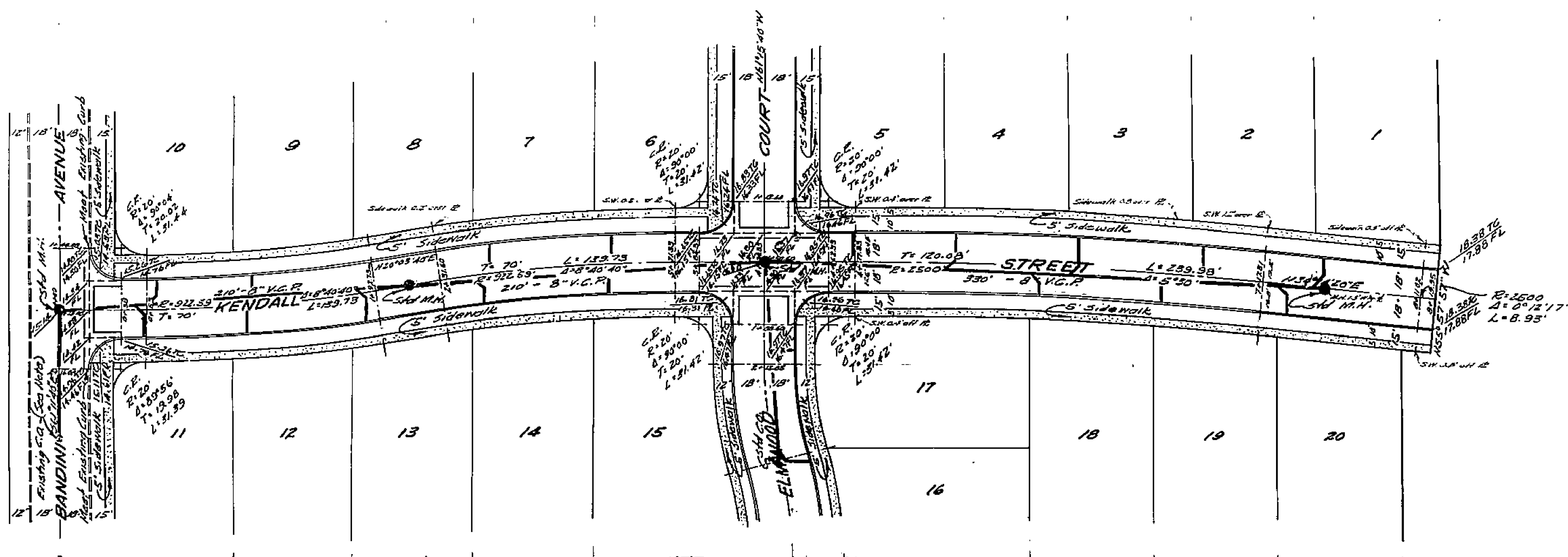
Remarks
No. 10 of M.H. - Palm Ave. & Elmwood Court
T.B.M. - R.R. Spike - @ Inter. Bandini Ave. & Palm Ave.
T.B.M. - Set spike in RR #40081 - 400± W. of @ Inter. Bandini Ave. & Palm Ave.

Elev. 817.13
Elev. 816.58
Elev. 816.60
Approved M.H. Davidson
City Engineer
REVISION NOTE: 50" 8" V.C.P. Added SPA 3193.30 To SPA. 4143.30. (CWS) P.M. E.L.
DATE: DEC. 2, 1954
J.F.D.

Note: 169'-8" V.C.P. added to Elmwood Ct. January, 1957
H.U.



1515



NOTE:
 1. Laterals to be laid flat.
 2. F.L. elevation of existing C.O. on Bandini Ave. to be determined prior to laying sewer.

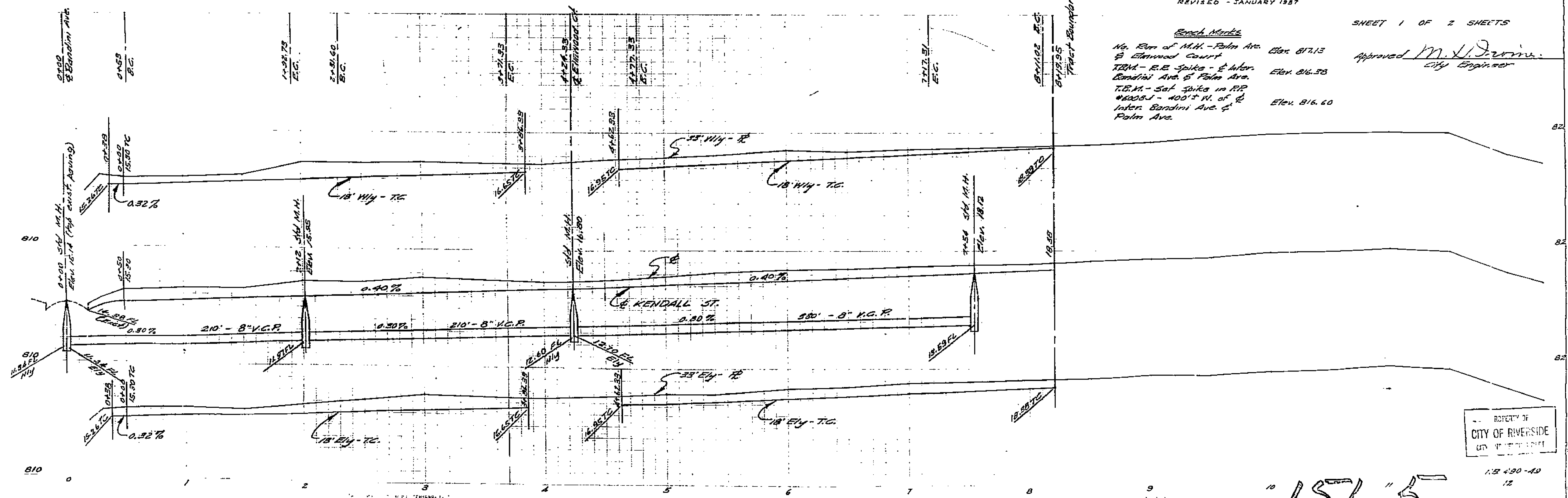
PLAN & PROFILE
 KENDALL STREET
 KENDALL PARK
 December 1954 J.F. DAVIDSON, C.E.
 Scale: Hor. 1" = 40'
 Vert. 1" = 8'

REVISED - JANUARY 1957

SHEET 1 OF 2 SHEETS

Bench Marks
 No. Run of M.H. - Palm Ave. Elev. 817.13
 & Elwood Court
 TBM - R.E. Spike - Inter. Bandini Ave. & Palm Ave. Elev. 816.38
 T.B.M. - Sat. Spike in R.P. #1203-1 - 400' S.W. of Inter. Bandini Ave. & Palm Ave. Elev. 816.60

Approved M. J. Irvine
 City Engineer



1575