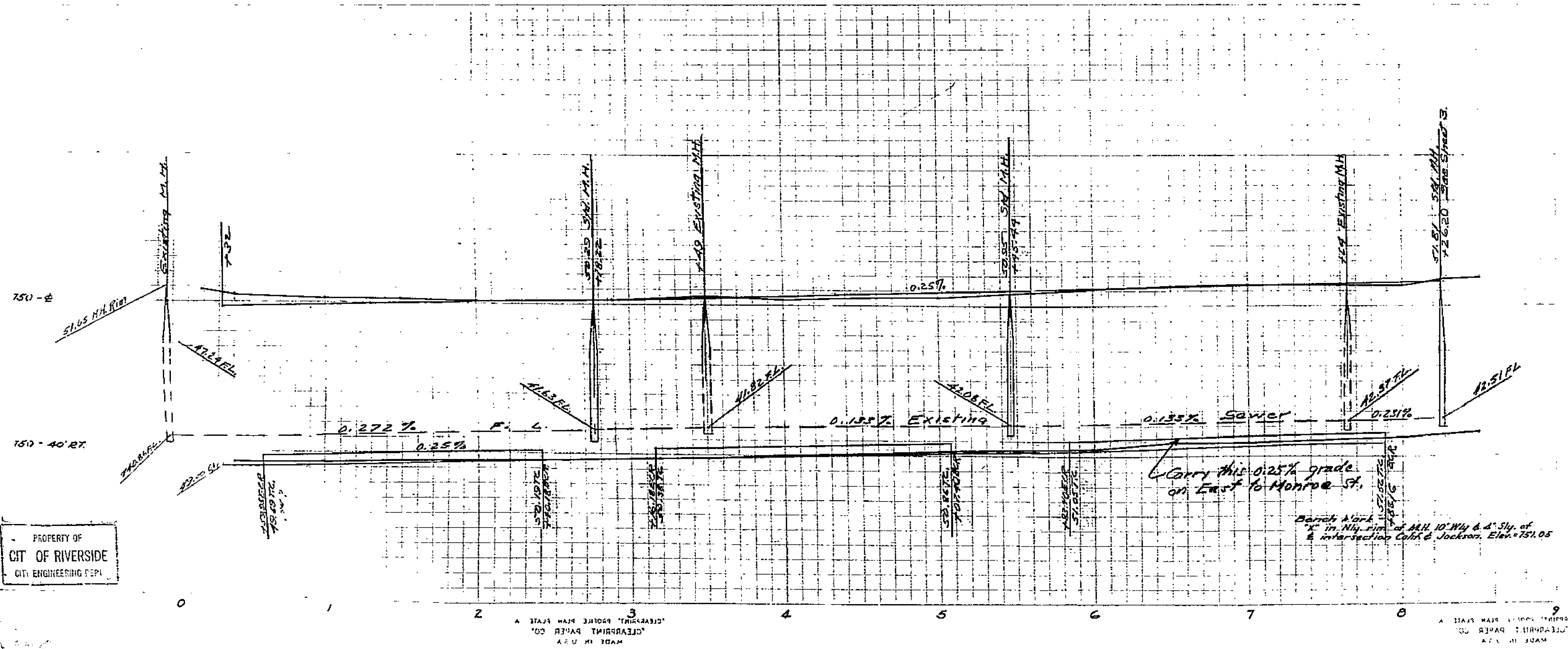


SHEET 2 OF 4



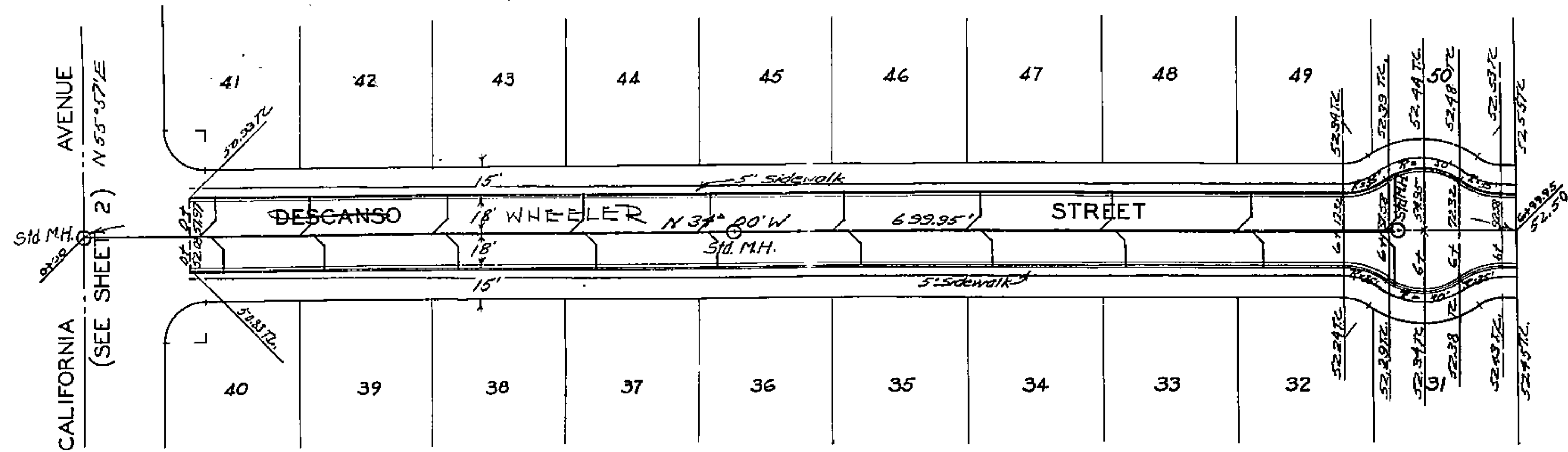
PLAN AND PROFILE
CALIFORNIA STREET
NESSEL TRACT

DECEMBER 1954 J.F. DAVIDSON, C.E.
SCALE - HORIZ. 1" = 40'
VERT. 1" = 4'

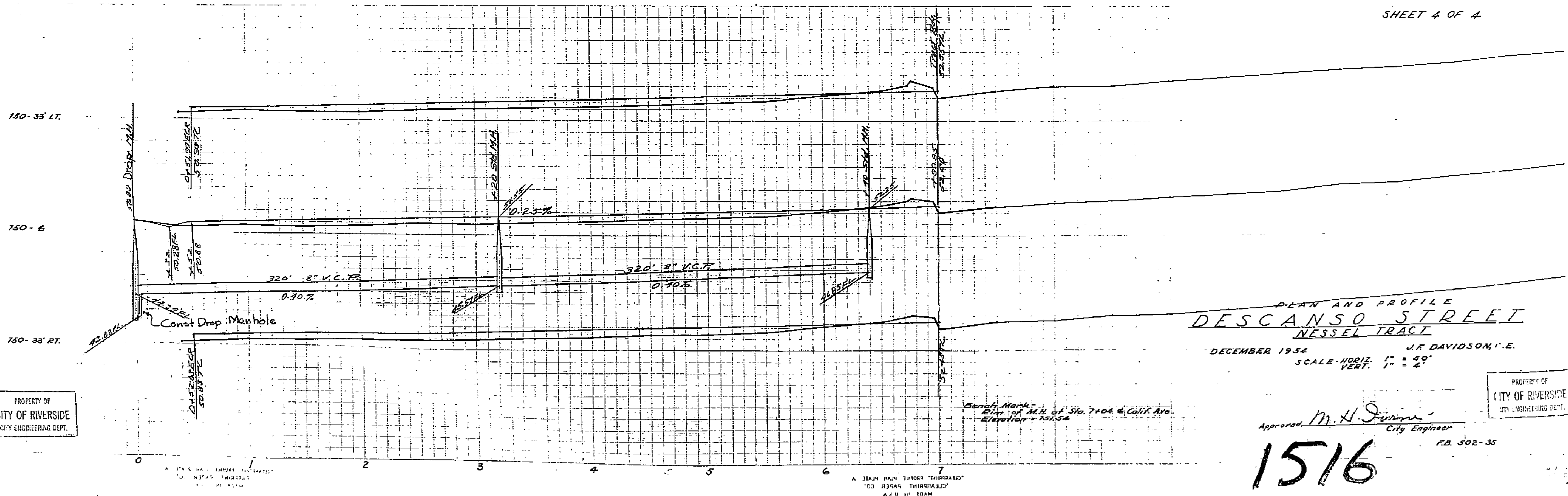
Approved: *M.D. Swine*
City Engineer

1516

RB. 502-4



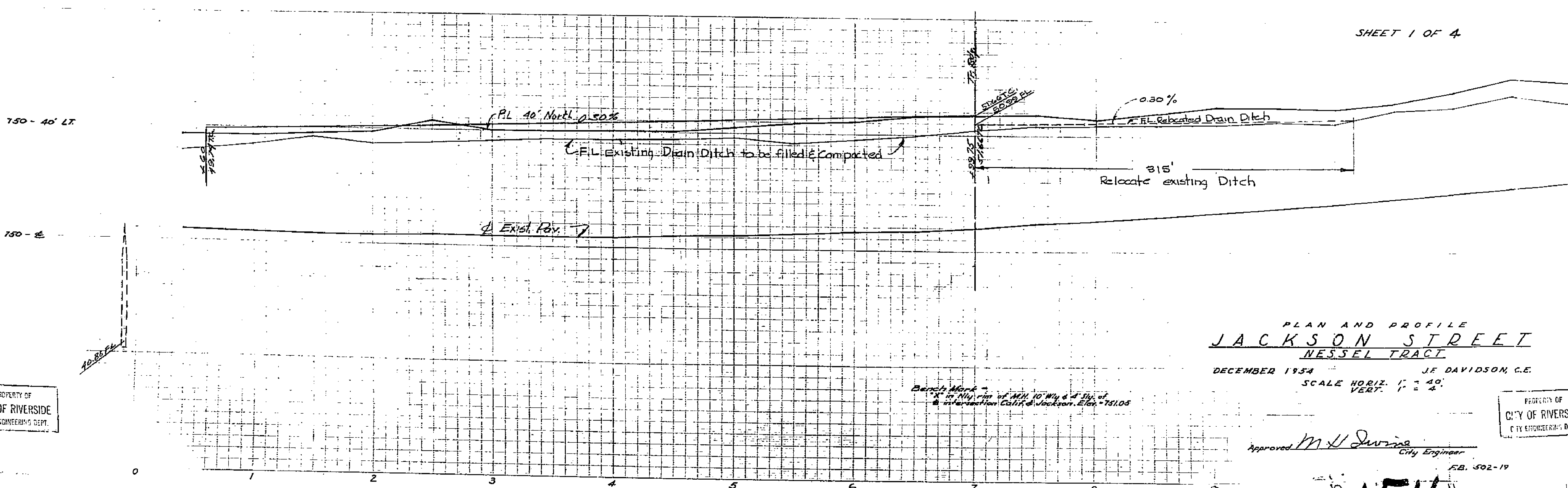
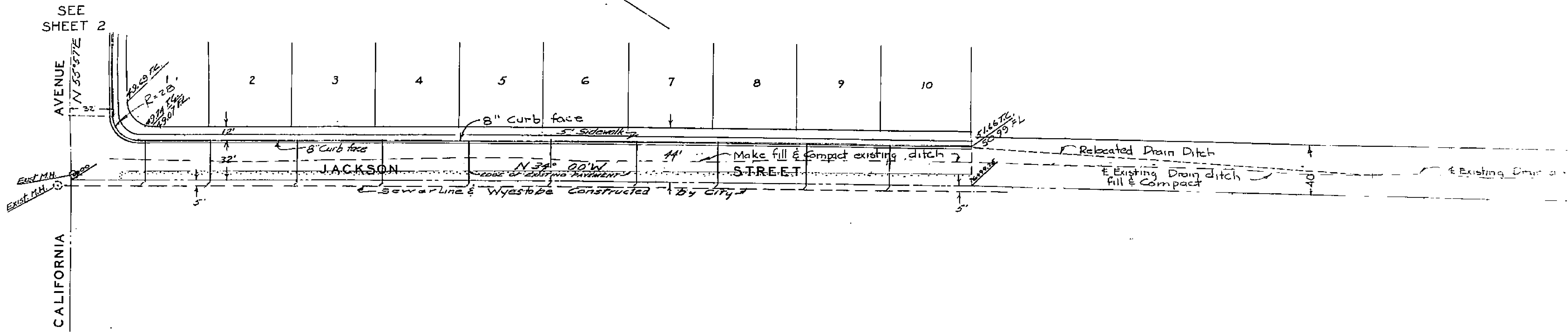
SHEET 4 OF 4



PLAN AND PROFILE
DESCANSO STREET
NESSEL TRACT
DECEMBER 1954 J.F. DAVIDSON, C.E.
SCALE - HORIZ. 1" = 40'
VERT. 1" = 4'

Approved M. H. Jensen
City Engineer

1516



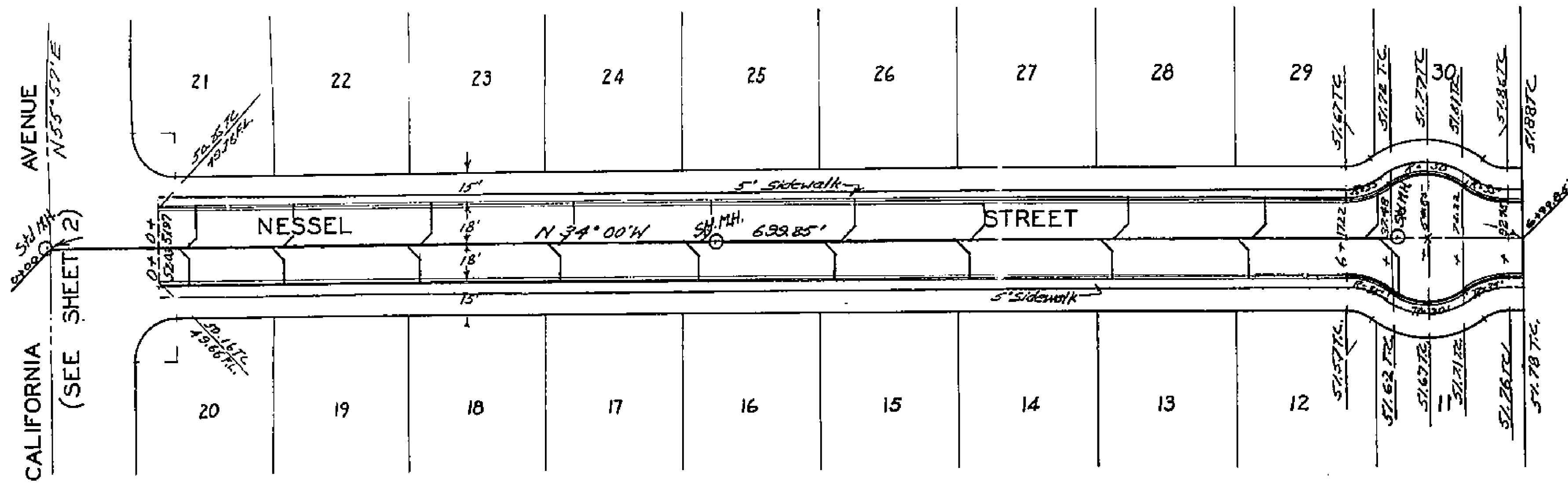
SHEET 1 OF 4

PLAN AND PROFILE
JACKSON STREET
NESSEL TRACT
DECEMBER 1954 JF DAVIDSON, C.E.
SCALE HORIZ. 1" = 40'
VERT. 1" = 4'

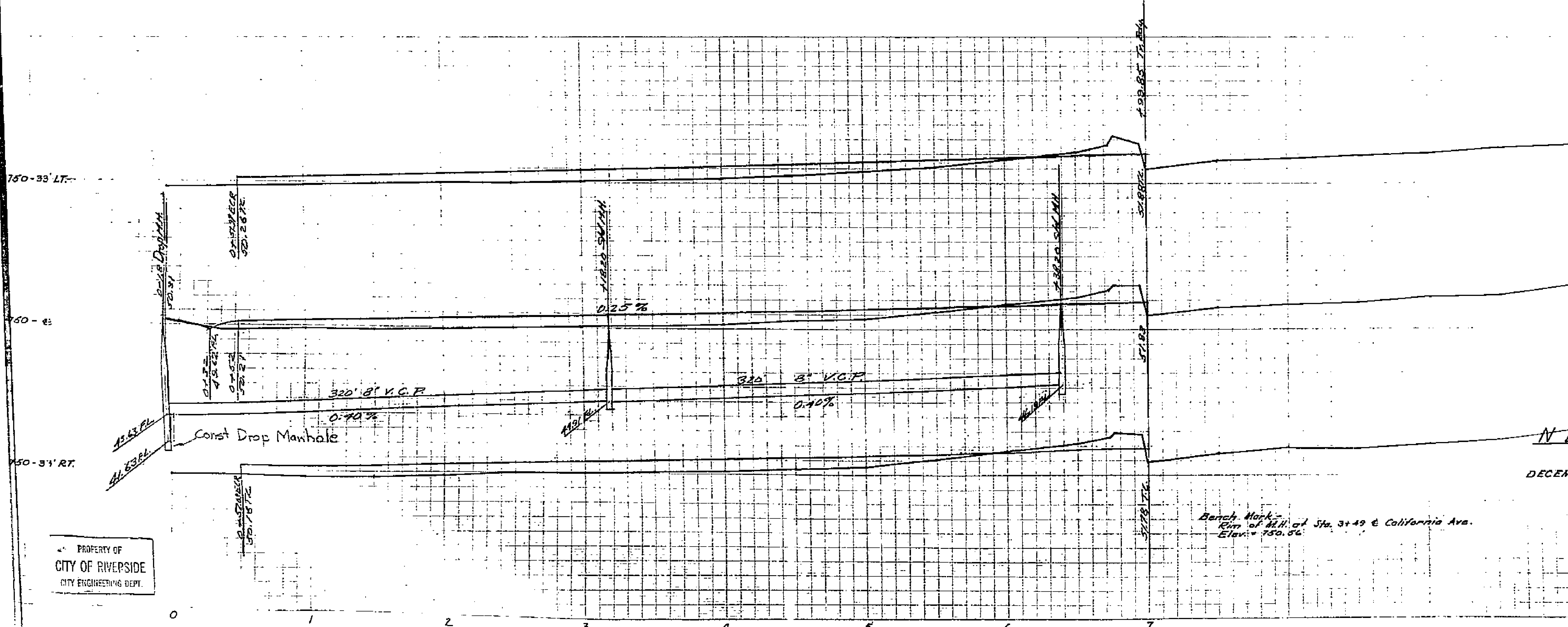
Approved *M.H. Durine*
City Engineer

F.B. 502-19

1516



SHEET 3 OF 4



PLAN AND PROFILE
NESSEL STREET
NESSEL TRACT
DECEMBER 1954 J.F. DAVIDSON, C.E.
SCALE - HORIZ. 1" = 40'
VERT. 1" = 4'

Bench Mark -
Rim of Manhole at Sta. 3+49 @ California Ave.
Elev. = 750.56

Approved M.H. Irvine
City Engineer

1516

R.B. 502-31