

ASSESSMENT NO. 406
DIAGRAM

EXHIBITING MYERS STREET SANITARY SEWER DISTRICT

IN THE CITY OF RIVERSIDE ON WHICH WORK HAS BEEN DONE UNDER THE OFFICIAL CONTRACT OF THE SUPERINTENDENT OF STREETS OF SAID CITY WITH HENRY B. STEVENS DATED JULY 22 1955 FOR THE CONSTRUCTION OF A SANITARY SEWER AND APPURTENANCES IN MYERS STREET BETWEEN MAGNOLIA AVENUE AND INDIANA AVENUE AS IS MORE PARTICULARLY DESCRIBED IN SAID CONTRACT TO WHICH REFERENCE IS HEREBY MADE FOR FURTHER PARTICULARS; SAID DIAGRAM ALSO SHOWS THE RELATIVE LOCATION OF EACH LOT PORTION OF LOT PIECE OR PARCEL OF LAND ASSESSED FOR THE WORK DONE NUMBERED IN CIRCLES TO CORRESPOND TO THE RED INK NUMBERS IN THE ASSESSMENT HEREIN FIGURES NEXT TO PROPERTY LINES SHOW LENGTH OF SAID LINES IN FEET. THE MARK (,) MEANS FEET. PROPERTY LINES THAT DIFFER FROM THE RECORDED SUBDIVISIONS ARE SHOWN BY BROKEN LINES. THE DISTRICT BENEFITED IS BOUNDED BY A HEAVY DASHED LINE PROPERTY COVERED BY THIS ASSESSMENT IS SHOWN ON THE FOLLOWING RECORDED MAPS:

VILLAGE OF ARLINGTON M.B. 1-62 REC. S.B. CO.
PRIMROSE SUBDIVISION " 6-29 " RIV. "
KRUEWIG " 24-99-100 " " "

HEREIN THE LEGEND OF THE DIFFERENT KINDS OF WORK PERFORMED IS SHOWN AS FOLLOWS:

VITRIFIED PIPE SEWER AND MANHOLE 
" " HOUSE CONN LATERALS 
" " WYE BRANCHES 

CITY ENGINEER OF THE CITY OF RIVERSIDE
THE FOLLOWING IS A STATEMENT OF AMOUNTS OF DIFFERENT KINDS OF WORK DONE BY HENRY B. STEVENS UNDER CONTRACT DATED JULY 22 1955 PURSUANT TO RESOLUTION OF INTENTION NO. 6676 ADOPTED BY THE CITY COUNCIL OF THE CITY OF RIVERSIDE ON THE 10TH DAY OF MAY 1955

2140.81 LIN. FT. 8" VIT. CLAY PIPE IN PLACE COMP
76000 " " 4" " " " HO. CON. " "
7 STD. MANHOLES IN PLACE COMPLETE
58 8"x4" VIT. CLAY WYE BRANCHES

AT SAID CITY OF RIVERSIDE THIS 3RD DAY OF OCTOBER 1955

CITY ENGINEER
OF THE CITY OF RIVERSIDE

I HEREBY CERTIFY THAT THE ABOVE WORK WAS DONE IN ACCORDANCE WITH LINES AND GRADES FURNISHED BY ME AND THAT THE DIAGRAM OF THE ASSESSMENT DISTRICT FOR THE SAME IS CORRECT.

CITY ENGINEER
OF THE CITY OF RIVERSIDE

RECORDED AT 8:35 O'CLOCK A.M.
THIS 7TH DAY OF DECEMBER 1955

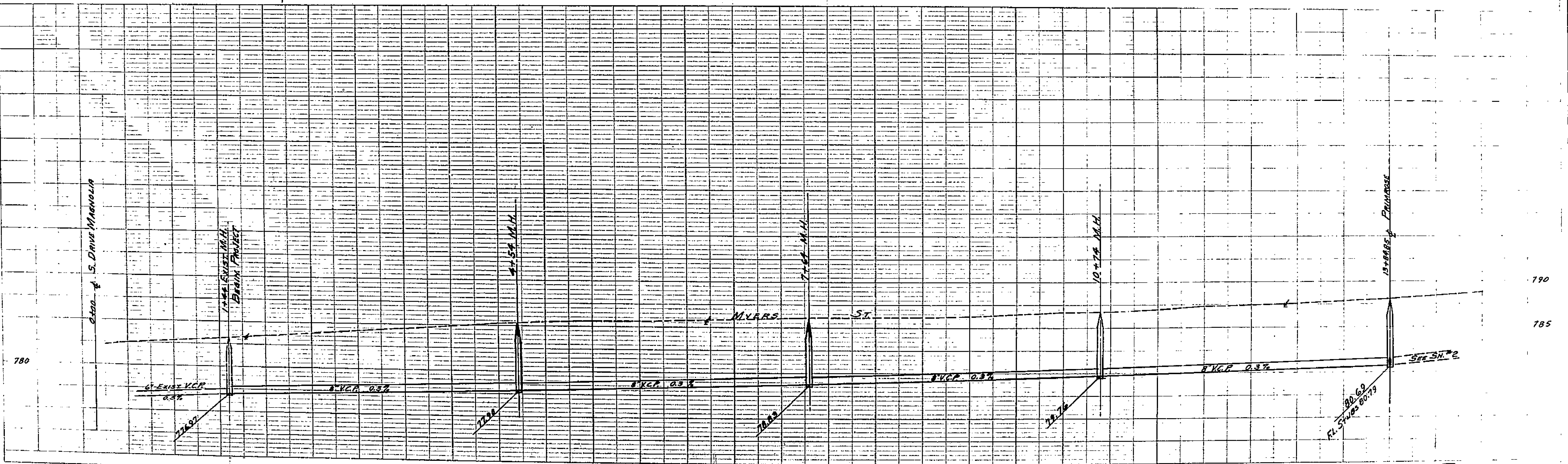
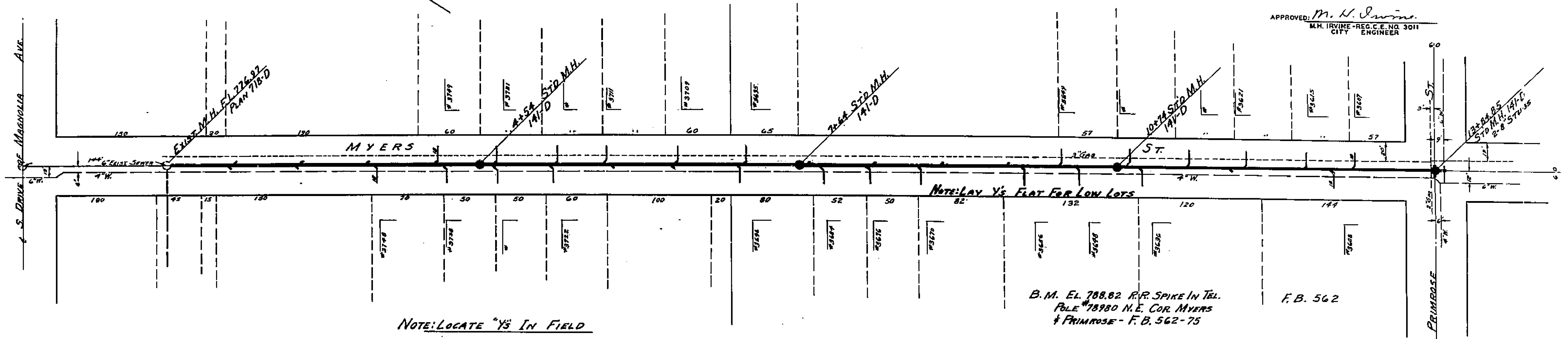
SUPERINTENDENT OF STREETS
OF THE CITY OF RIVERSIDE

1518

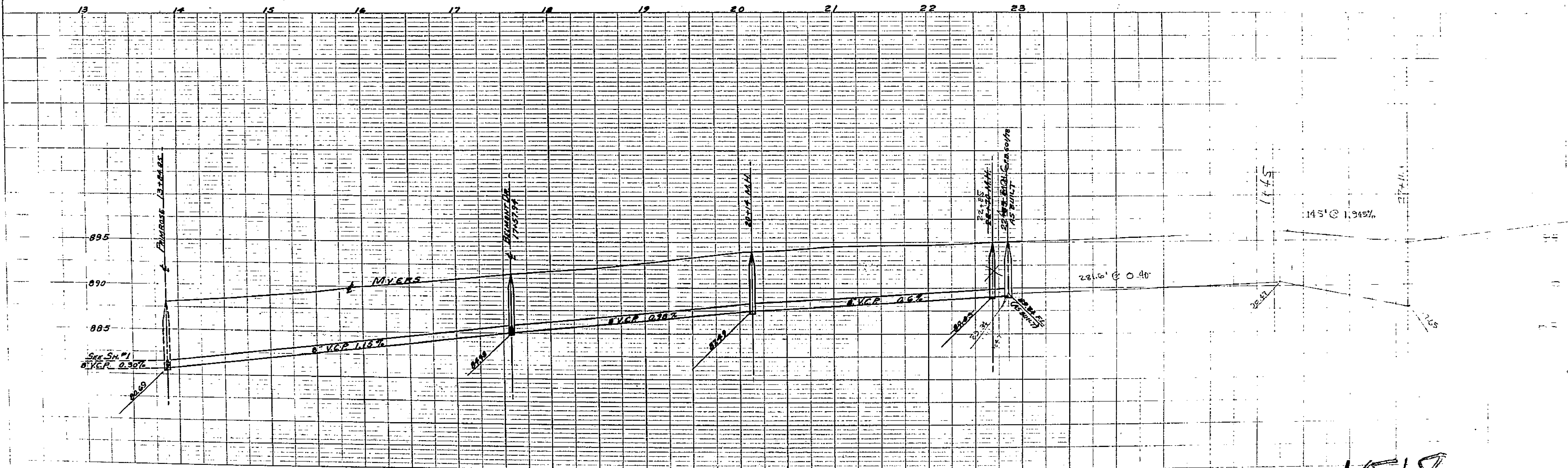
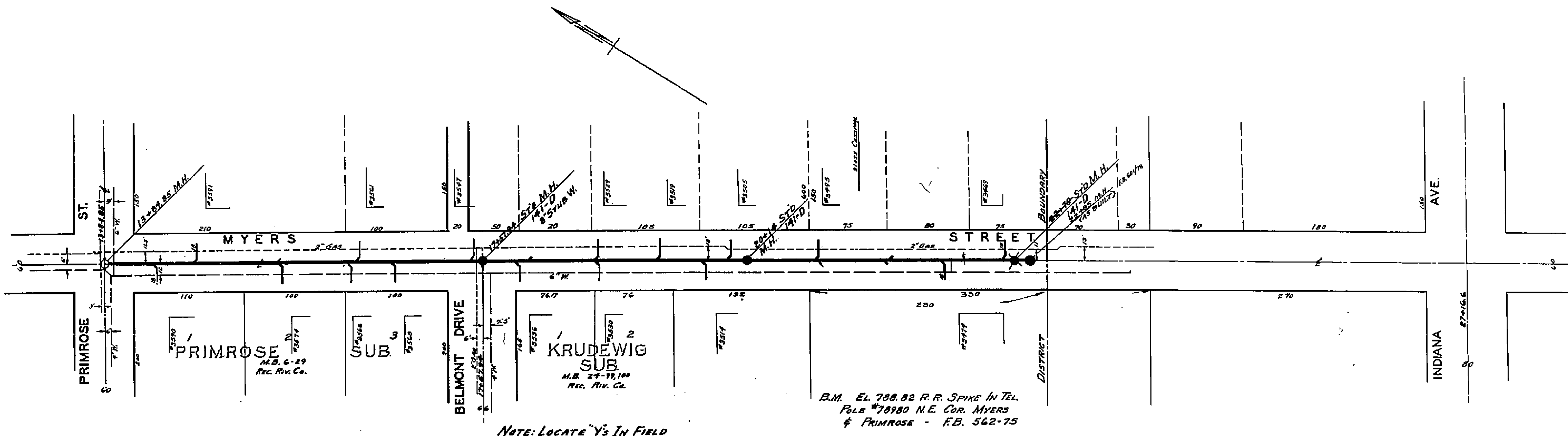
PLAN NO. 1518 SHEET 1 OF 2
 FOR THE CONSTRUCTION OF SANITARY SEWERS
 BET. MAGNOLIA & FREEWAY IN
MYERS ST.
SANITARY SEWER DISTRICT
 RIVERSIDE, CALIFORNIA

SCALE: 1 IN. = 50 FT.
 VER. 1 IN. = 5'
 MARCH 1955

APPROVED: *M. H. Irvine*
 M.H. IRVINE - REG. C.E. NO. 3011
 CITY ENGINEER

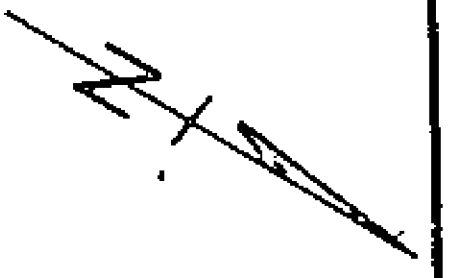


1518



1518

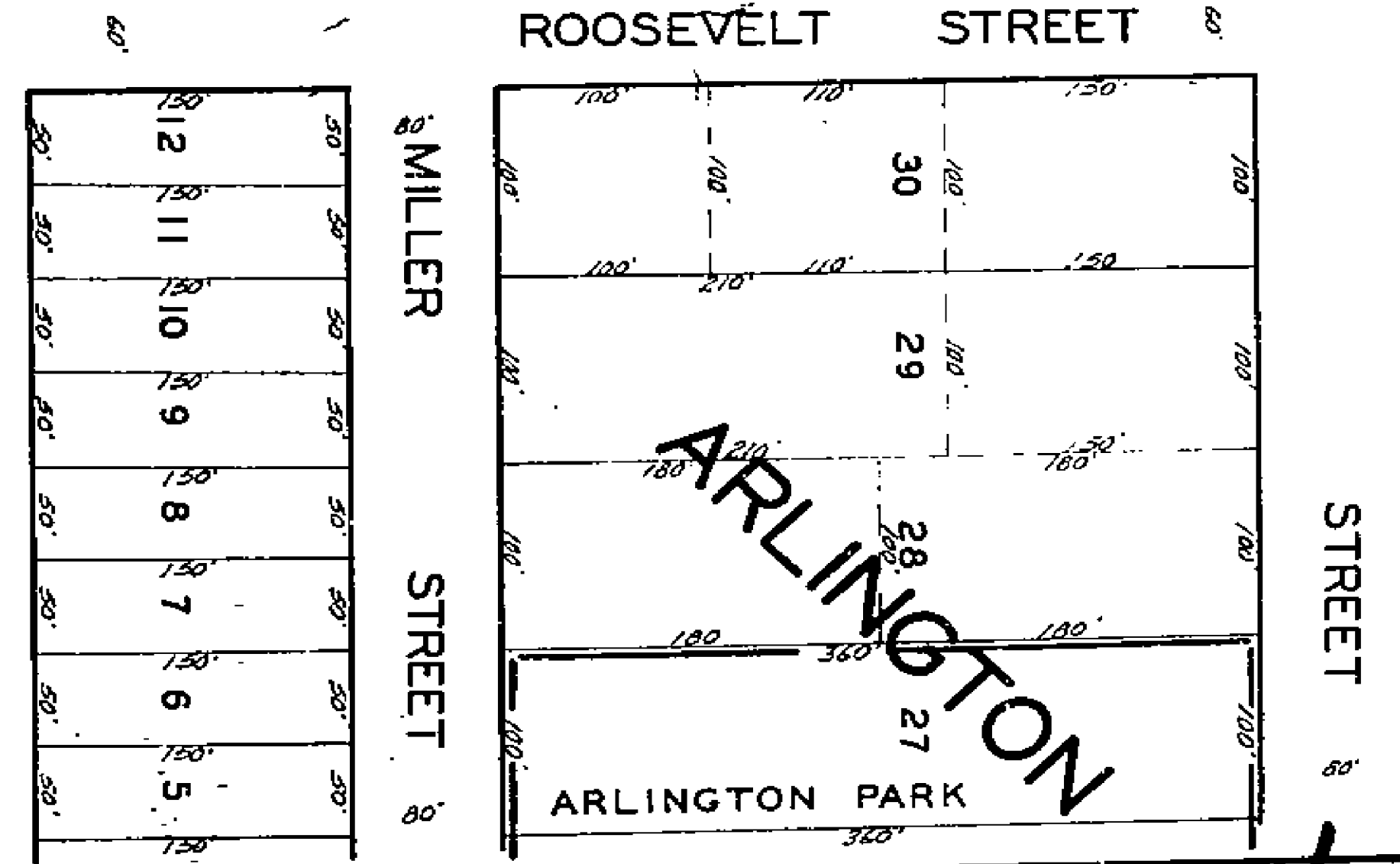
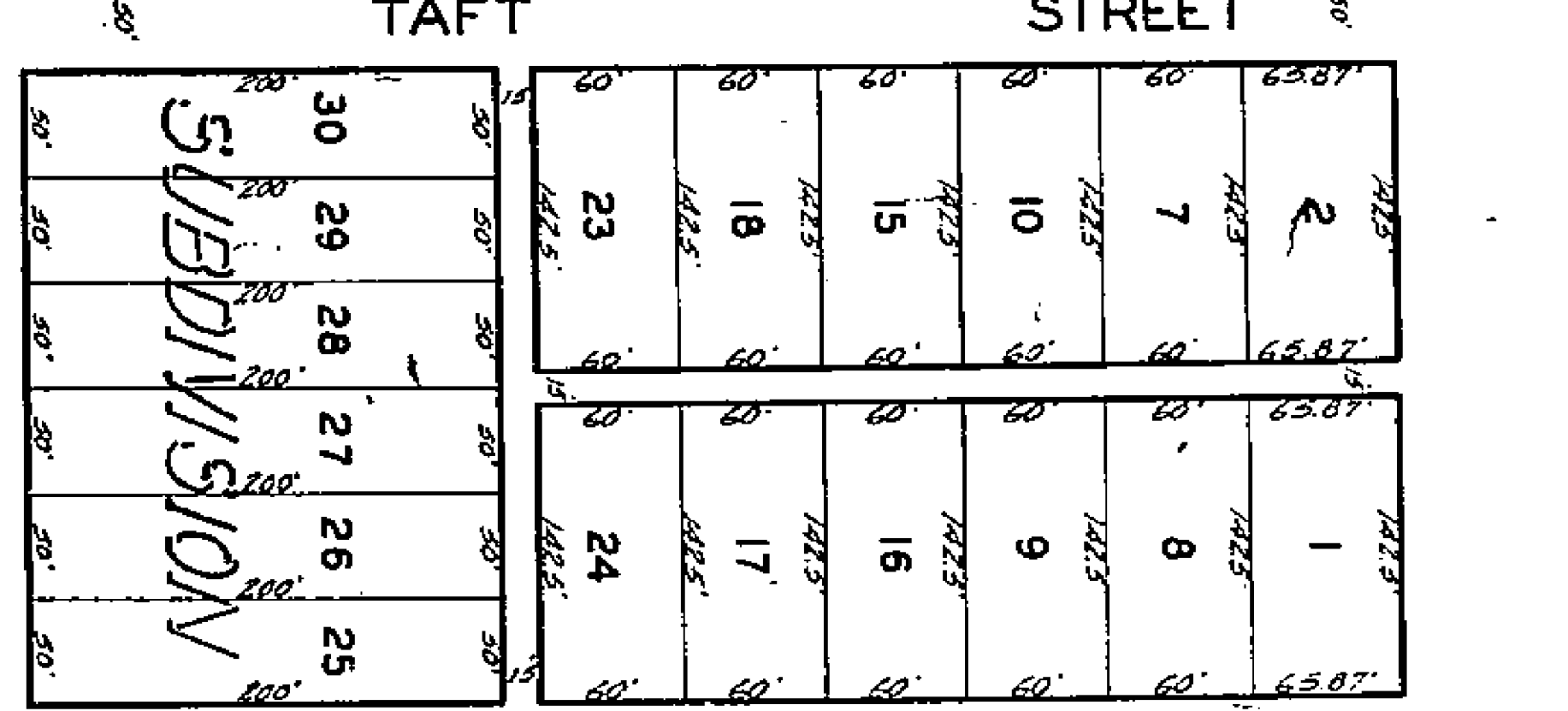
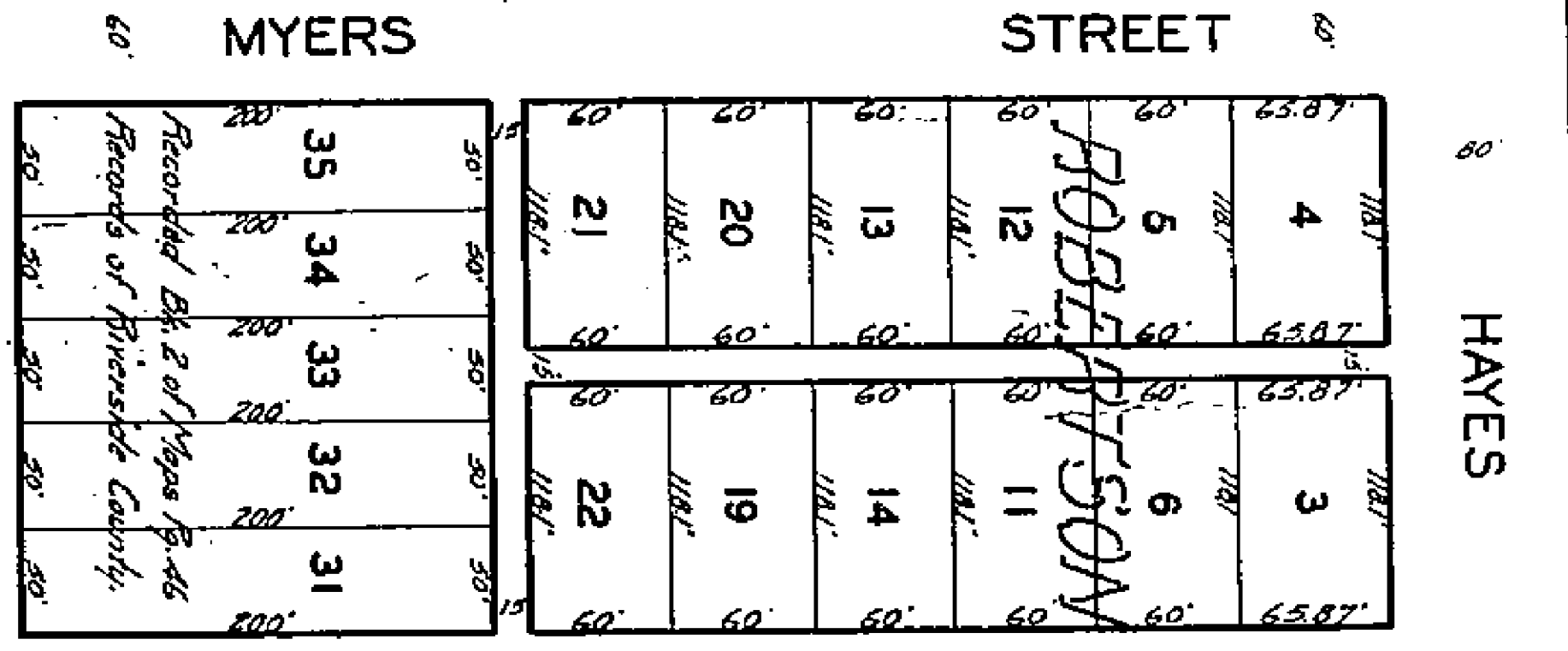
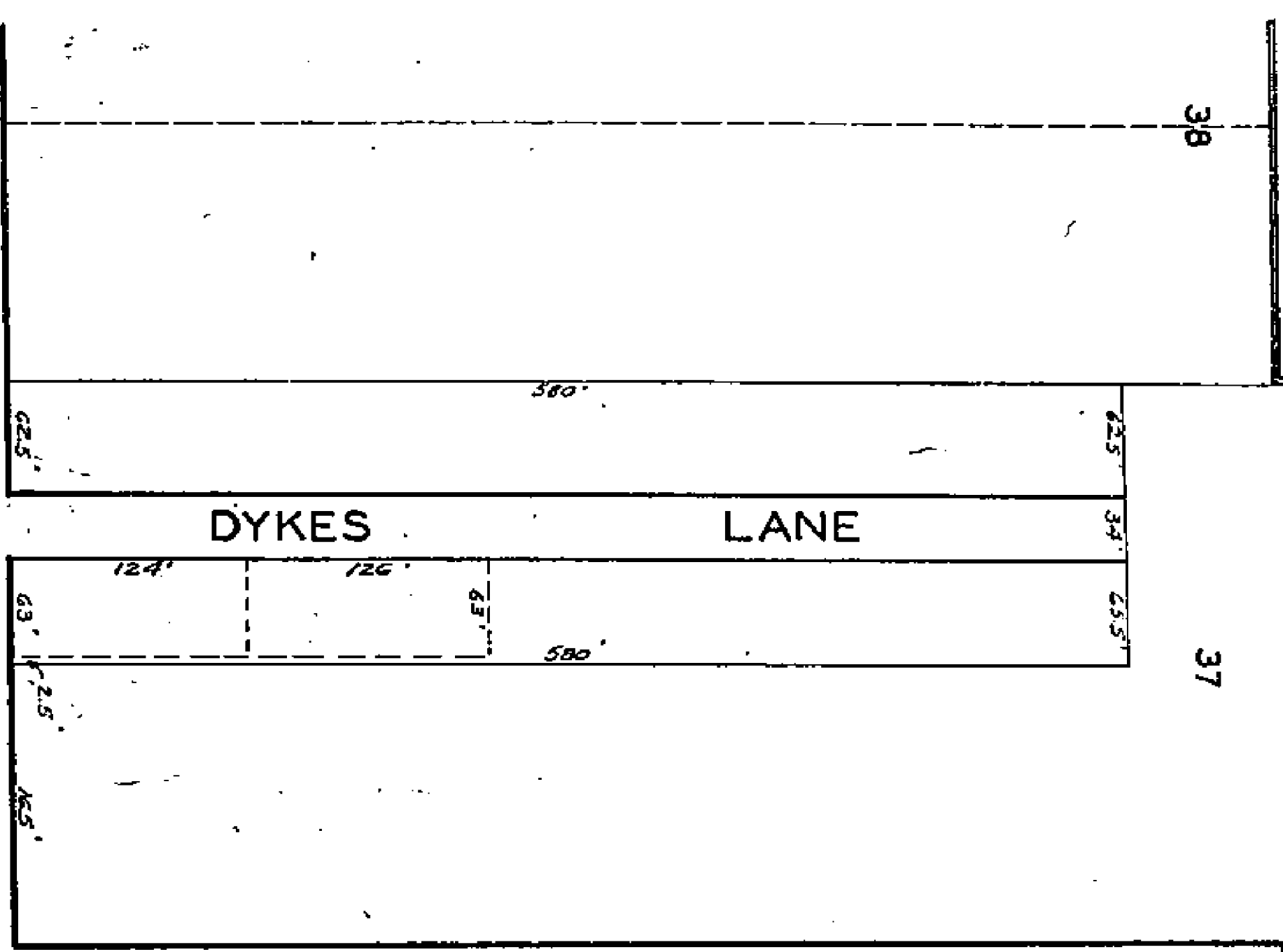
SCALE 1"=100'



COUNTY HOSPITAL
PUBLIC PROPERTY

See Sheet No 204
BLOCK 11
LIBERTY SCHOOL

(RESUBDIVISION OF)
LAW BUREN PARTS
38 39 40 41 42 43 44 45
Records of Riverside County

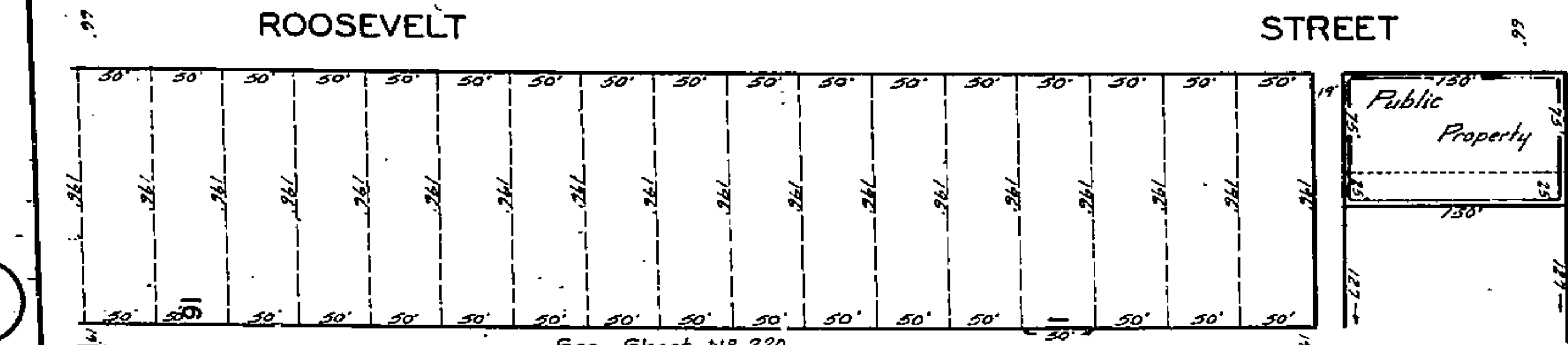
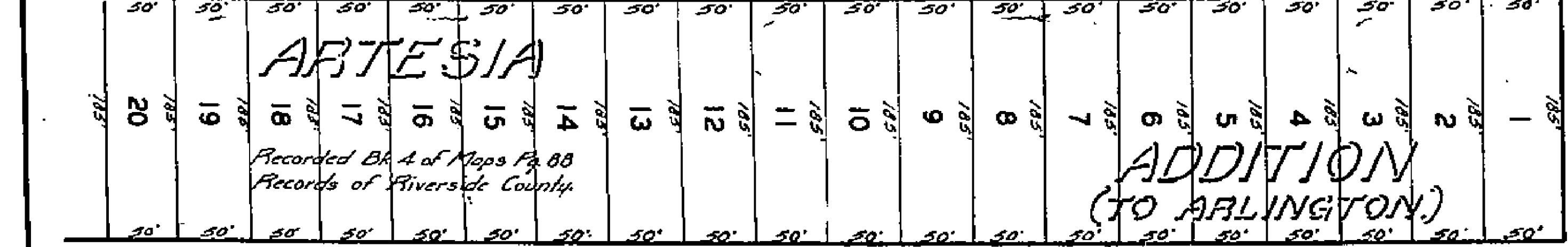
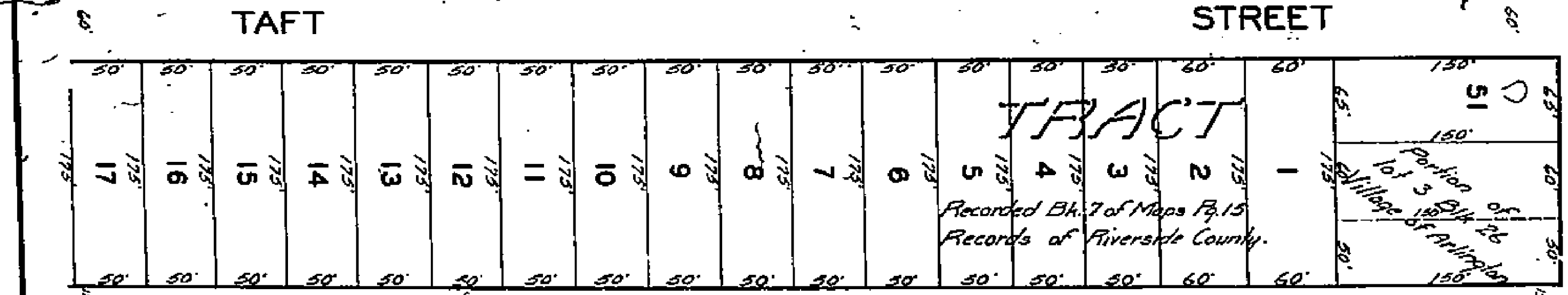
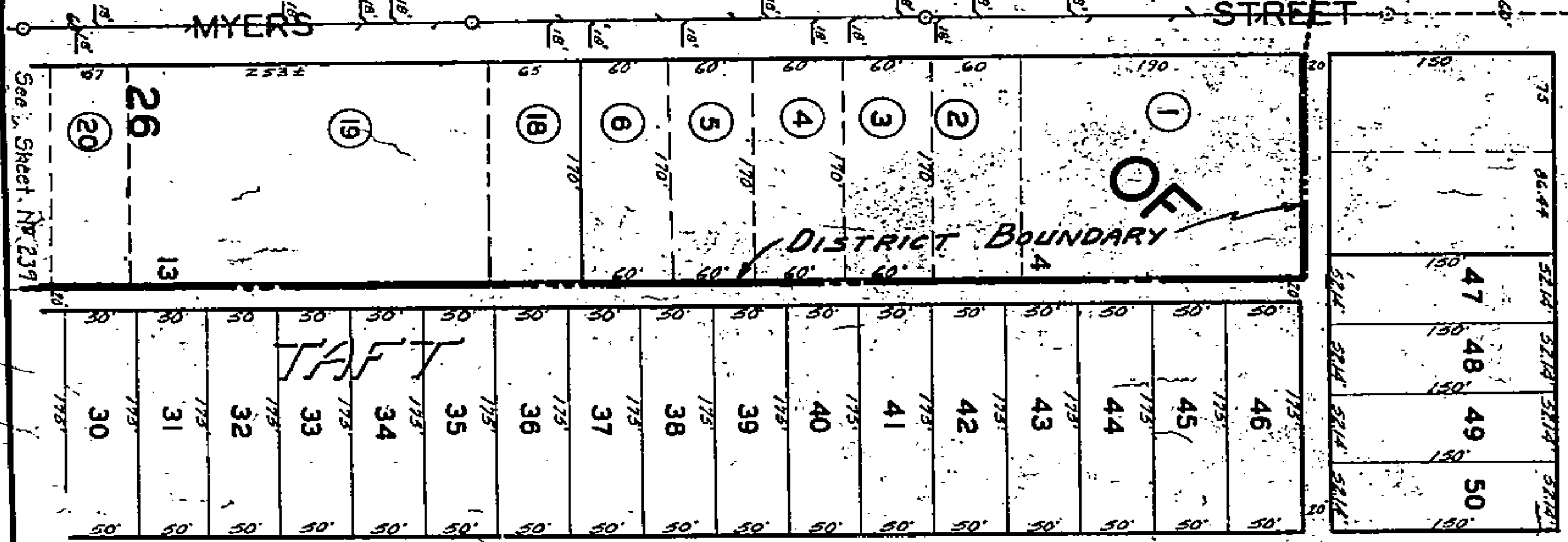
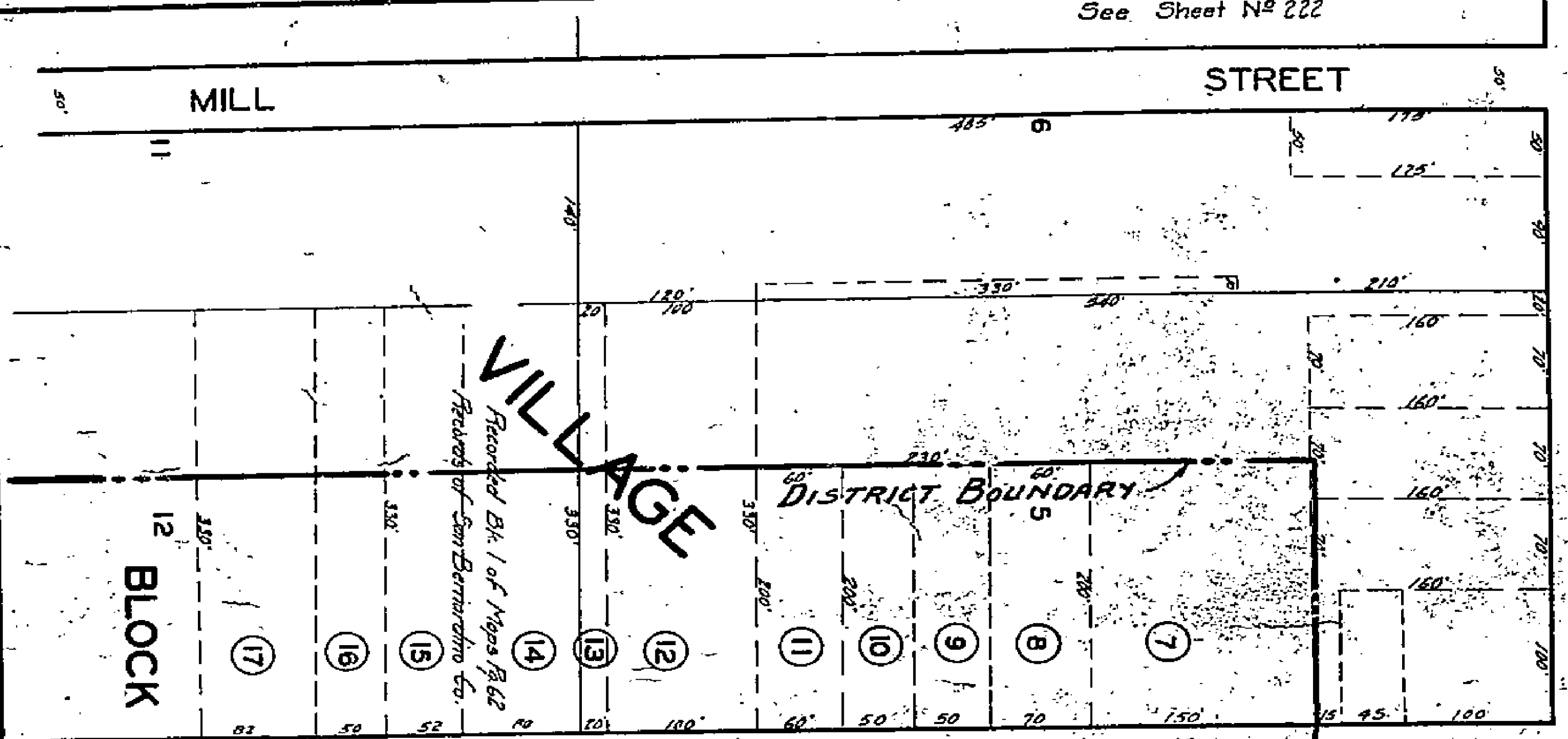


MAGNOLIA AVENUE

PACIFIC ELECTRIC R. R.

AVENUE

See Sheet No 222

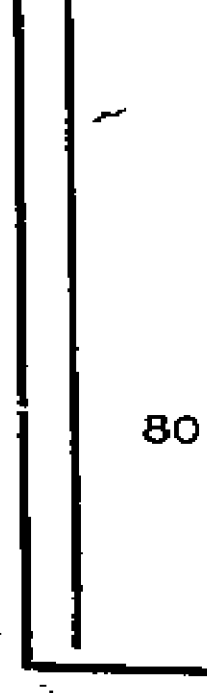
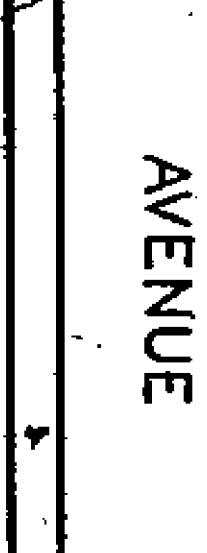
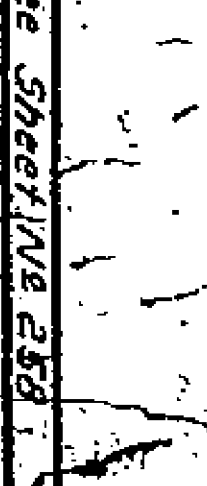
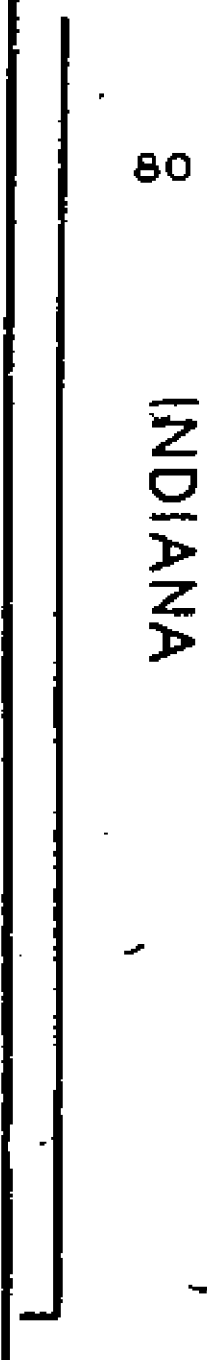
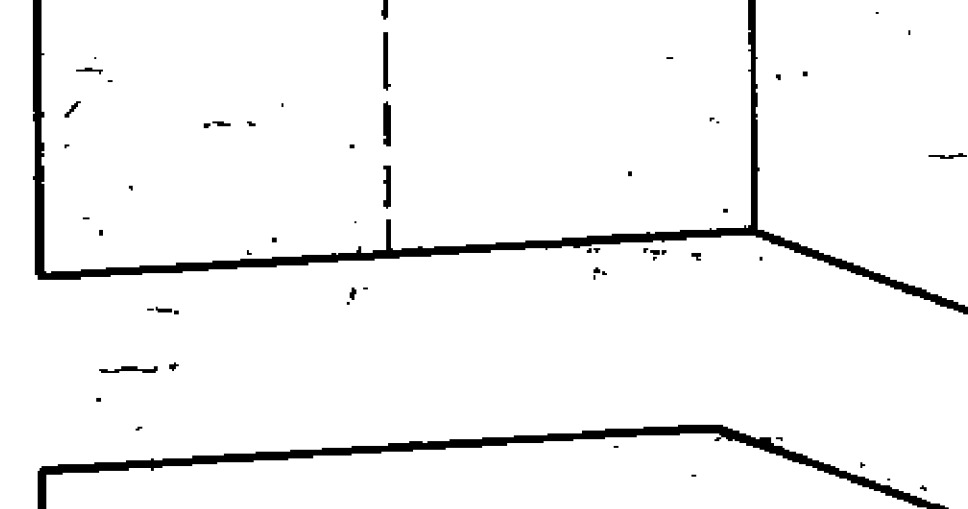
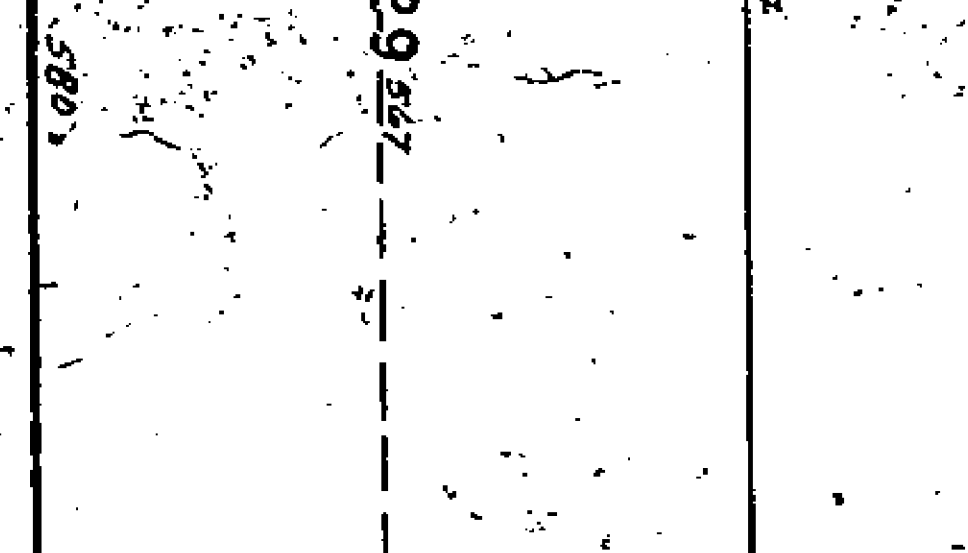
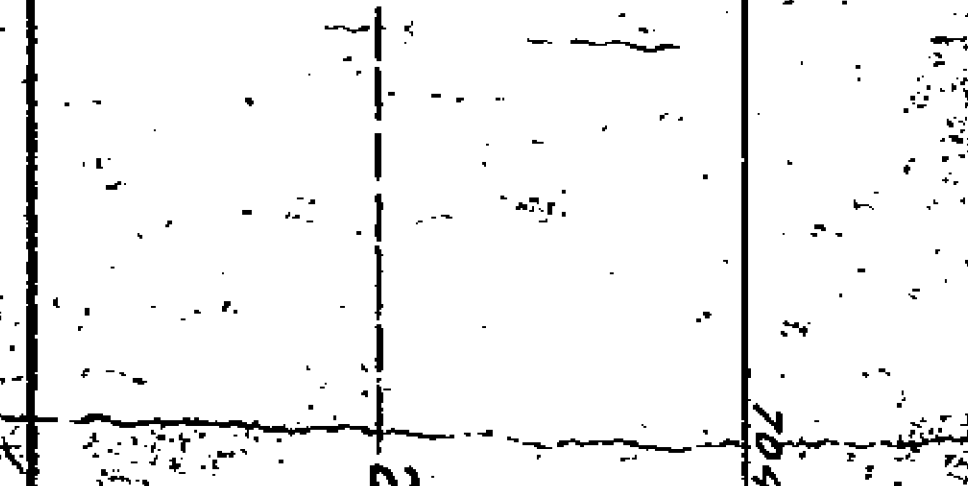
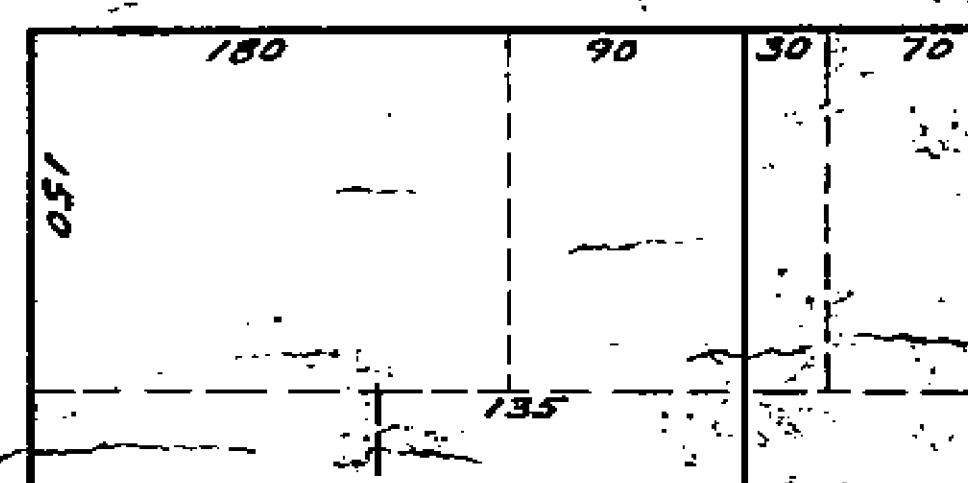
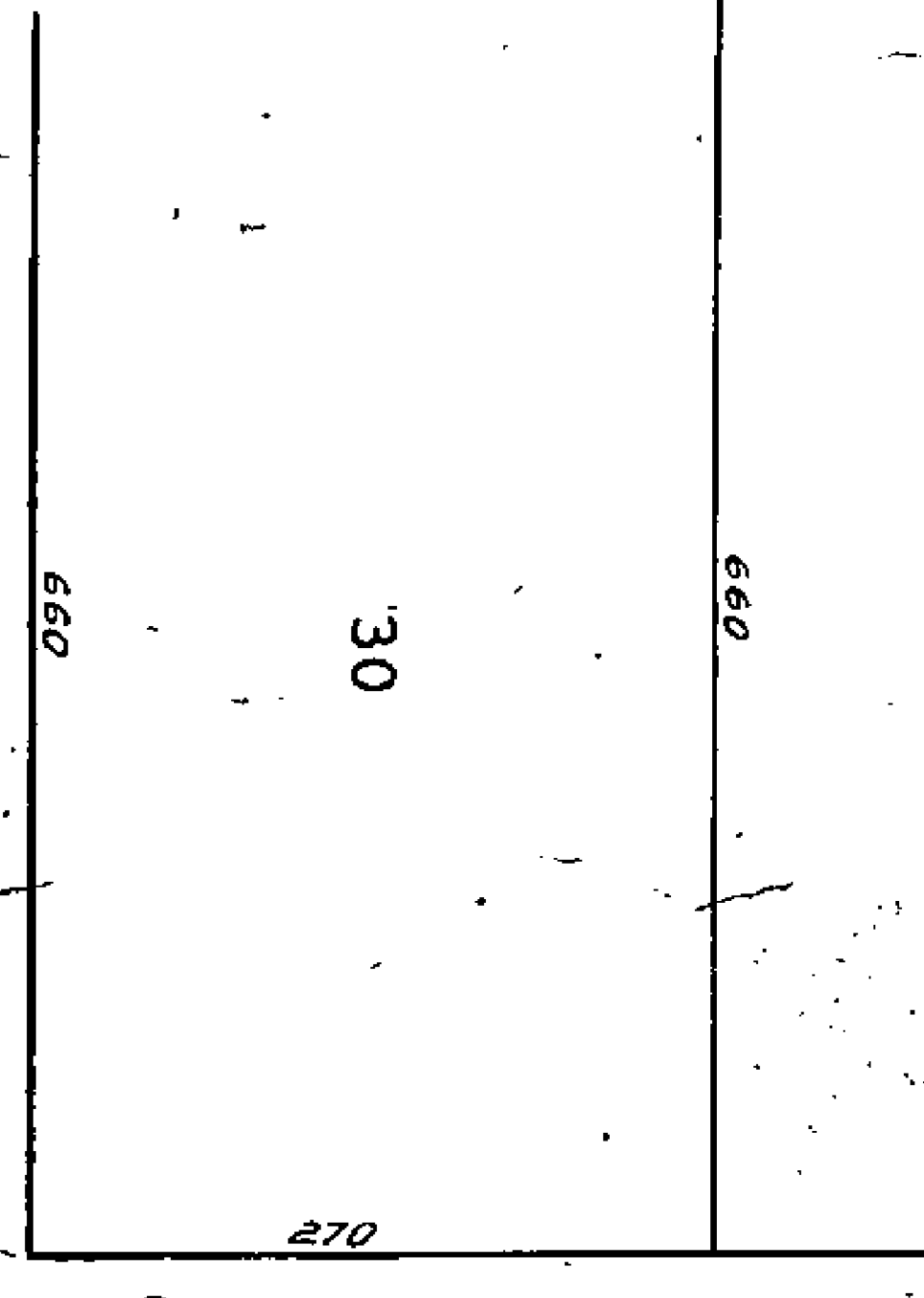
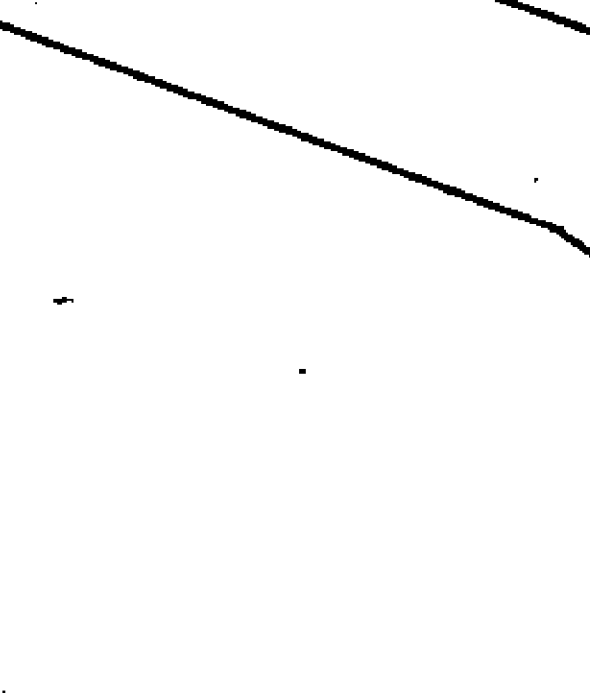
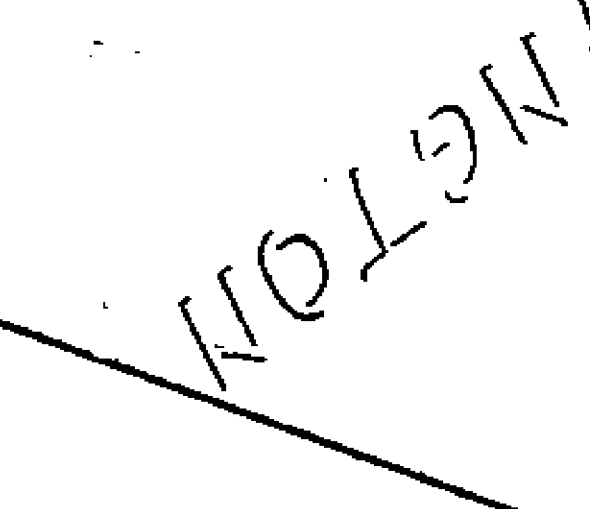
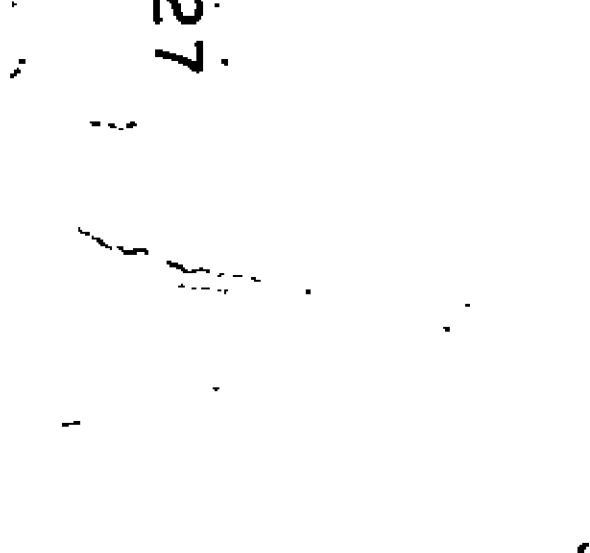
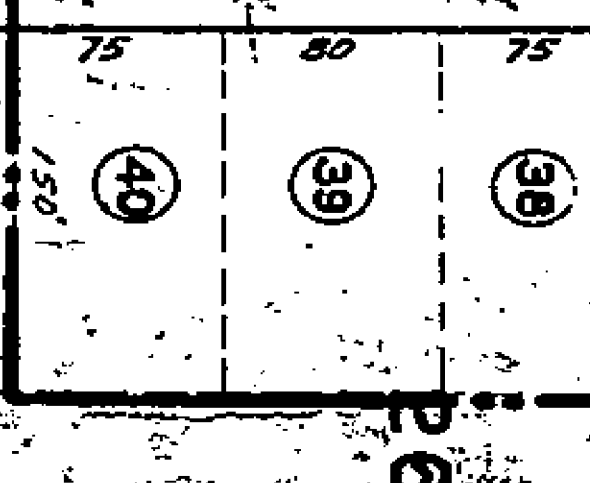
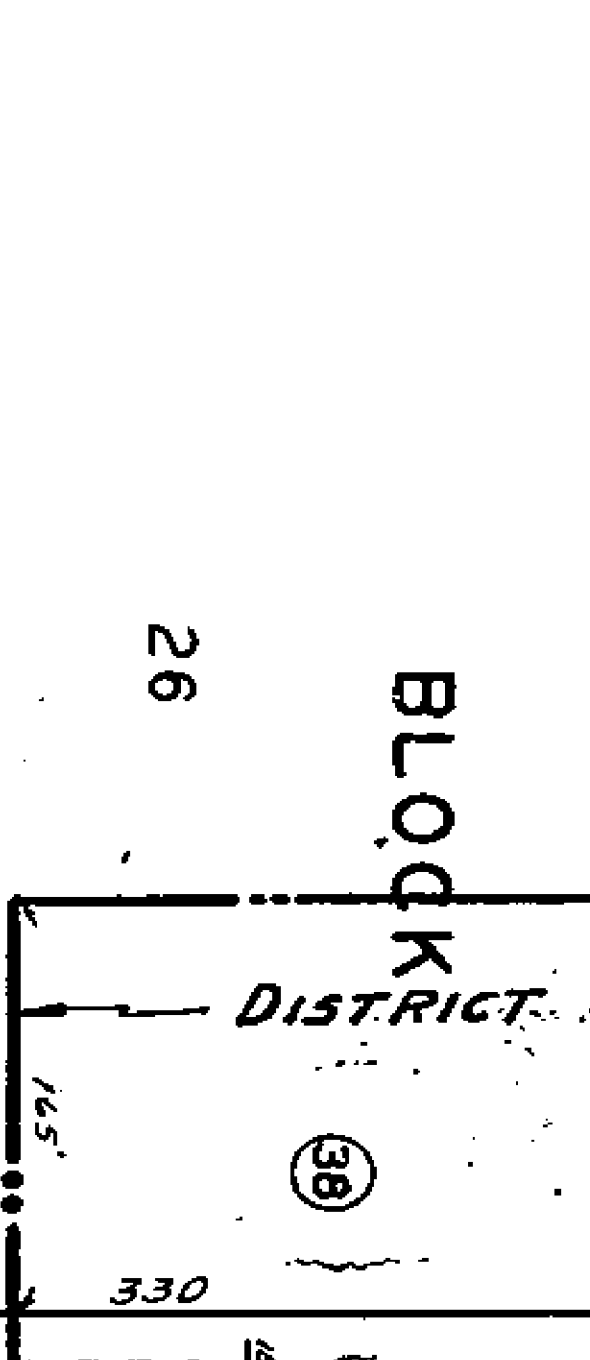
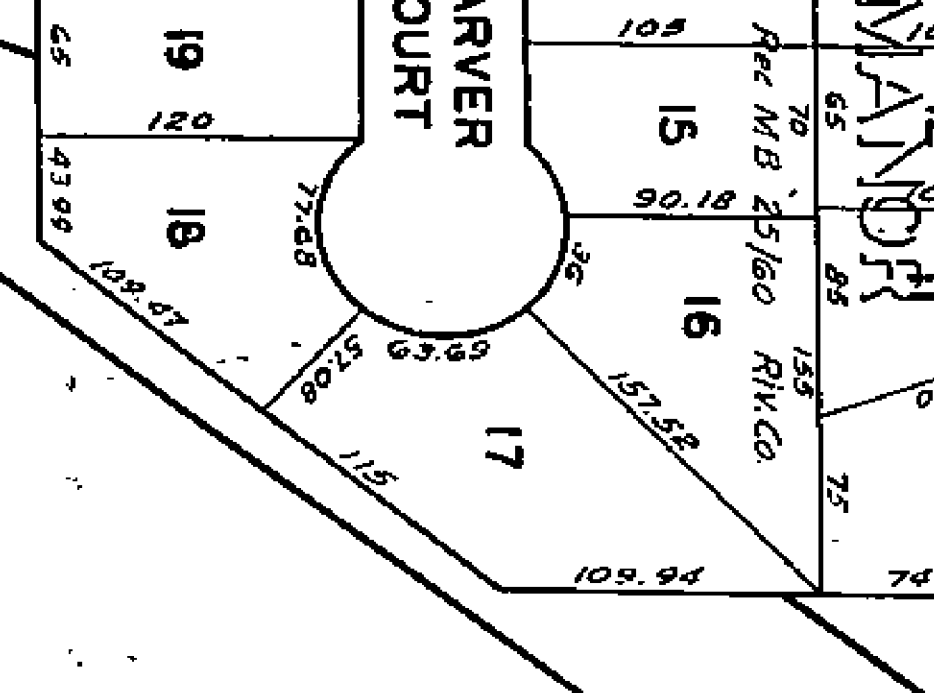
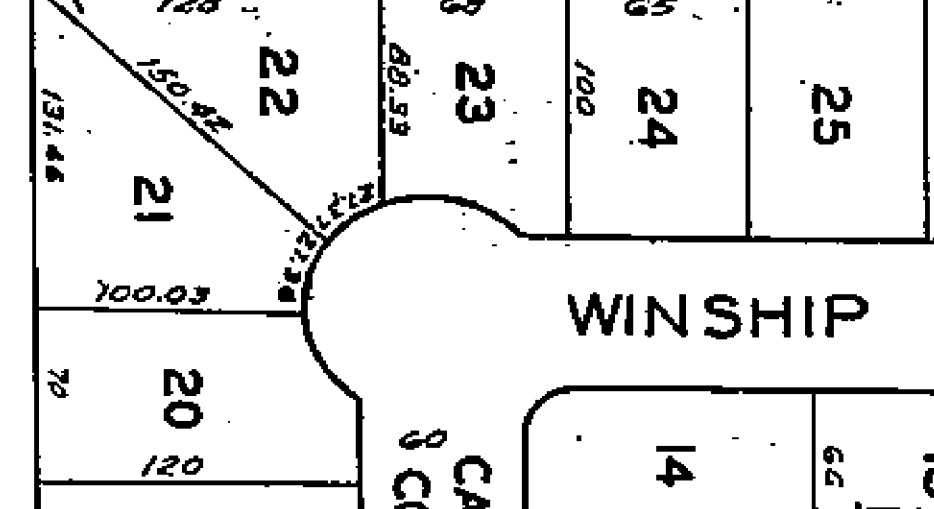
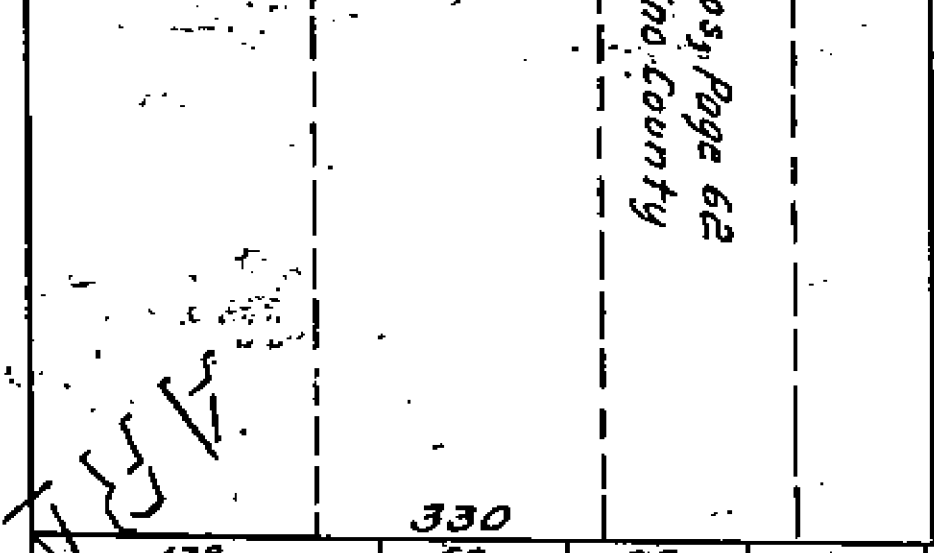
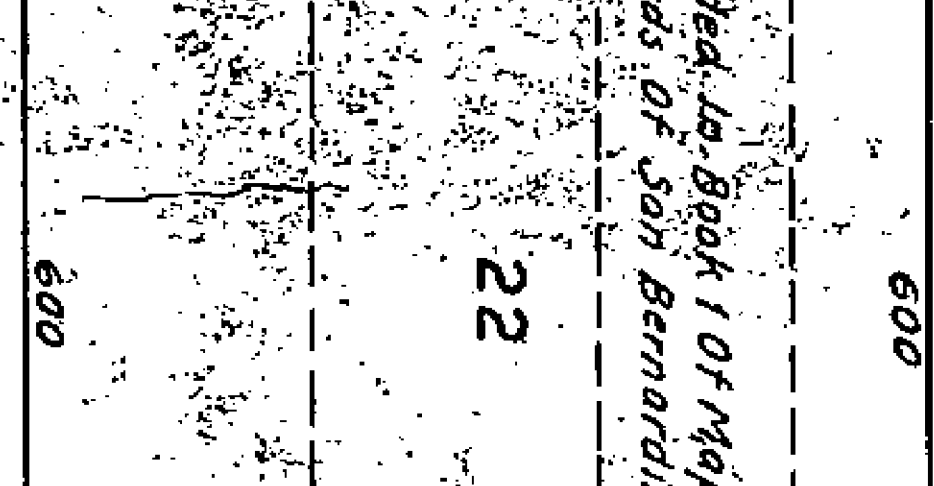
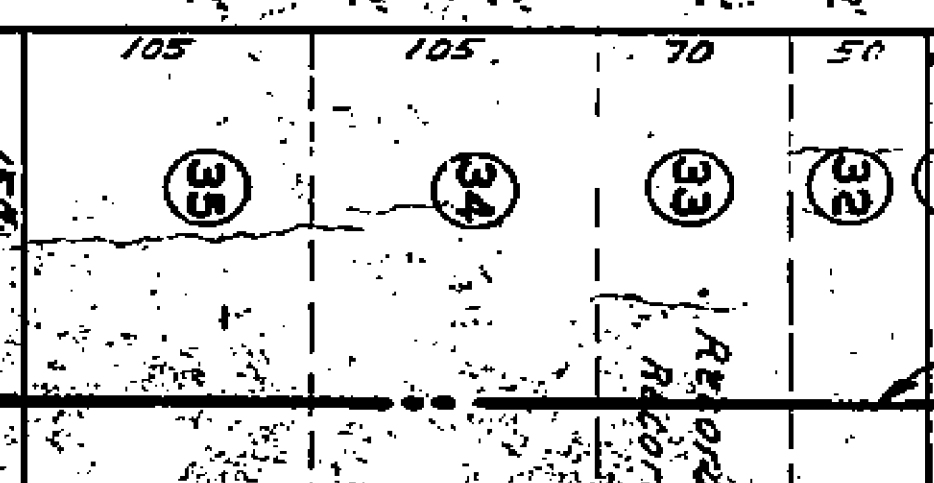
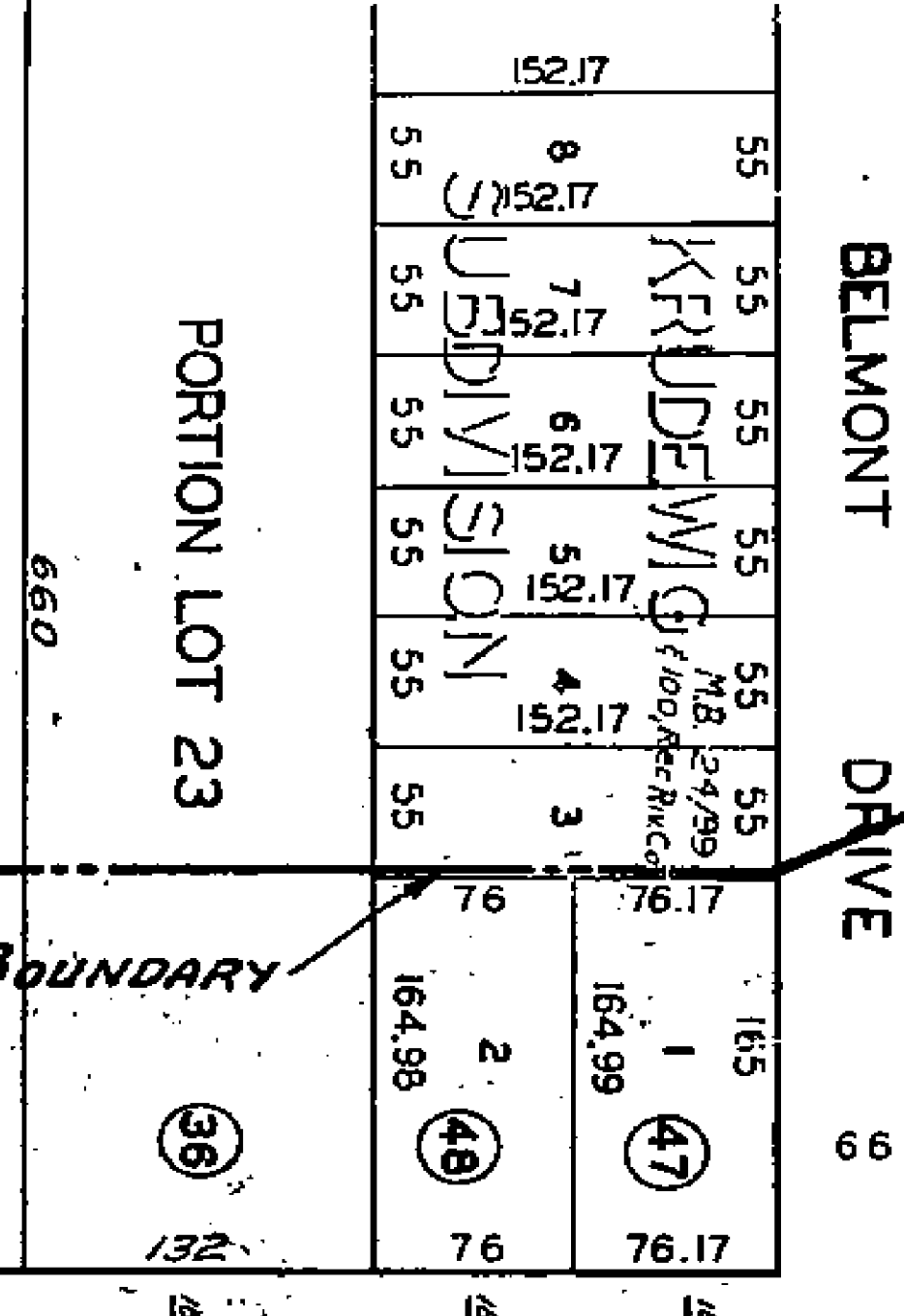
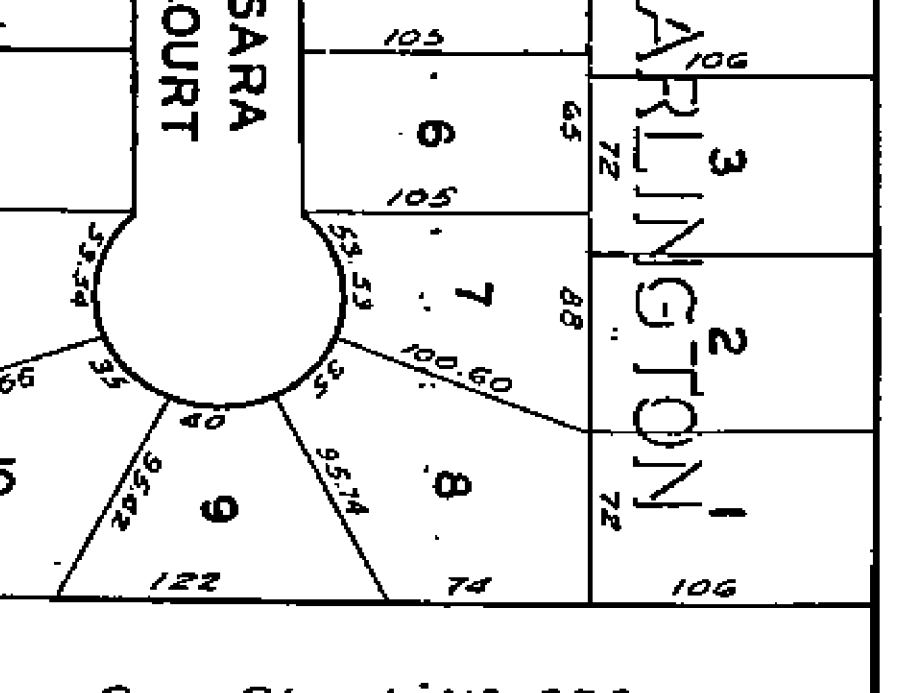
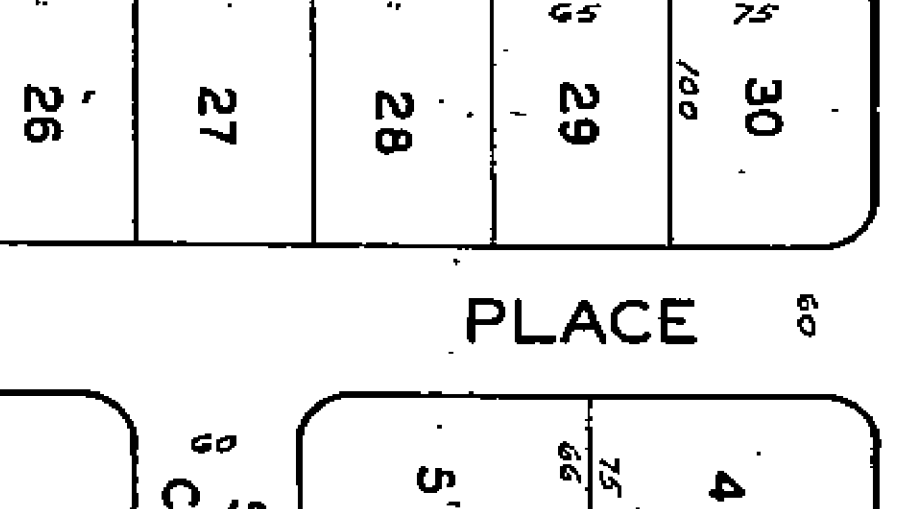
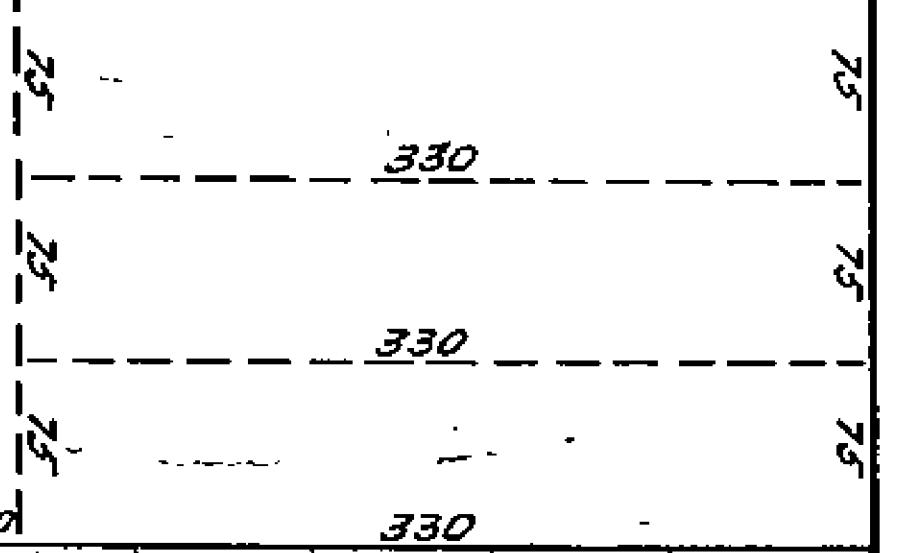
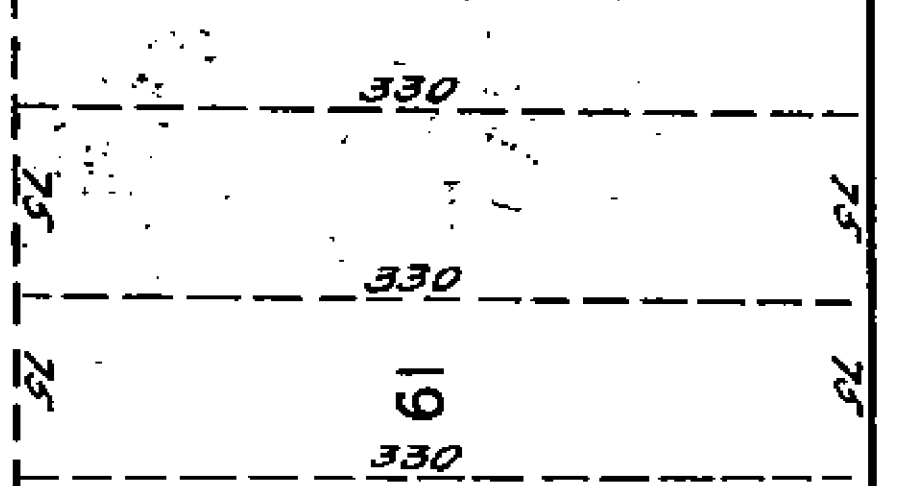
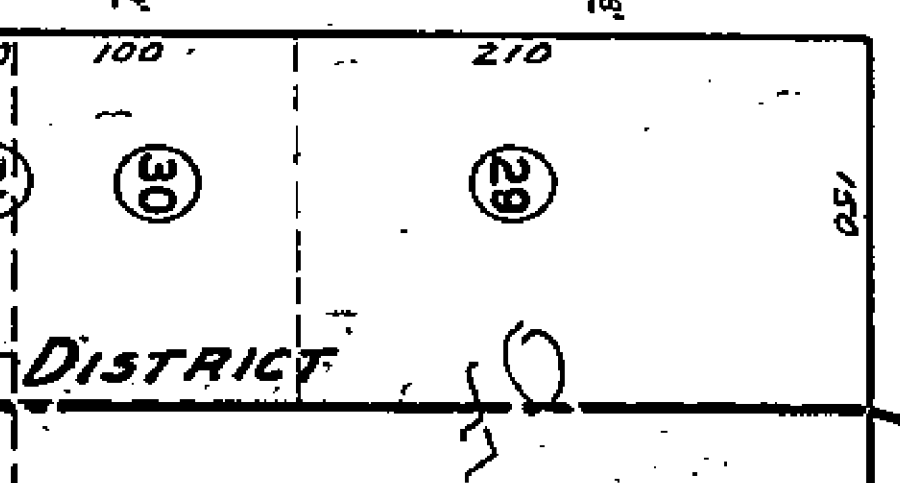
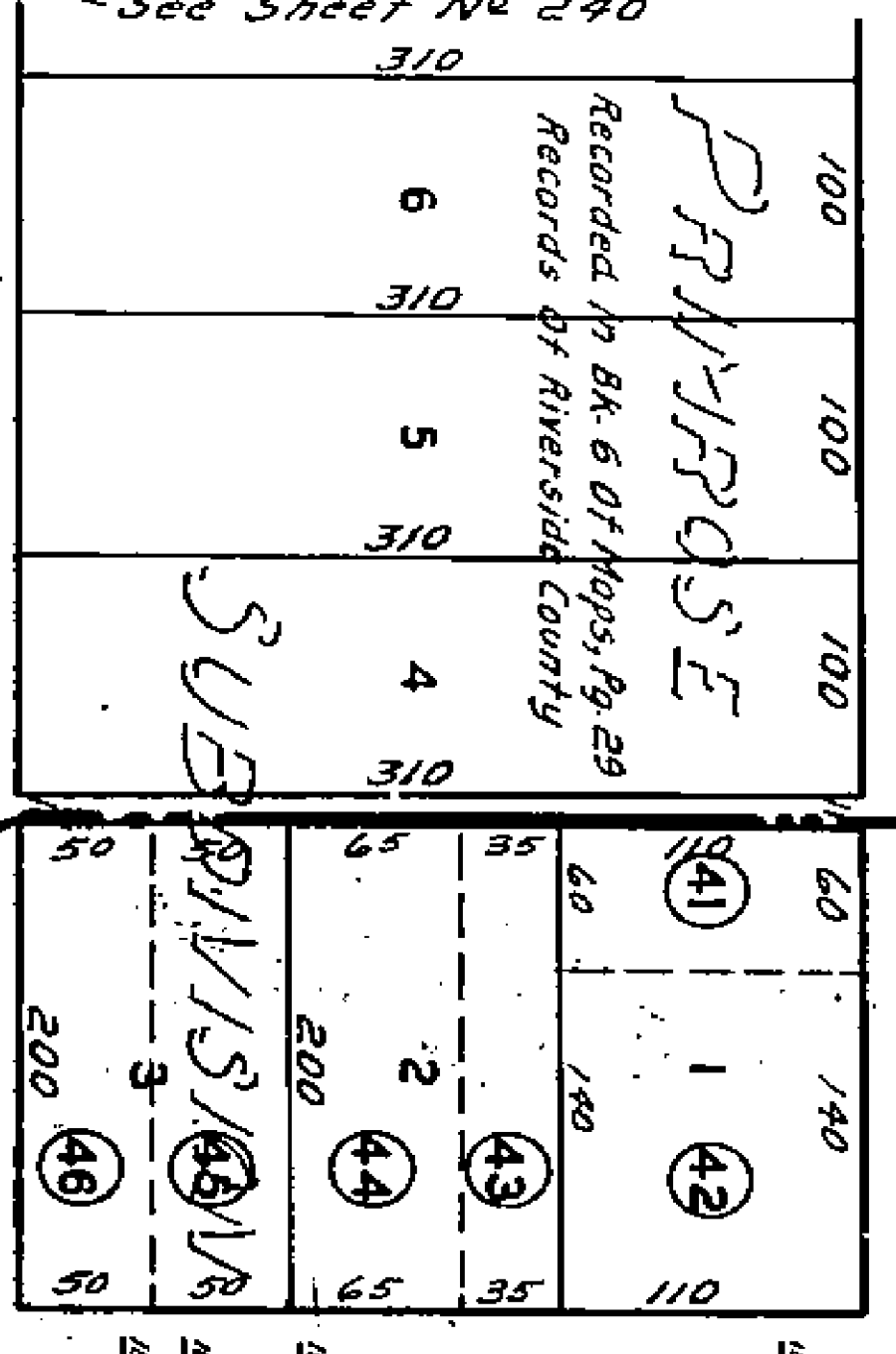
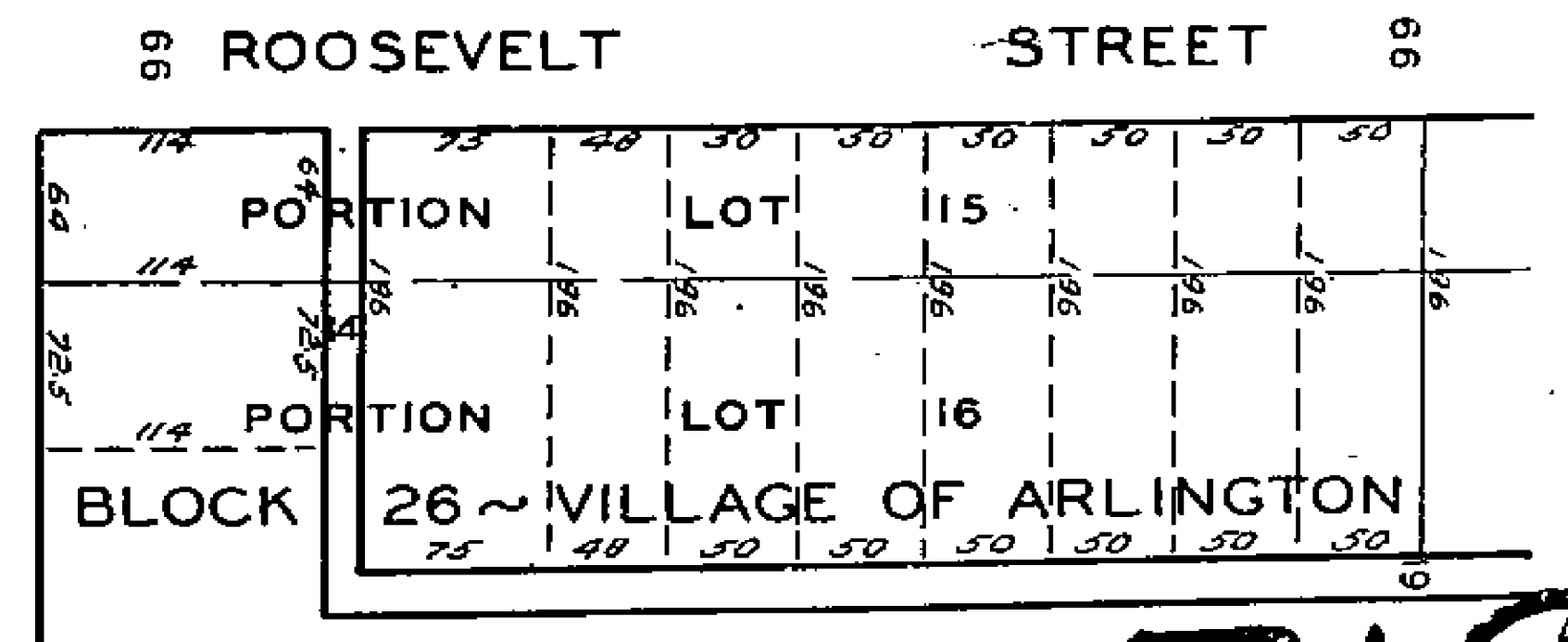
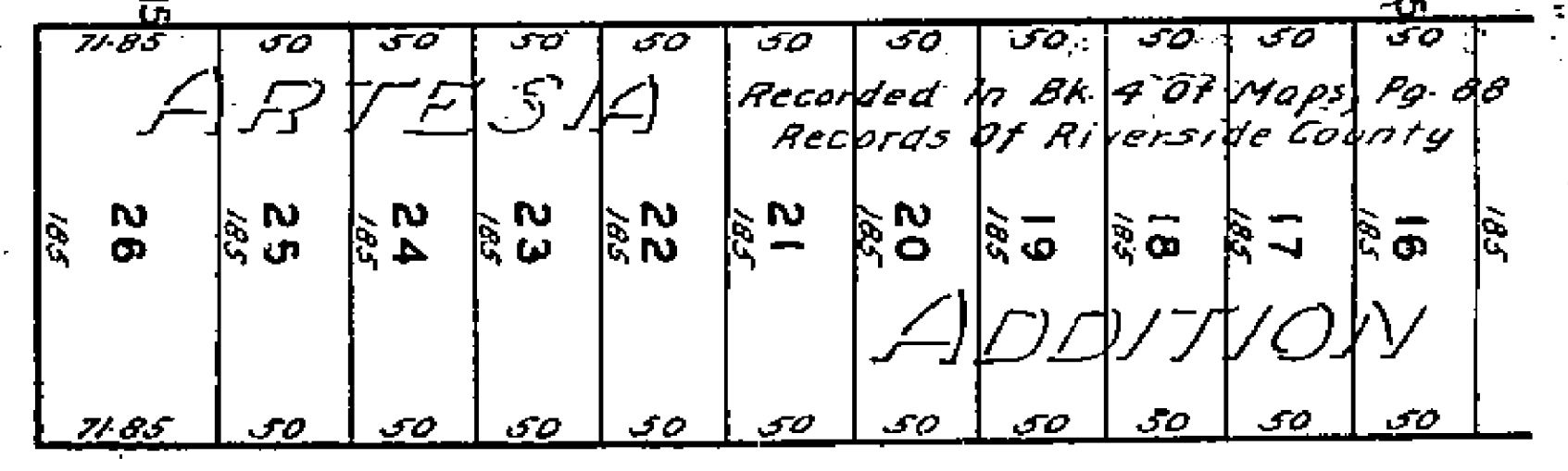
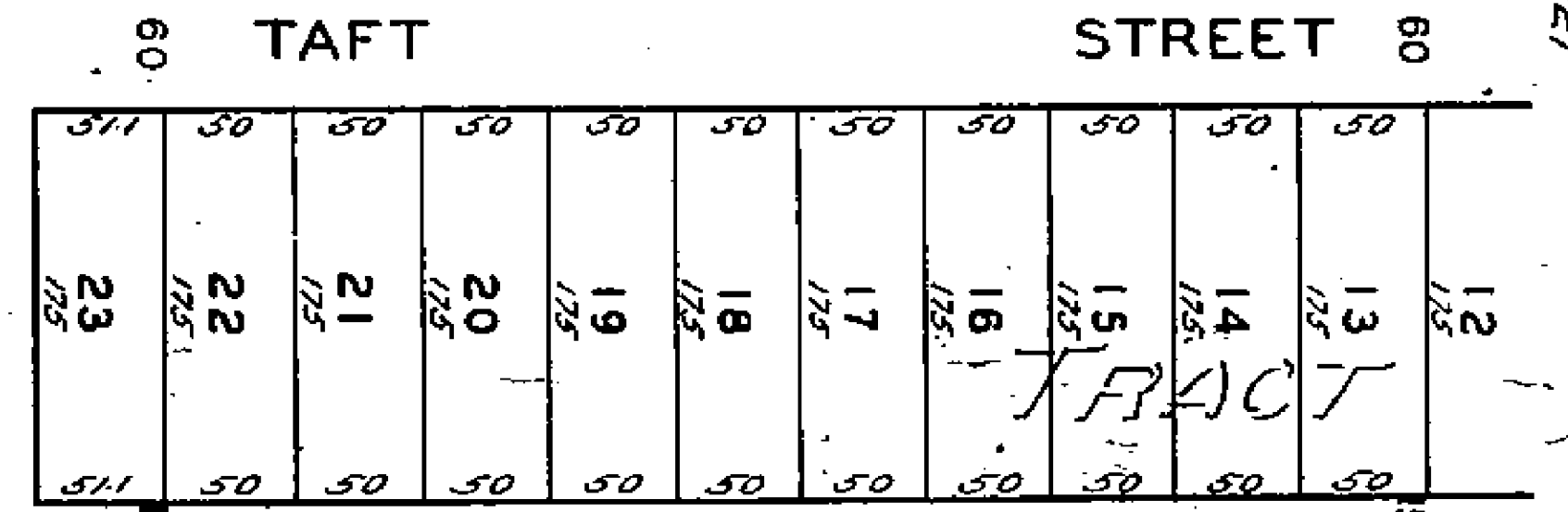
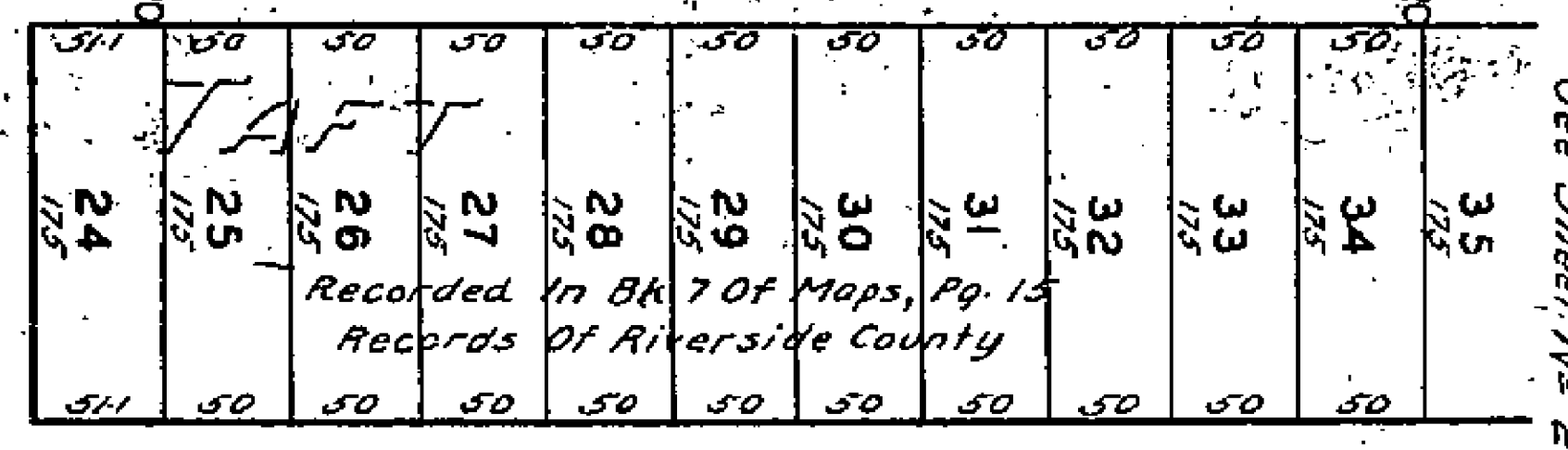
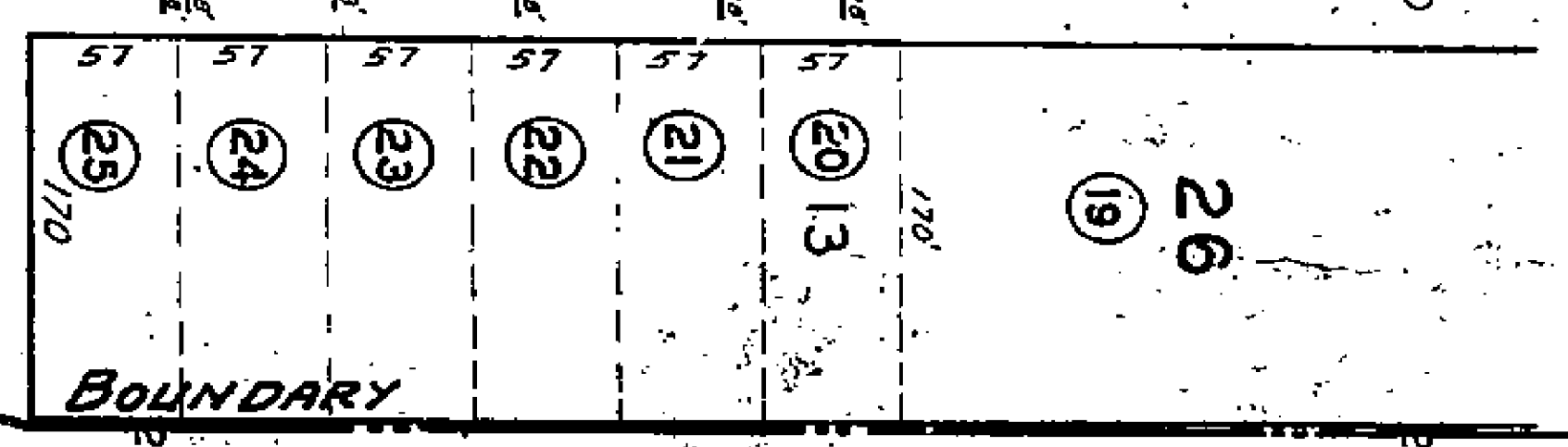
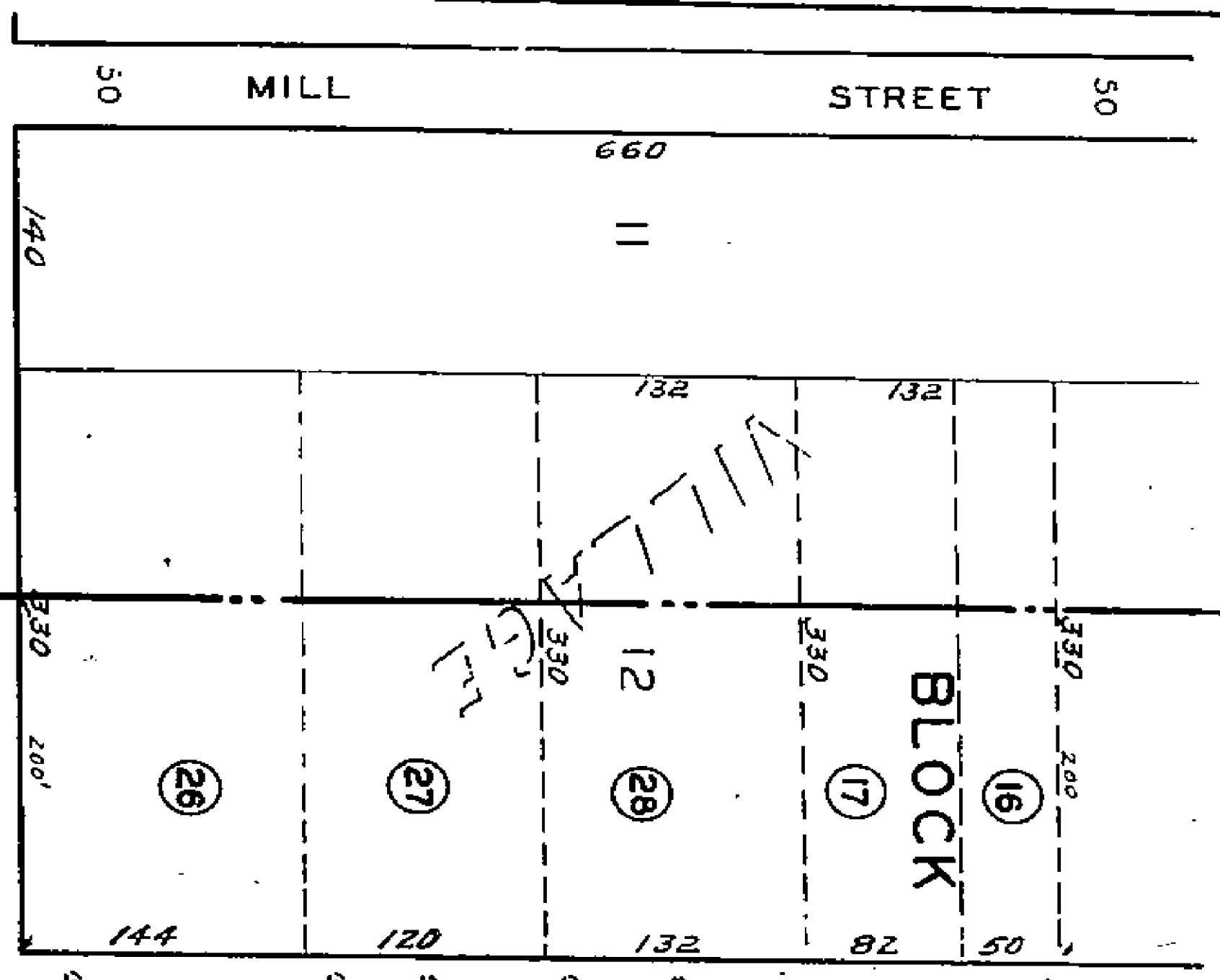


See Sheet No 220

221

1518

Scale 1" = 100'



See Sheet No 240

See Sheet No 238

See Sheet No 238

239

1518