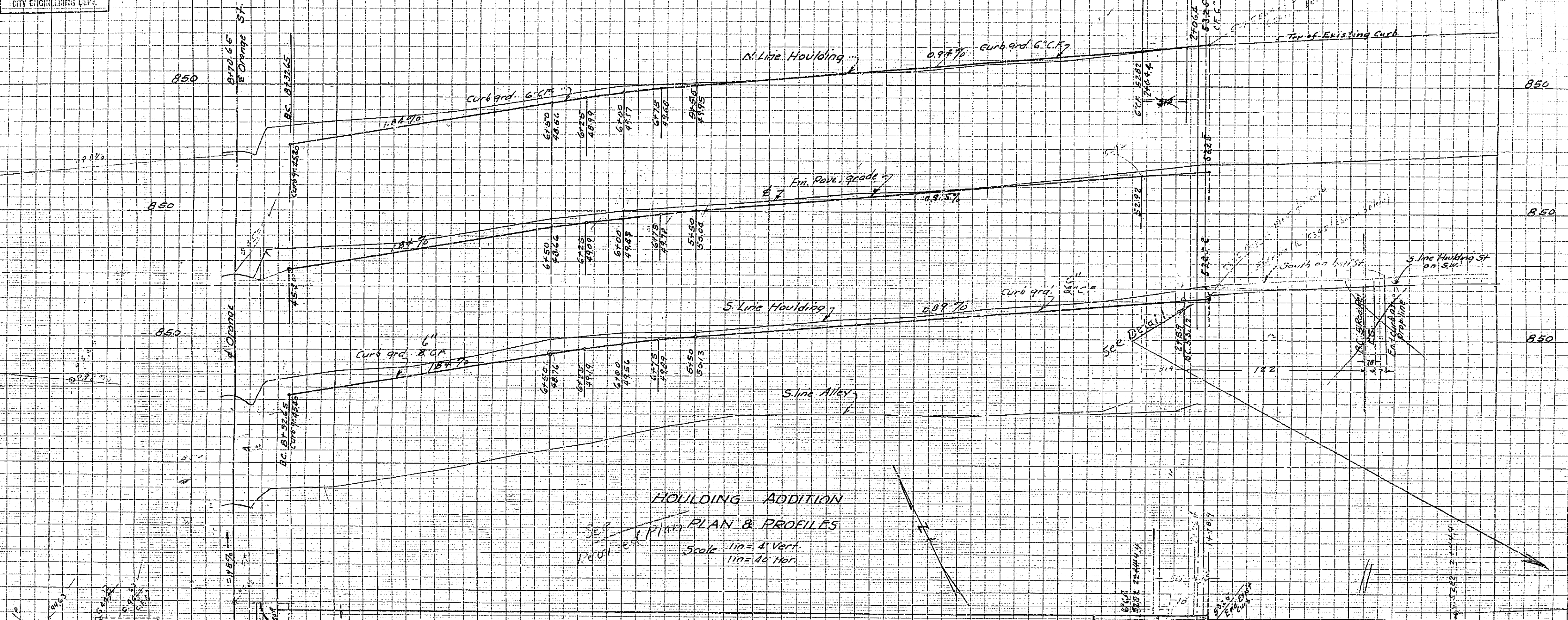
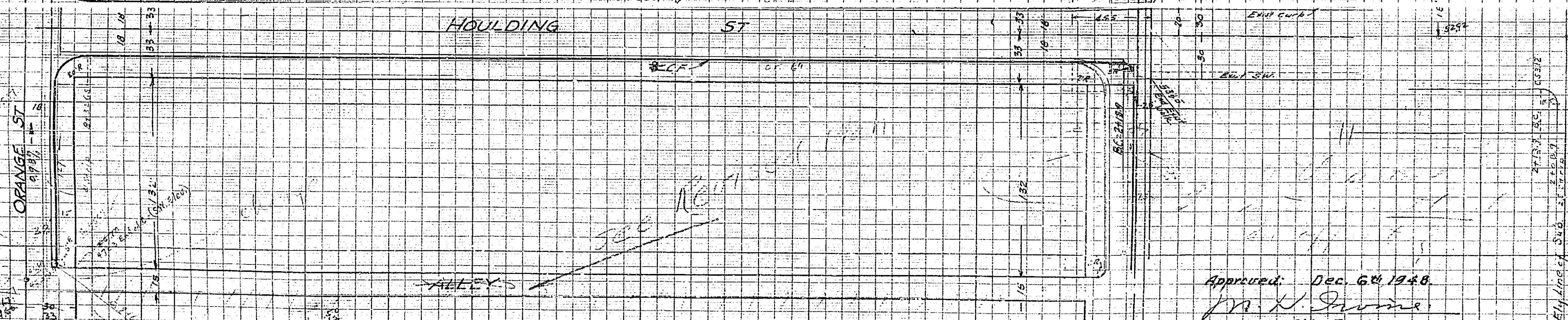


PROPERTY OF
CITY OF INVERSIDE
CITY ENGINEERING DEPT.

PROPERTY OF
CITY OF INVERSIDE
CITY ENGINEERING DEPT.



HOULDING ADDITION
 PLAN & PROFILES
 Scale 1" = 4' Vert.
 1" = 40' Hor.



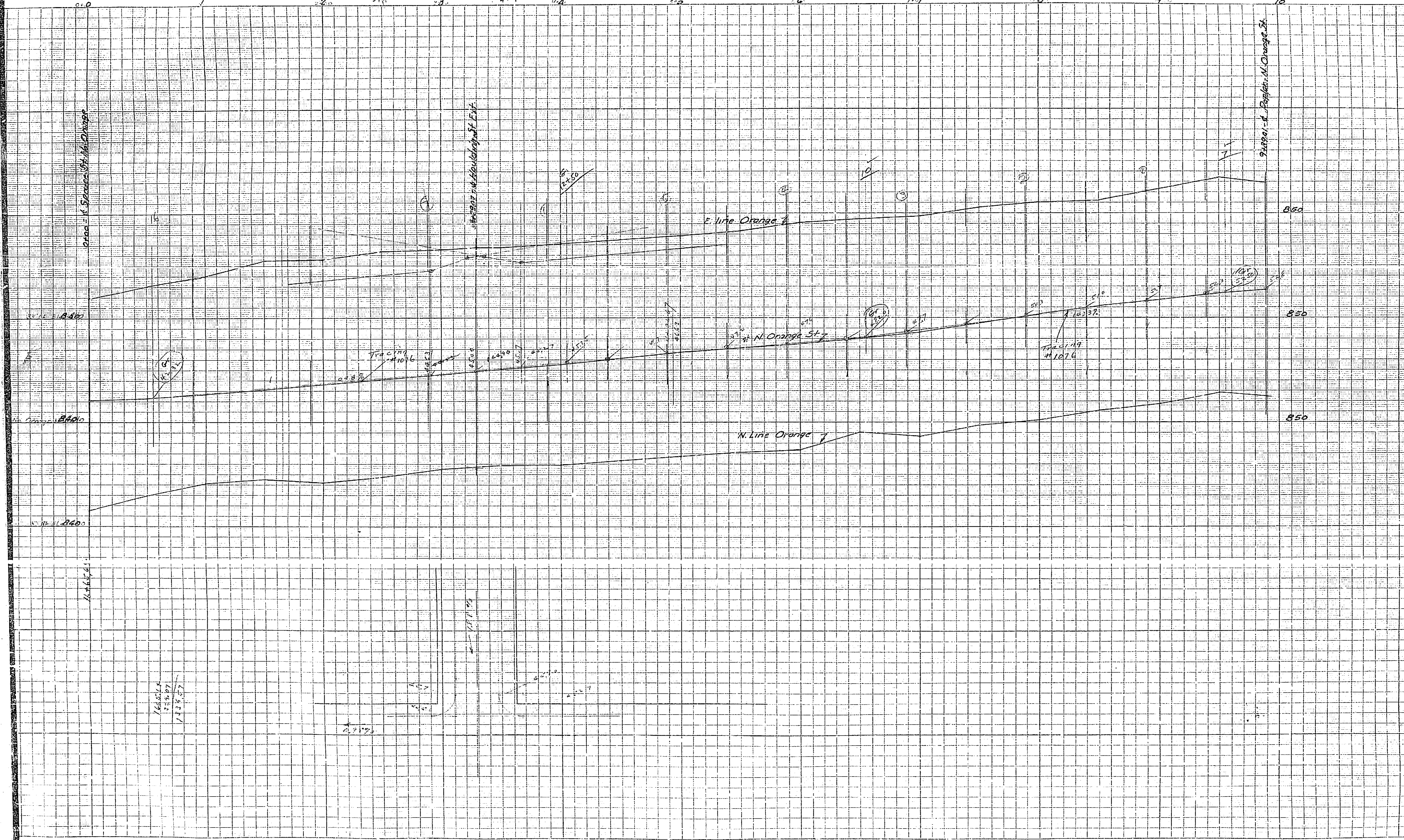
Approved: Dec. 6th 1928.
 M. H. Irvine
 City Engineer

PROPERTY OF
CITY OF INVERSIDE
CITY ENGINEERING DEPT.

152

CITY OF ORANGE
CITY ENGINEERING DEPT.

PROFILE N. ORANGE ST.
Source to Poplar
Scale - 1" = 40' Hor.
1" = 1' Vert.



152