

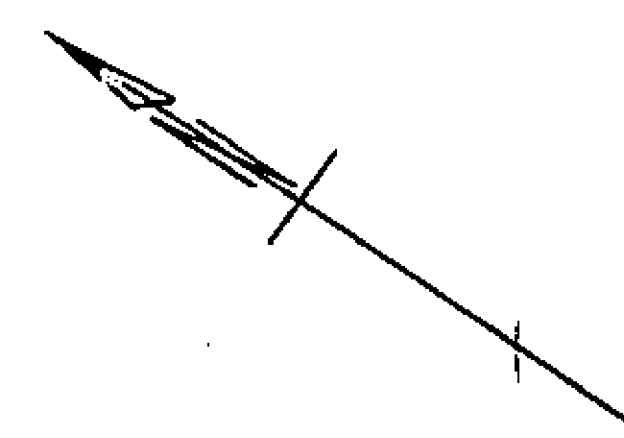
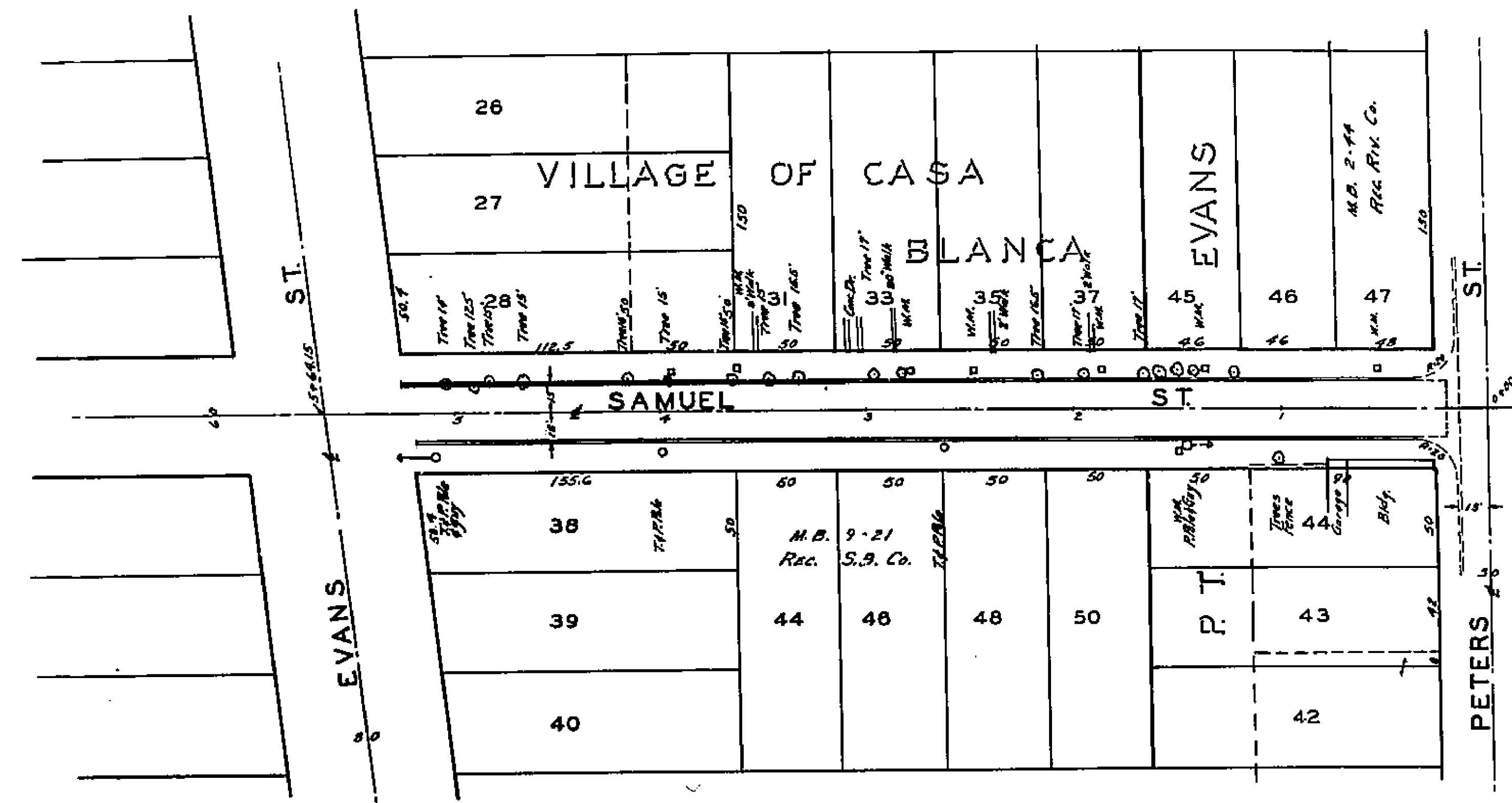
PLAN NO. 1520
 FOR THE CONSTRUCTION OF
 CURBS & GUTTERS
 IN THE
SAMUEL STREET
 IMPROVEMENT DISTRICT
 RIVERSIDE, CALIFORNIA

SCALES: HOR. 1 IN = 50 FT.

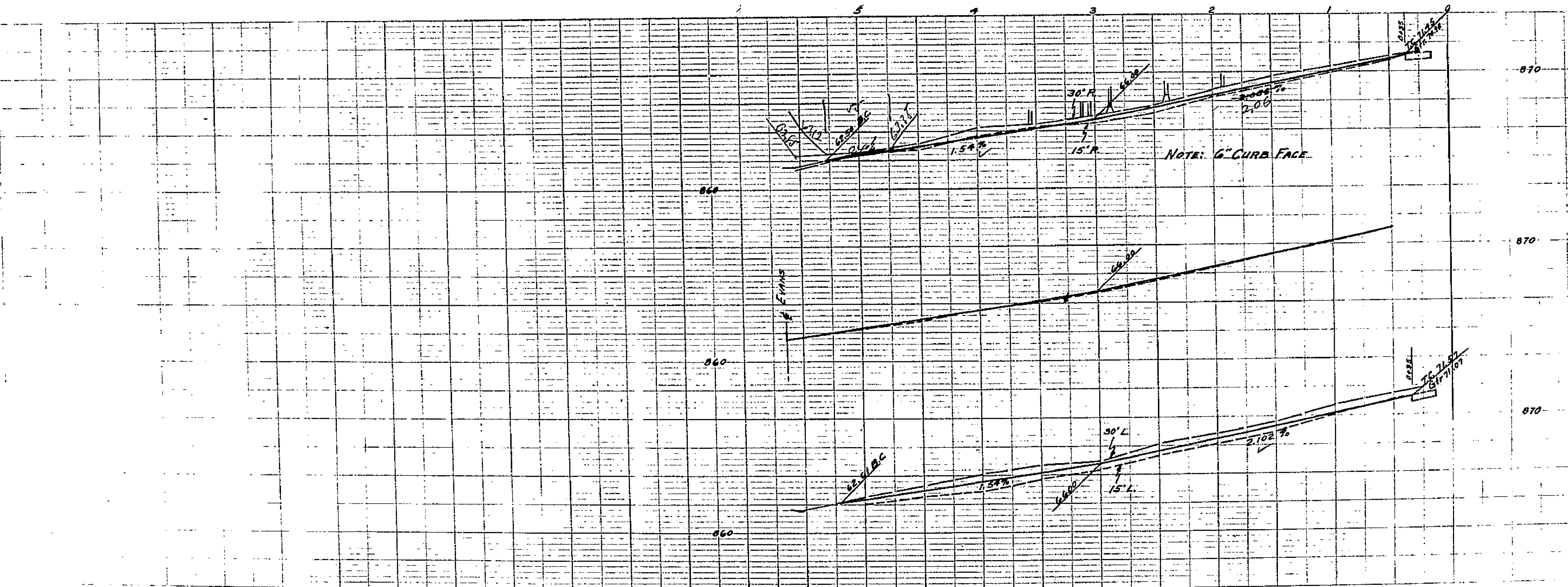
APPROVED: *M. K. Irvine*
 M. K. IRVINE-REG.

F.B. 565-23

B.M. EL. 861.59 S.E. COR.
 MADISON & EVANS S'S. OF
 & EVANS W.



9
10
11
12



1520

ASSESSMENT NO. 405

DIAGRAM

EXHIBITING SAMUEL STREET IMPROVEMENT DISTRICT

IN THE CITY OF RIVERSIDE ON WHICH WORK HAS BEEN DONE UNDER THE OFFICIAL CONTRACT OF THE SUPERINTENDENT OF STREETS OF SAID CITY WITH CARL L. FREJD DATED AUGUST 16 1955 FOR THE CONSTRUCTION OF COMBINATION CURB AND GUTTER

AS IS MORE PARTICULARLY DESCRIBED IN SAID CONTRACT TO WHICH REFERENCE IS HEREBY MADE FOR FURTHER PARTICULARS; SAID DIAGRAM ALSO SHOWS THE RELATIVE LOCATION OF EACH LOT, PORTION OF LOT, PIECE OR PARCEL OF LAND, ASSESSED FOR THE WORK DONE, NUMBERED IN CIRCLES TO CORRESPOND TO THE RED INK NUMBERS IN THE ASSESSMENT HEREIN FIGURES NEXT TO PROPERTY LINES SHOW LENGTH OF SAID LINES IN FEET. THE MARK (') MEANS FEET. PROPERTY LINES THAT DIFFER FROM THE RECORDED SUBDIVISIONS ARE SHOWN BY BROKEN LINES. THE DISTRICT BENEFITED IS BOUNDED BY A HEAVY DASHED LINE. PROPERTY COVERED BY THIS ASSESSMENT IS SHOWN ON THE FOLLOWING RECORDED MAPS:

VILLAGE OF CASA BLANCA M.B. 9-21 REC. S.B. CO.
P.T. EVANS ADDITION " 2-44 " RIV "

HEREIN THE LEGEND OF THE DIFFERENT KINDS OF WORK PERFORMED IS SHOWN AS FOLLOWS:

COMBINATION CURB AND GUTTER



CITY ENGINEER OF THE CITY OF RIVERSIDE THE FOLLOWING IS A STATEMENT OF AMOUNTS OF DIFFERENT KINDS OF WORK DONE BY CARL L. FREJD UNDER CONTRACT DATED AUGUST 16 1955 PURSUANT TO RESOLUTION OF INTENTION NO. 6663 ADOPTED BY THE CITY COUNCIL OF THE CITY OF RIVERSIDE ON THE 21ST DAY OF JUNE 1955

980.35 LIN. FT. COMB. CURB AND GUTTER

AT SAID CITY OF RIVERSIDE THIS 3RD DAY OF OCTOBER 1955

CITY ENGINEER
OF THE CITY OF RIVERSIDE

CITY ENGINEER
OF THE CITY OF RIVERSIDE

I HEREBY CERTIFY THAT THE ABOVE WORK WAS DONE IN ACCORDANCE WITH LINES AND GRADES FURNISHED BY ME AND THAT THE DIAGRAM OF THE ASSESSMENT DISTRICT FOR THE SAME IS CORRECT.

RECORDED AT 11:00 O'CLOCK A.M.
THIS 28TH DAY OF NOVEMBER 1955

SUPERINTENDENT OF STREETS
OF THE CITY OF RIVERSIDE

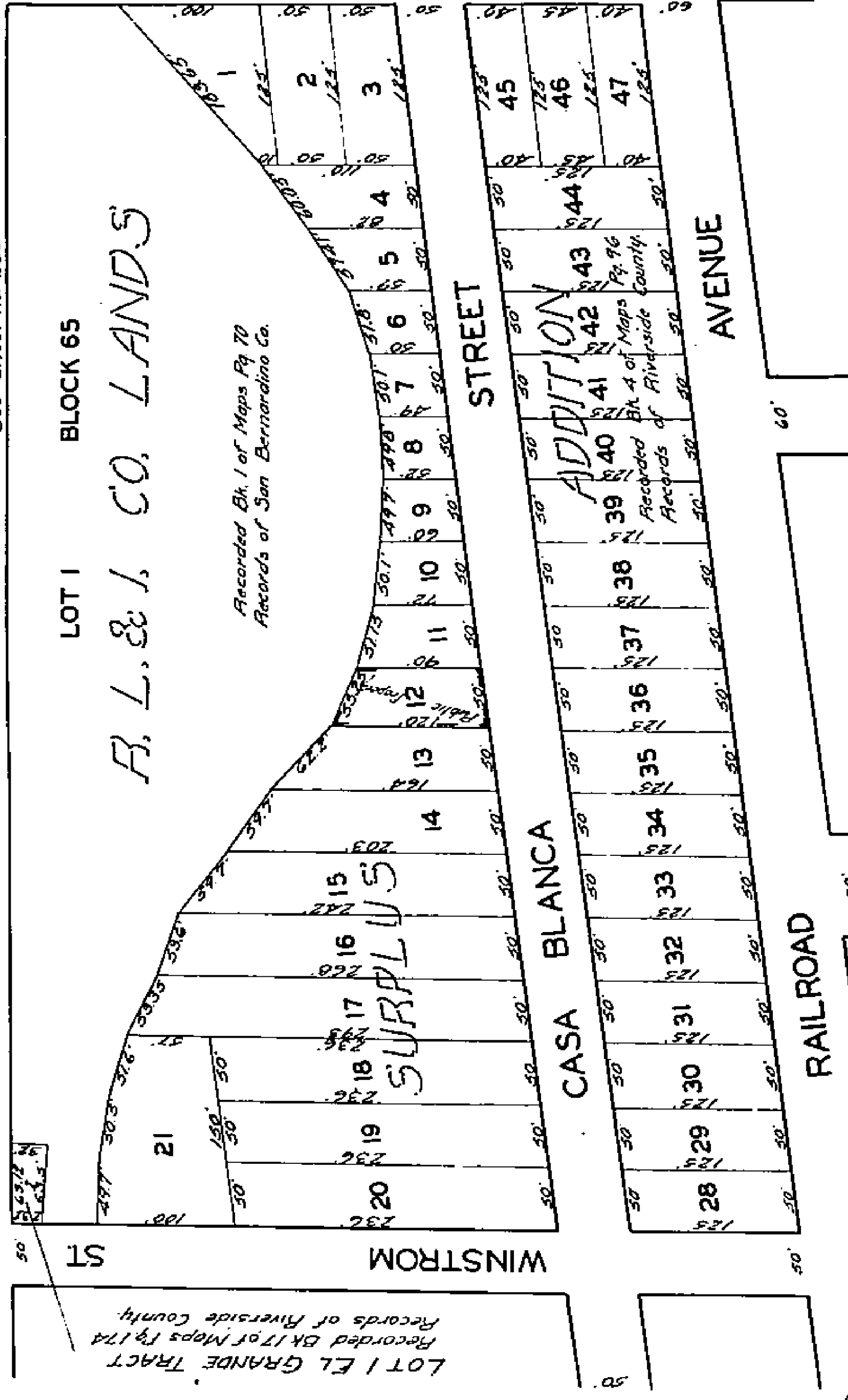
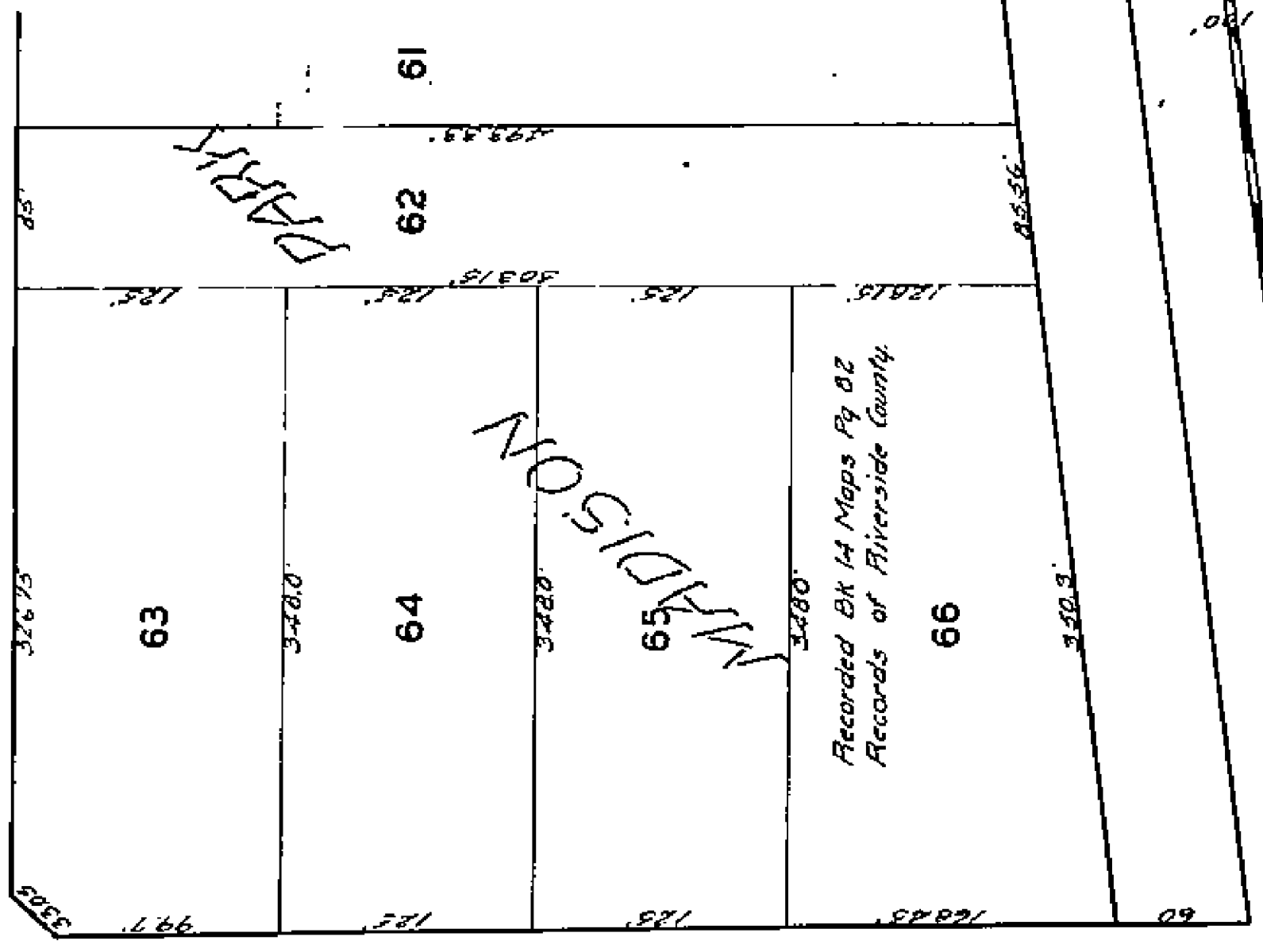
1520

Scale 1" = 100'

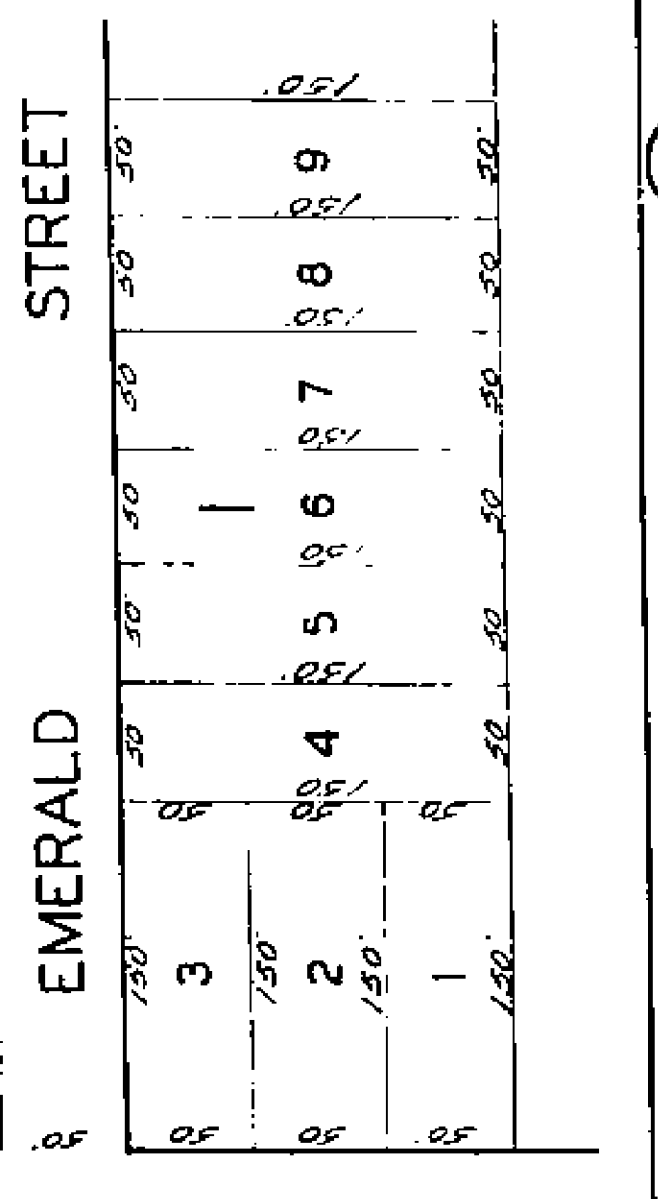
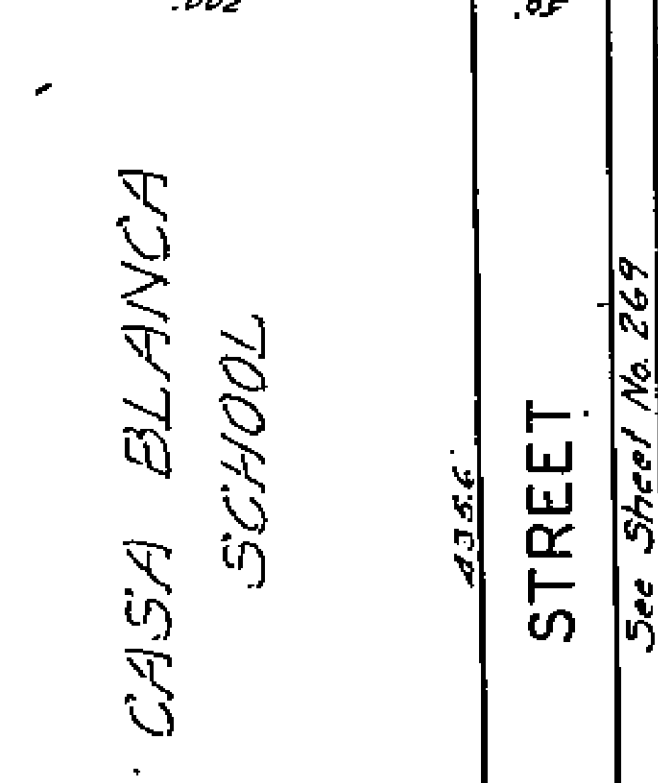
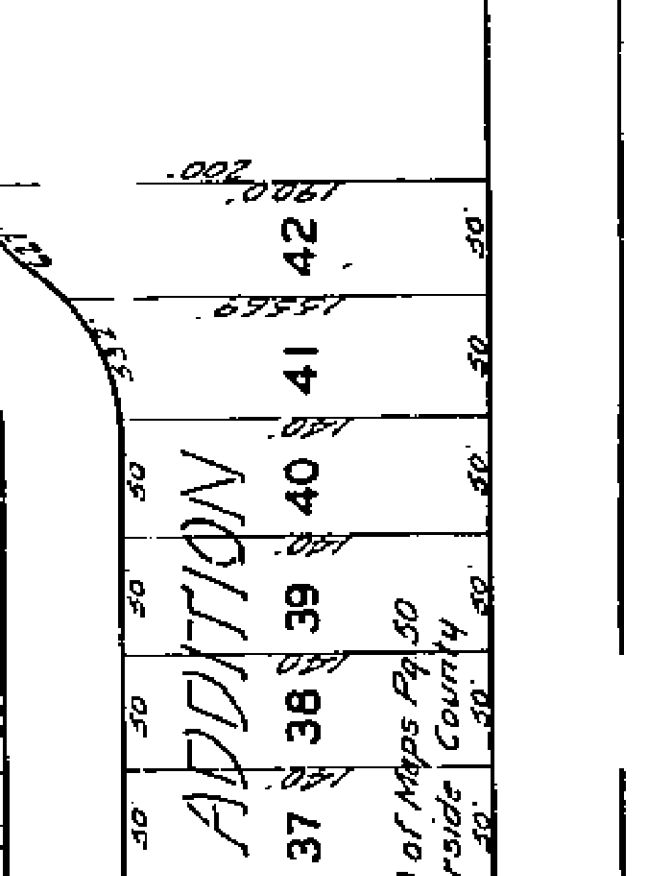
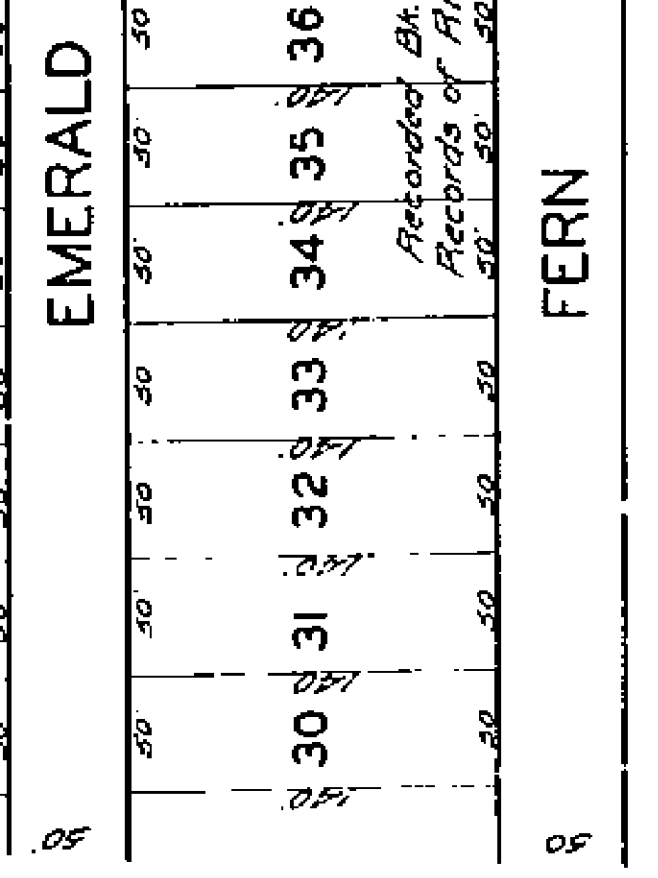
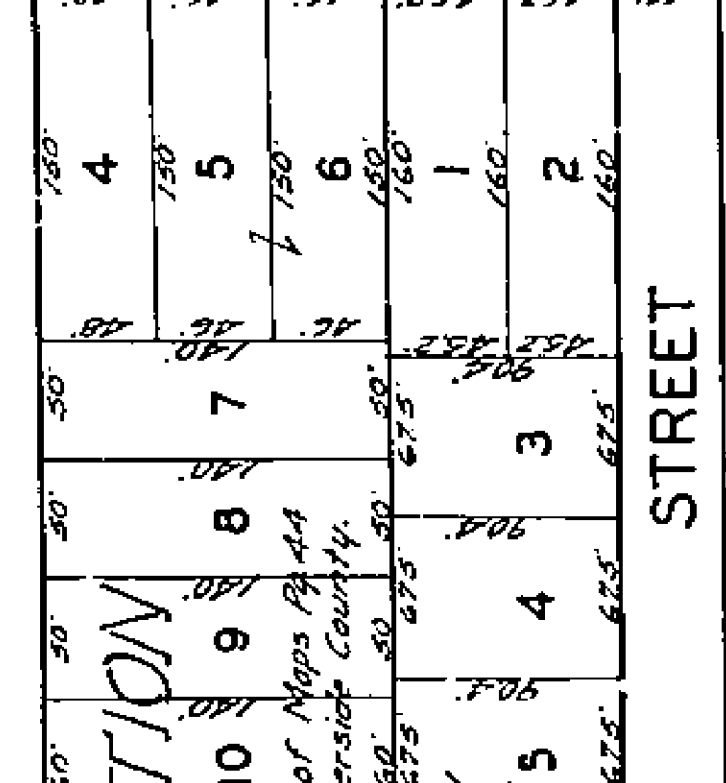
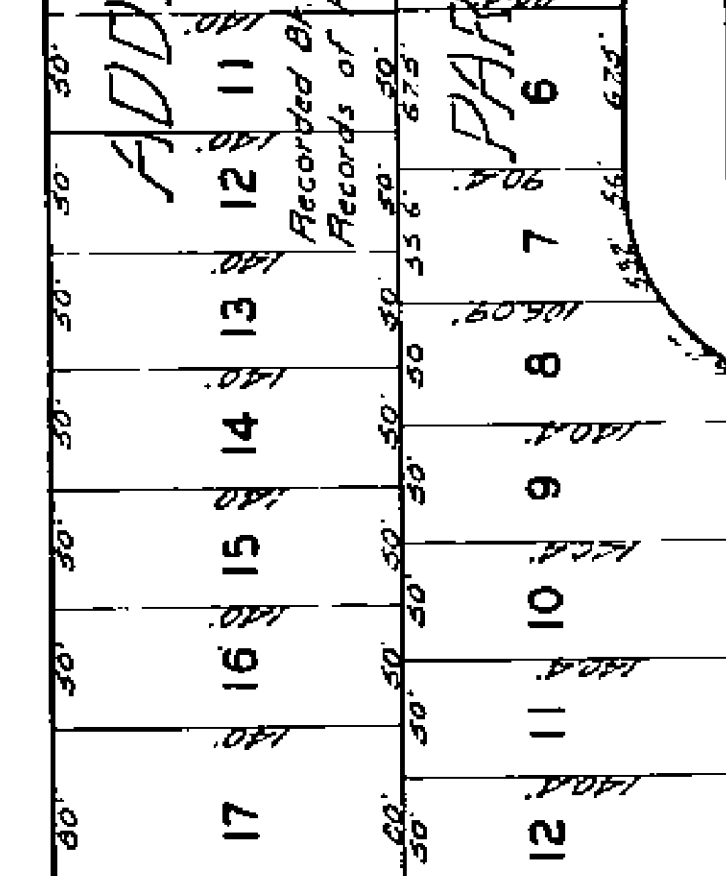
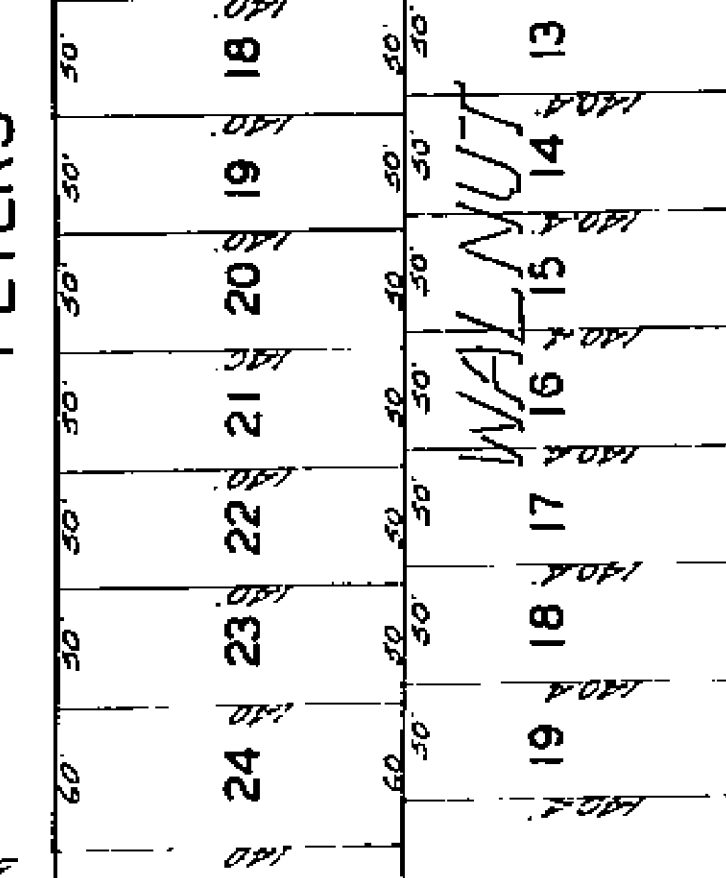
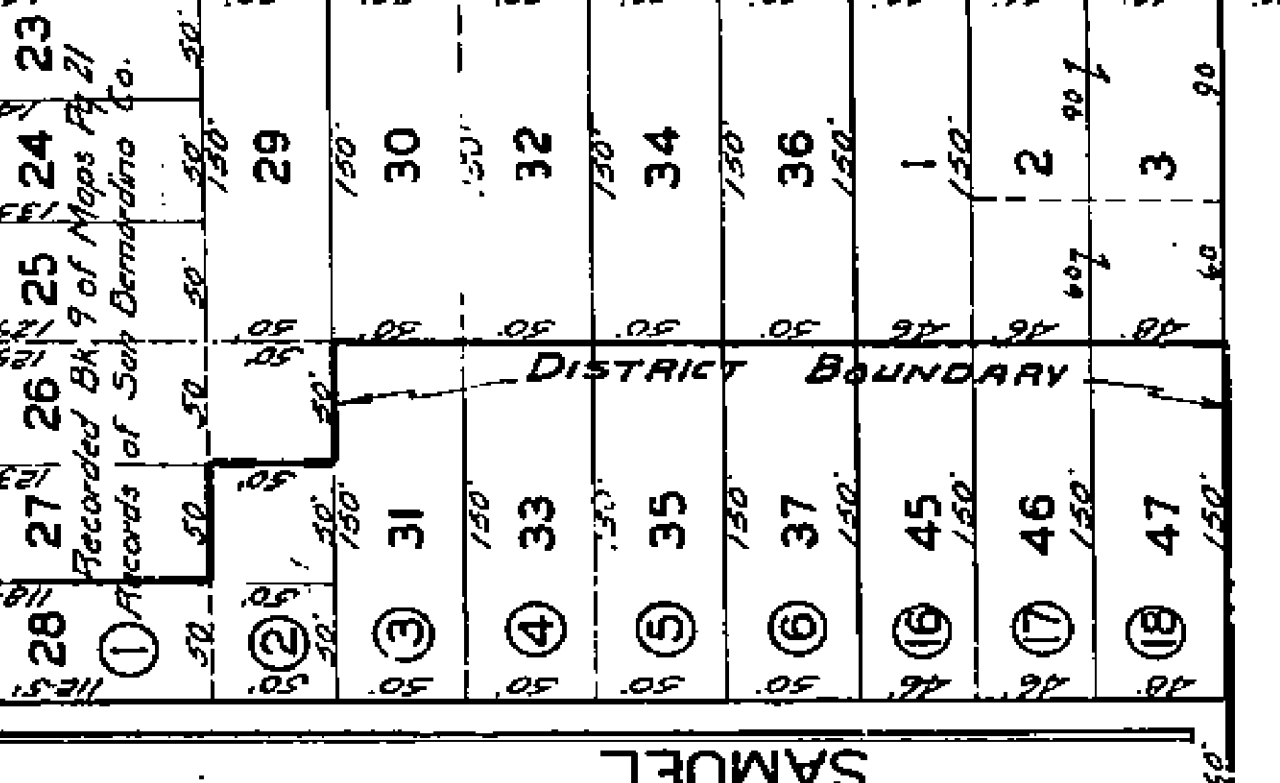
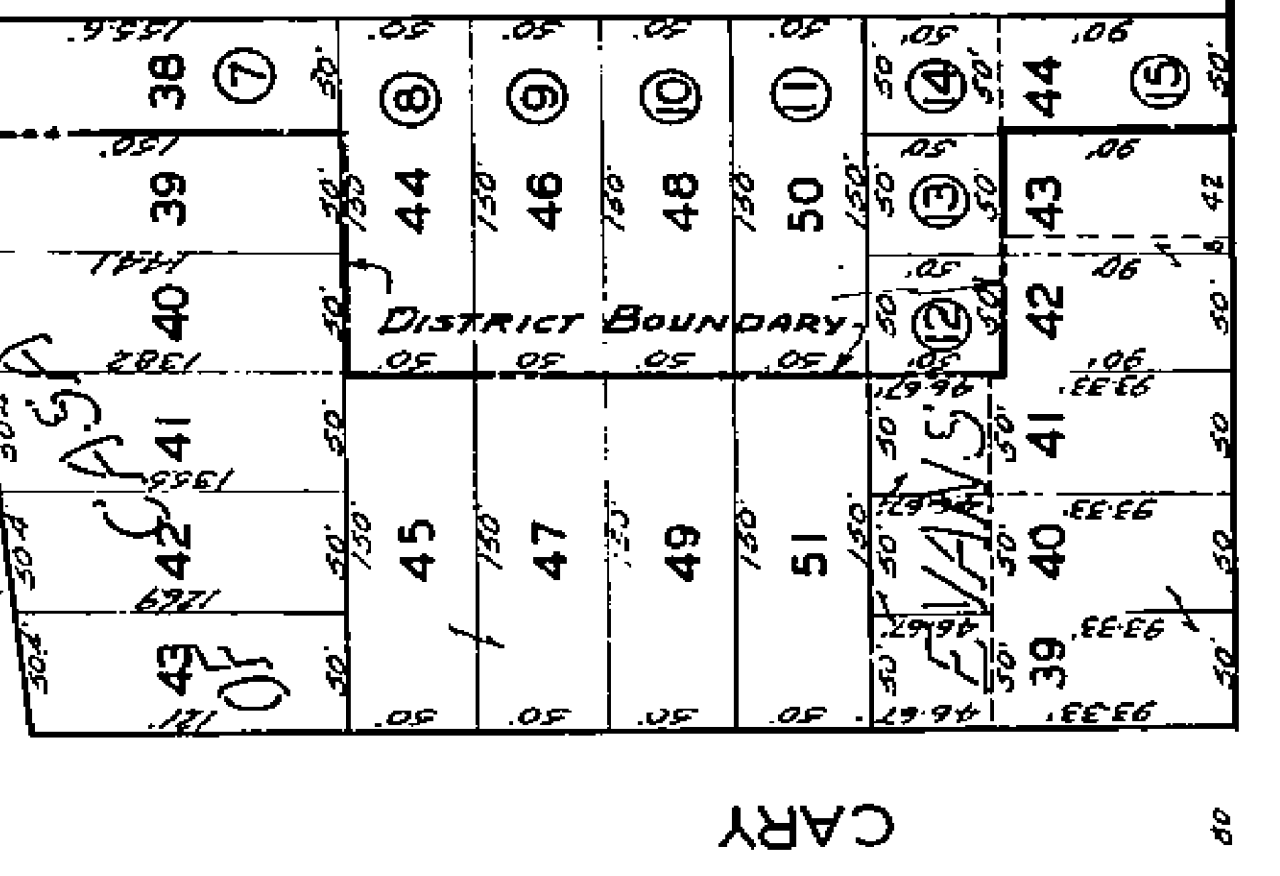
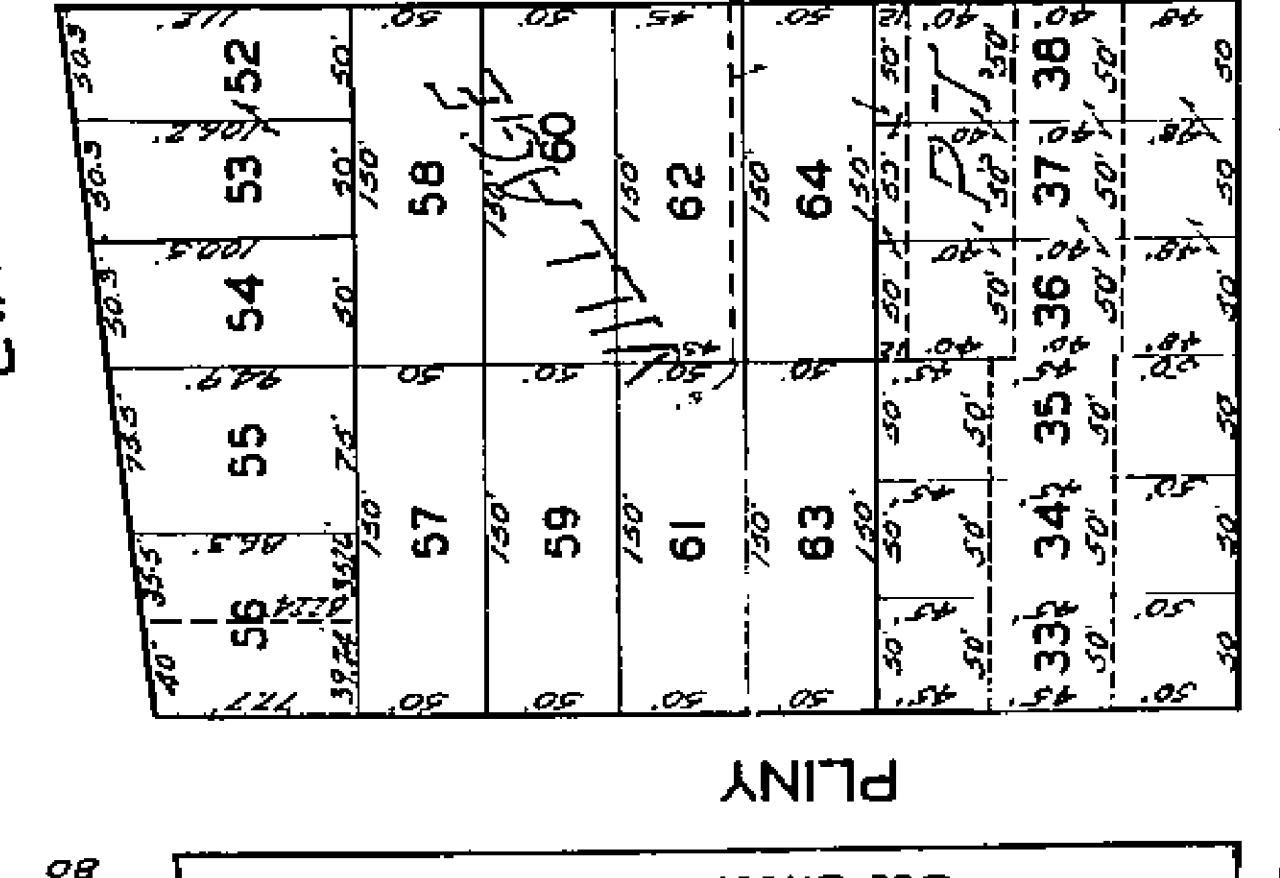
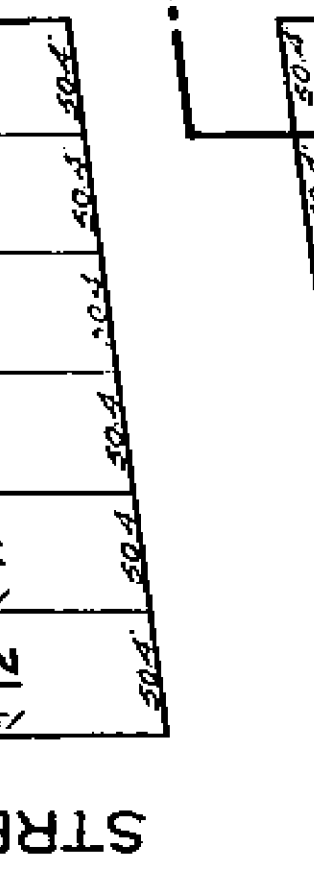
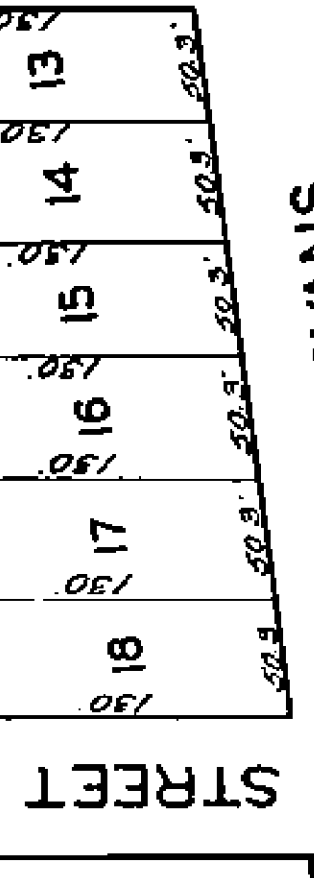
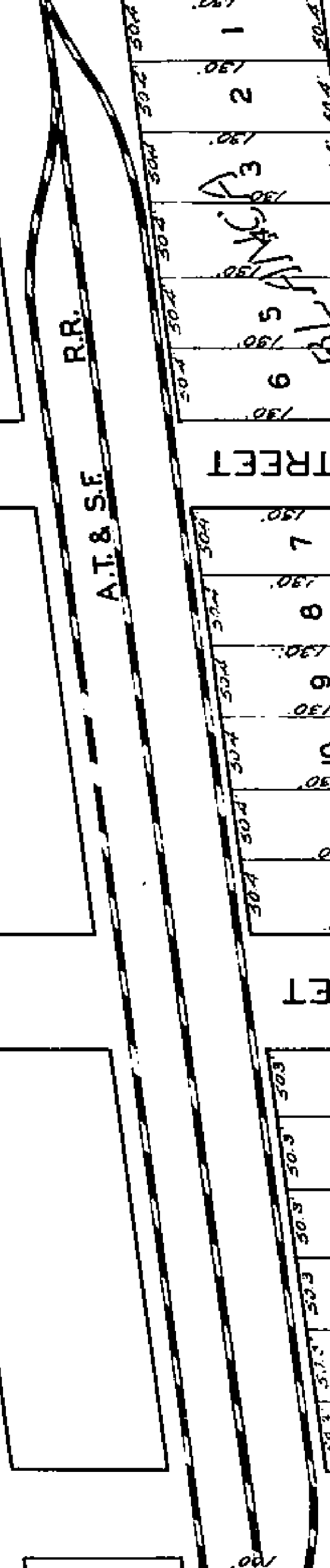
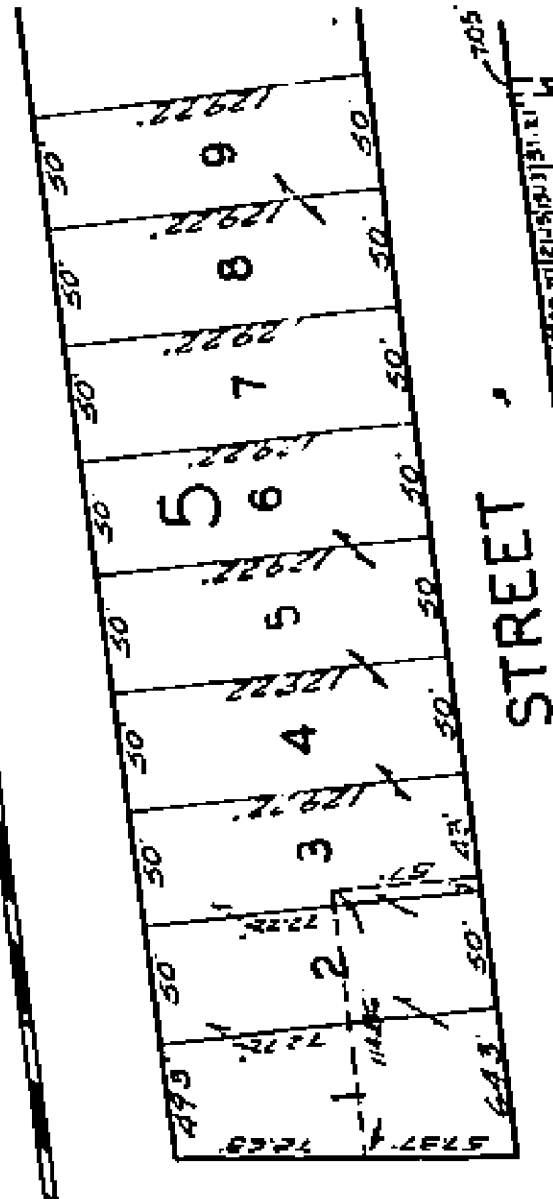
See Sheet No. 230

AVENUE

LOT I BLOCK 65
R. L. & J. CO. LANDS



AT & S.F. R.R.



1520

See Sheet No. 269