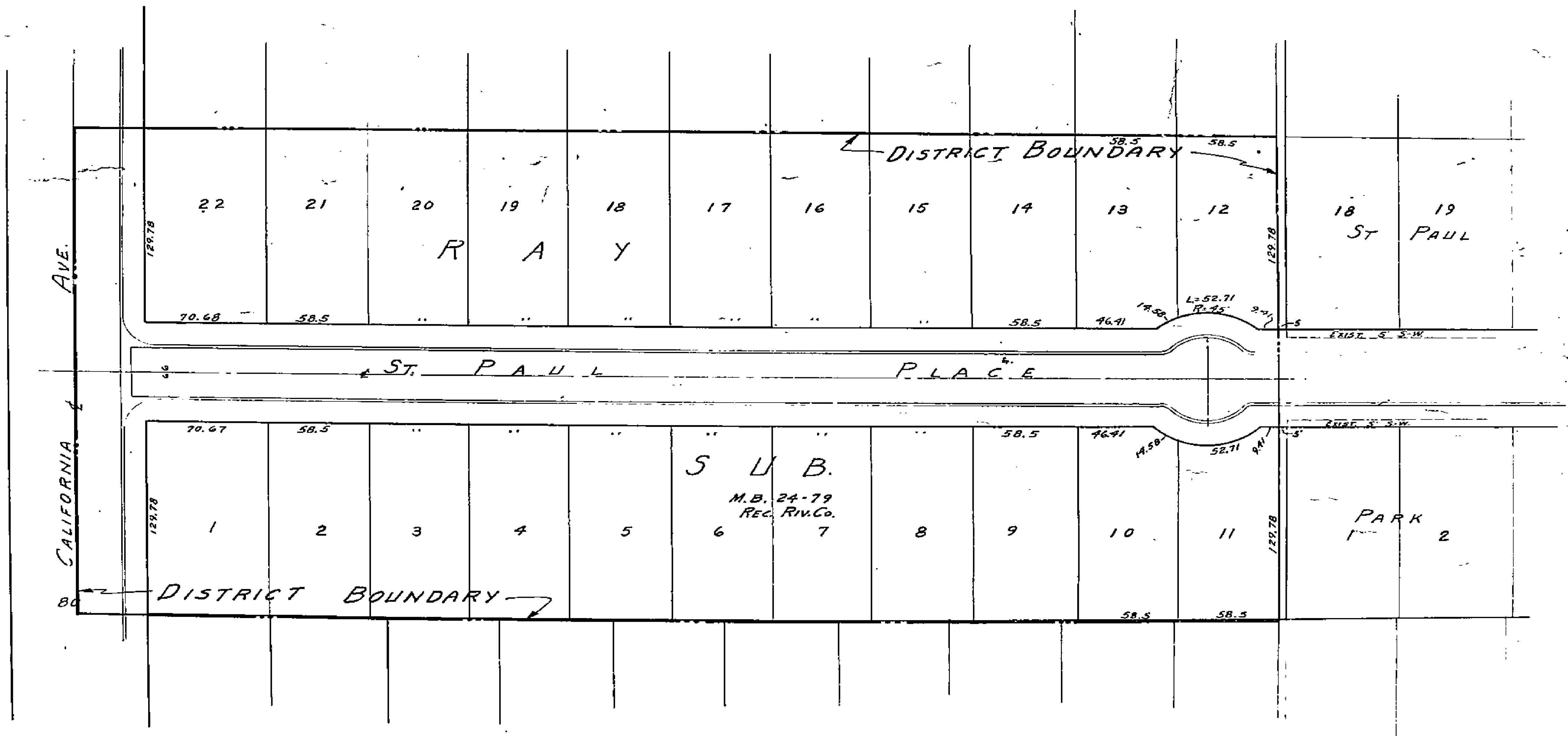
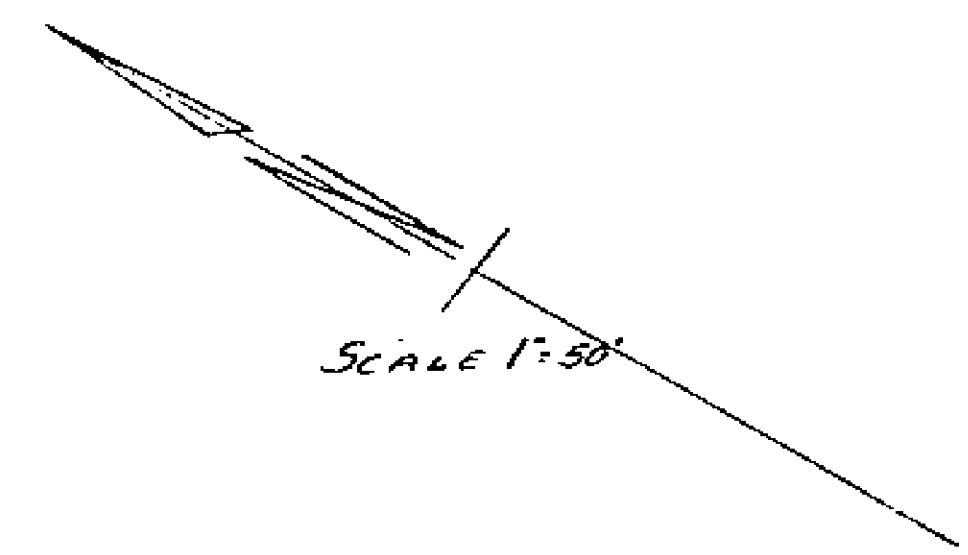


MAP NO. 1521-A  
 SHOWING THE LANDS INCLUDED WITHIN  
 THE ASSESSMENT DISTRICT TO BE BENEFITED  
 BY THE CONSTRUCTION OF SIDEWALKS  
 IN THE MATTER OF

# ST. PAUL PLACE SIDEWALK IMPROVEMENT DISTRICT

RIVERSIDE, CALIFORNIA  
 DISTRICT BOUNDARY SHOWN THUS \_\_\_\_\_  
 APRIL, 1955

APPROVED: *M. H. Irvine*  
 M.H. IRVINE - REG. C.E. NO. 3011  
 CITY ENGINEER



1521A