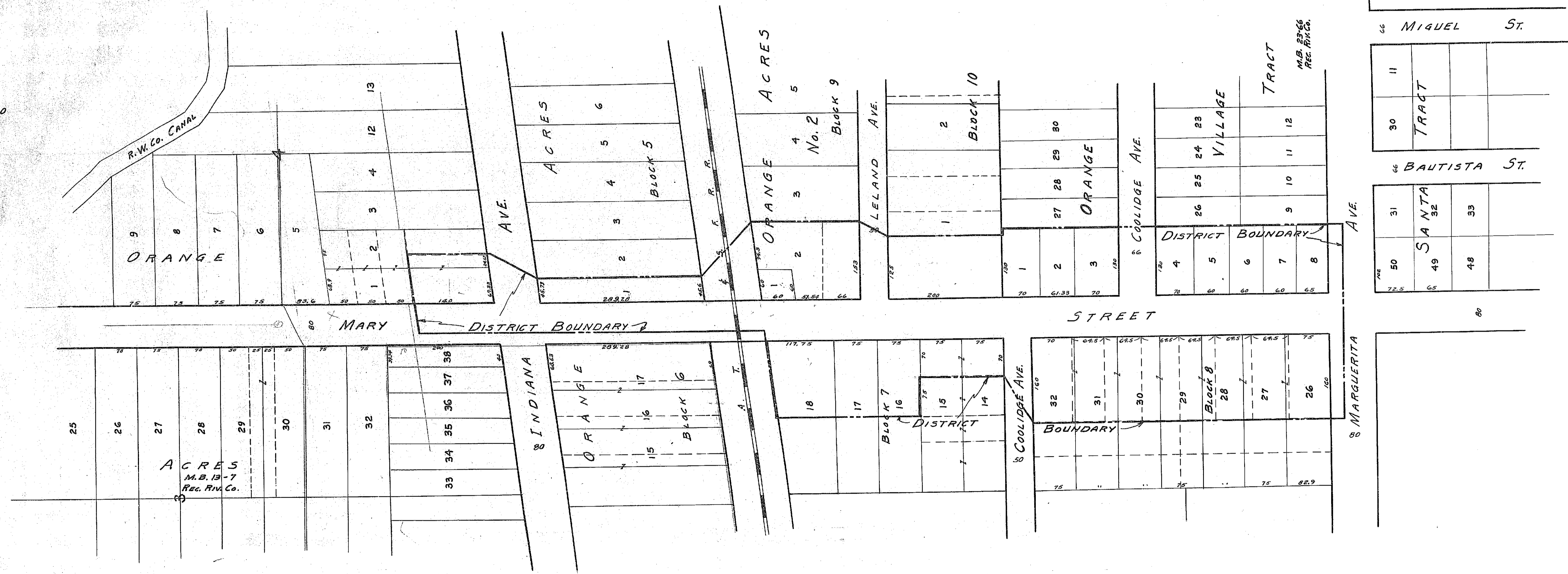


MAP NO. 1525-A
 SHOWING THE LANDS INCLUDED WITHIN
 THE ASSESSMENT DISTRICT TO BE BENEFITED
 BY THE CONSTRUCTION OF SANITARY SEWERS
 IN THE MATTER OF

MARY STREET SANITARY SEWER DISTRICT

BET. INDIANA AVE. & MARGUERITA AVE.
 RIVERSIDE, CALIFORNIA
 SCALE: 1 IN. = 100 FT. APRIL '55

APPROVED: *M. H. Irvine.*
 M. H. IRVINE - REG. C. E. NO. 3011
 CITY ENGINEER



66 MIGUEL ST.

30	31	32
TRACT		

66 BAUTISTA ST.

31	32
SANTA	
49	48
50	51

1525A