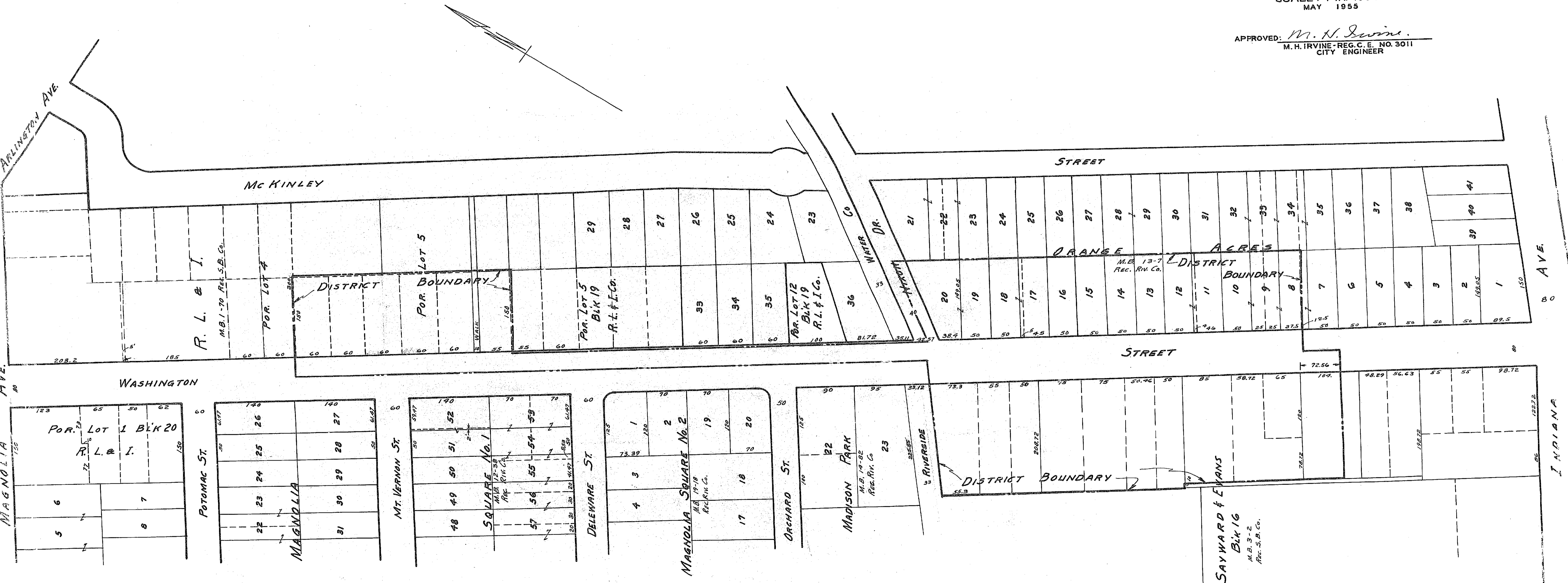


MAP NO. 1526-A
 SHOWING THE LANDS INCLUDED WITHIN
 THE ASSESSMENT DISTRICT TO BE BENEFITED
 BY THE CONSTRUCTION OF CURBS & GUTTERS
 IN THE MATTER OF

WASHINGTON ST. IMPROVEMENT DISTRICT

RIVERSIDE, CALIFORNIA
 DISTRICT BOUNDARY SHOWN THUS -----
 SCALE: 1" IN. = 100 FT.
 MAY 1955

APPROVED: *M. H. Irvine*
 M. H. IRVINE - REG. C. E. NO. 3011
 CITY ENGINEER



1526A