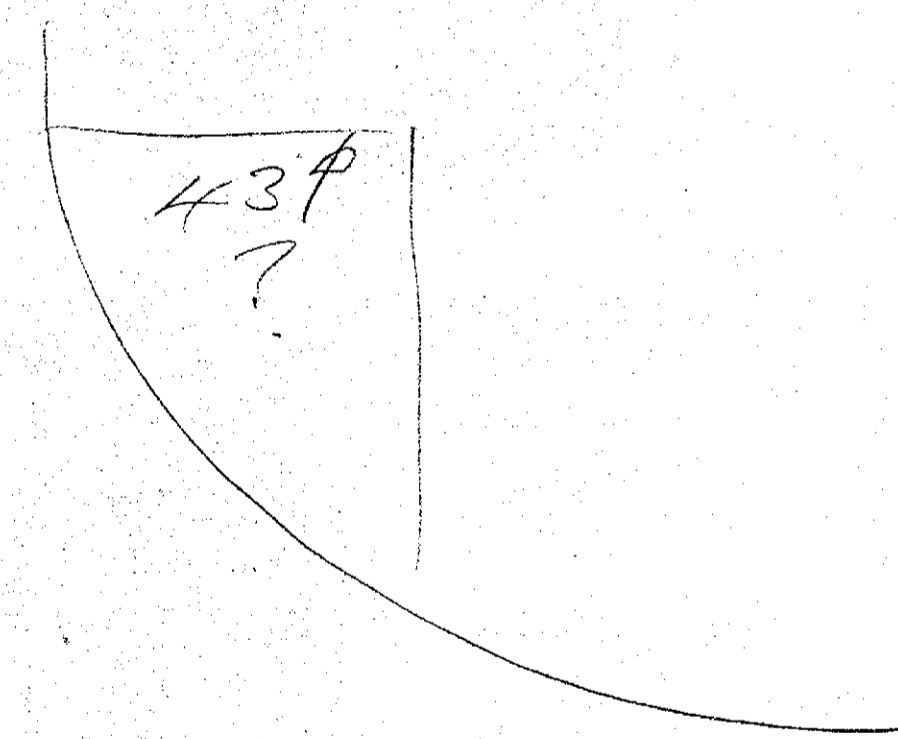
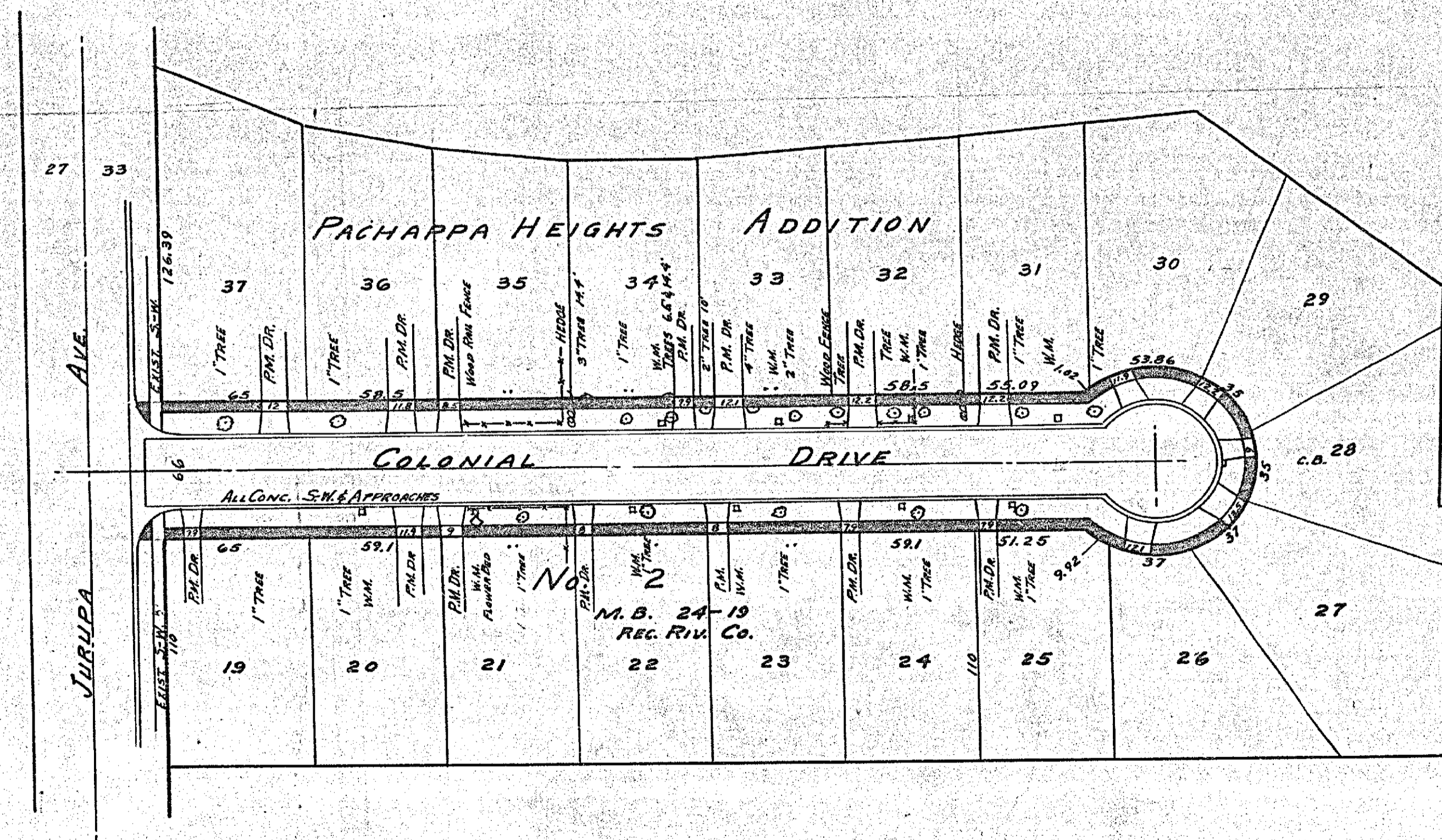
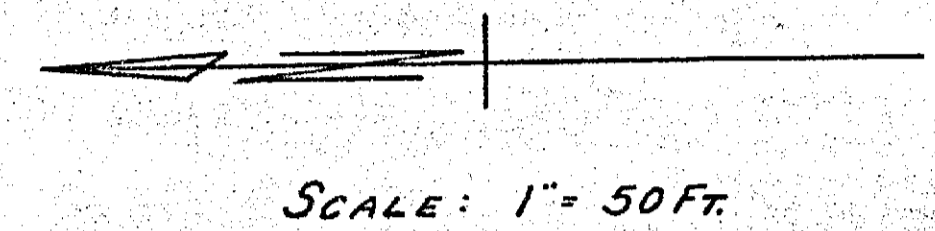


PLAN NO. 1527
 FOR THE CONSTRUCTION OF
 CONCRETE SIDEWALKS IN THE
COLONIAL DRIVE
SIDEWALK IMPROVEMENT
DISTRICT
 RIVERSIDE, CALIFORNIA
 APRIL 1955
 F.B. 573-14

APPROVED: _____
 M.H. IRVINE-REG. C.E. NO. 3011
 CITY ENGINEER



Typical Corner

1527