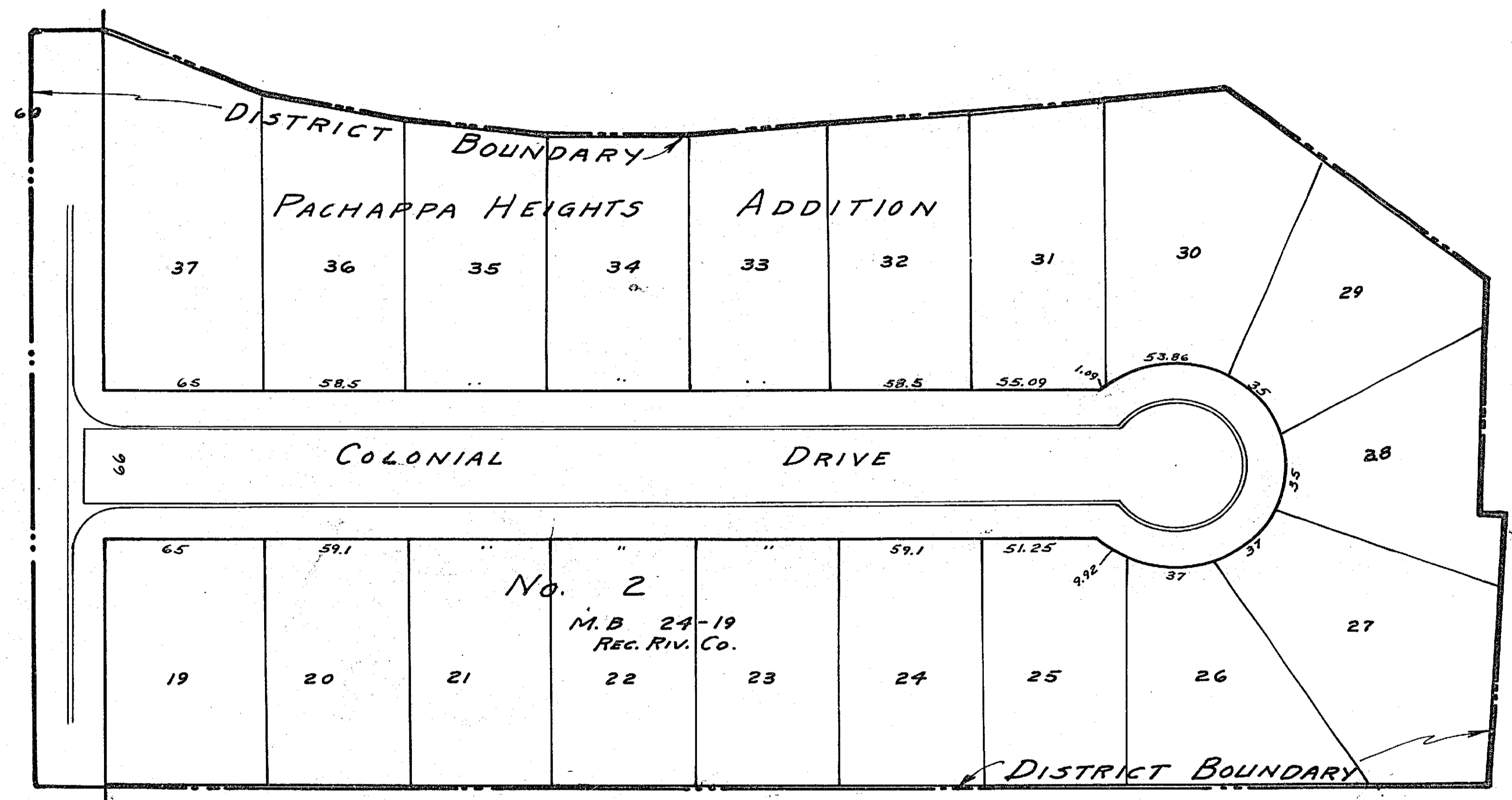


SCALE: 1" = 50 FT.

MAP NO. 1527-A
SHOWING THE LANDS INCLUDED WITHIN
THE ASSESSMENT DISTRICT TO BE BENEFITED
BY THE CONSTRUCTION OF CONCRETE SIDEWALKS
IN THE MATTER OF COLONIAL DRIVE
SIDEWALK IMPROVEMENT
DISTRICT

RIVERSIDE, CALIFORNIA
DISTRICT BOUNDARY SHOWN THUS -----
APRIL 1955

APPROVED: _____
M.H. IRVINE - REG. C.E. NO. 3011
CITY ENGINEER



1527 A