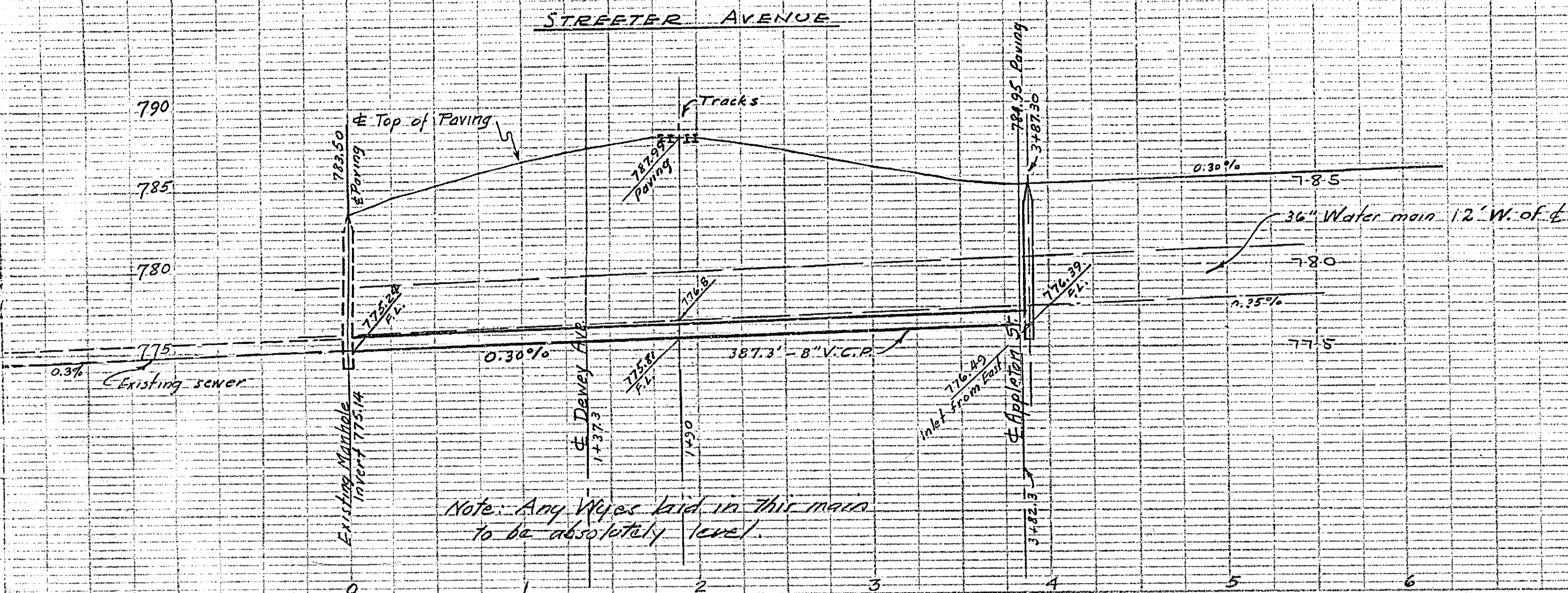


PROPERTY OF  
CITY OF RIVERSIDE  
DEPT. OF PUBLIC WORKS  
ENGINEERING DIVISION

PROPERTY OF  
CITY OF RIVERSIDE  
DEPT. OF PUBLIC WORKS  
ENGINEERING DIVISION

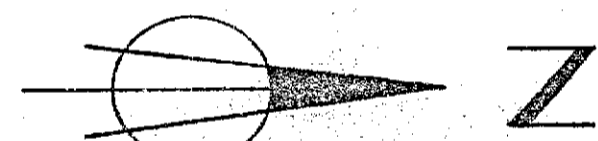
PROFILE  
Vertical Scale: 1" = 5'



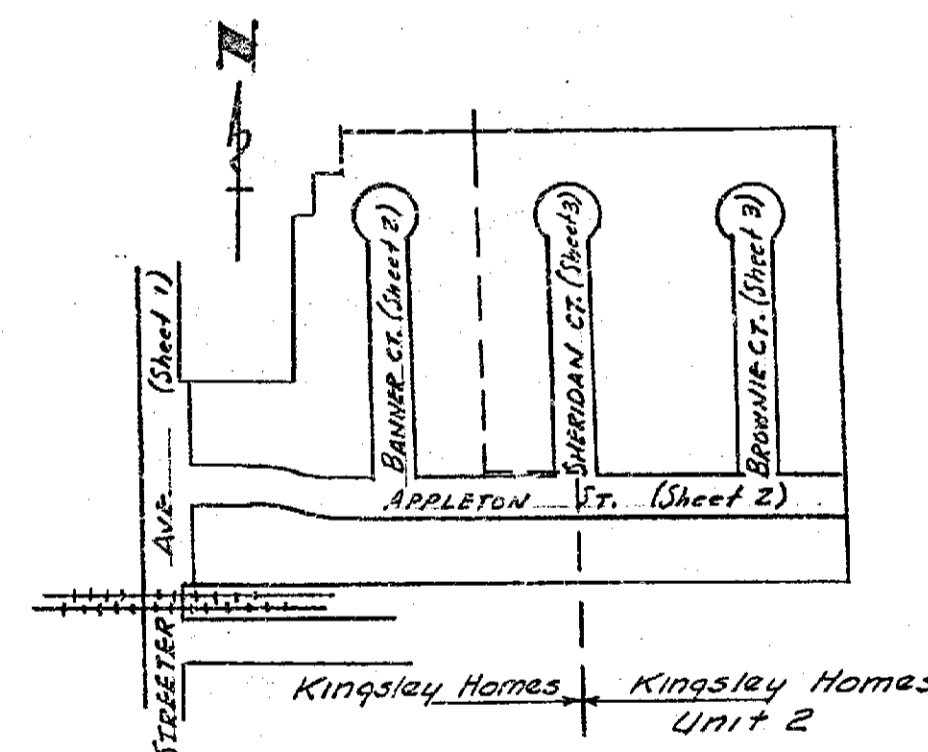
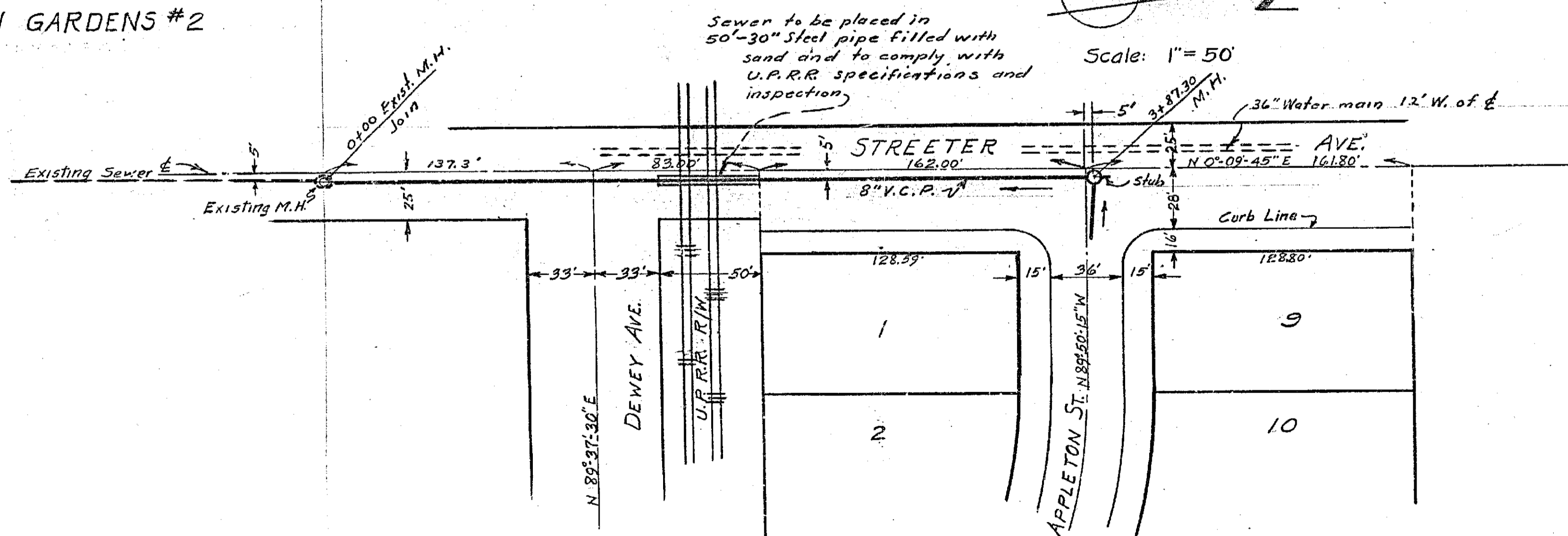
Note: Any Wyes laid in this main to be absolutely level.

B.M. 'X' on Fire Hyd. W. Side  
Streeter Ave. 130' S. of Dewey Ave.  
Elev. = 784.94

HALECREST  
SUN GARDENS #2



Scale: 1" = 50'



ESTIMATE OF QUANTITIES (Including Unit 2)

2690'	8" V.C.P.
1134'	4" V.C.P.
63	WYES
10	MANHOLES
1	CLEANOUTS

PROPERTY OF  
CITY OF RIVERSIDE  
DEPT. OF PUBLIC WORKS  
ENGINEERING DIVISION

PROPERTY OF  
CITY OF RIVERSIDE  
DEPT. OF PUBLIC WORKS  
ENGINEERING DIVISION

PREPARED BY *Albert A. Webb Associates*

APPROVED BY \_\_\_\_\_ DATE \_\_\_\_\_

CITY OF RIVERSIDE, CALIFORNIA  
DEPARTMENT OF PUBLIC WORKS

SEWER PLAN & PROFILE

KINGSLEY HOMES

STREETER AVE.

APPROVED BY *S. J. Mathis*  
DIRECTOR OF PUBLIC WORKS  
DATE 12-23-55

NO. 1530

SHEET 1 of 3

1530

LIV-146

PROPERTY OF  
CITY OF RIVERSIDE  
CITY ENGINEERING DEPT.

STREET PLANS AND PROFILES  
OF STREETER AVENUE AND DETAILS  
OF STORM DRAINAGE STRUCTURES

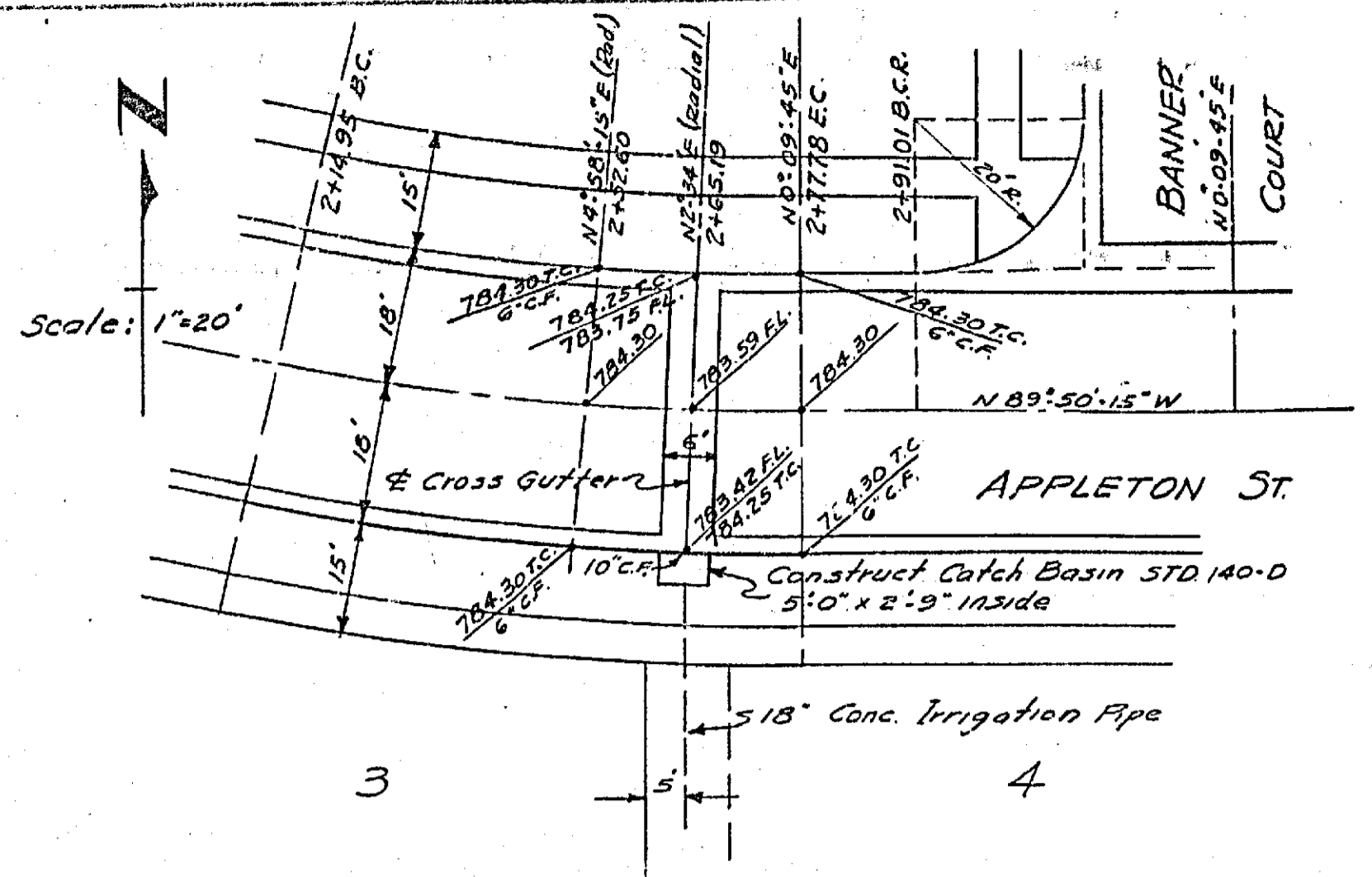
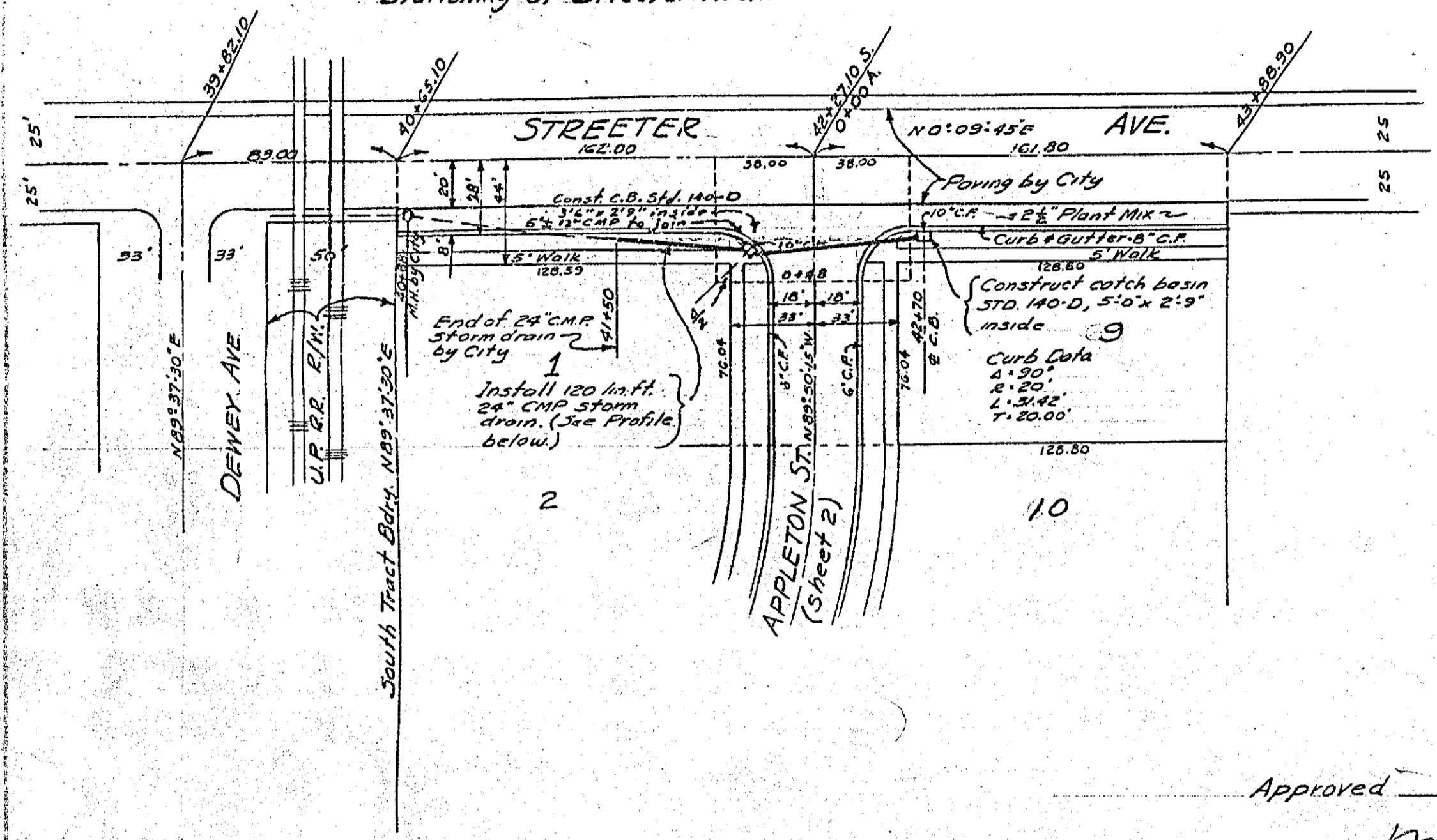
IN  
KINGSLEY HOMES  
CITY OF RIVERSIDE, CALIF.

BY  
ALBERT A. WEBB ASSOCIATES  
CIVIL ENGINEERS APRIL, 1955  
RIVERSIDE, CALIF.

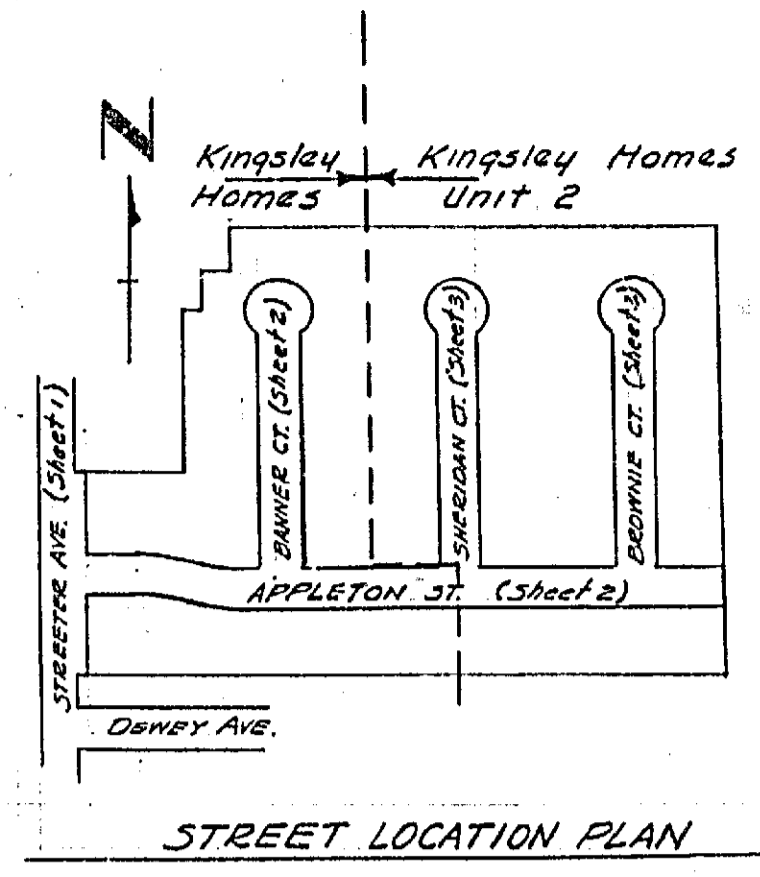
PROPERTY OF  
CITY OF RIVERSIDE  
CITY ENGINEERING DEPT.

Scale: 1"=50'

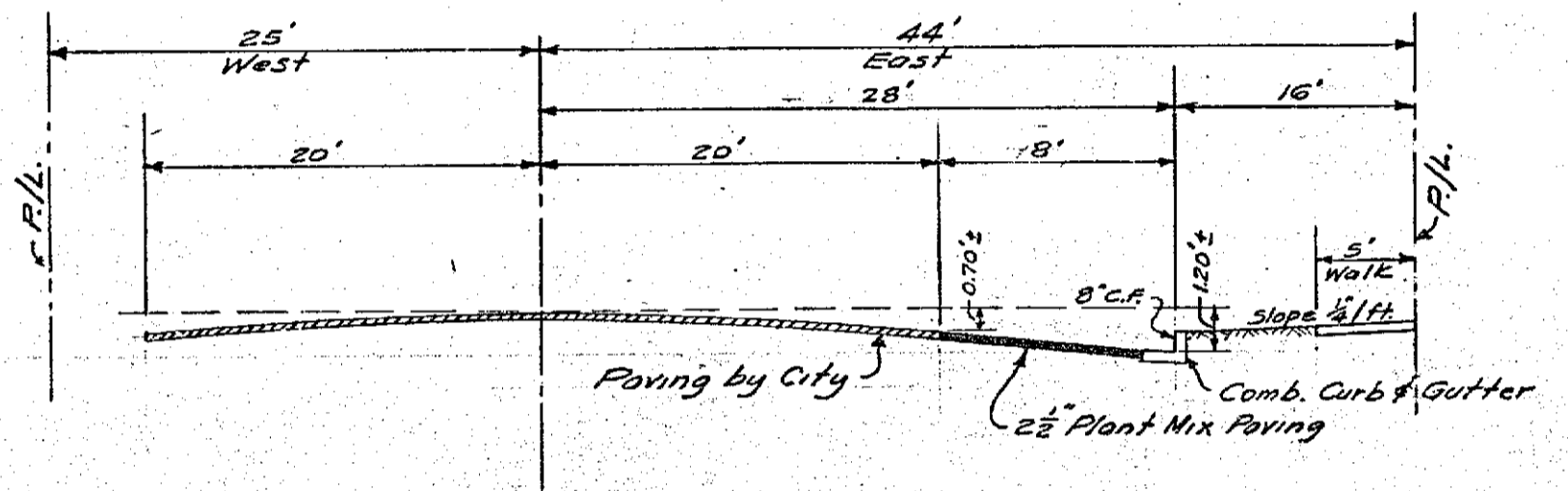
Refer to City Plan No. 1464,  
Sheet 4 of 5 for Details &  
Stationing of Streeter Ave.



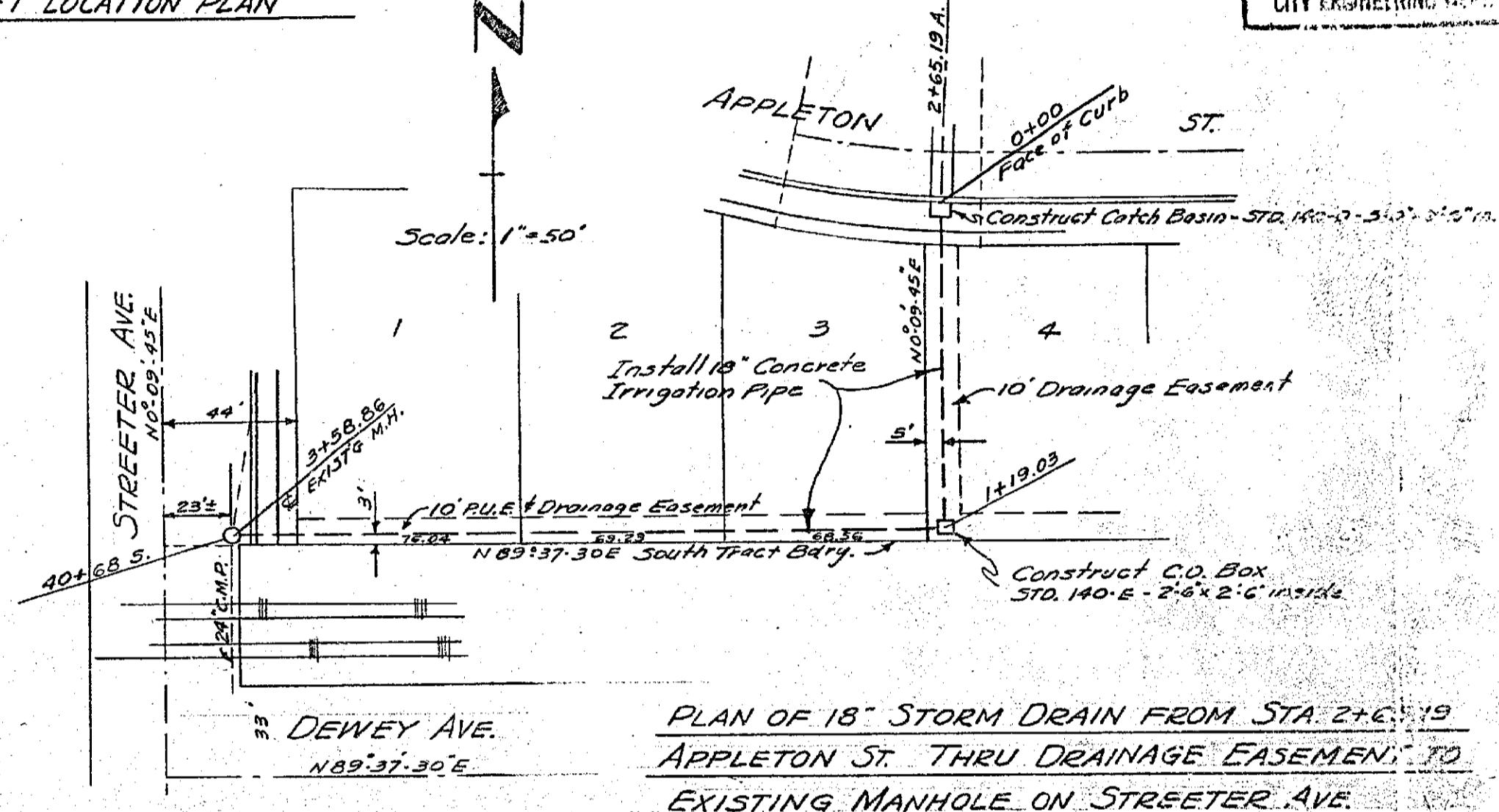
DETAIL OF CROSS GUTTER AT STA. 2+65.19 APPLETON ST.



STREET LOCATION PLAN



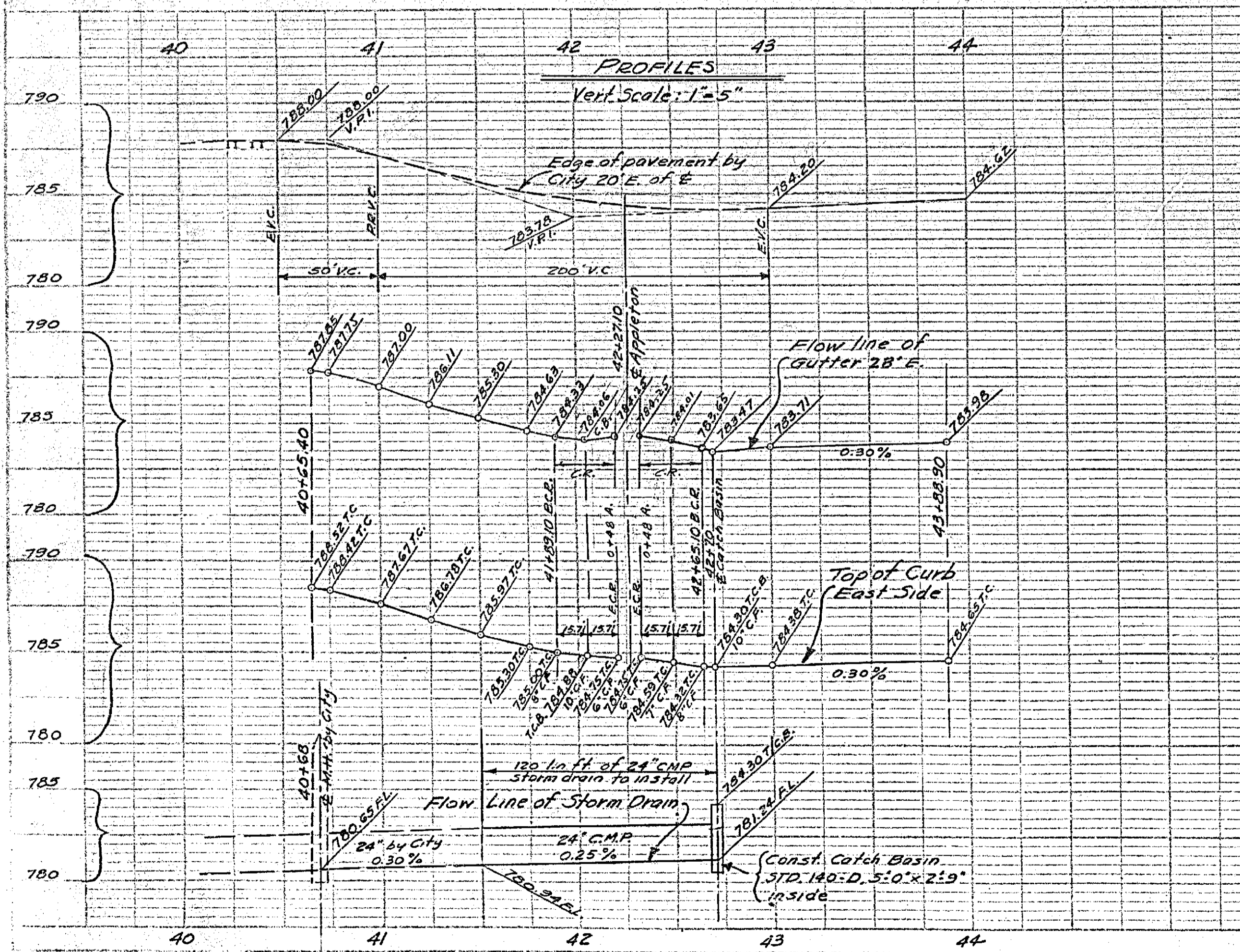
TYPICAL SECTION FOR STREETER AVENUE



PLAN OF 18" STORM DRAIN FROM STA. 2+65.19  
APPLETON ST. THRU DRAINAGE EASEMENT TO  
EXISTING MANHOLE ON STREETER AVE.

Approved 5-4-55

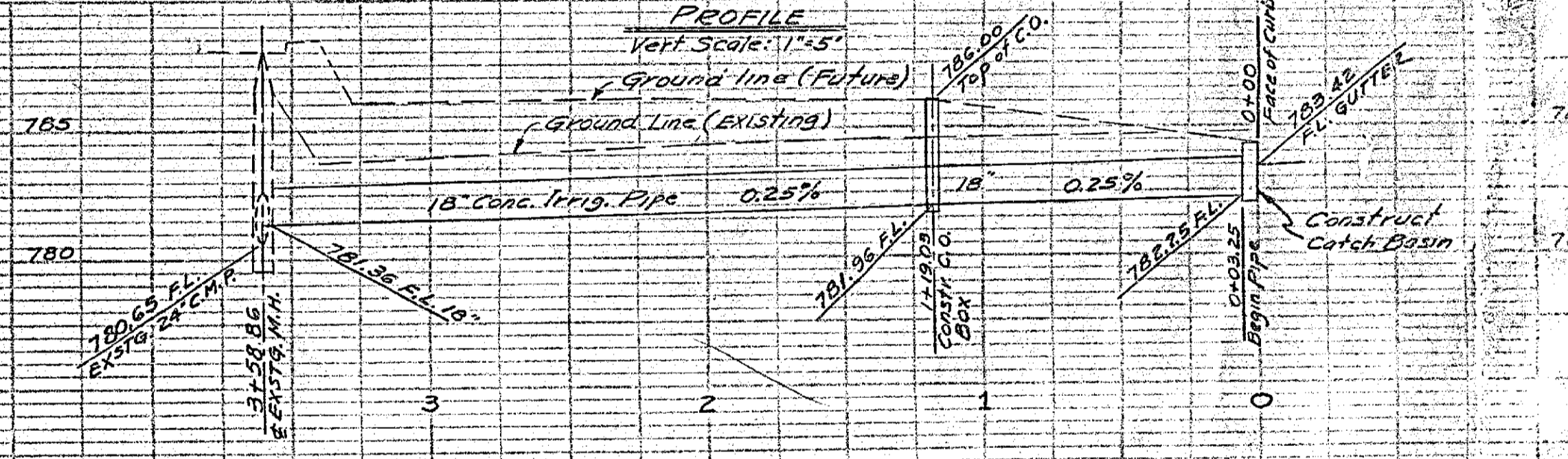
M. H. Swinn  
City Engineer, City of Riverside



Bench Mark - X on Fire Hydrant on West Side of Streeter  
150' South of Dewey - Elev. 784.94

APPROXIMATE QUANTITIES (Including Unit No. 2)

Cut Yardage (Streets)	5,200 cu yd
Fill Yardage (Streets)	3,700 "
Fill Yardage (Lots)	8,800 "
Shrinkage Allowance (22%)	1,936 "
<b>Total</b>	<b>8,800 cu yd</b>
Combination Curb & gutter (6" curb face)	4,845 lin. ft.
" " (8" curb face)	200 "
Sidewalk (5' wide x 2" thick)	28,160 sq. ft.
Plant Mix Paving (2" incl. seal coat)	15,380 sq. ft.
Concrete Cross gutters (6" thick)	1,400 sq. ft.
24" Corrugated Metal Pipe	120 lin. ft.
18" Concrete Irrigation Pipe	33.5 lin. ft.
Catch Basins (STD. 140-D)	3 ea.
Cleanout Box (STD. 140-E)	1 ea.
12" C.M. Pipe	5 lin. ft.



PROPERTY OF  
CITY OF RIVERSIDE  
CITY ENGINEERING DEPT.

PLATE 1-PLAN-PROFILE-F.A.S.  
CLEARING PAPER CO. S. F. CAL.  
No. 10000-1

1530

LIV 147