

PLAN NO. 1536  
 FOR THE CONSTRUCTION OF A SANITARY SEWER  
 IN THE  
**MONROE STREET**  
**SANITARY SEWER DISTRICT NO. 2**  
 RIVERSIDE CALIFORNIA

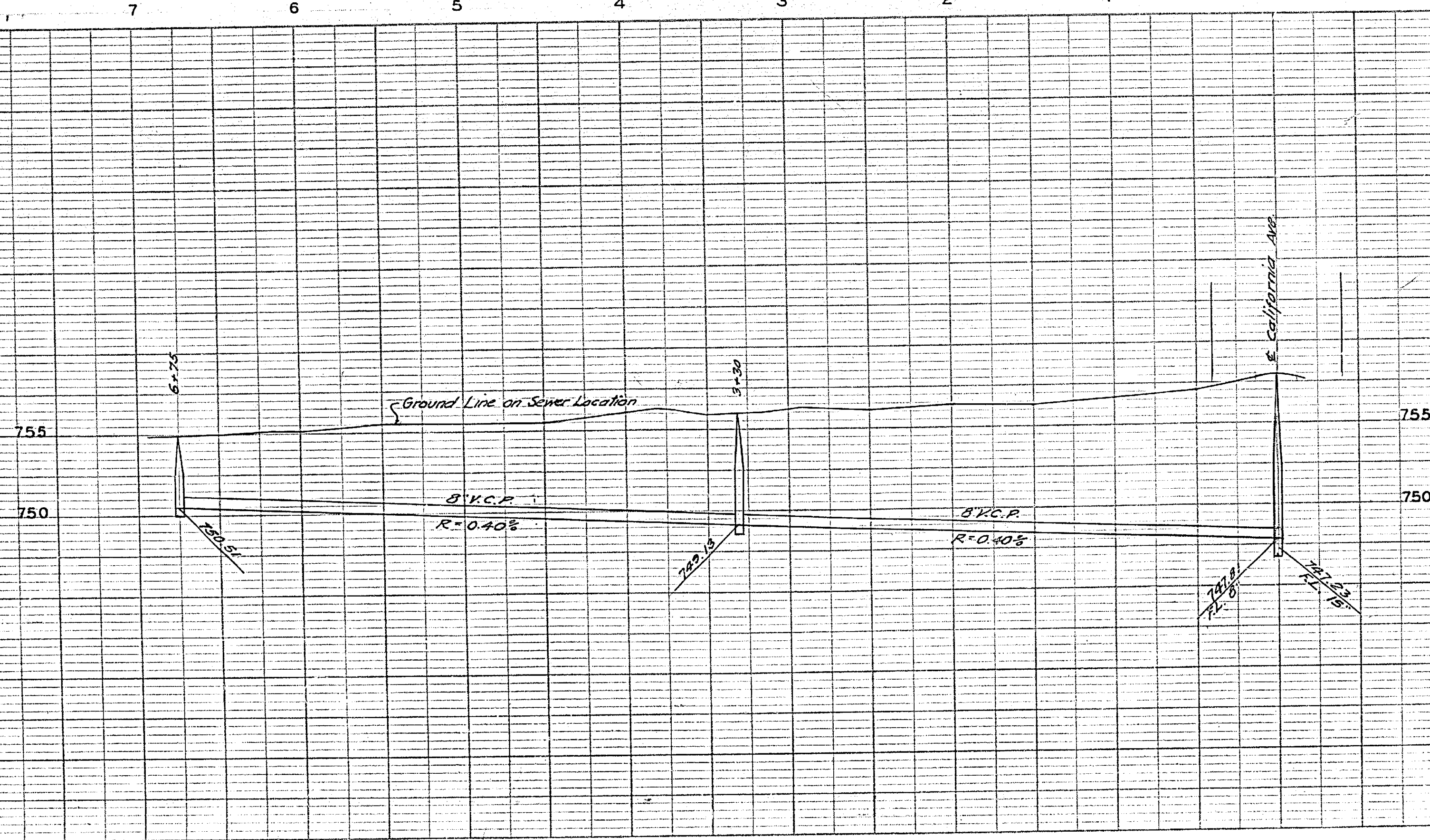
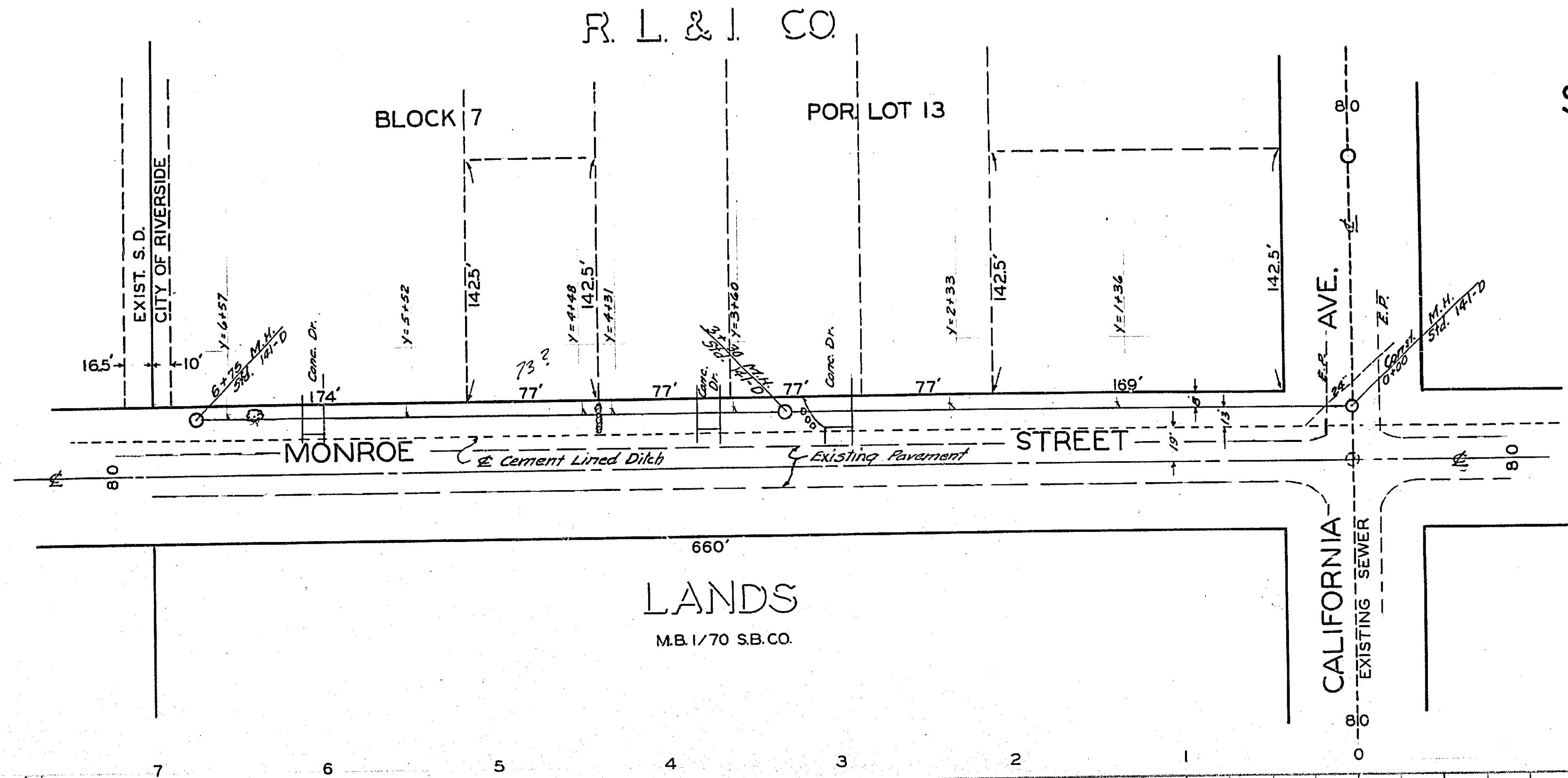
SCALE 1 IN. = 50 FT.  
 JULY 1955

APPROVED: \_\_\_\_\_  
 CITY ENGINEER

F.B. 572-35

B.M. PK. NAIL ON NW COR. OF  
 N. HEADWALL OF STORM DRAIN  
 AT CALIFORNIA AVE. AND  
 MONROE ST.  
 ELEV. 759.25

SCALE: HOR. 1" = 50'  
 VER. 1" = 5'



1536

Scale - 1" = 100'

See Sheet No 186

See Sheet No 195

80

660

15

660

660

16

CALIFORNIA

See Sheet No 205

660

10

660

BLOCK 8

Recorded in Book 1 of Maps, Page 70  
Records of San Bernardino County

660

9

660

660

7

660

Handwritten mark

8

660

Handwritten mark

660

660

DISTRICT BOUNDARY

MONROE STREET

STREET

80

169

77

77

77

77

77

174

330

330

165

165

330

1

2

3

4

5

142.5

10'

16.5'

DISTRICT BOUNDARY

BLOCK 7

AVENUE

202.5

100

74

56

56

30

13

660

12

660

5

660

169

246

77

77

77

77

174

330

330

165

165

330

See Sheet No 193

1536

194

ASSESSMENT NO. 417  
DIAGRAM



EXHIBITING MONROE STREET SANITARY SEWER DISTRICT NO. 2

IN THE CITY OF RIVERSIDE ON WHICH WORK HAS BEEN DONE UNDER THE OFFICIAL CONTRACT OF THE SUPERINTENDENT OF STREETS OF SAID CITY WITH HENRY B. STEVENS DATED JAN. 6 1956 FOR THE CONSTRUCTION OF A SANITARY SEWER AND APPURTENANCES

AS IS MORE PARTICULARLY DESCRIBED IN SAID CONTRACT TO WHICH REFERENCE IS HEREBY MADE FOR FURTHER PARTICULARS; SAID DIAGRAM ALSO SHOWS THE RELATIVE LOCATION OF EACH LOT PORTION OF LOT PIECE OR PARCEL OF LAND ASSESSED FOR THE WORK DONE NUMBERED IN CIRCLES TO CORRESPOND TO THE RED INK NUMBERS IN THE ASSESSMENT HEREIN FIGURES NEXT TO PROPERTY LINES SHOW LENGTH OF SAID LINES IN FEET. THE MARK (') MEANS FEET. PROPERTY LINES THAT DIFFER FROM THE RECORDED SUBDIVISIONS ARE SHOWN BY BROKEN LINES. THE DISTRICT BENEFITED IS BOUNDED BY A HEAVY DASHED LINE PROPERTY COVERED BY THIS ASSESSMENT IS SHOWN ON THE FOLLOWING RECORDED MAPS:

RIVERSIDE LAND AND IRRIGATING CO. M.B. 1-70 REC. S.B. CO.

HEREIN THE LEGEND OF THE DIFFERENT KINDS OF WORK PERFORMED IS SHOWN AS FOLLOWS:

SEWER MAIN AND WYE BRANCHES   
MANHOLE 

CITY ENGINEER OF THE CITY OF RIVERSIDE  
THE FOLLOWING IS A STATEMENT OF AMOUNTS OF DIFFERENT KINDS OF WORK DONE BY HENRY B. STEVENS UNDER CONTRACT DATED JANUARY 6 1956 PURSUANT TO RESOLUTION OF INTENTION NO. 6944 ADOPTED BY THE CITY COUNCIL OF THE CITY OF RIVERSIDE ON THE 25TH DAY OF OCTOBER 1955

675.1 LIN. FT. 8" VIT. CLAY PIPE SEWER AND WYE BRANCHES  
3 STD. MANHOLES

AT SAID CITY OF RIVERSIDE THIS 9TH DAY OF MARCH 1956

CITY ENGINEER  
OF THE CITY OF RIVERSIDE

I HEREBY CERTIFY THAT THE ABOVE WORK WAS DONE IN ACCORDANCE WITH LINES AND GRADES FURNISHED BY ME AND THAT THE DIAGRAM OF THE ASSESSMENT DISTRICT FOR THE SAME IS CORRECT

CITY ENGINEER  
OF THE CITY OF RIVERSIDE

RECORDED AT 1:25 O'CLOCK P.M.  
THIS 25TH DAY OF APRIL 1956

SUPERINTENDENT OF STREETS  
OF THE CITY OF RIVERSIDE

1536