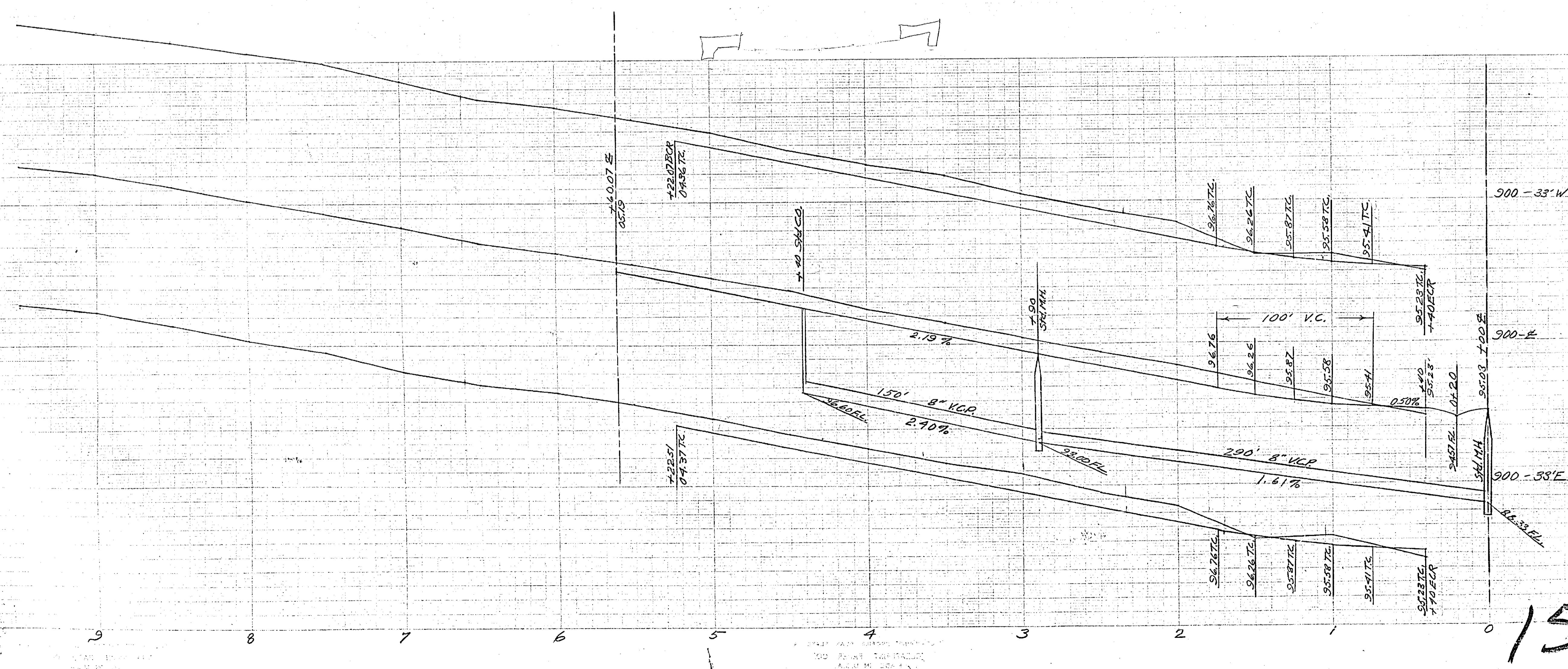
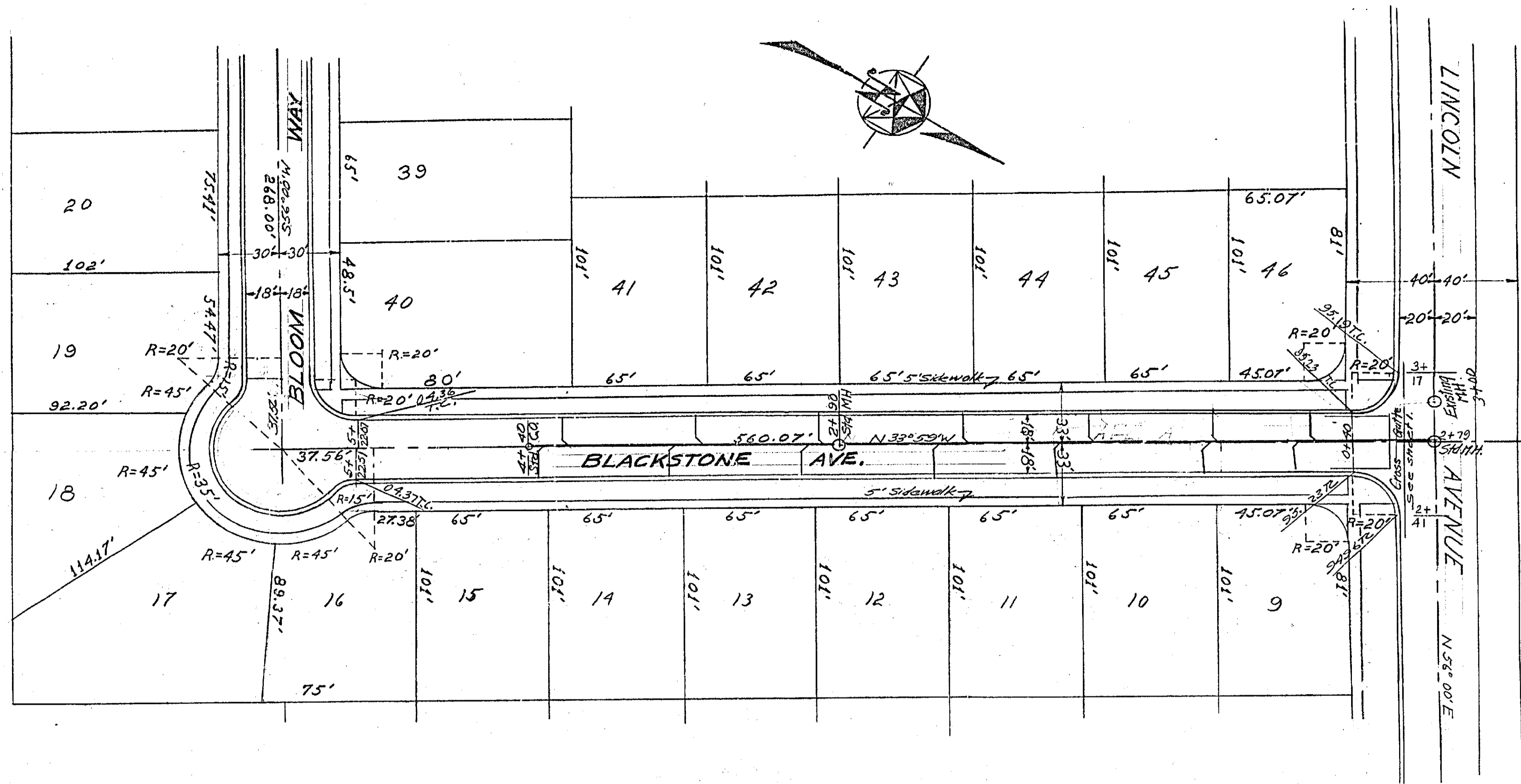


Approved *Lee S. Whidden* July 21, 1955  
C.E. 1793  
City of Riverside

PLAN AND PROFILE  
**MADISON STREET**  
ORANGEDALE MANOR UNIT #1  
JULY 1955 - J.F. DAVIDSON - C.E.  
SCALE: HORIZ. 1"=40'  
VERT. 1"=4'

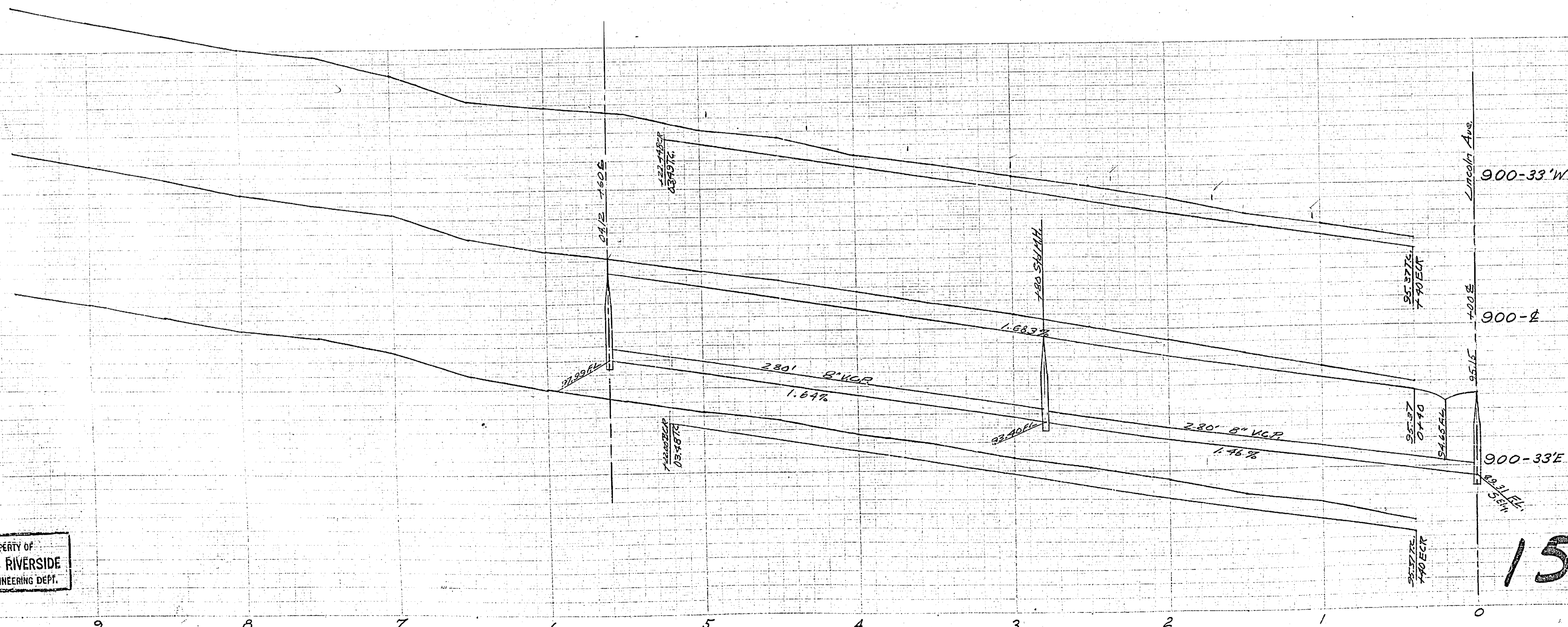
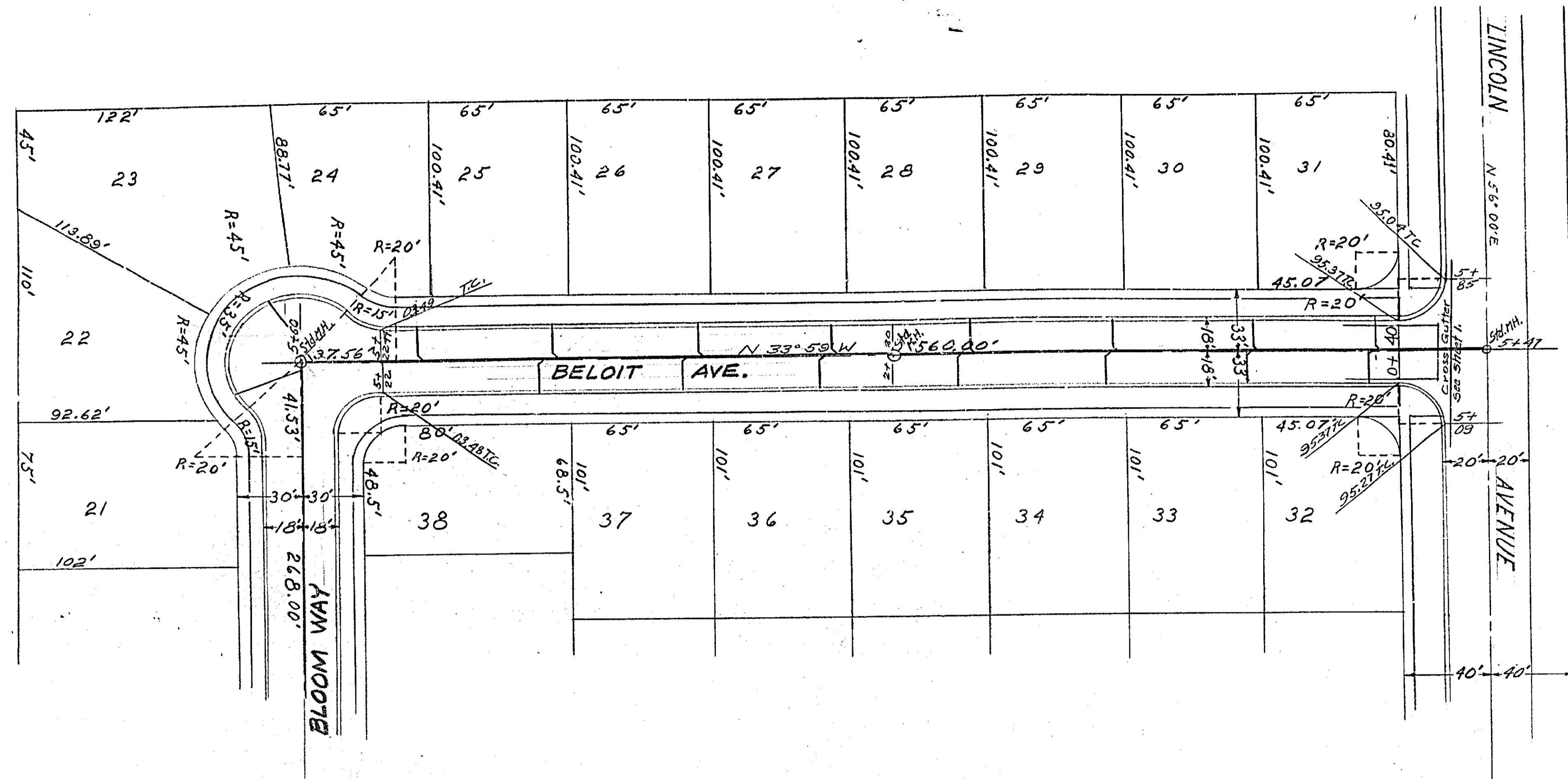


Approved: *R.S. [Signature]* July 21, 1955.  
RE. 1783 For the City  
of Riverside

PLAN AND PROFILE  
**BLACKSTONE AVE.**  
ORANGEDALE MANOR UNIT  
JULY 1955 J.F. DAVIDSON C  
SCALE: HORIZ. 1"=40'  
VERT. 1"=4'

1539

PROPERTY OF  
CITY OF RIVERSIDE  
CITY ENGINEERING DEPT.

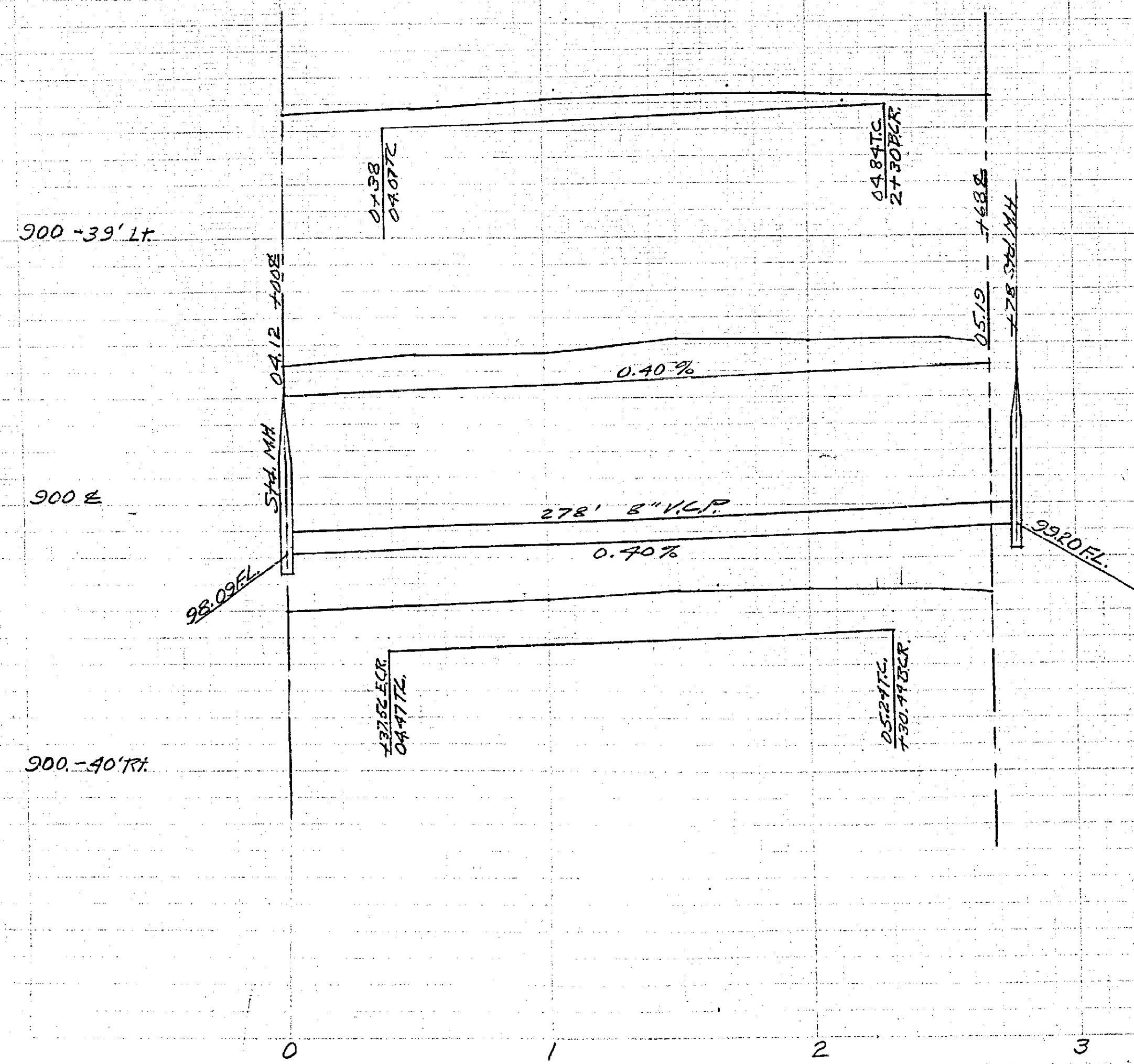
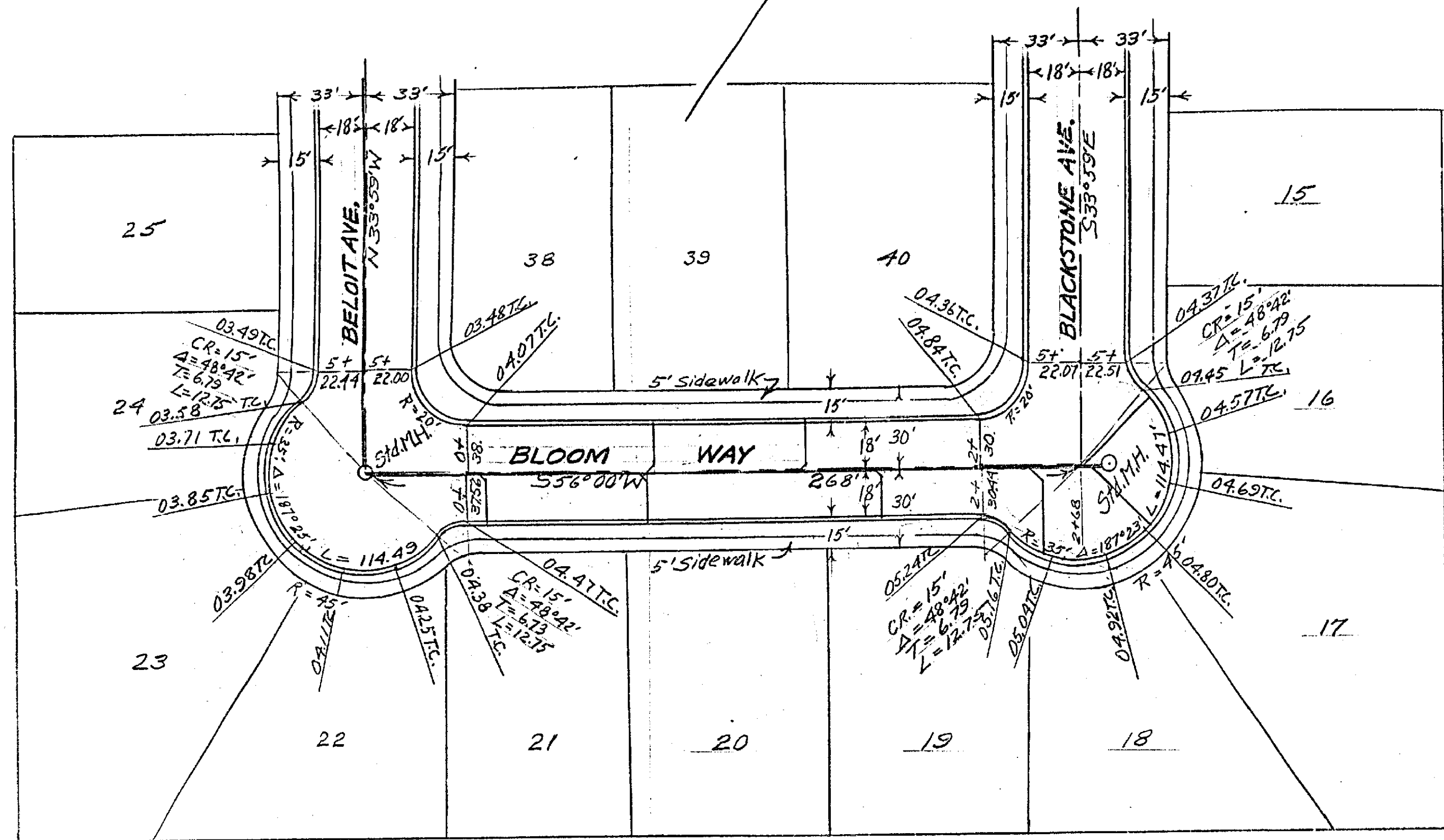


Approved *S. M. Whidden* July 21, 1955  
R.E. 1703 For the City of Riverside

PLAN AND PROFILE  
**BELOIT AVE.**  
ORANGEDALE MANOR UNIT  
JULY 1955 J. F. DAVIDSON  
SCALE: HORIZ. 1" = 40'  
VERT. 1" = 4'

1539

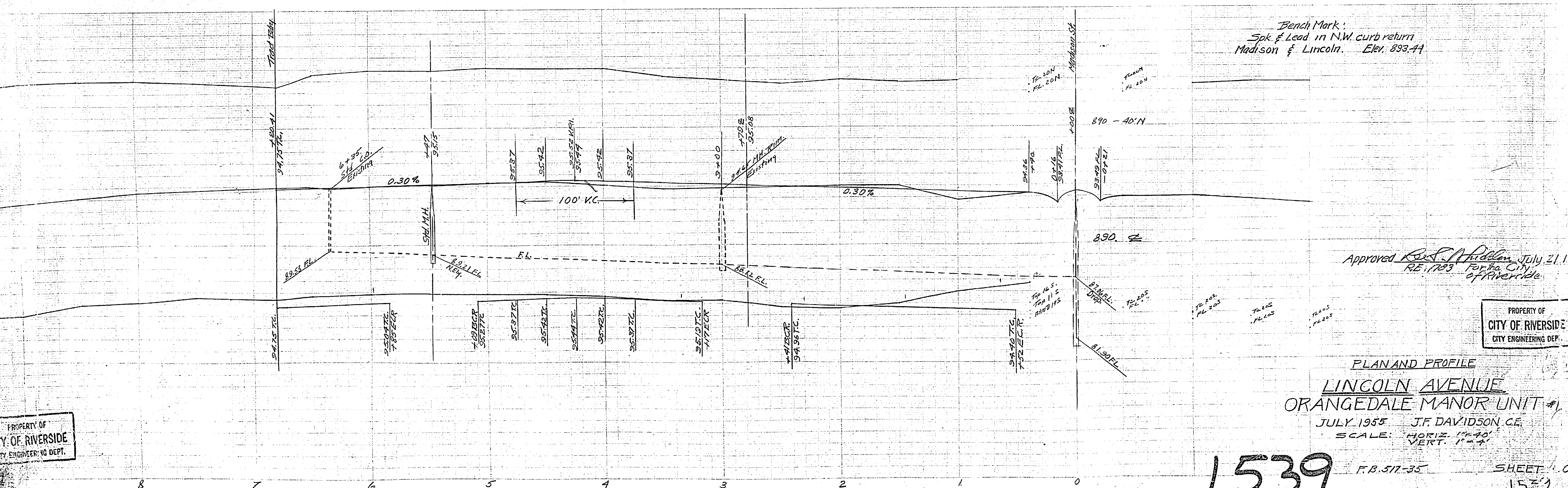
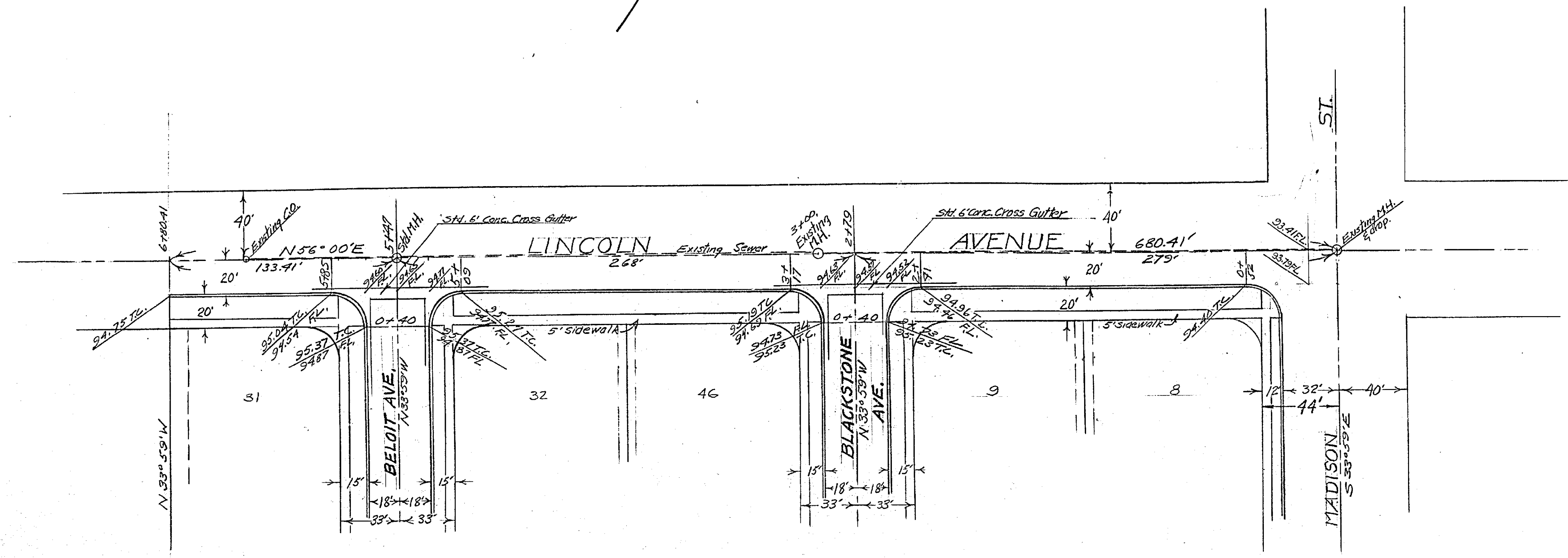
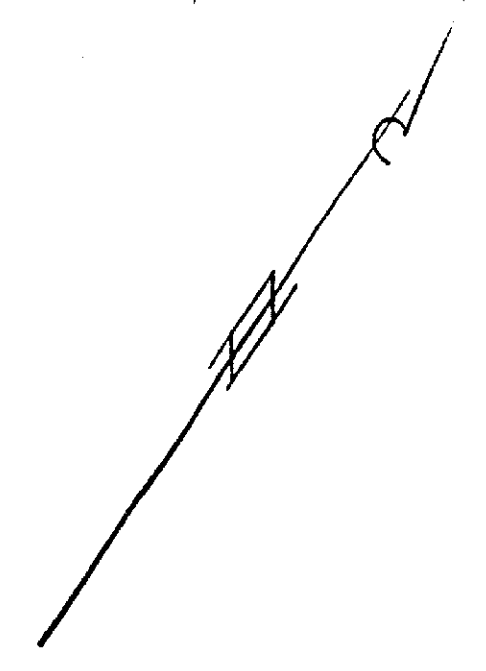
PROPERTY OF  
CITY OF RIVERSIDE  
CITY ENGINEERING DEPT.



Approved *Dr. S. W. ...* July 21, 1955  
RE. 1703 For the City of Riverside

PLAN AND PROFILE  
**BLOOM WAY**  
ORANGEDALE MANOR UNIT #1  
JULY 1955 ~ J.F. DAVIDSON CE  
SCALE: HORIZ. 1"=40'  
VERT. 1"=4'

1539



PLAN AND PROFILE  
**LINCOLN AVENUE**  
ORANGEDALE MANOR UNIT #1  
JULY 1955 J.F. DAVIDSON C.E.  
SCALE: HORIZ. 1"=40'  
VERT. 1"=4'

1539