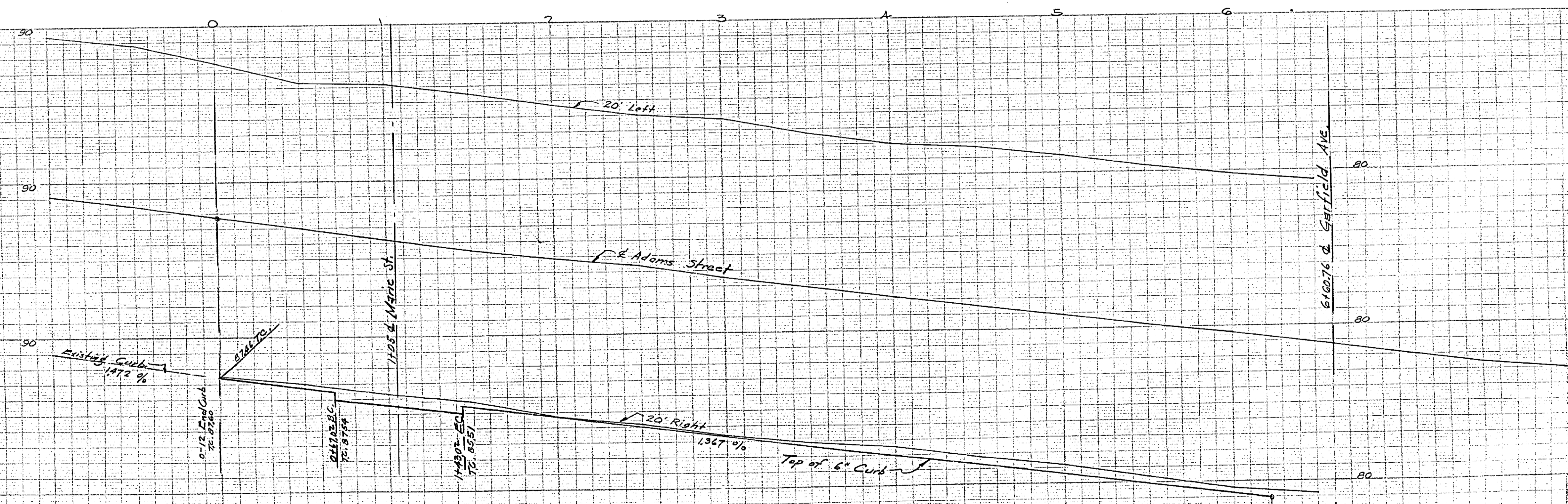


MAP  
Scale: 1" = 40'



PROFILE  
Scale: Horiz. 1" = 40'  
Vert. 1" = 4'

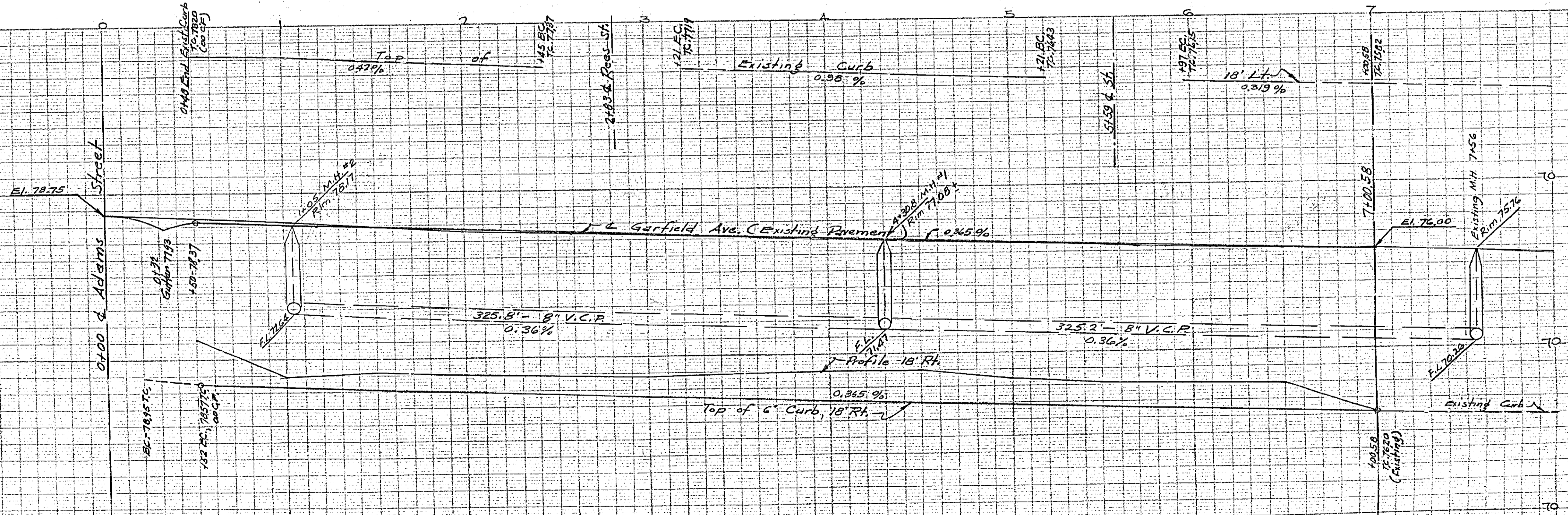
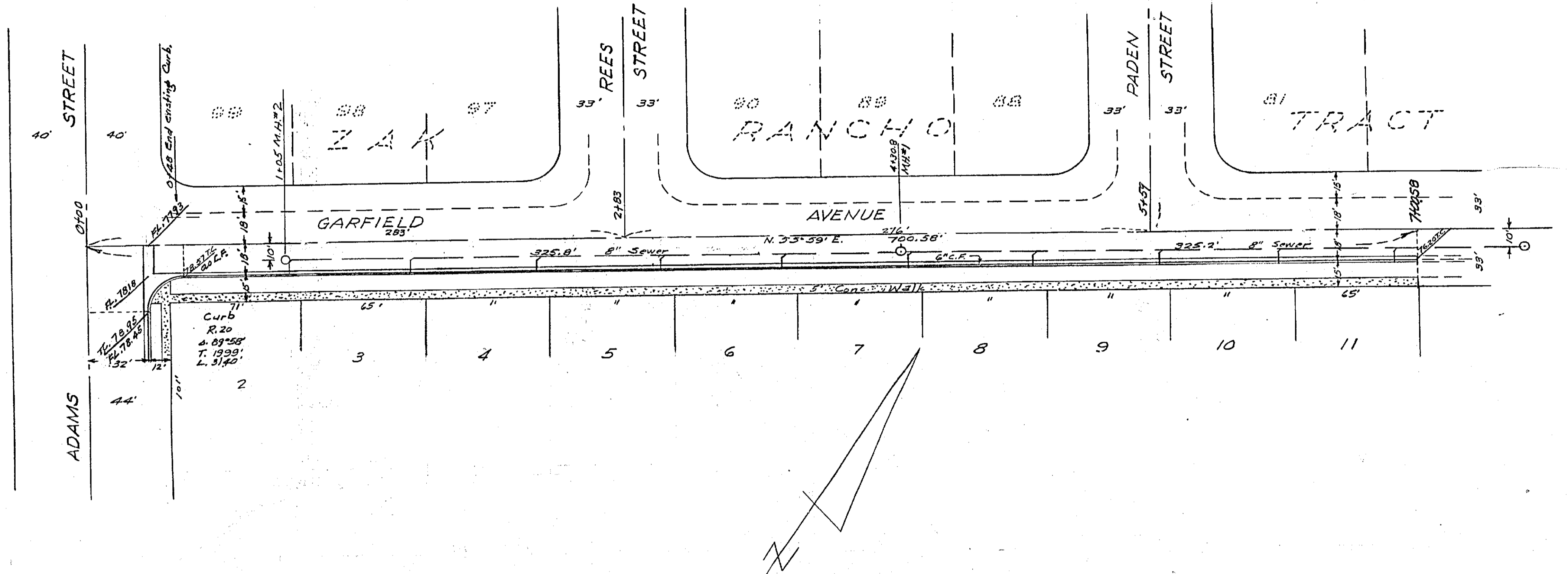
Approved *Ed. S. Whitten* July 21, 1955  
R.E. 1222 For the City of Riverside

ADAMS STREET HOMES  
July, 1955

Donald J. McKee - Licensed Surveyor  
Riverside, California

Sheet No. 1 of 4

1540



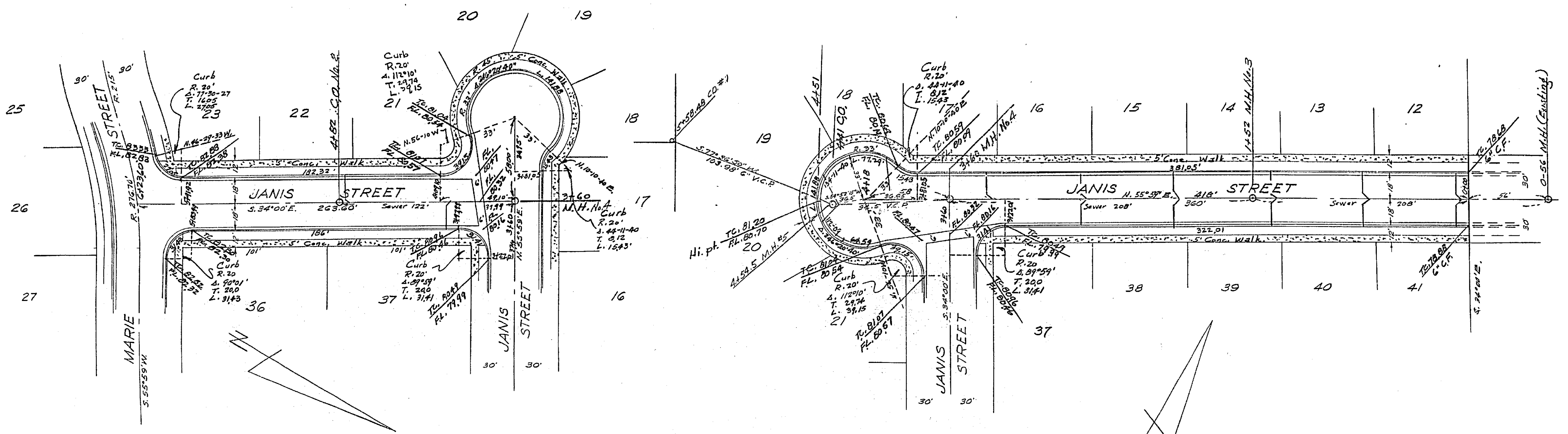
PROFILE  
GARFIELD AVE  
Scale Horiz. 1"=40'  
Vert. 1"=4'

Approved *Lee S. Whidden* July 21, 1955  
RE. 1793 For the City of Riverside

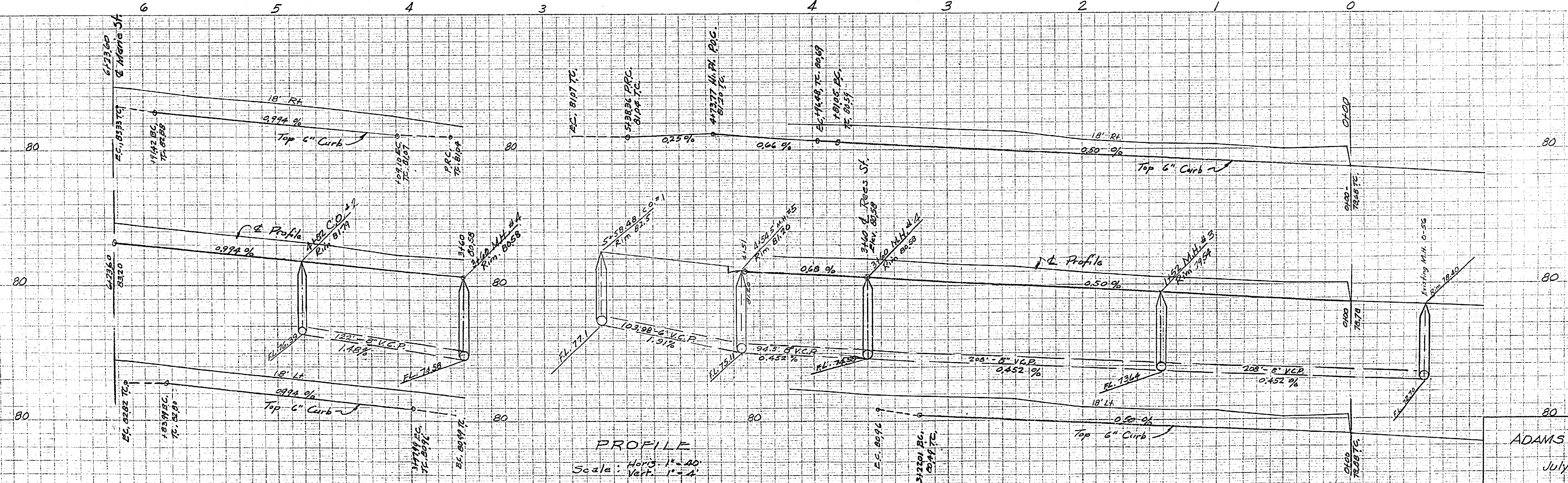
ADAMS STREET HOME'S  
July, 1955  
Donald J. McKee - Licensed Surveyor  
Riverside, California

Sheet No. 2 of 4

1540



MAP  
Scale: 1" = 40'



PROFILE  
Scale: Horiz. 1" = 40'  
Vert. 1" = 4'

PROPERTY OF  
CITY OF RIVERSIDE  
CITY ENGINEERING DEPT.

ADAMS STREET HOMES  
July, 1955

Approved for S. Whitten July 21, 1955  
RE-1783 For the City of Riverside

Donald J. McKee - Licensed Surveyor  
Riverside, California

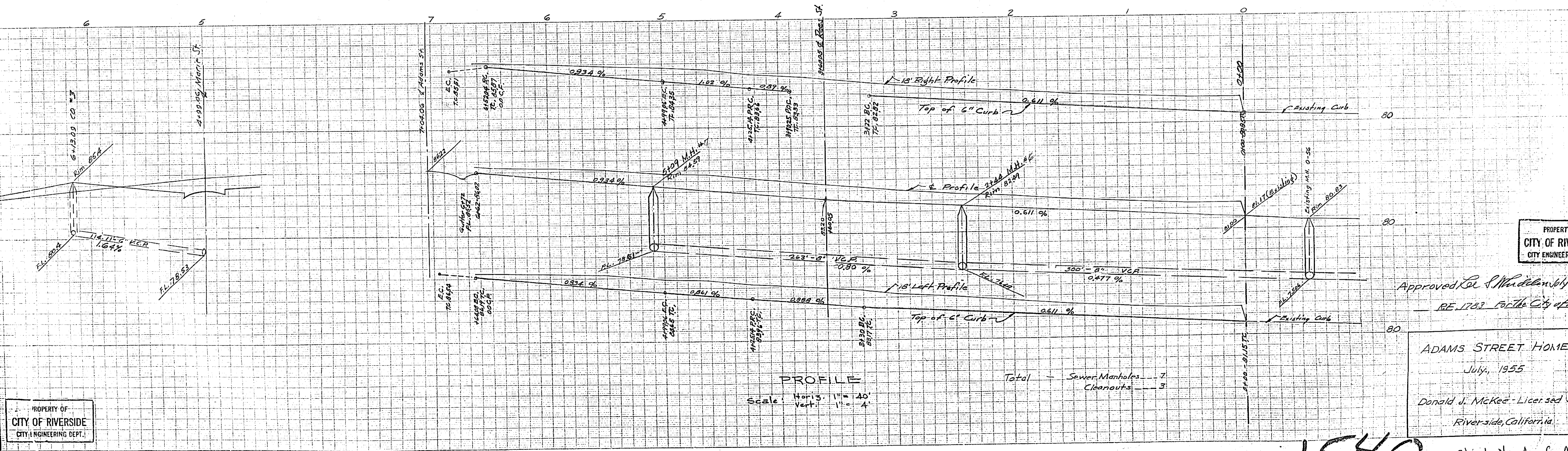
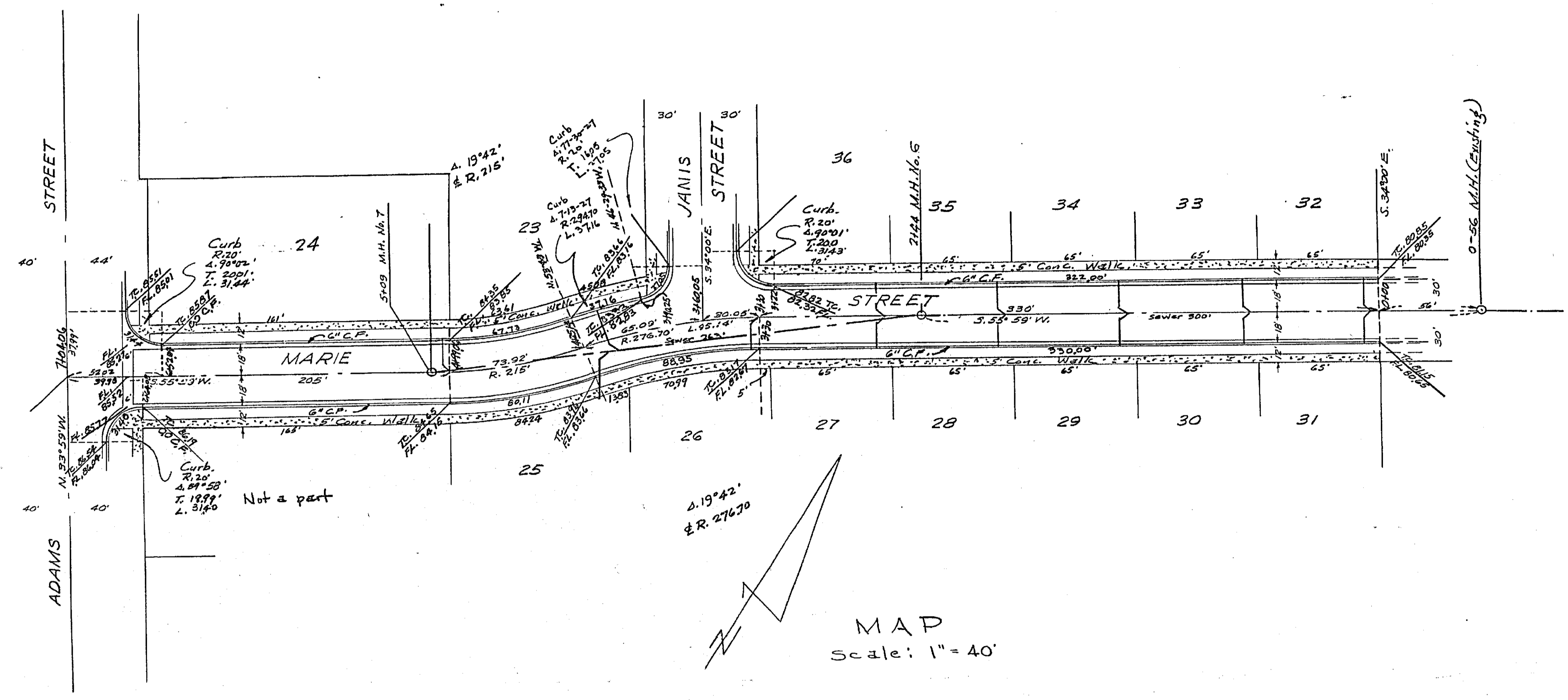
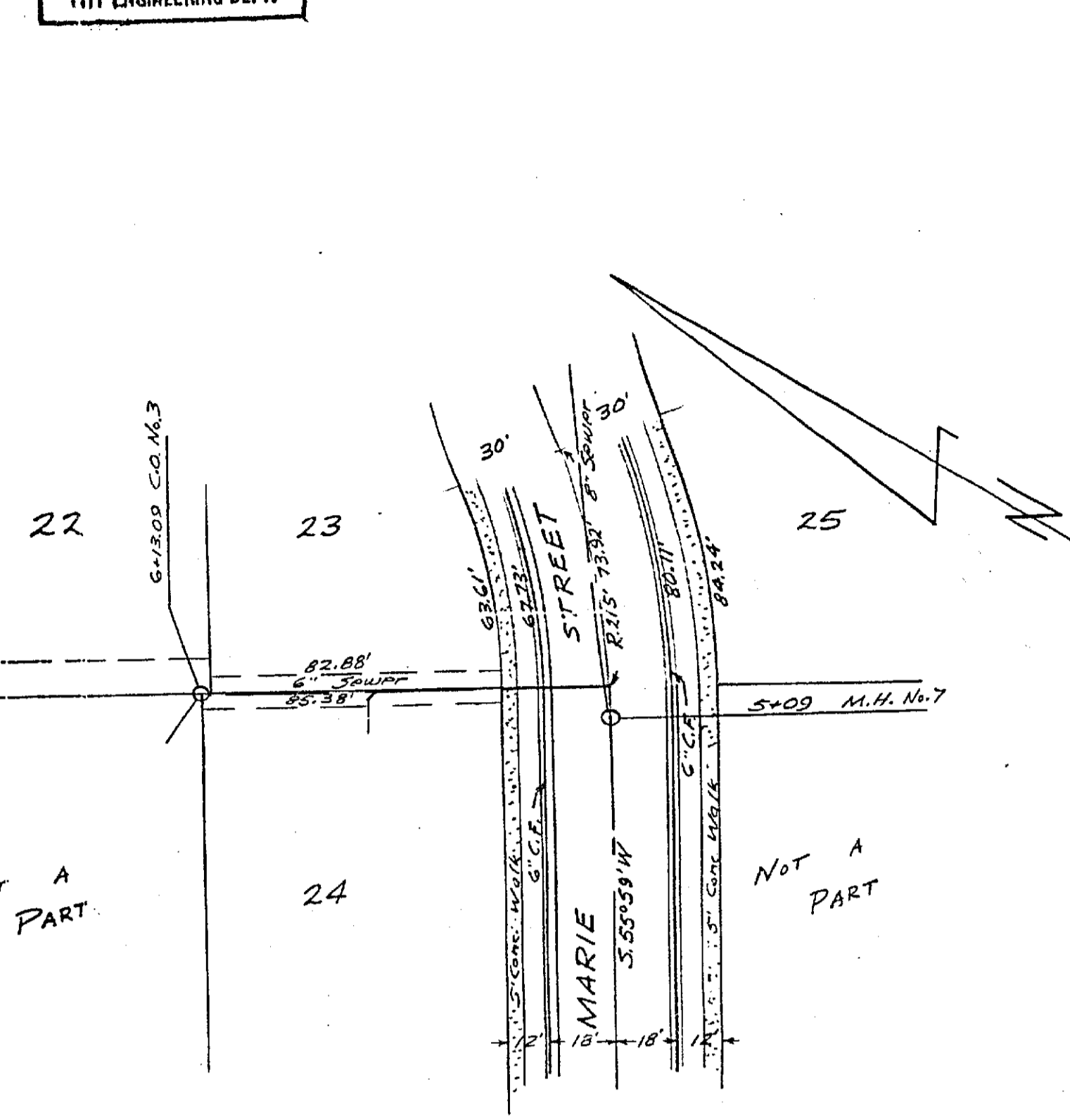
1540

Sheet No. 3 of 4

PROPERTY OF  
CITY OF RIVERSIDE  
ENGINEERING DEPT.

MADE IN U.S.A.  
CLEARPRINT PAPER CO.  
CLEARPRINT PROFILE PLAN PLATE A

MADE IN U.S.A.  
CLEARPRINT PAPER CO.  
CLEARPRINT PROFILE PLAN PLATE A



Approved: *Le S. ...*  
RE. 1782 For the City of  
ADAMS STREET HOMES  
July, 1955  
Donald J. McKee - Licensed  
Riverside, California.

1540