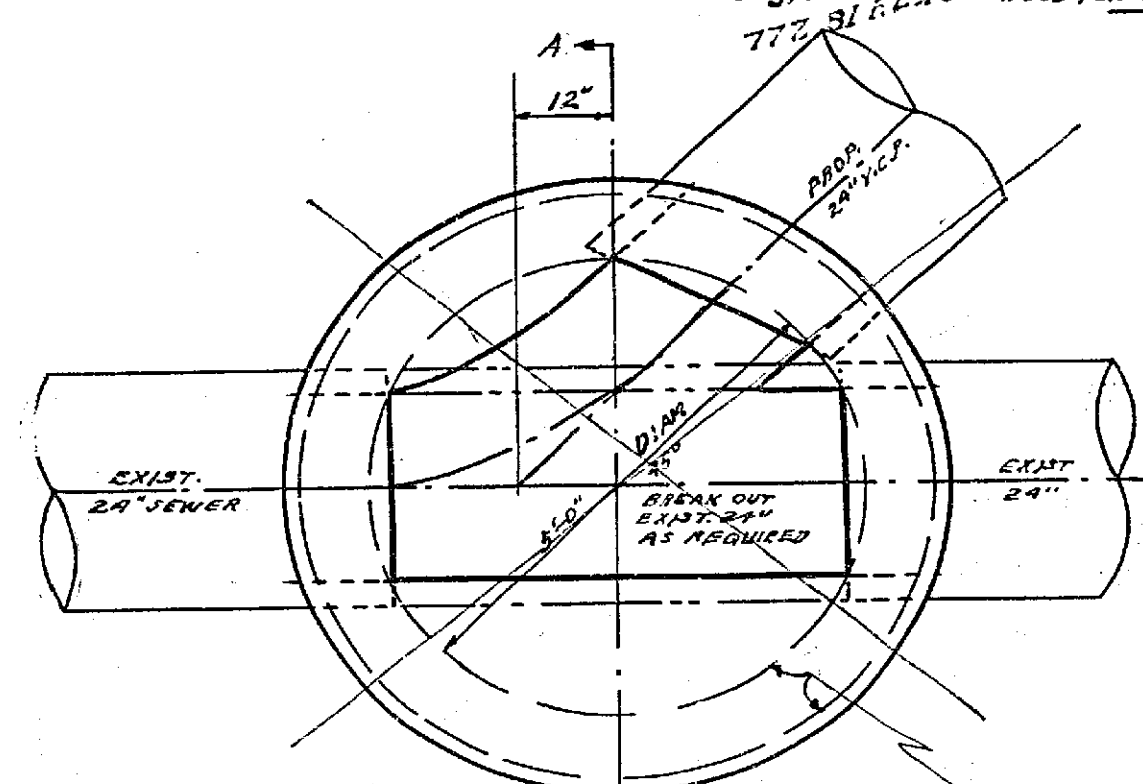
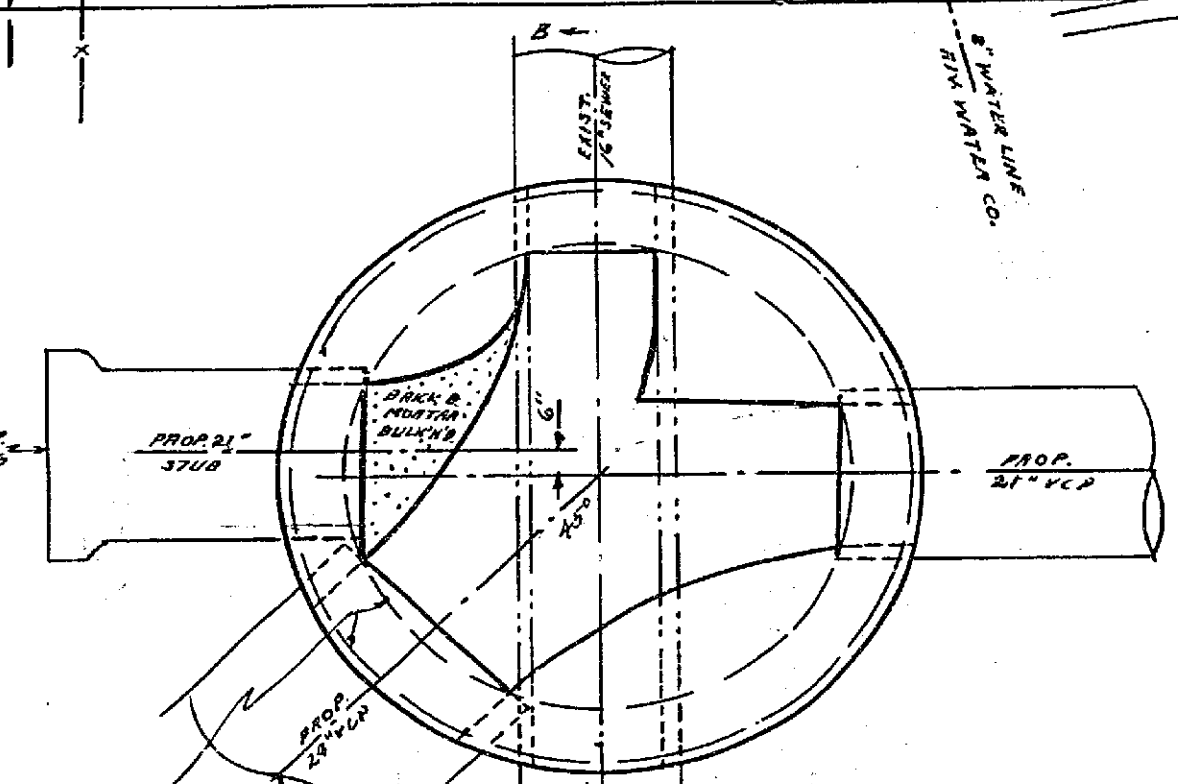


PLAN
1" = 50'



PLAN AT TOP OF CONCRETE
1" = 2'
DETAIL
M.H. AT 0+15

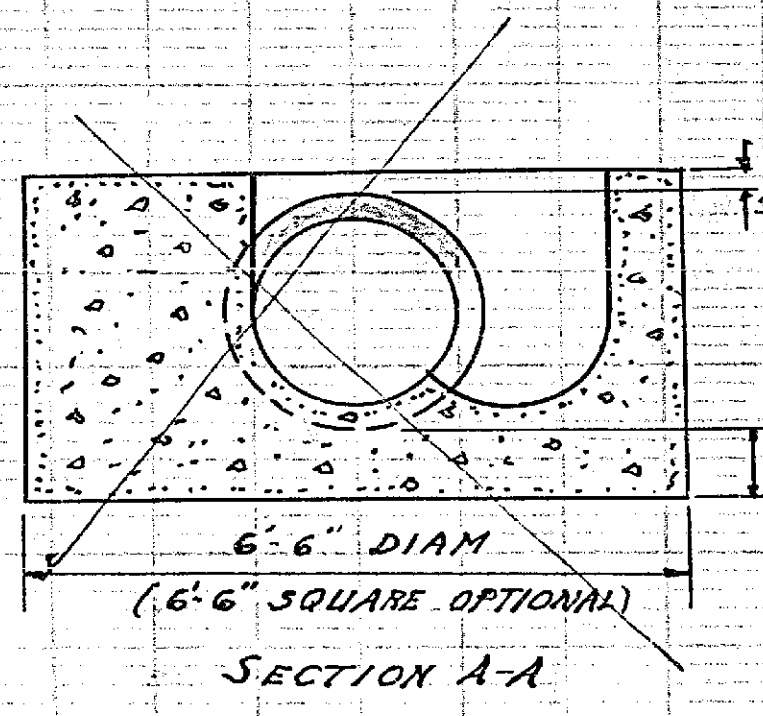


PLAN AT TOP OF CONCRETE
1" = 2'
DETAIL
M.H. AT 0+00

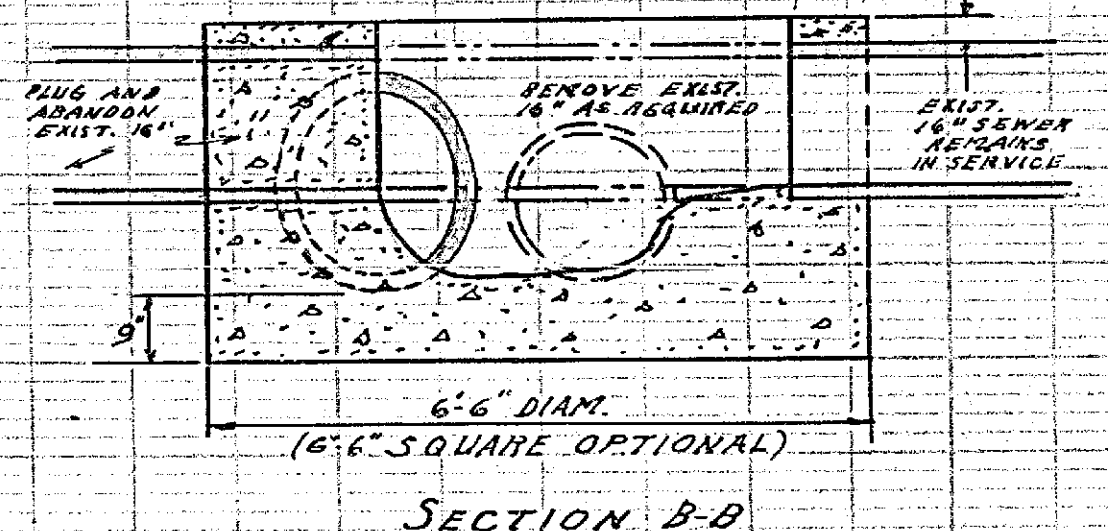
BASE OF 8" BRICK MANHOLE BARREL
5'-0" I.D. AT BASE TAPERING TO
2'-0" I.D. AT TOP WITH STANDARD
MANHOLE FRAME AND COVER STD 130
INCLUDE M.H. STEPS - SEE STD. M.H.D.

B.M. 785.61
R.R. SPIKE IN POLE # 124139 J
N.E. CORNER PINE & TEQUESQUITE

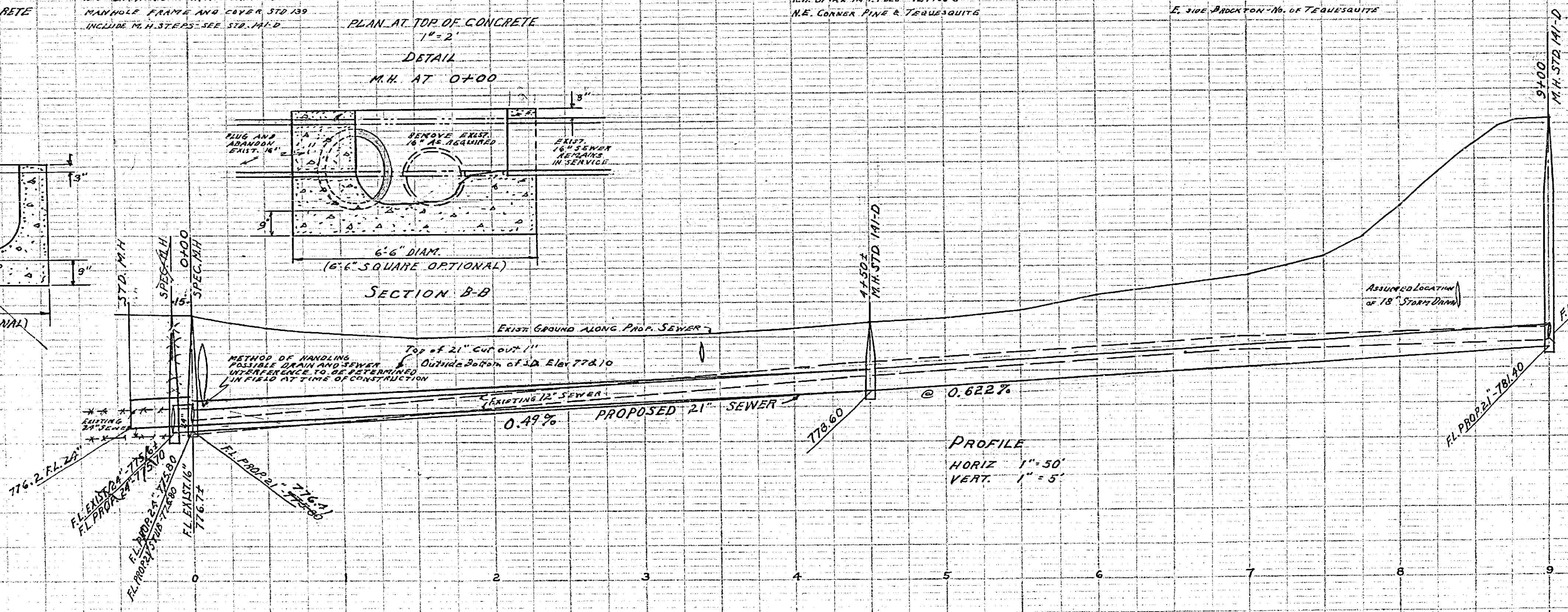
B.M. 796.91
R.R. SPIKE IN POLE # 8966 J
E. SIDE BROCKTON - W. OF TEQUESQUITE



SECTION A-A
6.6" DIAM.
(6.6" SQUARE OPTIONAL)



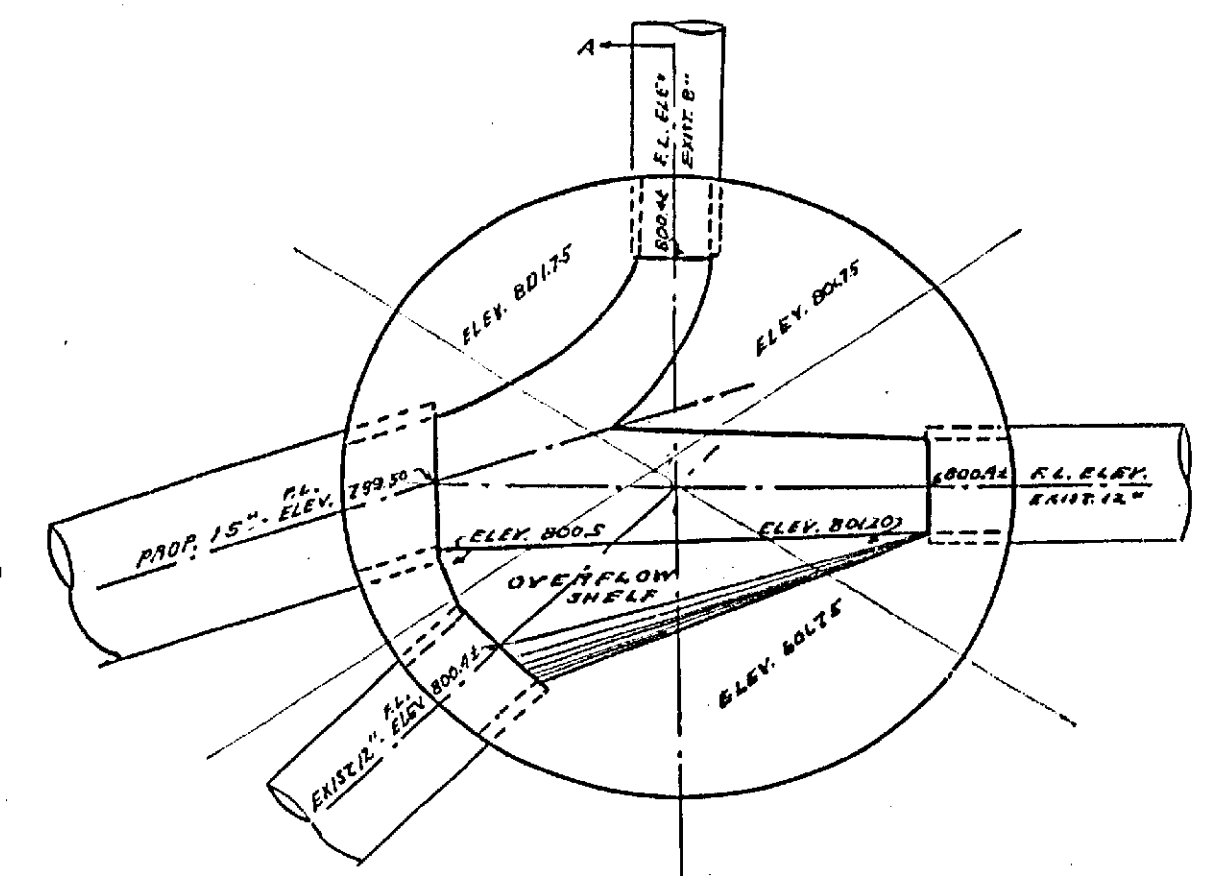
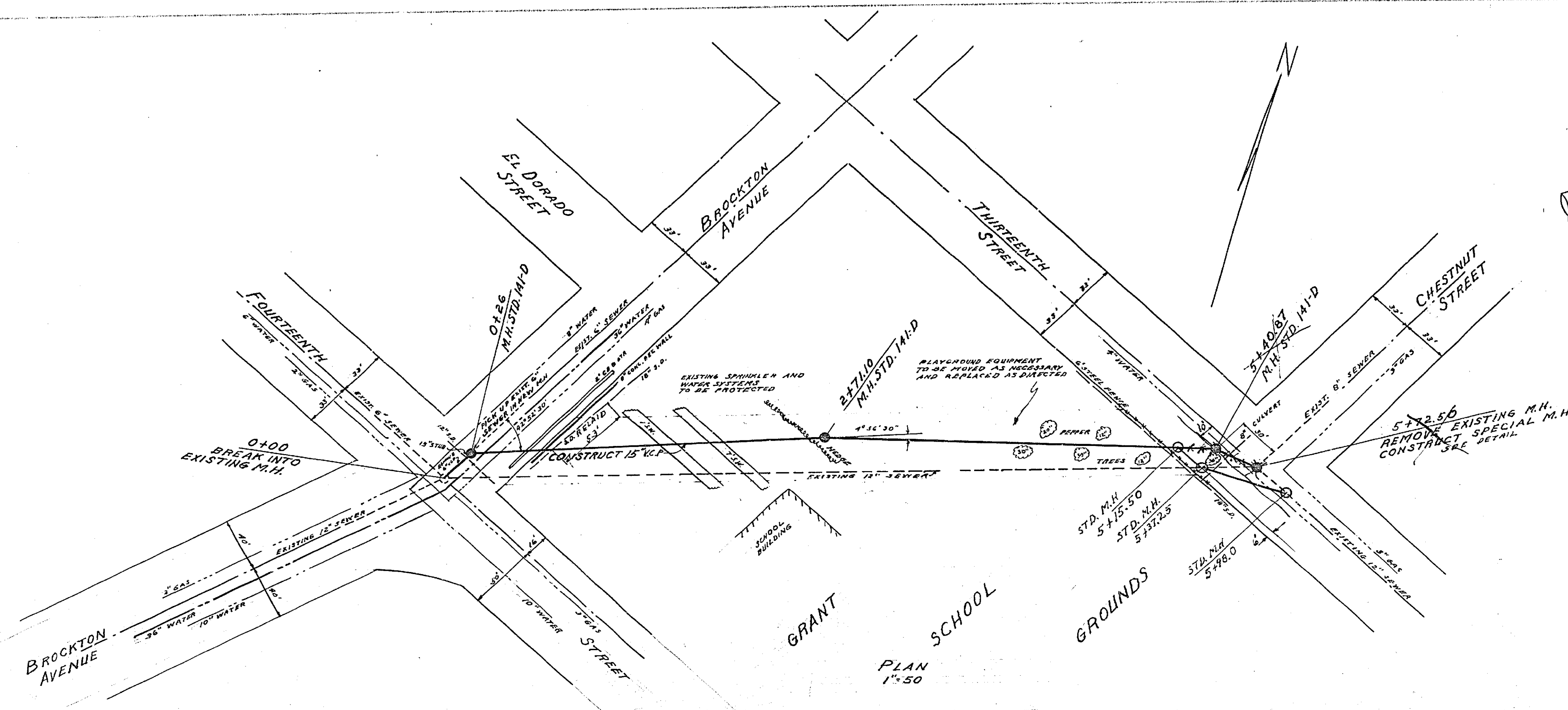
SECTION B-B
6.6" DIAM.
(6.6" SQUARE OPTIONAL)



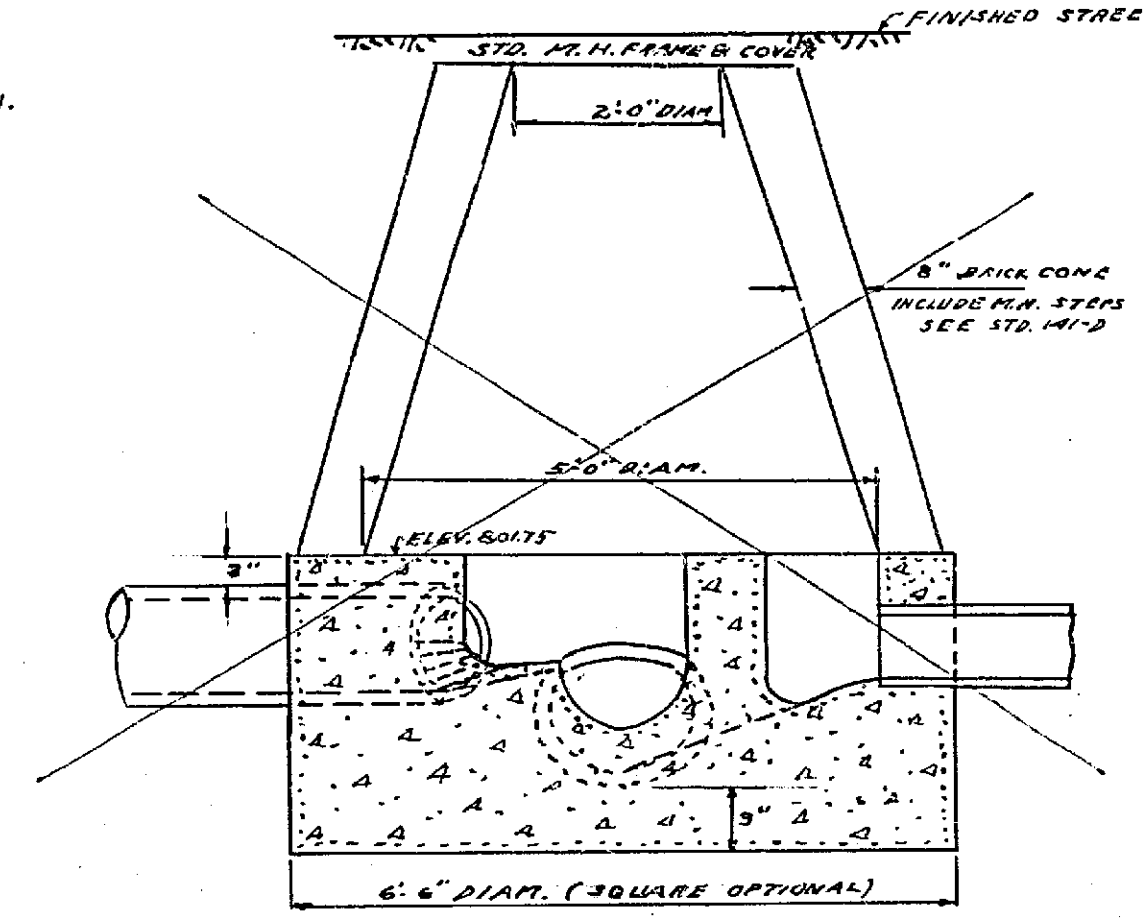
PROFILE
HORIZ 1" = 50'
VERT. 1" = 5'

REVISIONS			CITY OF RIVERSIDE, CALIFORNIA DEPARTMENT OF PUBLIC WORKS
MARK	DATE	DESCRIPTION	
RED	12-2-55	AS BUILT - FB. 5-8-19	BROCKTON AVENUE RELIEF SEWERS TEQUESQUITE AVENUE LINE
DESIGNED BY	ZE	CHECKED BY L.S.M.	
DRAWN BY	ZE	APPROVED BY	1544
RECOMMENDED BY	W.D. M. SELL	DATE 5-1-55	SHEET A OF 2

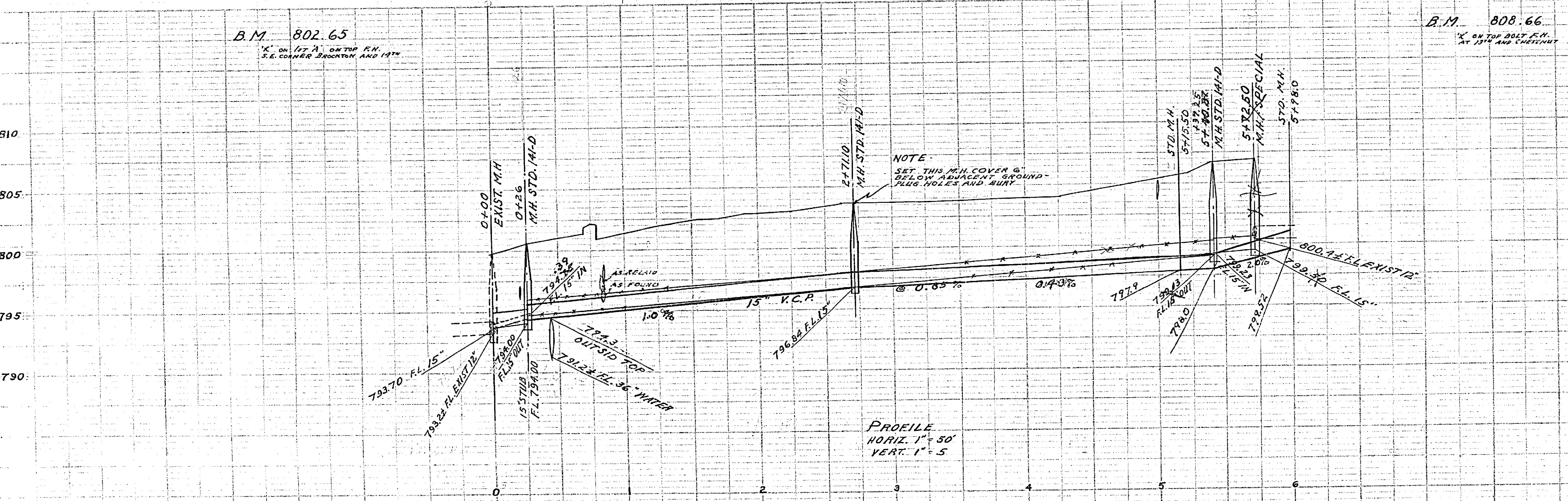
1544



PLAN AT TOP OF CONCRETE
DETAIL OF M.H. 5+72.50
1" = 2'



SECTION A-A



NOTE:
SET THIS M.H. COVER 6"
BELOW ADJACENT GROUND
PLUS HOLES AND BURY

PROFILE
HORIZ. 1" = 50'
VERT. 1" = 5'

REVISIONS			CITY OF RIVERSIDE, CALIFORNIA DEPARTMENT OF PUBLIC WORKS
MARK	DATE	DESCRIPTION	
RED	12-9-58	A'S BUILT - FB 503/19	BROCKTON AVENUE RELIEF SEWERS GRANT SCHOOL LINE
DESIGNED BY	DRAWN BY	CHECKED BY L.S.M.	
RECOMMENDED BY	APPROVED	1544	SHEET B OF 2

1544