

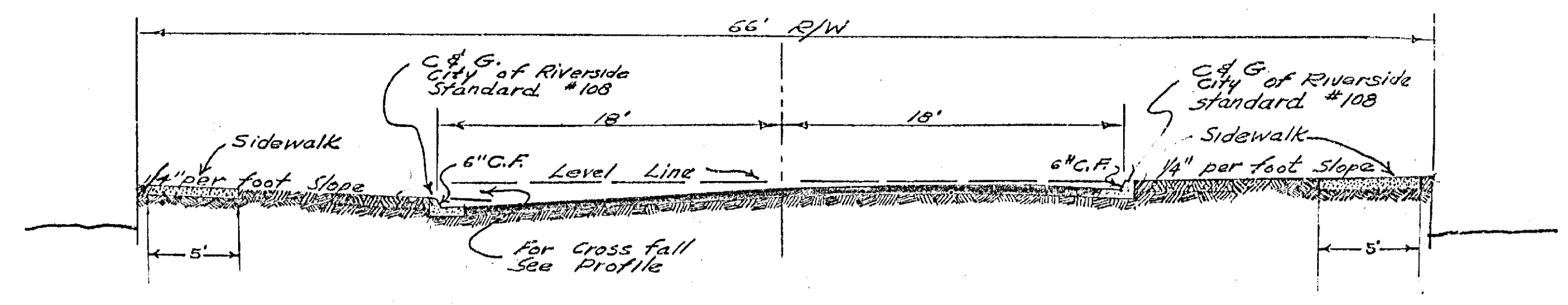
SHEET 1 of 2 SHEETS

BENCH MARK
B.M. - S&L 176 Curb of N Drive Magnolia Ave. 10' W.
of W. R. of Madison St. Elev. 814.16'

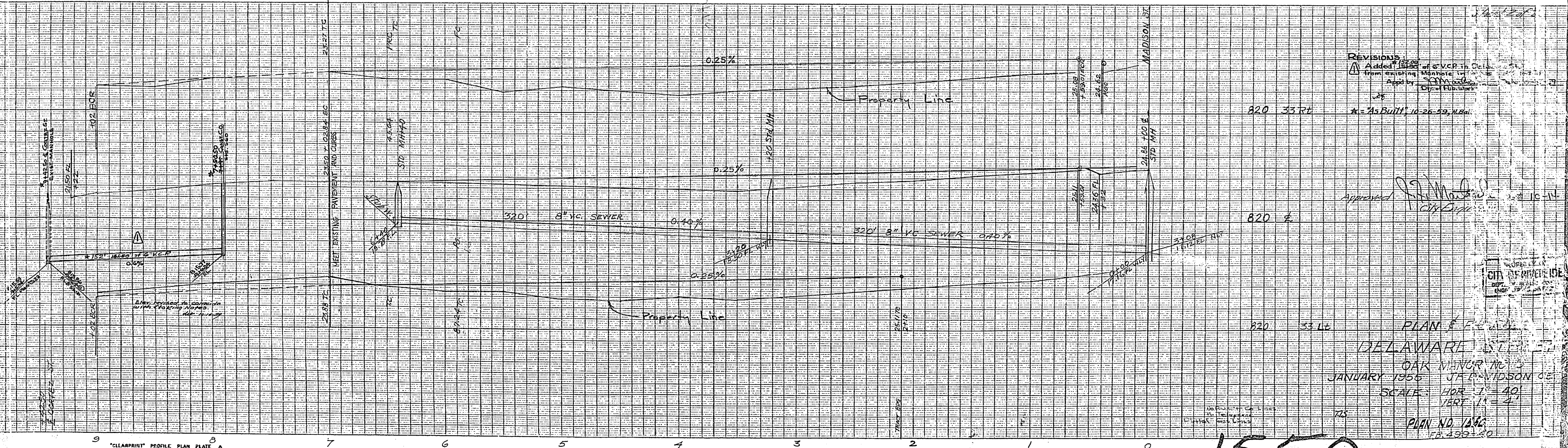
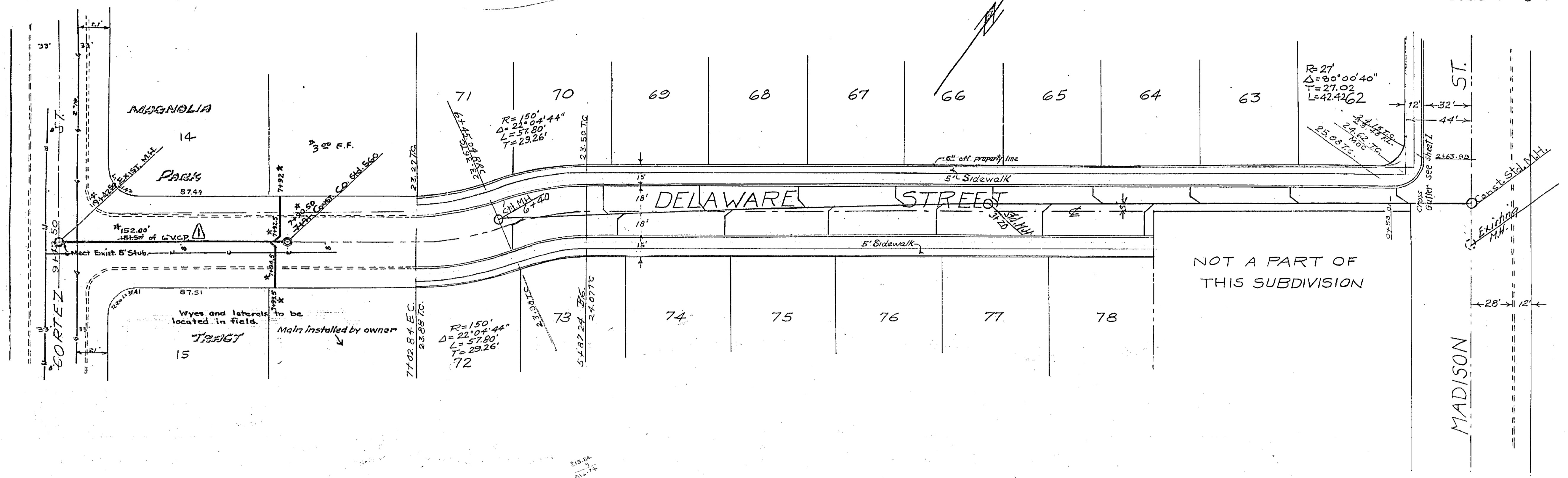
PLAN & PROFILE
MADISON STREET
OAK MANOR No. 5
September 1955 J.E. DAVIDSON C.E.
Scale Hor. 1"=40'
Vert. 1"=4'

Approved *J.F. Martineau* 10-14-1955
City Engineer

1550



TYPICAL ROAD SECTION
Scale: 1" = 6'-0"



REVISIONS:
 Added 1/2" of V.C.P. in...
 from existing Manhole in...
 Apply by...
 City of Riverside
 *As Built 10-26-59, H.B.

Approved: J.P. [Signature]
 City Engineer

PROPERTY OF
 CITY OF RIVERSIDE
 DEPT. OF PUBLIC WORKS
 ENGINEERING DIV. 22

PLAN NO. 1466
 DELAWARE STREET
 OAK MANOR NO. 3
 JANUARY 1956 J.P. DAVIDSON
 SCALE: HOR. 1" = 40'
 VERT. 1" = 4'

1550