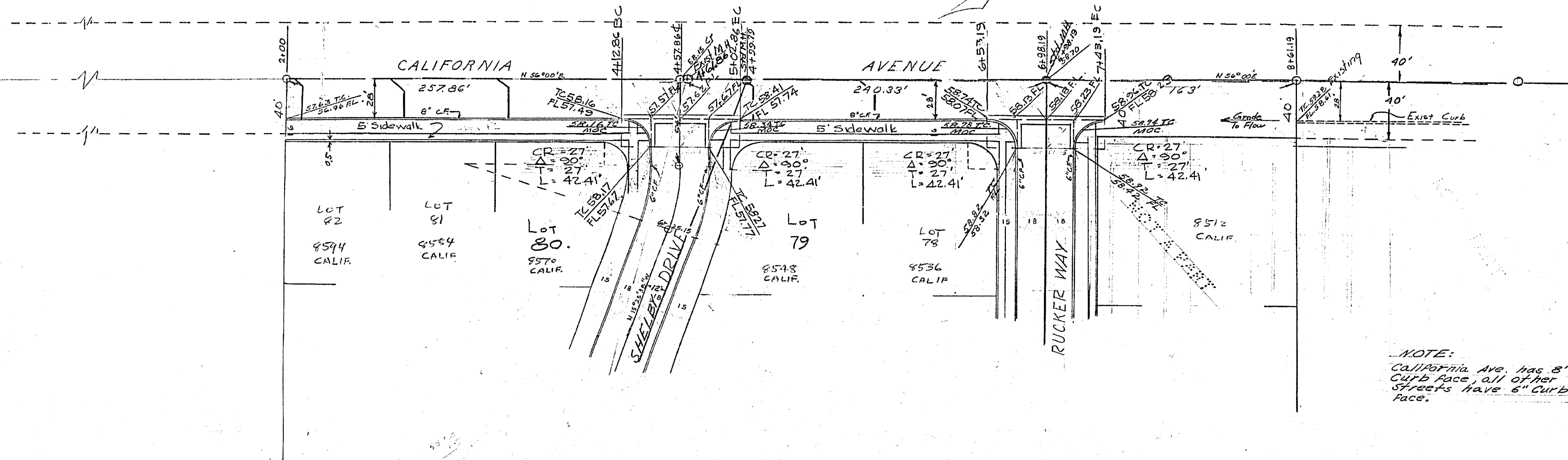
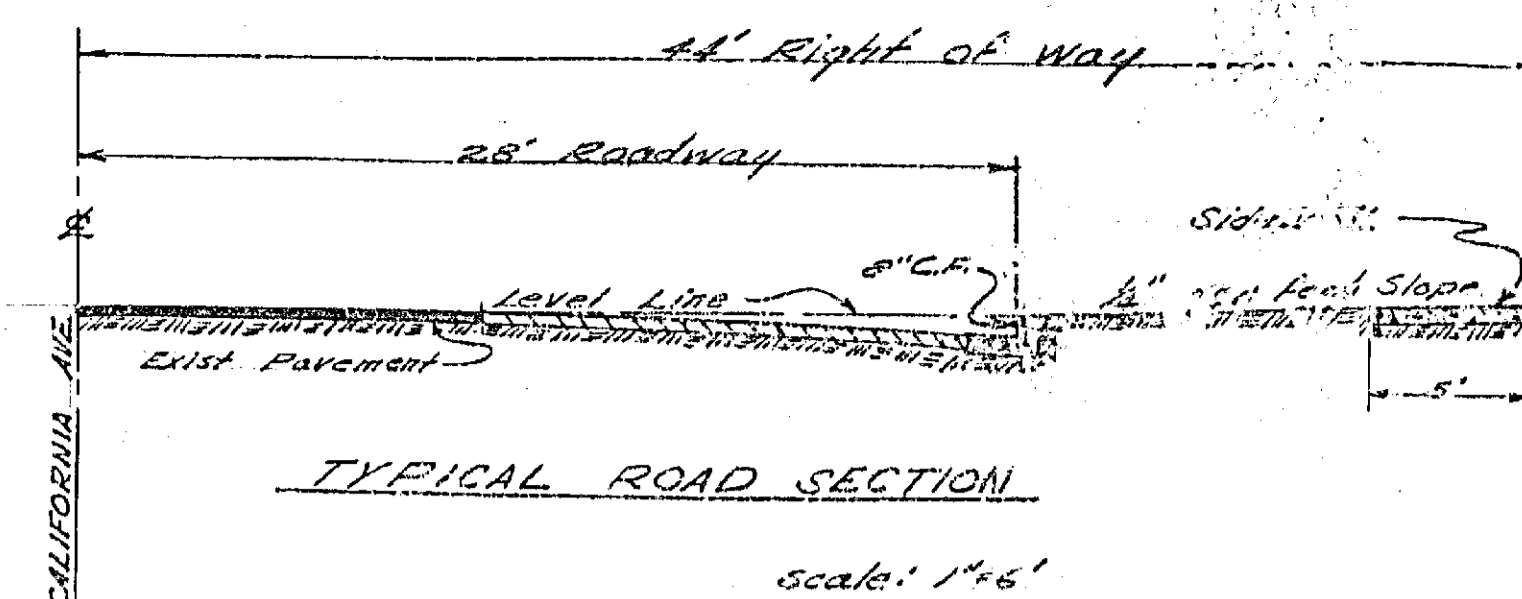
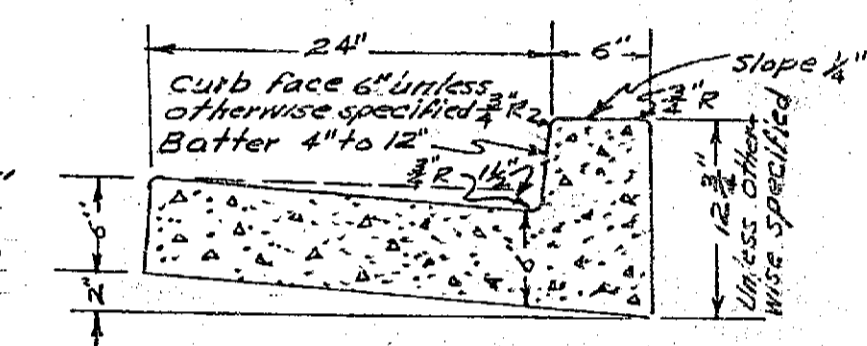


NOTE:

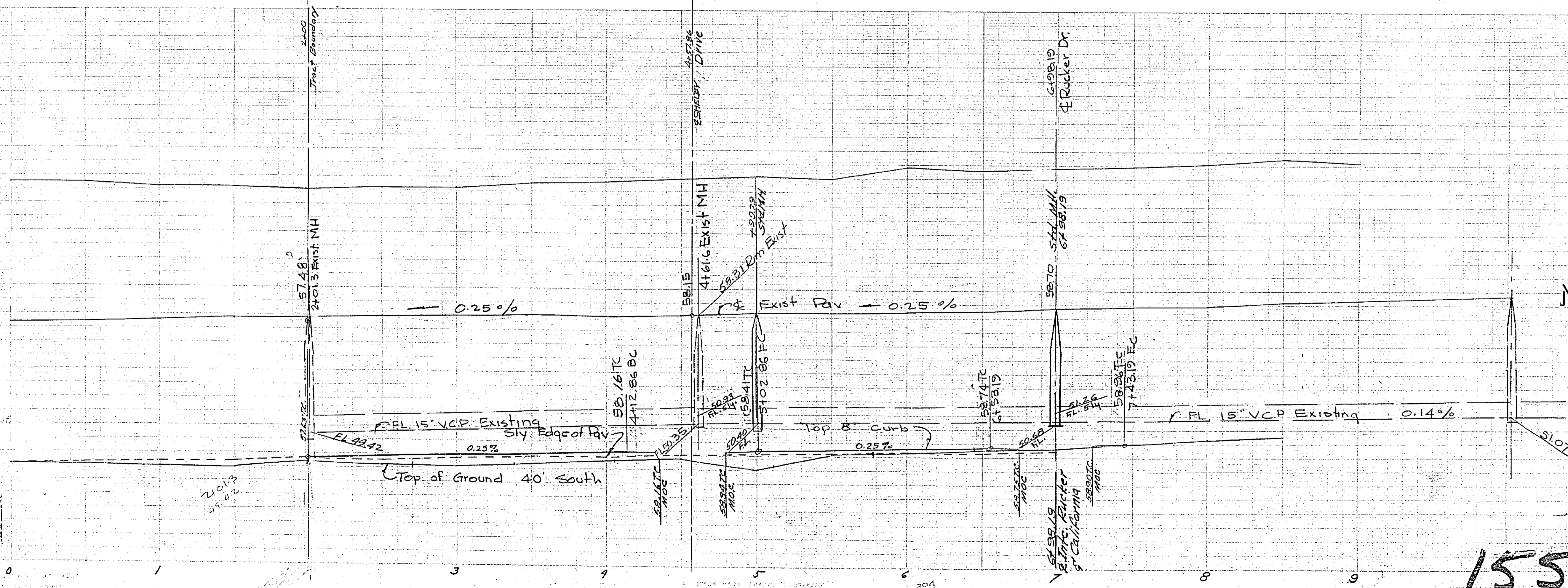
C.F.G. between station 6+25.15 on
Shelby Drive and station 5+02.86 on California
Ave. shall not be constructed until three weeks
have elapsed since the sewer trench has been
backfilled and flooded.



NOTE:
California Ave. has 8" curb face, all of her streets have 6" curb face.



- BENCH MARK
- City B.M. - Cross on Button Top of Ara P. SW. Cor California & Adams Elev. 766.14
 - T.B.M. #1 - Chiseled in Curb, Sly side California Ave. in Front of House # 8512. Elev. 758.96
 - T.B.M. #2 - Chiseled on Rim. M.W.D. M.H. Nly side California Elev. 759.02
 - T.B.M. #3 - Top 1 1/2" I.P. Sly Cor. this Subd. Elev. 759.71



PLAN & PROFILE
CALIFORNIA AVENUE

MELODY LANE GARDENS
JULY 1955 J.F. DAVIDSON C.E.

SCALE: HORIZ. 1"=40'
VERT. 1"=4'

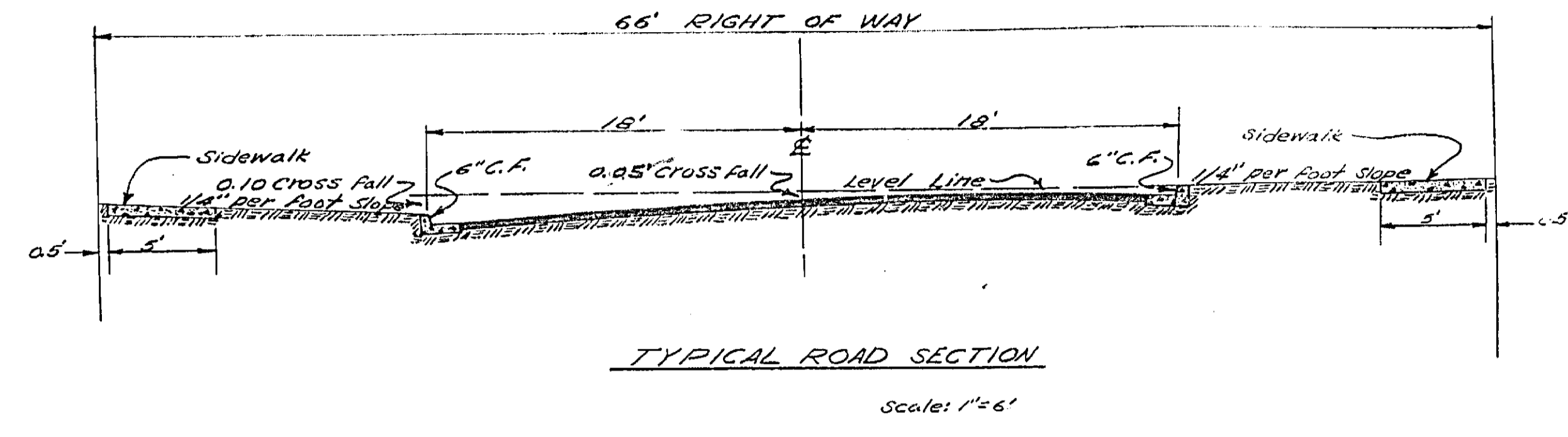
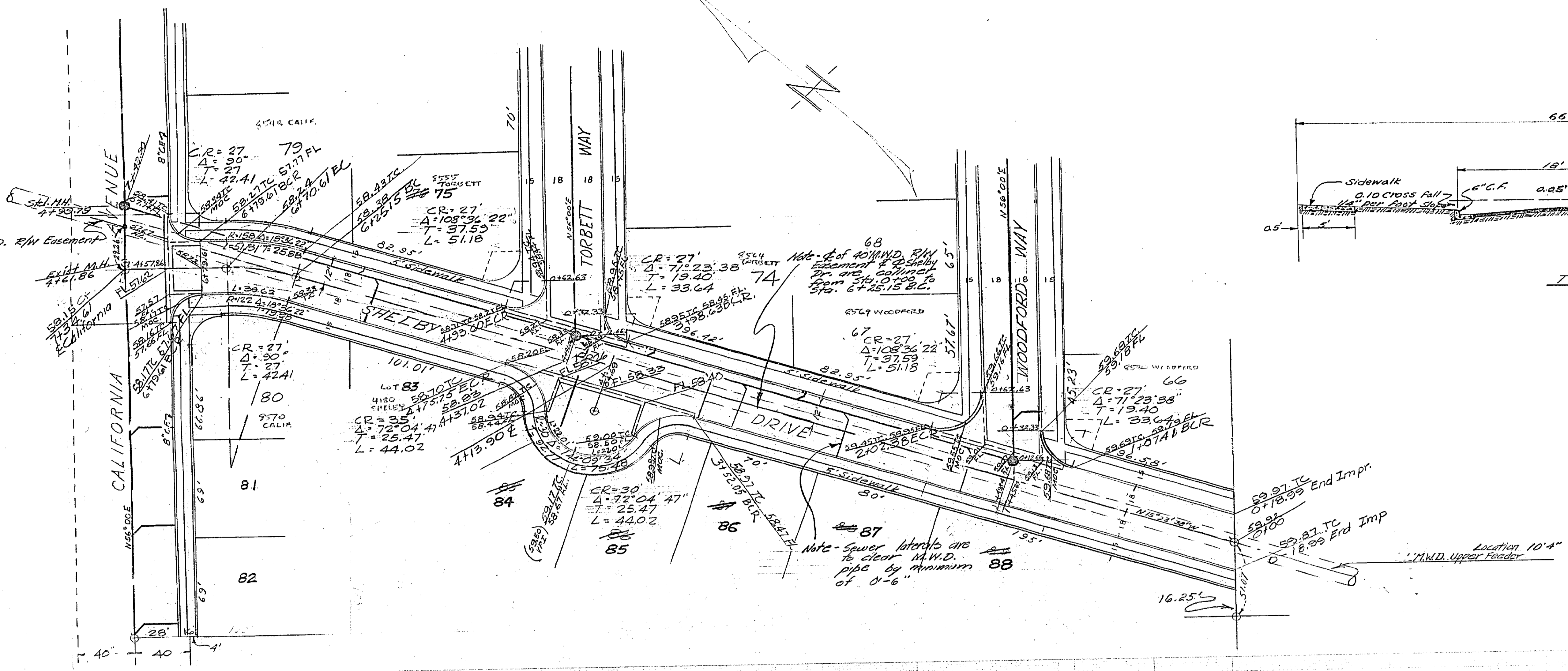
Revised & Submitted Oct 7, 1955

Approved *J. F. Davidson*
City Engineer

Revised & Submitted Dec 2, 1955

Approved *J. F. Davidson*
City Engineer

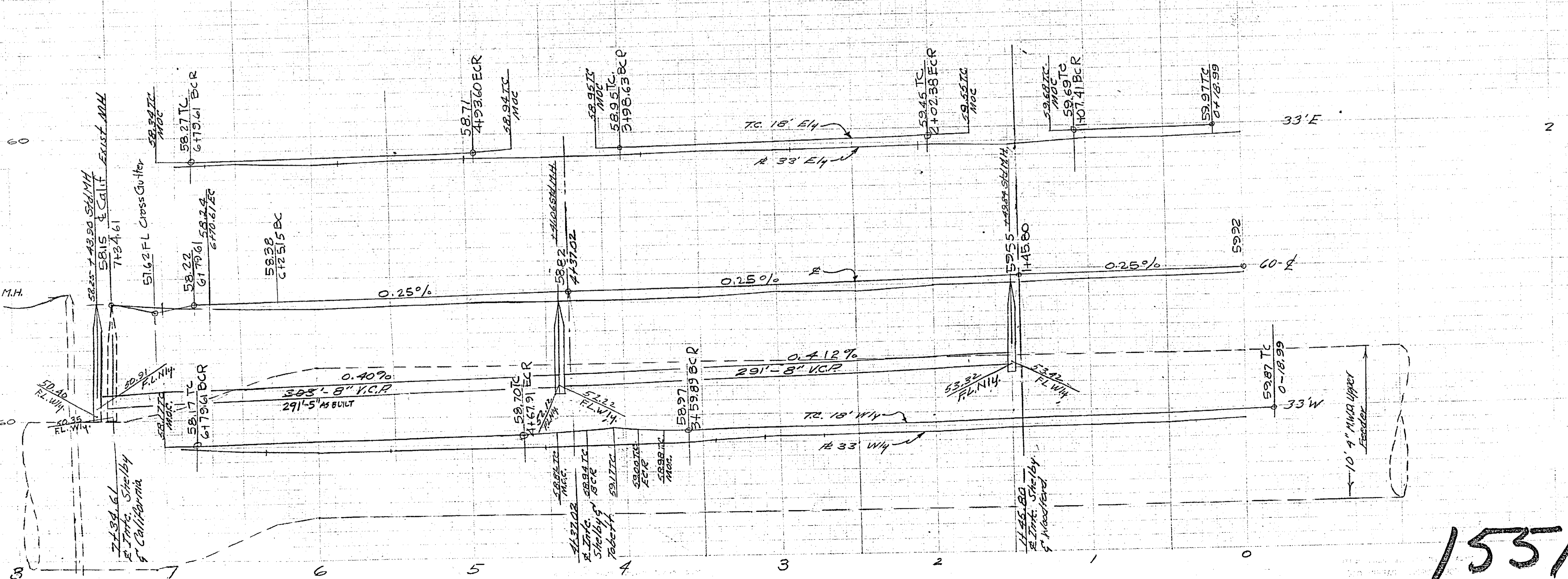
1551



NOTE:

C.G. between station 6+25.15 on Shelby Drive and station 5+02.86 on California Ave. shall not be constructed until three weeks have elapsed since the sewer trench has been backfilled and flooded.

BENCH MARK
City B.M. - Cross on button top of Pipe H, S.M.
Cor. California & Adams. Elev. 766.2'
T.B.M. - 1/2" Chiseled in Curb, SW Side California
in front of house #5512 Elev. 758.1'



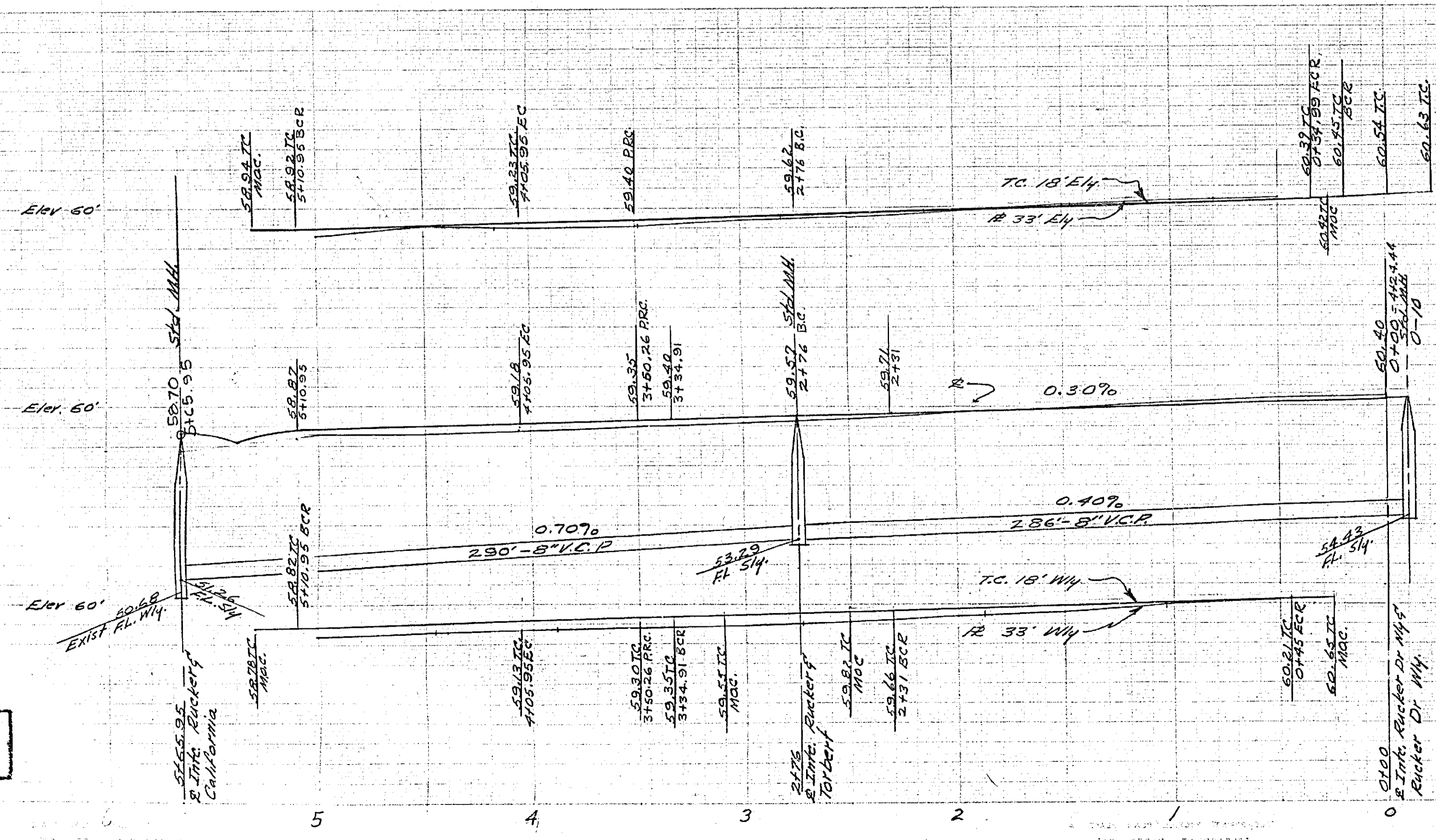
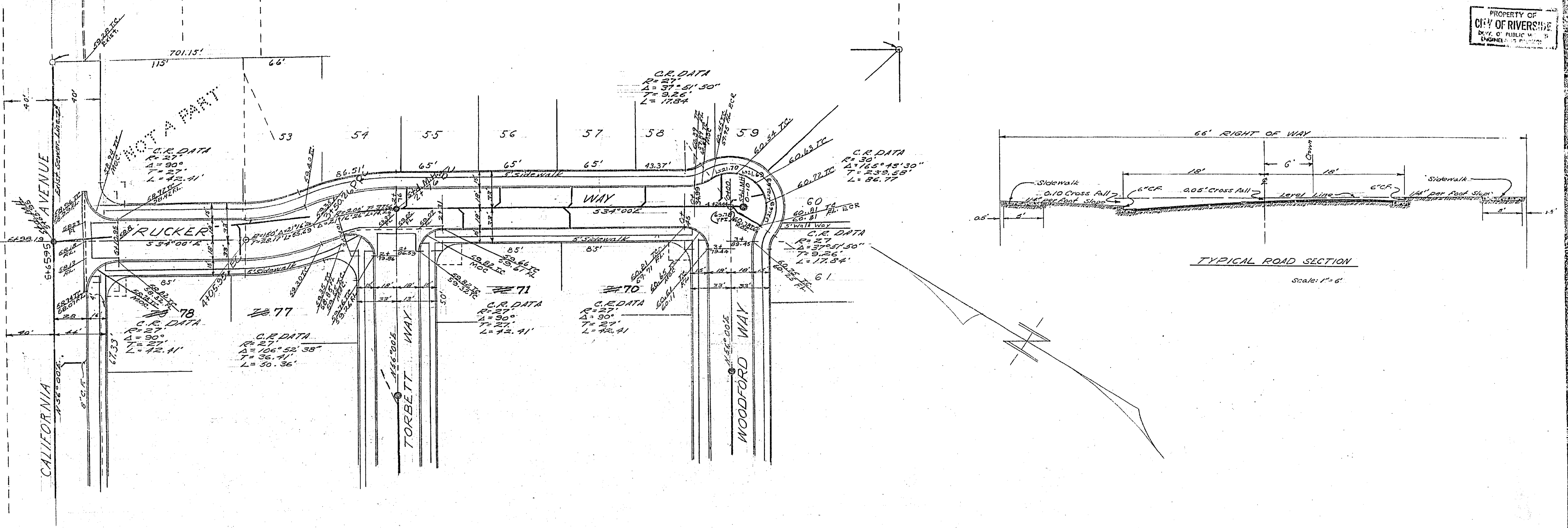
PLAN & PROFILE
"SHELBY DRIVE"
MELODY LANE GARDEN

J. F. DAVIDSON C.E.
SCALE: HORIZ. 1"=40'
VERT. 1"=4'

Revised & Submitted Oct. 7, 1955
Approved *J. F. Davidson* City Engineer 10-14-55

Revised & Submitted Dec. 2, 1955
Approved *J. F. Davidson* City Engineer

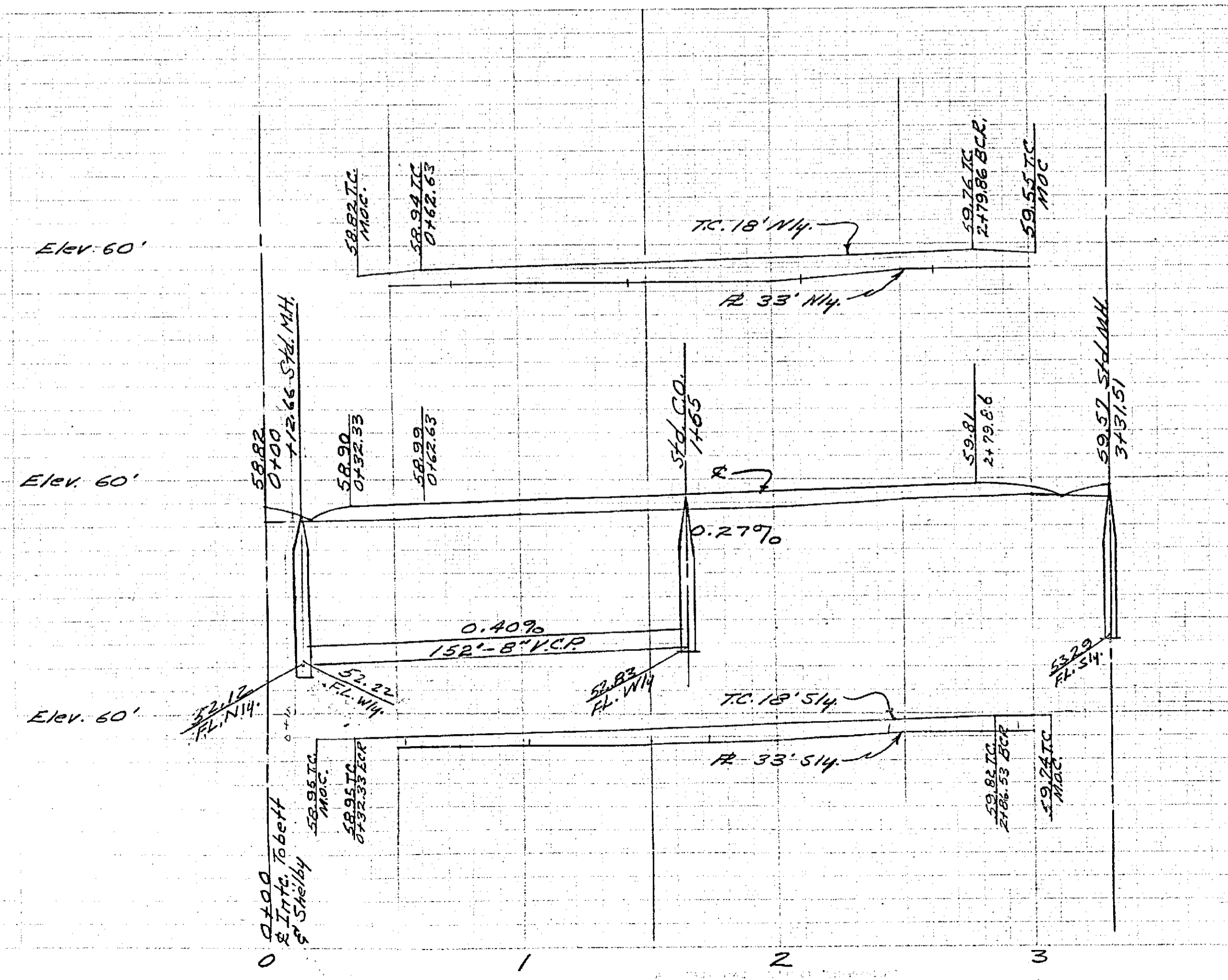
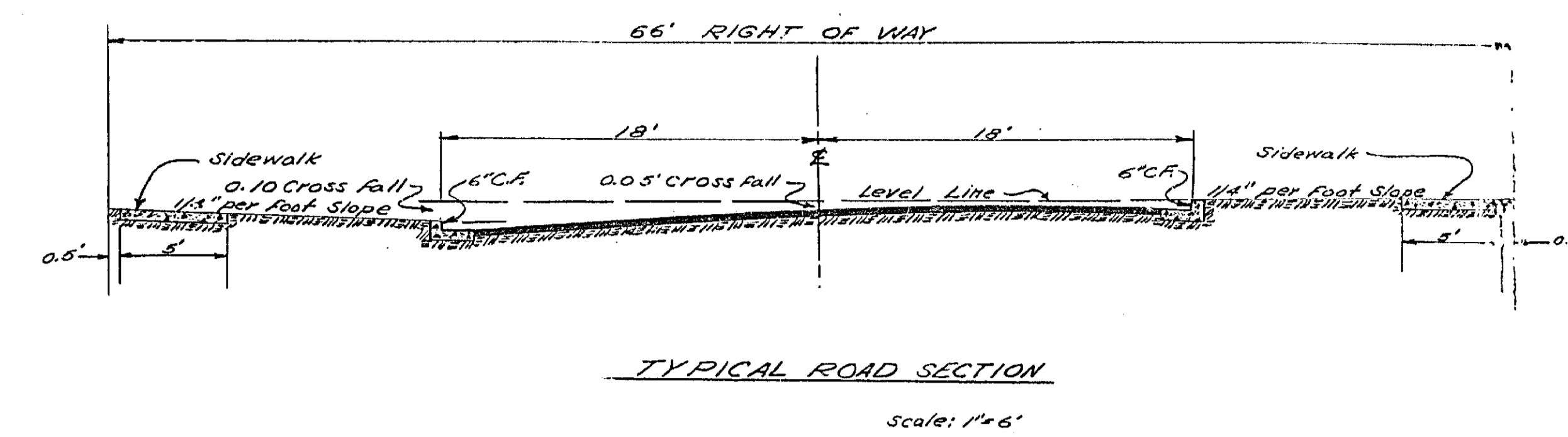
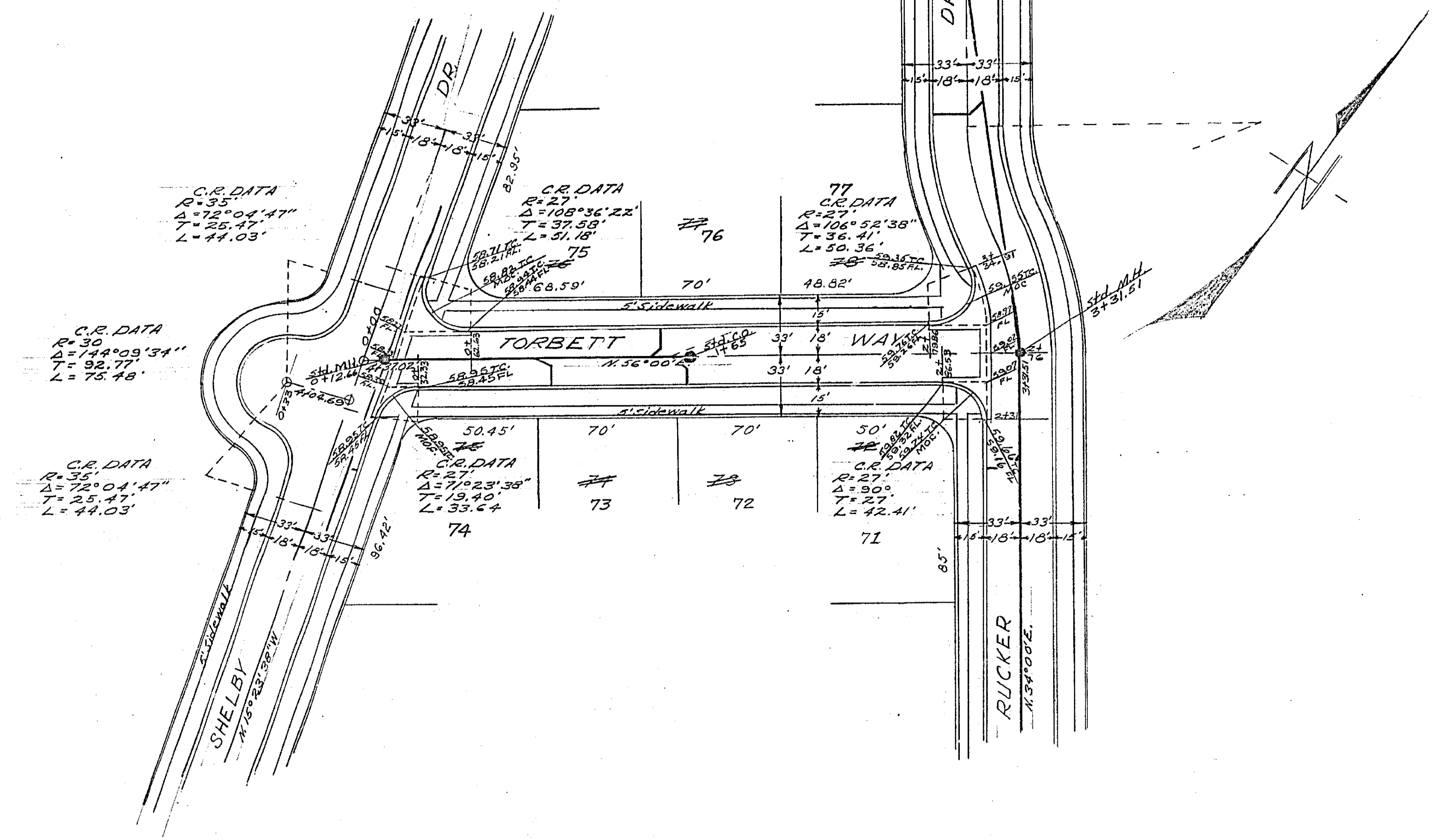
1531



PLAN & PROFILE
"RUCKER WAY"
MELODY LANE GARDENS
#3
JULY 1955 J.F. DAVIDSON C.E.
SCALE: HORIZ. 1" = 40'
VERT. 1" = 4'

Revised & Submitted Oct 7, 1955
Revision: Lot No's corrected Oct. 7, 1957 H.B.
Approved *J.F. Davidson* City Engineer
Approved *J.F. Davidson* City Engineer

1551



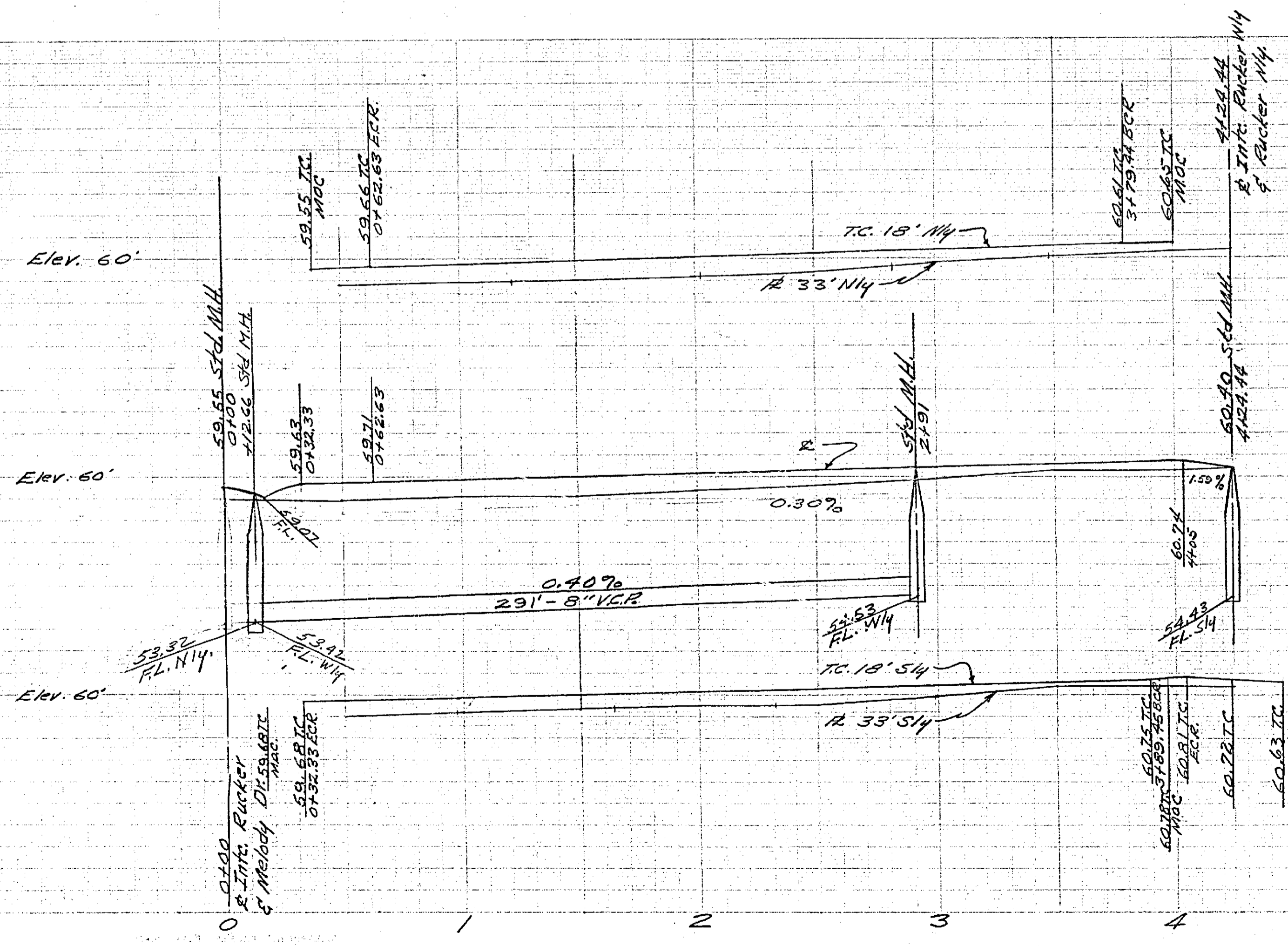
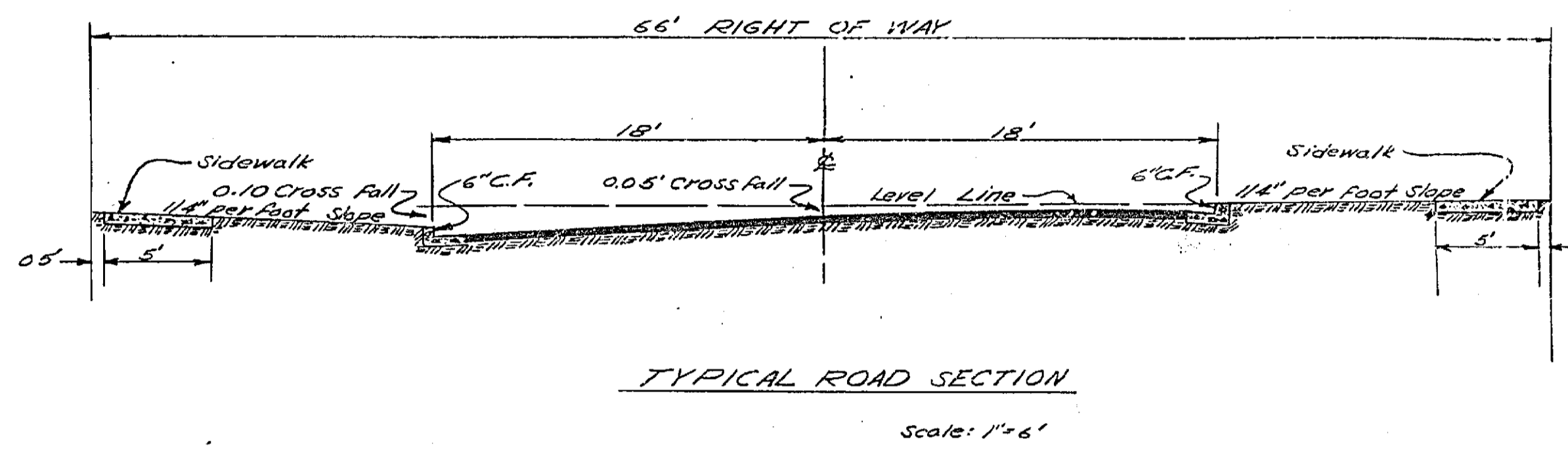
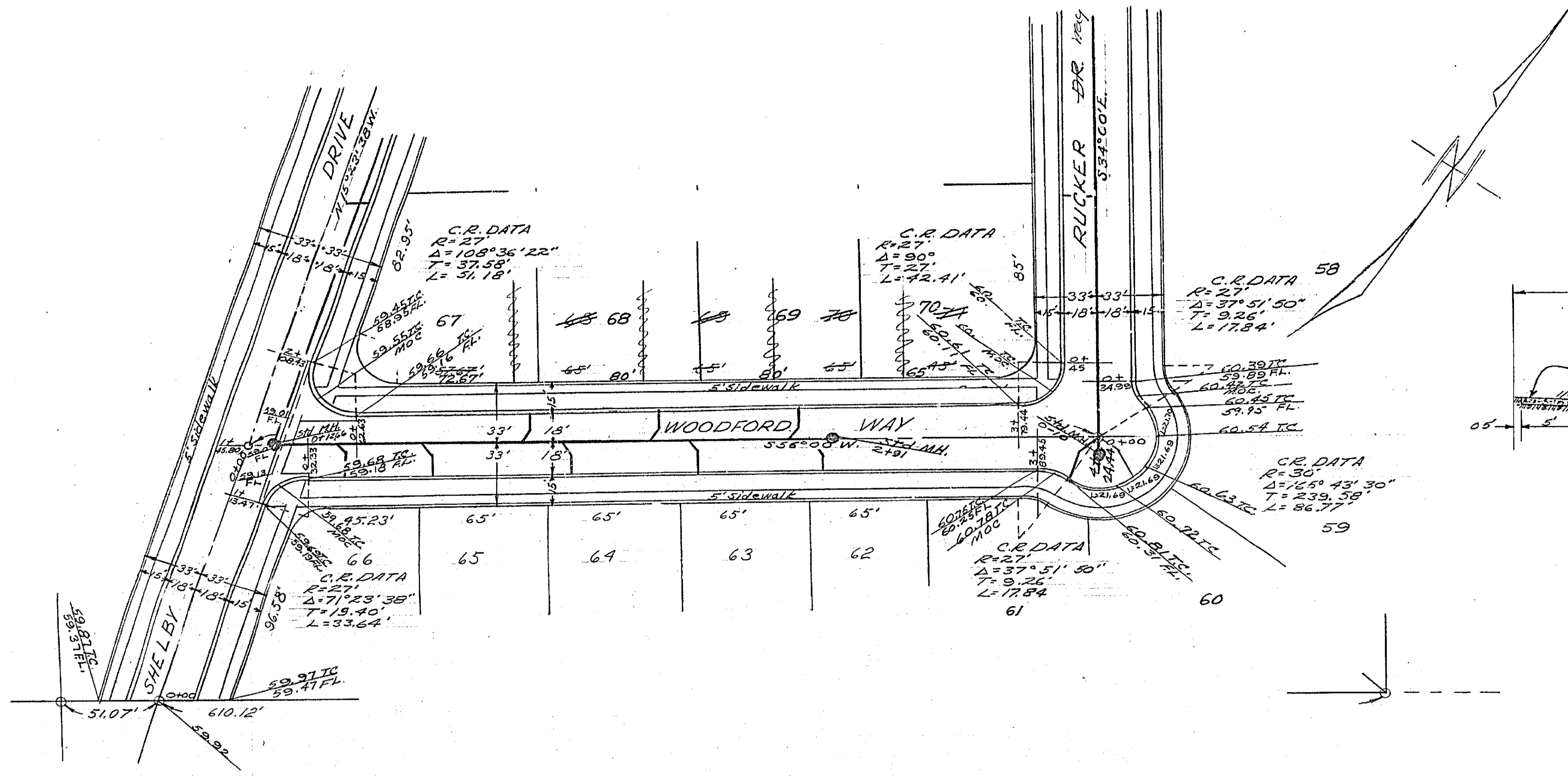
BENCH MARK
City B.M. - Cross on but-ton top of Apr 1, S.W.
Cor. Cal. Form 4 Adams. Elev. 764.21'

PLAN & PROFILE
TORBETT WAY

MELODY LANE GARDE
JULY 1955 J.F. DAVIDSON C.E.
SCALE: HORIZ. 1"=40'
VERT. 1"=4'

Revised & Submitted Dec. 2, 1955
Revised & Submitted Oct. 7, 1955
Approved J.F. Davidson City Engineer
Approved J.F. Martine City Engineer 10-11-55

1551



BENCH MARK City B.M. - Cross on Button, top of 4.5" California 8" Adams. Elev. 56.21

PLAN & PROFILE 'WOODFORD WAY' MELODY LANE GARDEN #3

JULY 1955 J.E. DAVIDSON SCALE: HORIZ. 1"=40'

VERT. 1"=4' Revised & Submitted Oct. 7, 1955

Approved J. J. Martini City Engineer

REVISION: LOTS 67 thru 70 AS PER PLAT. 10-7-57 H.B.

1551