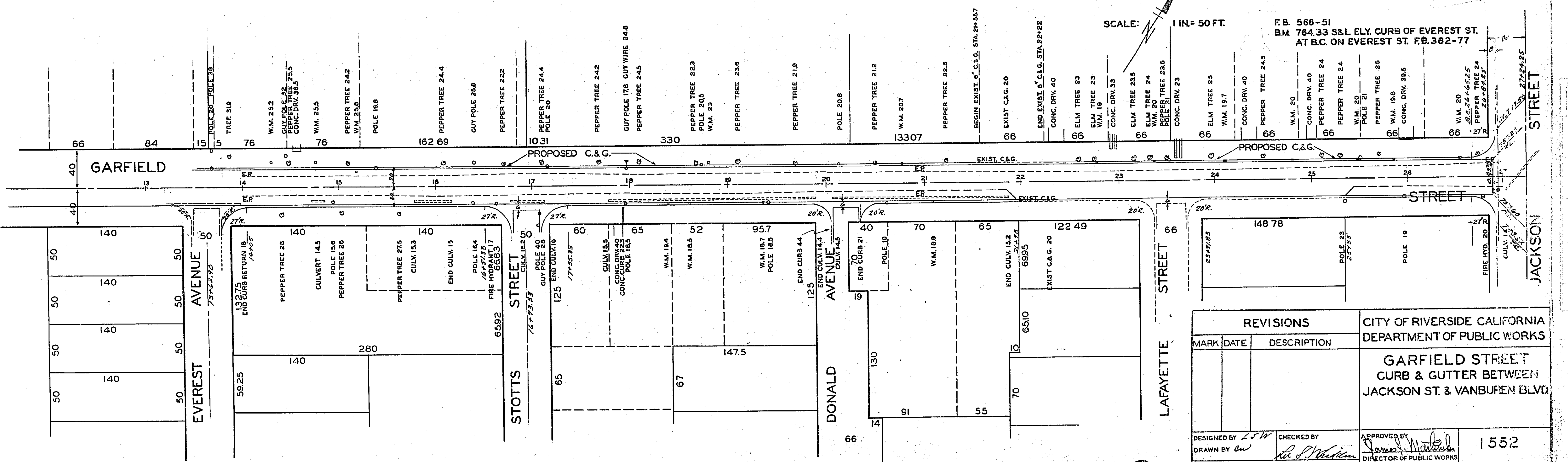
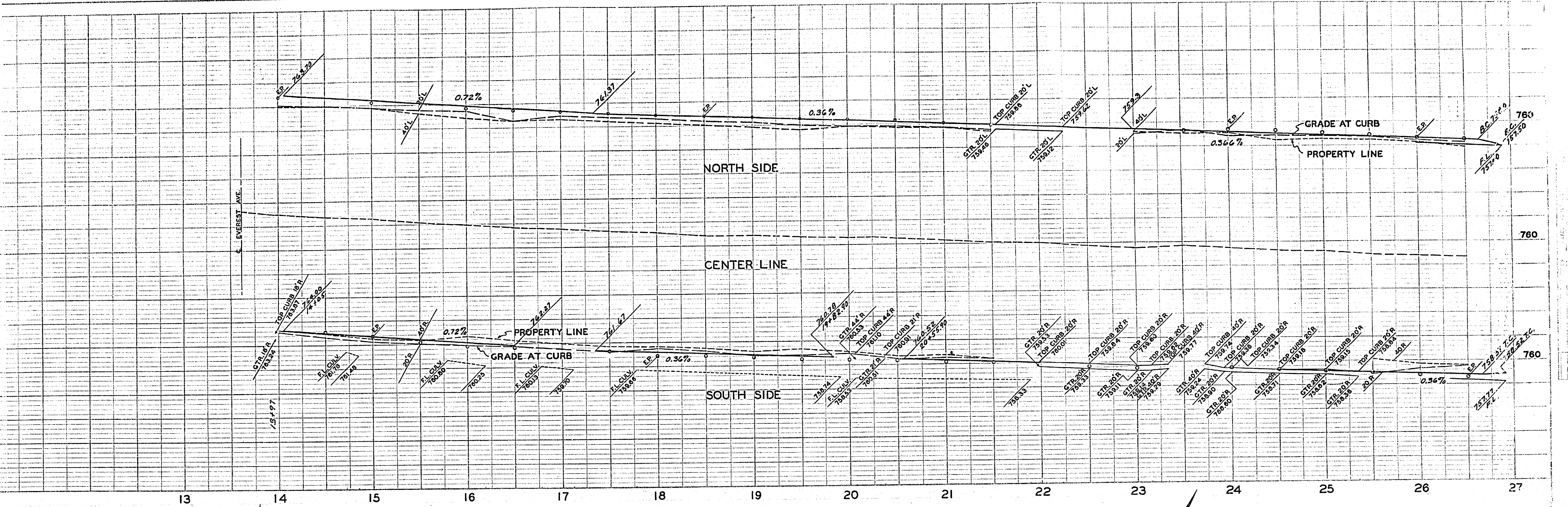


| REVISIONS   |      | CITY OF RIVERSIDE CALIFORNIA<br>DEPARTMENT OF PUBLIC WORKS |                          |
|---|------|--|--------------------------|
| MARK  | DATE | DESCRIPTION  |                          |
|   |      |  |                          |
| <b>GARFIELD STREET<br/>CURB &amp; GUTTER BETWEEN<br/>JACKSON ST. &amp; VANBUREN BLVD.</b> |      |  |                          |
| DESIGNED BY   | LSW  | CHECKED BY   | APPROVED BY              |
| DRAWN BY  | DEB  | <i>Lu S. Whitman</i>                                       | <i>Demo J. McArthur</i>  |
| RECOMMENDED BY  |      | ASSISTANT CITY ENGINEER                                    | DIRECTOR OF PUBLIC WORKS |
|   |      | DATE Nov 23, 1955  | SHEET 2 of 2             |

1552



| REVISIONS          |      |                | CITY OF RIVERSIDE CALIFORNIA<br>DEPARTMENT OF PUBLIC WORKS                                |
|--------------------|------|----------------|---|
| MARK               | DATE | DESCRIPTION    |   |
|                    |      |                | <b>GARFIELD STREET<br/>CURB &amp; GUTTER BETWEEN<br/>JACKSON ST. &amp; VANBUREN BLVD.</b> |
| DESIGNED BY        | LSW  | CHECKED BY     |   |
| DRAWN BY           | EW   | RECOMMENDED BY | ASSISTANT CITY ENGINEER   |
| DATE Nov. 23, 1955 |      |                | 1552<br>SHEET 1 OF 2  |

1552