

AVENUE

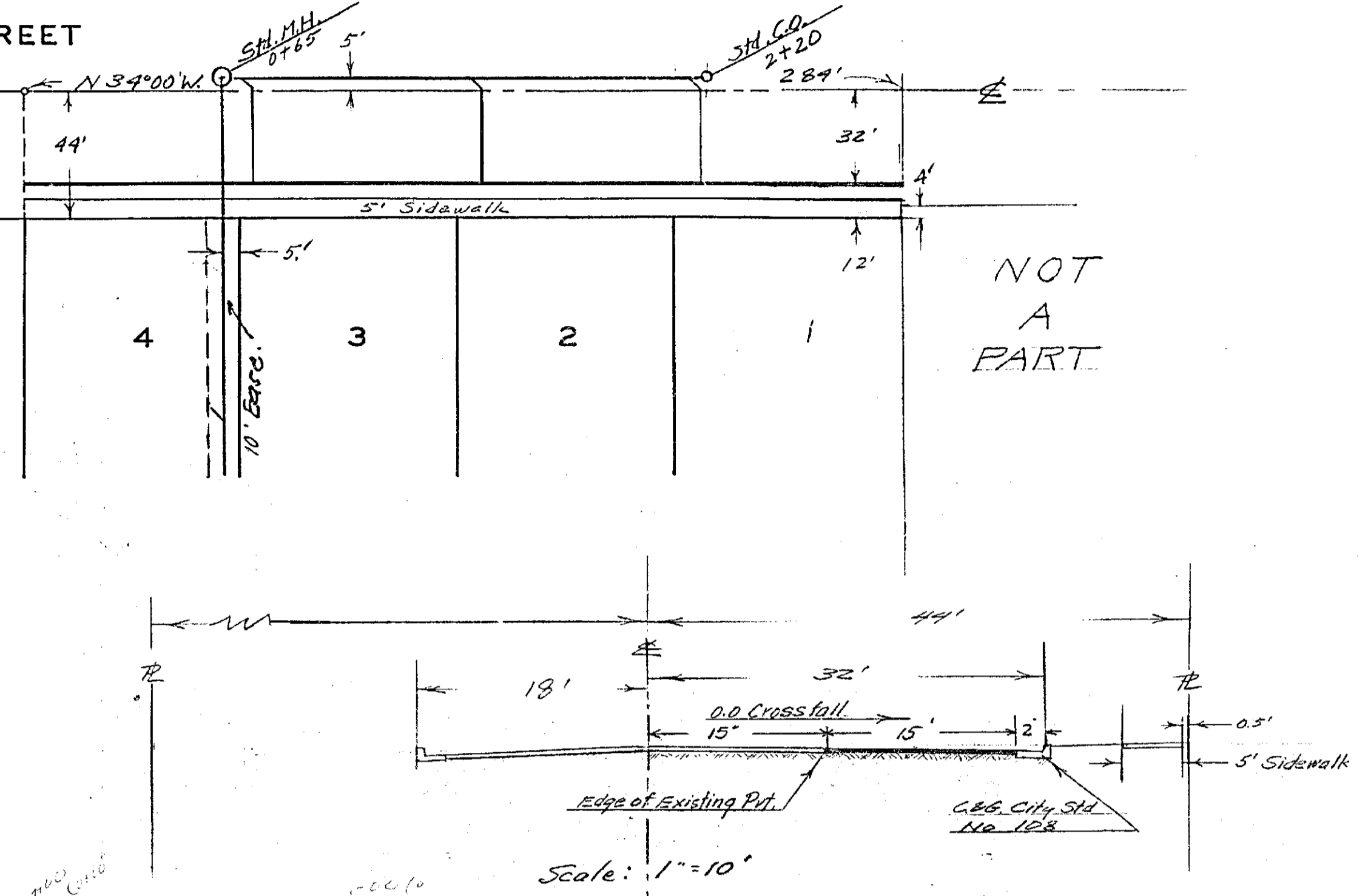
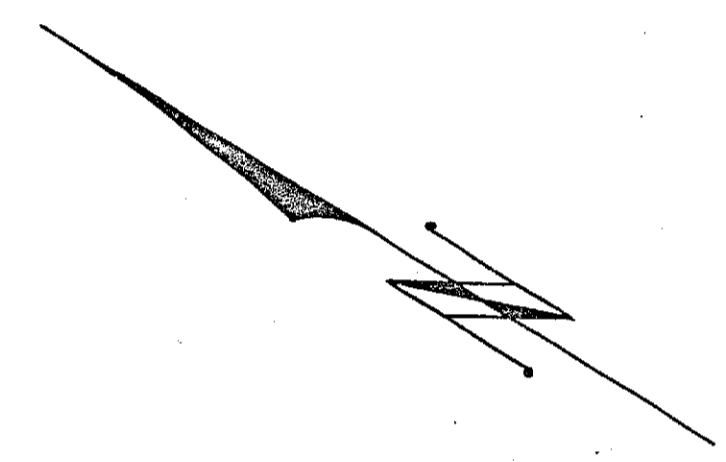
CALIFORNIA

ADAMS

STREET

THIS LINE NOT BUILT

NOT  
A  
PART



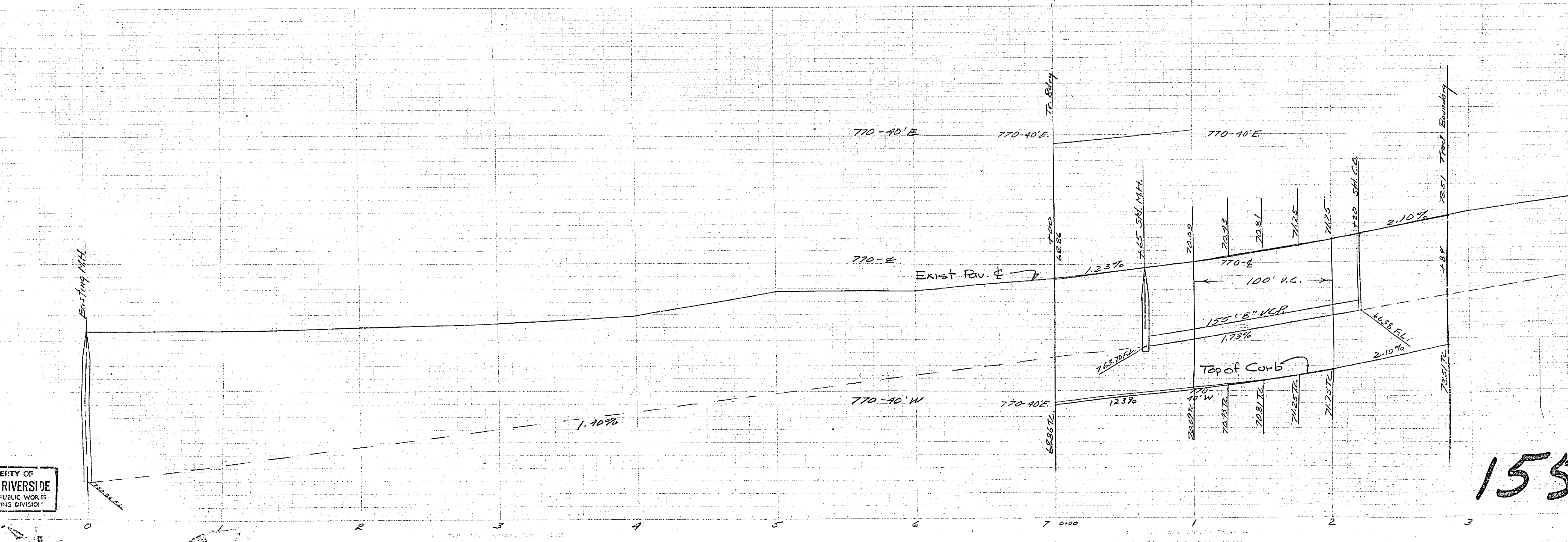
B.M.: Cross on button to F.H. SW Corner  
California & Adams - 766.21

Approved: J.F. Martinek Nov. 5,  
City Engineer  
By: S.L. W. [Signature] Office Exp. RE.

Plan & Profile  
Adams Street  
Buck Homes Estates #1  
Sept. 1955 J.F. Davidson C.E.  
Scale: Horiz. 1"=40'  
Vert. 1"=4'

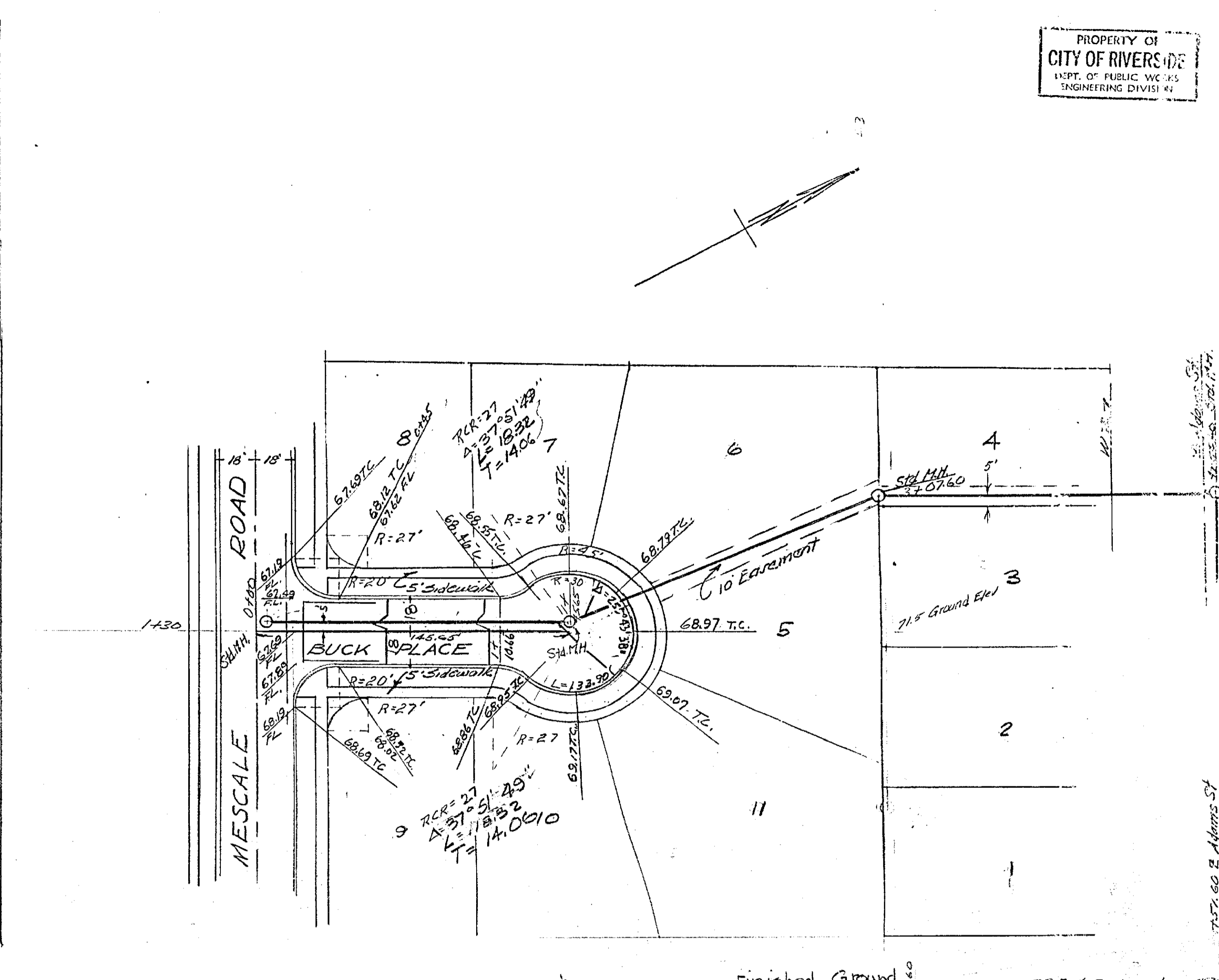
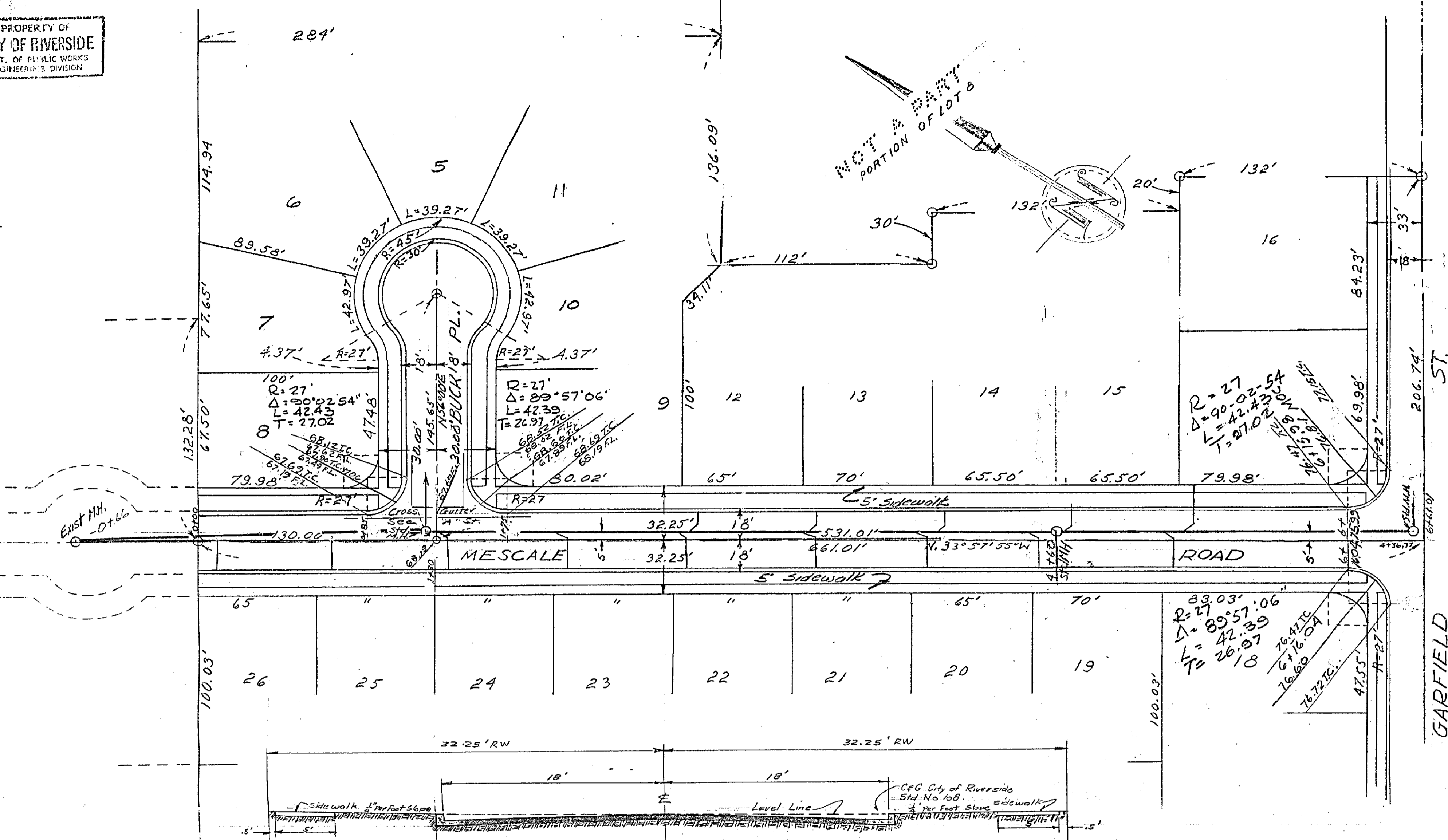
Revised & Submitted 10-10-55  
" " " " 10-13-55

1553 Sheet 1 of 3

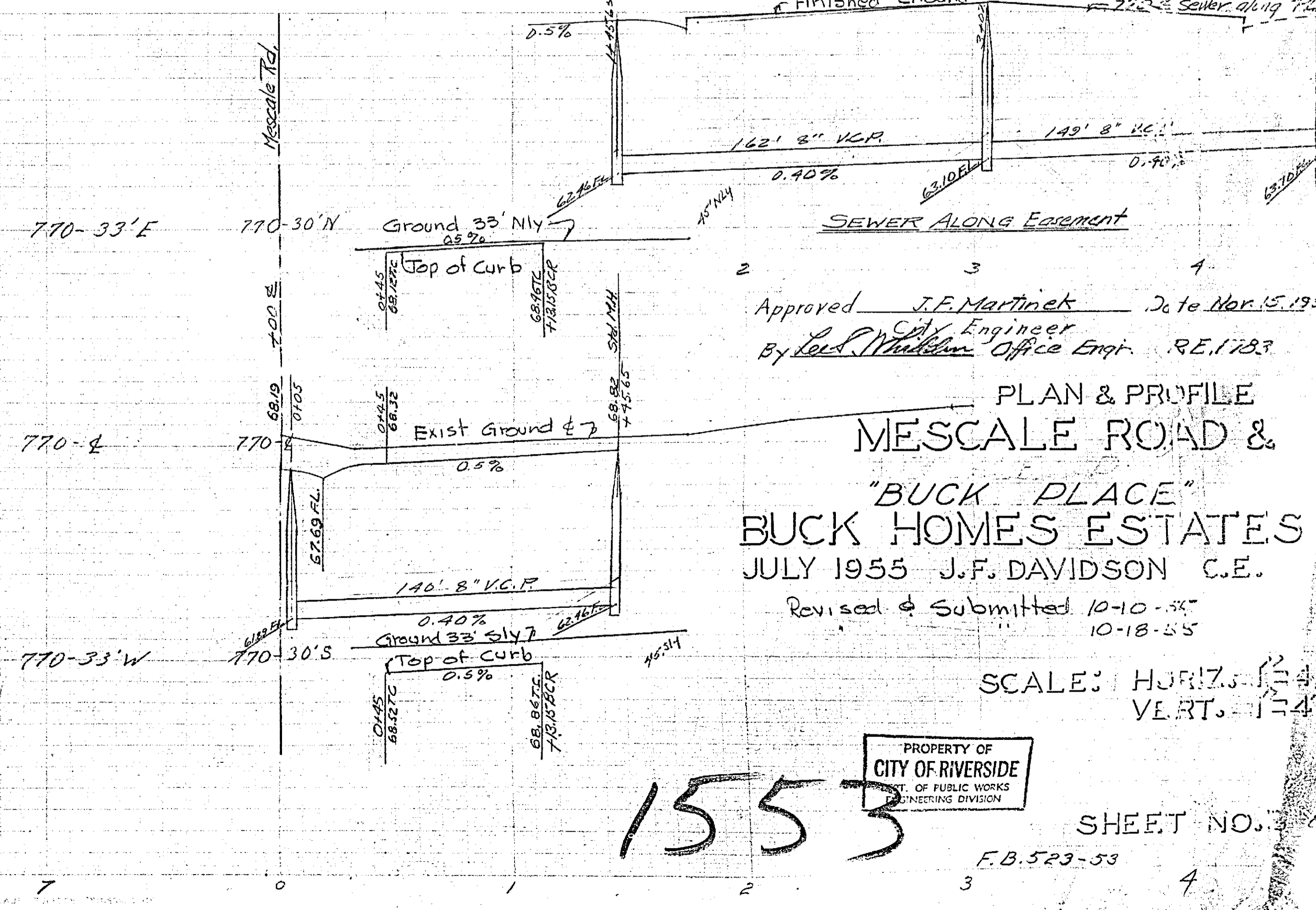
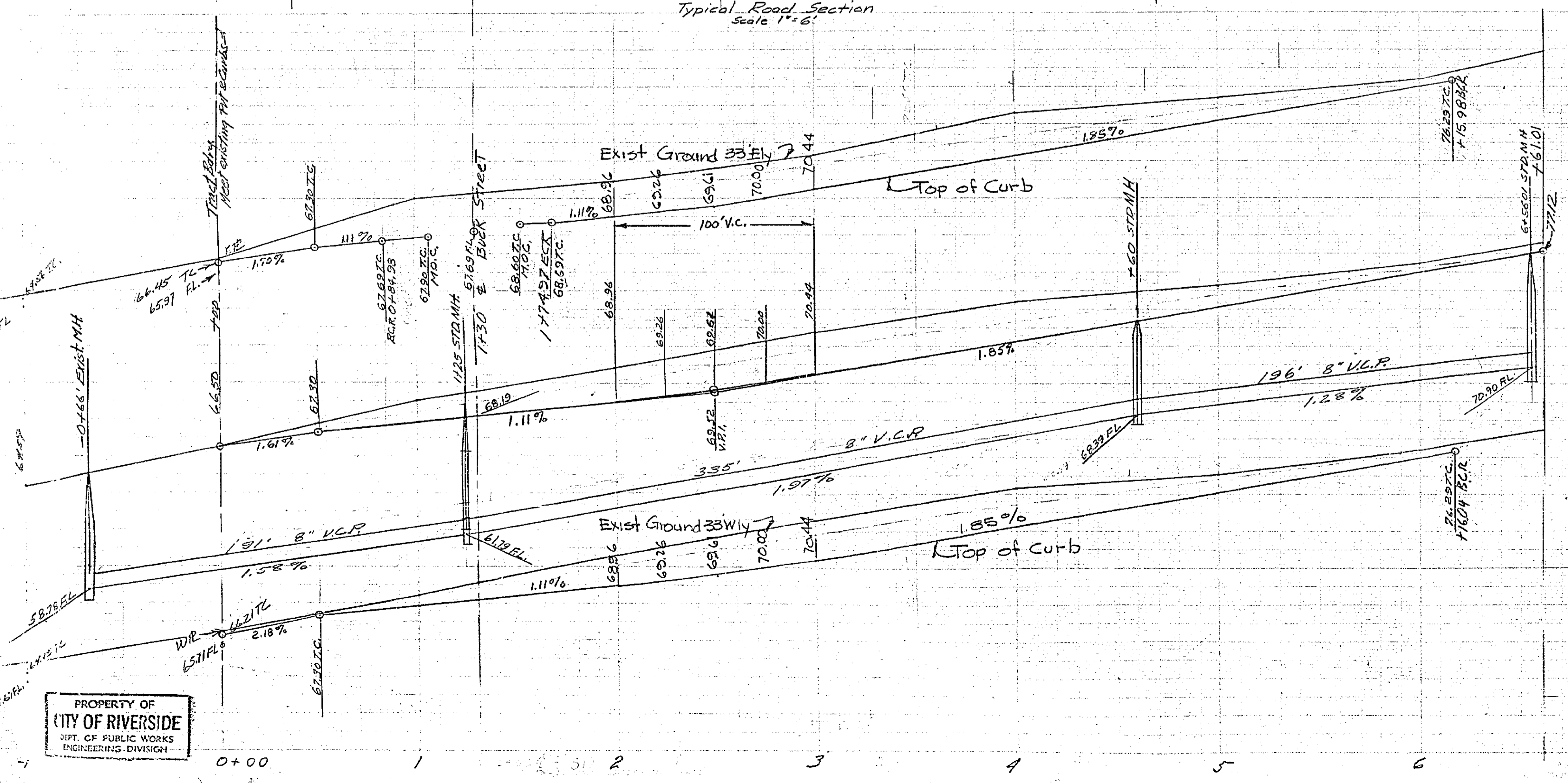








Typical Road Section  
Scale 1"=6'



Approved J.F. Martinet Date Nov. 15, 1955  
City Engineer  
By Ed. J. Wadsworth Office Engr. RE.1783

PLAN & PROFILE  
MESCALE ROAD &  
"BUCK PLACE"  
BUCK HOMES ESTATES  
JULY 1955 J.F. DAVIDSON C.E.  
Revised & Submitted 10-10-55  
10-18-55

SCALE: HORIZ. 1"=40'  
VERT. 1"=4'