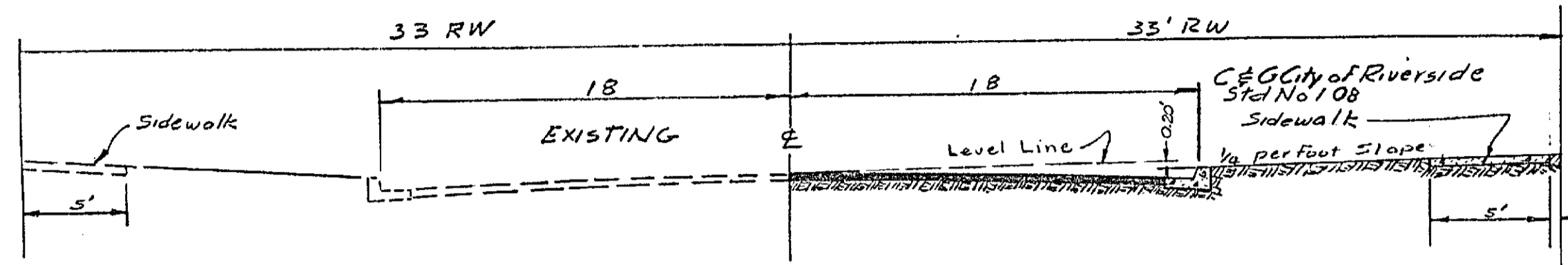


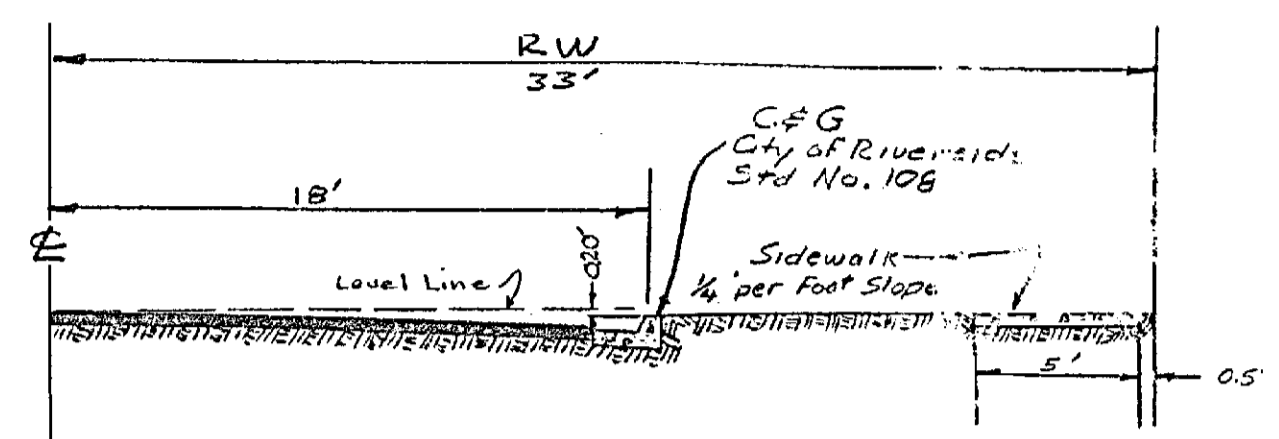
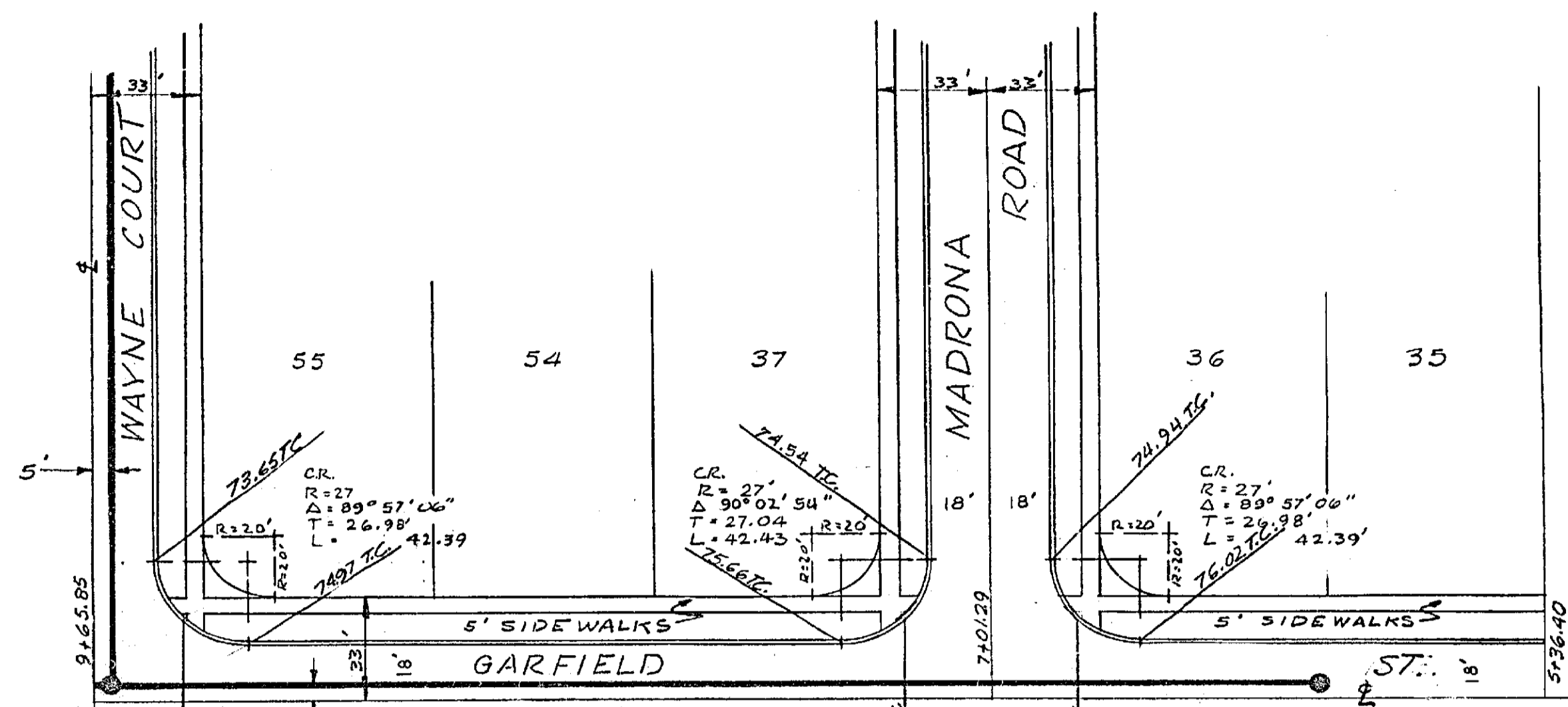
Approved J.F. Marinick Date Nov. 15, 1955
City Engineer
By Lee S. Waddell Office Engr. R.E. 1793
Revised & Submitted 10-10-55
10-18-55

PLAN & PROFILE
MADRONA ROAD
UNIT NO. 2
BUCK HOMES ESTATES
JULY 1955 J.F. DAVIDSON C.E.
SCALE: VERT. 1"=4'
HORIZ. 1"=40'

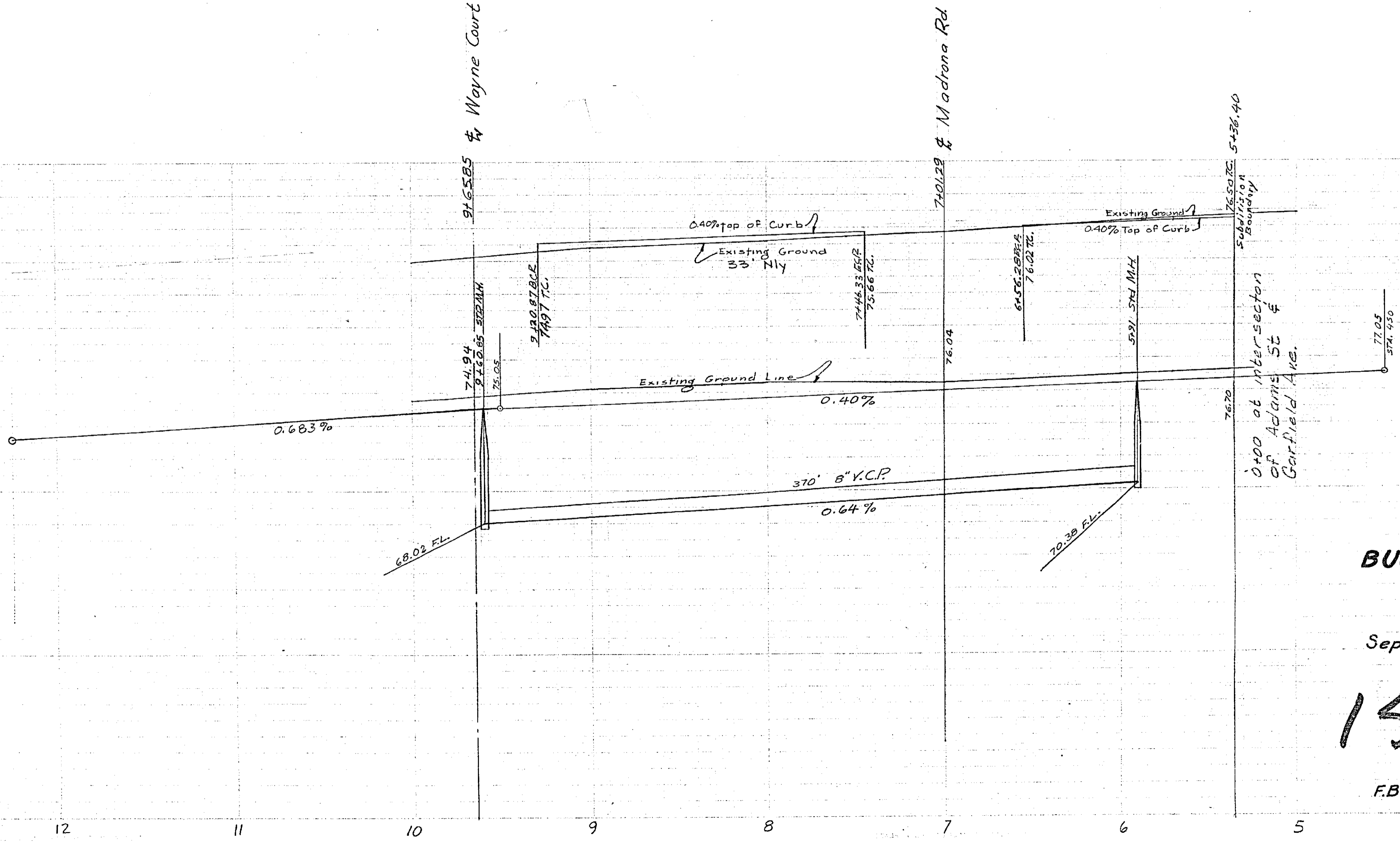
1553A
Sheet 2 of 3
SHEET NO. 40
F.B. 523-53



Sta 5+99.56 TO 13+69.89
TYPICAL ROAD SECTION
Scale 1" = 6'-0"
GARFIELD ST. Extending thru
BUCK HOMES ESTATES No 3



Sta 2+30.00 TO 8+99.56
TYPICAL ROAD SECTION
GARFIELD ST.
Scale: 1" = 6'
(0+00 @ Inters. of)



Approved J.F. Martinek Nov. 15, 1955
City Engineer
By Paul S. Wadman Office Engr. RE-17

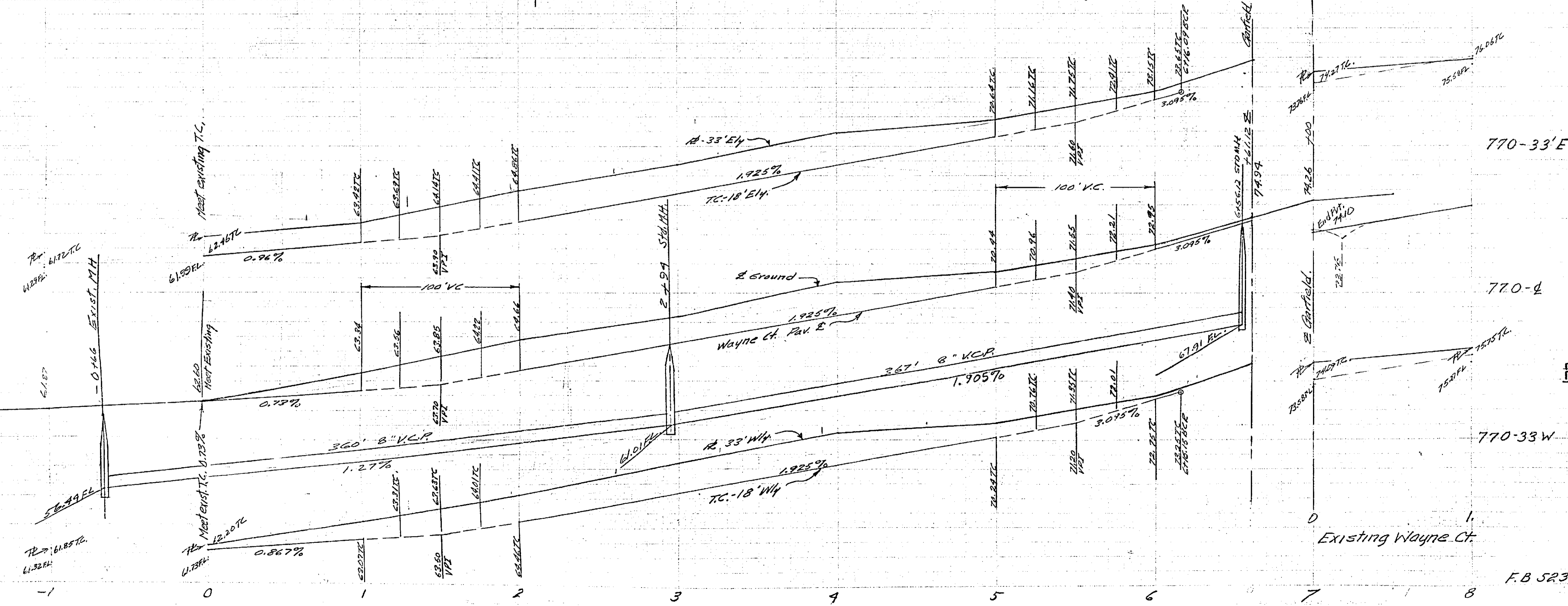
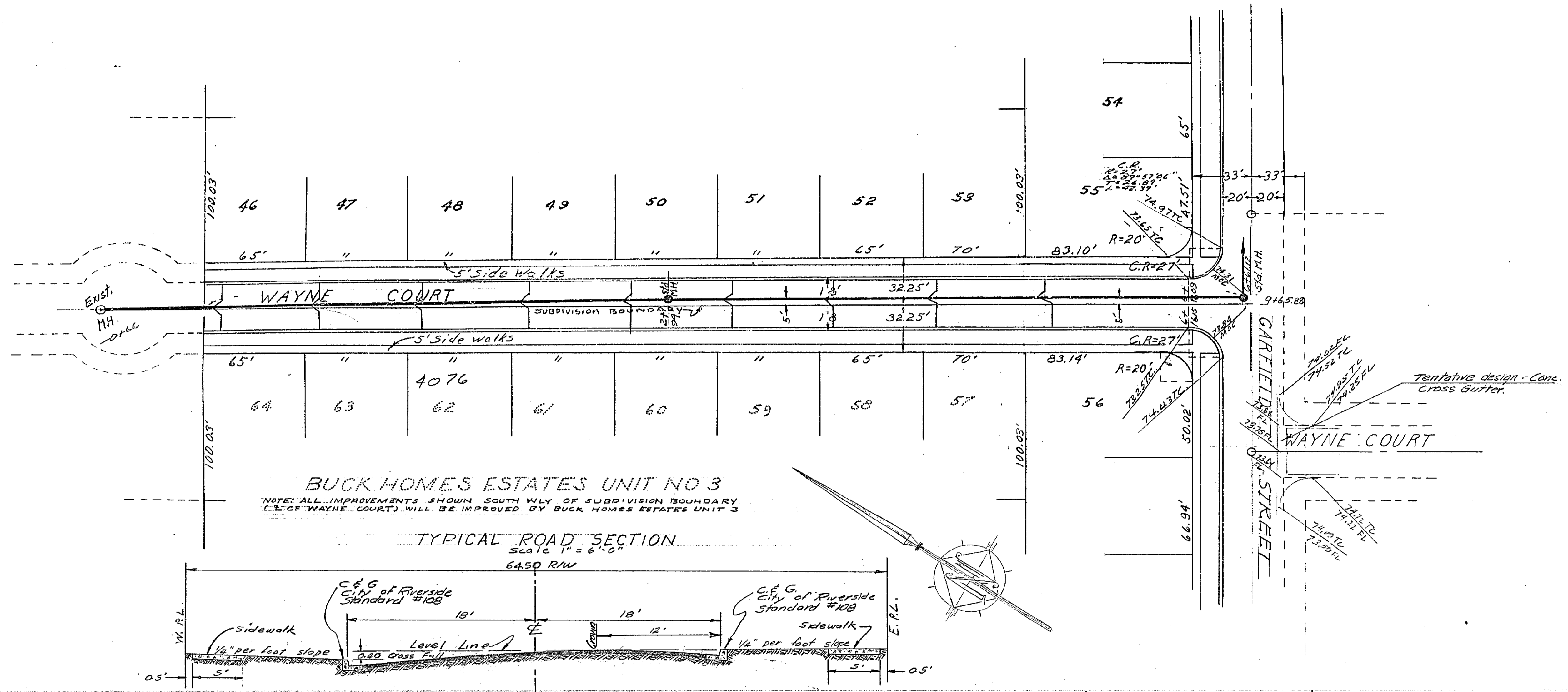
Revised & Submitted 10-10-56
10-12-56

PLAN & PROFILE
Proposed Extension of
GARFIELD AVE
BUCK HOMES ESTATES
Unit No 2

September 1955 Scale: Horiz. 1" = 40'
Vert. 1" = 4'

1553A

F.B. 523-53 Sheet # 1 of 3 Sheets



Approved J.F. Martinek Date 10/15/51
City Engineer
By Lu S. Whidden Office Engr. P.C. 1183
Revision Approved Lu S. Whidden Date 1/23/51
for the Director of Public Works
REVISED & submitted 1/23/51

PLAN & PROFILE
WAYNE COURT
UNIT NO 2
BUCK HOMES ESTATES
JULY 1955 J F DAVIDSON C E
SCALE HORIZ 1 40
VERT 1 4

1553A

Sheet 3 of 3
SHEET NO 4

F.B 523-53