

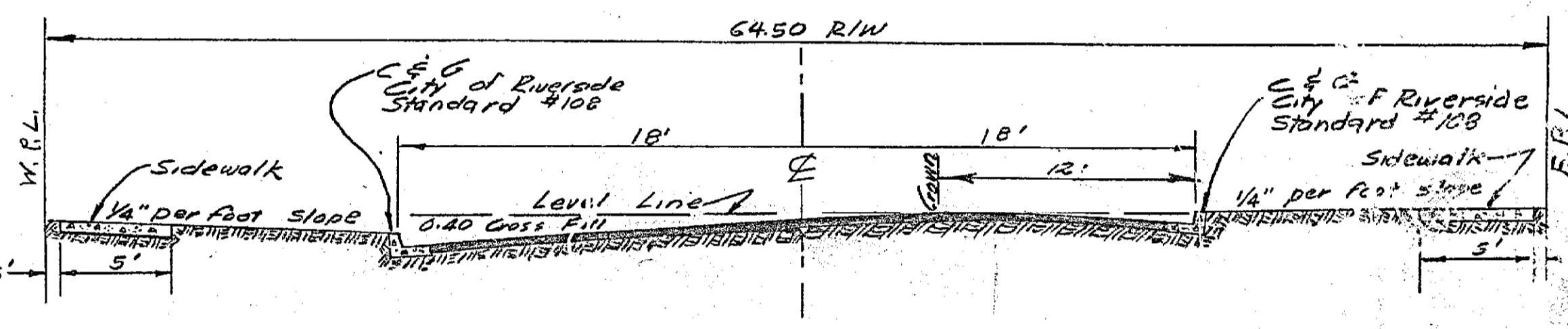
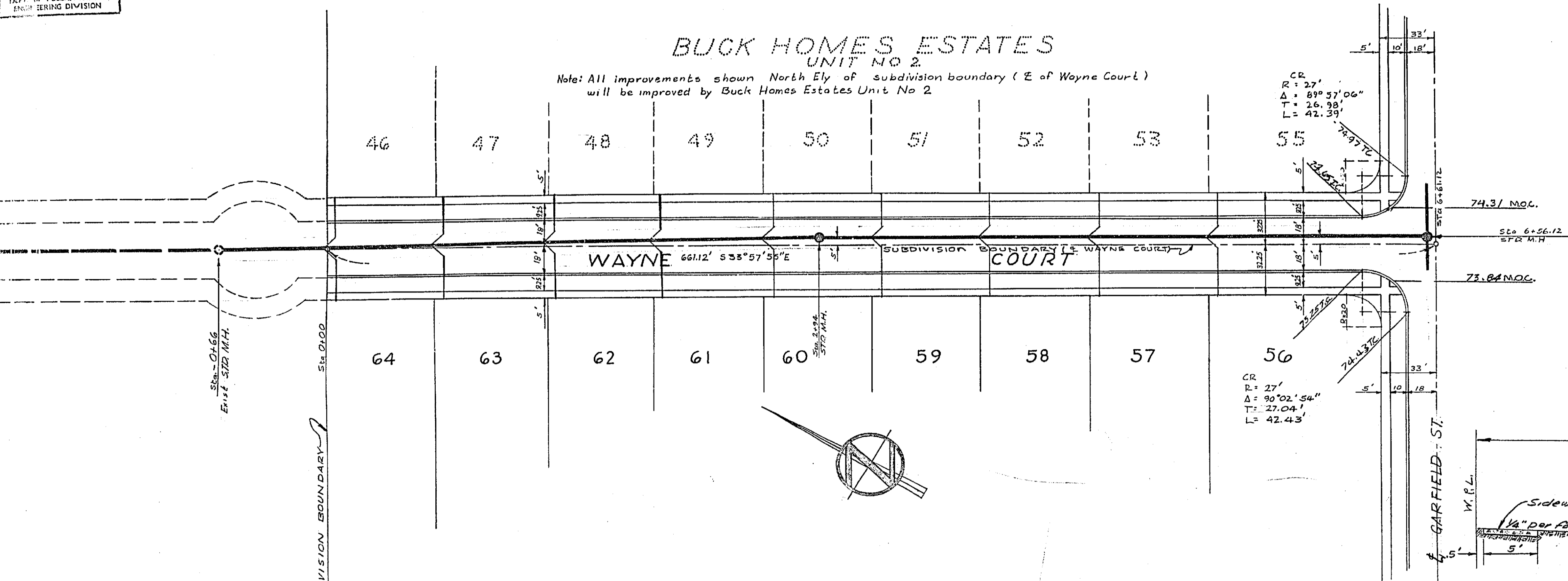
Approved J.F. Martinek Date Nov. 15
City Engineer
By Les S. Whidden Office Engr. R.E.

PLAN & PROFILE
MEMORY LANE HEIDI RD.
BUCK HOMES ESTATES
JULY 1955 J.F. DAVIDSON C.E.
SCALE: HORIZ. 1"=40'
VERT. 1"=4'

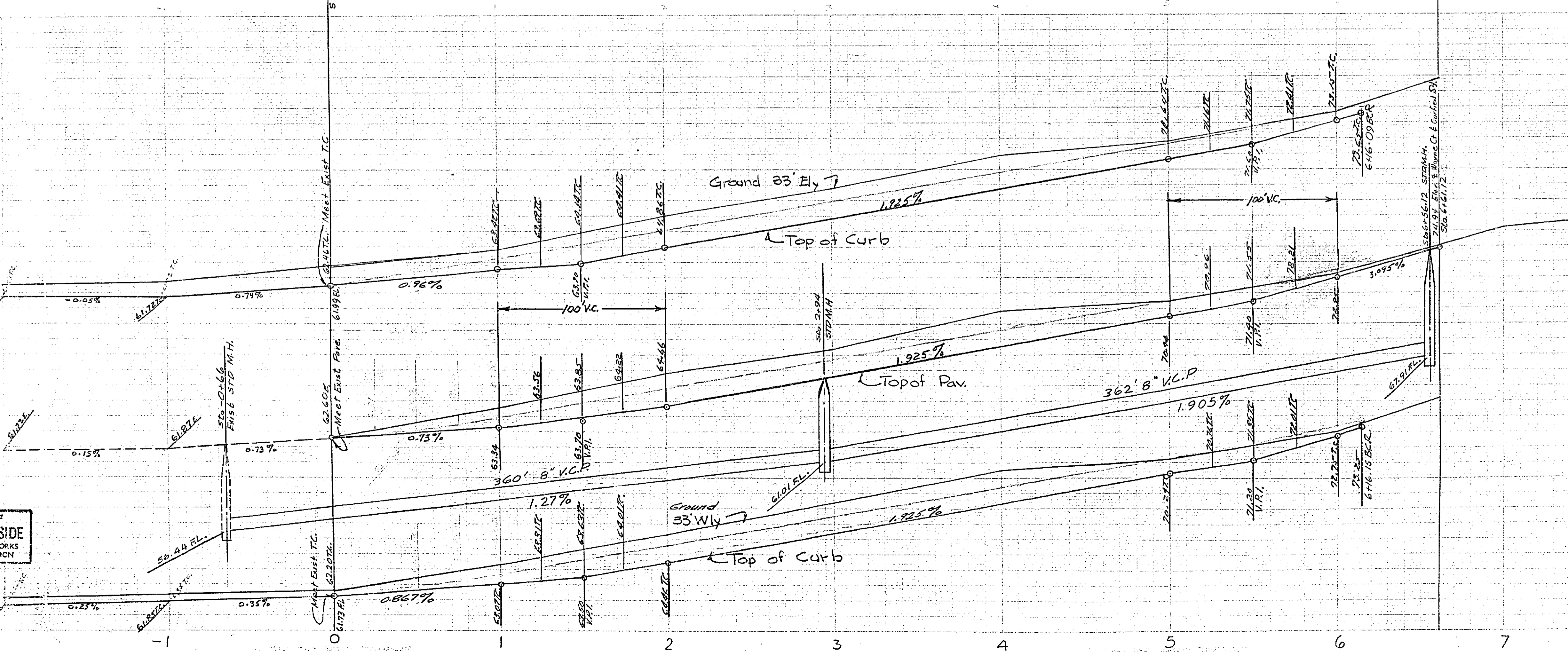
UNIT 3
Reimb. Contr. # 13
1553 B
FB. 523-53 SHEET NO. 3

BUCK HOMES ESTATES UNIT NO. 2

Note: All improvements shown North Ely of subdivision boundary (E of Wayne Court) will be improved by Buck Homes Estates Unit No. 2



TYPICAL ROAD SECTION
Scale: 1" = 6'-0"

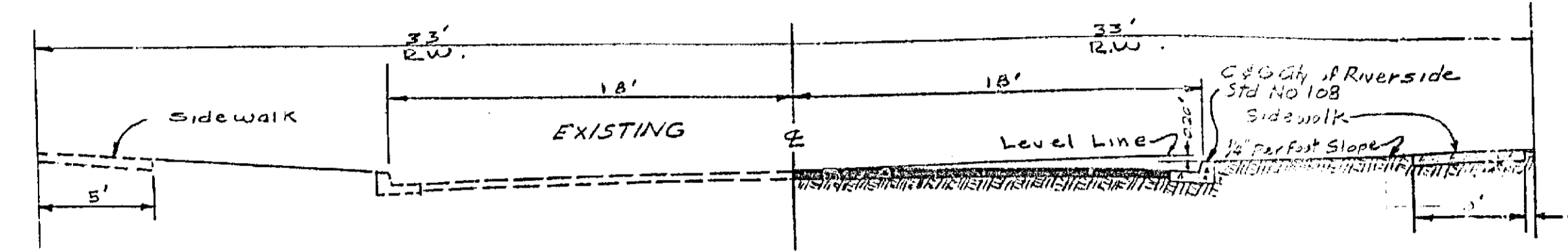
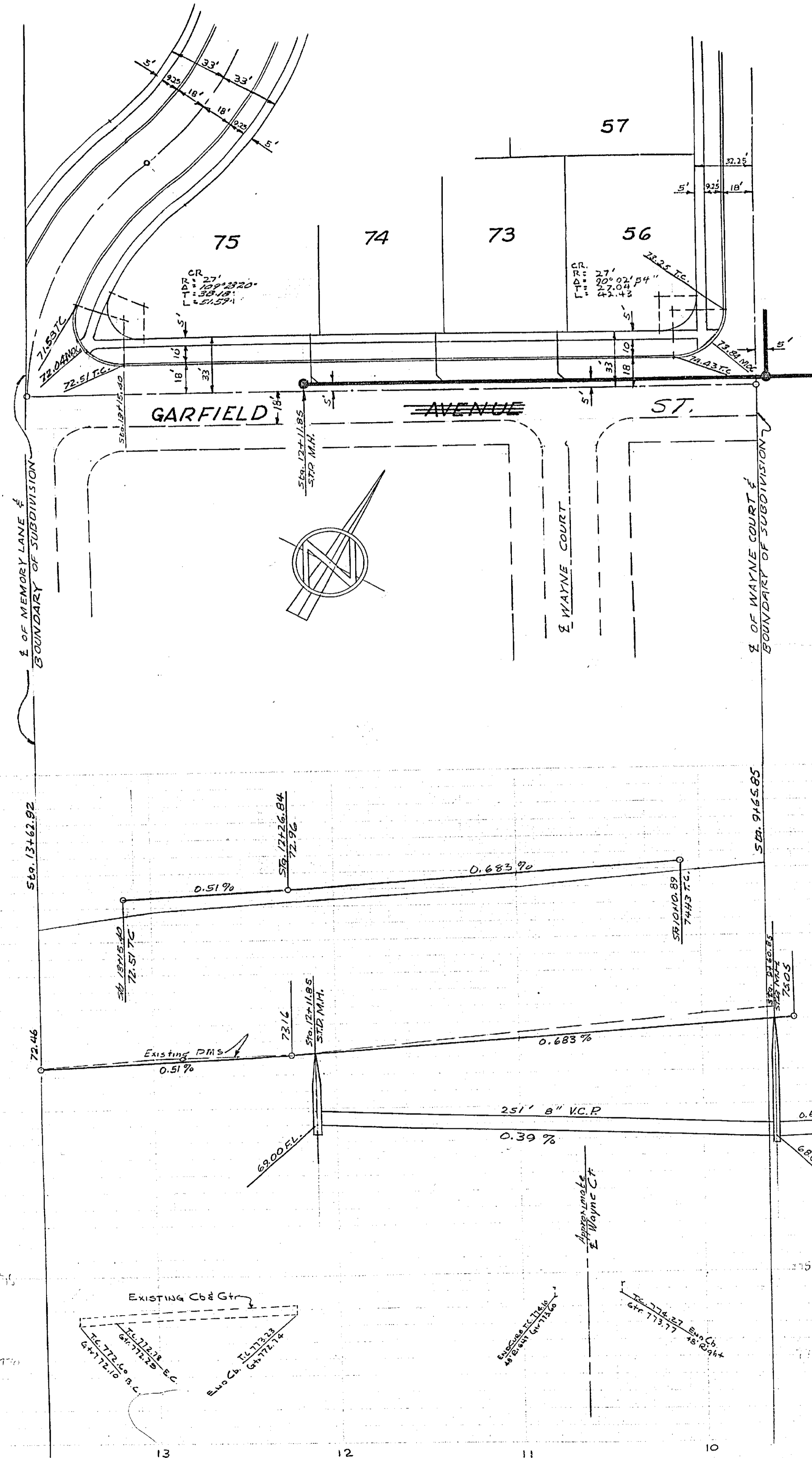


Approved J.F. Martinek Date Nov. 15, 1955
City Engineer
By Sen. R. W. ... Office Engr. R.E. 1753
Revised & Submitted 10-10-55

PLAN & PROFILE WAYNE COURT BUCK HOMES ESTATES UNIT NO. 3

Sept 1955 JF DAVIDSON CE
Scale Horz 1" = 40'
Vert 1" = 4'

1553B



STA 8+99.56 TO 13+62.89
TYPICAL ROAD SECTION
Scale 1"=6'-0"

Approved J.F. Martinek Date Nov. 15, 1955
City Engineer
By Lee R. Whittier Office Engr. R.E. 1783

PLAN & PROFILE
of
GARFIELD AVE.

BUCK HOMES ESTATES
Unit No 3
Sept. 1955 J.F. DAVIDSON
Scale: Horz 1"=40'
Vert 1"=4'

1553B