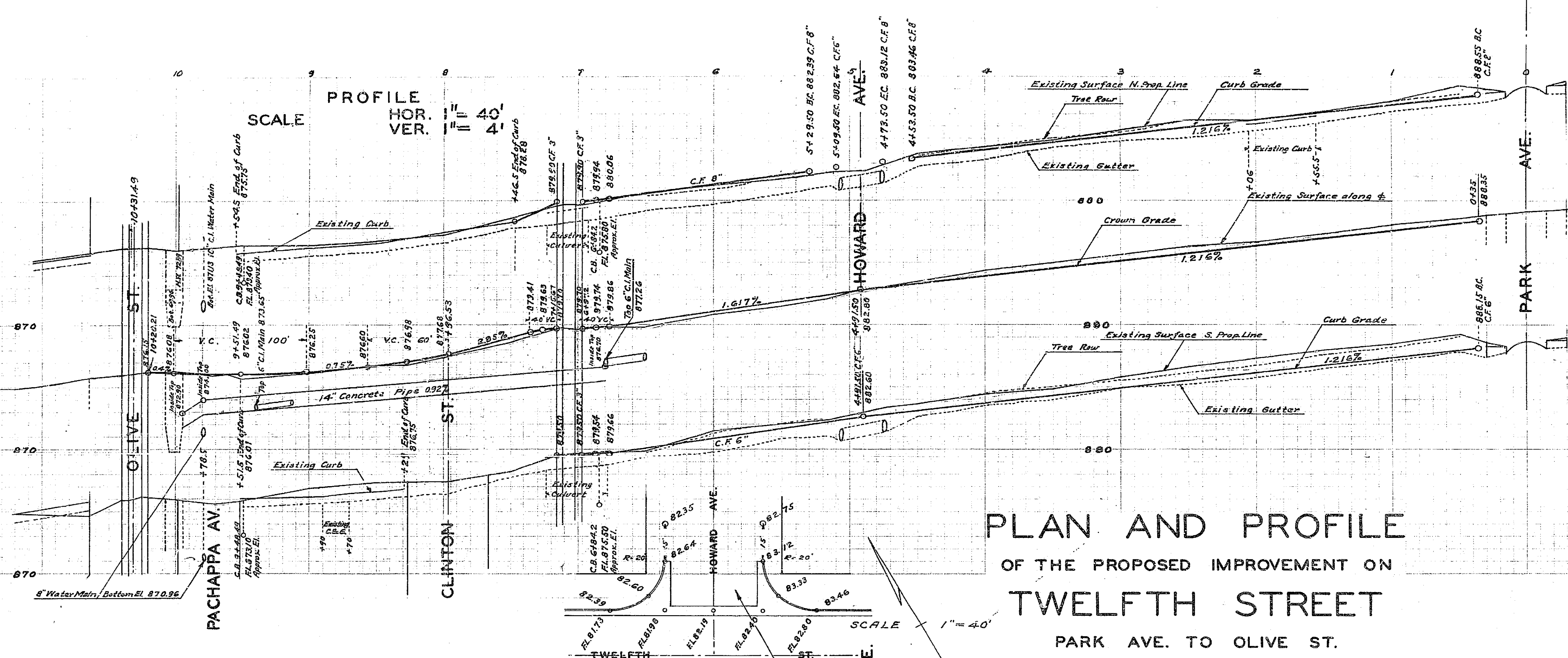
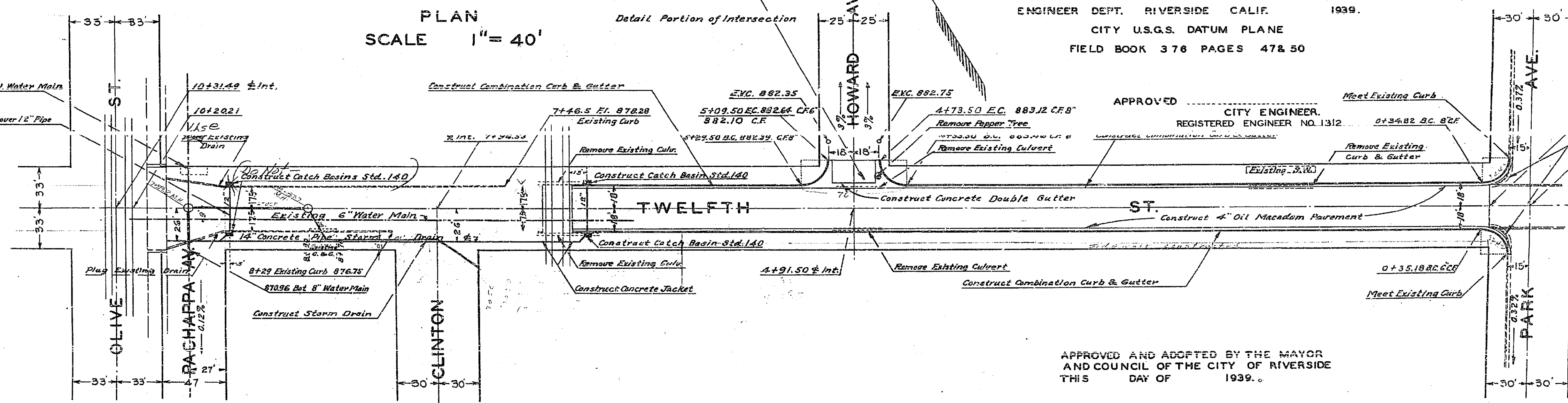


TWELFTH STREET PARK AVE. TO OLIVE ST.			
Drawing Number	158-A	Sheets	1
Field Book			376
Drawn	W.E.M.	Checked	
Approved			



PLAN AND PROFILE
OF THE PROPOSED IMPROVEMENT ON
TWELFTH STREET
PARK AVE. TO OLIVE ST.

ENGINEER DEPT. RIVERSIDE CALIF. 1939.
CITY U.S.G.S. DATUM PLANE
FIELD BOOK 376 PAGES 47 & 50



APPROVED AND ADOPTED BY THE MAYOR
AND COUNCIL OF THE CITY OF RIVERSIDE
THIS DAY OF 1939.

CITY CLERK, CITY OF RIVERSIDE.

158-A