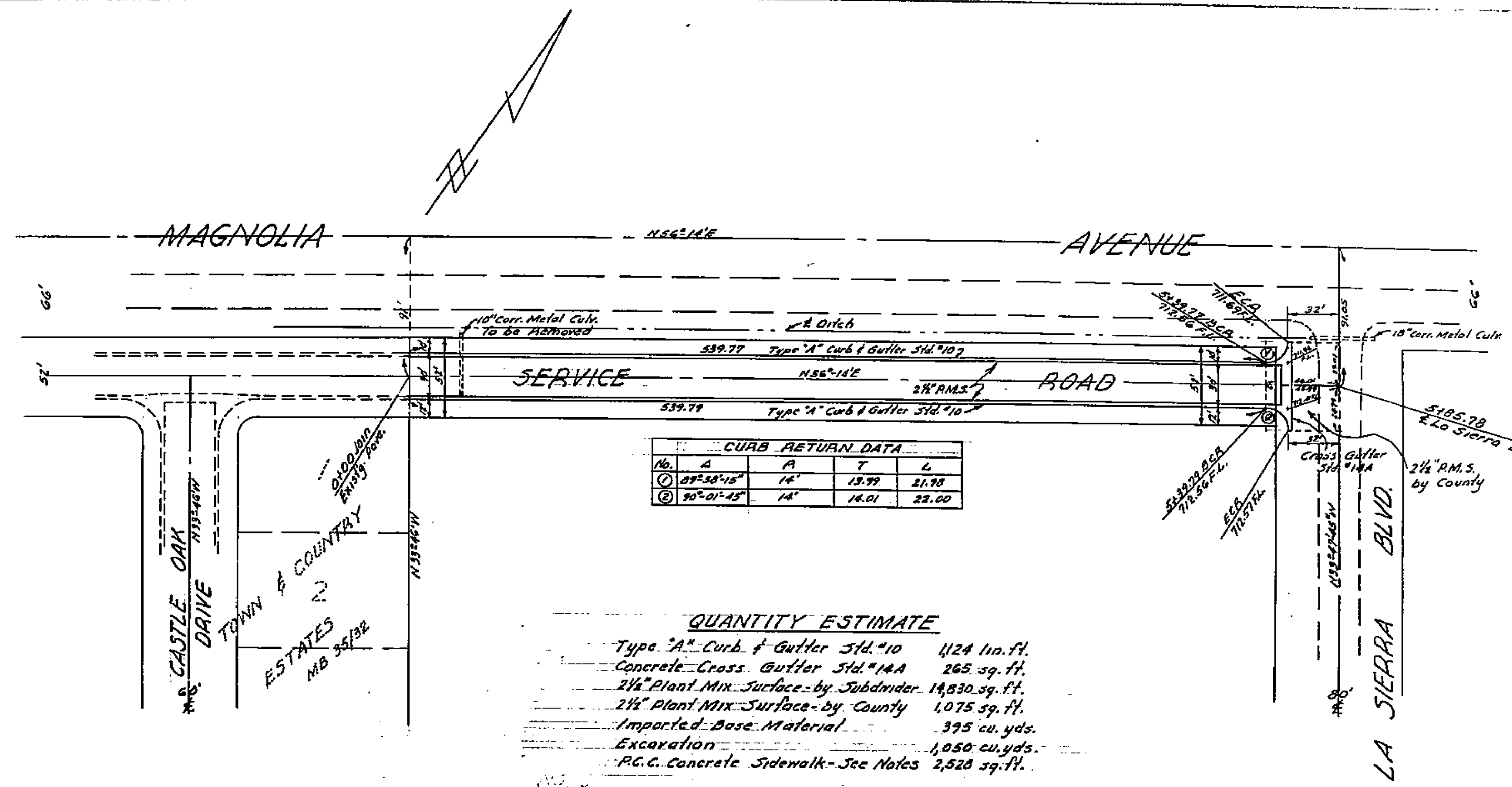
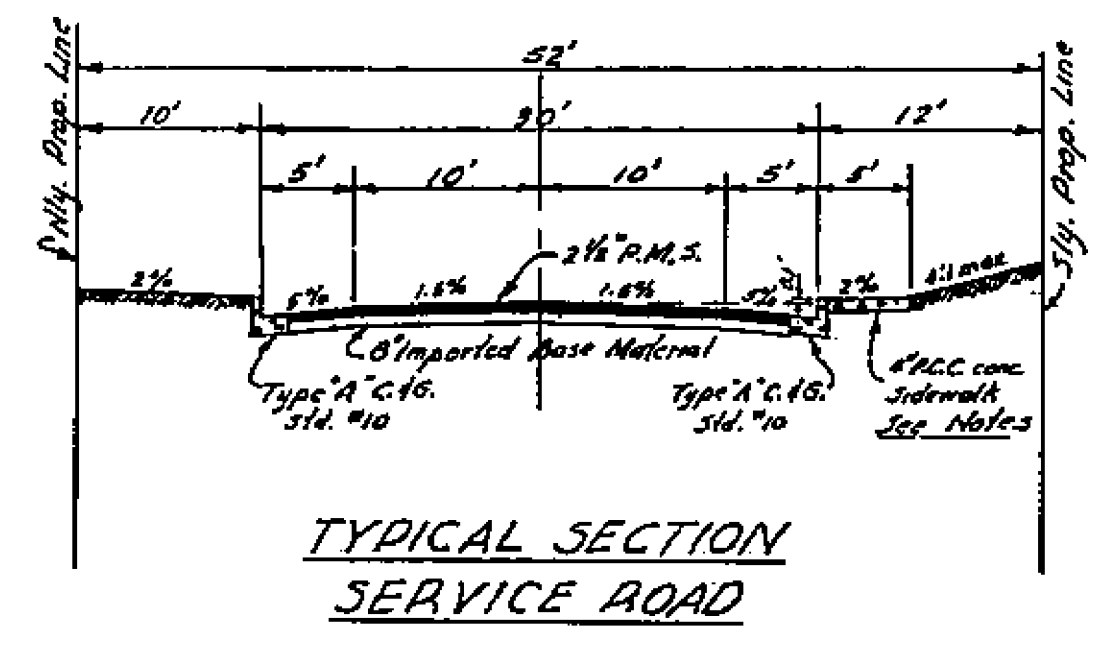


**NOTES**  
 Sidewalks are not to be constructed unless specified by financing agent.  
 On La Sierra Blvd., Subdivider will install Base Material and concrete curb & gutter as required and County will install 2 1/2" Plant Mix Paving to meet existing pavement.

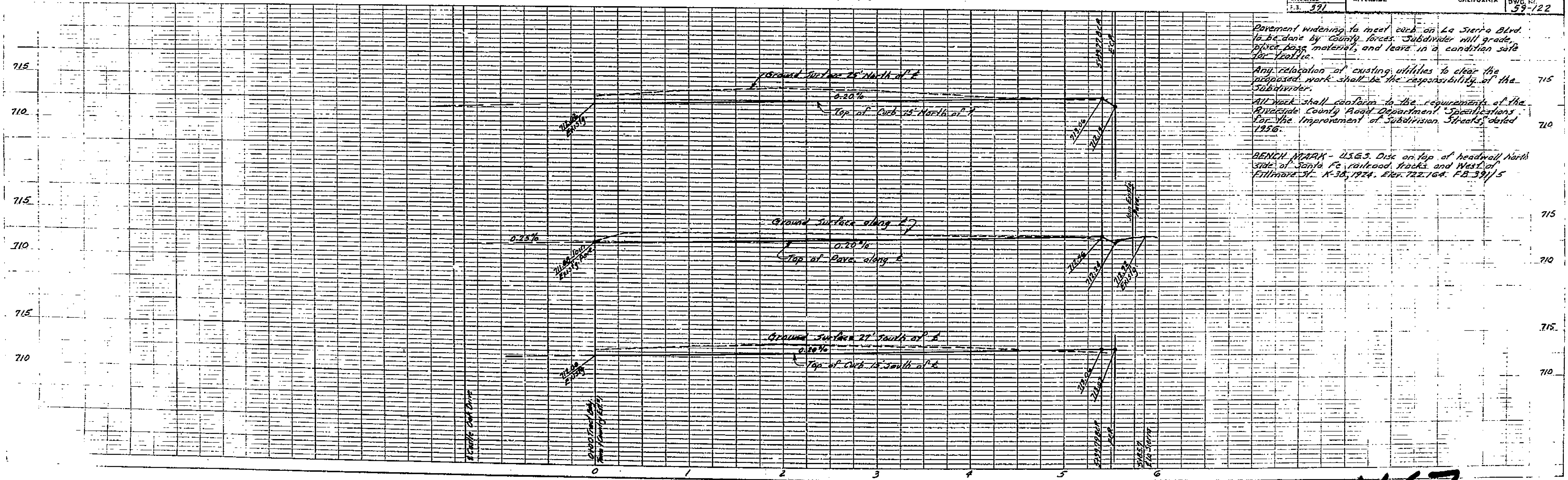


Approved June 1, 1959  
 A. C. KEITH  
 Riverside County Road Commissioner  
 By *[Signature]* Deputy

REVISIONS	DATE	BY
PORTION OF LOT 1 BLOCK 43 OF THE A.L. & CO. M.B. 1170, S.B. CO.		
STREET PLAN & PROFILE		
SERVICE ROAD		
FROM EAST BOUNDARY OF TOWN & COUNTRY UNIT NO. 1 TO LA SIERRA BOULEVARD		
SCALE 1"=50'	DATE 5-28-59	W.O. 59-122
DRAWN REC	CHECKED	SHEET
ALBERT A. WEBB ASSOCIATES CIVIL ENGINEERS		OF 1 SHEETS
RIVERSIDE CALIFORNIA		DWG. NO. 59-122



**QUANTITY ESTIMATE**  
 Type "A" Curb & Gutter Std. #10 4124 lin. ft.  
 Concrete Cross Gutter Std. #10A 265 sq. ft.  
 2 1/2" Plant Mix Surface-by Subdivider 14,830 sq. ft.  
 2 1/2" Plant Mix Surface-by County 1,075 sq. ft.  
 Imported Base Material 395 cu. yds.  
 Excavation 1,050 cu. yds.  
 P.C.C. Concrete Sidewalk-See Notes 2,520 sq. ft.



Pavement widening to meet curb on La Sierra Blvd. to be done by County forces. Subdivider will grade, place base material, and leave in a condition safe for traffic.  
 Any relocation of existing utilities to clear the proposed work shall be the responsibility of the Subdivider.  
 All work shall conform to the requirements of the Riverside County Road Department Specifications for the Improvement of Subdivision Streets, dated 1956.  
 BENCH MARK - U.S.G.S. Disc on top of headwall North side of Santa Fe railroad tracks and West of Fillmore St. K-38, 1924. Elev. 722.164. FB 391/5

1667