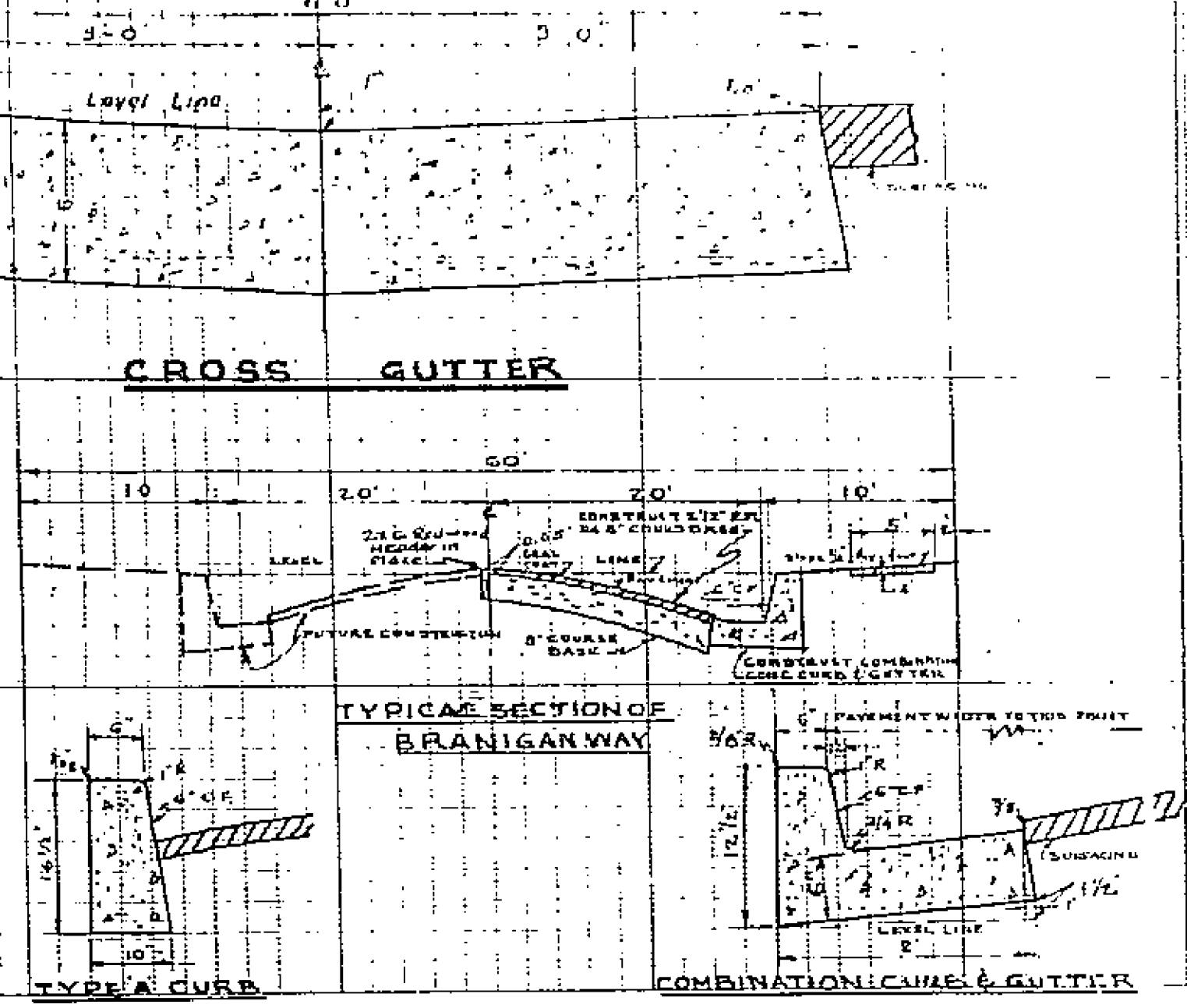
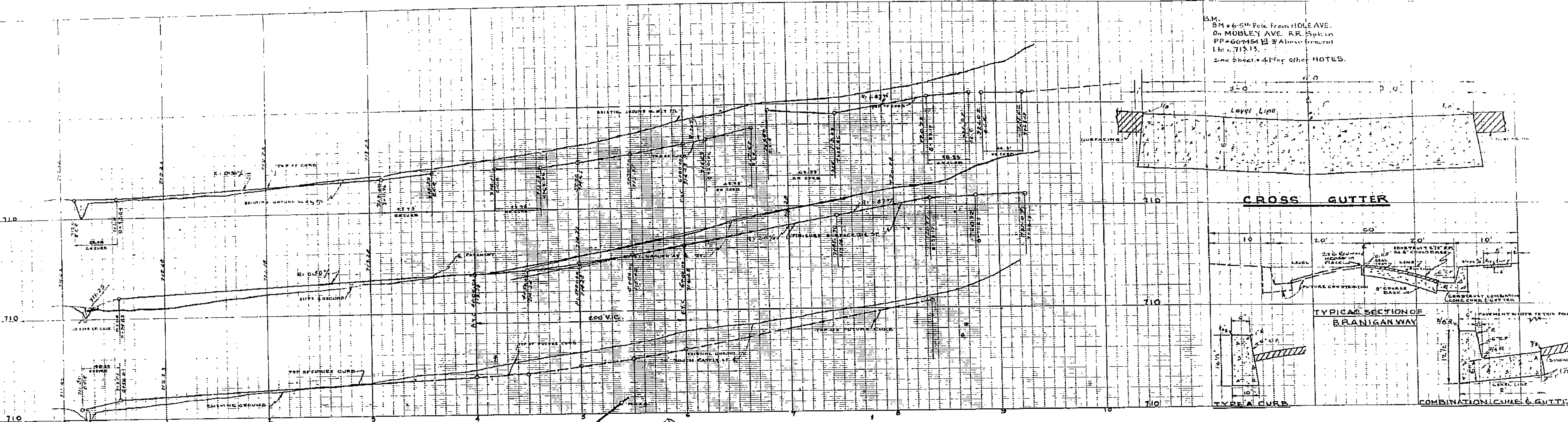
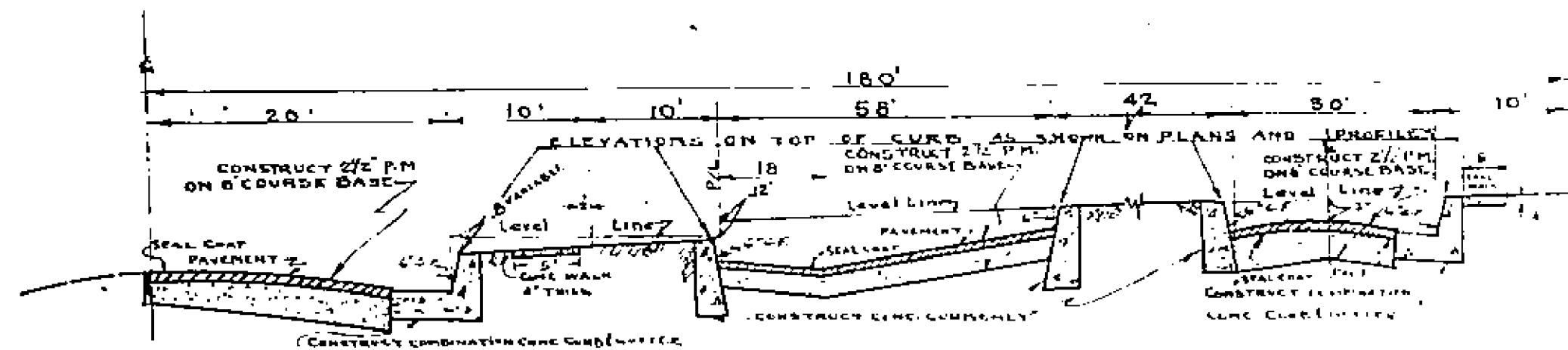
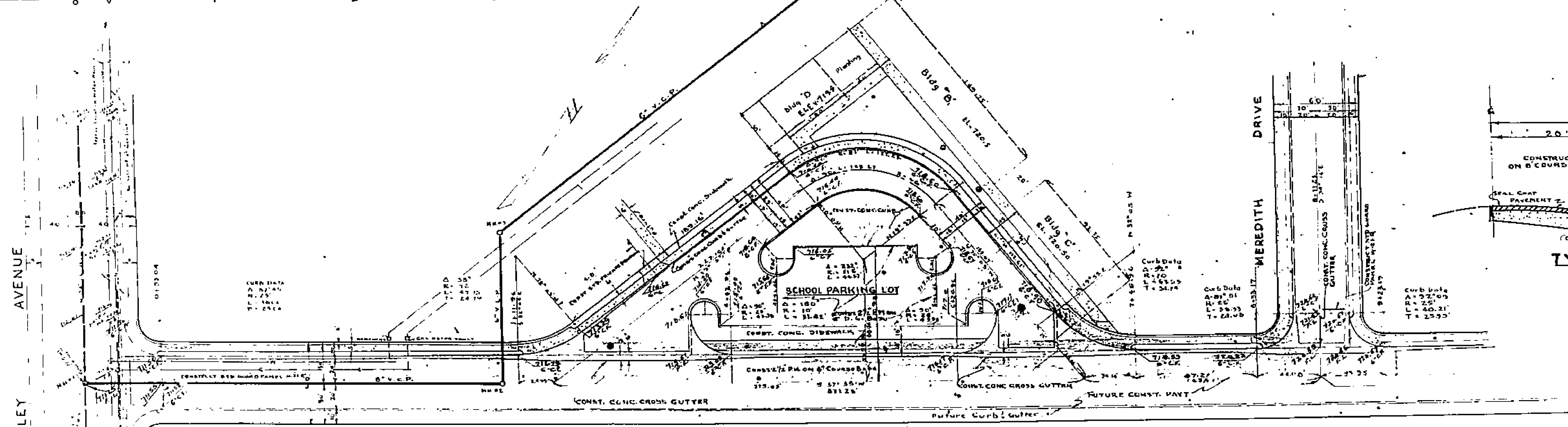


B.M. 6.54' Elev. from HOLE AVE.
 On MOBLEY AVE. RR. Spk. in
 PP-60754 III 2 Above ground
 Lic. 71313.
 See sheets 4 for other NOTES.



NOTE: WORK ON THESE PLANS ARE NOT
 FINAL UNLESS SIGNED BY RIVERSIDE COUNTY
 ROAD COMMISSIONER.
 WORK ON THIS STREET PLAN TO BE DONE ON ALLEYS.
 DATE 12/31/1961 EXPIRES 01/01/62 6/27/62
 SHOW PORTION ONLY.



TYPICAL SECTION OF BRANIGAN WAY & PARKING AREA
 FROM STATION 3+1.26 TO 7+42.26

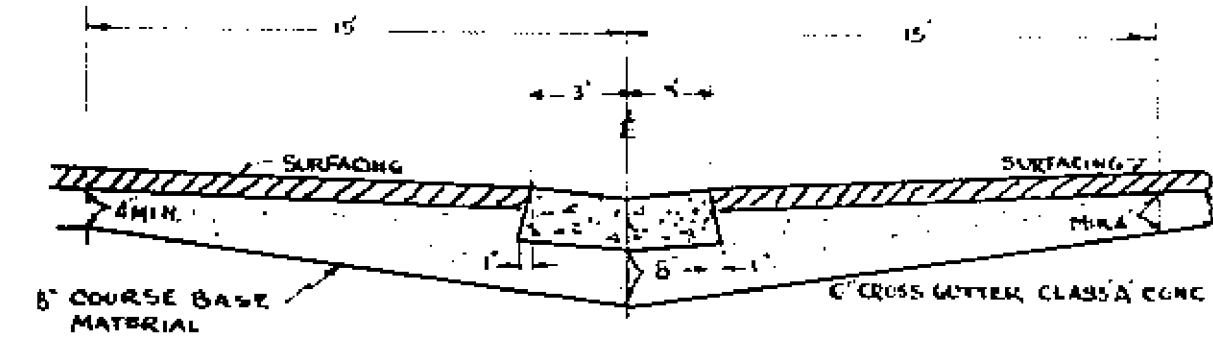
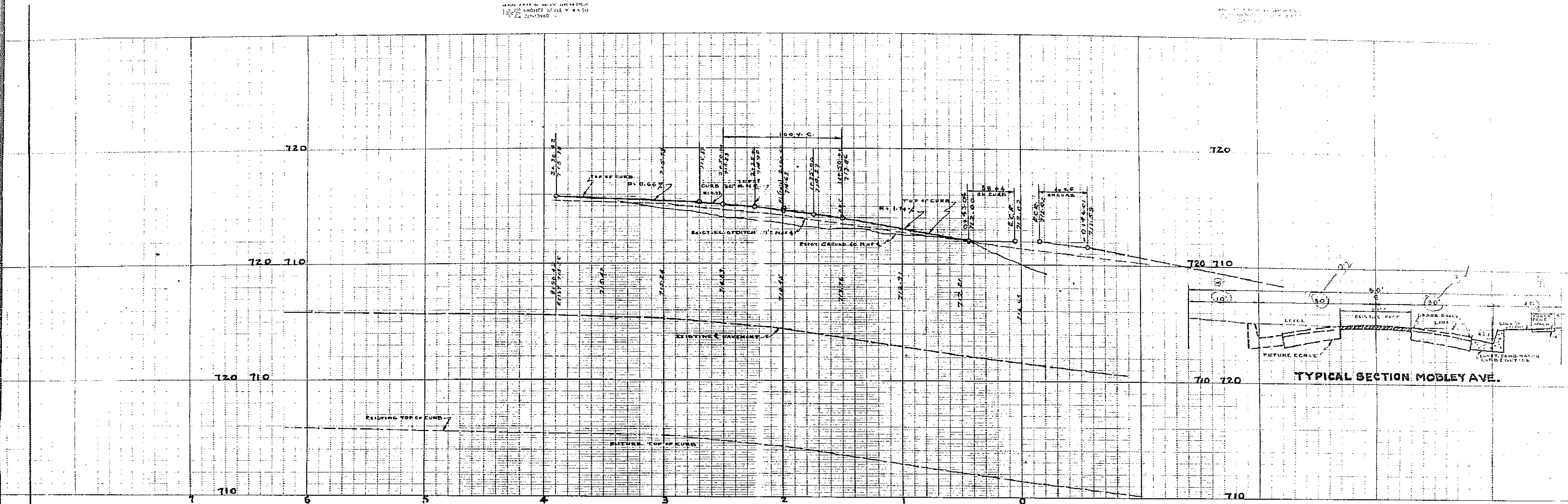
BRANIGAN WAY

1683

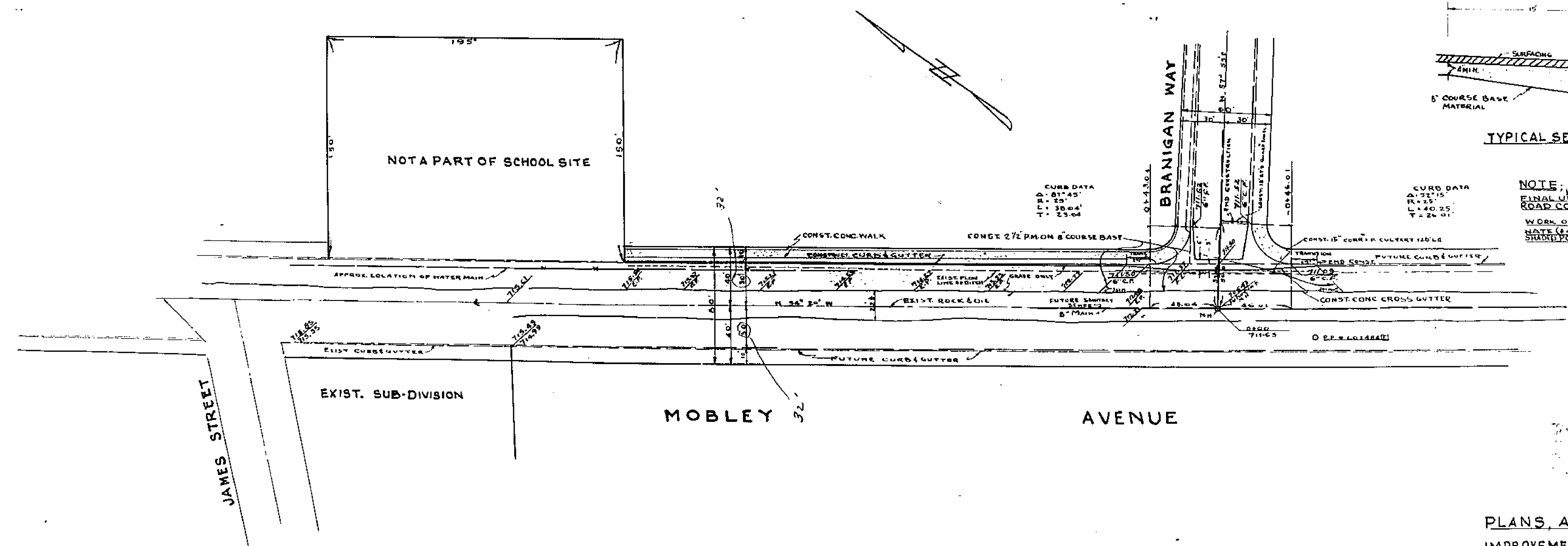
Handwritten signature
 PLANS, ALIGNMENT & PROFILE FOR STREET
 IMPROVEMENTS ON BRANIGAN WAY
 FOR ALVORD SCHOOL DISTRICT, ARBONVILLE, CALIFORNIA
 ENGINEER: *Handwritten name*
 R.C. 9360
 APPROVED:
 COUNTY ROAD COMMISSIONER RIVERSIDE COUNTY, CALIFORNIA

JOB NO.
 DATE
 DRAWN
 M.C.
 SHEET 4

SCALE: 1" = 40' (HORIZONTAL)
 1" = 4' (VERTICAL)



TYPICAL SECTION THROUGH 6" CROSS GUTTER



NOTE: WORK ON THESE PLANS ARE NOT FINAL UNLESS SIGNED BY RIVERSIDE COUNTY ROAD COMMISSIONER.
 WORK ON THIS SHEET PLAN TO BE DONE ON ALTERNATE DATE (DATE FOUR FROM STATION 0+14.20, 0+15.00, 0+16.00, 0+17.00)

1683

PLANS, ALIGNMENT & PROFILE FOR STREET IMPROVEMENTS ON MOBLEY AVENUE FOR ALVORD SCHOOL DISTRICT, ARLINGTON, CALIFORNIA
 ENGINEER: *[Signature]*
 R.E. 6380
 APPROVED: _____
 COUNTY ROAD COMMISSIONER RIVERSIDE COUNTY, CALIFORNIA

JOB No	5608
DATE	5-14-54
DRAWN BY	M.C.S.
SHEET #	42